



## DIVISION OF FAMILY RESOURCES

# Monthly Management Report April 2017

### State of Indiana

Eric Holcomb  
Governor

### Family and Social Services Administration

Jennifer Walthall, M.D.  
Secretary

### Division of Family Resources

Adrienne Shields  
Director

For questions regarding data on this report contact:  
[office.Communications@fssa.IN.gov](mailto:office.Communications@fssa.IN.gov)



## State of Indiana

Published May 2017



## DIVISION OF FAMILY RESOURCES

### Monthly Management Report

Reporting Month: April 2017

Location: Statewide

#### TEMPORARY ASSISTANCE FOR NEEDY FAMILIES (TANF)

Child-Only and One-Parent Families	Apr 30, 2017	March 2017	April 2016	Annual Change
Number of families receiving TANF Grants	6,753	7,087	7,490	-9.84%
Total number of grant recipients	13,821	14,663	15,505	-10.86%
Number of adult grant recipients	1,900	2,085	2,338	-18.73%
Number of child grant recipients	11,921	12,578	13,167	-9.46%
Total payments	\$1,278,417	\$1,361,640	\$1,415,093	-9.66%
Average payment per case	\$189.31	\$192.13	\$188.93	0.20%
Average payment per recipient	\$92.50	\$92.86	\$91.27	1.35%
Number of cases with benefits reduced to zero	123	121	198	-37.88%
Number of recipients with benefits reduced to zero	253	260	424	-40.33%
Number of adult recipients with benefit reduced to zero	49	51	96	-48.96%
Number of child recipients with benefit reduced to zero	204	209	328	-37.80%

Two-Parent Families	Apr 30, 2017	March 2017	April 2016	Annual Change
Number of families receiving TANF Grants	385	418	493	-21.91%
Total number of grant recipients	1,633	1,762	2,030	-19.56%
Number of adult grant recipients	600	656	786	-23.66%
Number of child grant recipients	1,033	1,106	1,244	-16.96%
Total payments	\$85,994	\$100,116	\$111,795	-23.08%
Average payment per case	\$223.36	\$239.51	\$226.76	-1.50%
Average payment per recipient	\$52.66	\$56.82	\$55.07	-4.38%
Number of cases with benefits reduced to zero	8	9	14	-42.86%
Number of recipients with benefits reduced to zero	25	28	51	-50.98%
Number of adult recipients with benefit reduced to zero	10	12	19	-47.37%
Number of child recipients with benefit reduced to zero	15	16	32	-53.12%

**Note:**

All data July 2014 and following will be broken out according to the new DFR region structure effective July 1 2014.

Source:



## DIVISION OF FAMILY RESOURCES

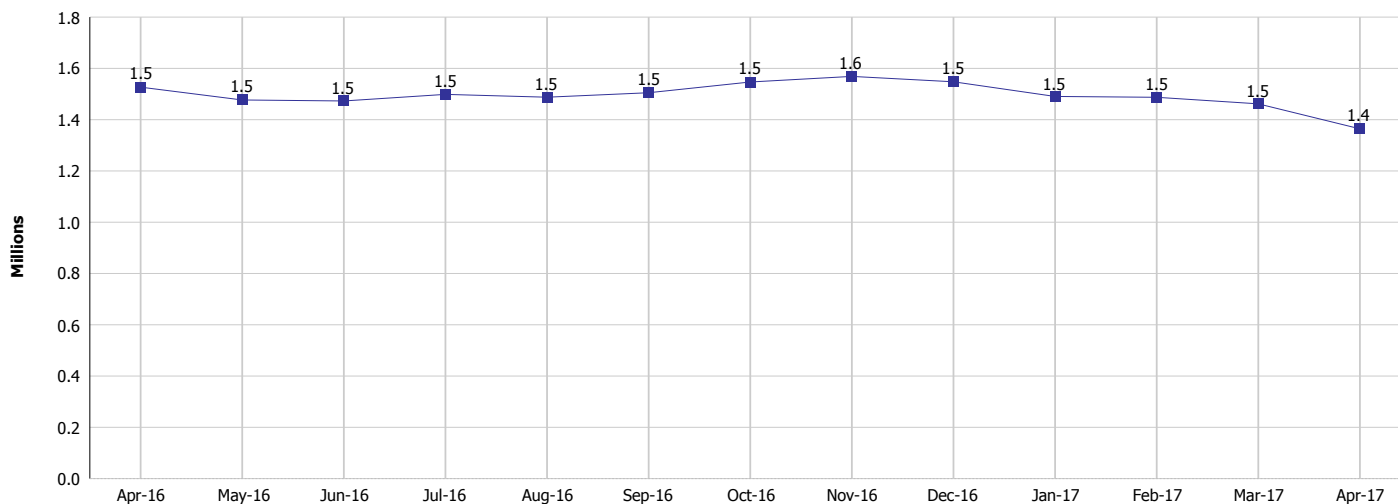
### Monthly Management Report

Reporting Month: April 2017

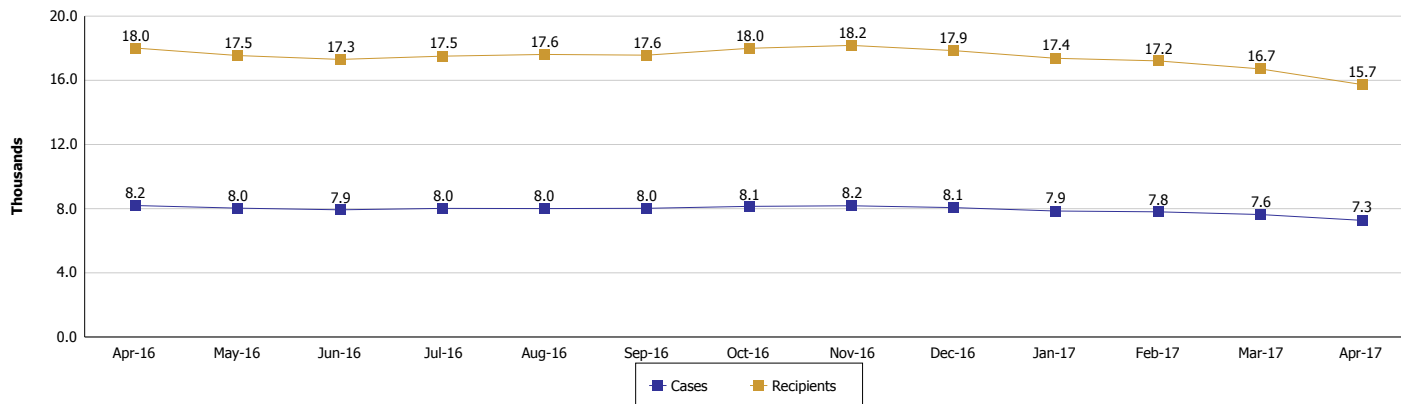
Location: Statewide

#### TEMPORARY ASSISTANCE FOR NEEDY FAMILIES (TANF)

**TANF Cash Assistance**  
(TANF Regular and TANF Two-Parent)



**TANF Cases and Recipients**  
(TANF Regular and TANF Two-Parent)



**Note:**

All data July 2014 and following will be broken out according to the new DFR region structure effective July 1 2014.



## DIVISION OF FAMILY RESOURCES

### Monthly Management Report

Reporting Month: April 2017

Location: Statewide

#### SUPPLEMENTAL NUTRITION ASSISTANCE PROGRAM (SNAP)

	April 2017	March 2017	April 2016	Annual Change
Total issuance	\$78,421,632	\$80,564,770	\$89,038,115	-11.92%
Number of households receiving SNAP benefits	293,370	300,159	325,841	-9.97%
Number of recipients	661,284	678,005	736,404	-10.20%
Average issuance per household	\$267.31	\$268.41	\$273.26	-2.17%
Average issuance per recipient	\$118.59	\$118.83	\$120.91	-1.92%

**Note:**

All data July 2014 and following will be broken out according to the new DFR region structure effective July 1 2014.

#### SNAP ERROR RATES

	December 2016	November 2016	October 2016	Cumulative FFY 2016
FFY Cumulative Positive Error Rate	8.79%	8.55%	7.81%	6.94%
Monthly Positive Error Rate	9.21%	9.29%	7.81%	NA
FFY Cumulative Negative Error Rate	32.26%	30.71%	25.40%	27.12%
Monthly Negative Error Rate	35.59%	35.94%	25.40%	NA

**Note:**

All data July 2014 and following will be broken out according to the new DFR region structure effective July 1 2014.

**Notes:**

Reporting periods for SNAP Error Rates reflect the review period and Federal submission deadline. The month reported above is the month in which an action was taken included in the review sample.

Positive actions are those which produced an issuance of benefits to a household. Negative actions are those which closed or denied benefits to a household.

Error Rate data is reported by the state before the federal agency has accepted and finalized the results. This rate is subject to revision based upon: completion and submission of outstanding reviews; final review corrections; and completion of previously dropped reviews. Monthly numbers are taken from end-of-month totals. The error status of cases may be changed by the State or Federal Review process, which would cause a change that might not be reflected in the previous monthly numbers.



# DIVISION OF FAMILY RESOURCES

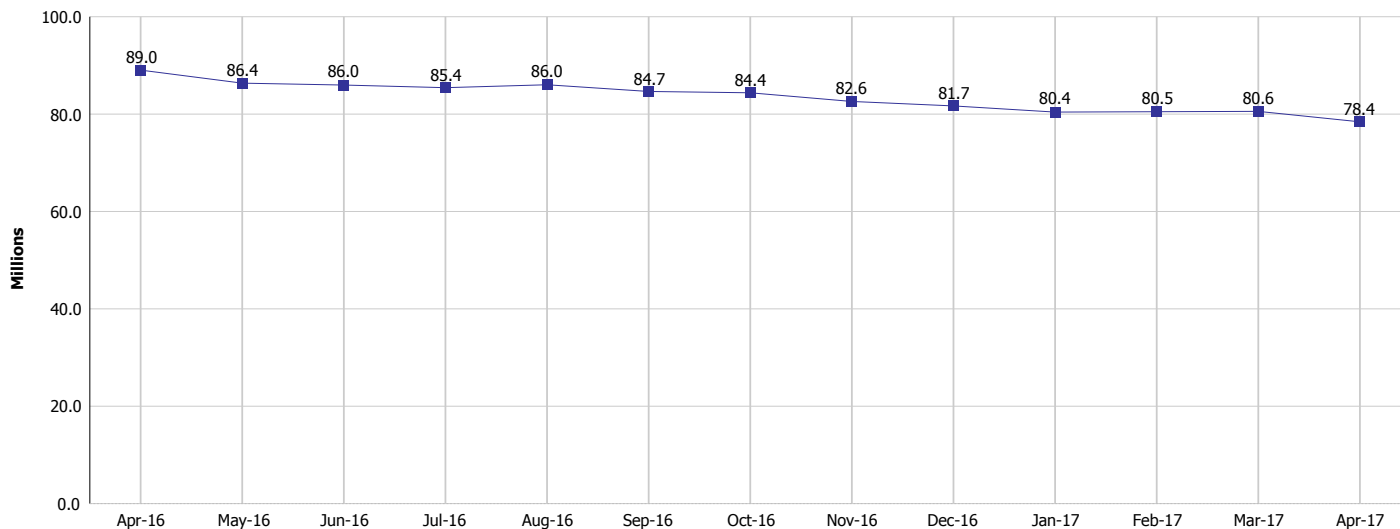
## Monthly Management Report

Reporting Month: April 2017

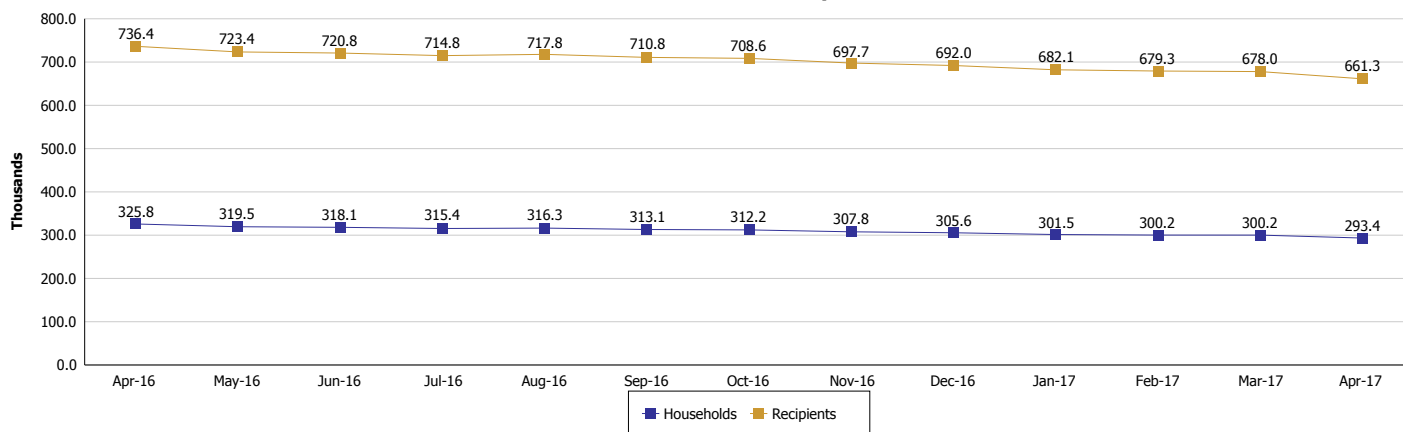
Location: Statewide

### SUPPLEMENTAL NUTRITION ASSISTANCE PROGRAM (SNAP)

#### SNAP Issuance



#### SNAP Households and Recipients



**Note:**

All data July 2014 and following will be broken out according to the new DFR region structure effective July 1 2014.



## DIVISION OF FAMILY RESOURCES

### Monthly Management Report

Reporting Month: April 2017

Location: Statewide

#### HIP 2.0 and SNAP

	April 2017	March 2017	April 2016	Annual Change
Total HIP 2.0 Members	437,293	439,796	397,902	9.90%
HIP Members also SNAP Recipients	154,320	157,725	165,674	-6.85%
Percentage HIP Members SNAP Recipients	35.3%	35.9%	41.6%	4.56%
HIP Members SNAP ABAWDs	4,664	5,146	6,718	-30.57%
Percentage HIP Members SNAP ABAWDs	1.1%	1.2%	1.7%	4.56%

**Note:**

All data July 2014 and following will be broken out according to the new DFR region structure effective July 1 2014.



## DIVISION OF FAMILY RESOURCES

### Monthly Management Report

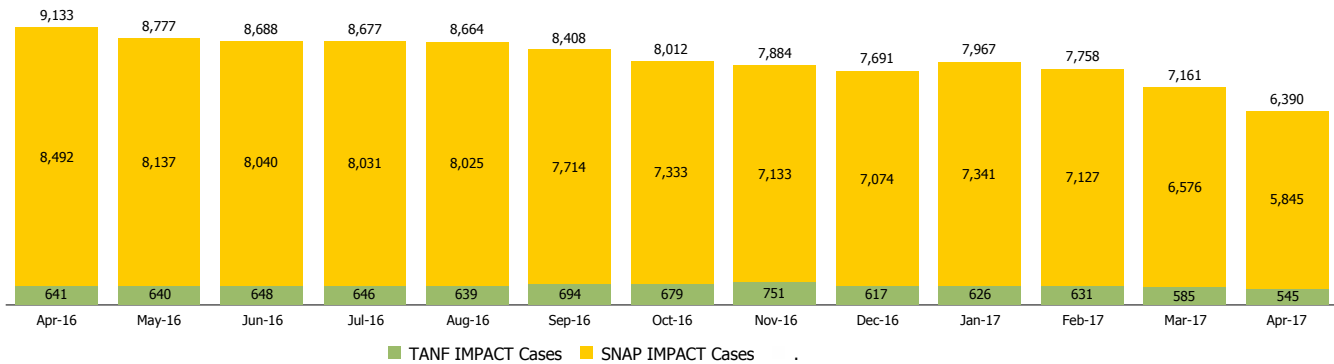
Reporting Month: April 2017

Location: Statewide

#### INDIANA MANPOWER PLACEMENT AND COMPREHENSIVE TRAINING (IMPACT)

	April 2017	March 2017	April 2016	Annual Change
Number of IMPACT cases	6,390	7,161	9,133	-30.03%
Number of TANF IMPACT adults	545	585	641	-14.98%
Number of SNAP IMPACT Cases	5,845	6,576	8,492	-31.17%
Total number of adults employed	2,411	1,351	1,411	70.87%
Number of TANF IMPACT adults newly employed (within past 30 days)	221	137	123	79.67%
Number of SNAP IMPACT adults employed	2,190	1,214	1,288	70.03%
Total number of adults ineligible due to employment	6,223	5,394	7,043	-11.64%
Number of TANF adults ineligible due to employment	17	20	27	-37.04%
Number of SNAP adults ineligible due to employment	6,206	5,374	7,016	-11.55%

**IMPACT Caseloads**  
(SNAP, TANF, Total Caseload)



**Note:**

All data July 2014 and following will be broken out according to the new DFR region structure effective July 1 2014.