



DIVISION OF FAMILY RESOURCES

Statewide Monthly Management Report February 2026

State of Indiana

Mike Braun
Governor

Family and Social Services Administration

Mitch Roob
Secretary

Division of Family Resources

Sunshine Beam
Director

For questions regarding data on this report contact:
office.Communications@fssa.IN.gov



State of Indiana

Published March 2026



DIVISION OF FAMILY RESOURCES

Monthly Management Report

Reporting Month: February 2026

Location: Statewide

TEMPORARY ASSISTANCE FOR NEEDY FAMILIES (TANF)

Child-Only and One-Parent Families	February 2026	January 2026	February 2025	Annual Change
Number of families receiving TANF Grants	4,629	4,620	4,988	-7.20%
Total number of grant recipients	11,039	10,985	11,522	-4.19%
Number of adult grant recipients	2,075	2,056	2,177	-4.69%
Number of child grant recipients	8,964	8,929	9,345	-4.08%
Total payments	\$1,876,971	\$1,871,592	\$2,002,660	-6.28%
Average payment per case	\$405.48	\$405.11	\$401.50	0.99%
Average payment per recipient	\$170.03	\$170.38	\$173.81	-2.18%
Number of cases with benefits reduced to zero	113	110	108	4.63%
Number of recipients with benefits reduced to zero	224	221	177	26.55%
Number of adult recipients with benefit reduced to zero	26	26	29	-10.34%
Number of child recipients with benefit reduced to zero	198	195	148	33.78%

Pregnancy TANF Families	February 2026	January 2026	February 2025	Annual Change
Number of families receiving TANF Grants	106	100	120	-11.67%
Total number of grant recipients	106	100	120	-11.67%
Total payments	\$25,797.00	\$24,383.00	\$29,679.00	-13.08%
Average payment per case	\$243.37	\$243.83	\$247.32	-1.60%
Average payment per recipient	\$243.37	\$243.83	\$247.32	-1.60%
Number of cases with benefits reduced to zero	0	0	6	-100.00%
Number of recipients with benefits reduced to zero	0	0	6	-100.00%



DIVISION OF FAMILY RESOURCES

Monthly Management Report

Two-Parent Families	February 2026	January 2026	February 2025	Annual Change
Number of families receiving TANF Grants	75	74	439	-82.92%
Total number of grant recipients	295	296	1,736	-83.01%
Number of adult grant recipients	135	136	869	-84.46%
Number of child grant recipients	160	160	867	-81.55%
Total payments	\$42,874	\$42,509	\$251,903	-82.98%
Average payment per case	\$571.65	\$574.45	\$573.81	-0.38%
Average payment per recipient	\$145.34	\$143.61	\$145.11	0.16%
Number of cases with benefits reduced to zero	2	2	1	100.00%
Number of recipients with benefits reduced to zero	10	10	3	233.33%
Number of adult recipients with benefit reduced to zero	4	4	2	100.00%
Number of child recipients with benefit reduced to zero	6	6	1	500.00%

Note: The two-parent case count includes cases in which a parent living in the home is excluded from receiving TANF benefits but whose income is used in the TANF eligibility determination.



DIVISION OF FAMILY RESOURCES

Monthly Management Report

Reporting Month: February 2026

Location: Statewide

TANF - APPLICATIONS

	February 2026	January 2026	February 2025	Annual Change
Number of Applications	4,461	5,480	4,959	-10.04%



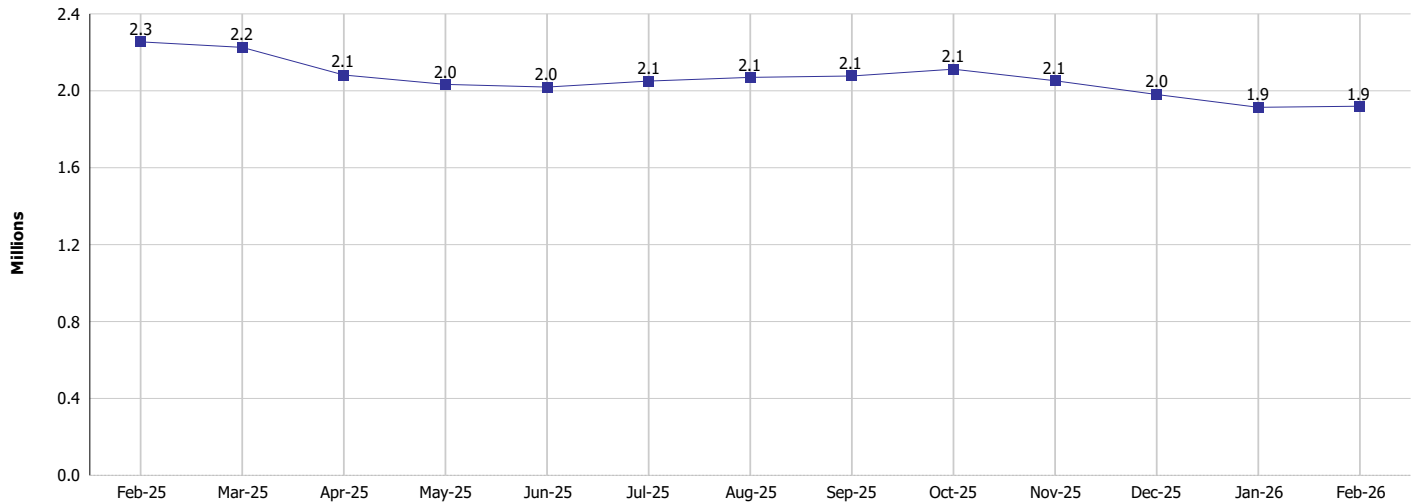
DIVISION OF FAMILY RESOURCES

Monthly Management Report

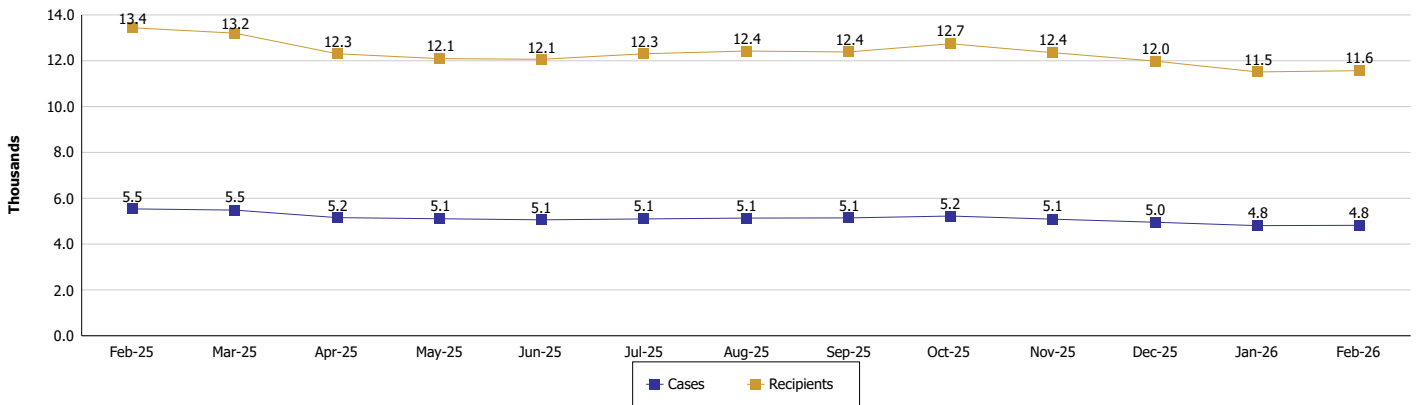
Reporting Month: February 2026 Location: Statewide

TEMPORARY ASSISTANCE FOR NEEDY FAMILIES (TANF)

TANF Cash Assistance
(TANF Regular and TANF Two-Parent)



TANF Cases and Recipients
(TANF Regular and TANF Two-Parent)





DIVISION OF FAMILY RESOURCES

Monthly Management Report

Reporting Month: February 2026

Location: Statewide

SUPPLEMENTAL NUTRITION ASSISTANCE PROGRAM (SNAP)

	February 2026	January 2026	February 2025	Annual Change
Total issuance	\$104,592,254	\$104,735,795	\$117,179,831	-10.74%
Number of households receiving SNAP benefits	257,679	258,858	284,142	-9.31%
Number of recipients	528,344	530,828	596,471	-11.42%
Average issuance per household	\$405.90	\$404.61	\$412.40	-1.58%
Average issuance per recipient	\$197.96	\$197.31	\$196.46	0.77%
Number of Applications	29,864	35,155	32,005	-6.69%



DIVISION OF FAMILY RESOURCES

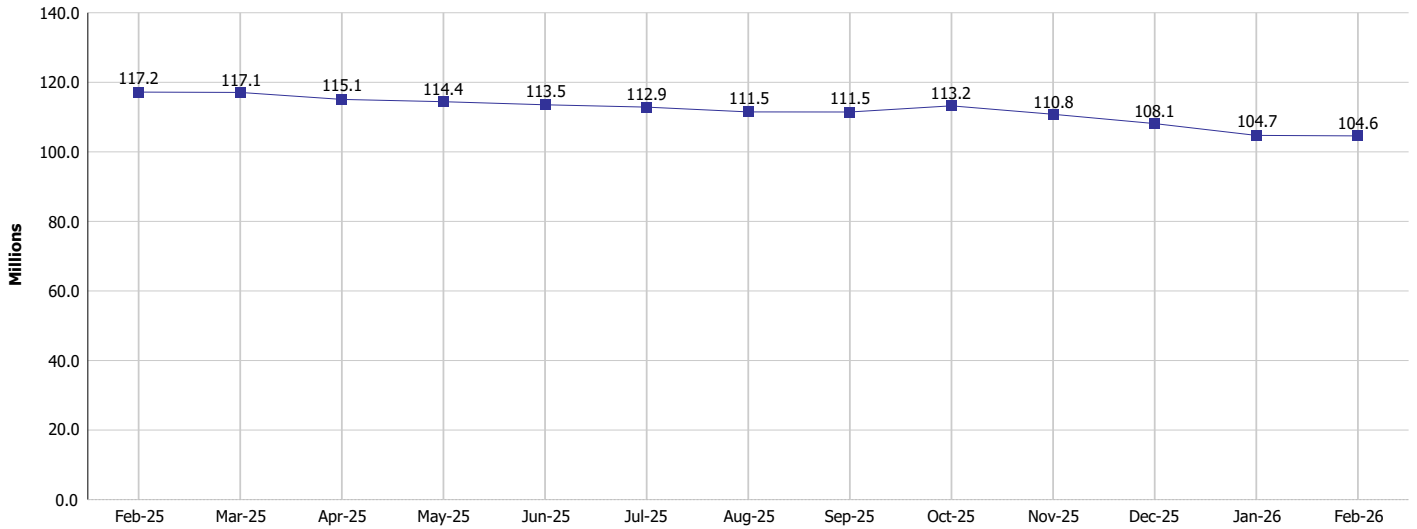
Monthly Management Report

Reporting Month: February 2026

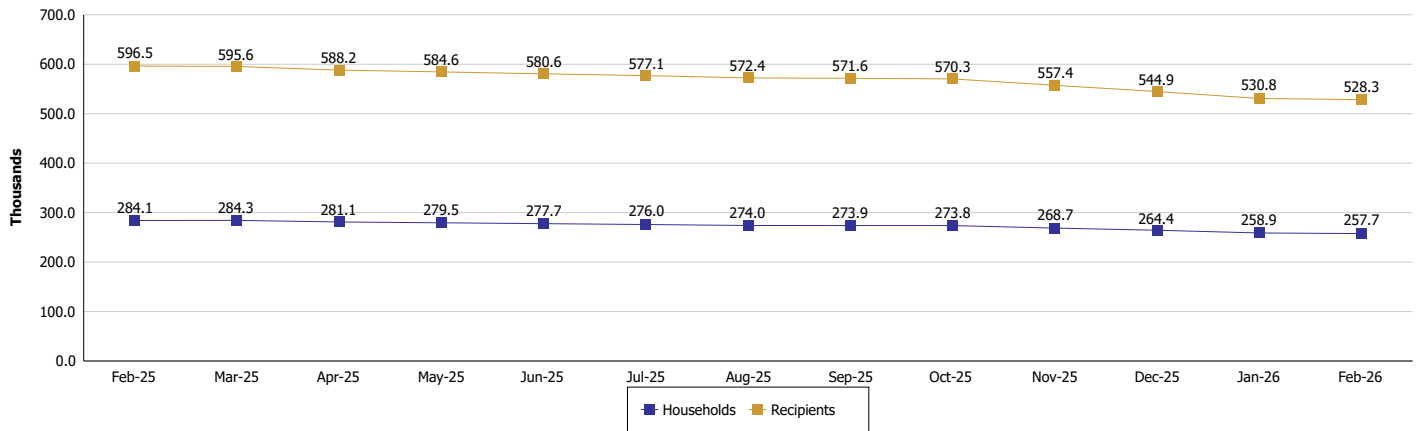
Location: Statewide

SUPPLEMENTAL NUTRITION ASSISTANCE PROGRAM (SNAP)

SNAP Issuance



SNAP Households and Recipients





DIVISION OF FAMILY RESOURCES

Monthly Management Report

Reporting Month: February 2026

Location: Statewide

HIP 2.0 and SNAP

	February 2026	January 2026	February 2025	Annual Change
Total HIP 2.0 Members	573,366	585,407	755,542	-24.11%
HIP Members also SNAP Recipients	150,636	151,983	178,539	-15.63%
Percentage HIP Members SNAP Recipients	26.3%	26.0%	23.6%	2.64
HIP Members SNAP ABAWDs	16,359	5,176	5,214	213.75%
Percentage HIP Members SNAP ABAWDs	2.9%	0.9%	0.7%	2.2



DIVISION OF FAMILY RESOURCES

Monthly Management Report

Reporting Month: February 2026

Location: Statewide

INDIANA MANPOWER PLACEMENT AND COMPREHENSIVE TRAINING (IMPACT)

	February 2026	January 2026	February 2025	Annual Change
Number of IMPACT cases	721	388	468	54.06%
Number of TANF IMPACT adults	243	126	164	48.17%
Number of SNAP IMPACT Cases	478	262	304	57.24%
Total number of adults employed	1,630	992	1,262	29.16%
Number of TANF IMPACT adults newly employed (within past 30 days)	59	49	59	0.00%
Number of SNAP IMPACT adults employed	1,571	943	1,203	30.59%
Total number of adults ineligible due to employment	1,292	2,251	1,728	-25.23%
Number of TANF adults ineligible due to employment	32	51	77	-58.44%
Number of SNAP adults ineligible due to employment	1,260	2,200	1,651	-23.68%

