



DIVISION OF FAMILY RESOURCES

Monthly Management Report October 2020

State of Indiana

Eric Holcomb
Governor

Family and Social Services Administration

Jennifer Sullivan, M.D.
Secretary

Division of Family Resources

Adrienne Shields
Director

For questions regarding data on this report contact:
office.Communications@fssa.IN.gov



State of Indiana

Published November 2020



DIVISION OF FAMILY RESOURCES

Monthly Management Report

Reporting Month: October 2020

Location: Statewide

TEMPORARY ASSISTANCE FOR NEEDY FAMILIES (TANF)

Child-Only and One-Parent Families	Oct 31, 2020	September 2020	October 2019	Annual Change
Number of families receiving TANF Grants	7,540	7,330	5,255	43.48%
Total number of grant recipients	17,130	16,527	11,006	55.64%
Number of adult grant recipients	3,531	3,351	1,534	130.18%
Number of child grant recipients	13,599	13,176	9,472	43.57%
Total payments	\$1,577,659	\$1,525,648	\$1,033,389	52.67%
Average payment per case	\$209.24	\$208.14	\$196.65	6.40%
Average payment per recipient	\$92.10	\$92.31	\$93.89	-1.91%
Number of cases with benefits reduced to zero	335	330	1,362	-75.40%
Number of recipients with benefits reduced to zero	787	804	1,076	-26.86%
Number of adult recipients with benefit reduced to zero	228	234	37	516.22%
Number of child recipients with benefit reduced to zero	559	570	1,039	-46.20%

Two-Parent Families	Oct 31, 2020	September 2020	October 2019	Annual Change
Number of families receiving TANF Grants	675	620	231	192.21%
Total number of grant recipients	2,313	2,135	868	166.47%
Number of adult grant recipients	764	721	310	146.45%
Number of child grant recipients	1,549	1,414	558	177.60%
Total payments	\$181,974	\$167,506	\$54,955	231.13%
Average payment per case	\$269.59	\$270.17	\$237.90	13.32%
Average payment per recipient	\$78.67	\$78.46	\$63.31	24.26%
Number of cases with benefits reduced to zero	40	44	53	-24.53%
Number of recipients with benefits reduced to zero	162	177	53	205.66%
Number of adult recipients with benefit reduced to zero	66	72	10	560.00%
Number of child recipients with benefit reduced to zero	96	105	43	123.26%

Note:

All data July 2014 and following will be broken out according to the new DFR region structure effective July 1 2014.

Source:



DIVISION OF FAMILY RESOURCES

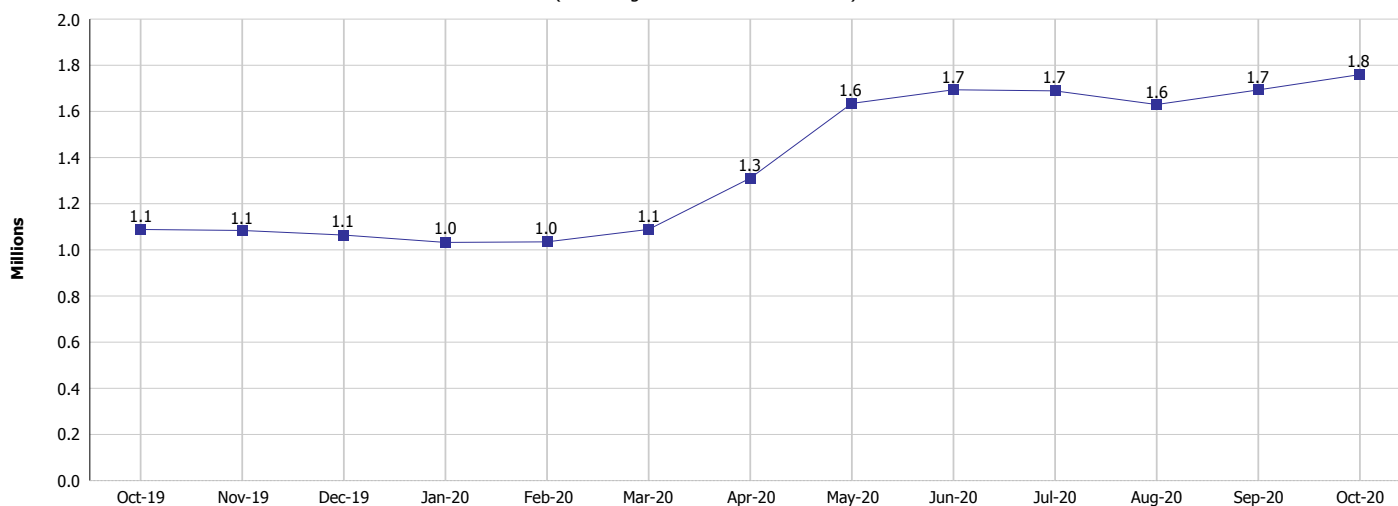
Monthly Management Report

Reporting Month: October 2020

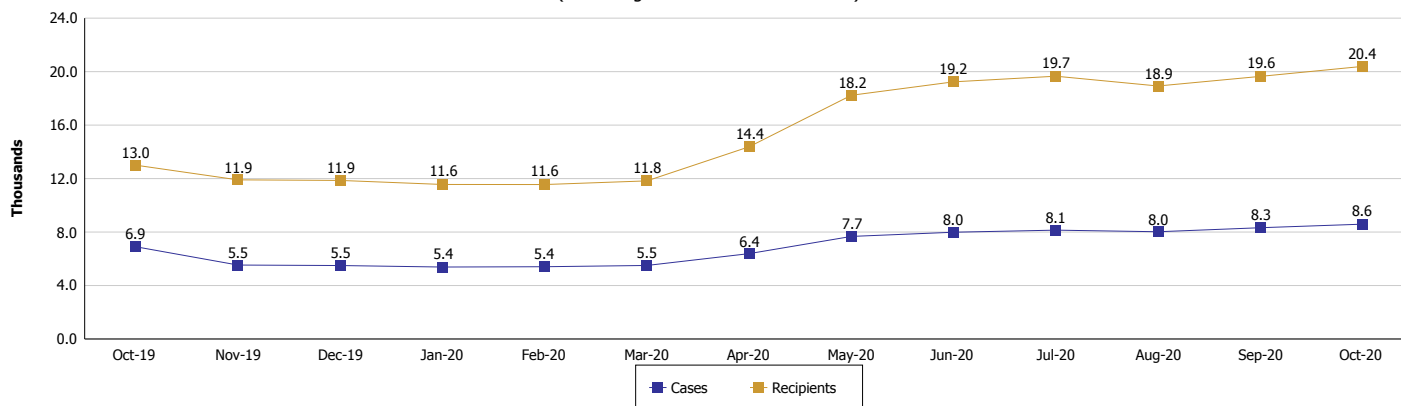
Location: Statewide

TEMPORARY ASSISTANCE FOR NEEDY FAMILIES (TANF)

TANF Cash Assistance
(TANF Regular and TANF Two-Parent)



TANF Cases and Recipients
(TANF Regular and TANF Two-Parent)



Note:

All data July 2014 and following will be broken out according to the new DFR region structure effective July 1 2014.

Monthly Management Report

Reporting Month: October 2020 Location: Statewide

SUPPLEMENTAL NUTRITION ASSISTANCE PROGRAM (SNAP)

	October 2020	September 2020	October 2019	Annual Change
Total issuance	\$120,214,753	\$115,962,141	\$68,764,584	74.82%
Number of households receiving SNAP benefits	295,693	300,332	257,225	14.96%
Number of recipients	638,096	646,126	571,439	11.66%
Average issuance per household	\$406.55	\$386.11	\$267.33	52.08%
Average issuance per recipient	\$188.40	\$179.47	\$120.34	56.56%

Note:
All data July 2014 and following will be broken out according to the new DFR region structure effective July 1 2014.

SNAP ERROR RATES

	June 2020	Cumulative FFY
FFY Cumulative Positive Error Rate	7.65%	
Monthly Positive Error Rate	9.49%	NA
FFY Cumulative Negative Error Rate	45.55%	
Monthly Negative Error Rate	60.00%	NA

Note:
All data July 2014 and following will be broken out according to the new DFR region structure effective July 1 2014.

Notes:
Reporting periods for SNAP Error Rates reflect the review period and Federal submission deadline. The month reported above is the month in which an action was taken included in the review sample.
Positive actions are those which produced an issuance of benefits to a household. Negative actions are those which closed or denied benefits to a household.
Error Rate data is reported by the state before the federal agency has accepted and finalized the results. This rate is subject to revision based upon: completion and submission of outstanding reviews; final review corrections; and completion of previously dropped reviews. Monthly numbers are taken from end-of-month totals. The error status of cases may be changed by the State or Federal Review process, which would cause a change that might not be reflected in the previous monthly numbers.



DIVISION OF FAMILY RESOURCES

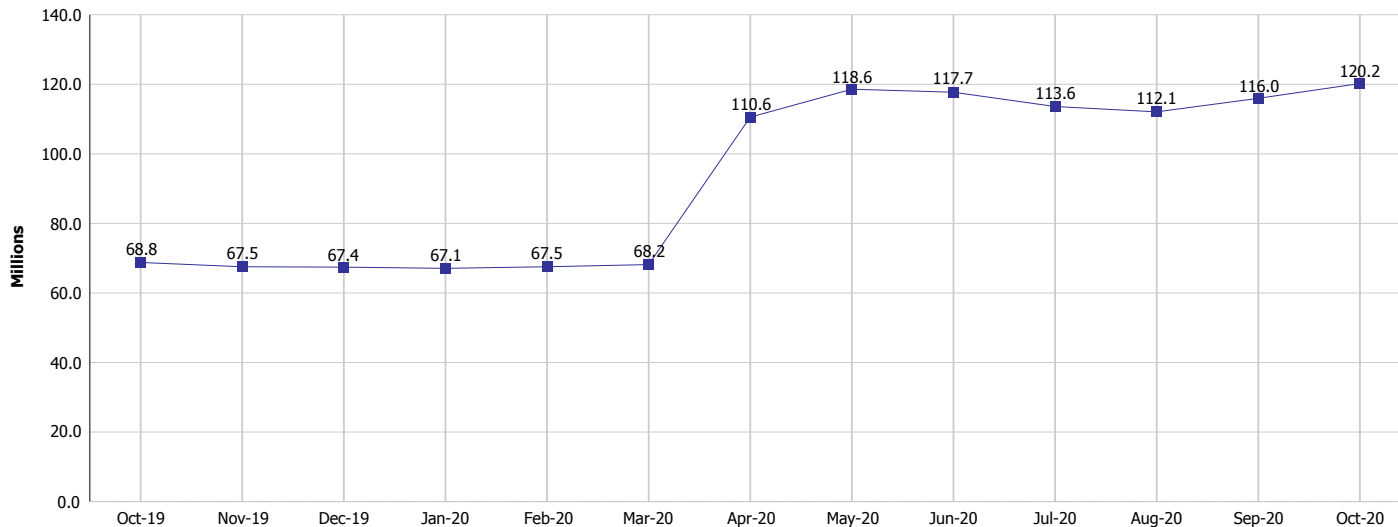
Monthly Management Report

Reporting Month: October 2020

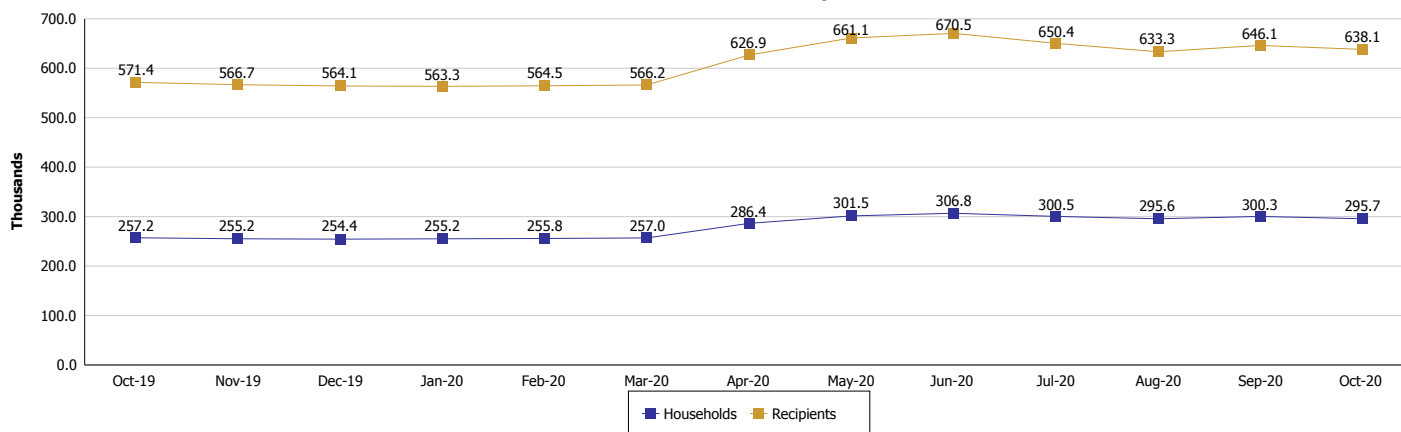
Location: Statewide

SUPPLEMENTAL NUTRITION ASSISTANCE PROGRAM (SNAP)

SNAP Issuance



SNAP Households and Recipients



Note:

All data July 2014 and following will be broken out according to the new DFR region structure effective July 1 2014.



DIVISION OF FAMILY RESOURCES

Monthly Management Report

Reporting Month: October 2020

Location: Statewide

HIP 2.0 and SNAP

	October 2020	September 2020	October 2019	Annual Change
Total HIP 2.0 Members	583,117	566,546	433,099	34.64%
HIP Members also SNAP Recipients	180,163	180,488	141,036	27.74%
Percentage HIP Members SNAP Recipients	30.9%	31.9%	32.6%	-1.67
HIP Members SNAP ABAWDs	0	402	3,745	-100.00%
Percentage HIP Members SNAP ABAWDs	0	0.1%	0.9%	-0.9

Note:

All data July 2014 and following will be broken out according to the new DFR region structure effective July 1 2014.



DIVISION OF FAMILY RESOURCES

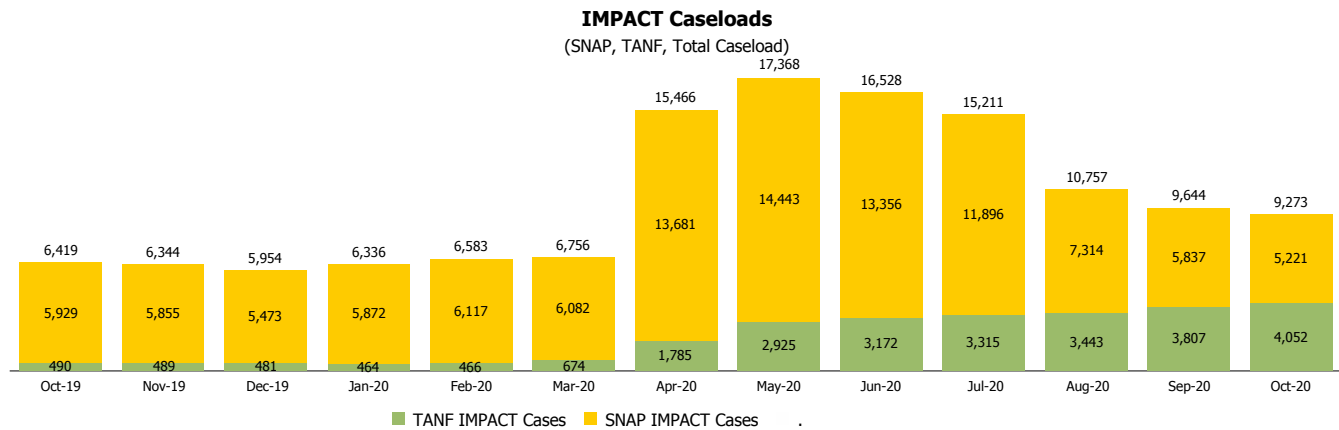
Monthly Management Report

Reporting Month: October 2020

Location: Statewide

INDIANA MANPOWER PLACEMENT AND COMPREHENSIVE TRAINING (IMPACT)

	October 2020	September 2020	October 2019	Annual Change
Number of IMPACT cases	9,273	9,644	6,419	44.46%
Number of TANF IMPACT adults	4,052	3,807	490	726.94%
Number of SNAP IMPACT Cases	5,221	5,837	5,929	-11.94%
Total number of adults employed	734	1,024	1,152	-36.28%
Number of TANF IMPACT adults newly employed (within past 30 days)	173	255	93	86.02%
Number of SNAP IMPACT adults employed	561	769	1,059	-47.03%
Total number of adults ineligible due to employment	2,925	2,893	4,892	-40.21%
Number of TANF adults ineligible due to employment	26	14	22	18.18%
Number of SNAP adults ineligible due to employment	2,899	2,879	4,870	-40.47%



Note:

All data July 2014 and following will be broken out according to the new DFR region structure effective July 1 2014.