



DIVISION OF FAMILY RESOURCES

Statewide Monthly Management Report October 2022

State of Indiana

Eric Holcomb
Governor

Family and Social Services Administration

Dan Rusyniak, MD
Secretary

Division of Family Resources

Adrienne Shields
Director

For questions regarding data on this report contact:
office.Communications@fssa.IN.gov



State of Indiana

Published November 2022



DIVISION OF FAMILY RESOURCES

Monthly Management Report

Reporting Month: October 2022

Location: Statewide

TEMPORARY ASSISTANCE FOR NEEDY FAMILIES (TANF)

Child-Only and One-Parent Families	October 2022	September 2022	October 2021	Annual Change
Number of families receiving TANF Grants	3,842	3,779	5,345	-28.12%
Total number of grant recipients	7,687	7,462	11,413	-32.65%
Number of adult grant recipients	797	723	1,856	-57.06%
Number of child grant recipients	6,890	6,739	9,557	-27.91%
Total payments	\$750,816	\$731,060	\$1,090,125	-31.13%
Average payment per case	\$195.42	\$193.45	\$203.95	-4.18%
Average payment per recipient	\$97.67	\$97.97	\$95.52	2.26%
Number of cases with benefits reduced to zero	90	94	255	-64.71%
Number of recipients with benefits reduced to zero	170	174	592	-71.28%
Number of adult recipients with benefit reduced to zero	26	25	146	-82.19%
Number of child recipients with benefit reduced to zero	144	149	446	-67.71%

Two-Parent Families	October 2022	September 2022	October 2021	Annual Change
Number of families receiving TANF Grants	401	340	349	14.90%
Total number of grant recipients	1,433	1,202	1,140	25.70%
Number of adult grant recipients	571	471	398	43.47%
Number of child grant recipients	862	731	742	16.17%
Total payments	\$120,202	\$100,045	\$97,869	22.82%
Average payment per case	\$299.76	\$294.25	\$280.43	6.89%
Average payment per recipient	\$83.88	\$83.23	\$85.85	-2.29%
Number of cases with benefits reduced to zero	0	0	9	-100.00%
Number of recipients with benefits reduced to zero	0	0	43	-100.00%
Number of adult recipients with benefit reduced to zero	0	0	18	-100.00%
Number of child recipients with benefit reduced to zero	0	0	25	-100.00%

Note:

For August 2021, a one time payment of \$400 per recipient was included in the Total payments and Average payments. TANF section rules changed to reflect Federal reporting logic effective September 2021.
 For August 2022, a one-time payment of \$269 per recipient was included in the Total payments and Average payments.

Source:



DIVISION OF FAMILY RESOURCES

Monthly Management Report

Reporting Month: October 2022

Location: Statewide

TANF - APPLICATIONS

	October 2022	September 2022	October 2021	Annual Change
Number of Applications	3,628	4,051	3,905	-7.09%



DIVISION OF FAMILY RESOURCES

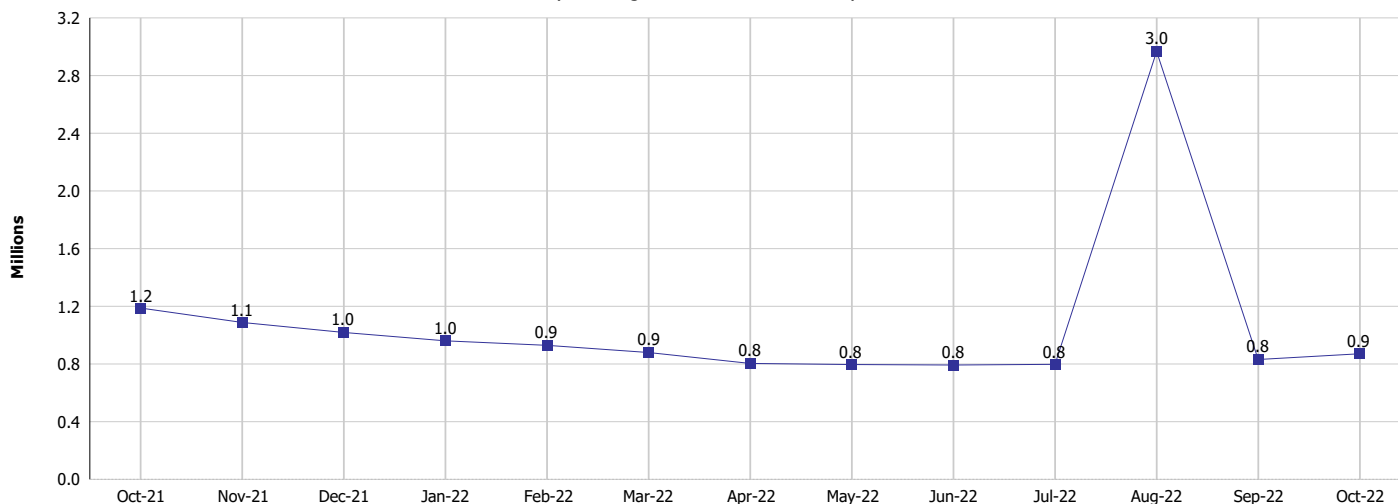
Monthly Management Report

Reporting Month: October 2022

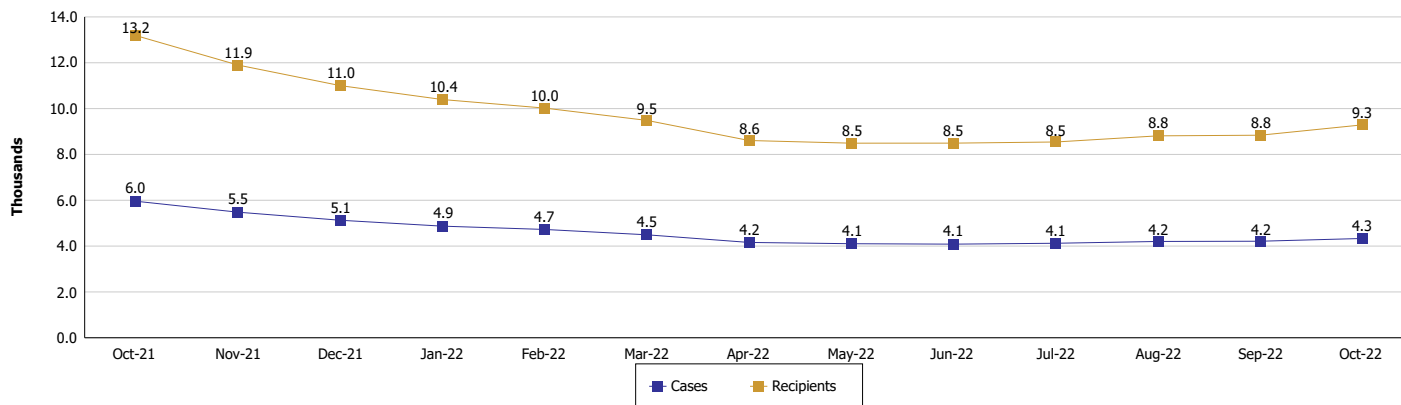
Location: Statewide

TEMPORARY ASSISTANCE FOR NEEDY FAMILIES (TANF)

TANF Cash Assistance (TANF Regular and TANF Two-Parent)



TANF Cases and Recipients (TANF Regular and TANF Two-Parent)



Note:

For August 2021, a one time payment of \$400 per recipient was included in the Total payments and Average payments. TANF section rules changed to reflect Federal reporting logic effective September 2021.

For August 2022, a one-time payment of \$269 per recipient was included in the Total payments and Average payments.



DIVISION OF FAMILY RESOURCES

Monthly Management Report

Reporting Month: October 2022

Location: Statewide

SUPPLEMENTAL NUTRITION ASSISTANCE PROGRAM (SNAP)

	October 2022	September 2022	October 2021	Annual Change
Total issuance	\$114,638,031	\$100,508,566	\$153,380,697	-25.26%
Number of households receiving SNAP benefits	283,891	284,992	291,959	-2.76%
Number of recipients	599,390	601,841	621,409	-3.54%
Average issuance per household	\$403.81	\$352.67	\$525.35	-23.14%
Average issuance per recipient	\$191.26	\$167.00	\$246.83	-22.51%
Number of Applications	22,174	23,122	22,581	-1.80%



DIVISION OF FAMILY RESOURCES

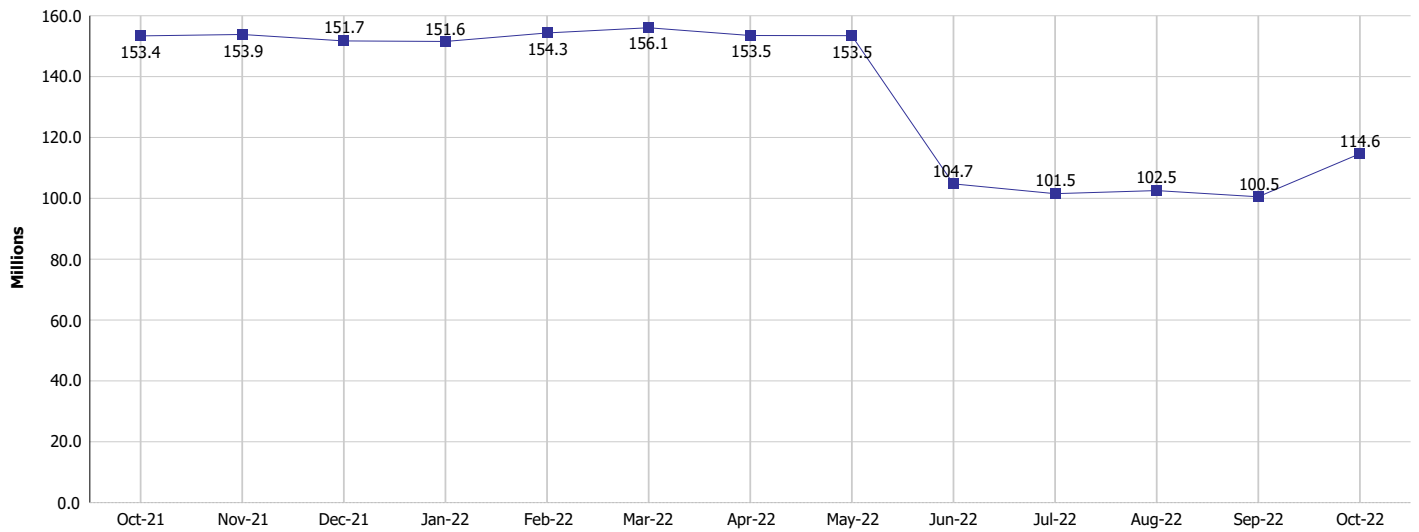
Monthly Management Report

Reporting Month: October 2022

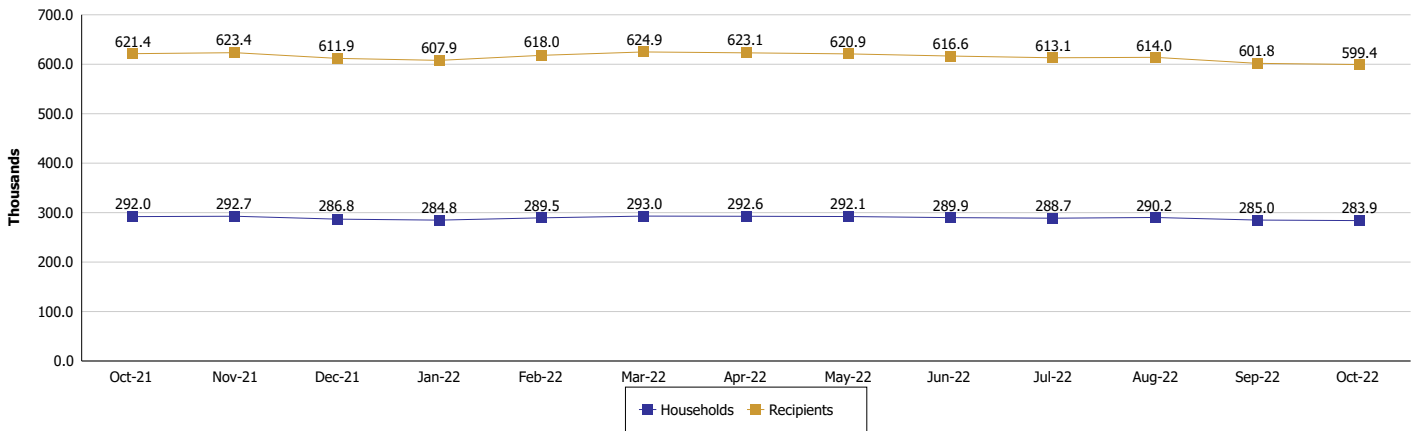
Location: Statewide

SUPPLEMENTAL NUTRITION ASSISTANCE PROGRAM (SNAP)

SNAP Issuance



SNAP Households and Recipients



Note:

Run Date: Nov 12, 2022



DIVISION OF FAMILY RESOURCES

Monthly Management Report

Reporting Month: October 2022

Location: Statewide

HIP 2.0 and SNAP

	October 2022	September 2022	October 2021	Annual Change
Total HIP 2.0 Members	818,976	811,850	722,799	13.31%
HIP Members also SNAP Recipients	181,766	183,023	185,780	-2.16%
Percentage HIP Members SNAP Recipients	22.2%	22.5%	25.7%	-3.51
HIP Members SNAP ABAWDs	13,379	11,672	0	0%
Percentage HIP Members SNAP ABAWDs	1.6%	1.4%	0	1.6



DIVISION OF FAMILY RESOURCES

Monthly Management Report

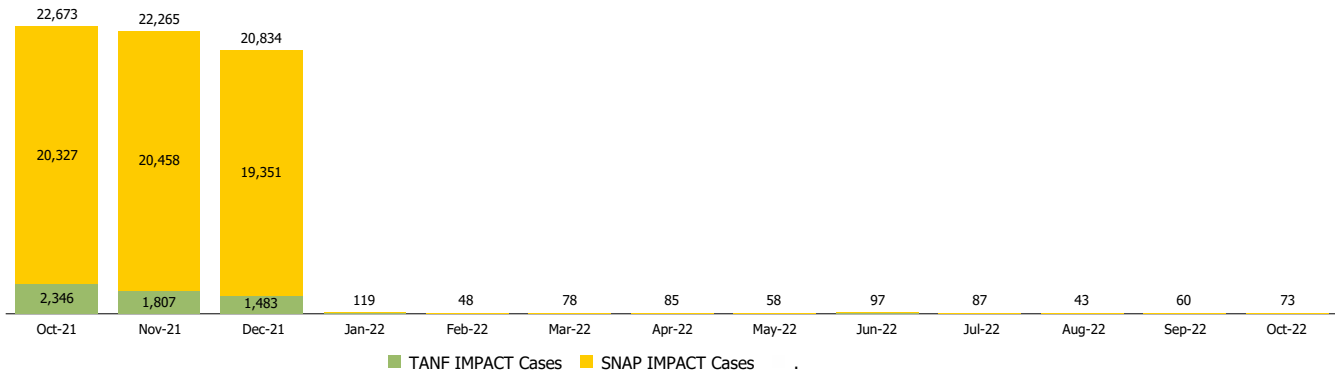
Reporting Month: October 2022

Location: Statewide

INDIANA MANPOWER PLACEMENT AND COMPREHENSIVE TRAINING (IMPACT)

	October 2022	September 2022	October 2021	Annual Change
Number of IMPACT cases	73	60	22,673	-99.68%
Number of TANF IMPACT adults	31	26	2,346	-98.68%
Number of SNAP IMPACT Cases	42	34	20,327	-99.79%
Total number of adults employed	3,095	3,373	2,548	21.47%
Number of TANF IMPACT adults newly employed (within past 30 days)	46	37	118	-61.02%
Number of SNAP IMPACT adults employed	3,049	3,336	2,430	25.47%
Total number of adults ineligible due to employment	1,313	1,636	2,235	-41.25%
Number of TANF adults ineligible due to employment	17	27	18	-5.56%
Number of SNAP adults ineligible due to employment	1,296	1,609	2,217	-41.54%

IMPACT Caseloads
(SNAP, TANF, Total Caseload)



Note:

Effective January 2022, these numbers have been adjusted to reflect only those actually participating in IMPACT.