



## DIVISION OF FAMILY RESOURCES

# Monthly Management Report November 2021

### State of Indiana

Eric Holcomb  
Governor

### Family and Social Services Administration

Dan Rusyniak, MD  
Secretary

### Division of Family Resources

Adrienne Shields  
Director

For questions regarding data on this report contact:  
[office.Communications@fssa.IN.gov](mailto:office.Communications@fssa.IN.gov)



## State of Indiana

Published January 2022



## DIVISION OF FAMILY RESOURCES

### Monthly Management Report

Reporting Month: November 2021

Location: Statewide

#### TEMPORARY ASSISTANCE FOR NEEDY FAMILIES (TANF)

Child-Only and One-Parent Families	Nov 30, 2021	October 2021	November 2020	Annual Change
Number of families receiving TANF Grants	4,961	5,345	7,690	-35.49%
Total number of grant recipients	10,438	11,413	17,466	-40.24%
Number of adult grant recipients	1,536	1,856	3,664	-58.08%
Number of child grant recipients	8,902	9,557	13,802	-35.50%
Total payments	\$1,003,449	\$1,090,125	\$1,617,230	-37.95%
Average payment per case	\$202.27	\$203.95	\$210.30	-3.82%
Average payment per recipient	\$96.13	\$95.52	\$92.59	3.82%
Number of cases with benefits reduced to zero	206	255	342	-39.77%
Number of recipients with benefits reduced to zero	442	592	797	-44.54%
Number of adult recipients with benefit reduced to zero	104	146	227	-54.19%
Number of child recipients with benefit reduced to zero	338	446	570	-40.70%

Two-Parent Families	Nov 30, 2021	October 2021	November 2020	Annual Change
Number of families receiving TANF Grants	308	349	720	-57.22%
Total number of grant recipients	999	1,140	2,465	-59.47%
Number of adult grant recipients	337	398	812	-58.50%
Number of child grant recipients	662	742	1,653	-59.95%
Total payments	\$84,519	\$97,869	\$192,995	-56.21%
Average payment per case	\$274.41	\$280.43	\$268.05	2.37%
Average payment per recipient	\$84.60	\$85.85	\$78.29	8.06%
Number of cases with benefits reduced to zero	5	9	50	-90.00%
Number of recipients with benefits reduced to zero	22	43	196	-88.78%
Number of adult recipients with benefit reduced to zero	10	18	77	-87.01%
Number of child recipients with benefit reduced to zero	12	25	119	-89.92%

**Note:**

\*For August 2021, a one time payment of \$400 per recipient was included in the Total payments and Average payments.

Source:



# DIVISION OF FAMILY RESOURCES

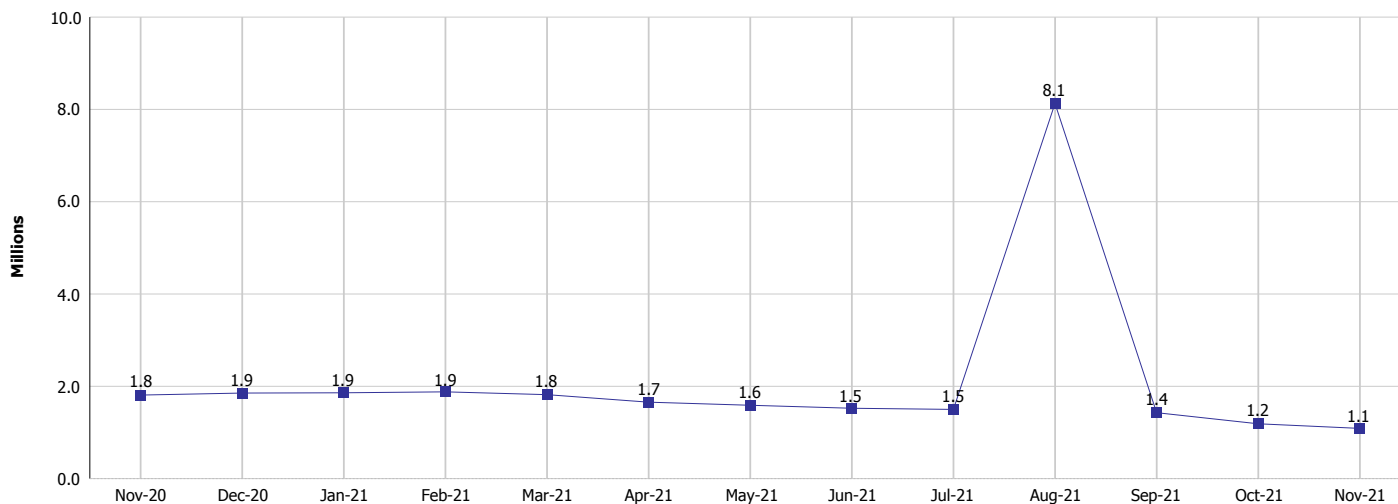
## Monthly Management Report

Reporting Month: November 2021

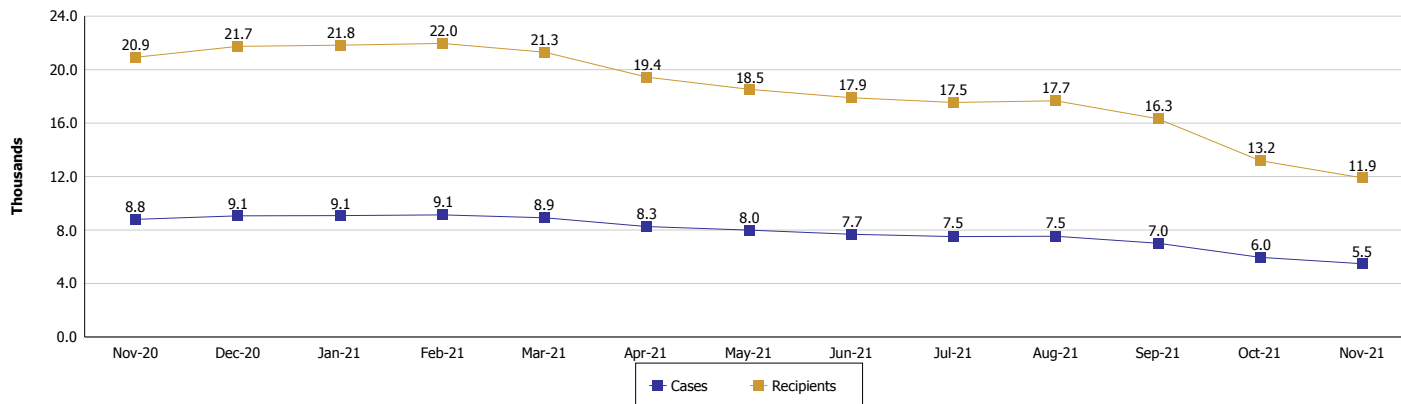
Location: Statewide

### TEMPORARY ASSISTANCE FOR NEEDY FAMILIES (TANF)

#### TANF Cash Assistance (TANF Regular and TANF Two-Parent)



#### TANF Cases and Recipients (TANF Regular and TANF Two-Parent)



**Note:**

\*For August 2021, a one time payment of \$400 per recipient was included in the Total payments and Average payments.



## DIVISION OF FAMILY RESOURCES

### Monthly Management Report

Reporting Month: November 2021

Location: Statewide

#### SUPPLEMENTAL NUTRITION ASSISTANCE PROGRAM (SNAP)

	November 2021	October 2021	November 2020	Annual Change
Total issuance	\$153,850,045	\$153,380,697	\$119,463,671	28.78%
Number of households receiving SNAP benefits	292,710	291,959	294,168	-0.50%
Number of recipients	623,407	621,409	635,829	-1.95%
Average issuance per household	\$525.61	\$525.35	\$406.11	29.43%
Average issuance per recipient	\$246.79	\$246.83	\$187.89	31.35%

**Note:**

All data July 2014 and following will be broken out according to the new DFR region structure effective July 1 2014.

#### SNAP ERROR RATES

	July 2021	Cumulative FFY
FFY Cumulative Positive Error Rate	10.44%	
Monthly Positive Error Rate	10.44%	NA
FFY Cumulative Negative Error Rate	43.40%	
Monthly Negative Error Rate	43.40%	NA

**Note:**

All data July 2014 and following will be broken out according to the new DFR region structure effective July 1 2014.

**Notes:**

Reporting periods for SNAP Error Rates reflect the review period and Federal submission deadline. The month reported above is the month in which an action was taken included in the review sample.

Positive actions are those which produced an issuance of benefits to a household. Negative actions are those which closed or denied benefits to a household.

Error Rate data is reported by the state before the federal agency has accepted and finalized the results. This rate is subject to revision based upon: completion and submission of outstanding reviews; final review corrections; and completion of previously dropped reviews. Monthly numbers are taken from end-of-month totals. The error status of cases may be changed by the State or Federal Review process, which would cause a change that might not be reflected in the previous monthly numbers.



# DIVISION OF FAMILY RESOURCES

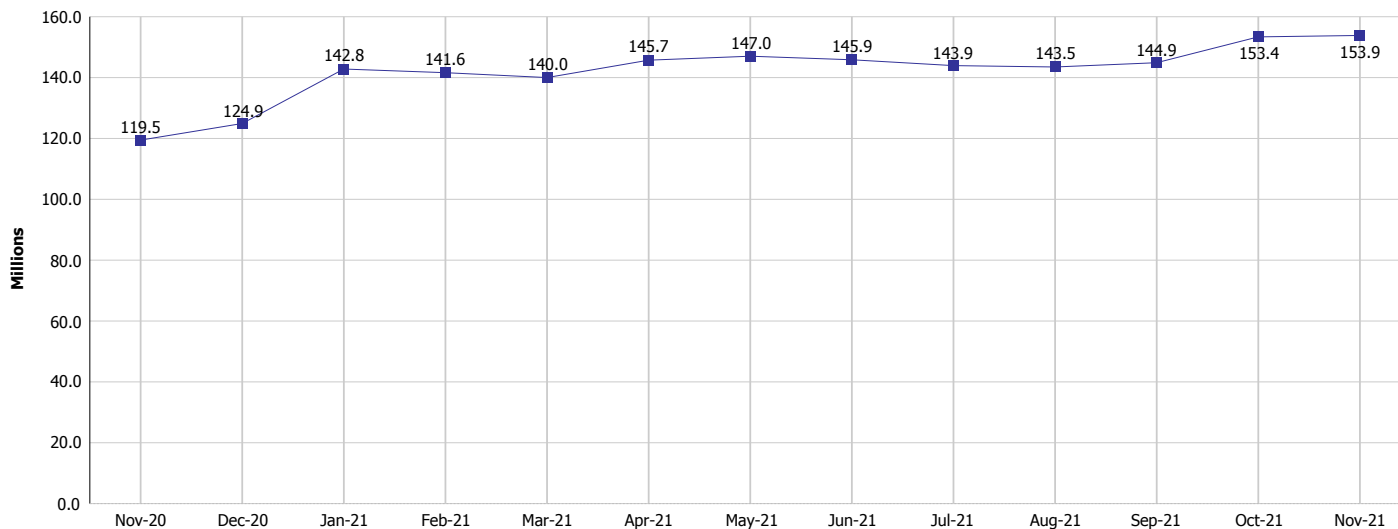
## Monthly Management Report

Reporting Month: November 2021

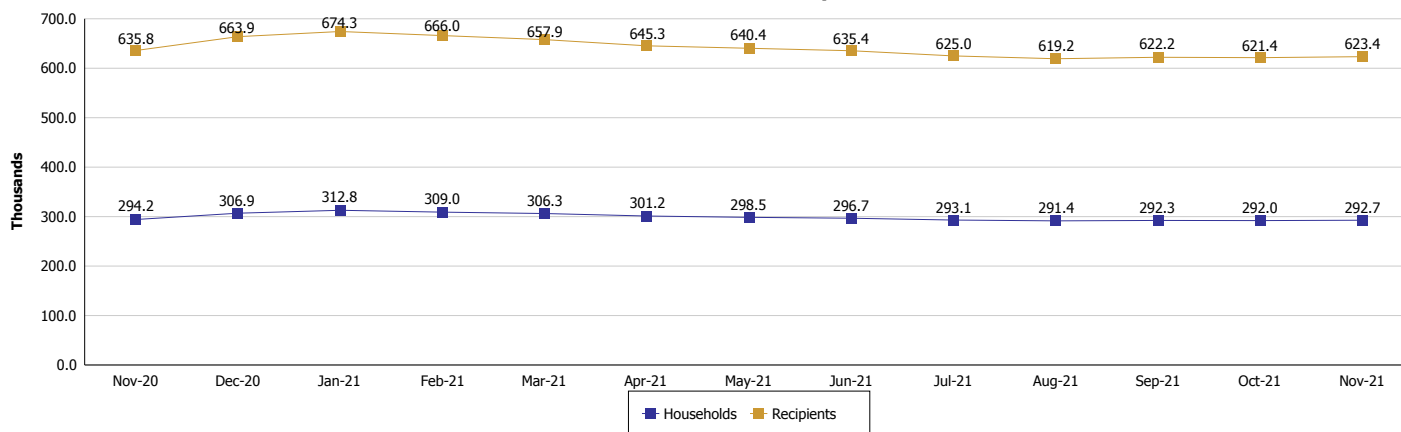
Location: Statewide

### SUPPLEMENTAL NUTRITION ASSISTANCE PROGRAM (SNAP)

#### SNAP Issuance



#### SNAP Households and Recipients



#### Note:

All data July 2014 and following will be broken out according to the new DFR region structure effective July 1 2014.



## DIVISION OF FAMILY RESOURCES

### Monthly Management Report

Reporting Month: November 2021

Location: Statewide

#### HIP 2.0 and SNAP

	November 2021	October 2021	November 2020	Annual Change
Total HIP 2.0 Members	731,249	722,799	600,736	21.73%
HIP Members also SNAP Recipients	185,838	185,780	183,150	1.47%
Percentage HIP Members SNAP Recipients	25.4%	25.7%	30.5%	-5.07
HIP Members SNAP ABAWDs	0	0	0	0%
Percentage HIP Members SNAP ABAWDs	0	0	0	0.0

**Note:**

All data July 2014 and following will be broken out according to the new DFR region structure effective July 1 2014.



## DIVISION OF FAMILY RESOURCES

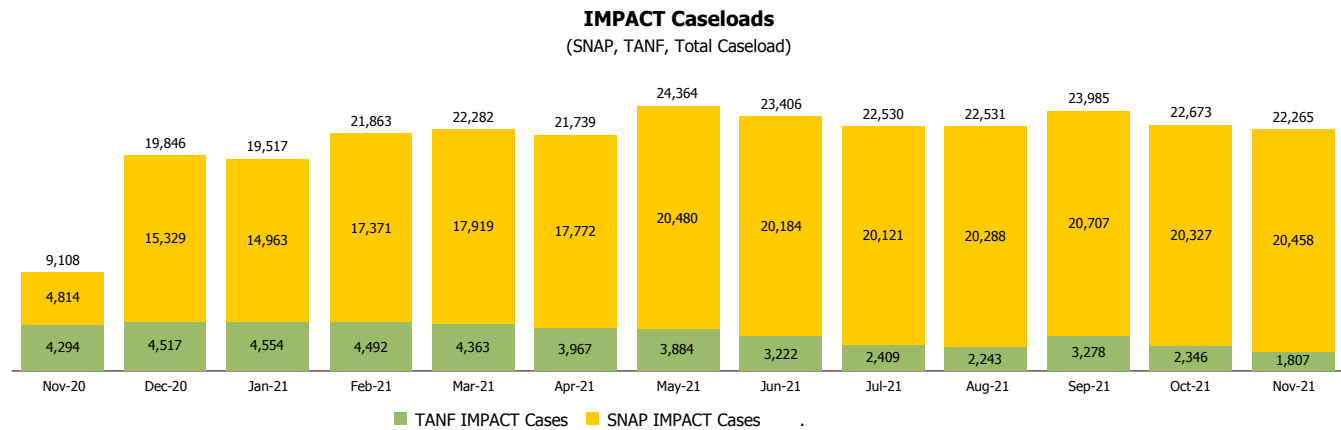
### Monthly Management Report

Reporting Month: November 2021

Location: Statewide

#### INDIANA MANPOWER PLACEMENT AND COMPREHENSIVE TRAINING (IMPACT)

	November 2021	October 2021	November 2020	Annual Change
Number of IMPACT cases	22,265	22,673	9,108	144.46%
Number of TANF IMPACT adults	1,807	2,346	4,294	-57.92%
Number of SNAP IMPACT Cases	20,458	20,327	4,814	324.97%
Total number of adults employed	2,542	2,548	551	361.34%
Number of TANF IMPACT adults newly employed (within past 30 days)	96	118	153	-37.25%
Number of SNAP IMPACT adults employed	2,446	2,430	398	514.57%
Total number of adults ineligible due to employment	2,150	2,235	2,397	-10.30%
Number of TANF adults ineligible due to employment	20	18	48	-58.33%
Number of SNAP adults ineligible due to employment	2,130	2,217	2,349	-9.32%



**Note:**

All data July 2014 and following will be broken out according to the new DFR region structure effective July 1 2014.