



## DIVISION OF FAMILY RESOURCES

# Monthly Management Report May 2021

### State of Indiana

Eric Holcomb  
Governor

### Family and Social Services Administration

Jennifer Sullivan, M.D.  
Secretary

### Division of Family Resources

Adrienne Shields  
Director

For questions regarding data on this report contact:  
[office.Communications@fssa.IN.gov](mailto:office.Communications@fssa.IN.gov)



## State of Indiana

Published June 2021



## DIVISION OF FAMILY RESOURCES

### Monthly Management Report

Reporting Month: May 2021

Location: Statewide

#### TEMPORARY ASSISTANCE FOR NEEDY FAMILIES (TANF)

Child-Only and One-Parent Families	May 31, 2021	April 2021	May 2020	Annual Change
Number of families receiving TANF Grants	6,391	7,019	7,027	-9.05%
Total number of grant recipients	14,147	15,654	15,888	-10.96%
Number of adult grant recipients	2,896	3,233	3,276	-11.60%
Number of child grant recipients	11,251	12,421	12,612	-10.79%
Total payments	\$1,335,105	\$1,470,787	\$1,476,862	-9.60%
Average payment per case	\$208.90	\$209.54	\$210.17	-0.60%
Average payment per recipient	\$94.37	\$93.96	\$92.95	1.53%
Number of cases with benefits reduced to zero	462	482	90	413.33%
Number of recipients with benefits reduced to zero	1,186	1,246	200	493.00%
Number of adult recipients with benefit reduced to zero	330	355	53	522.64%
Number of child recipients with benefit reduced to zero	856	891	147	482.31%

Two-Parent Families	May 31, 2021	April 2021	May 2020	Annual Change
Number of families receiving TANF Grants	1,076	703	543	98.16%
Total number of grant recipients	2,949	2,311	2,094	40.83%
Number of adult grant recipients	854	718	827	3.26%
Number of child grant recipients	2,095	1,593	1,267	65.35%
Total payments	\$254,163	\$185,338	\$157,810	61.06%
Average payment per case	\$236.21	\$263.64	\$290.63	-18.72%
Average payment per recipient	\$86.19	\$80.20	\$75.36	14.36%
Number of cases with benefits reduced to zero	66	55	12	450.00%
Number of recipients with benefits reduced to zero	247	229	49	404.08%
Number of adult recipients with benefit reduced to zero	89	74	20	345.00%
Number of child recipients with benefit reduced to zero	158	155	29	444.83%

**Note:**

All data July 2014 and following will be broken out according to the new DFR region structure effective July 1 2014.

Source:



## DIVISION OF FAMILY RESOURCES

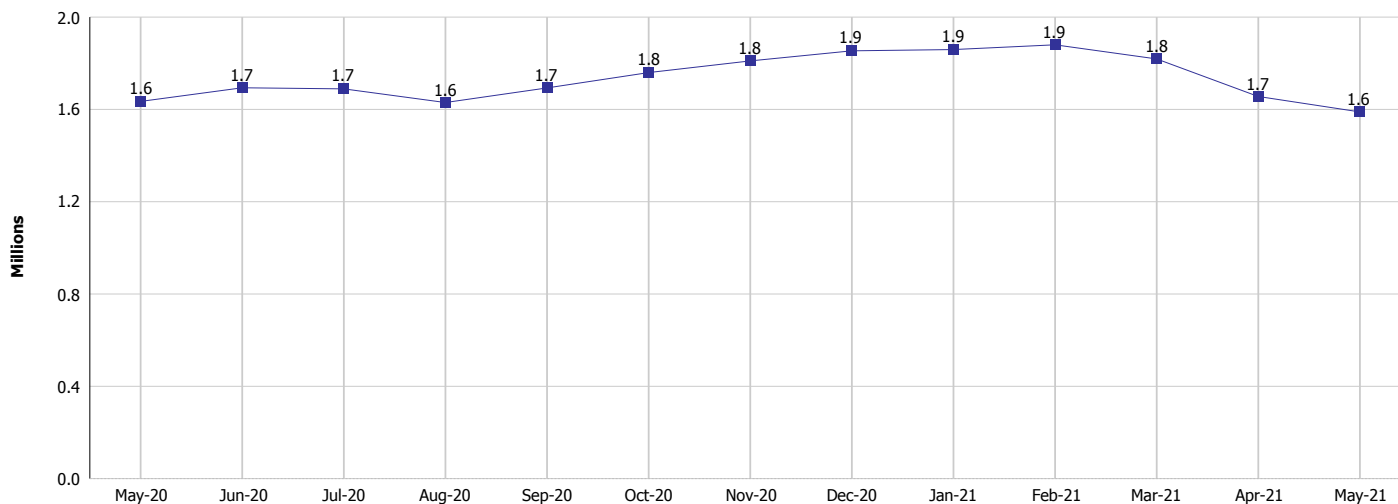
### Monthly Management Report

Reporting Month: May 2021

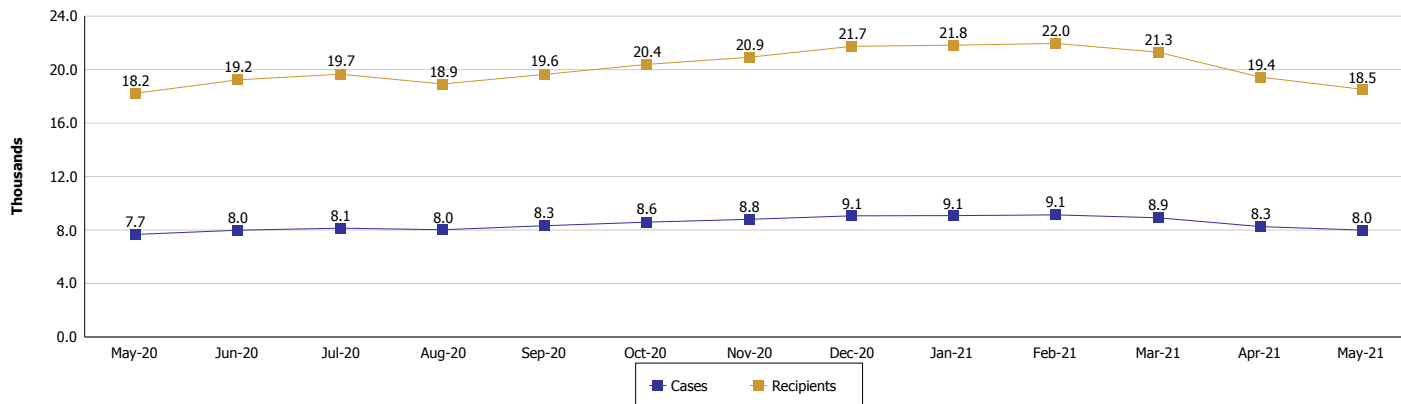
Location: Statewide

#### TEMPORARY ASSISTANCE FOR NEEDY FAMILIES (TANF)

**TANF Cash Assistance**  
(TANF Regular and TANF Two-Parent)



**TANF Cases and Recipients**  
(TANF Regular and TANF Two-Parent)



**Note:**

All data July 2014 and following will be broken out according to the new DFR region structure effective July 1 2014.



## DIVISION OF FAMILY RESOURCES

### Monthly Management Report

Reporting Month: May 2021

Location: Statewide

#### SUPPLEMENTAL NUTRITION ASSISTANCE PROGRAM (SNAP)

	May 2021	April 2021	May 2020	Annual Change
Total issuance	\$147,025,340	\$145,723,961	\$118,583,267	23.98%
Number of households receiving SNAP benefits	298,538	301,214	301,454	-0.97%
Number of recipients	640,367	645,344	661,146	-3.14%
Average issuance per household	\$492.48	\$483.79	\$393.37	25.20%
Average issuance per recipient	\$229.60	\$225.81	\$179.36	28.01%

**Note:**

All data July 2014 and following will be broken out according to the new DFR region structure effective July 1 2014.

#### SNAP ERROR RATES

	Cumulative FFY
FFY Cumulative Positive Error Rate	
Monthly Positive Error Rate	NA
FFY Cumulative Negative Error Rate	
Monthly Negative Error Rate	NA

**Note:**

All data July 2014 and following will be broken out according to the new DFR region structure effective July 1 2014.

**Notes:**

Reporting periods for SNAP Error Rates reflect the review period and Federal submission deadline. The month reported above is the month in which an action was taken included in the review sample.

Positive actions are those which produced an issuance of benefits to a household. Negative actions are those which closed or denied benefits to a household.

Error Rate data is reported by the state before the federal agency has accepted and finalized the results. This rate is subject to revision based upon: completion and submission of outstanding reviews; final review corrections; and completion of previously dropped reviews. Monthly numbers are taken from end-of-month totals. The error status of cases may be changed by the State or Federal Review process, which would cause a change that might not be reflected in the previous monthly numbers.



# DIVISION OF FAMILY RESOURCES

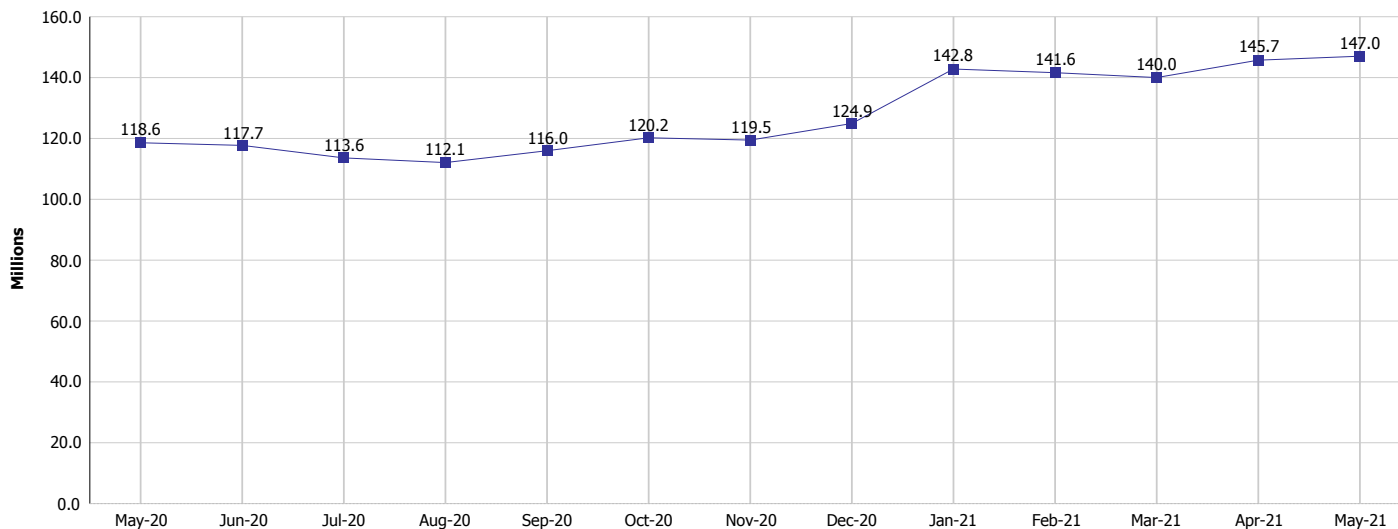
## Monthly Management Report

Reporting Month: May 2021

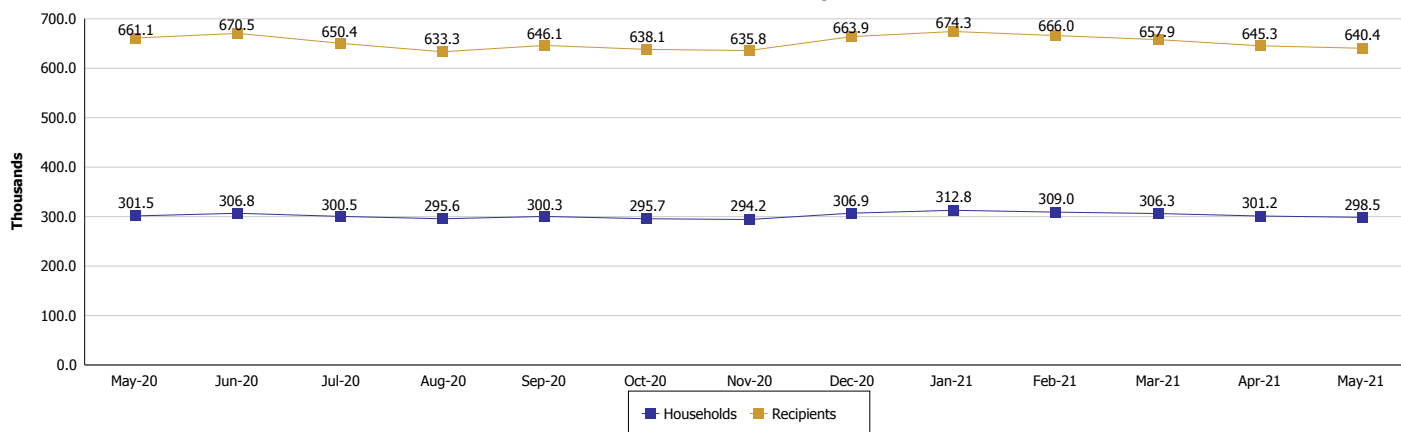
Location: Statewide

### SUPPLEMENTAL NUTRITION ASSISTANCE PROGRAM (SNAP)

#### SNAP Issuance



#### SNAP Households and Recipients



**Note:**

All data July 2014 and following will be broken out according to the new DFR region structure effective July 1 2014.



## DIVISION OF FAMILY RESOURCES

### Monthly Management Report

Reporting Month: May 2021

Location: Statewide

#### HIP 2.0 and SNAP

	May 2021	April 2021	May 2020	Annual Change
Total HIP 2.0 Members	680,115	671,225	490,883	38.55%
HIP Members also SNAP Recipients	190,380	191,428	177,839	7.05%
Percentage HIP Members SNAP Recipients	28.0%	28.5%	36.2%	-8.24
HIP Members SNAP ABAWDs	0	0	7,686	-100.00%
Percentage HIP Members SNAP ABAWDs	0	0	1.6%	-1.6

**Note:**

All data July 2014 and following will be broken out according to the new DFR region structure effective July 1 2014.

Source:



## DIVISION OF FAMILY RESOURCES

### Monthly Management Report

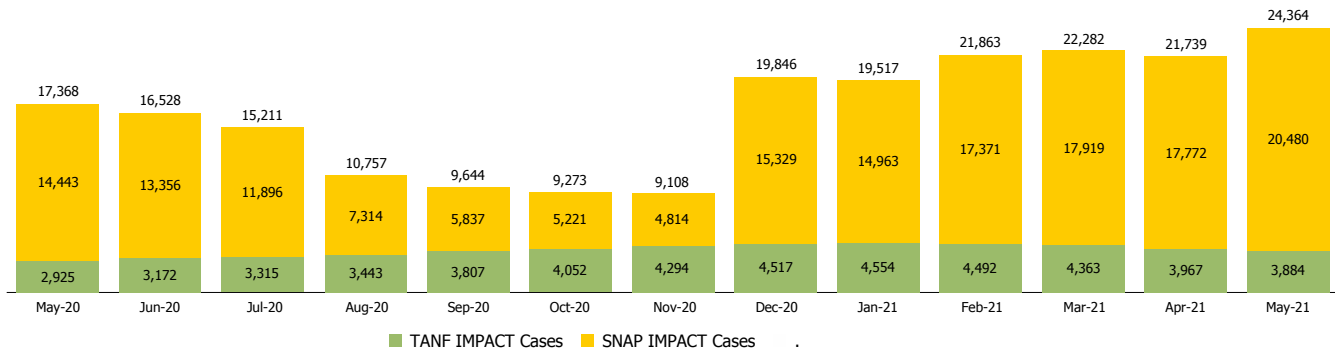
Reporting Month: May 2021

Location: Statewide

#### INDIANA MANPOWER PLACEMENT AND COMPREHENSIVE TRAINING (IMPACT)

	May 2021	April 2021	May 2020	Annual Change
Number of IMPACT cases	24,364	21,739	17,368	40.28%
Number of TANF IMPACT adults	3,884	3,967	2,925	32.79%
Number of SNAP IMPACT Cases	20,480	17,772	14,443	41.80%
Total number of adults employed	2,211	1,820	1,001	120.88%
Number of TANF IMPACT adults newly employed (within past 30 days)	193	151	137	40.88%
Number of SNAP IMPACT adults employed	2,018	1,669	864	133.56%
Total number of adults ineligible due to employment	2,398	3,087	1,707	40.48%
Number of TANF adults ineligible due to employment	39	41	5	680.00%
Number of SNAP adults ineligible due to employment	2,359	3,046	1,702	38.60%

**IMPACT Caseloads**  
(SNAP, TANF, Total Caseload)



**Note:**

All data July 2014 and following will be broken out according to the new DFR region structure effective July 1 2014.