



## DIVISION OF FAMILY RESOURCES

# Monthly Management Report June 2019

### State of Indiana

Eric Holcomb  
Governor

### Family and Social Services Administration

Jennifer Walthall, M.D.  
Secretary

### Division of Family Resources

Adrienne Shields  
Director

For questions regarding data on this report contact:  
[office.Communications@fssa.IN.gov](mailto:office.Communications@fssa.IN.gov)



## State of Indiana

Published July 2019



## DIVISION OF FAMILY RESOURCES

### Monthly Management Report

Reporting Month: June 2019

Location: Statewide

#### TEMPORARY ASSISTANCE FOR NEEDY FAMILIES (TANF)

Child-Only and One-Parent Families	Jun 30, 2019	May 2019	June 2018	Annual Change
Number of families receiving TANF Grants	5,111	5,059	5,837	-12.44%
Total number of grant recipients	10,445	10,399	12,017	-13.08%
Number of adult grant recipients	1,409	1,396	1,616	-12.81%
Number of child grant recipients	9,036	9,003	10,401	-13.12%
Total payments	\$971,434	\$975,515	\$1,122,612	-13.47%
Average payment per case	\$190.07	\$192.83	\$192.33	-1.17%
Average payment per recipient	\$93.00	\$93.81	\$93.42	-0.44%
Number of cases with benefits reduced to zero	66	59	87	-24.14%
Number of recipients with benefits reduced to zero	137	137	204	-32.84%
Number of adult recipients with benefit reduced to zero	31	32	48	-35.42%
Number of child recipients with benefit reduced to zero	106	105	156	-32.05%

Two-Parent Families	Jun 30, 2019	May 2019	June 2018	Annual Change
Number of families receiving TANF Grants	220	226	234	-5.98%
Total number of grant recipients	814	838	921	-11.62%
Number of adult grant recipients	297	311	319	-6.90%
Number of child grant recipients	517	527	602	-14.12%
Total payments	\$45,845	\$49,704	\$48,723	-5.91%
Average payment per case	\$208.39	\$219.93	\$208.22	0.08%
Average payment per recipient	\$56.32	\$59.31	\$52.90	6.46%
Number of cases with benefits reduced to zero	5	6	5	0.00%
Number of recipients with benefits reduced to zero	26	29	15	73.33%
Number of adult recipients with benefit reduced to zero	9	11	6	50.00%
Number of child recipients with benefit reduced to zero	17	18	9	88.89%

**Note:**

All data July 2014 and following will be broken out according to the new DFR region structure effective July 1 2014.

Source:



## DIVISION OF FAMILY RESOURCES

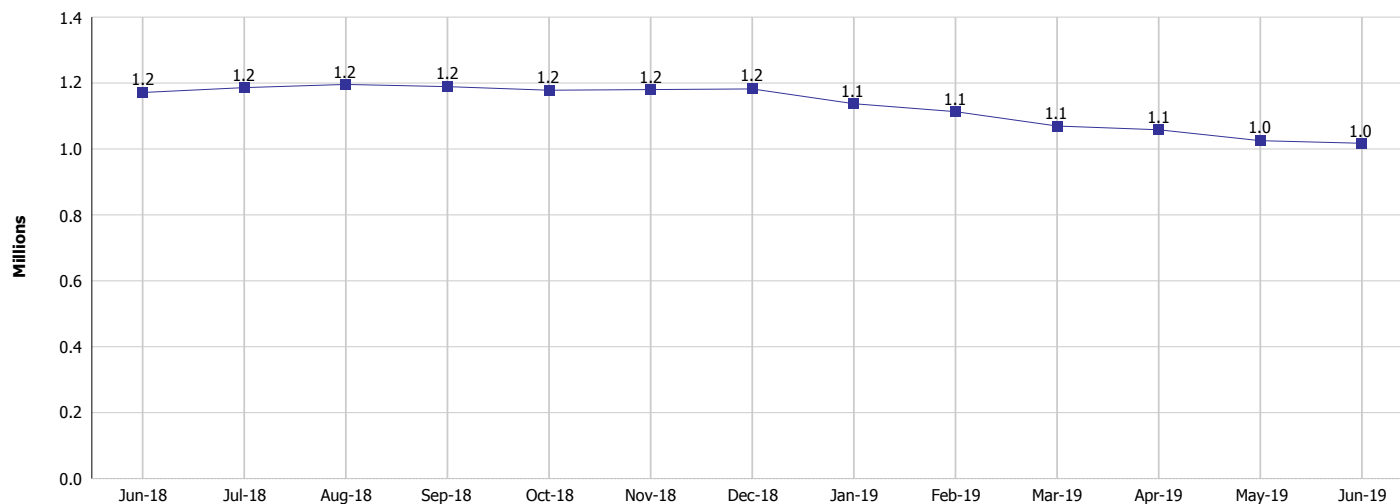
### Monthly Management Report

Reporting Month: June 2019

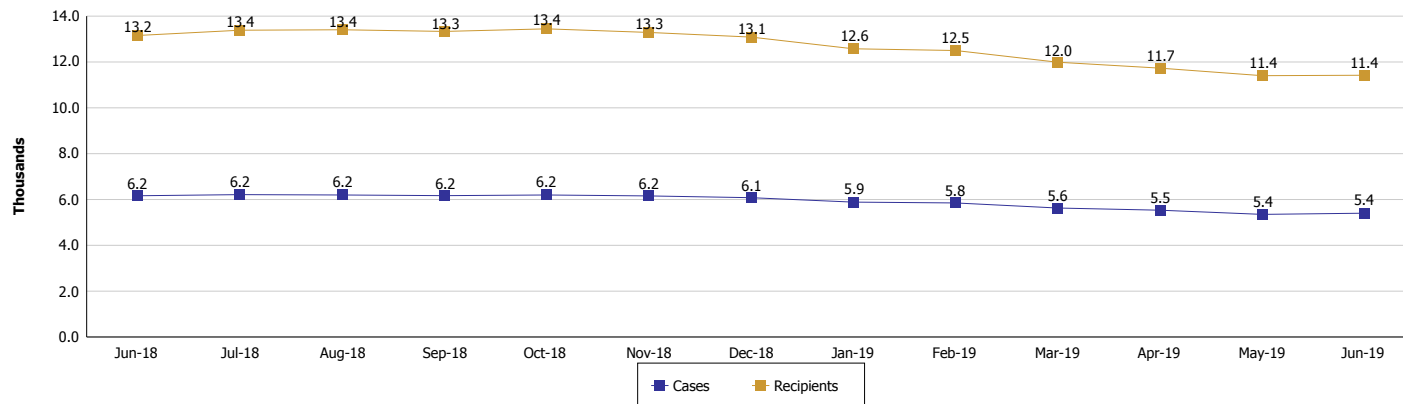
Location: Statewide

#### TEMPORARY ASSISTANCE FOR NEEDY FAMILIES (TANF)

**TANF Cash Assistance**  
(TANF Regular and TANF Two-Parent)



**TANF Cases and Recipients**  
(TANF Regular and TANF Two-Parent)



**Note:**

All data July 2014 and following will be broken out according to the new DFR region structure effective July 1 2014.



## DIVISION OF FAMILY RESOURCES

### Monthly Management Report

Reporting Month: June 2019

Location: Statewide

#### SUPPLEMENTAL NUTRITION ASSISTANCE PROGRAM (SNAP)

	June 2019	May 2019	June 2018	Annual Change
Total issuance	\$65,128,308	\$69,436,986	\$70,623,198	-7.78%
Number of households receiving SNAP benefits	247,651	267,253	268,089	-7.62%
Number of recipients	552,203	590,668	601,062	-8.13%
Average issuance per household	\$262.98	\$259.82	\$263.43	-0.17%
Average issuance per recipient	\$117.94	\$117.56	\$117.50	0.38%

**Note:**

All data July 2014 and following will be broken out according to the new DFR region structure effective July 1 2014.

#### SNAP ERROR RATES

	February 2019	January 2019	December 2018	Cumulative FFY 2018
FFY Cumulative Positive Error Rate	8.51%	8.63%	9.95%	6.10%
Monthly Positive Error Rate	3.96%	5.09%	7.11%	NA
FFY Cumulative Negative Error Rate	40.61%	37.96%	34.74%	39.94%
Monthly Negative Error Rate	54.17%	49.09%	31.03%	NA

**Note:**

All data July 2014 and following will be broken out according to the new DFR region structure effective July 1 2014.

**Notes:**

Reporting periods for SNAP Error Rates reflect the review period and Federal submission deadline. The month reported above is the month in which an action was taken included in the review sample.

Positive actions are those which produced an issuance of benefits to a household. Negative actions are those which closed or denied benefits to a household.

Error Rate data is reported by the state before the federal agency has accepted and finalized the results. This rate is subject to revision based upon: completion and submission of outstanding reviews; final review corrections; and completion of previously dropped reviews. Monthly numbers are taken from end-of-month totals. The error status of cases may be changed by the State or Federal Review process, which would cause a change that might not be reflected in the previous monthly numbers.



# DIVISION OF FAMILY RESOURCES

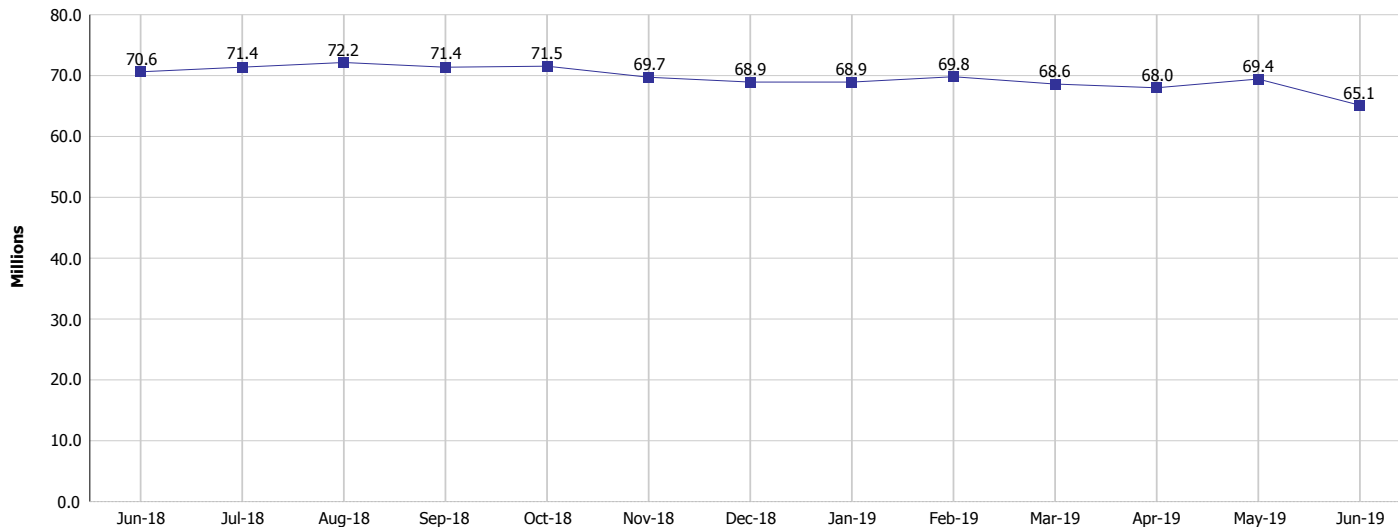
## Monthly Management Report

Reporting Month: June 2019

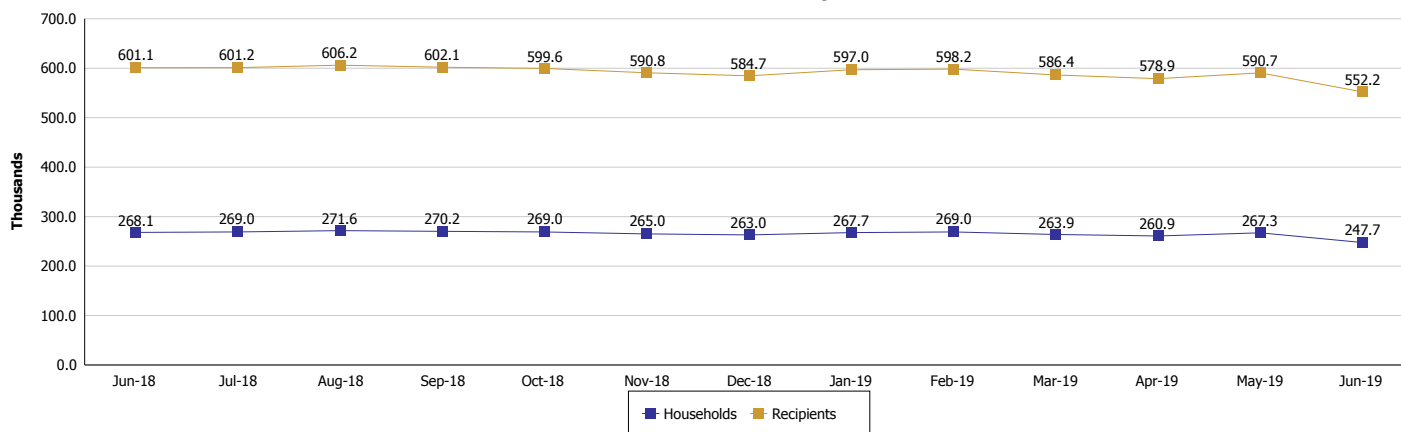
Location: Statewide

### SUPPLEMENTAL NUTRITION ASSISTANCE PROGRAM (SNAP)

#### SNAP Issuance



#### SNAP Households and Recipients



**Note:**

All data July 2014 and following will be broken out according to the new DFR region structure effective July 1 2014.



## DIVISION OF FAMILY RESOURCES

### Monthly Management Report

Reporting Month: June 2019

Location: Statewide

#### HIP 2.0 and SNAP

	June 2019	May 2019	June 2018	Annual Change
Total HIP 2.0 Members	427,799	431,625	429,860	-0.48%
HIP Members also SNAP Recipients	139,873	141,678	142,709	-1.99%
Percentage HIP Members SNAP Recipients	32.7%	32.8%	33.2%	-0.74%
HIP Members SNAP ABAWDs	3,969	4,285	3,353	18.37%
Percentage HIP Members SNAP ABAWDs	0.9%	1.0%	0.8%	-0.74%

**Note:**

All data July 2014 and following will be broken out according to the new DFR region structure effective July 1 2014.



## DIVISION OF FAMILY RESOURCES

### Monthly Management Report

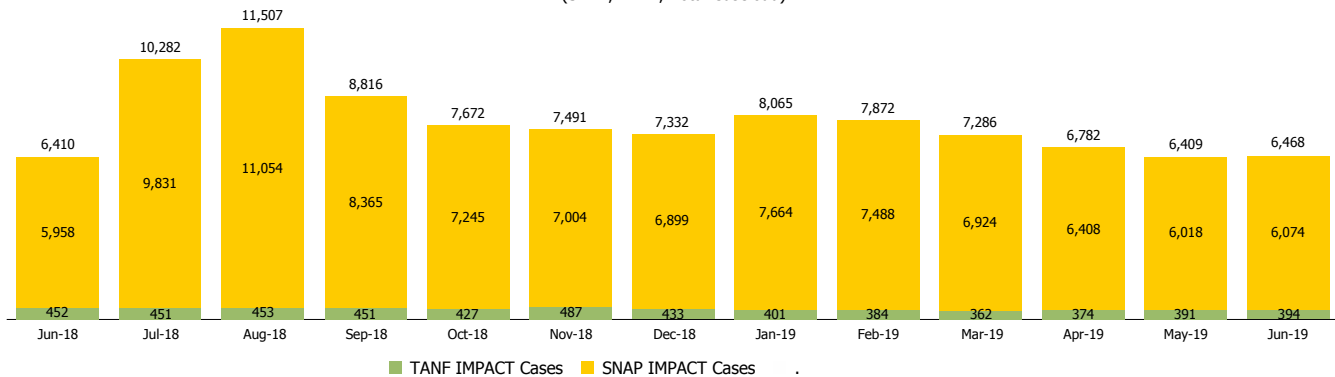
Reporting Month: June 2019

Location: Statewide

#### INDIANA MANPOWER PLACEMENT AND COMPREHENSIVE TRAINING (IMPACT)

	June 2019	May 2019	June 2018	Annual Change
Number of IMPACT cases	6,468	6,409	6,410	0.90%
Number of TANF IMPACT adults	394	391	452	-12.83%
Number of SNAP IMPACT Cases	6,074	6,018	5,958	1.95%
Total number of adults employed	1,030	1,149	1,084	-4.98%
Number of TANF IMPACT adults newly employed (within past 30 days)	69	83	97	-28.87%
Number of SNAP IMPACT adults employed	961	1,066	987	-2.63%
Total number of adults ineligible due to employment	4,800	5,218	6,006	-20.08%
Number of TANF adults ineligible due to employment	6	18	13	-53.85%
Number of SNAP adults ineligible due to employment	4,794	5,200	5,993	-20.01%

**IMPACT Caseloads**  
(SNAP, TANF, Total Caseload)



**Note:**

All data July 2014 and following will be broken out according to the new DFR region structure effective July 1 2014.