



DIVISION OF FAMILY RESOURCES

Monthly Management Report February 2021

State of Indiana

Eric Holcomb
Governor

Family and Social Services Administration

Jennifer Sullivan, M.D.
Secretary

Division of Family Resources

Adrienne Shields
Director

For questions regarding data on this report contact:
office.Communications@fssa.IN.gov



State of Indiana

Published March 2021



DIVISION OF FAMILY RESOURCES

Monthly Management Report

Reporting Month: February 2021

Location: Statewide

TEMPORARY ASSISTANCE FOR NEEDY FAMILIES (TANF)

Child-Only and One-Parent Families	Feb 28, 2021	January 2021	February 2020	Annual Change
Number of families receiving TANF Grants	7,868	7,816	5,124	53.55%
Total number of grant recipients	18,021	17,900	10,599	70.03%
Number of adult grant recipients	3,846	3,792	1,373	180.12%
Number of child grant recipients	14,175	14,108	9,226	53.64%
Total payments	\$1,664,239	\$1,646,696	\$984,452	69.05%
Average payment per case	\$211.52	\$210.68	\$192.13	10.09%
Average payment per recipient	\$92.35	\$91.99	\$92.88	-0.57%
Number of cases with benefits reduced to zero	418	416	60	596.67%
Number of recipients with benefits reduced to zero	1,052	1,058	133	690.98%
Number of adult recipients with benefit reduced to zero	300	297	28	971.43%
Number of child recipients with benefit reduced to zero	752	761	105	616.19%

Two-Parent Families	Feb 28, 2021	January 2021	February 2020	Annual Change
Number of families receiving TANF Grants	800	795	216	270.37%
Total number of grant recipients	2,703	2,667	796	239.57%
Number of adult grant recipients	875	867	269	225.28%
Number of child grant recipients	1,828	1,800	527	246.87%
Total payments	\$215,741	\$212,757	\$50,249	329.34%
Average payment per case	\$269.68	\$267.62	\$232.63	15.92%
Average payment per recipient	\$79.82	\$79.77	\$63.13	26.44%
Number of cases with benefits reduced to zero	48	53	6	700.00%
Number of recipients with benefits reduced to zero	183	204	26	603.85%
Number of adult recipients with benefit reduced to zero	68	80	10	580.00%
Number of child recipients with benefit reduced to zero	115	124	16	618.75%

Note:

All data July 2014 and following will be broken out according to the new DFR region structure effective July 1 2014.

Source:



DIVISION OF FAMILY RESOURCES

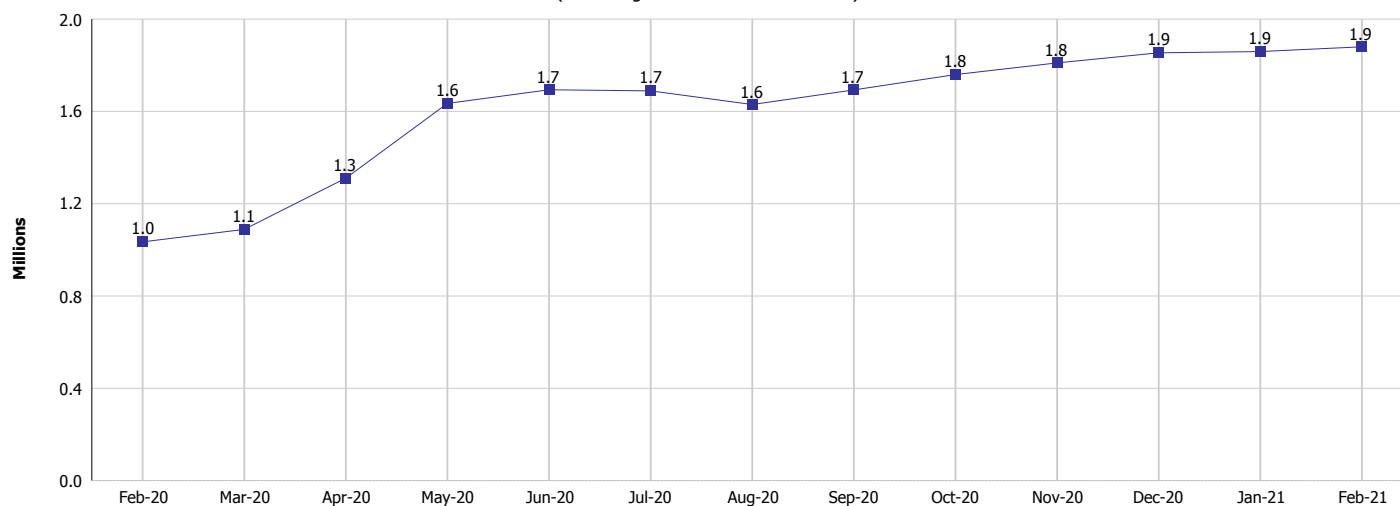
Monthly Management Report

Reporting Month: February 2021

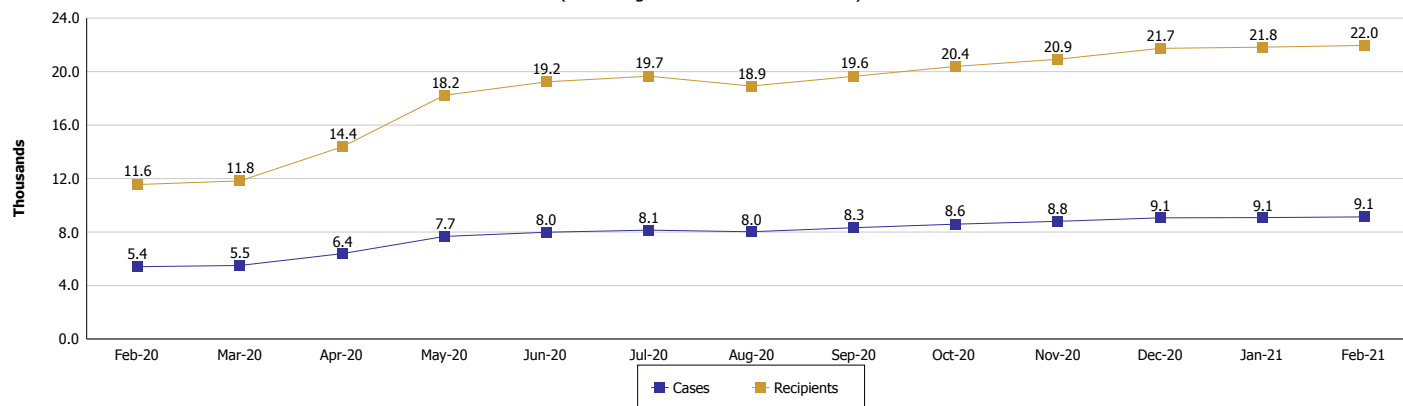
Location: Statewide

TEMPORARY ASSISTANCE FOR NEEDY FAMILIES (TANF)

TANF Cash Assistance
(TANF Regular and TANF Two-Parent)



TANF Cases and Recipients
(TANF Regular and TANF Two-Parent)



Note:

All data July 2014 and following will be broken out according to the new DFR region structure effective July 1 2014.

Monthly Management Report

Reporting Month: February 2021 Location: Statewide

SUPPLEMENTAL NUTRITION ASSISTANCE PROGRAM (SNAP)

	February 2021	January 2021	February 2020	Annual Change
Total issuance	\$141,613,322	\$142,817,607	\$67,532,546	109.70%
Number of households receiving SNAP benefits	309,046	312,811	255,786	20.82%
Number of recipients	666,041	674,297	564,492	17.99%
Average issuance per household	\$458.23	\$456.56	\$264.02	73.56%
Average issuance per recipient	\$212.62	\$211.80	\$119.63	77.72%

Note:
All data July 2014 and following will be broken out according to the new DFR region structure effective July 1 2014.

SNAP ERROR RATES

	Cumulative FFY
FFY Cumulative Positive Error Rate	
Monthly Positive Error Rate	NA
FFY Cumulative Negative Error Rate	
Monthly Negative Error Rate	NA

Note:
All data July 2014 and following will be broken out according to the new DFR region structure effective July 1 2014.

Notes:
Reporting periods for SNAP Error Rates reflect the review period and Federal submission deadline. The month reported above is the month in which an action was taken included in the review sample.
Positive actions are those which produced an issuance of benefits to a household. Negative actions are those which closed or denied benefits to a household.
Error Rate data is reported by the state before the federal agency has accepted and finalized the results. This rate is subject to revision based upon: completion and submission of outstanding reviews; final review corrections; and completion of previously dropped reviews. Monthly numbers are taken from end-of-month totals. The error status of cases may be changed by the State or Federal Review process, which would cause a change that might not be reflected in the previous monthly numbers.



DIVISION OF FAMILY RESOURCES

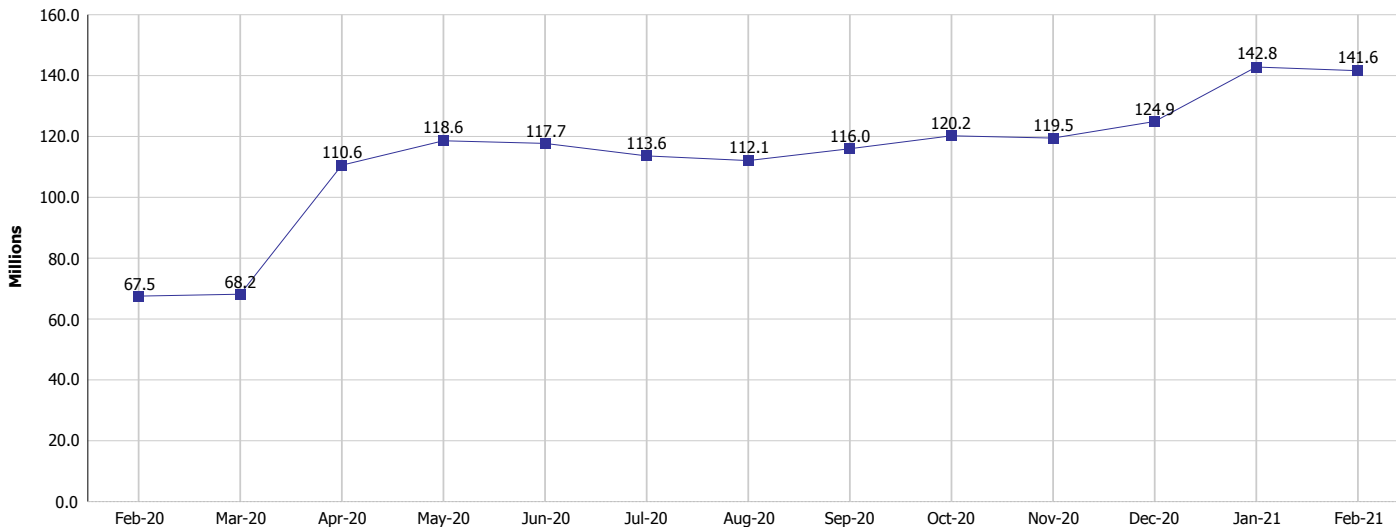
Monthly Management Report

Reporting Month: February 2021

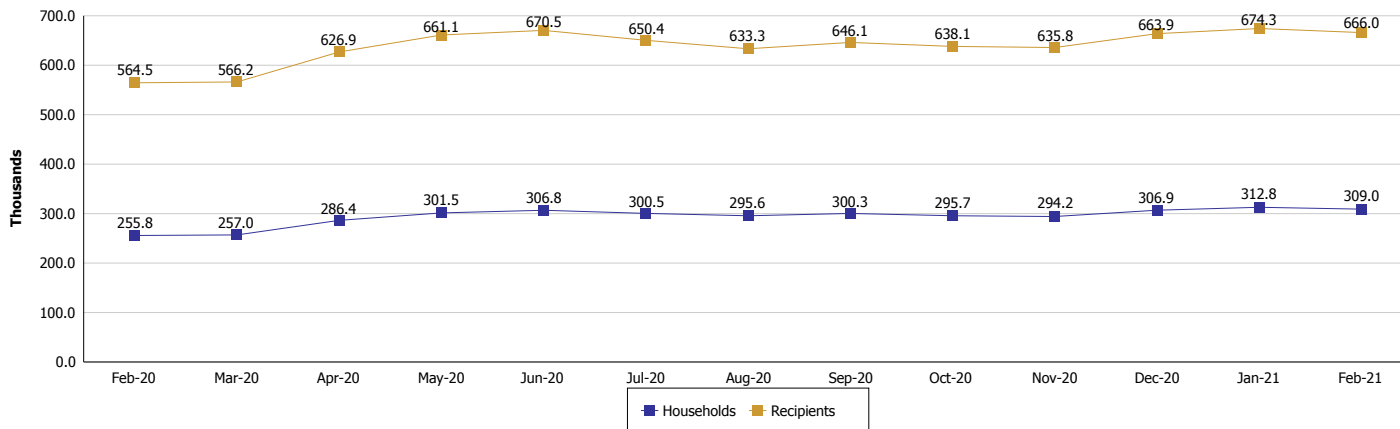
Location: Statewide

SUPPLEMENTAL NUTRITION ASSISTANCE PROGRAM (SNAP)

SNAP Issuance



SNAP Households and Recipients



Note:

All data July 2014 and following will be broken out according to the new DFR region structure effective July 1 2014.



DIVISION OF FAMILY RESOURCES

Monthly Management Report

Reporting Month: February 2021

Location: Statewide

HIP 2.0 and SNAP

	February 2021	January 2021	February 2020	Annual Change
Total HIP 2.0 Members	648,638	636,641	446,811	45.17%
HIP Members also SNAP Recipients	198,228	198,415	142,241	39.36%
Percentage HIP Members SNAP Recipients	30.6%	31.2%	31.8%	-1.27
HIP Members SNAP ABAWDs	0	0	3,085	-100.00%
Percentage HIP Members SNAP ABAWDs	0	0	0.7%	-0.7

Note:

All data July 2014 and following will be broken out according to the new DFR region structure effective July 1 2014.



DIVISION OF FAMILY RESOURCES

Monthly Management Report

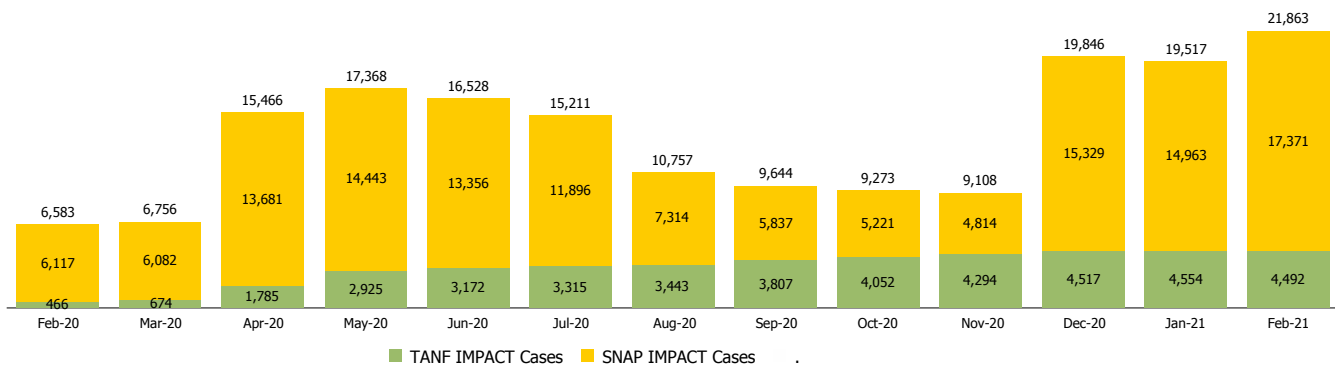
Reporting Month: February 2021

Location: Statewide

INDIANA MANPOWER PLACEMENT AND COMPREHENSIVE TRAINING (IMPACT)

	February 2021	January 2021	February 2020	Annual Change
Number of IMPACT cases	21,863	19,517	6,583	232.11%
Number of TANF IMPACT adults	4,492	4,554	466	863.95%
Number of SNAP IMPACT Cases	17,371	14,963	6,117	183.98%
Total number of adults employed	1,990	1,853	744	167.47%
Number of TANF IMPACT adults newly employed (within past 30 days)	158	159	58	172.41%
Number of SNAP IMPACT adults employed	1,832	1,694	686	167.06%
Total number of adults ineligible due to employment	3,623	3,413	3,606	0.47%
Number of TANF adults ineligible due to employment	42	59	16	162.50%
Number of SNAP adults ineligible due to employment	3,581	3,354	3,590	-0.25%

IMPACT Caseloads
(SNAP, TANF, Total Caseload)



Note:

All data July 2014 and following will be broken out according to the new DFR region structure effective July 1 2014.