



## DIVISION OF FAMILY RESOURCES

# Monthly Management Report December 2019

### State of Indiana

Eric Holcomb  
Governor

### Family and Social Services Administration

Jennifer Walthall, M.D.  
Secretary

### Division of Family Resources

Adrienne Shields  
Director

For questions regarding data on this report contact:  
[office.Communications@fssa.IN.gov](mailto:office.Communications@fssa.IN.gov)



## State of Indiana

Published January 2020



## DIVISION OF FAMILY RESOURCES

### Monthly Management Report

Reporting Month: December 2019

Location: Statewide

#### TEMPORARY ASSISTANCE FOR NEEDY FAMILIES (TANF)

Child-Only and One-Parent Families	Dec 31, 2019	November 2019	December 2018	Annual Change
Number of families receiving TANF Grants	5,179	5,231	5,781	-10.41%
Total number of grant recipients	10,827	10,913	12,065	-10.26%
Number of adult grant recipients	1,456	1,493	1,687	-13.69%
Number of child grant recipients	9,371	9,420	10,378	-9.70%
Total payments	\$1,012,274	\$1,032,949	\$1,133,263	-10.68%
Average payment per case	\$195.46	\$197.47	\$196.03	-0.29%
Average payment per recipient	\$93.50	\$94.65	\$93.93	-0.46%
Number of cases with benefits reduced to zero	80	78	70	14.29%
Number of recipients with benefits reduced to zero	158	164	141	12.06%
Number of adult recipients with benefit reduced to zero	36	36	33	9.09%
Number of child recipients with benefit reduced to zero	122	128	108	12.96%

Two-Parent Families	Dec 31, 2019	November 2019	December 2018	Annual Change
Number of families receiving TANF Grants	232	217	224	3.57%
Total number of grant recipients	856	803	863	-0.81%
Number of adult grant recipients	306	284	302	1.32%
Number of child grant recipients	550	519	561	-1.96%
Total payments	\$51,831	\$51,088	\$48,888	6.02%
Average payment per case	\$223.41	\$235.43	\$218.25	2.36%
Average payment per recipient	\$60.55	\$63.62	\$56.65	6.89%
Number of cases with benefits reduced to zero	4	6	4	0.00%
Number of recipients with benefits reduced to zero	21	25	18	16.67%
Number of adult recipients with benefit reduced to zero	7	10	6	16.67%
Number of child recipients with benefit reduced to zero	14	15	12	16.67%

**Note:**

All data July 2014 and following will be broken out according to the new DFR region structure effective July 1 2014.

Source:



## DIVISION OF FAMILY RESOURCES

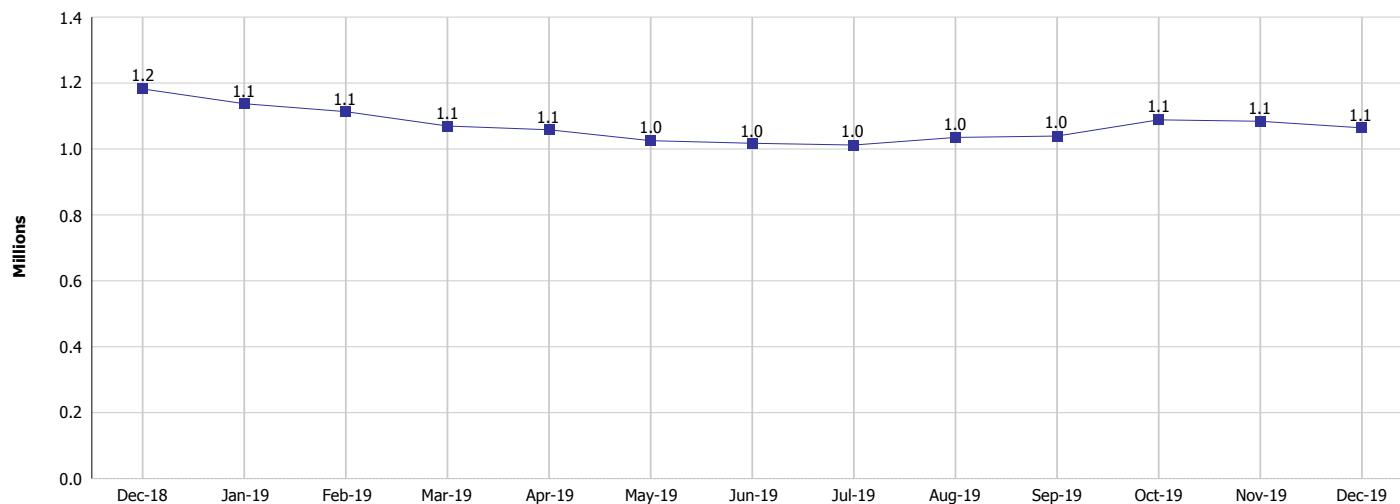
### Monthly Management Report

Reporting Month: December 2019

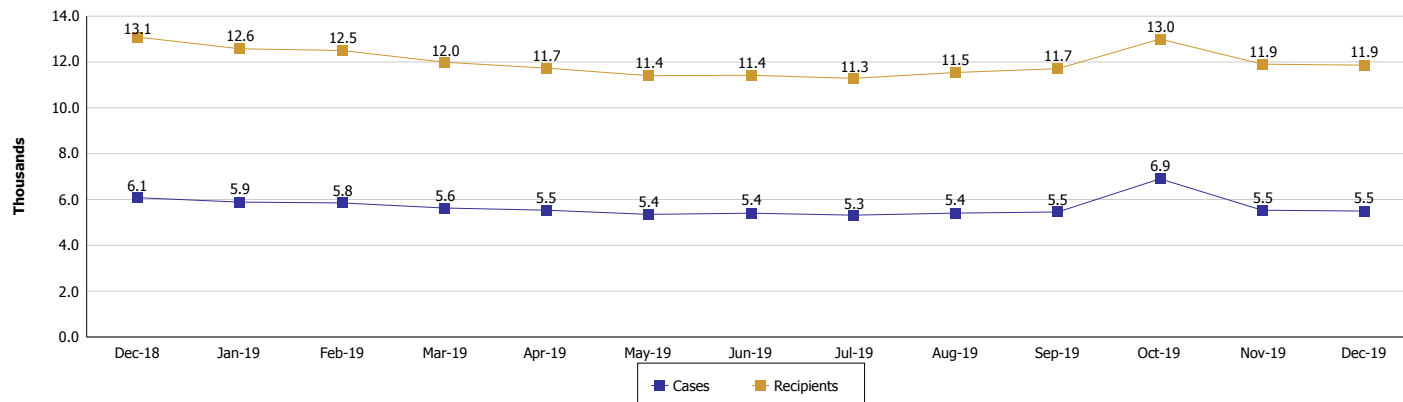
Location: Statewide

#### TEMPORARY ASSISTANCE FOR NEEDY FAMILIES (TANF)

**TANF Cash Assistance**  
(TANF Regular and TANF Two-Parent)



**TANF Cases and Recipients**  
(TANF Regular and TANF Two-Parent)



**Note:**

All data July 2014 and following will be broken out according to the new DFR region structure effective July 1 2014.



## DIVISION OF FAMILY RESOURCES

### Monthly Management Report

Reporting Month: December 2019

Location: Statewide

#### SUPPLEMENTAL NUTRITION ASSISTANCE PROGRAM (SNAP)

	December 2019	November 2019	December 2018	Annual Change
Total issuance	\$68,107,744	\$68,947,729	\$68,935,862	-1.20%
Number of households receiving SNAP benefits	253,126	257,844	263,004	-3.76%
Number of recipients	561,830	573,278	584,699	-3.91%
Average issuance per household	\$269.07	\$267.40	\$262.11	2.65%
Average issuance per recipient	\$121.22	\$120.27	\$117.90	2.82%

**Note:**

All data July 2014 and following will be broken out according to the new DFR region structure effective July 1 2014.

#### SNAP ERROR RATES

	August 2019	July 2019	June 2019	Cumulative FFY 2018
FFY Cumulative Positive Error Rate	8.22%	7.88%	8.41%	6.10%
Monthly Positive Error Rate	11.09%	3.56%	3.70%	NA
FFY Cumulative Negative Error Rate	41.46%	40.63%	40.86%	39.94%
Monthly Negative Error Rate	49.18%	38.60%	43.40%	NA

**Note:**

All data July 2014 and following will be broken out according to the new DFR region structure effective July 1 2014.

**Notes:**

Reporting periods for SNAP Error Rates reflect the review period and Federal submission deadline. The month reported above is the month in which an action was taken included in the review sample.

Positive actions are those which produced an issuance of benefits to a household. Negative actions are those which closed or denied benefits to a household.

Error Rate data is reported by the state before the federal agency has accepted and finalized the results. This rate is subject to revision based upon: completion and submission of outstanding reviews; final review corrections; and completion of previously dropped reviews. Monthly numbers are taken from end-of-month totals. The error status of cases may be changed by the State or Federal Review process, which would cause a change that might not be reflected in the previous monthly numbers.



# DIVISION OF FAMILY RESOURCES

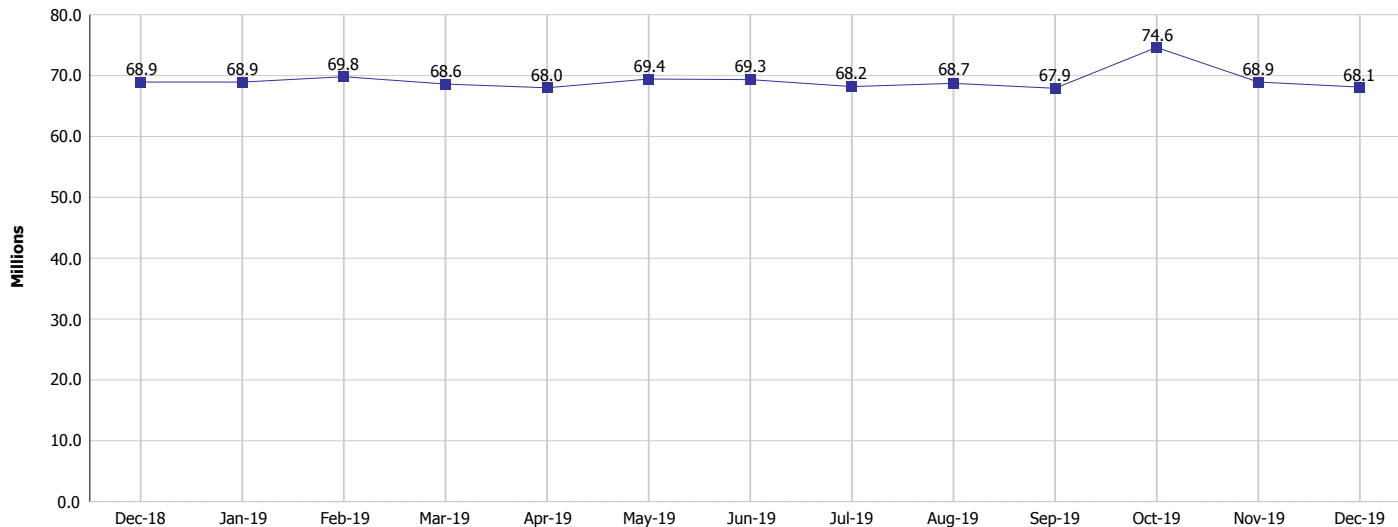
## Monthly Management Report

Reporting Month: December 2019

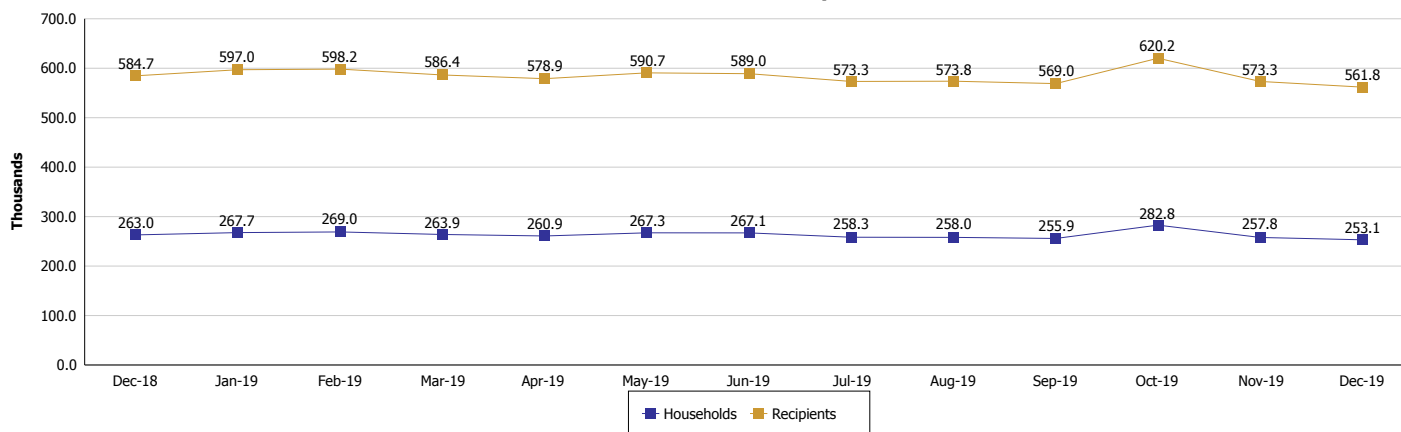
Location: Statewide

### SUPPLEMENTAL NUTRITION ASSISTANCE PROGRAM (SNAP)

#### SNAP Issuance



#### SNAP Households and Recipients



**Note:**

All data July 2014 and following will be broken out according to the new DFR region structure effective July 1 2014.



## DIVISION OF FAMILY RESOURCES

### Monthly Management Report

Reporting Month: December 2019

Location: Statewide

#### HIP 2.0 and SNAP

	December 2019	November 2019	December 2018	Annual Change
Total HIP 2.0 Members	433,159	432,536	424,087	2.14%
HIP Members also SNAP Recipients	138,447	139,352	141,061	-1.85%
Percentage HIP Members SNAP Recipients	32.0%	32.2%	33.3%	0.81%
HIP Members SNAP ABAWDs	3,107	3,407	4,961	-37.37%
Percentage HIP Members SNAP ABAWDs	0.7%	0.8%	1.2%	0.81%

**Note:**

All data July 2014 and following will be broken out according to the new DFR region structure effective July 1 2014.



## DIVISION OF FAMILY RESOURCES

### Monthly Management Report

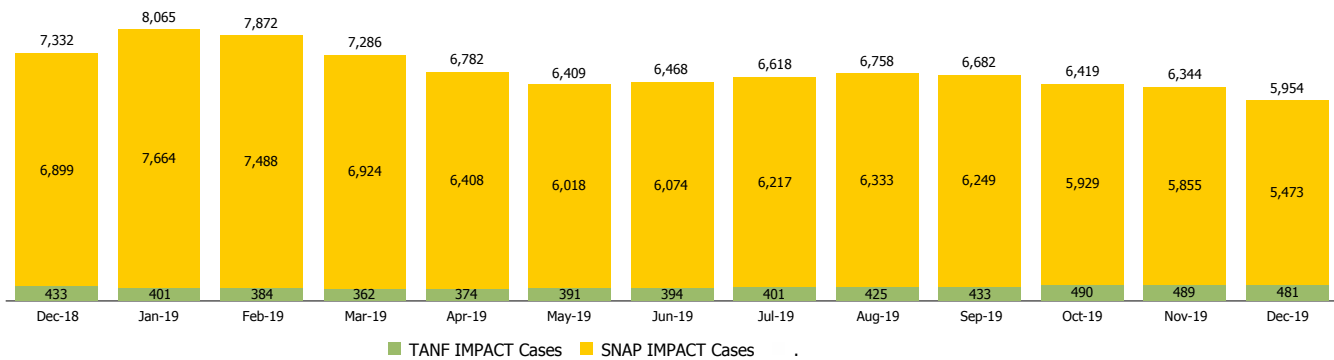
Reporting Month: December 2019

Location: Statewide

#### INDIANA MANPOWER PLACEMENT AND COMPREHENSIVE TRAINING (IMPACT)

	December 2019	November 2019	December 2018	Annual Change
Number of IMPACT cases	5,954	6,344	7,332	-18.79%
Number of TANF IMPACT adults	481	489	433	11.09%
Number of SNAP IMPACT Cases	5,473	5,855	6,899	-20.67%
Total number of adults employed	732	901	997	-26.58%
Number of TANF IMPACT adults newly employed (within past 30 days)	77	79	69	11.59%
Number of SNAP IMPACT adults employed	655	822	928	-29.42%
Total number of adults ineligible due to employment	4,194	4,550	5,816	-27.89%
Number of TANF adults ineligible due to employment	11	15	10	10.00%
Number of SNAP adults ineligible due to employment	4,183	4,535	5,806	-27.95%

**IMPACT Caseloads**  
(SNAP, TANF, Total Caseload)



**Note:**

All data July 2014 and following will be broken out according to the new DFR region structure effective July 1 2014.