



DIVISION OF FAMILY RESOURCES

Statewide Monthly Management Report December 2022

State of Indiana

Eric Holcomb
Governor

Family and Social Services Administration

Dan Rusyniak, MD
Secretary

Division of Family Resources

Adrienne Shields
Director

For questions regarding data on this report contact:
office.Communications@fssa.IN.gov



State of Indiana

Published January 2023



DIVISION OF FAMILY RESOURCES

Monthly Management Report

Reporting Month: December 2022

Location: Statewide

TEMPORARY ASSISTANCE FOR NEEDY FAMILIES (TANF)

Child-Only and One-Parent Families	December 2022	November 2022	December 2021	Annual Change
Number of families receiving TANF Grants	3,836	3,865	4,687	-18.16%
Total number of grant recipients	7,676	7,716	9,753	-21.30%
Number of adult grant recipients	827	818	1,309	-36.82%
Number of child grant recipients	6,849	6,898	8,444	-18.89%
Total payments	\$750,268	\$755,809	\$940,964	-20.27%
Average payment per case	\$195.59	\$195.55	\$200.76	-2.58%
Average payment per recipient	\$97.74	\$97.95	\$96.48	1.31%
Number of cases with benefits reduced to zero	102	94	158	-35.44%
Number of recipients with benefits reduced to zero	198	181	338	-41.42%
Number of adult recipients with benefit reduced to zero	32	29	74	-56.76%
Number of child recipients with benefit reduced to zero	166	152	264	-37.12%

Two-Parent Families	December 2022	November 2022	December 2021	Annual Change
Number of families receiving TANF Grants	507	447	281	80.43%
Total number of grant recipients	1,787	1,606	904	97.68%
Number of adult grant recipients	759	678	295	157.29%
Number of child grant recipients	1,028	928	609	68.80%
Total payments	\$150,931	\$135,681	\$77,772	94.07%
Average payment per case	\$297.69	\$303.54	\$276.77	7.56%
Average payment per recipient	\$84.46	\$84.48	\$86.03	-1.83%
Number of cases with benefits reduced to zero	2	1	2	0.00%
Number of recipients with benefits reduced to zero	9	4	8	12.50%
Number of adult recipients with benefit reduced to zero	4	2	4	0.00%
Number of child recipients with benefit reduced to zero	5	2	4	25.00%

Note:

For August 2021, a one time payment of \$400 per recipient was included in the Total payments and Average payments. TANF section rules changed to reflect Federal reporting logic effective September 2021. For August 2022, a one-time payment of \$269 per recipient was included in the Total payments and Average payments.

Source:



DIVISION OF FAMILY RESOURCES

Monthly Management Report

Reporting Month: December 2022

Location: Statewide

TANF - APPLICATIONS

	December 2022	November 2022	December 2021	Annual Change
Number of Applications	3,493	3,216	2,914	19.87%



DIVISION OF FAMILY RESOURCES

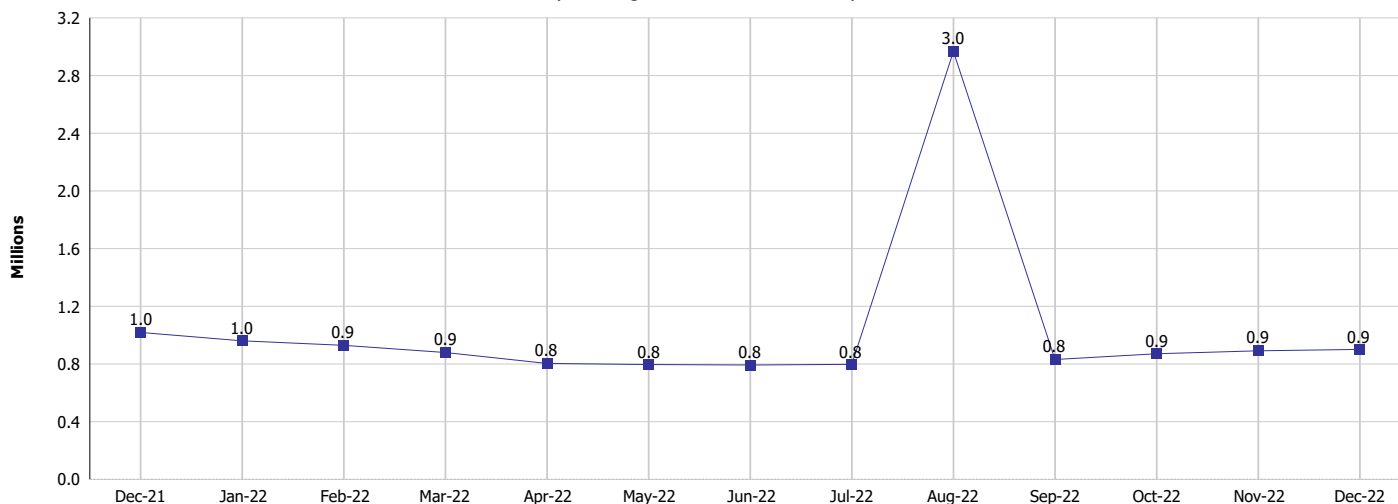
Monthly Management Report

Reporting Month: December 2022

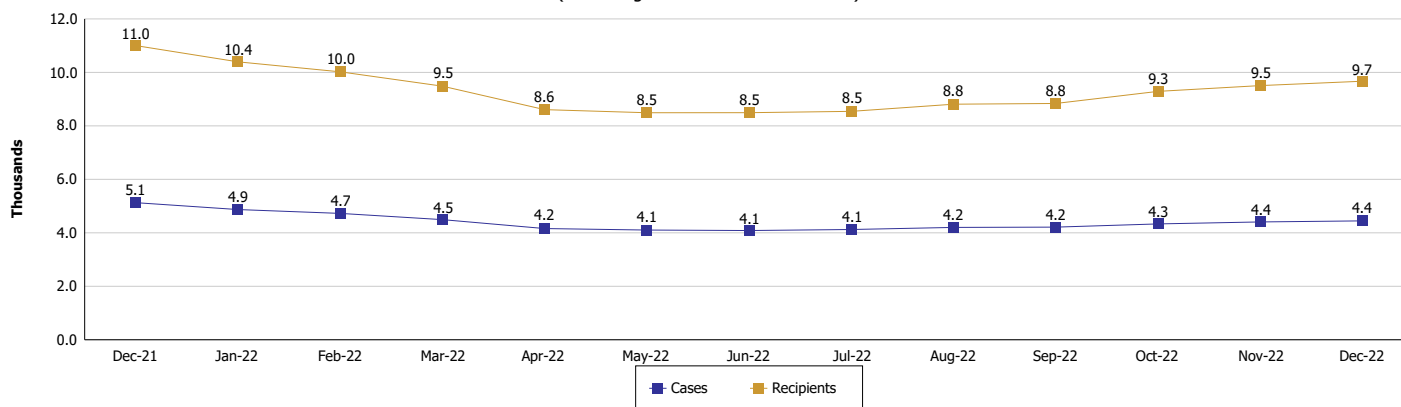
Location: Statewide

TEMPORARY ASSISTANCE FOR NEEDY FAMILIES (TANF)

TANF Cash Assistance (TANF Regular and TANF Two-Parent)



TANF Cases and Recipients (TANF Regular and TANF Two-Parent)



Note:

For August 2021, a one time payment of \$400 per recipient was included in the Total payments and Average payments. TANF section rules changed to reflect Federal reporting logic effective September 2021. For August 2022, a one-time payment of \$269 per recipient was included in the Total payments and Average payments.



DIVISION OF FAMILY RESOURCES

Monthly Management Report

Reporting Month: December 2022

Location: Statewide

SUPPLEMENTAL NUTRITION ASSISTANCE PROGRAM (SNAP)

	December 2022	November 2022	December 2021	Annual Change
Total issuance	\$115,859,001	\$115,278,447	\$151,732,984	-23.64%
Number of households receiving SNAP benefits	283,304	282,679	286,835	-1.23%
Number of recipients	598,016	596,615	611,880	-2.27%
Average issuance per household	\$408.96	\$407.81	\$528.99	-22.69%
Average issuance per recipient	\$193.74	\$193.22	\$247.98	-21.87%
Number of Applications	21,844	20,738	17,914	21.94%



DIVISION OF FAMILY RESOURCES

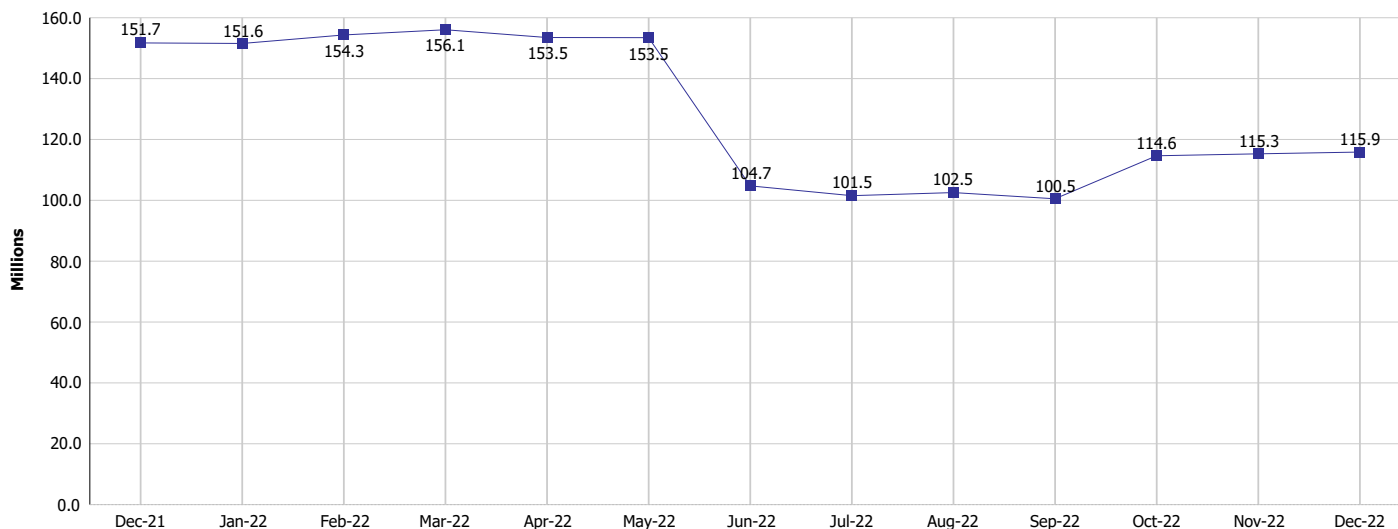
Monthly Management Report

Reporting Month: December 2022

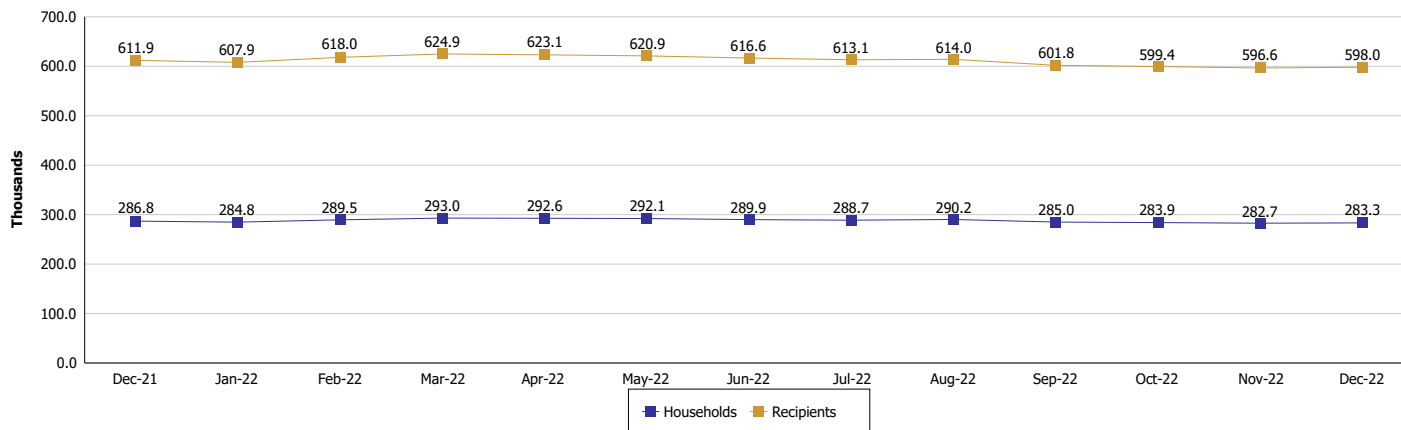
Location: Statewide

SUPPLEMENTAL NUTRITION ASSISTANCE PROGRAM (SNAP)

SNAP Issuance



SNAP Households and Recipients



Note:

Run Date: Jan 11, 2023



DIVISION OF FAMILY RESOURCES

Monthly Management Report

Reporting Month: December 2022

Location: Statewide

HIP 2.0 and SNAP

	December 2022	November 2022	December 2021	Annual Change
Total HIP 2.0 Members	834,597	825,094	739,798	12.81%
HIP Members also SNAP Recipients	179,990	180,332	181,996	-1.10%
Percentage HIP Members SNAP Recipients	21.6%	21.9%	24.6%	-3.03
HIP Members SNAP ABAWDs	12,558	13,077	0	0%
Percentage HIP Members SNAP ABAWDs	1.5%	1.6%	0	1.5



DIVISION OF FAMILY RESOURCES

Monthly Management Report

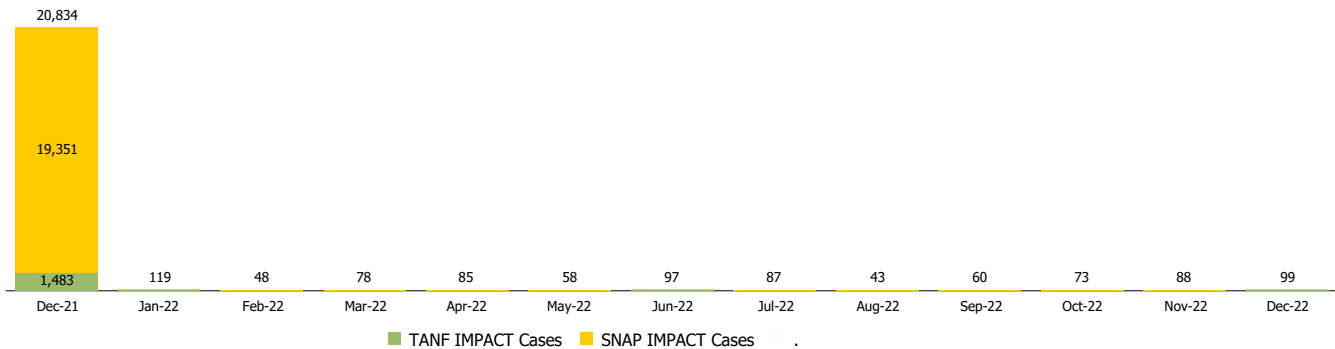
Reporting Month: December 2022

Location: Statewide

INDIANA MANPOWER PLACEMENT AND COMPREHENSIVE TRAINING (IMPACT)

	December 2022	November 2022	December 2021	Annual Change
Number of IMPACT cases	99	88	20,834	-99.52%
Number of TANF IMPACT adults	41	33	1,483	-97.24%
Number of SNAP IMPACT Cases	58	55	19,351	-99.70%
Total number of adults employed	2,954	3,055	2,005	47.33%
Number of TANF IMPACT adults newly employed (within past 30 days)	41	48	48	-14.58%
Number of SNAP IMPACT adults employed	2,913	3,007	1,957	48.85%
Total number of adults ineligible due to employment	1,392	1,369	2,453	-43.25%
Number of TANF adults ineligible due to employment	24	23	13	84.62%
Number of SNAP adults ineligible due to employment	1,368	1,346	2,440	-43.93%

IMPACT Caseloads (SNAP, TANF, Total Caseload)



Note:

Effective January 2022, these numbers have been adjusted to reflect only those actually participating in IMPACT.