



DIVISION OF FAMILY RESOURCES

Monthly Management Report December 2021

State of Indiana

Eric Holcomb
Governor

Family and Social Services Administration

Dan Rusyniak, MD
Secretary

Division of Family Resources

Adrienne Shields
Director

For questions regarding data on this report contact:
office.Communications@fssa.IN.gov



State of Indiana

Published January 2022



DIVISION OF FAMILY RESOURCES

Monthly Management Report

Reporting Month: December 2021

Location: Statewide

TEMPORARY ASSISTANCE FOR NEEDY FAMILIES (TANF)

Child-Only and One-Parent Families	Dec 31, 2021	November 2021	December 2020	Annual Change
Number of families receiving TANF Grants	4,687	4,961	7,842	-40.23%
Total number of grant recipients	9,753	10,438	17,931	-45.61%
Number of adult grant recipients	1,309	1,536	3,800	-65.55%
Number of child grant recipients	8,444	8,902	14,131	-40.24%
Total payments	\$940,964	\$1,003,449	\$1,647,599	-42.89%
Average payment per case	\$200.76	\$202.27	\$210.10	-4.45%
Average payment per recipient	\$96.48	\$96.13	\$91.89	5.00%
Number of cases with benefits reduced to zero	158	206	410	-61.46%
Number of recipients with benefits reduced to zero	338	442	1,019	-66.83%
Number of adult recipients with benefit reduced to zero	74	104	277	-73.29%
Number of child recipients with benefit reduced to zero	264	338	742	-64.42%

Two-Parent Families	Dec 31, 2021	November 2021	December 2020	Annual Change
Number of families receiving TANF Grants	281	308	766	-63.32%
Total number of grant recipients	904	999	2,612	-65.39%
Number of adult grant recipients	295	337	855	-65.50%
Number of child grant recipients	609	662	1,757	-65.34%
Total payments	\$77,772	\$84,519	\$206,344	-62.31%
Average payment per case	\$276.77	\$274.41	\$269.38	2.74%
Average payment per recipient	\$86.03	\$84.60	\$79.00	8.90%
Number of cases with benefits reduced to zero	2	5	45	-95.56%
Number of recipients with benefits reduced to zero	8	22	180	-95.56%
Number of adult recipients with benefit reduced to zero	4	10	71	-94.37%
Number of child recipients with benefit reduced to zero	4	12	109	-96.33%

Note:

*For August 2021, a one time payment of \$400 per recipient was included in the Total payments and Average payments.

Source:



DIVISION OF FAMILY RESOURCES

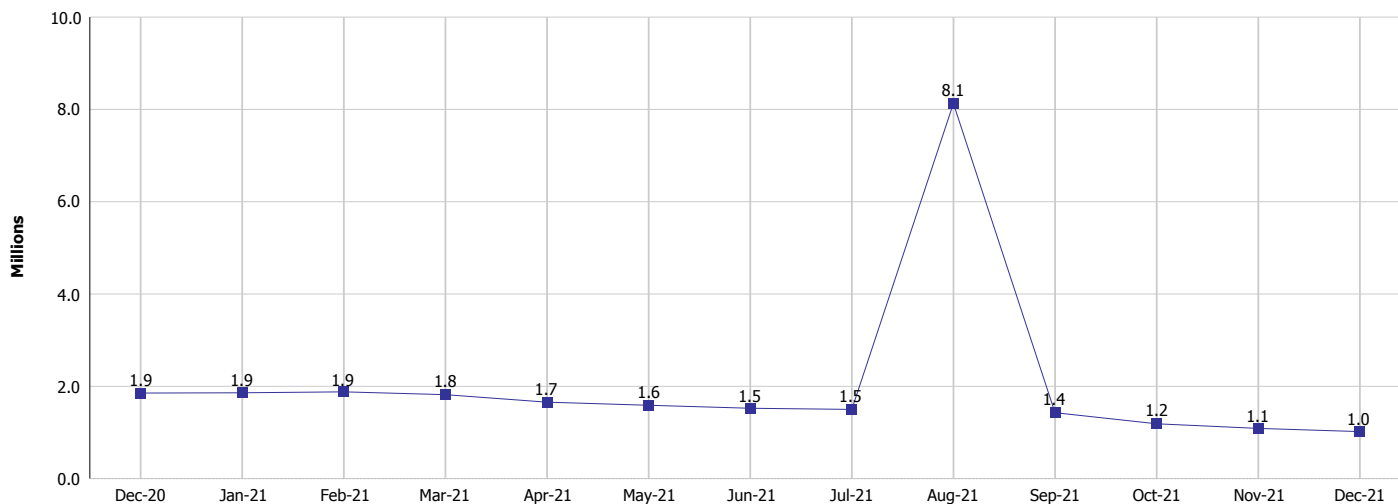
Monthly Management Report

Reporting Month: December 2021

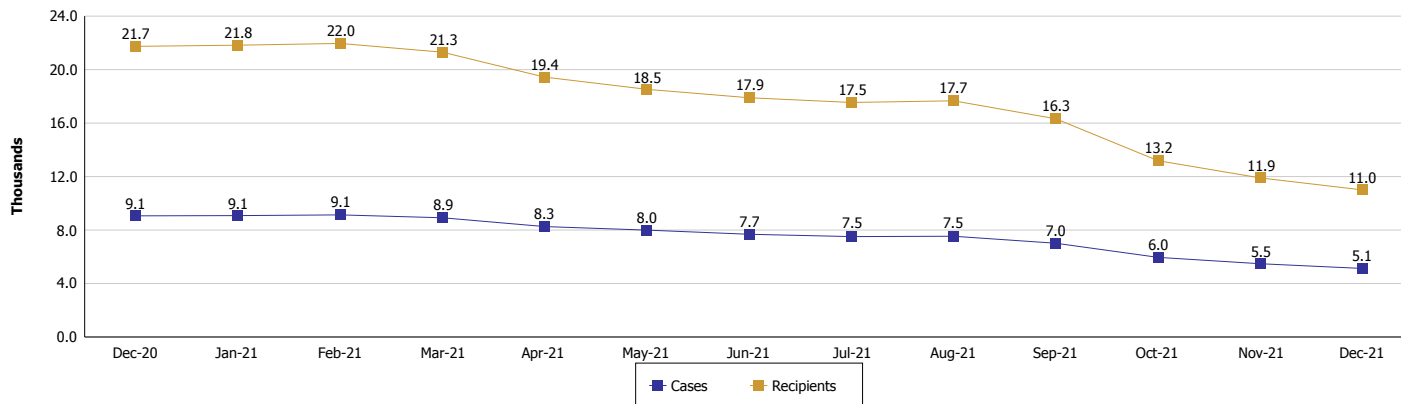
Location: Statewide

TEMPORARY ASSISTANCE FOR NEEDY FAMILIES (TANF)

TANF Cash Assistance
(TANF Regular and TANF Two-Parent)



TANF Cases and Recipients
(TANF Regular and TANF Two-Parent)



Note:

*For August 2021, a one time payment of \$400 per recipient was included in the Total payments and Average payments.



DIVISION OF FAMILY RESOURCES

Monthly Management Report

Reporting Month: December 2021

Location: Statewide

SUPPLEMENTAL NUTRITION ASSISTANCE PROGRAM (SNAP)

	December 2021	November 2021	December 2020	Annual Change
Total issuance	\$151,732,984	\$153,850,045	\$124,914,906	21.47%
Number of households receiving SNAP benefits	286,835	292,710	306,899	-6.54%
Number of recipients	611,880	623,407	663,854	-7.83%
Average issuance per household	\$528.99	\$525.61	\$407.02	29.97%
Average issuance per recipient	\$247.98	\$246.79	\$188.17	31.79%

Note:

All data July 2014 and following will be broken out according to the new DFR region structure effective July 1 2014.

SNAP ERROR RATES

	August 2021	July 2021	Cumulative FFY
FFY Cumulative Positive Error Rate	9.41%	10.44%	
Monthly Positive Error Rate	8.16%	10.44%	NA
FFY Cumulative Negative Error Rate	46.30%	43.40%	
Monthly Negative Error Rate	49.09%	43.40%	NA

Note:

All data July 2014 and following will be broken out according to the new DFR region structure effective July 1 2014.

Notes:

Reporting periods for SNAP Error Rates reflect the review period and Federal submission deadline. The month reported above is the month in which an action was taken included in the review sample.

Positive actions are those which produced an issuance of benefits to a household. Negative actions are those which closed or denied benefits to a household.

Error Rate data is reported by the state before the federal agency has accepted and finalized the results. This rate is subject to revision based upon: completion and submission of outstanding reviews; final review corrections; and completion of previously dropped reviews. Monthly numbers are taken from end-of-month totals. The error status of cases may be changed by the State or Federal Review process, which would cause a change that might not be reflected in the previous monthly numbers.



DIVISION OF FAMILY RESOURCES

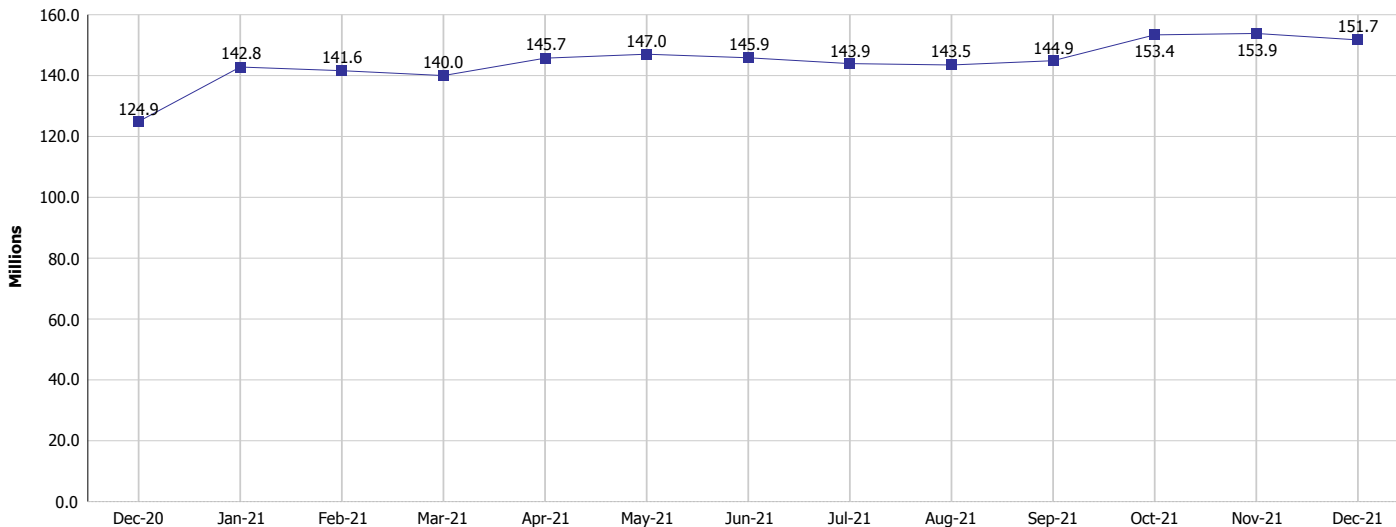
Monthly Management Report

Reporting Month: December 2021

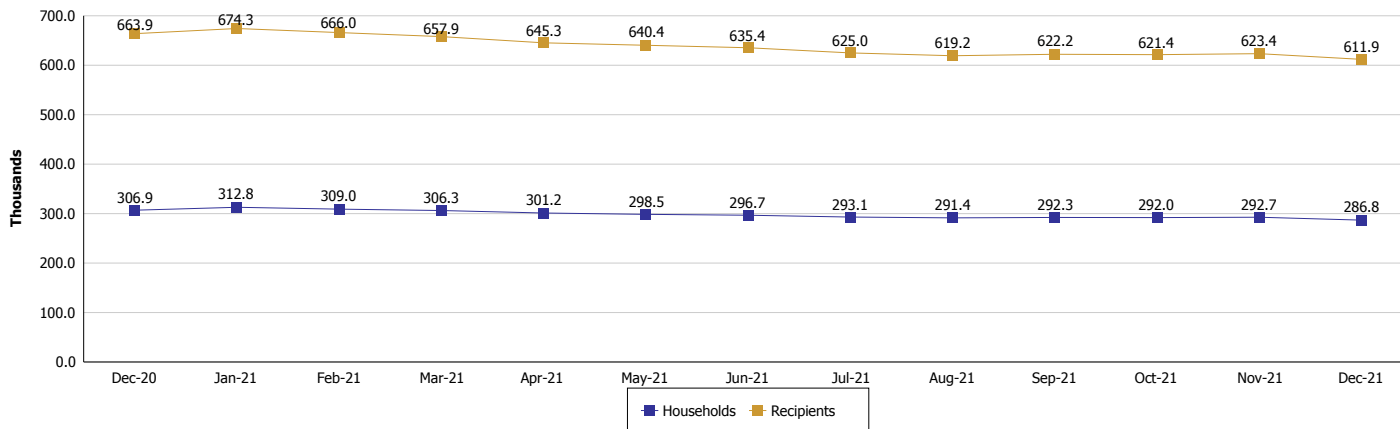
Location: Statewide

SUPPLEMENTAL NUTRITION ASSISTANCE PROGRAM (SNAP)

SNAP Issuance



SNAP Households and Recipients



Note:

All data July 2014 and following will be broken out according to the new DFR region structure effective July 1 2014.



DIVISION OF FAMILY RESOURCES

Monthly Management Report

Reporting Month: December 2021

Location: Statewide

HIP 2.0 and SNAP

	December 2021	November 2021	December 2020	Annual Change
Total HIP 2.0 Members	739,798	731,249	623,595	18.63%
HIP Members also SNAP Recipients	181,996	185,838	194,451	-6.41%
Percentage HIP Members SNAP Recipients	24.6%	25.4%	31.2%	-6.58
HIP Members SNAP ABAWDs	0	0	0	0%
Percentage HIP Members SNAP ABAWDs	0	0	0	0.0

Note:

All data July 2014 and following will be broken out according to the new DFR region structure effective July 1 2014.



DIVISION OF FAMILY RESOURCES

Monthly Management Report

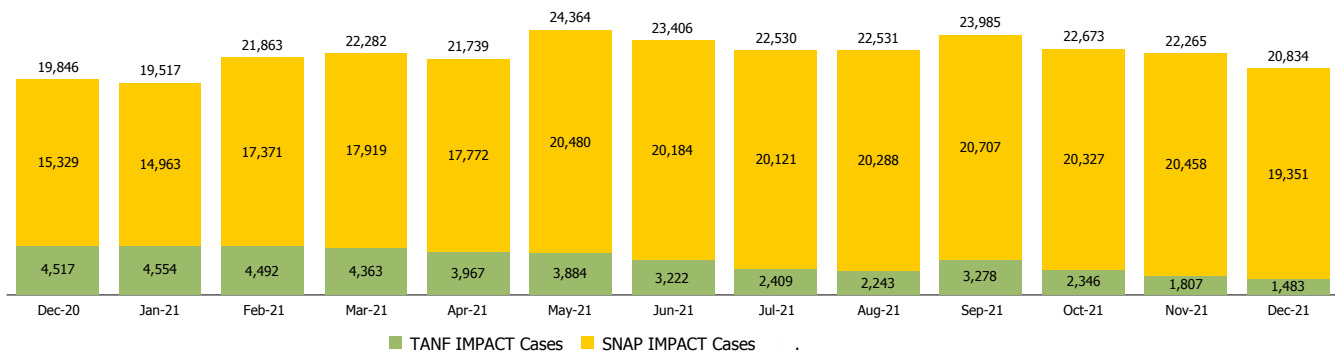
Reporting Month: December 2021

Location: Statewide

INDIANA MANPOWER PLACEMENT AND COMPREHENSIVE TRAINING (IMPACT)

	December 2021	November 2021	December 2020	Annual Change
Number of IMPACT cases	20,834	22,265	19,846	4.98%
Number of TANF IMPACT adults	1,483	1,807	4,517	-67.17%
Number of SNAP IMPACT Cases	19,351	20,458	15,329	26.24%
Total number of adults employed	2,005	2,542	1,818	10.29%
Number of TANF IMPACT adults newly employed (within past 30 days)	48	96	152	-68.42%
Number of SNAP IMPACT adults employed	1,957	2,446	1,666	17.47%
Total number of adults ineligible due to employment	2,453	2,150	2,126	15.38%
Number of TANF adults ineligible due to employment	13	20	47	-72.34%
Number of SNAP adults ineligible due to employment	2,440	2,130	2,079	17.36%

IMPACT Caseloads
(SNAP, TANF, Total Caseload)



Note:

All data July 2014 and following will be broken out according to the new DFR region structure effective July 1 2014.