



## DIVISION OF FAMILY RESOURCES

# Monthly Management Report August 2021

### State of Indiana

Eric Holcomb  
Governor

### Family and Social Services Administration

Dan Rusyniak, MD  
Secretary

### Division of Family Resources

Adrienne Shields  
Director

For questions regarding data on this report contact:  
[office.Communications@fssa.IN.gov](mailto:office.Communications@fssa.IN.gov)



## State of Indiana

Published September 2021



## DIVISION OF FAMILY RESOURCES

### Monthly Management Report

Reporting Month: August 2021

Location: Statewide

#### TEMPORARY ASSISTANCE FOR NEEDY FAMILIES (TANF)

Child-Only and One-Parent Families	Aug 31, 2021	July 2021	August 2020	Annual Change
Number of families receiving TANF Grants	6,397	5,983	7,127	-10.24%
Total number of grant recipients	14,482	13,306	16,009	-9.54%
Number of adult grant recipients	2,987	2,625	3,250	-8.09%
Number of child grant recipients	11,495	10,681	12,759	-9.91%
Total payments	\$6,701,893	\$1,249,917	\$1,473,791	354.74%
Average payment per case	\$1,047.66	\$208.91	\$206.79	406.63%
Average payment per recipient	\$462.77	\$93.94	\$92.06	402.69%
Number of cases with benefits reduced to zero	22	411	276	-92.03%
Number of recipients with benefits reduced to zero	23	1,089	691	-96.67%
Number of adult recipients with benefit reduced to zero	7	304	196	-96.43%
Number of child recipients with benefit reduced to zero	16	785	495	-96.77%

Two-Parent Families	Aug 31, 2021	July 2021	August 2020	Annual Change
Number of families receiving TANF Grants	1,114	1,053	569	95.78%
Total number of grant recipients	3,159	2,919	2,022	56.23%
Number of adult grant recipients	918	842	715	28.39%
Number of child grant recipients	2,241	2,077	1,307	71.46%
Total payments	\$1,427,476	\$249,499	\$156,053	814.74%
Average payment per case	\$1,281.40	\$236.94	\$274.26	367.22%
Average payment per recipient	\$451.88	\$85.47	\$77.18	485.50%
Number of cases with benefits reduced to zero	3	63	51	-94.12%
Number of recipients with benefits reduced to zero	4	230	204	-98.04%
Number of adult recipients with benefit reduced to zero	1	72	84	-98.81%
Number of child recipients with benefit reduced to zero	3	158	120	-97.50%

**Note:**

\*For August 2021, a one time payment of \$400 per recipient was included in the Total payments and Average payments.

Source:



## DIVISION OF FAMILY RESOURCES

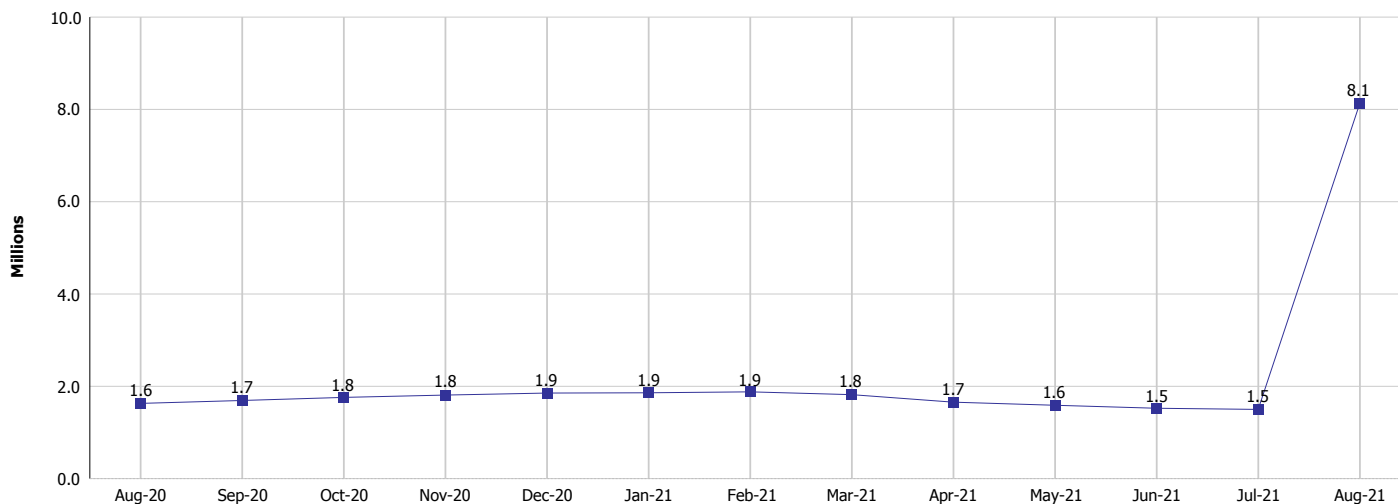
### Monthly Management Report

Reporting Month: August 2021

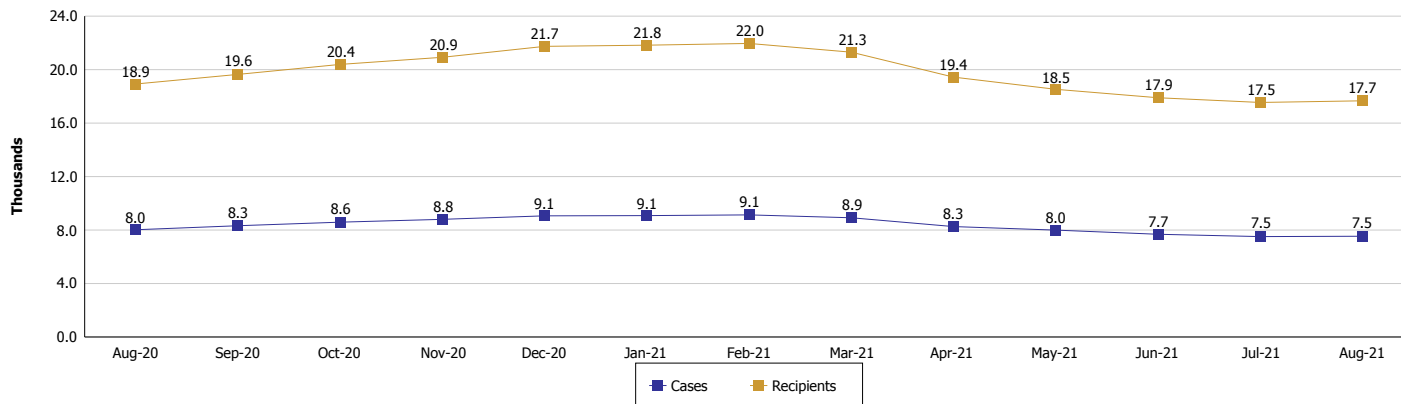
Location: Statewide

#### TEMPORARY ASSISTANCE FOR NEEDY FAMILIES (TANF)

**TANF Cash Assistance**  
(TANF Regular and TANF Two-Parent)



**TANF Cases and Recipients**  
(TANF Regular and TANF Two-Parent)



**Note:**

\*For August 2021, a one time payment of \$400 per recipient was included in the Total payments and Average payments.



## DIVISION OF FAMILY RESOURCES

### Monthly Management Report

Reporting Month: August 2021

Location: Statewide

#### SUPPLEMENTAL NUTRITION ASSISTANCE PROGRAM (SNAP)

	August 2021	July 2021	August 2020	Annual Change
Total issuance	\$143,491,661	\$143,941,752	\$112,072,294	28.03%
Number of households receiving SNAP benefits	291,435	293,072	295,642	-1.42%
Number of recipients	619,201	624,959	633,289	-2.22%
Average issuance per household	\$492.36	\$491.15	\$379.08	29.88%
Average issuance per recipient	\$231.74	\$230.32	\$176.97	30.95%

**Note:**

All data July 2014 and following will be broken out according to the new DFR region structure effective July 1 2014.

#### SNAP ERROR RATES

	Cumulative FFY
FFY Cumulative Positive Error Rate	
Monthly Positive Error Rate	NA
FFY Cumulative Negative Error Rate	
Monthly Negative Error Rate	NA

**Note:**

All data July 2014 and following will be broken out according to the new DFR region structure effective July 1 2014.

**Notes:**

Reporting periods for SNAP Error Rates reflect the review period and Federal submission deadline. The month reported above is the month in which an action was taken included in the review sample.

Positive actions are those which produced an issuance of benefits to a household. Negative actions are those which closed or denied benefits to a household.

Error Rate data is reported by the state before the federal agency has accepted and finalized the results. This rate is subject to revision based upon: completion and submission of outstanding reviews; final review corrections; and completion of previously dropped reviews. Monthly numbers are taken from end-of-month totals. The error status of cases may be changed by the State or Federal Review process, which would cause a change that might not be reflected in the previous monthly numbers.



# DIVISION OF FAMILY RESOURCES

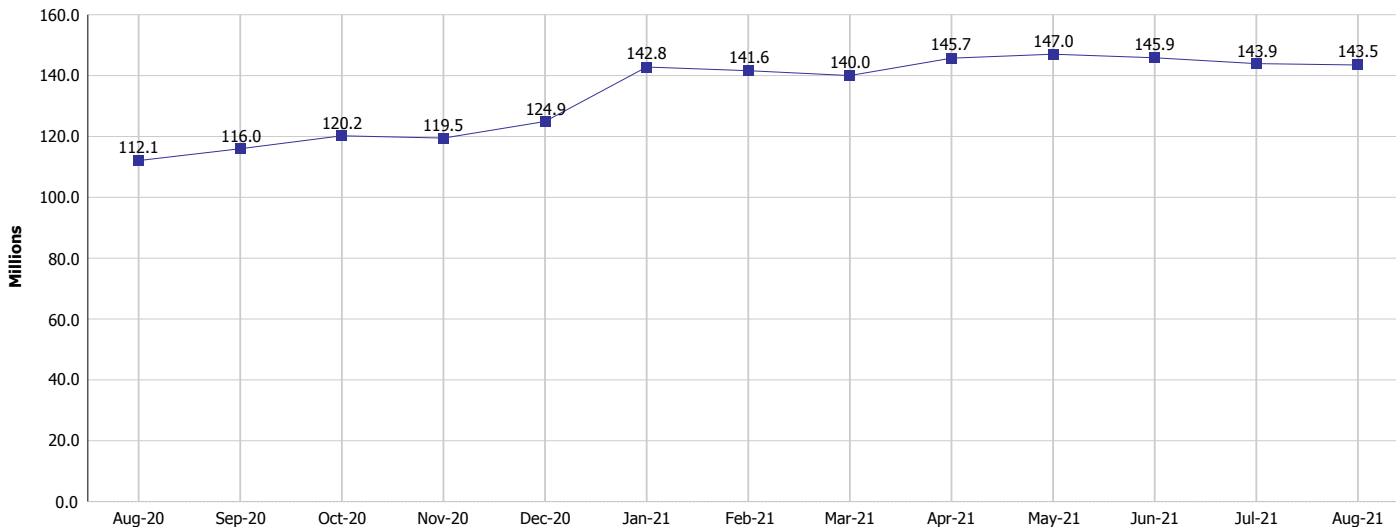
## Monthly Management Report

Reporting Month: August 2021

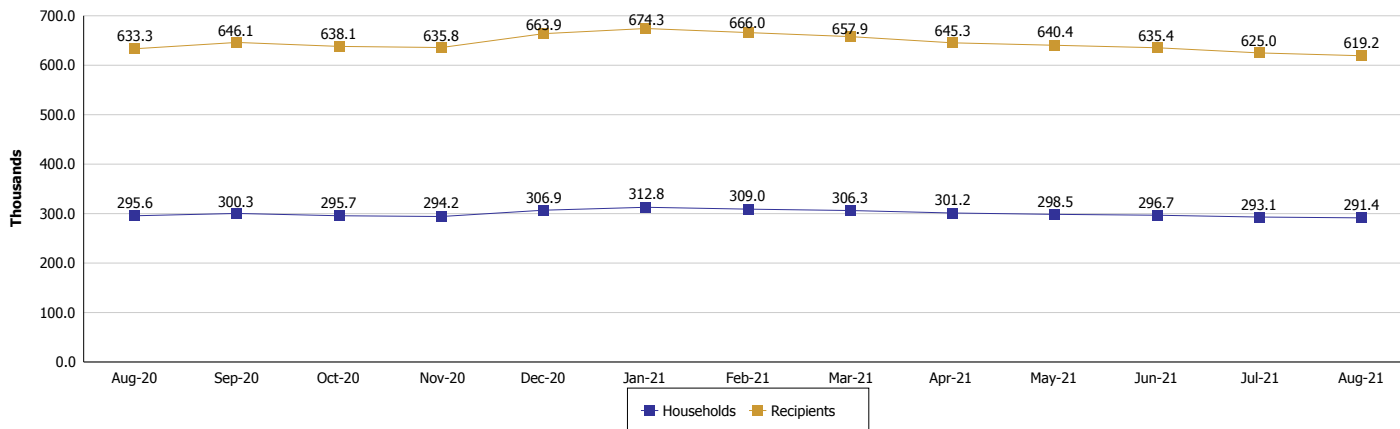
Location: Statewide

### SUPPLEMENTAL NUTRITION ASSISTANCE PROGRAM (SNAP)

#### SNAP Issuance



#### SNAP Households and Recipients



**Note:**

All data July 2014 and following will be broken out according to the new DFR region structure effective July 1 2014.



## DIVISION OF FAMILY RESOURCES

### Monthly Management Report

Reporting Month: August 2021

Location: Statewide

#### HIP 2.0 and SNAP

	August 2021	July 2021	August 2020	Annual Change
Total HIP 2.0 Members	706,930	695,520	539,209	31.11%
HIP Members also SNAP Recipients	185,095	186,215	170,284	8.70%
Percentage HIP Members SNAP Recipients	26.2%	26.8%	31.6%	-5.40
HIP Members SNAP ABAWDs	0	0	1,569	-100.00%
Percentage HIP Members SNAP ABAWDs	0	0	0.3%	-0.3

**Note:**

All data July 2014 and following will be broken out according to the new DFR region structure effective July 1 2014.



## DIVISION OF FAMILY RESOURCES

### Monthly Management Report

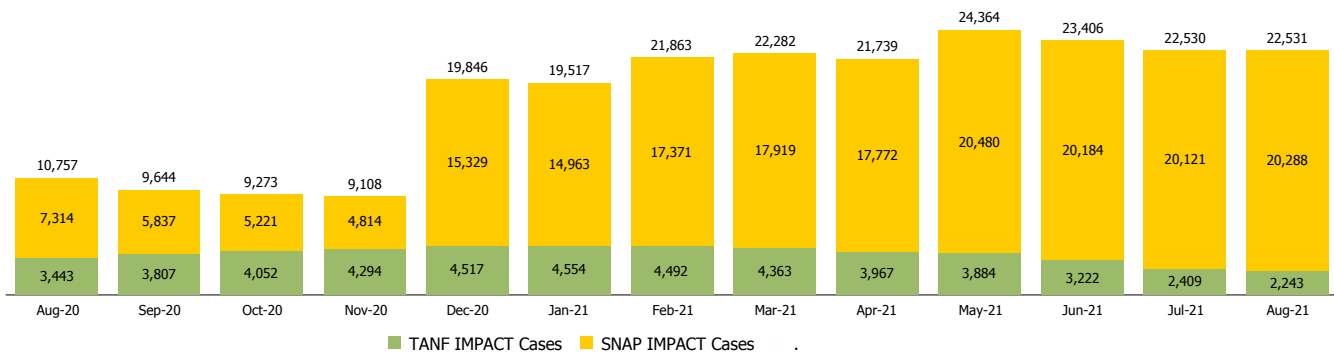
Reporting Month: August 2021

Location: Statewide

#### INDIANA MANPOWER PLACEMENT AND COMPREHENSIVE TRAINING (IMPACT)

	August 2021	July 2021	August 2020	Annual Change
Number of IMPACT cases	22,531	22,530	10,757	109.45%
Number of TANF IMPACT adults	2,243	2,409	3,443	-34.85%
Number of SNAP IMPACT Cases	20,288	20,121	7,314	177.39%
Total number of adults employed	3,413	2,209	1,224	178.84%
Number of TANF IMPACT adults newly employed (within past 30 days)	187	161	256	-26.95%
Number of SNAP IMPACT adults employed	3,226	2,048	968	233.26%
Total number of adults ineligible due to employment	2,415	2,461	10,962	-77.97%
Number of TANF adults ineligible due to employment	14	22	31	-54.84%
Number of SNAP adults ineligible due to employment	2,401	2,439	10,931	-78.03%

**IMPACT Caseloads**  
(SNAP, TANF, Total Caseload)



**Note:**

All data July 2014 and following will be broken out according to the new DFR region structure effective July 1 2014.