



## DIVISION OF FAMILY RESOURCES

# Putnam County Monthly Management Report December 2023

### State of Indiana

Eric Holcomb  
Governor

### Family and Social Services Administration

Dan Rusyniak, MD  
Secretary

### Division of Family Resources

Adrienne Shields  
Director

For questions regarding data on this report contact:  
[office.Communications@fssa.IN.gov](mailto:office.Communications@fssa.IN.gov)



## State of Indiana

Published January 2024



## DIVISION OF FAMILY RESOURCES

### Monthly Management Report

Reporting Month: December 2023

Location: Putnam County

#### TEMPORARY ASSISTANCE FOR NEEDY FAMILIES (TANF)

Child-Only and One-Parent Families	December 2023	November 2023	December 2022	Annual Change
Number of families receiving TANF Grants	10	10	4	150.00%
Total number of grant recipients	16	16	6	166.67%
Number of adult grant recipients	3	3	1	200.00%
Number of child grant recipients	13	13	5	160.00%
Total payments	\$1,728	\$1,728	\$665	159.85%
Average payment per case	\$172.80	\$172.80	\$166.25	3.94%
Average payment per recipient	\$108.00	\$108.00	\$110.83	-2.56%
Number of cases with benefits reduced to zero	0	0	0	0%
Number of recipients with benefits reduced to zero	0	0	0	0%
Number of adult recipients with benefit reduced to zero	0	0	0	0%
Number of child recipients with benefit reduced to zero	0	0	0	0%

Two-Parent Families	December 2023	November 2023	December 2022	Annual Change
Number of families receiving TANF Grants	0	0	2	-100.00%
Total number of grant recipients	0	0	4	-100.00%
Number of adult grant recipients	0	0	1	-100.00%
Number of child grant recipients	0	0	3	-100.00%
Total payments	\$0	\$0	\$427	-100.00%
Average payment per case	\$0.00	\$0.00	\$213.50	-100.00%
Average payment per recipient	\$0.00	\$0.00	\$106.75	-100.00%
Number of cases with benefits reduced to zero	0	0	0	0%
Number of recipients with benefits reduced to zero	0	0	0	0%
Number of adult recipients with benefit reduced to zero	0	0	0	0%
Number of child recipients with benefit reduced to zero	0	0	0	0%

**Note:**

For August 2021, a one time payment of \$400 per recipient was included in the Total payments and Average payments. TANF section rules changed to reflect Federal reporting logic effective September 2021. For August 2022, a one-time payment of \$269 per recipient was included in the Total payments and Average payments.

Source:



## DIVISION OF FAMILY RESOURCES

### Monthly Management Report

Reporting Month: December 2023

Location: Putnam County

#### TANF - APPLICATIONS

	December 2023	November 2023	December 2022	Annual Change
<b>Number of Applications</b>	16	22	18	-11.11%

#### TANF - RECIPIENTS BY ZIP CODE

ZIP Code	Households	Recipients
46105	1	2
46120	3	6
46128	1	1
46135	4	6
46175	1	1
<b>Total</b>	<b>10</b>	<b>16</b>



# DIVISION OF FAMILY RESOURCES

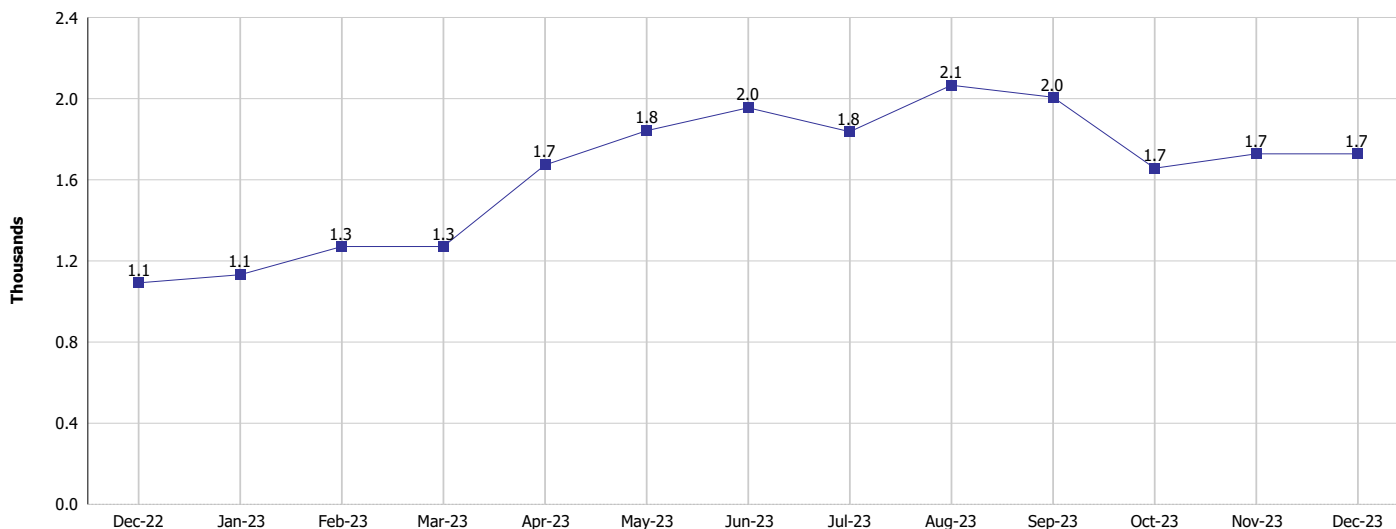
## Monthly Management Report

Reporting Month: December 2023

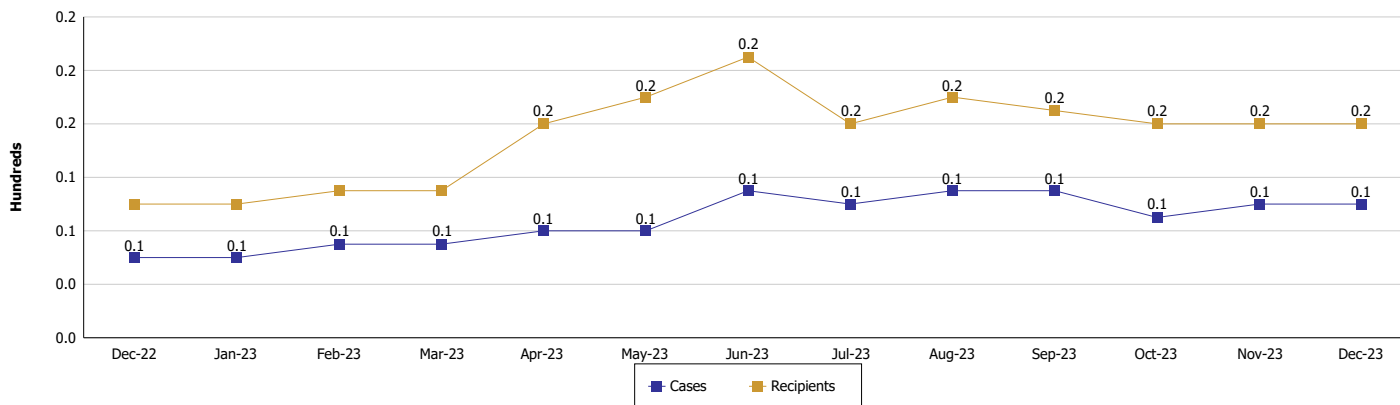
Location: Putnam County

### TEMPORARY ASSISTANCE FOR NEEDY FAMILIES (TANF)

#### TANF Regular And TANF Two-Parent Cash Assistance



#### TANF Cases and Recipients (TANF Regular and TANF Two-Parent)



#### Note:

For August 2021, a one time payment of \$400 per recipient was included in the Total payments and Average payments. TANF section rules changed to reflect Federal reporting logic effective September 2021. For August 2022, a one-time payment of \$269 per recipient was included in the Total payments and Average payments.



## DIVISION OF FAMILY RESOURCES

### Monthly Management Report

Reporting Month: December 2023

Location: Putnam County

#### SUPPLEMENTAL NUTRITION ASSISTANCE PROGRAM (SNAP)

	December 2023	November 2023	December 2022	Annual Change
Total issuance	\$465,028	\$459,924	\$435,271	6.84%
Number of households receiving SNAP benefits	1,174	1,173	1,153	1.82%
Number of recipients	2,375	2,365	2,318	2.46%
Average issuance per household	\$396.11	\$392.09	\$377.51	4.93%
Average issuance per recipient	\$195.8	\$194.47	\$187.78	4.27%
Number of Applications	121	157	126	-3.97%



## DIVISION OF FAMILY RESOURCES

### Monthly Management Report

Reporting Month: December 2023

Location: Putnam County

#### SNAP - RECIPIENTS BY ZIP CODE

ZIP Code	Households	Recipients
46105	51	110
46120	174	332
46121	50	107
46128	48	96
46135	661	1,319
46165	2	7
46168	1	1
46170	1	5
46171	68	129
46172	81	182
46175	26	59
46201	1	1
46226	1	1
47460	1	3
47802	1	5
47834	1	6
47840	1	1
47855	1	1
47868	2	4
47933	1	3
47989	1	3
<b>Totals</b>	<b>1,174</b>	<b>2,375</b>



# DIVISION OF FAMILY RESOURCES

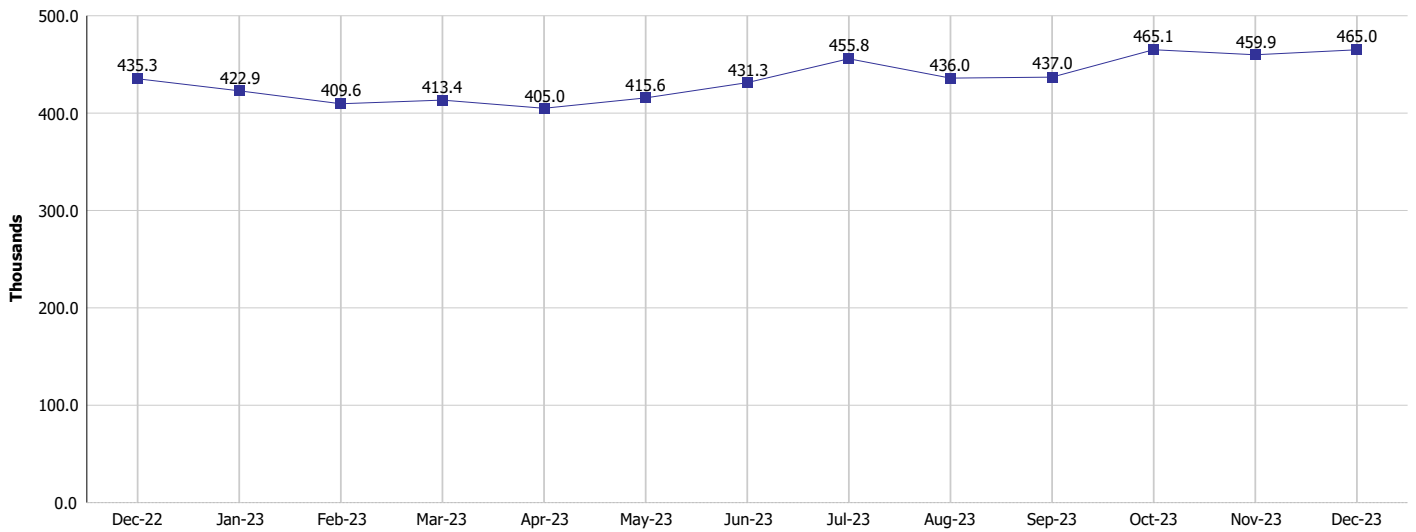
## Monthly Management Report

Reporting Month: December 2023

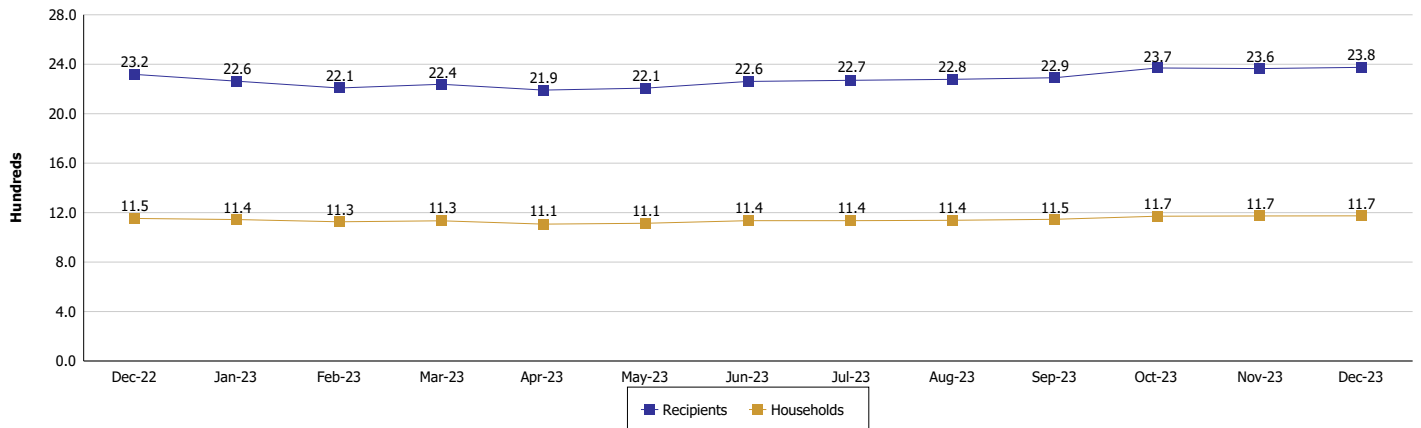
Location: Putnam County

### SUPPLEMENTAL NUTRITION ASSISTANCE PROGRAM (SNAP)

#### SNAP Issuance



#### SNAP Households and Recipients



**Note:**

Run Date: Jan 12, 2024



## DIVISION OF FAMILY RESOURCES

### Monthly Management Report

Reporting Month: December 2023

Location: Putnam County

#### HIP 2.0 and SNAP

	December 2023	November 2023	December 2022	Annual Change
Total HIP 2.0 Members	3,448	3,516	3,759	-8.27%
HIP Members also SNAP Recipients	773	790	759	1.84%
Percentage HIP Members SNAP Recipients	22.4%	22.5%	20.2%	2.23
HIP Members SNAP ABAWDs	29	32	53	-45.28%
Percentage HIP Members SNAP ABAWDs	0.8%	0.9%	1.4%	-0.6





## DIVISION OF FAMILY RESOURCES

### Monthly Management Report

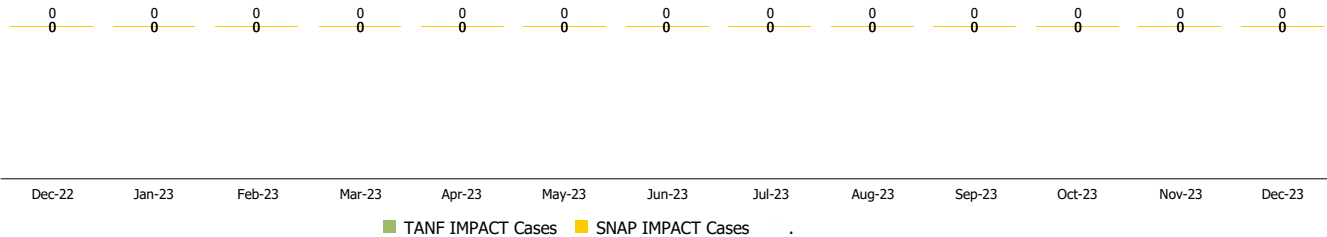
Reporting Month: December 2023

Location: Putnam County

#### INDIANA MANPOWER PLACEMENT AND COMPREHENSIVE TRAINING (IMPACT)

	December 2023	November 2023	December 2022	Annual Change
Number of IMPACT cases	0	0	0	
Number of TANF IMPACT adults	0	0	0	
Number of SNAP IMPACT Cases	0	0	0	
Total number of adults employed	3	3	9	-66.67%
Number of TANF IMPACT adults newly employed (within past 30 days)	0	0	0	
Number of SNAP IMPACT adults employed	3	3	9	-66.67%
Total number of adults ineligible due to employment	6	3	2	200.00%
Number of TANF adults ineligible due to employment	0	0	0	
Number of SNAP adults ineligible due to employment	6	3	2	200.00%

#### IMPACT Caseloads (SNAP, TANF, Total Caseload)



**Note:**

Effective January 2022, these numbers have been adjusted to reflect only those actually participating in IMPACT.