



DIVISION OF FAMILY RESOURCES

Porter County Monthly Management Report December 2023

State of Indiana

Eric Holcomb
Governor

Family and Social Services Administration

Dan Rusyniak, MD
Secretary

Division of Family Resources

Adrienne Shields
Director

For questions regarding data on this report contact:
office.Communications@fssa.IN.gov



State of Indiana

Published January 2024



DIVISION OF FAMILY RESOURCES

Monthly Management Report

Reporting Month: December 2023

Location: Porter County

TEMPORARY ASSISTANCE FOR NEEDY FAMILIES (TANF)

Child-Only and One-Parent Families	December 2023	November 2023	December 2022	Annual Change
Number of families receiving TANF Grants	45	41	39	15.38%
Total number of grant recipients	103	94	69	49.28%
Number of adult grant recipients	21	18	6	250.00%
Number of child grant recipients	82	76	63	30.16%
Total payments	\$10,434	\$9,216	\$7,171	45.50%
Average payment per case	\$231.87	\$224.78	\$183.87	26.10%
Average payment per recipient	\$101.30	\$98.04	\$103.93	-2.53%
Number of cases with benefits reduced to zero	2	2	2	0.00%
Number of recipients with benefits reduced to zero	2	2	3	-33.33%
Number of adult recipients with benefit reduced to zero	0	0	0	0%
Number of child recipients with benefit reduced to zero	2	2	3	-33.33%

Two-Parent Families	December 2023	November 2023	December 2022	Annual Change
Number of families receiving TANF Grants	1	1	1	0.00%
Total number of grant recipients	4	4	1	300.00%
Number of adult grant recipients	2	2	0	0%
Number of child grant recipients	2	2	1	100.00%
Total payments	\$246	\$385	\$139	76.98%
Average payment per case	\$246.00	\$385.00	\$139.00	76.98%
Average payment per recipient	\$61.50	\$96.25	\$139.00	-55.76%
Number of cases with benefits reduced to zero	0	0	0	0%
Number of recipients with benefits reduced to zero	0	0	0	0%
Number of adult recipients with benefit reduced to zero	0	0	0	0%
Number of child recipients with benefit reduced to zero	0	0	0	0%

Note:

For August 2021, a one time payment of \$400 per recipient was included in the Total payments and Average payments. TANF section rules changed to reflect Federal reporting logic effective September 2021. For August 2022, a one-time payment of \$269 per recipient was included in the Total payments and Average payments.

Source:



DIVISION OF FAMILY RESOURCES

Monthly Management Report

Reporting Month: December 2023

Location: Porter County

TANF - APPLICATIONS

	December 2023	November 2023	December 2022	Annual Change
Number of Applications	94	132	104	-9.62%

TANF - RECIPIENTS BY ZIP CODE

ZIP Code	Households	Recipients
46304	3	9
46347	1	2
46360	1	2
46368	21	46
46383	13	34
46385	7	14
Total	46	107



DIVISION OF FAMILY RESOURCES

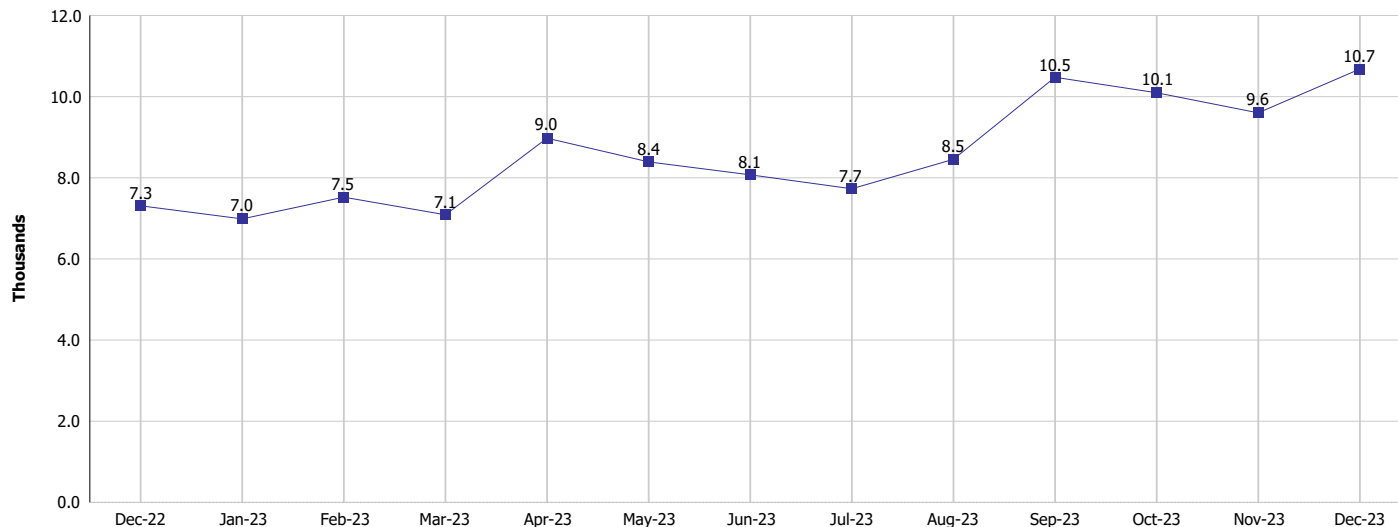
Monthly Management Report

Reporting Month: December 2023

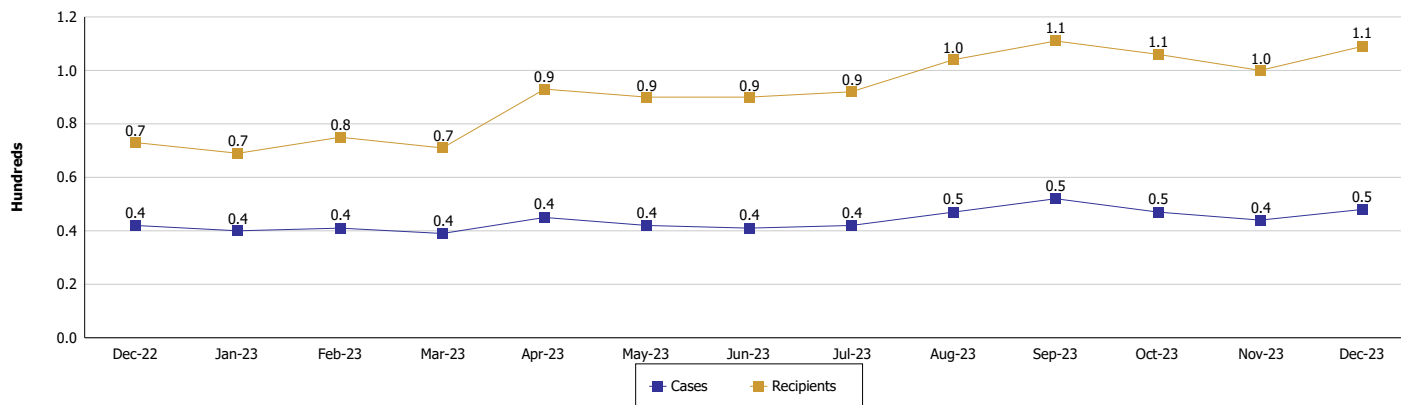
Location: Porter County

TEMPORARY ASSISTANCE FOR NEEDY FAMILIES (TANF)

TANF Regular And TANF Two-Parent Cash Assistance



TANF Cases and Recipients (TANF Regular and TANF Two-Parent)



Note:

For August 2021, a one time payment of \$400 per recipient was included in the Total payments and Average payments. TANF section rules changed to reflect Federal reporting logic effective September 2021. For August 2022, a one-time payment of \$269 per recipient was included in the Total payments and Average payments.



DIVISION OF FAMILY RESOURCES

Monthly Management Report

Reporting Month: December 2023

Location: Porter County

SUPPLEMENTAL NUTRITION ASSISTANCE PROGRAM (SNAP)

	December 2023	November 2023	December 2022	Annual Change
Total issuance	\$1,816,816	\$1,788,384	\$1,686,280	7.74%
Number of households receiving SNAP benefits	4,497	4,418	4,335	3.74%
Number of recipients	8,986	8,873	8,746	2.74%
Average issuance per household	\$404.01	\$404.79	\$388.99	3.86%
Average issuance per recipient	\$202.18	\$201.55	\$192.81	4.86%
Number of Applications	531	645	589	-9.85%



DIVISION OF FAMILY RESOURCES

Monthly Management Report

Reporting Month: December 2023

Location: Porter County

SNAP - RECIPIENTS BY ZIP CODE

ZIP Code	Households	Recipients
46060	1	1
46205	1	1
46301	6	6
46302	1	1
46304	453	939
46307	29	67
46310	3	4
46319	2	2
46323	1	1
46327	1	4
46341	206	445
46342	14	34
46347	59	129
46350	1	1
46360	61	104
46368	1,750	3,527
46375	1	3
46383	1,096	2,032
46384	1	2
46385	749	1,530
46391	30	55
46393	8	30
46394	1	2
46403	3	8
46404	3	10
46405	5	12
46406	1	5
46407	1	1
46516	1	4
46534	2	14
46960	1	1
47720	1	1
47978	1	1
None	3	9
Totals	4,497	8,986



DIVISION OF FAMILY RESOURCES

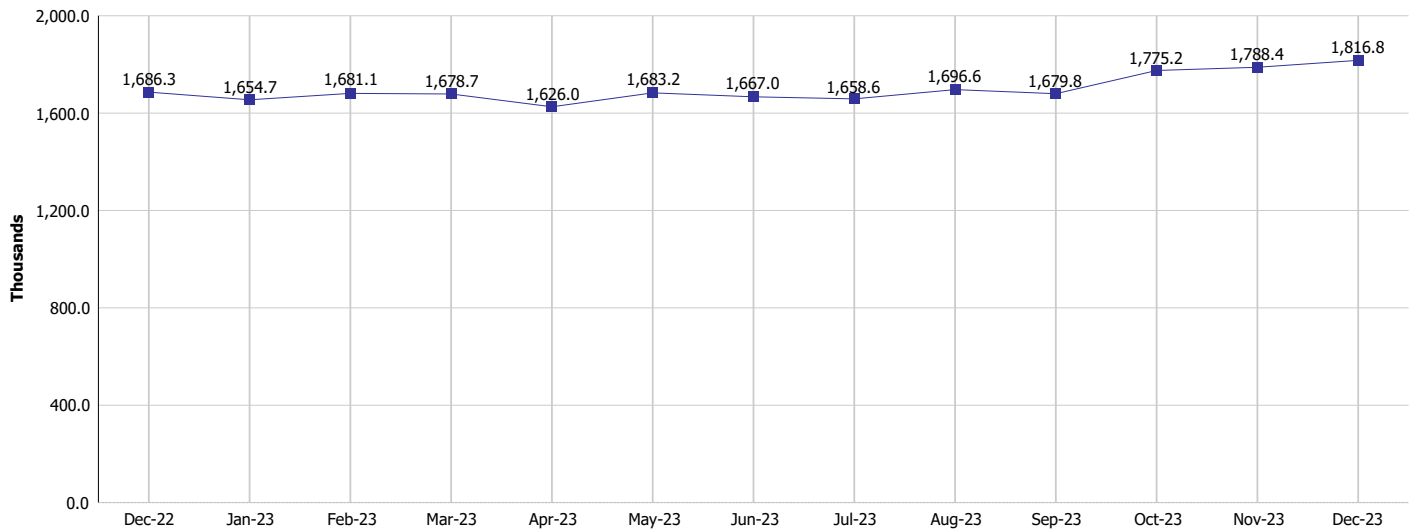
Monthly Management Report

Reporting Month: December 2023

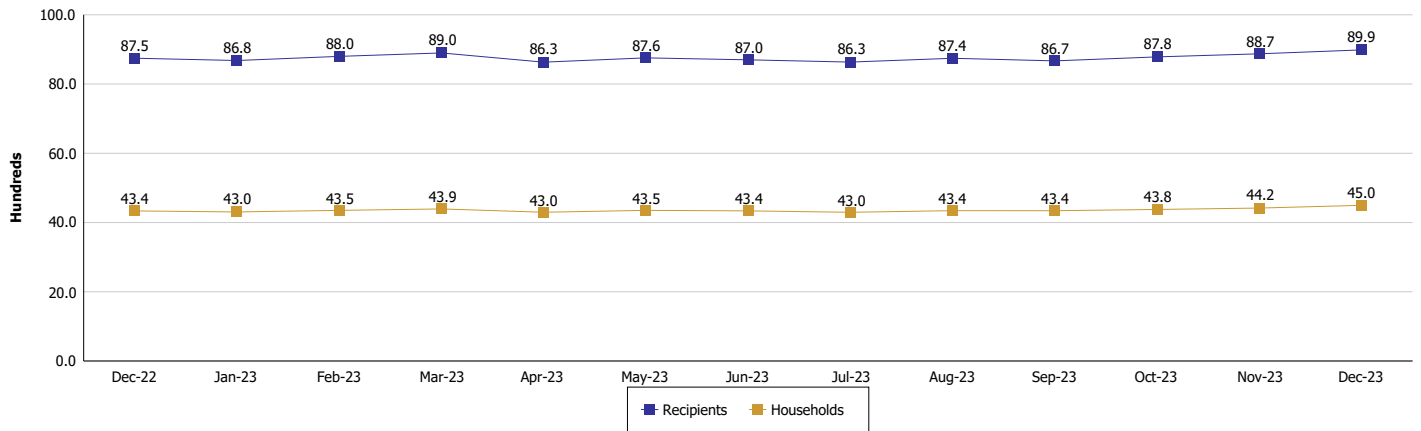
Location: Porter County

SUPPLEMENTAL NUTRITION ASSISTANCE PROGRAM (SNAP)

SNAP Issuance



SNAP Households and Recipients



Note:

Run Date: Jan 12, 2024



DIVISION OF FAMILY RESOURCES

Monthly Management Report

Reporting Month: December 2023

Location: Porter County

HIP 2.0 and SNAP

	December 2023	November 2023	December 2022	Annual Change
Total HIP 2.0 Members	14,962	15,261	16,677	-10.28%
HIP Members also SNAP Recipients	2,819	2,780	2,719	3.68%
Percentage HIP Members SNAP Recipients	18.8%	18.2%	16.3%	2.54
HIP Members SNAP ABAWDs	168	169	173	-2.89%
Percentage HIP Members SNAP ABAWDs	1.1%	1.1%	1.0%	0.1



DIVISION OF FAMILY RESOURCES

Monthly Management Report

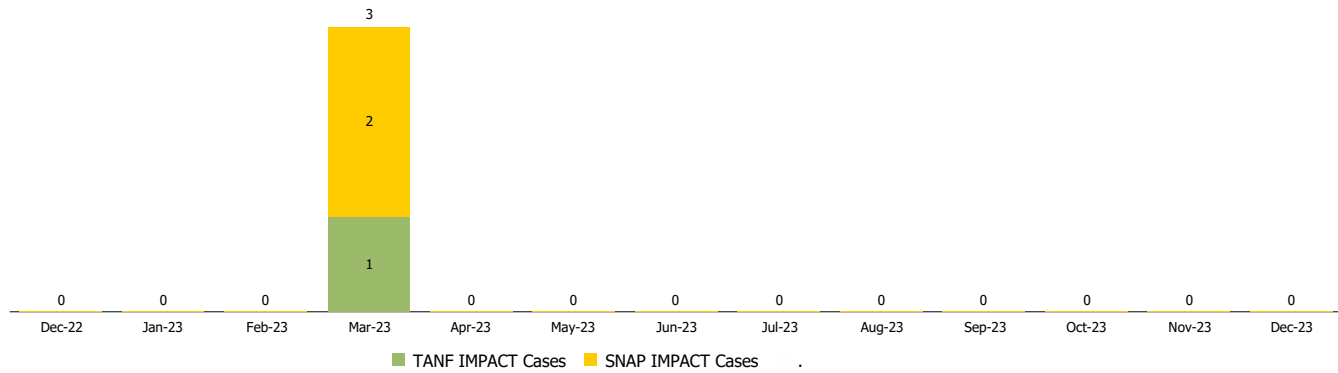
Reporting Month: December 2023

Location: Porter County

INDIANA MANPOWER PLACEMENT AND COMPREHENSIVE TRAINING (IMPACT)

	December 2023	November 2023	December 2022	Annual Change
Number of IMPACT cases	0	0	0	
Number of TANF IMPACT adults	0	0	0	
Number of SNAP IMPACT Cases	0	0	0	
Total number of adults employed	24	32	50	-52.00%
Number of TANF IMPACT adults newly employed (within past 30 days)	0	0	0	
Number of SNAP IMPACT adults employed	24	32	50	-52.00%
Total number of adults ineligible due to employment	19	28	31	-38.71%
Number of TANF adults ineligible due to employment	0	0	1	-100.00%
Number of SNAP adults ineligible due to employment	19	28	30	-36.67%

IMPACT Caseloads
(SNAP, TANF, Total Caseload)



Note:

Effective January 2022, these numbers have been adjusted to reflect only those actually participating in IMPACT.