



## DIVISION OF FAMILY RESOURCES

# Perry County Monthly Management Report December 2023

### State of Indiana

Eric Holcomb  
Governor

### Family and Social Services Administration

Dan Rusyniak, MD  
Secretary

### Division of Family Resources

Adrienne Shields  
Director

For questions regarding data on this report contact:  
[office.Communications@fssa.IN.gov](mailto:office.Communications@fssa.IN.gov)



## State of Indiana

Published January 2024



## DIVISION OF FAMILY RESOURCES

### Monthly Management Report

Reporting Month: December 2023

Location: Perry County

#### TEMPORARY ASSISTANCE FOR NEEDY FAMILIES (TANF)

Child-Only and One-Parent Families	December 2023	November 2023	December 2022	Annual Change
Number of families receiving TANF Grants	9	9	8	12.50%
Total number of grant recipients	13	13	12	8.33%
Number of adult grant recipients	1	1	1	0.00%
Number of child grant recipients	12	12	11	9.09%
Total payments	\$1,674	\$1,674	\$1,279	30.88%
Average payment per case	\$186.00	\$186.00	\$159.88	16.34%
Average payment per recipient	\$128.77	\$128.77	\$106.58	20.82%
Number of cases with benefits reduced to zero	0	0	0	0%
Number of recipients with benefits reduced to zero	0	0	0	0%
Number of adult recipients with benefit reduced to zero	0	0	0	0%
Number of child recipients with benefit reduced to zero	0	0	0	0%

Two-Parent Families	December 2023	November 2023	December 2022	Annual Change
Number of families receiving TANF Grants	0	0	2	-100.00%
Total number of grant recipients	0	0	5	-100.00%
Number of adult grant recipients	0	0	0	0%
Number of child grant recipients	0	0	5	-100.00%
Total payments	\$0	\$0	\$454	-100.00%
Average payment per case	\$0.00	\$0.00	\$227.00	-100.00%
Average payment per recipient	\$0.00	\$0.00	\$90.80	-100.00%
Number of cases with benefits reduced to zero	0	0	0	0%
Number of recipients with benefits reduced to zero	0	0	0	0%
Number of adult recipients with benefit reduced to zero	0	0	0	0%
Number of child recipients with benefit reduced to zero	0	0	0	0%

**Note:**

For August 2021, a one time payment of \$400 per recipient was included in the Total payments and Average payments. TANF section rules changed to reflect Federal reporting logic effective September 2021. For August 2022, a one-time payment of \$269 per recipient was included in the Total payments and Average payments.

Source:



## DIVISION OF FAMILY RESOURCES

### Monthly Management Report

Reporting Month: December 2023

Location: Perry County

#### TANF - APPLICATIONS

	December 2023	November 2023	December 2022	Annual Change
<b>Number of Applications</b>	11	19	14	-21.43%

#### TANF - RECIPIENTS BY ZIP CODE

ZIP Code	Households	Recipients
47520	3	3
47586	6	10
<b>Total</b>	<b>9</b>	<b>13</b>



# DIVISION OF FAMILY RESOURCES

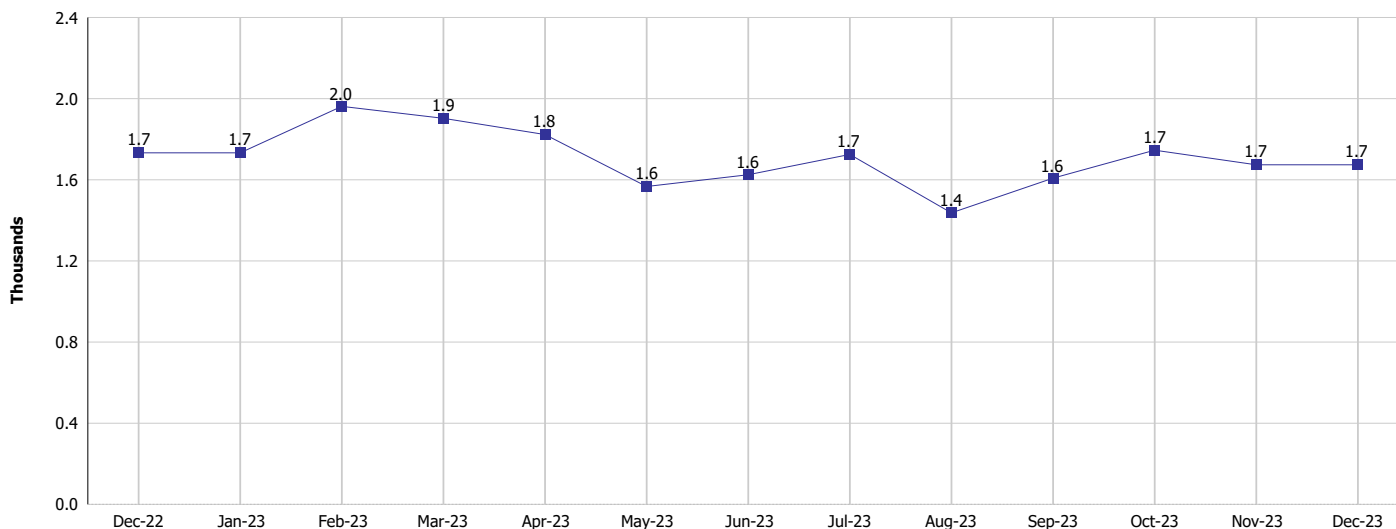
## Monthly Management Report

Reporting Month: December 2023

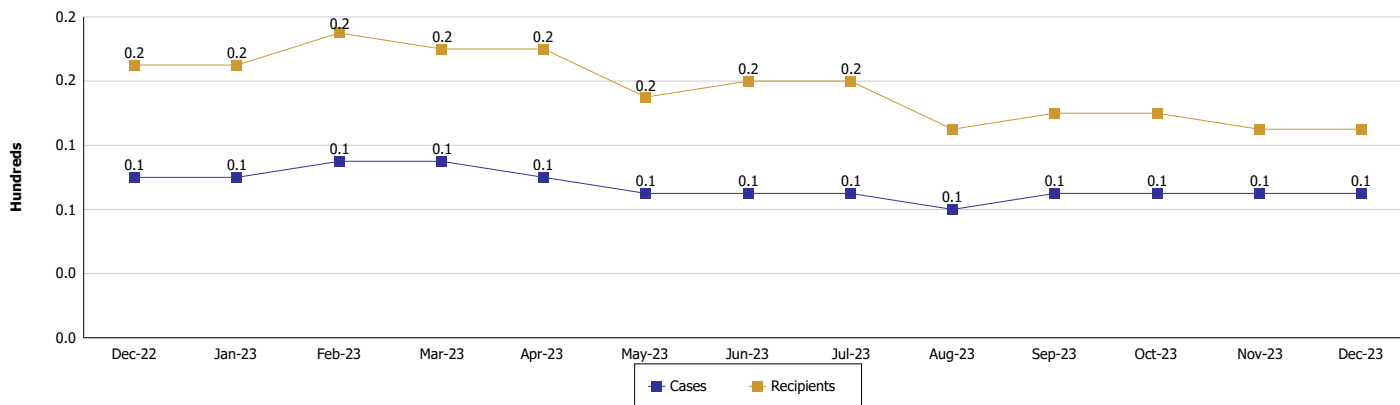
Location: Perry County

### TEMPORARY ASSISTANCE FOR NEEDY FAMILIES (TANF)

#### TANF Regular And TANF Two-Parent Cash Assistance



#### TANF Cases and Recipients (TANF Regular and TANF Two-Parent)



#### Note:

For August 2021, a one time payment of \$400 per recipient was included in the Total payments and Average payments. TANF section rules changed to reflect Federal reporting logic effective September 2021. For August 2022, a one-time payment of \$269 per recipient was included in the Total payments and Average payments.



## DIVISION OF FAMILY RESOURCES

### Monthly Management Report

Reporting Month: December 2023

Location: Perry County

#### SUPPLEMENTAL NUTRITION ASSISTANCE PROGRAM (SNAP)

	December 2023	November 2023	December 2022	Annual Change
Total issuance	\$289,897	\$289,427	\$286,849	1.06%
Number of households receiving SNAP benefits	750	752	756	-0.79%
Number of recipients	1,516	1,528	1,564	-3.07%
Average issuance per household	\$386.53	\$384.88	\$379.43	1.87%
Average issuance per recipient	\$191.22	\$189.42	\$183.41	4.26%
Number of Applications	78	103	71	9.86%



## DIVISION OF FAMILY RESOURCES

### Monthly Management Report

Reporting Month: December 2023

Location: Perry County

#### SNAP - RECIPIENTS BY ZIP CODE

ZIP Code	Households	Recipients
46226	1	1
46310	1	1
47118	6	15
47501	1	5
47514	2	2
47515	14	36
47520	215	418
47525	9	13
47532	1	1
47551	5	5
47574	2	4
47576	8	19
47586	462	943
47588	21	45
47701	1	6
None	1	2
<b>Totals</b>	<b>750</b>	<b>1,516</b>



# DIVISION OF FAMILY RESOURCES

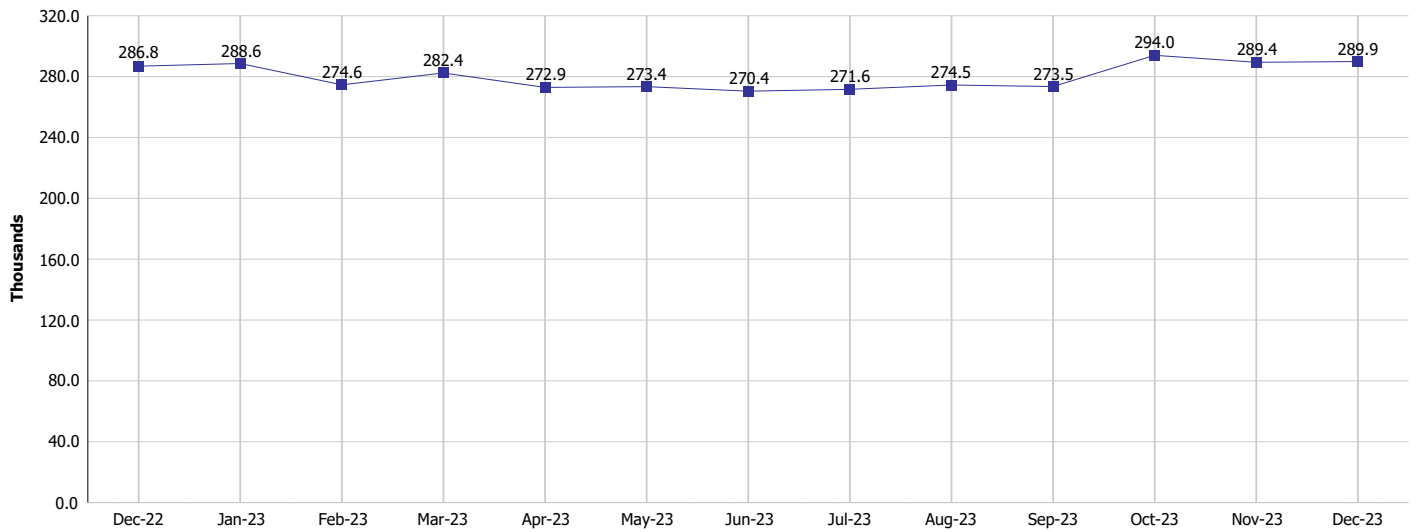
## Monthly Management Report

Reporting Month: December 2023

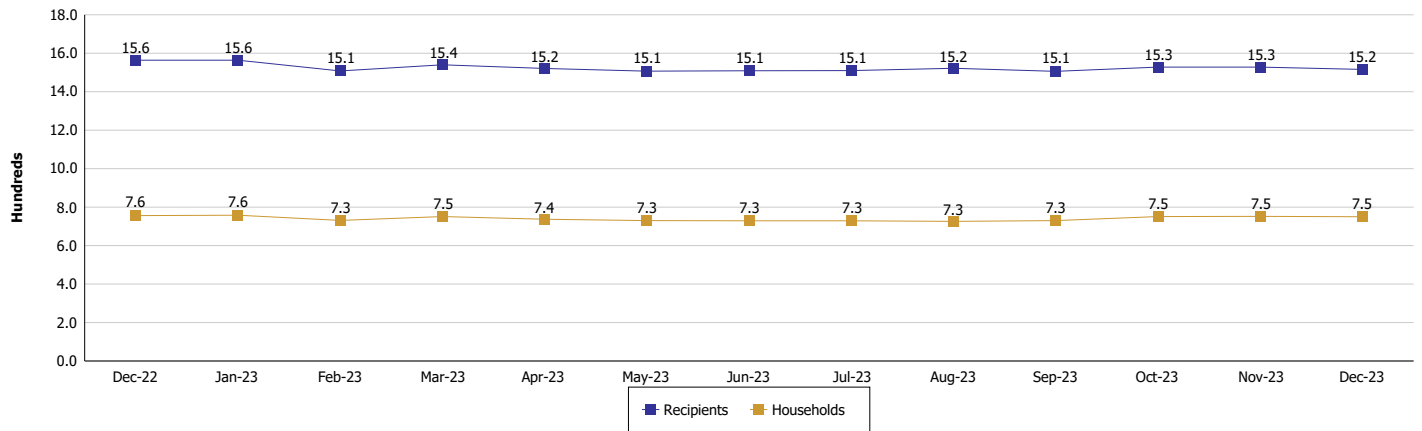
Location: Perry County

### SUPPLEMENTAL NUTRITION ASSISTANCE PROGRAM (SNAP)

#### SNAP Issuance



#### SNAP Households and Recipients



**Note:**

Run Date: Jan 12, 2024



## DIVISION OF FAMILY RESOURCES

### Monthly Management Report

Reporting Month: December 2023

Location: Perry County

#### HIP 2.0 and SNAP

	December 2023	November 2023	December 2022	Annual Change
Total HIP 2.0 Members	1,839	1,863	2,052	-10.38%
HIP Members also SNAP Recipients	527	530	526	0.19%
Percentage HIP Members SNAP Recipients	28.7%	28.4%	25.6%	3.02
HIP Members SNAP ABAWDs	39	41	31	25.81%
Percentage HIP Members SNAP ABAWDs	2.1%	2.2%	1.5%	0.6





**DIVISION OF FAMILY RESOURCES**

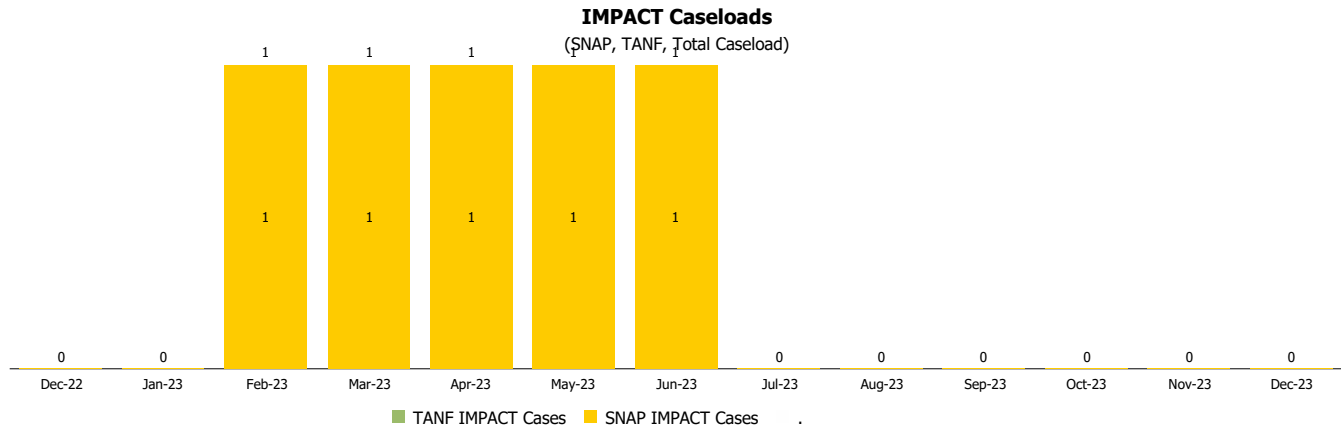
**Monthly Management Report**

Reporting Month: December 2023

Location: Perry County

**INDIANA MANPOWER PLACEMENT AND COMPREHENSIVE TRAINING (IMPACT)**

	December 2023	November 2023	December 2022	Annual Change
Number of IMPACT cases	0	0	0	
Number of TANF IMPACT adults	0	0	0	
Number of SNAP IMPACT Cases	0	0	0	
Total number of adults employed	1	4	12	-91.67%
Number of TANF IMPACT adults newly employed (within past 30 days)	0	0	0	
Number of SNAP IMPACT adults employed	1	4	12	-91.67%
Total number of adults ineligible due to employment	3	9	2	50.00%
Number of TANF adults ineligible due to employment	0	0	0	
Number of SNAP adults ineligible due to employment	3	9	2	50.00%



**Note:**

Effective January 2022, these numbers have been adjusted to reflect only those actually participating in IMPACT.