



DIVISION OF FAMILY RESOURCES

Parke County Monthly Management Report December 2023

State of Indiana

Eric Holcomb
Governor

Family and Social Services Administration

Dan Rusyniak, MD
Secretary

Division of Family Resources

Adrienne Shields
Director

For questions regarding data on this report contact:
office.Communications@fssa.IN.gov



State of Indiana

Published January 2024



DIVISION OF FAMILY RESOURCES

Monthly Management Report

Reporting Month: December 2023

Location: Parke County

TEMPORARY ASSISTANCE FOR NEEDY FAMILIES (TANF)

Child-Only and One-Parent Families	December 2023	November 2023	December 2022	Annual Change
Number of families receiving TANF Grants	17	16	15	13.33%
Total number of grant recipients	37	33	26	42.31%
Number of adult grant recipients	3	3	0	0%
Number of child grant recipients	34	30	26	30.77%
Total payments	\$3,793	\$3,444	\$2,730	38.94%
Average payment per case	\$223.12	\$215.25	\$182.00	22.59%
Average payment per recipient	\$102.51	\$104.36	\$105.00	-2.37%
Number of cases with benefits reduced to zero	0	0	0	0%
Number of recipients with benefits reduced to zero	0	0	0	0%
Number of adult recipients with benefit reduced to zero	0	0	0	0%
Number of child recipients with benefit reduced to zero	0	0	0	0%

Two-Parent Families	December 2023	November 2023	December 2022	Annual Change
Number of families receiving TANF Grants	1	2	0	0%
Total number of grant recipients	3	7	0	0%
Number of adult grant recipients	2	4	0	0%
Number of child grant recipients	1	3	0	0%
Total payments	\$288	\$705	\$0	0%
Average payment per case	\$288.00	\$352.50	\$0.00	0.00%
Average payment per recipient	\$96.00	\$100.71	\$0.00	0.00%
Number of cases with benefits reduced to zero	0	0	0	0%
Number of recipients with benefits reduced to zero	0	0	0	0%
Number of adult recipients with benefit reduced to zero	0	0	0	0%
Number of child recipients with benefit reduced to zero	0	0	0	0%

Note:

For August 2021, a one time payment of \$400 per recipient was included in the Total payments and Average payments. TANF section rules changed to reflect Federal reporting logic effective September 2021. For August 2022, a one-time payment of \$269 per recipient was included in the Total payments and Average payments.

Source:



DIVISION OF FAMILY RESOURCES

Monthly Management Report

Reporting Month: December 2023

Location: Parke County

TANF - APPLICATIONS

	December 2023	November 2023	December 2022	Annual Change
Number of Applications	4	13	10	-60.00%

TANF - RECIPIENTS BY ZIP CODE

ZIP Code	Households	Recipients
47832	2	6
47859	1	2
47862	2	2
47872	8	14
47874	1	3
47952	1	4
47989	1	3
None	2	6
Total	18	40



DIVISION OF FAMILY RESOURCES

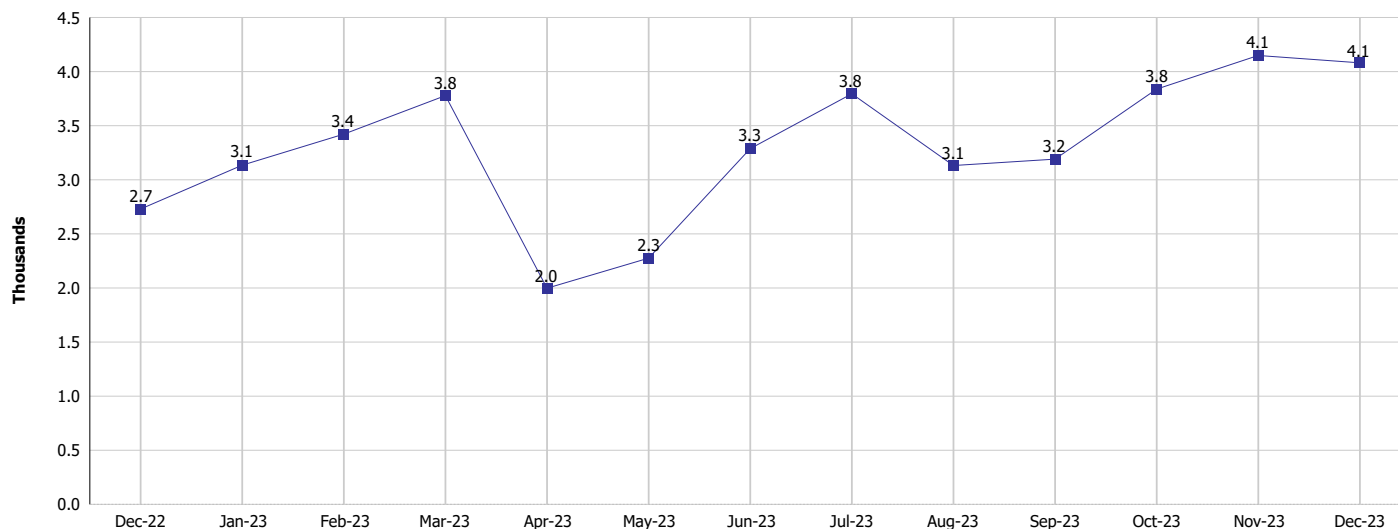
Monthly Management Report

Reporting Month: December 2023

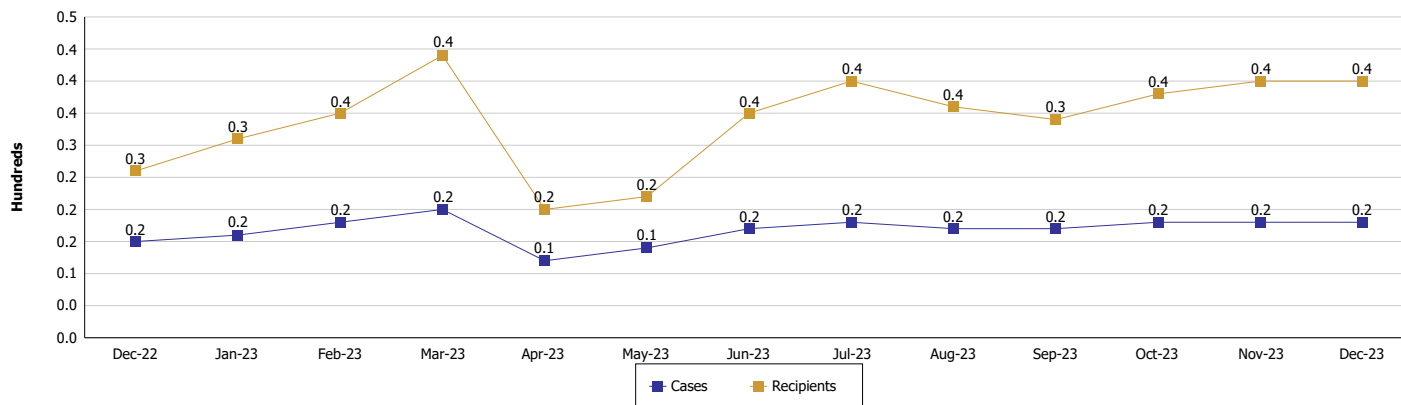
Location: Parke County

TEMPORARY ASSISTANCE FOR NEEDY FAMILIES (TANF)

TANF Regular And TANF Two-Parent Cash Assistance



TANF Cases and Recipients (TANF Regular and TANF Two-Parent)



Note:

For August 2021, a one time payment of \$400 per recipient was included in the Total payments and Average payments. TANF section rules changed to reflect Federal reporting logic effective September 2021. For August 2022, a one-time payment of \$269 per recipient was included in the Total payments and Average payments.



DIVISION OF FAMILY RESOURCES

Monthly Management Report

Reporting Month: December 2023

Location: Parke County

SUPPLEMENTAL NUTRITION ASSISTANCE PROGRAM (SNAP)

	December 2023	November 2023	December 2022	Annual Change
Total issuance	\$309,558	\$308,349	\$289,564	6.9%
Number of households receiving SNAP benefits	760	759	736	3.26%
Number of recipients	1,640	1,640	1,602	2.37%
Average issuance per household	\$407.31	\$406.26	\$393.43	3.53%
Average issuance per recipient	\$188.75	\$188.02	\$180.75	4.43%
Number of Applications	63	81	54	16.67%



DIVISION OF FAMILY RESOURCES

Monthly Management Report

Reporting Month: December 2023

Location: Parke County

SNAP - RECIPIENTS BY ZIP CODE

ZIP Code	Households	Recipients
46175	1	4
46201	1	2
46226	1	1
46234	1	1
46236	1	1
46250	1	1
46806	2	3
47150	1	1
47250	1	5
47304	1	1
47803	1	3
47805	1	5
47832	36	88
47834	16	57
47836	2	6
47837	20	53
47842	1	1
47854	1	1
47857	1	4
47859	26	49
47860	17	36
47862	119	276
47872	365	753
47874	85	166
47952	41	78
47989	3	11
None	14	33
Totals	760	1,640



DIVISION OF FAMILY RESOURCES

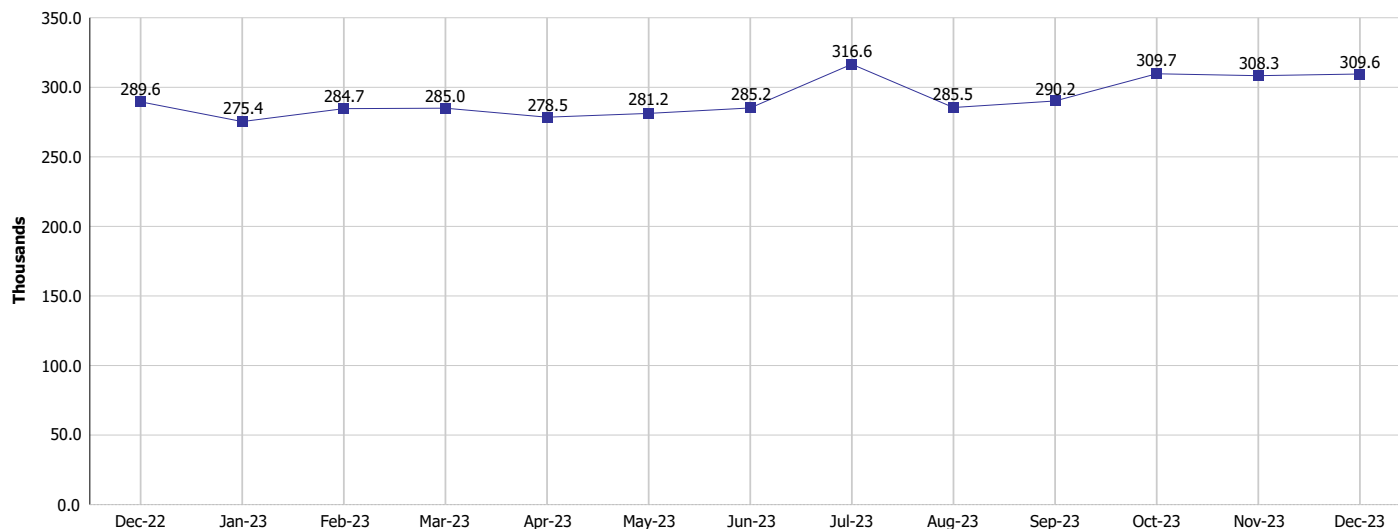
Monthly Management Report

Reporting Month: December 2023

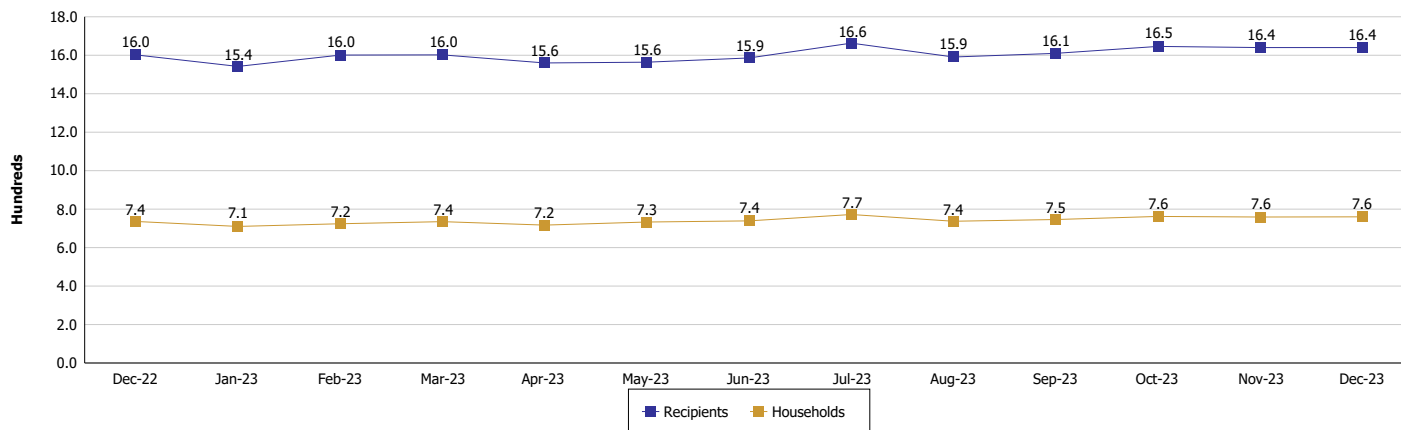
Location: Parke County

SUPPLEMENTAL NUTRITION ASSISTANCE PROGRAM (SNAP)

SNAP Issuance



SNAP Households and Recipients



Note:

Run Date: Jan 12, 2024



DIVISION OF FAMILY RESOURCES

Monthly Management Report

Reporting Month: December 2023

Location: Parke County

HIP 2.0 and SNAP

	December 2023	November 2023	December 2022	Annual Change
Total HIP 2.0 Members	2,021	2,050	2,046	-1.22%
HIP Members also SNAP Recipients	574	578	541	6.10%
Percentage HIP Members SNAP Recipients	28.4%	28.2%	26.4%	1.96
HIP Members SNAP ABAWDs	35	28	29	20.69%
Percentage HIP Members SNAP ABAWDs	1.7%	1.4%	1.4%	0.3



DIVISION OF FAMILY RESOURCES

Monthly Management Report

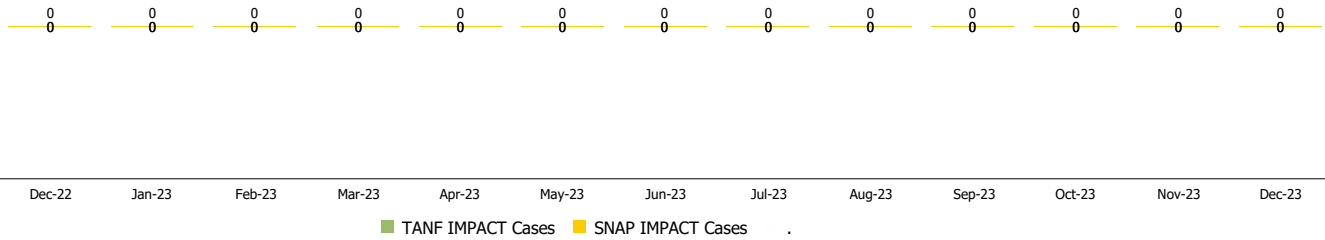
Reporting Month: December 2023

Location: Parke County

INDIANA MANPOWER PLACEMENT AND COMPREHENSIVE TRAINING (IMPACT)

	December 2023	November 2023	December 2022	Annual Change
Number of IMPACT cases	0	0	0	
Number of TANF IMPACT adults	0	0	0	
Number of SNAP IMPACT Cases	0	0	0	
Total number of adults employed	4	3	5	-20.00%
Number of TANF IMPACT adults newly employed (within past 30 days)	0	0	0	
Number of SNAP IMPACT adults employed	4	3	5	-20.00%
Total number of adults ineligible due to employment	2	1	2	0.00%
Number of TANF adults ineligible due to employment	0	0	0	
Number of SNAP adults ineligible due to employment	2	1	2	0.00%

IMPACT Caseloads
(SNAP, TANF, Total Caseload)



Note:

Effective January 2022, these numbers have been adjusted to reflect only those actually participating in IMPACT.