



## DIVISION OF FAMILY RESOURCES

# Noble County Monthly Management Report July 2021

### State of Indiana

Eric Holcomb  
Governor

### Family and Social Services Administration

Jennifer Sullivan, M.D.  
Secretary

### Division of Family Resources

Adrienne Shields  
Director

For questions regarding data on this report contact:  
[office.Communications@fssa.IN.gov](mailto:office.Communications@fssa.IN.gov)



## State of Indiana

Published August 2021



## DIVISION OF FAMILY RESOURCES

### Monthly Management Report

Reporting Month: July 2021

Location: Noble County

#### TEMPORARY ASSISTANCE FOR NEEDY FAMILIES (TANF)

Child-Only and One-Parent Families	Jul 31, 2021	June 2021	July 2020	Annual Change
Number of families receiving TANF Grants	17	15	18	-5.56%
Total number of grant recipients	36	33	39	-7.69%
Number of adult grant recipients	8	7	5	60.00%
Number of child grant recipients	28	26	34	-17.65%
Total payments	\$3,359	\$2,991	\$3,711	-9.49%
Average payment per case	\$197.59	\$199.40	\$206.17	-4.16%
Average payment per recipient	\$93.31	\$90.64	\$95.15	-1.94%
Number of cases with benefits reduced to zero	0	0	2	-100.00%
Number of recipients with benefits reduced to zero	0	0	6	-100.00%
Number of adult recipients with benefit reduced to zero	0	0	1	-100.00%
Number of child recipients with benefit reduced to zero	0	0	5	-100.00%

Two-Parent Families	Jul 31, 2021	June 2021	July 2020	Annual Change
Number of families receiving TANF Grants	4	3	2	100.00%
Total number of grant recipients	13	8	5	160.00%
Number of adult grant recipients	4	4	3	33.33%
Number of child grant recipients	9	4	2	350.00%
Total payments	\$833	\$537	\$517	61.12%
Average payment per case	\$208.25	\$179.00	\$258.50	-19.44%
Average payment per recipient	\$64.08	\$67.12	\$103.40	-38.03%
Number of cases with benefits reduced to zero	0	0	0	0%
Number of recipients with benefits reduced to zero	0	0	0	0%
Number of adult recipients with benefit reduced to zero	0	0	0	0%
Number of child recipients with benefit reduced to zero	0	0	0	0%

**Note:**

All data July 2014 and following will be broken out according to the new DFR region structure effective July 1 2014.

Source:



## DIVISION OF FAMILY RESOURCES

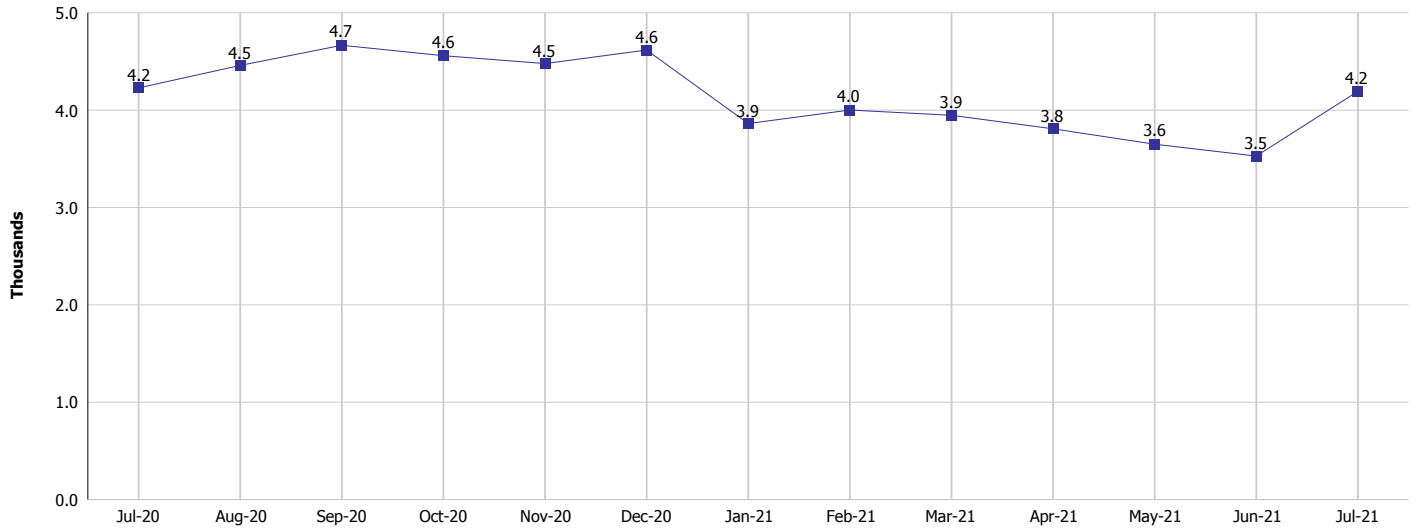
### Monthly Management Report

Reporting Month: July 2021

Location: Noble County

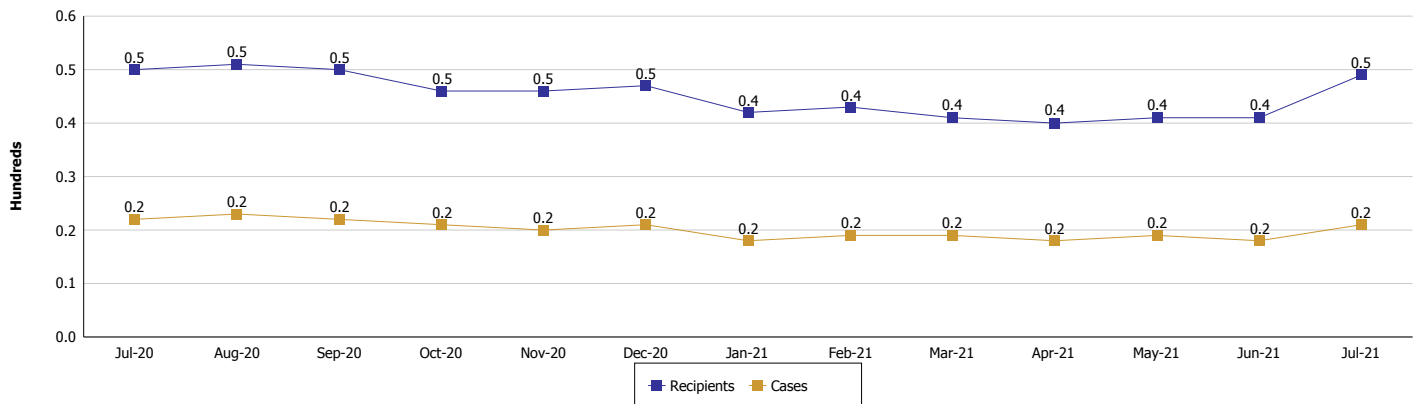
#### TEMPORARY ASSISTANCE FOR NEEDY FAMILIES (TANF)

#### TANF Regular And TANF Two-Parent Cash Assistance



#### TANF Cases and Recipients

(TANF Regular and TANF Two-Parent)



**Note:**

All data July 2014 and following will be broken out according to the new DFR region structure effective July 1 2014.



## DIVISION OF FAMILY RESOURCES

### Monthly Management Report

Reporting Month: July 2021

Location: Noble County

#### SUPPLEMENTAL NUTRITION ASSISTANCE PROGRAM (SNAP)

	July 2021	June 2021	July 2020	Annual Change
Total issuance	\$532,744	\$537,299	\$450,434	18.27%
Number of households receiving SNAP benefits	1,082	1,091	1,140	-5.09%
Number of recipients	2,371	2,390	2,567	-7.64%
Average issuance per household	\$492.37	\$492.48	\$395.12	24.61%
Average issuance per recipient	\$224.69	\$224.81	\$175.47	28.05%

**Note:**

All data July 2014 and following will be broken out according to the new DFR region structure effective July 1 2014.



## DIVISION OF FAMILY RESOURCES

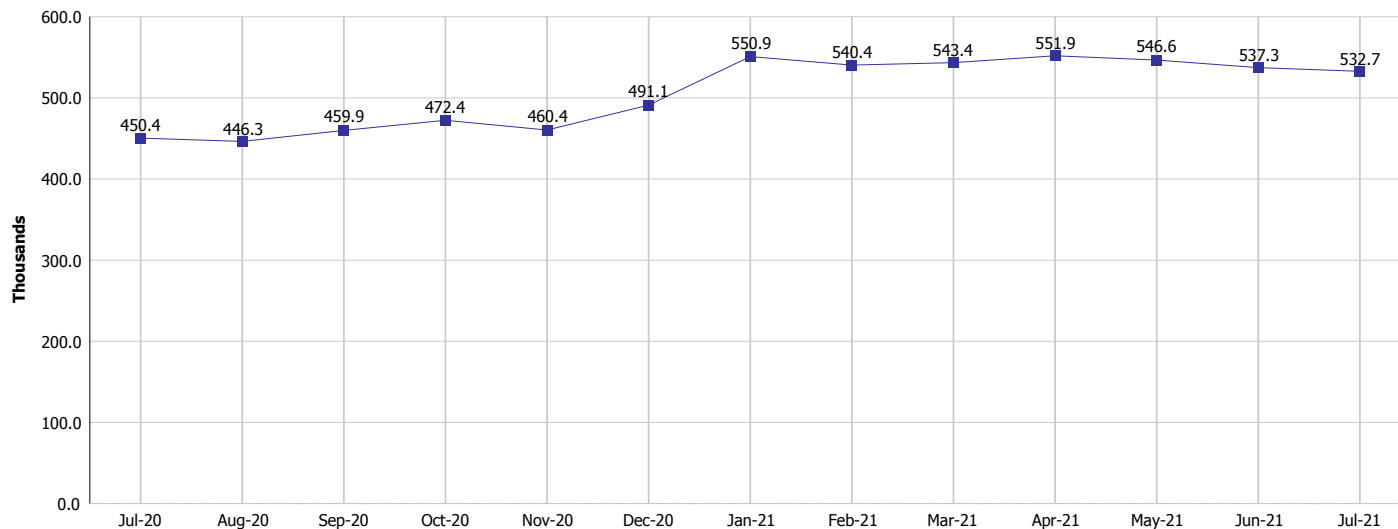
### Monthly Management Report

Reporting Month: July 2021

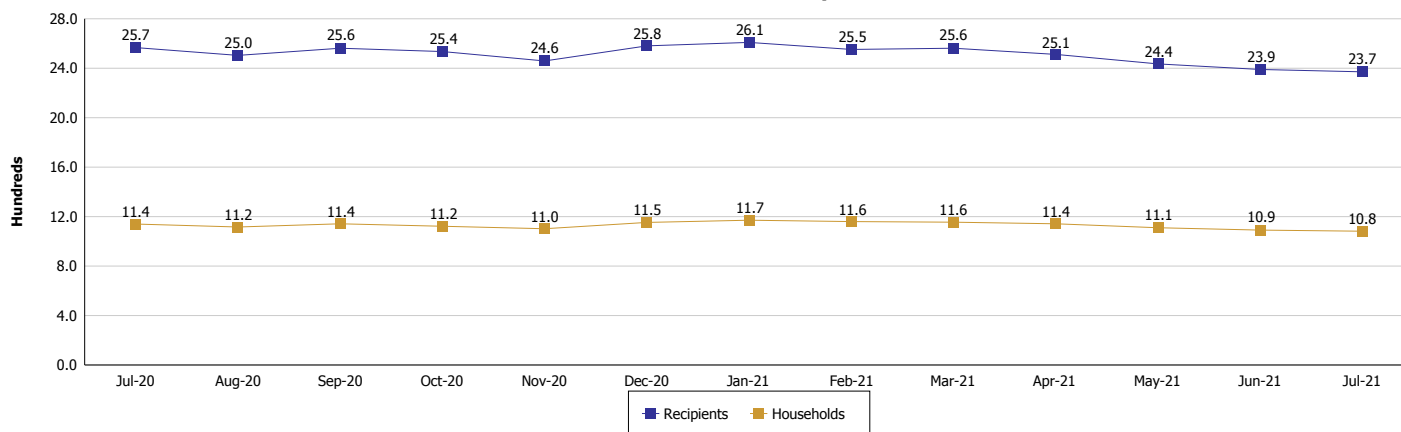
Location: Noble County

#### SUPPLEMENTAL NUTRITION ASSISTANCE PROGRAM (SNAP)

#### SNAP Issuance



#### SNAP Households and Recipients



#### Note:

All data July 2014 and following will be broken out according to the new DFR region structure effective July 1 2021.



## DIVISION OF FAMILY RESOURCES

### Monthly Management Report

Reporting Month: July 2021

Location: Noble County

#### HIP 2.0 and SNAP

	July 2021	June 2021	July 2020	Annual Change
Total HIP 2.0 Members	3,607	3,558	2,660	35.60%
HIP Members also SNAP Recipients	621	639	640	-2.97%
Percentage HIP Members SNAP Recipients	17.2%	18.0%	24.1%	-6.84
HIP Members SNAP ABAWDs	0	0	4	-100.00%
Percentage HIP Members SNAP ABAWDs	0	0	0.2%	-0.2

**Note:**

All data July 2014 and following will be broken out according to the new DFR region structure effective July 1 2014.



## DIVISION OF FAMILY RESOURCES

### Monthly Management Report

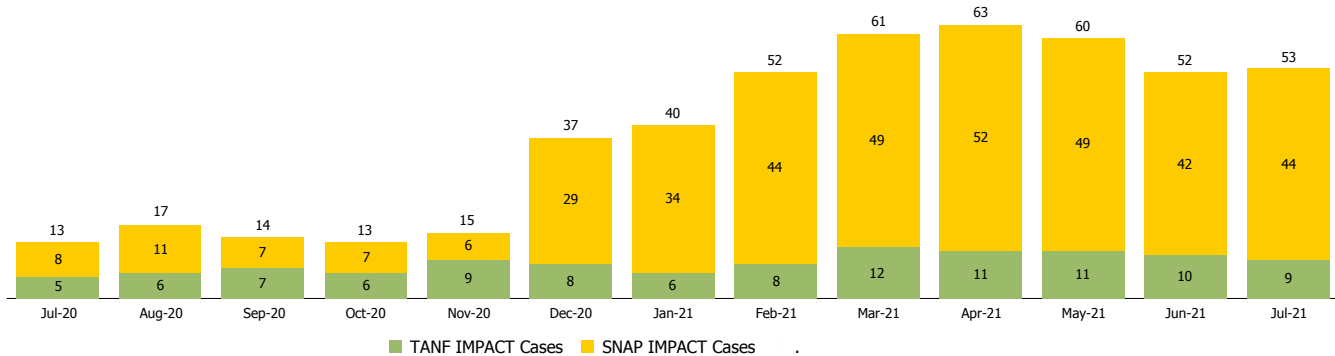
Reporting Month: July 2021

Location: Noble County

#### INDIANA MANPOWER PLACEMENT AND COMPREHENSIVE TRAINING (IMPACT)

	July 2021	June 2021	July 2020	Annual Change
Number of IMPACT cases	53	52	13	307.69%
Number of TANF IMPACT adults	9	10	5	80.00%
Number of SNAP IMPACT Cases	44	42	8	450.00%
Total number of adults employed	5	5	2	150.00%
Number of TANF IMPACT adults newly employed (within past 30 days)	0	0	0	
Number of SNAP IMPACT adults employed	5	5	2	150.00%
Total number of adults ineligible due to employment	20	7	45	-55.56%
Number of TANF adults ineligible due to employment	0	0	0	
Number of SNAP adults ineligible due to employment	20	7	45	-55.56%

**IMPACT Caseloads**  
(SNAP, TANF, Total Caseload)



**Note:**

All data July 2014 and following will be broken out according to the new DFR region structure effective July 1 2014.