



## DIVISION OF FAMILY RESOURCES

# Miami County Monthly Management Report July 2021

### State of Indiana

Eric Holcomb  
Governor

### Family and Social Services Administration

Jennifer Sullivan, M.D.  
Secretary

### Division of Family Resources

Adrienne Shields  
Director

For questions regarding data on this report contact:  
[office.Communications@fssa.IN.gov](mailto:office.Communications@fssa.IN.gov)



## State of Indiana

Published August 2021



## DIVISION OF FAMILY RESOURCES

### Monthly Management Report

Reporting Month: July 2021

Location: Miami County

#### TEMPORARY ASSISTANCE FOR NEEDY FAMILIES (TANF)

Child-Only and One-Parent Families	Jul 31, 2021	June 2021	July 2020	Annual Change
Number of families receiving TANF Grants	29	31	35	-17.14%
Total number of grant recipients	64	65	66	-3.03%
Number of adult grant recipients	13	15	10	30.00%
Number of child grant recipients	51	50	56	-8.93%
Total payments	\$6,063	\$6,296	\$6,638	-8.66%
Average payment per case	\$209.07	\$203.10	\$189.66	10.24%
Average payment per recipient	\$94.73	\$96.86	\$100.58	-5.81%
Number of cases with benefits reduced to zero	2	2	4	-50.00%
Number of recipients with benefits reduced to zero	4	4	9	-55.56%
Number of adult recipients with benefit reduced to zero	2	2	3	-33.33%
Number of child recipients with benefit reduced to zero	2	2	6	-66.67%

Two-Parent Families	Jul 31, 2021	June 2021	July 2020	Annual Change
Number of families receiving TANF Grants	12	13	1	1,100.00%
Total number of grant recipients	29	33	2	1,350.00%
Number of adult grant recipients	10	11	1	900.00%
Number of child grant recipients	19	22	1	1,800.00%
Total payments	\$2,827	\$2,993	\$229	1,134.50%
Average payment per case	\$235.58	\$230.23	\$229.00	2.87%
Average payment per recipient	\$97.48	\$90.70	\$114.50	-14.86%
Number of cases with benefits reduced to zero	0	0	0	0%
Number of recipients with benefits reduced to zero	0	0	0	0%
Number of adult recipients with benefit reduced to zero	0	0	0	0%
Number of child recipients with benefit reduced to zero	0	0	0	0%

**Note:**

All data July 2014 and following will be broken out according to the new DFR region structure effective July 1 2014.

Source:



# DIVISION OF FAMILY RESOURCES

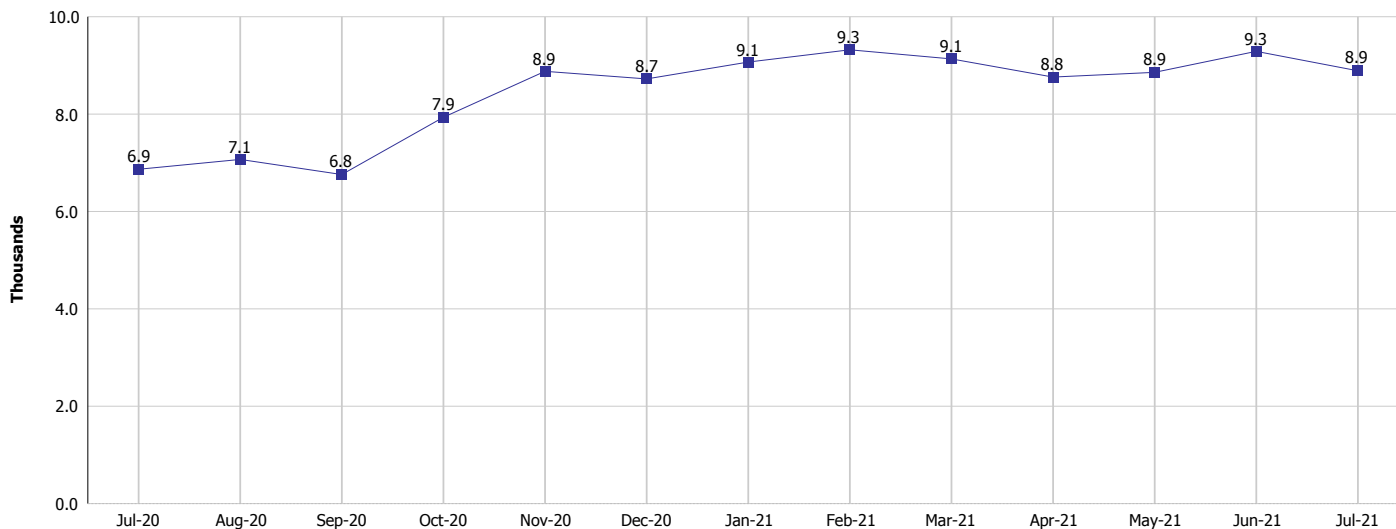
## Monthly Management Report

Reporting Month: July 2021

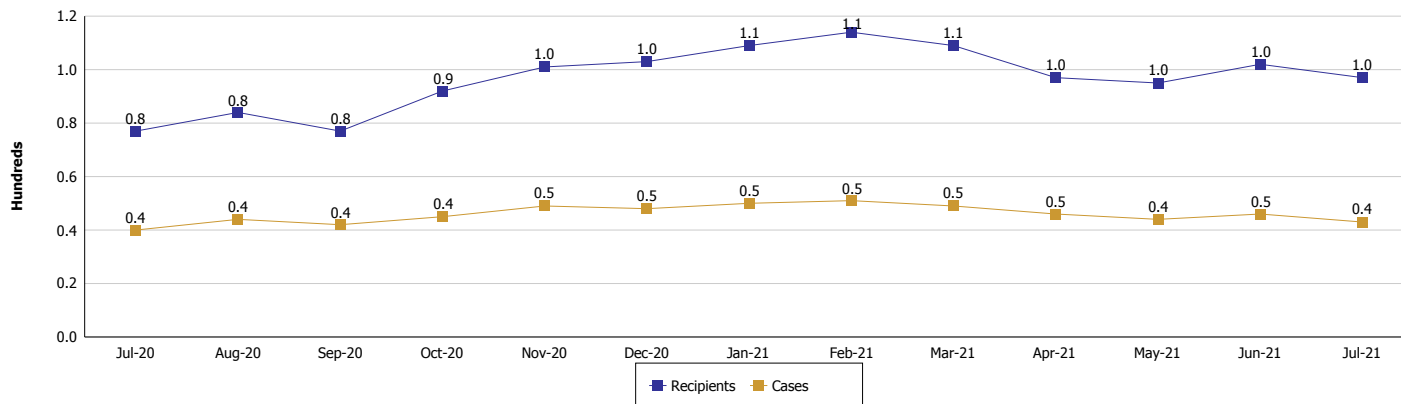
Location: Miami County

### TEMPORARY ASSISTANCE FOR NEEDY FAMILIES (TANF)

#### TANF Regular And TANF Two-Parent Cash Assistance



#### TANF Cases and Recipients (TANF Regular and TANF Two-Parent)



**Note:**

All data July 2014 and following will be broken out according to the new DFR region structure effective July 1 2014.



## DIVISION OF FAMILY RESOURCES

### Monthly Management Report

Reporting Month: July 2021

Location: Miami County

#### SUPPLEMENTAL NUTRITION ASSISTANCE PROGRAM (SNAP)

	July 2021	June 2021	July 2020	Annual Change
Total issuance	\$909,449	\$919,131	\$673,739	34.99%
Number of households receiving SNAP benefits	1,763	1,778	1,699	3.77%
Number of recipients	4,032	4,091	3,850	4.73%
Average issuance per household	\$515.85	\$516.95	\$396.55	30.08%
Average issuance per recipient	\$225.56	\$224.67	\$175	28.89%

**Note:**

All data July 2014 and following will be broken out according to the new DFR region structure effective July 1 2014.



# DIVISION OF FAMILY RESOURCES

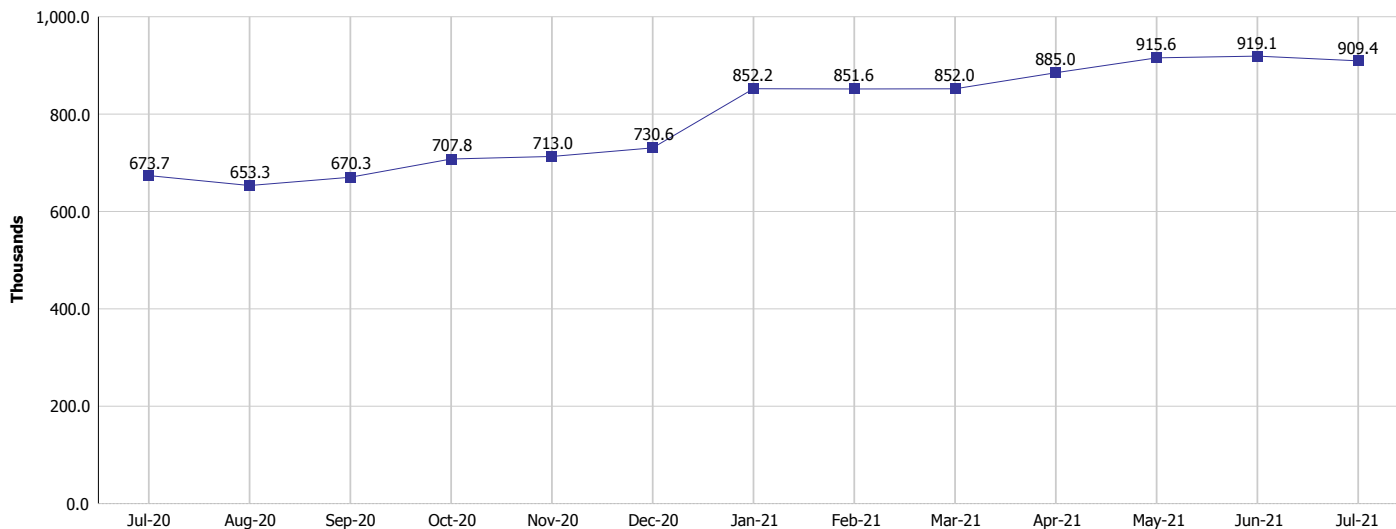
## Monthly Management Report

Reporting Month: July 2021

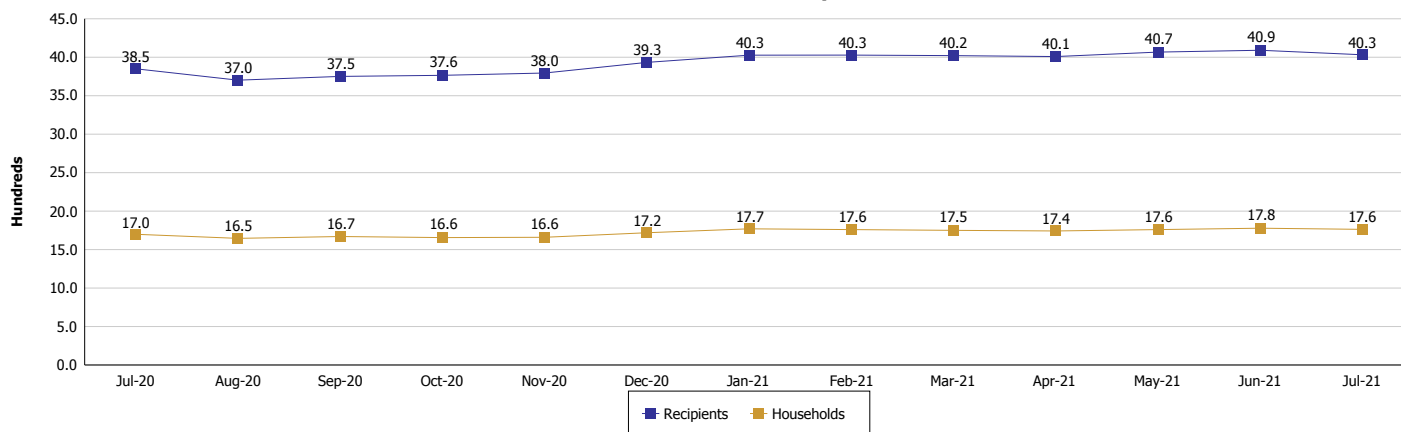
Location: Miami County

### SUPPLEMENTAL NUTRITION ASSISTANCE PROGRAM (SNAP)

#### SNAP Issuance



#### SNAP Households and Recipients



#### Note:

All data July 2014 and following will be broken out according to the new DFR region structure effective July 1 2021.



## DIVISION OF FAMILY RESOURCES

### Monthly Management Report

Reporting Month: July 2021

Location: Miami County

#### HIP 2.0 and SNAP

	July 2021	June 2021	July 2020	Annual Change
Total HIP 2.0 Members	3,806	3,770	2,888	31.79%
HIP Members also SNAP Recipients	1,305	1,309	1,115	17.04%
Percentage HIP Members SNAP Recipients	34.3%	34.7%	38.6%	-4.32
HIP Members SNAP ABAWDs	0	0	7	-100.00%
Percentage HIP Members SNAP ABAWDs	0	0	0.2%	-0.2

**Note:**

All data July 2014 and following will be broken out according to the new DFR region structure effective July 1 2014.



## DIVISION OF FAMILY RESOURCES

### Monthly Management Report

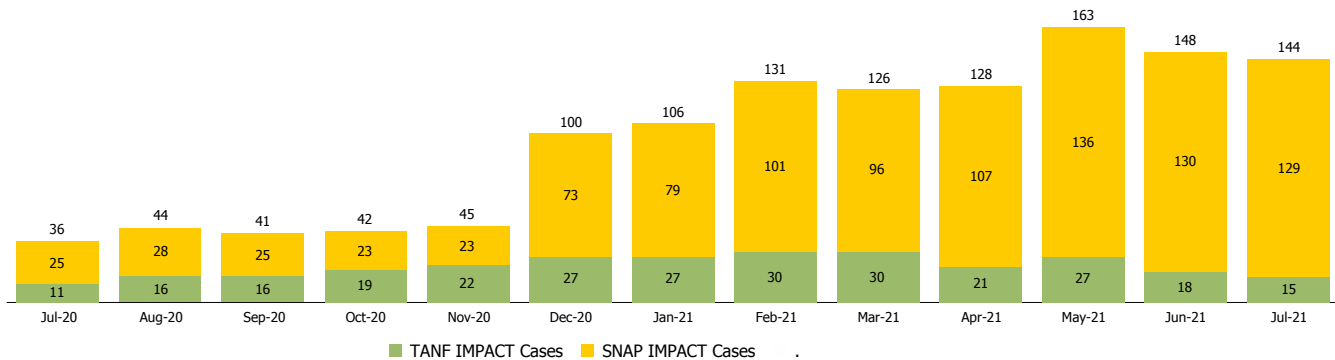
Reporting Month: July 2021

Location: Miami County

#### INDIANA MANPOWER PLACEMENT AND COMPREHENSIVE TRAINING (IMPACT)

	July 2021	June 2021	July 2020	Annual Change
Number of IMPACT cases	144	148	36	300.00%
Number of TANF IMPACT adults	15	18	11	36.36%
Number of SNAP IMPACT Cases	129	130	25	416.00%
Total number of adults employed	13	16	2	550.00%
Number of TANF IMPACT adults newly employed (within past 30 days)	0	2	0	
Number of SNAP IMPACT adults employed	13	14	2	550.00%
Total number of adults ineligible due to employment	7	14	65	-89.23%
Number of TANF adults ineligible due to employment	0	0	0	
Number of SNAP adults ineligible due to employment	7	14	65	-89.23%

**IMPACT Caseloads**  
(SNAP, TANF, Total Caseload)



**Note:**

All data July 2014 and following will be broken out according to the new DFR region structure effective July 1 2014.