



DIVISION OF FAMILY RESOURCES

Marion County Monthly Management Report October 2025

State of Indiana

Mike Braun
Governor

Family and Social Services Administration

Mitch Roob
Secretary

Division of Family Resources

Sunshine Beam
Director

For questions regarding data on this report contact:
office.Communications@fssa.IN.gov



State of Indiana

Published November 2025



DIVISION OF FAMILY RESOURCES

Monthly Management Report

Reporting Month: October 2025

Location: Marion County

TEMPORARY ASSISTANCE FOR NEEDY FAMILIES (TANF)

Child-Only and One-Parent Families	October 2025	September 2025	October 2024	Annual Change
Number of families receiving TANF Grants	1,230	1,211	1,436	-14.35%
Total number of grant recipients	3,116	3,020	3,512	-11.28%
Number of adult grant recipients	639	620	809	-21.01%
Number of child grant recipients	2,477	2,400	2,703	-8.36%
Total payments	\$522,330	\$509,938	\$592,452	-11.84%
Average payment per case	\$424.66	\$421.09	\$412.57	2.93%
Average payment per recipient	\$167.63	\$168.85	\$168.69	-0.63%
Number of cases with benefits reduced to zero	33	26	33	0.00%
Number of recipients with benefits reduced to zero	75	50	69	8.70%
Number of adult recipients with benefit reduced to zero	11	8	9	22.22%
Number of child recipients with benefit reduced to zero	64	42	60	6.67%

Pregnancy TANF Families	October 2025	September 2025	October 2024	Annual Change
Number of families receiving TANF Grants	35	40	35	0.00%
Total number of grant recipients	35	40	35	0.00%
Total payments	\$8,580.00	\$9,914.00	\$8,705.00	-1.44%
Average payment per case	\$245.14	\$247.85	\$248.71	-1.44%
Average payment per recipient	\$245.14	\$247.85	\$248.71	-1.44%
Number of cases with benefits reduced to zero	0	0	1	-100.00%
Number of recipients with benefits reduced to zero	0	0	1	-100.00%



DIVISION OF FAMILY RESOURCES

Monthly Management Report

Two-Parent Families	October 2025	September 2025	October 2024	Annual Change
Number of families receiving TANF Grants	57	63	358	-84.08%
Total number of grant recipients	254	278	1,348	-81.16%
Number of adult grant recipients	115	127	714	-83.89%
Number of child grant recipients	139	151	634	-78.08%
Total payments	\$31,189	\$37,214	\$198,145	-84.26%
Average payment per case	\$547.18	\$590.70	\$553.48	-1.14%
Average payment per recipient	\$122.79	\$133.86	\$146.99	-16.46%
Number of cases with benefits reduced to zero	0	0	2	-100.00%
Number of recipients with benefits reduced to zero	0	0	7	-100.00%
Number of adult recipients with benefit reduced to zero	0	0	4	-100.00%
Number of child recipients with benefit reduced to zero	0	0	3	-100.00%

Note: The two-parent case count includes cases in which a parent living in the home is excluded from receiving TANF benefits but whose income is used in the TANF eligibility determination.



DIVISION OF FAMILY RESOURCES

Monthly Management Report

Reporting Month: October 2025

Location: Marion County

TANF - APPLICATIONS

	October 2025	September 2025	October 2024	Annual Change
Number of Applications	1,235	1,613	2,422	-49.01%

TANF - RECIPIENTS BY ZIP CODE

ZIP Code	Households	Recipients	ZIP Code	Households	Recipients
46107	10	26	Total	1,287	3,370
46113	3	4			
46201	84	247			
46202	38	96			
46203	67	185			
46204	6	16			
46205	57	169			
46208	53	148			
46214	23	58			
46216	2	5			
46217	23	74			
46218	106	277			
46219	55	133			
46220	16	38			
46221	24	51			
46222	87	242			
46224	45	99			
46225	7	21			
46226	74	168			
46227	81	220			
46228	23	80			
46229	56	158			
46231	4	10			
46234	12	33			
46235	77	190			
46236	8	22			
46237	18	47			
46239	20	59			
46240	11	33			
46241	68	148			
46250	5	13			
46254	49	126			
46256	8	12			
46259	1	1			
46260	36	86			
46268	27	69			
46278	3	6			



DIVISION OF FAMILY RESOURCES

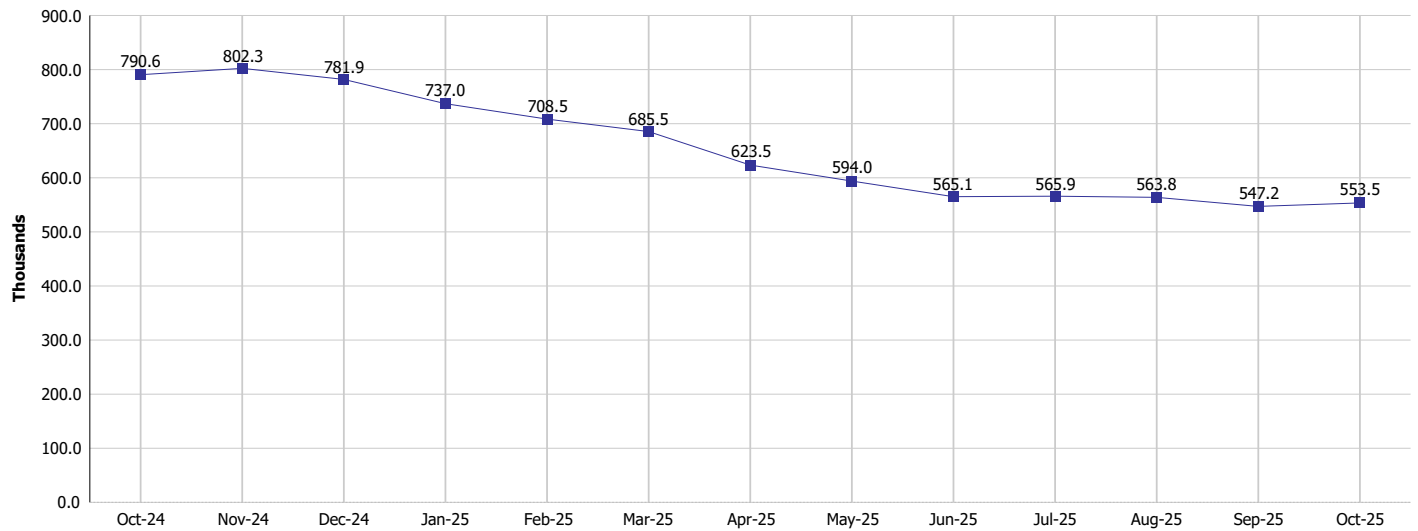
Monthly Management Report

Reporting Month: October 2025

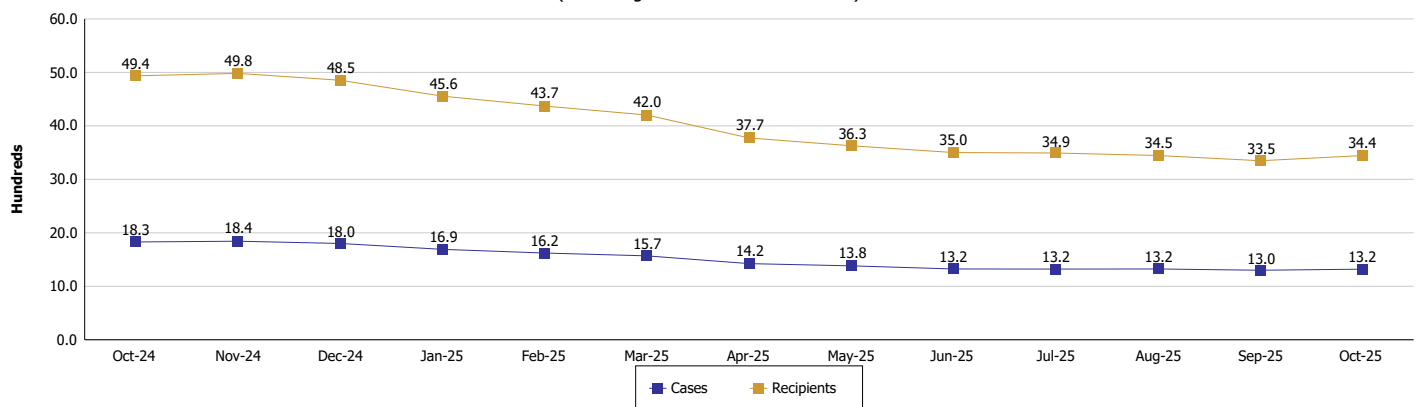
Location: Marion County

TEMPORARY ASSISTANCE FOR NEEDY FAMILIES (TANF)

TANF Regular And TANF Two-Parent Cash Assistance



TANF Cases and Recipients
(TANF Regular and TANF Two-Parent)





DIVISION OF FAMILY RESOURCES

Monthly Management Report

Reporting Month: October 2025

Location: Marion County

SUPPLEMENTAL NUTRITION ASSISTANCE PROGRAM (SNAP)

	October 2025	September 2025	October 2024	Annual Change
Total issuance	\$25,327,802	\$25,092,428	\$29,294,187	-13.54%
Number of households receiving SNAP benefits	58,234	58,634	65,426	-10.99%
Number of recipients	121,826	122,858	138,158	-11.82%
Average issuance per household	\$434.93	\$427.95	\$447.75	-2.86%
Average issuance per recipient	\$207.9	\$204.24	\$212.03	-1.95%
Number of Applications	7,270	8,660	10,904	-33.33%



DIVISION OF FAMILY RESOURCES

Monthly Management Report

Reporting Month: October 2025

Location: Marion County

SNAP - RECIPIENTS BY ZIP CODE

ZIP Code	Households	Recipients	ZIP Code	Households	Recipients	ZIP Code	Households	Recipients	ZIP Code	Households	Recipients
46012	2	2	46184	3	4	46307	2	4	47713	2	2
46013	1	1	46186	1	1	46312	4	8	47802	1	1
46016	2	4	46201	3,396	6,518	46320	1	1	47805	1	1
46017	1	1	46202	1,570	2,369	46352	1	1	47904	1	1
46032	4	9	46203	3,214	6,822	46368	1	2	47905	2	6
46033	1	3	46204	578	686	46373	1	2	47906	1	6
46034	1	2	46205	2,171	4,138	46383	1	1	47909	1	1
46036	2	4	46206	18	35	46402	3	7	47933	2	2
46037	4	9	46208	2,067	3,862	46403	1	1	47944	1	1
46038	4	4	46213	2	2	46408	1	1	None	44	103
46041	1	1	46214	1,280	2,815	46581	1	1	Totals	58,234	121,826
46044	1	6	46216	149	247	46613	2	3			
46055	2	3	46217	1,039	2,962	46614	1	1			
46060	4	9	46218	4,134	8,059	46615	1	1			
46062	2	6	46219	2,752	4,944	46701	1	1			
46064	1	1	46220	828	1,531	46703	1	2			
46068	1	1	46221	1,659	3,634	46725	1	1			
46072	1	1	46222	3,389	6,874	46803	1	1			
46074	3	5	46223	1	5	46806	3	7			
46075	2	6	46224	1,983	4,349	46807	1	3			
46077	3	4	46225	616	1,205	46816	2	2			
46107	687	1,312	46226	3,684	7,601	46901	3	6			
46111	1	1	46227	3,655	8,409	46947	1	1			
46112	2	6	46228	610	1,251	46952	1	3			
46113	301	828	46229	1,948	4,339	46953	2	10			
46118	2	2	46231	286	694	47129	1	1			
46120	1	1	46234	595	1,399	47130	2	2			
46121	1	1	46235	2,955	6,742	47150	2	2			
46122	3	10	46236	450	989	47170	1	1			
46123	5	13	46237	1,201	3,105	47201	2	8			
46126	1	1	46239	1,097	2,681	47203	2	6			
46131	6	7	46240	545	1,172	47240	3	5			
46135	1	1	46241	2,618	5,905	47274	1	1			
46140	7	14	46242	11	13	47302	2	7			
46142	6	14	46244	10	14	47362	3	3			
46143	18	43	46247	4	4	47374	3	3			
46151	4	4	46250	439	956	47385	1	1			
46158	3	3	46253	4	8	47396	1	1			
46161	1	1	46254	2,123	4,749	47401	2	2			
46163	3	10	46255	1	2	47403	2	5			
46166	1	4	46256	458	908	47404	3	7			
46167	1	1	46259	239	537	47408	2	3			
46168	12	23	46260	1,591	3,514	47433	2	3			
46176	8	18	46268	1,470	2,813	47441	1	1			
46181	2	2	46278	134	286	47462	1	1			
46183	3	10	46280	1	1	47542	1	2			



DIVISION OF FAMILY RESOURCES

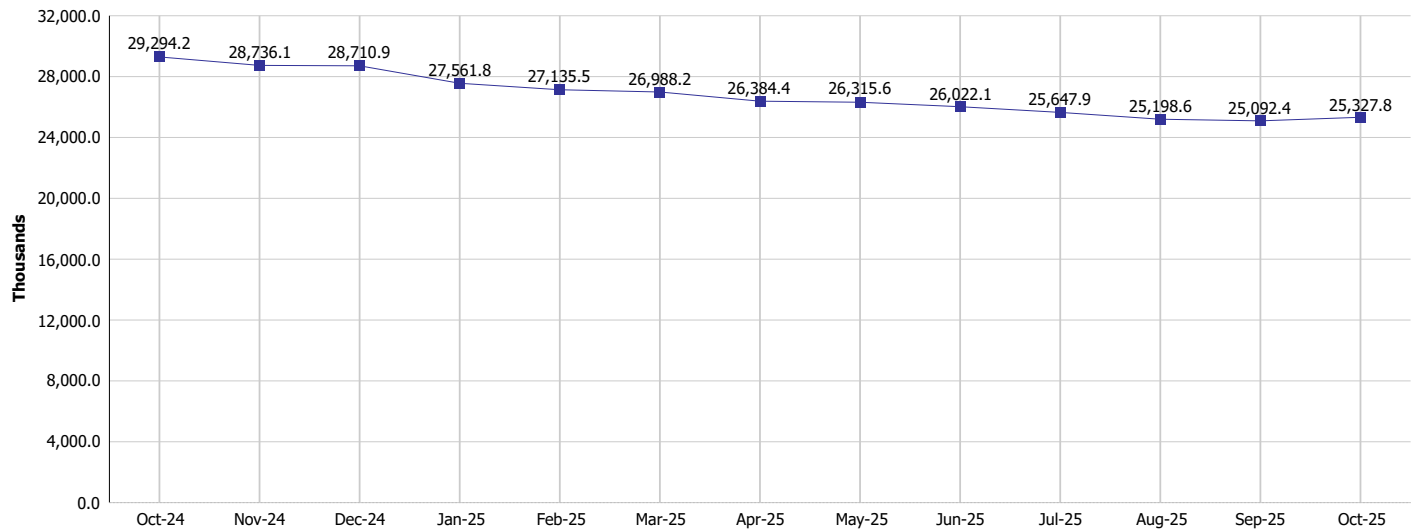
Monthly Management Report

Reporting Month: October 2025

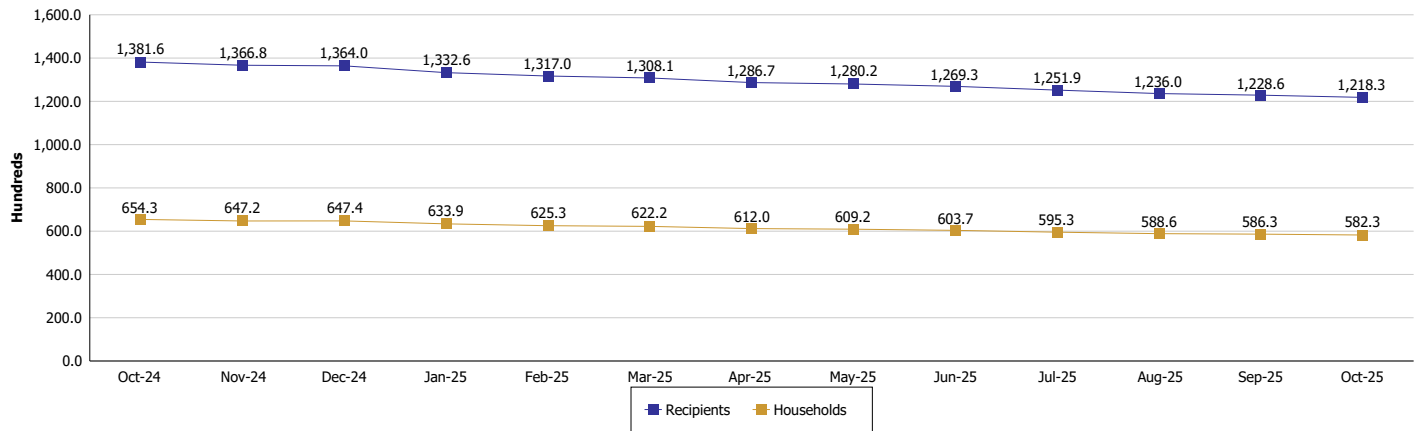
Location: Marion County

SUPPLEMENTAL NUTRITION ASSISTANCE PROGRAM (SNAP)

SNAP Issuance



SNAP Households and Recipients





DIVISION OF FAMILY RESOURCES

Monthly Management Report

Reporting Month: October 2025

Location: Marion County

HIP 2.0 and SNAP

	October 2025	September 2025	October 2024	Annual Change
Total HIP 2.0 Members	144,653	147,863	183,247	-21.06%
HIP Members also SNAP Recipients	33,996	34,150	38,964	-12.75%
Percentage HIP Members SNAP Recipients	23.5%	23.1%	21.3%	2.24
HIP Members SNAP ABAWDs	939	922	2,277	-58.76%
Percentage HIP Members SNAP ABAWDs	0.6%	0.6%	1.2%	-0.6



DIVISION OF FAMILY RESOURCES

Monthly Management Report

Reporting Month: October 2025

Location: Marion County

INDIANA MANPOWER PLACEMENT AND COMPREHENSIVE TRAINING (IMPACT)

	October 2025	September 2025	October 2024	Annual Change
Number of IMPACT cases	211	195	110	91.82%
Number of TANF IMPACT adults	76	70	36	111.11%
Number of SNAP IMPACT Cases	135	125	74	82.43%
Total number of adults employed	354	329	388	-8.76%
Number of TANF IMPACT adults newly employed (within past 30 days)	20	27	24	-16.67%
Number of SNAP IMPACT adults employed	334	302	364	-8.24%
Total number of adults ineligible due to employment	435	462	444	-2.03%
Number of TANF adults ineligible due to employment	24	19	33	-27.27%
Number of SNAP adults ineligible due to employment	411	443	411	0.00%

IMPACT Caseloads
(SNAP, TANF, Total Caseload)

