



DIVISION OF FAMILY RESOURCES

Laporte County Monthly Management Report July 2021

State of Indiana

Eric Holcomb
Governor

Family and Social Services Administration

Jennifer Sullivan, M.D.
Secretary

Division of Family Resources

Adrienne Shields
Director

For questions regarding data on this report contact:
office.Communications@fssa.IN.gov



State of Indiana

Published August 2021



DIVISION OF FAMILY RESOURCES

Monthly Management Report

Reporting Month: July 2021

Location: Laporte County

TEMPORARY ASSISTANCE FOR NEEDY FAMILIES (TANF)

Child-Only and One-Parent Families	Jul 31, 2021	June 2021	July 2020	Annual Change
Number of families receiving TANF Grants	121	118	127	-4.72%
Total number of grant recipients	292	285	301	-2.99%
Number of adult grant recipients	60	60	62	-3.23%
Number of child grant recipients	232	225	239	-2.93%
Total payments	\$26,382	\$26,073	\$26,590	-0.78%
Average payment per case	\$218.03	\$220.96	\$209.37	4.14%
Average payment per recipient	\$90.35	\$91.48	\$88.34	2.28%
Number of cases with benefits reduced to zero	9	7	7	28.57%
Number of recipients with benefits reduced to zero	18	17	20	-10.00%
Number of adult recipients with benefit reduced to zero	5	5	5	0.00%
Number of child recipients with benefit reduced to zero	13	12	15	-13.33%

Two-Parent Families	Jul 31, 2021	June 2021	July 2020	Annual Change
Number of families receiving TANF Grants	20	23	9	122.22%
Total number of grant recipients	61	69	29	110.34%
Number of adult grant recipients	18	24	13	38.46%
Number of child grant recipients	43	45	16	168.75%
Total payments	\$4,721	\$5,526	\$2,170	117.56%
Average payment per case	\$236.05	\$240.26	\$241.11	-2.10%
Average payment per recipient	\$77.39	\$80.09	\$74.83	3.43%
Number of cases with benefits reduced to zero	1	1	0	0%
Number of recipients with benefits reduced to zero	4	4	0	0%
Number of adult recipients with benefit reduced to zero	2	2	0	0%
Number of child recipients with benefit reduced to zero	2	2	0	0%

Note:

All data July 2014 and following will be broken out according to the new DFR region structure effective July 1 2014.

Source:



DIVISION OF FAMILY RESOURCES

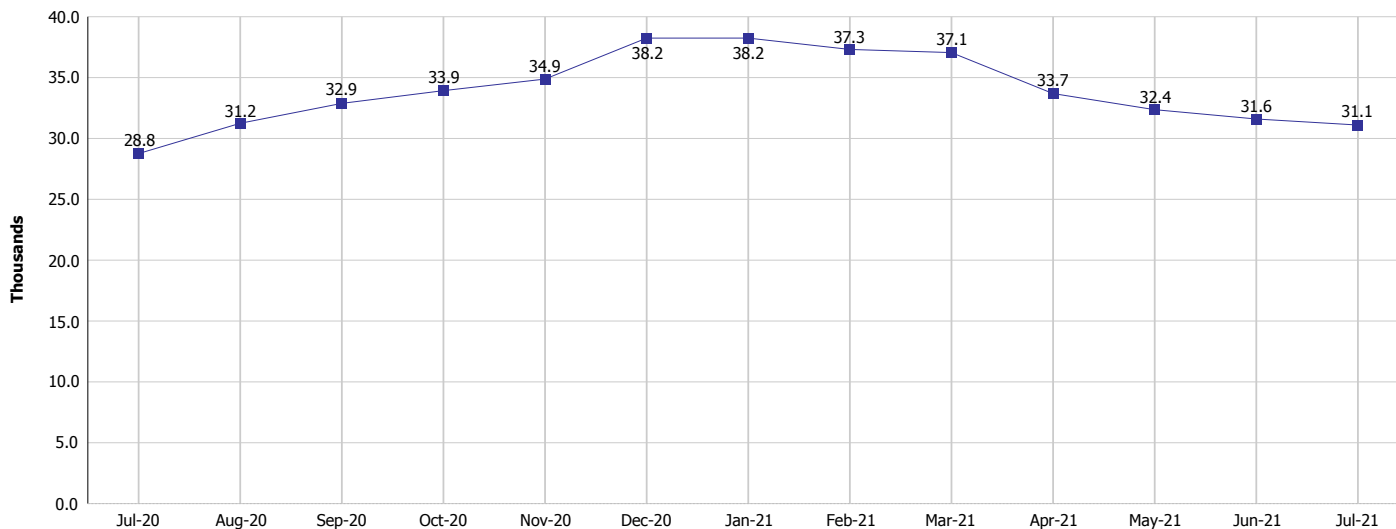
Monthly Management Report

Reporting Month: July 2021

Location: Laporte County

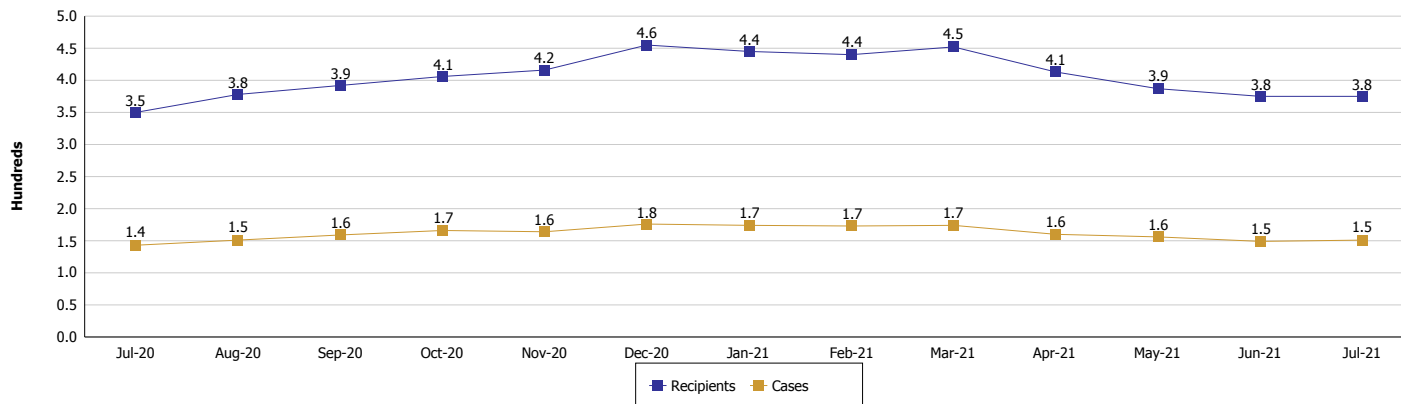
TEMPORARY ASSISTANCE FOR NEEDY FAMILIES (TANF)

TANF Regular And TANF Two-Parent Cash Assistance



TANF Cases and Recipients

(TANF Regular and TANF Two-Parent)



Note:

All data July 2014 and following will be broken out according to the new DFR region structure effective July 1 2014.



DIVISION OF FAMILY RESOURCES

Monthly Management Report

Reporting Month: July 2021

Location: Laporte County

SUPPLEMENTAL NUTRITION ASSISTANCE PROGRAM (SNAP)

	July 2021	June 2021	July 2020	Annual Change
Total issuance	\$2,967,173	\$3,076,856	\$2,373,909	24.99%
Number of households receiving SNAP benefits	5,921	6,177	6,176	-4.13%
Number of recipients	13,008	13,609	13,591	-4.29%
Average issuance per household	\$501.13	\$498.11	\$384.38	30.37%
Average issuance per recipient	\$228.1	\$226.09	\$174.67	30.59%

Note:

All data July 2014 and following will be broken out according to the new DFR region structure effective July 1 2014.



DIVISION OF FAMILY RESOURCES

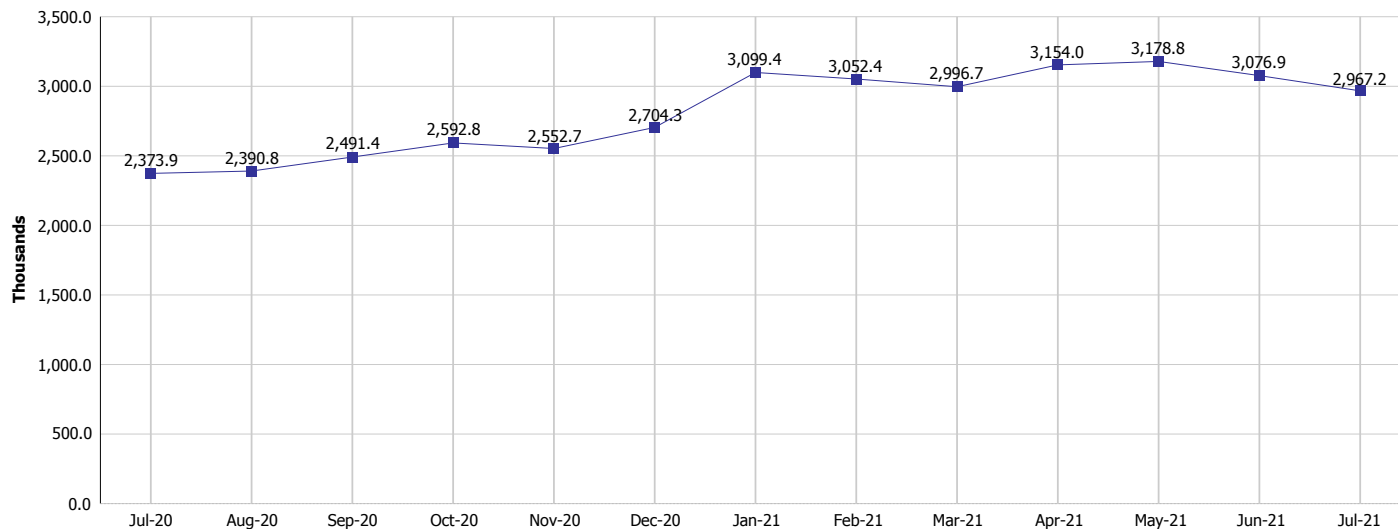
Monthly Management Report

Reporting Month: July 2021

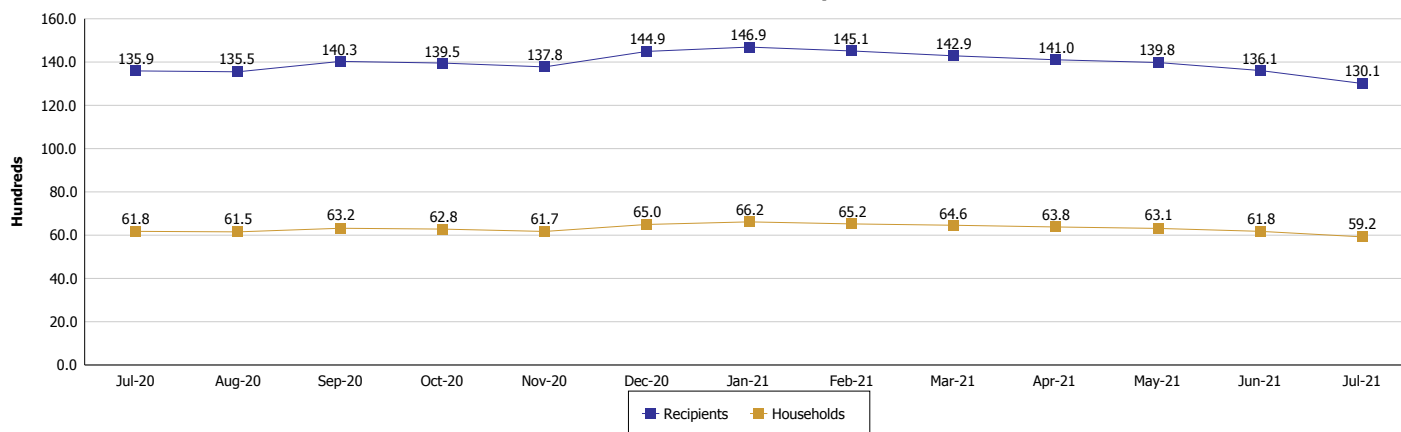
Location: Laporte County

SUPPLEMENTAL NUTRITION ASSISTANCE PROGRAM (SNAP)

SNAP Issuance



SNAP Households and Recipients



Note:

All data July 2014 and following will be broken out according to the new DFR region structure effective July 1 2021.



DIVISION OF FAMILY RESOURCES

Monthly Management Report

Reporting Month: July 2021

Location: Laporte County

HIP 2.0 and SNAP

	July 2021	June 2021	July 2020	Annual Change
Total HIP 2.0 Members	12,944	12,823	10,050	28.80%
HIP Members also SNAP Recipients	3,910	4,124	3,715	5.25%
Percentage HIP Members SNAP Recipients	30.2%	32.2%	37.0%	-6.76
HIP Members SNAP ABAWDs	0	0	25	-100.00%
Percentage HIP Members SNAP ABAWDs	0	0	0.2%	-0.2

Note:

All data July 2014 and following will be broken out according to the new DFR region structure effective July 1 2014.



DIVISION OF FAMILY RESOURCES

Monthly Management Report

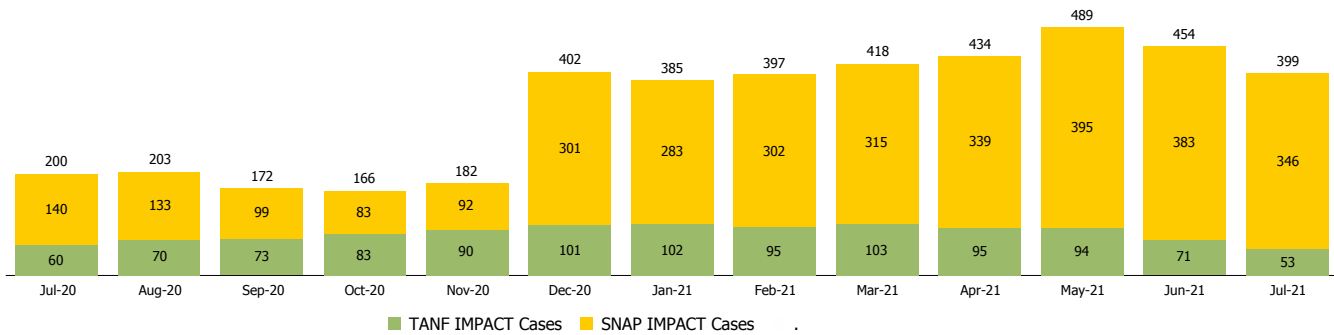
Reporting Month: July 2021

Location: Laporte County

INDIANA MANPOWER PLACEMENT AND COMPREHENSIVE TRAINING (IMPACT)

	July 2021	June 2021	July 2020	Annual Change
Number of IMPACT cases	399	454	200	99.50%
Number of TANF IMPACT adults	53	71	60	-11.67%
Number of SNAP IMPACT Cases	346	383	140	147.14%
Total number of adults employed	48	49	20	140.00%
Number of TANF IMPACT adults newly employed (within past 30 days)	5	7	5	0.00%
Number of SNAP IMPACT adults employed	43	42	15	186.67%
Total number of adults ineligible due to employment	79	64	152	-48.03%
Number of TANF adults ineligible due to employment	1	0	1	0.00%
Number of SNAP adults ineligible due to employment	78	64	151	-48.34%

IMPACT Caseloads
(SNAP, TANF, Total Caseload)



Note:

All data July 2014 and following will be broken out according to the new DFR region structure effective July 1 2014.