



## DIVISION OF FAMILY RESOURCES

# Lagrange County Monthly Management Report December 2023

### State of Indiana

Eric Holcomb  
Governor

### Family and Social Services Administration

Dan Rusyniak, MD  
Secretary

### Division of Family Resources

Adrienne Shields  
Director

For questions regarding data on this report contact:  
[office.Communications@fssa.IN.gov](mailto:office.Communications@fssa.IN.gov)



## State of Indiana

Published January 2024



## DIVISION OF FAMILY RESOURCES

### Monthly Management Report

Reporting Month: December 2023

Location: Lagrange County

#### TEMPORARY ASSISTANCE FOR NEEDY FAMILIES (TANF)

Child-Only and One-Parent Families	December 2023	November 2023	December 2022	Annual Change
Number of families receiving TANF Grants	20	17	15	33.33%
Total number of grant recipients	42	38	31	35.48%
Number of adult grant recipients	3	3	2	50.00%
Number of child grant recipients	39	35	29	34.48%
Total payments	\$4,351	\$3,887	\$3,087	40.95%
Average payment per case	\$217.55	\$228.65	\$205.80	5.71%
Average payment per recipient	\$103.60	\$102.29	\$99.58	4.03%
Number of cases with benefits reduced to zero	0	0	1	-100.00%
Number of recipients with benefits reduced to zero	0	0	1	-100.00%
Number of adult recipients with benefit reduced to zero	0	0	0	0%
Number of child recipients with benefit reduced to zero	0	0	1	-100.00%

Two-Parent Families	December 2023	November 2023	December 2022	Annual Change
Number of families receiving TANF Grants	1	0	0	0%
Total number of grant recipients	3	0	0	0%
Number of adult grant recipients	2	0	0	0%
Number of child grant recipients	1	0	0	0%
Total payments	\$320	\$0	\$0	0%
Average payment per case	\$320.00	\$0.00	\$0.00	0.00%
Average payment per recipient	\$106.67	\$0.00	\$0.00	0.00%
Number of cases with benefits reduced to zero	0	0	0	0%
Number of recipients with benefits reduced to zero	0	0	0	0%
Number of adult recipients with benefit reduced to zero	0	0	0	0%
Number of child recipients with benefit reduced to zero	0	0	0	0%

**Note:**

For August 2021, a one time payment of \$400 per recipient was included in the Total payments and Average payments. TANF section rules changed to reflect Federal reporting logic effective September 2021. For August 2022, a one-time payment of \$269 per recipient was included in the Total payments and Average payments.

Source:



## DIVISION OF FAMILY RESOURCES

### Monthly Management Report

Reporting Month: December 2023

Location: Lagrange County

#### TANF - APPLICATIONS

	December 2023	November 2023	December 2022	Annual Change
<b>Number of Applications</b>	15	18	24	-37.50%

#### TANF - RECIPIENTS BY ZIP CODE

ZIP Code	Households	Recipients
46540	1	2
46565	3	5
46746	3	11
46761	9	17
46795	5	10
<b>Total</b>	<b>21</b>	<b>45</b>



# DIVISION OF FAMILY RESOURCES

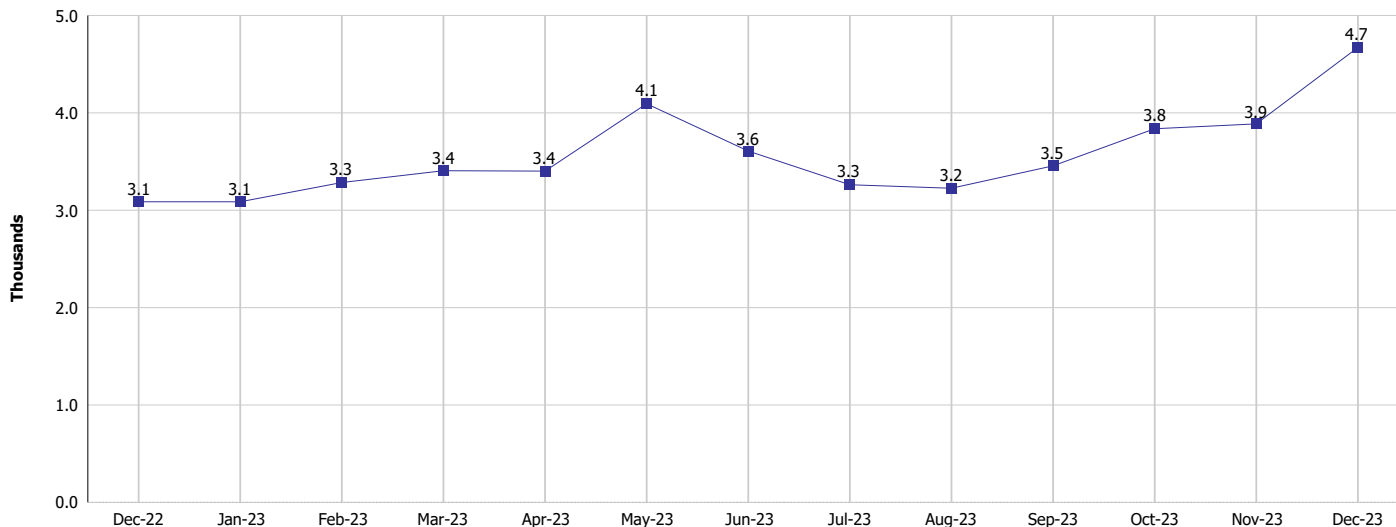
## Monthly Management Report

Reporting Month: December 2023

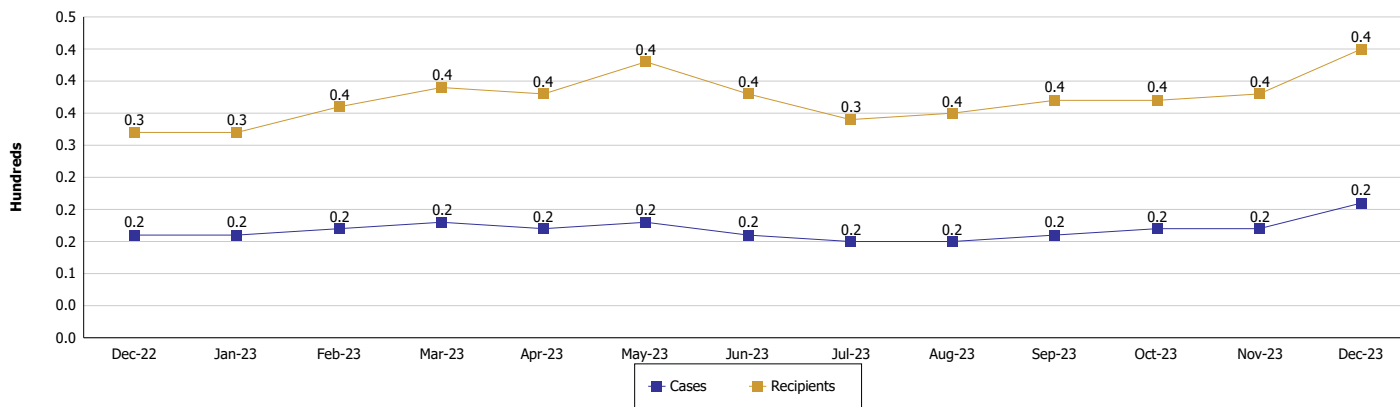
Location: Lagrange County

### TEMPORARY ASSISTANCE FOR NEEDY FAMILIES (TANF)

#### TANF Regular And TANF Two-Parent Cash Assistance



#### TANF Cases and Recipients (TANF Regular and TANF Two-Parent)



**Note:**

For August 2021, a one time payment of \$400 per recipient was included in the Total payments and Average payments. TANF section rules changed to reflect Federal reporting logic effective September 2021. For August 2022, a one-time payment of \$269 per recipient was included in the Total payments and Average payments.



## DIVISION OF FAMILY RESOURCES

### Monthly Management Report

Reporting Month: December 2023

Location: Lagrange County

#### SUPPLEMENTAL NUTRITION ASSISTANCE PROGRAM (SNAP)

	December 2023	November 2023	December 2022	Annual Change
Total issuance	\$285,193	\$279,059	\$256,991	10.97%
Number of households receiving SNAP benefits	648	652	617	5.02%
Number of recipients	1,466	1,485	1,393	5.24%
Average issuance per household	\$440.11	\$428	\$416.52	5.66%
Average issuance per recipient	\$194.54	\$187.92	\$184.49	5.45%
Number of Applications	78	91	88	-11.36%



## DIVISION OF FAMILY RESOURCES

### Monthly Management Report

Reporting Month: December 2023

Location: Lagrange County

#### SNAP - RECIPIENTS BY ZIP CODE

ZIP Code	Households	Recipients
46038	1	8
46540	6	10
46565	114	260
46571	61	170
46738	1	4
46746	86	208
46747	10	20
46755	1	1
46761	238	510
46767	2	3
46771	1	2
46776	11	18
46786	5	21
46789	6	18
46795	104	208
None	1	5
<b>Totals</b>	<b>648</b>	<b>1,466</b>



## DIVISION OF FAMILY RESOURCES

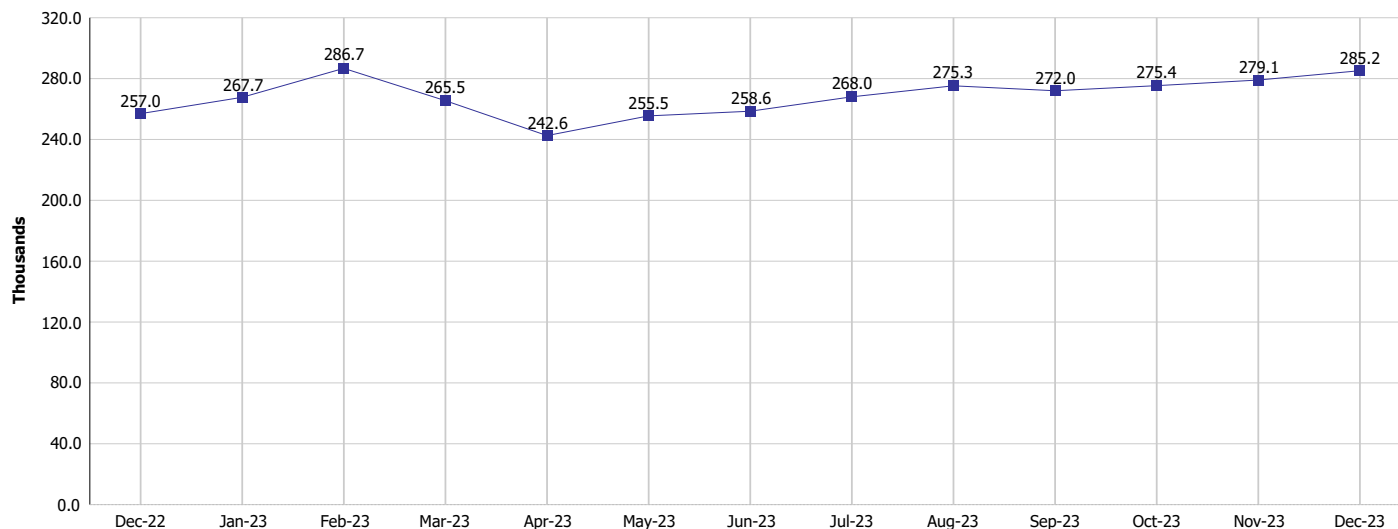
### Monthly Management Report

Reporting Month: December 2023

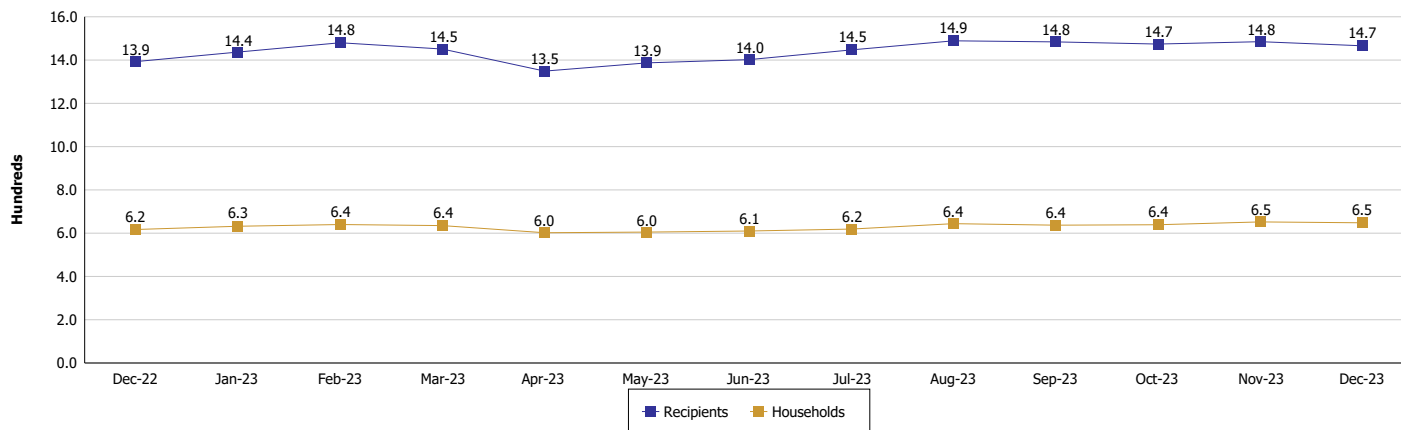
Location: Lagrange County

#### SUPPLEMENTAL NUTRITION ASSISTANCE PROGRAM (SNAP)

SNAP Issuance



SNAP Households and Recipients



**Note:**

Run Date: Jan 12, 2024



## DIVISION OF FAMILY RESOURCES

### Monthly Management Report

Reporting Month: December 2023

Location: Lagrange County

#### HIP 2.0 and SNAP

	December 2023	November 2023	December 2022	Annual Change
Total HIP 2.0 Members	2,011	2,015	2,046	-1.71%
HIP Members also SNAP Recipients	460	472	397	15.87%
Percentage HIP Members SNAP Recipients	22.9%	23.4%	19.4%	3.47
HIP Members SNAP ABAWDs	18	21	20	-10.00%
Percentage HIP Members SNAP ABAWDs	0.9%	1.0%	1.0%	-0.1





**DIVISION OF FAMILY RESOURCES**

**Monthly Management Report**

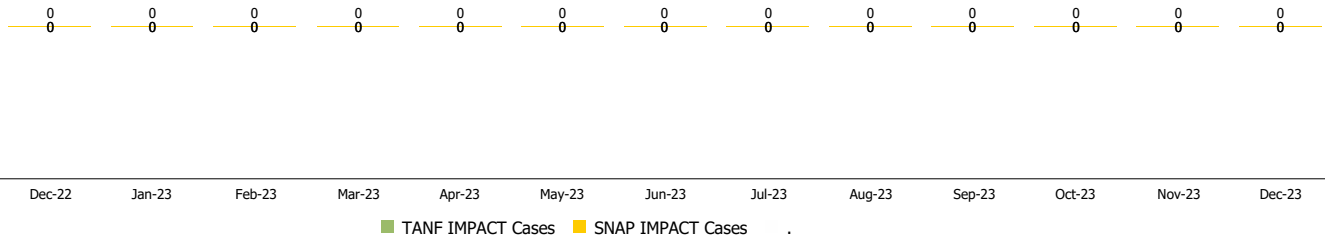
Reporting Month: December 2023

Location: Lagrange County

**INDIANA MANPOWER PLACEMENT AND COMPREHENSIVE TRAINING (IMPACT)**

	December 2023	November 2023	December 2022	Annual Change
Number of IMPACT cases	0	0	0	
Number of TANF IMPACT adults	0	0	0	
Number of SNAP IMPACT Cases	0	0	0	
Total number of adults employed	3	1	8	-62.50%
Number of TANF IMPACT adults newly employed (within past 30 days)	0	0	0	
Number of SNAP IMPACT adults employed	3	1	8	-62.50%
Total number of adults ineligible due to employment	1	1	4	-75.00%
Number of TANF adults ineligible due to employment	0	0	0	
Number of SNAP adults ineligible due to employment	1	1	4	-75.00%

**IMPACT Caseloads**  
(SNAP, TANF, Total Caseload)



**Note:**

Effective January 2022, these numbers have been adjusted to reflect only those actually participating in IMPACT.