



DIVISION OF FAMILY RESOURCES

Johnson County Monthly Management Report December 2023

State of Indiana

Eric Holcomb
Governor

Family and Social Services Administration

Dan Rusyniak, MD
Secretary

Division of Family Resources

Adrienne Shields
Director

For questions regarding data on this report contact:
office.Communications@fssa.IN.gov



State of Indiana

Published January 2024



DIVISION OF FAMILY RESOURCES

Monthly Management Report

Reporting Month: December 2023

Location: Johnson County

TEMPORARY ASSISTANCE FOR NEEDY FAMILIES (TANF)

Child-Only and One-Parent Families	December 2023	November 2023	December 2022	Annual Change
Number of families receiving TANF Grants	52	46	44	18.18%
Total number of grant recipients	102	86	81	25.93%
Number of adult grant recipients	15	13	6	150.00%
Number of child grant recipients	87	73	75	16.00%
Total payments	\$11,727	\$9,889	\$8,454	38.72%
Average payment per case	\$225.52	\$214.98	\$192.14	17.37%
Average payment per recipient	\$114.97	\$114.99	\$104.37	10.16%
Number of cases with benefits reduced to zero	0	1	3	-100.00%
Number of recipients with benefits reduced to zero	0	1	4	-100.00%
Number of adult recipients with benefit reduced to zero	0	0	1	-100.00%
Number of child recipients with benefit reduced to zero	0	1	3	-100.00%

Two-Parent Families	December 2023	November 2023	December 2022	Annual Change
Number of families receiving TANF Grants	6	8	3	100.00%
Total number of grant recipients	27	35	7	285.71%
Number of adult grant recipients	12	16	4	200.00%
Number of child grant recipients	15	19	3	400.00%
Total payments	\$2,434	\$3,475	\$715	240.42%
Average payment per case	\$405.67	\$434.38	\$238.33	70.21%
Average payment per recipient	\$90.15	\$99.29	\$102.14	-11.74%
Number of cases with benefits reduced to zero	0	0	0	0%
Number of recipients with benefits reduced to zero	0	0	0	0%
Number of adult recipients with benefit reduced to zero	0	0	0	0%
Number of child recipients with benefit reduced to zero	0	0	0	0%

Note:

For August 2021, a one time payment of \$400 per recipient was included in the Total payments and Average payments. TANF section rules changed to reflect Federal reporting logic effective September 2021. For August 2022, a one-time payment of \$269 per recipient was included in the Total payments and Average payments.

Source:



DIVISION OF FAMILY RESOURCES

Monthly Management Report

Reporting Month: December 2023

Location: Johnson County

TANF - APPLICATIONS

	December 2023	November 2023	December 2022	Annual Change
Number of Applications	99	108	84	17.86%

TANF - RECIPIENTS BY ZIP CODE

ZIP Code	Households	Recipients
46124	2	3
46131	19	36
46142	9	24
46143	22	55
46164	2	2
46181	1	2
46184	3	7
Total	58	129



DIVISION OF FAMILY RESOURCES

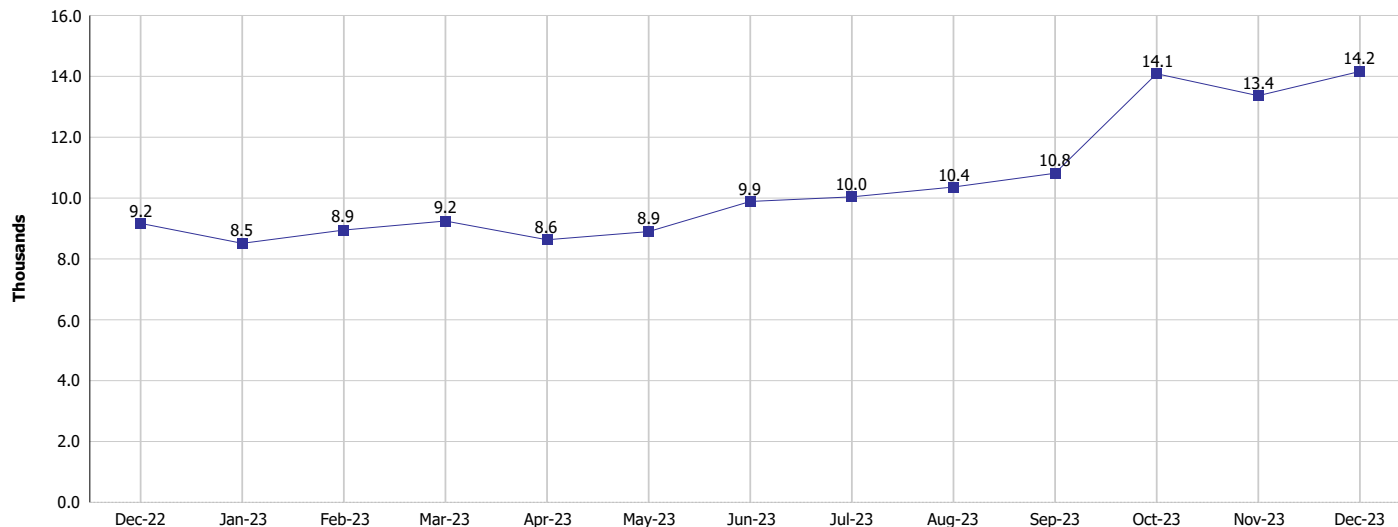
Monthly Management Report

Reporting Month: December 2023

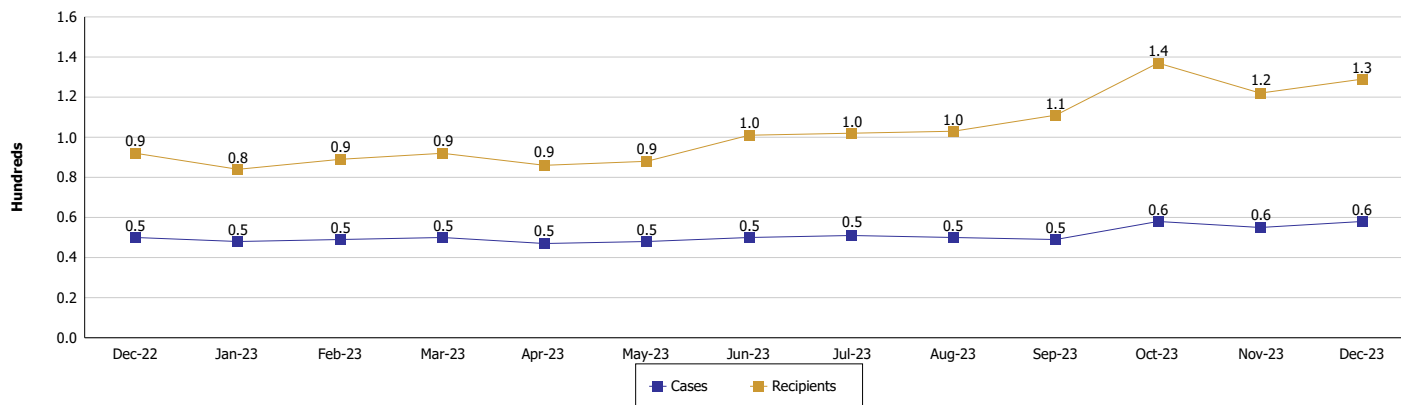
Location: Johnson County

TEMPORARY ASSISTANCE FOR NEEDY FAMILIES (TANF)

TANF Regular And TANF Two-Parent Cash Assistance



TANF Cases and Recipients (TANF Regular and TANF Two-Parent)



Note:

For August 2021, a one time payment of \$400 per recipient was included in the Total payments and Average payments. TANF section rules changed to reflect Federal reporting logic effective September 2021. For August 2022, a one-time payment of \$269 per recipient was included in the Total payments and Average payments.



DIVISION OF FAMILY RESOURCES

Monthly Management Report

Reporting Month: December 2023

Location: Johnson County

SUPPLEMENTAL NUTRITION ASSISTANCE PROGRAM (SNAP)

	December 2023	November 2023	December 2022	Annual Change
Total issuance	\$2,068,570	\$2,017,131	\$1,809,126	14.34%
Number of households receiving SNAP benefits	4,491	4,398	4,169	7.72%
Number of recipients	10,198	10,010	9,613	6.09%
Average issuance per household	\$460.6	\$458.65	\$433.95	6.14%
Average issuance per recipient	\$202.84	\$201.51	\$188.2	7.78%
Number of Applications	558	598	545	2.39%



DIVISION OF FAMILY RESOURCES

Monthly Management Report

Reporting Month: December 2023

Location: Johnson County

SNAP - RECIPIENTS BY ZIP CODE

ZIP Code	Households	Recipients
46038	1	5
46069	1	1
46106	99	216
46113	1	1
46124	278	509
46131	1,031	2,331
46142	853	2,011
46143	1,708	3,959
46151	1	3
46158	3	8
46160	17	33
46162	10	20
46164	60	146
46168	1	1
46176	3	3
46181	75	160
46184	312	721
46202	1	1
46203	4	8
46205	1	1
46208	2	5
46214	1	4
46217	1	1
46218	1	5
46222	1	1
46227	9	11
46229	1	3
46235	1	5
46236	1	3
46237	1	1
46250	1	1
46254	1	3
46256	1	1
46259	3	5
46410	1	2
47201	1	1
47302	1	1
None	3	7
Totals	4,491	10,198



DIVISION OF FAMILY RESOURCES

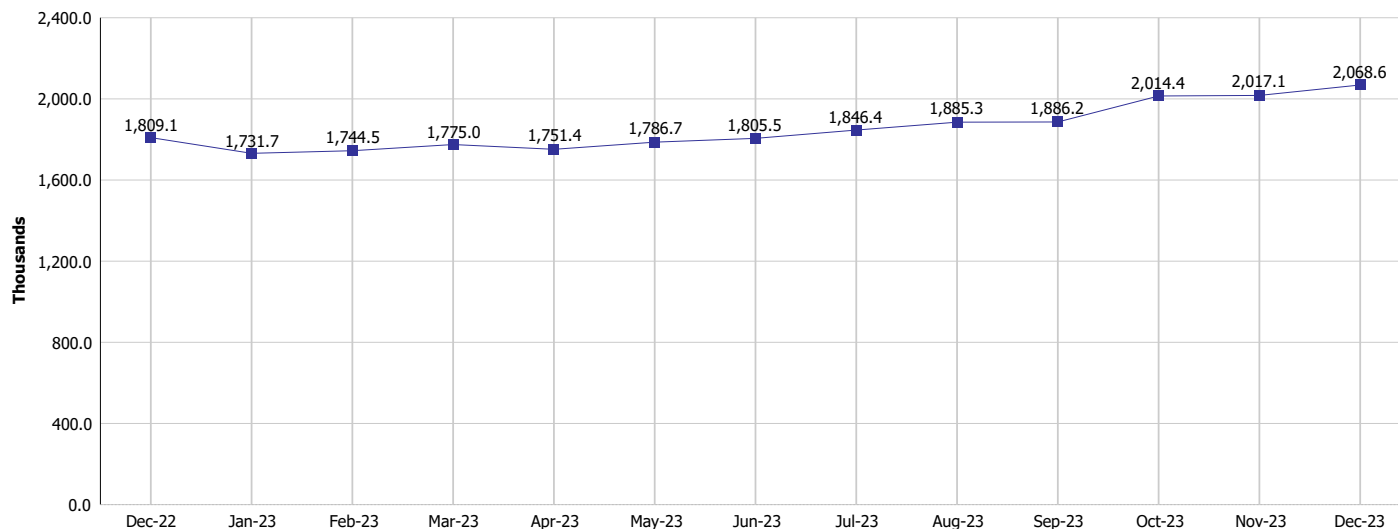
Monthly Management Report

Reporting Month: December 2023

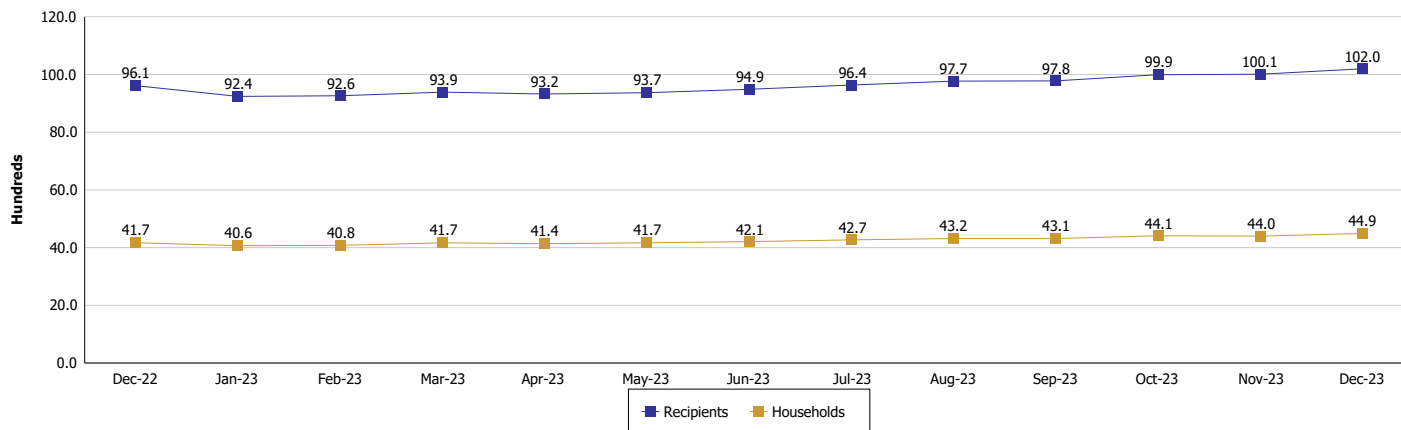
Location: Johnson County

SUPPLEMENTAL NUTRITION ASSISTANCE PROGRAM (SNAP)

SNAP Issuance



SNAP Households and Recipients



Note:

Run Date: Jan 12, 2024



DIVISION OF FAMILY RESOURCES

Monthly Management Report

Reporting Month: December 2023

Location: Johnson County

HIP 2.0 and SNAP

	December 2023	November 2023	December 2022	Annual Change
Total HIP 2.0 Members	15,591	15,821	16,515	-5.59%
HIP Members also SNAP Recipients	3,124	3,084	2,926	6.77%
Percentage HIP Members SNAP Recipients	20.0%	19.5%	17.7%	2.32
HIP Members SNAP ABAWDs	148	143	136	8.82%
Percentage HIP Members SNAP ABAWDs	0.9%	0.9%	0.8%	0.1

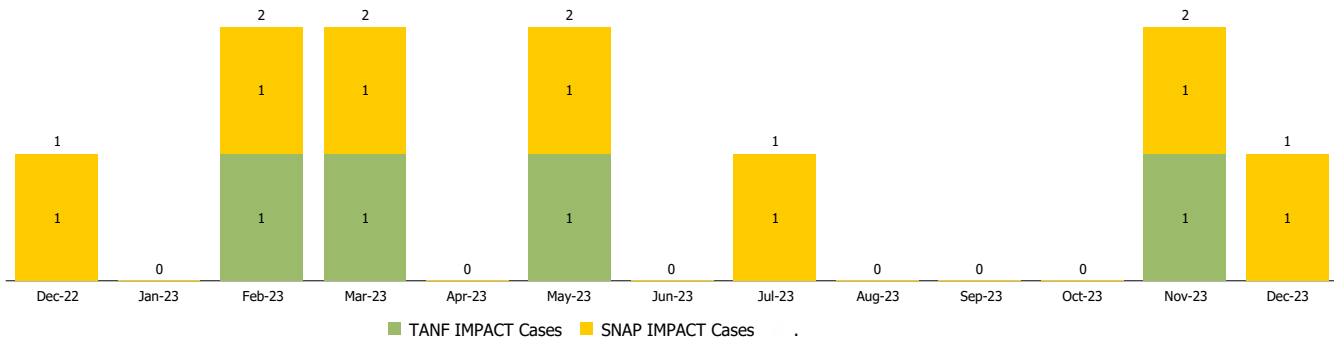
Monthly Management Report

Reporting Month: December 2023 Location: Johnson County

INDIANA MANPOWER PLACEMENT AND COMPREHENSIVE TRAINING (IMPACT)

	December 2023	November 2023	December 2022	Annual Change
Number of IMPACT cases	1	2	1	0.00%
Number of TANF IMPACT adults	0	1	0	
Number of SNAP IMPACT Cases	1	1	1	0.00%
Total number of adults employed	21	23	39	-46.15%
Number of TANF IMPACT adults newly employed (within past 30 days)	0	0	0	
Number of SNAP IMPACT adults employed	21	23	39	-46.15%
Total number of adults ineligible due to employment	28	26	33	-15.15%
Number of TANF adults ineligible due to employment	1	0	0	
Number of SNAP adults ineligible due to employment	27	26	33	-18.18%

IMPACT Caseloads
(SNAP, TANF, Total Caseload)



Note: Effective January 2022, these numbers have been adjusted to reflect only those actually participating in IMPACT.