



DIVISION OF FAMILY RESOURCES

Jennings County Monthly Management Report October 2025

State of Indiana

Mike Braun
Governor

Family and Social Services Administration

Mitch Roob
Secretary

Division of Family Resources

Sunshine Beam
Director

For questions regarding data on this report contact:
office.Communications@fssa.IN.gov



State of Indiana

Published November 2025



DIVISION OF FAMILY RESOURCES

Monthly Management Report

Reporting Month: October 2025

Location: Jennings County

TEMPORARY ASSISTANCE FOR NEEDY FAMILIES (TANF)

Child-Only and One-Parent Families	October 2025	September 2025	October 2024	Annual Change
Number of families receiving TANF Grants	12	15	15	-20.00%
Total number of grant recipients	30	36	36	-16.67%
Number of adult grant recipients	2	4	7	-71.43%
Number of child grant recipients	28	32	29	-3.45%
Total payments	\$4,934	\$6,303	\$6,429	-23.25%
Average payment per case	\$411.17	\$420.20	\$428.60	-4.07%
Average payment per recipient	\$164.47	\$175.08	\$178.58	-7.90%
Number of cases with benefits reduced to zero	0	0	1	-100.00%
Number of recipients with benefits reduced to zero	0	0	2	-100.00%
Number of adult recipients with benefit reduced to zero	0	0	0	0%
Number of child recipients with benefit reduced to zero	0	0	2	-100.00%

Pregnancy TANF Families	October 2025	September 2025	October 2024	Annual Change
Number of families receiving TANF Grants	0	1	1	-100.00%
Total number of grant recipients	0	1	1	-100.00%
Total payments	\$0.00	\$248.00	\$248.00	-100.00%
Average payment per case	\$0.00	\$248.00	\$248.00	-100.00%
Average payment per recipient	\$0.00	\$248.00	\$248.00	-100.00%
Number of cases with benefits reduced to zero	0	0	0	0%
Number of recipients with benefits reduced to zero	0	0	0	0%



DIVISION OF FAMILY RESOURCES

Monthly Management Report

Two-Parent Families	October 2025	September 2025	October 2024	Annual Change
Number of families receiving TANF Grants	0	0	3	-100.00%
Total number of grant recipients	0	0	9	-100.00%
Number of adult grant recipients	0	0	5	-100.00%
Number of child grant recipients	0	0	4	-100.00%
Total payments	\$0	\$0	\$1,538	-100.00%
Average payment per case	\$0.00	\$0.00	\$512.67	-100.00%
Average payment per recipient	\$0.00	\$0.00	\$170.89	-100.00%
Number of cases with benefits reduced to zero	0	0	0	0%
Number of recipients with benefits reduced to zero	0	0	0	0%
Number of adult recipients with benefit reduced to zero	0	0	0	0%
Number of child recipients with benefit reduced to zero	0	0	0	0%

Note: The two-parent case count includes cases in which a parent living in the home is excluded from receiving TANF benefits but whose income is used in the TANF eligibility determination.



DIVISION OF FAMILY RESOURCES

Monthly Management Report

Reporting Month: October 2025

Location: Jennings County

TANF - APPLICATIONS

	October 2025	September 2025	October 2024	Annual Change
Number of Applications	15	27	25	-40.00%

TANF - RECIPIENTS BY ZIP CODE

ZIP Code	Households	Recipients
47223	2	3
47227	1	5
47265	9	22
Total	12	30



DIVISION OF FAMILY RESOURCES

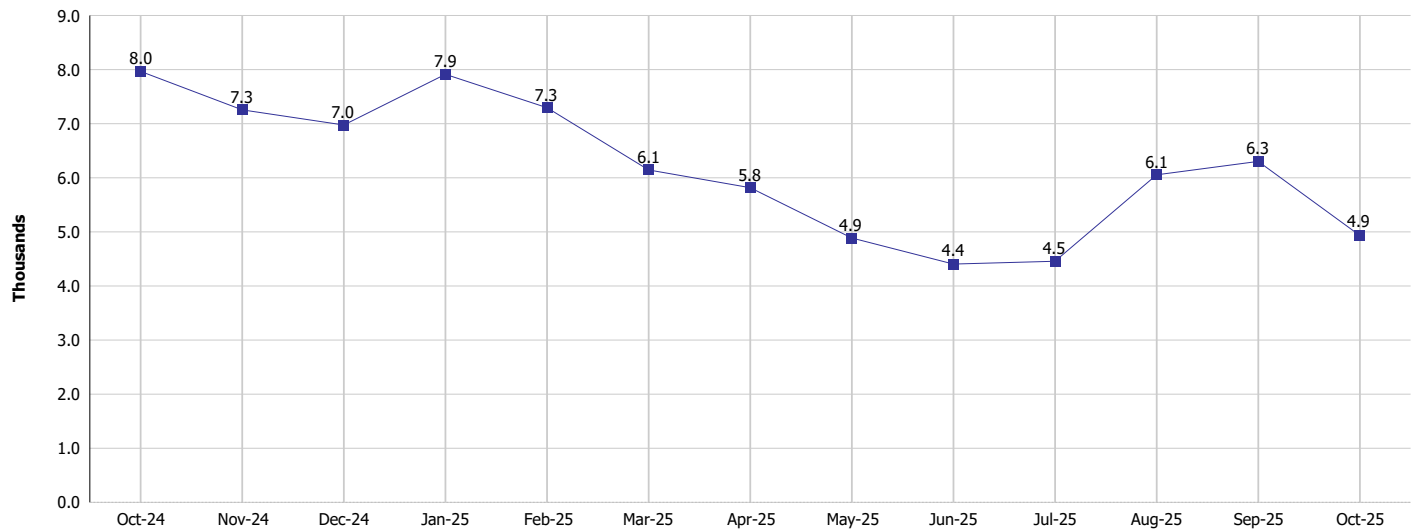
Monthly Management Report

Reporting Month: October 2025

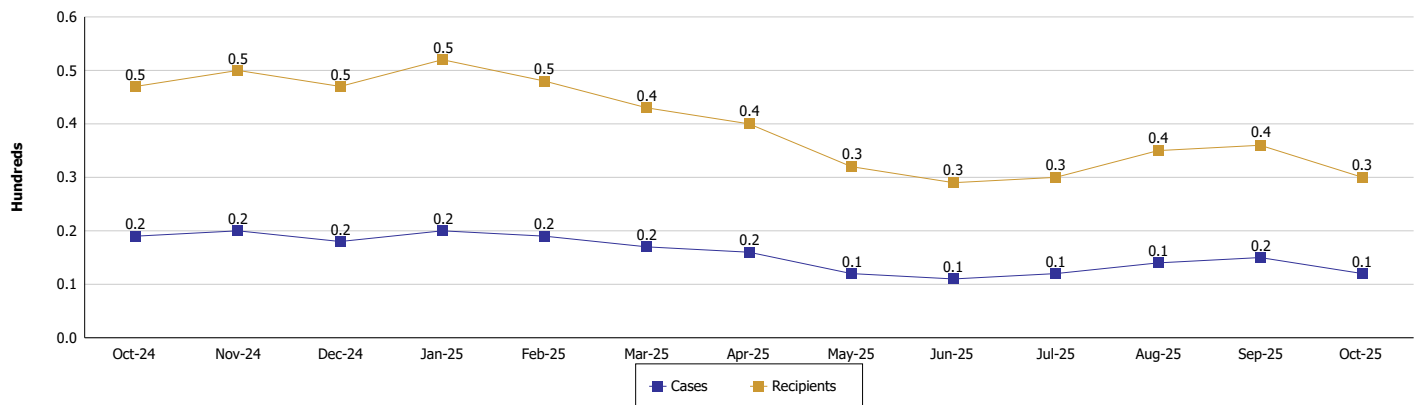
Location: Jennings County

TEMPORARY ASSISTANCE FOR NEEDY FAMILIES (TANF)

TANF Regular And TANF Two-Parent Cash Assistance



TANF Cases and Recipients
(TANF Regular and TANF Two-Parent)





DIVISION OF FAMILY RESOURCES

Monthly Management Report

Reporting Month: October 2025

Location: Jennings County

SUPPLEMENTAL NUTRITION ASSISTANCE PROGRAM (SNAP)

	October 2025	September 2025	October 2024	Annual Change
Total issuance	\$411,027	\$397,159	\$432,619	-4.99%
Number of households receiving SNAP benefits	1,077	1,062	1,124	-4.18%
Number of recipients	2,220	2,199	2,367	-6.21%
Average issuance per household	\$381.64	\$373.97	\$384.89	-0.84%
Average issuance per recipient	\$185.15	\$180.61	\$182.77	1.3%
Number of Applications	134	153	161	-16.77%



DIVISION OF FAMILY RESOURCES

Monthly Management Report

Reporting Month: October 2025

Location: Jennings County

SNAP - RECIPIENTS BY ZIP CODE

ZIP Code	Households	Recipients
46143	1	1
46176	1	1
47001	1	1
47037	1	1
47130	1	1
47170	1	1
47203	1	6
47223	49	95
47227	28	86
47229	3	10
47230	5	10
47231	8	26
47232	21	39
47240	1	1
47243	2	2
47250	1	1
47264	1	4
47265	872	1,750
47270	28	58
47273	33	93
47274	8	17
47282	9	14
47283	1	2
Totals	1,077	2,220



DIVISION OF FAMILY RESOURCES

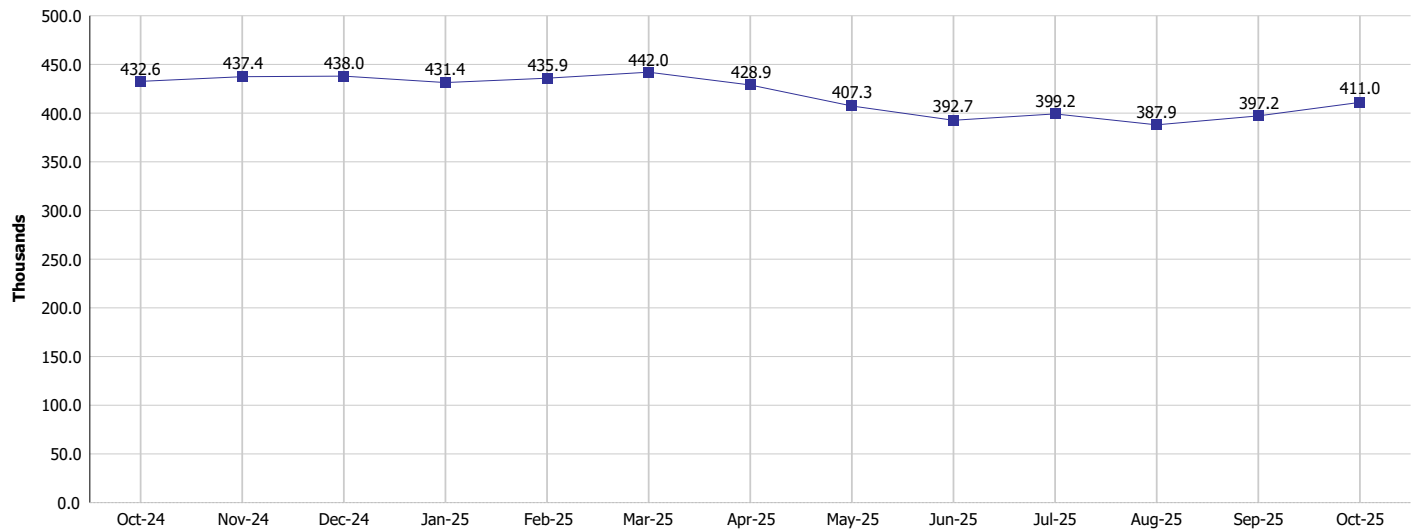
Monthly Management Report

Reporting Month: October 2025

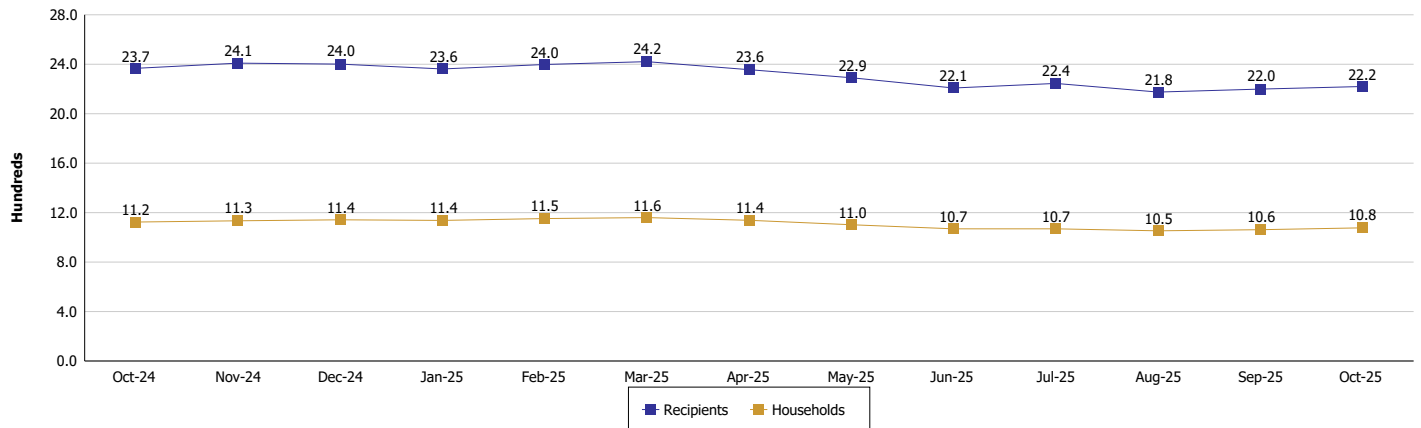
Location: Jennings County

SUPPLEMENTAL NUTRITION ASSISTANCE PROGRAM (SNAP)

SNAP Issuance



SNAP Households and Recipients





DIVISION OF FAMILY RESOURCES

Monthly Management Report

Reporting Month: October 2025

Location: Jennings County

HIP 2.0 and SNAP

	October 2025	September 2025	October 2024	Annual Change
Total HIP 2.0 Members	2,473	2,489	2,880	-14.13%
HIP Members also SNAP Recipients	657	649	715	-8.11%
Percentage HIP Members SNAP Recipients	26.6%	26.1%	24.8%	1.74
HIP Members SNAP ABAWDs	12	10	31	-61.29%
Percentage HIP Members SNAP ABAWDs	0.5%	0.4%	1.1%	-0.6



DIVISION OF FAMILY RESOURCES

Monthly Management Report

Reporting Month: October 2025

Location: Jennings County

INDIANA MANPOWER PLACEMENT AND COMPREHENSIVE TRAINING (IMPACT)

	October 2025	September 2025	October 2024	Annual Change
Number of IMPACT cases	2	2	2	0.00%
Number of TANF IMPACT adults	1	1	1	0.00%
Number of SNAP IMPACT Cases	1	1	1	0.00%
Total number of adults employed	9	3	9	0.00%
Number of TANF IMPACT adults newly employed (within past 30 days)	0	0	0	
Number of SNAP IMPACT adults employed	9	3	9	0.00%
Total number of adults ineligible due to employment	7	8	9	-22.22%
Number of TANF adults ineligible due to employment	0	0	0	
Number of SNAP adults ineligible due to employment	7	8	9	-22.22%

