



## DIVISION OF FAMILY RESOURCES

# Jay County Monthly Management Report October 2025

### State of Indiana

Mike Braun  
Governor

### Family and Social Services Administration

Mitch Roob  
Secretary

### Division of Family Resources

Sunshine Beam  
Director

For questions regarding data on this report contact:  
[office.Communications@fssa.IN.gov](mailto:office.Communications@fssa.IN.gov)



## State of Indiana

Published November 2025



## DIVISION OF FAMILY RESOURCES

### Monthly Management Report

Reporting Month: October 2025

Location: Jay County

#### TEMPORARY ASSISTANCE FOR NEEDY FAMILIES (TANF)

Child-Only and One-Parent Families	October 2025	September 2025	October 2024	Annual Change
Number of families receiving TANF Grants	12	11	10	20.00%
Total number of grant recipients	25	21	15	66.67%
Number of adult grant recipients	4	4	3	33.33%
Number of child grant recipients	21	17	12	75.00%
Total payments	\$4,670	\$4,053	\$2,753	69.63%
Average payment per case	\$389.17	\$368.45	\$275.30	41.36%
Average payment per recipient	\$186.80	\$193.00	\$183.53	1.78%
Number of cases with benefits reduced to zero	1	1	0	0%
Number of recipients with benefits reduced to zero	3	3	0	0%
Number of adult recipients with benefit reduced to zero	1	1	0	0%
Number of child recipients with benefit reduced to zero	2	2	0	0%

Pregnancy TANF Families	October 2025	September 2025	October 2024	Annual Change
Number of families receiving TANF Grants	0	0	0	0%
Total number of grant recipients	0	0	0	0%
Total payments	\$0.00	\$0.00	\$0.00	0%
Average payment per case	\$0.00	\$0.00	\$0.00	0.00%
Average payment per recipient	\$0.00	\$0.00	\$0.00	0.00%
Number of cases with benefits reduced to zero	0	0	0	0%
Number of recipients with benefits reduced to zero	0	0	0	0%



## DIVISION OF FAMILY RESOURCES

### Monthly Management Report

Two-Parent Families	October 2025	September 2025	October 2024	Annual Change
Number of families receiving TANF Grants	0	0	0	0%
Total number of grant recipients	0	0	0	0%
Number of adult grant recipients	0	0	0	0%
Number of child grant recipients	0	0	0	0%
Total payments	\$0	\$0	\$0	0%
Average payment per case	\$0.00	\$0.00	\$0.00	0.00%
Average payment per recipient	\$0.00	\$0.00	\$0.00	0.00%
Number of cases with benefits reduced to zero	0	0	0	0%
Number of recipients with benefits reduced to zero	0	0	0	0%
Number of adult recipients with benefit reduced to zero	0	0	0	0%
Number of child recipients with benefit reduced to zero	0	0	0	0%

Note: The two-parent case count includes cases in which a parent living in the home is excluded from receiving TANF benefits but whose income is used in the TANF eligibility determination.



## DIVISION OF FAMILY RESOURCES

### Monthly Management Report

Reporting Month: October 2025

Location: Jay County

#### TANF - APPLICATIONS

	October 2025	September 2025	October 2024	Annual Change
Number of Applications	12	20	21	-42.86%

#### TANF - RECIPIENTS BY ZIP CODE

ZIP Code	Households	Recipients
47336	2	7
47369	1	1
47371	8	14
47373	1	3
Total	12	25



## DIVISION OF FAMILY RESOURCES

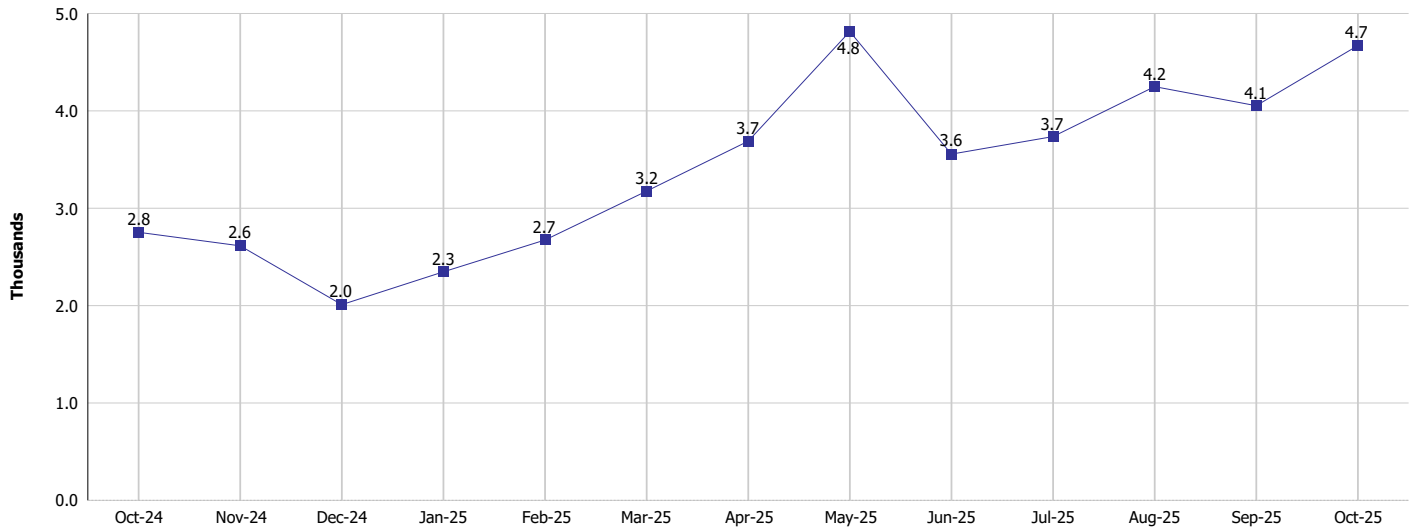
### Monthly Management Report

Reporting Month: October 2025

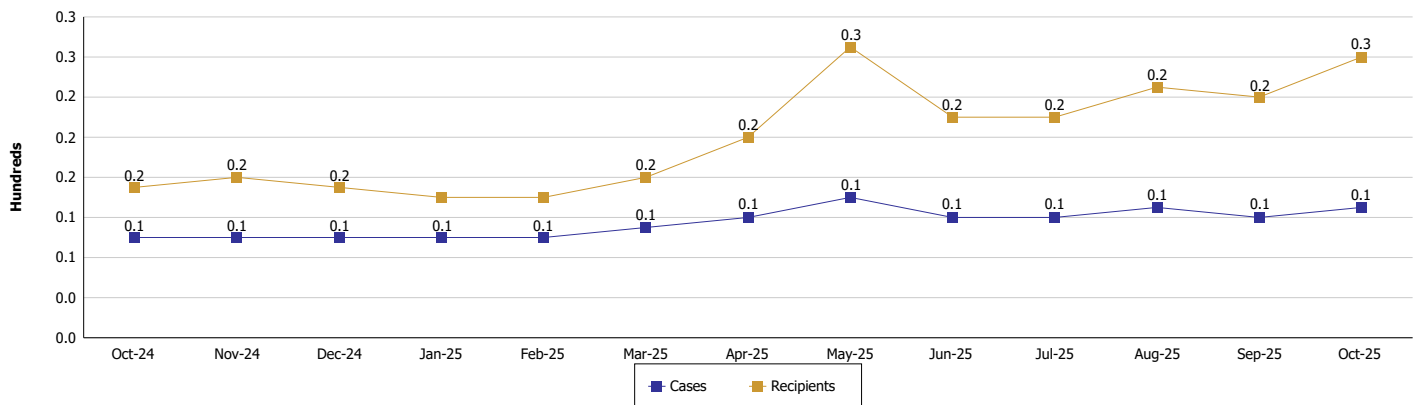
Location: Jay County

#### TEMPORARY ASSISTANCE FOR NEEDY FAMILIES (TANF)

TANF Regular And TANF Two-Parent Cash Assistance



TANF Cases and Recipients  
(TANF Regular and TANF Two-Parent)





**DIVISION OF FAMILY RESOURCES**

**Monthly Management Report**

Reporting Month: October 2025	Location: Jay County
-------------------------------	----------------------

**SUPPLEMENTAL NUTRITION ASSISTANCE PROGRAM (SNAP)**

	October 2025	September 2025	October 2024	Annual Change
Total issuance	\$276,204	\$261,711	\$274,226	0.72%
Number of households receiving SNAP benefits	772	764	773	-0.13%
Number of recipients	1,483	1,452	1,529	-3.01%
Average issuance per household	\$357.78	\$342.55	\$354.76	0.85%
Average issuance per recipient	\$186.25	\$180.24	\$179.35	3.85%
Number of Applications	87	94	105	-17.14%



**DIVISION OF FAMILY RESOURCES**

**Monthly Management Report**

Reporting Month: October 2025	Location: Jay County
-------------------------------	----------------------

**SNAP - RECIPIENTS BY ZIP CODE**

ZIP Code	Households	Recipients
46208	1	3
46740	1	2
46809	1	1
47250	2	6
47326	29	71
47336	130	246
47359	3	5
47369	49	102
47371	464	875
47373	76	142
47381	8	16
47390	7	13
None	1	1
Totals	772	1,483



## DIVISION OF FAMILY RESOURCES

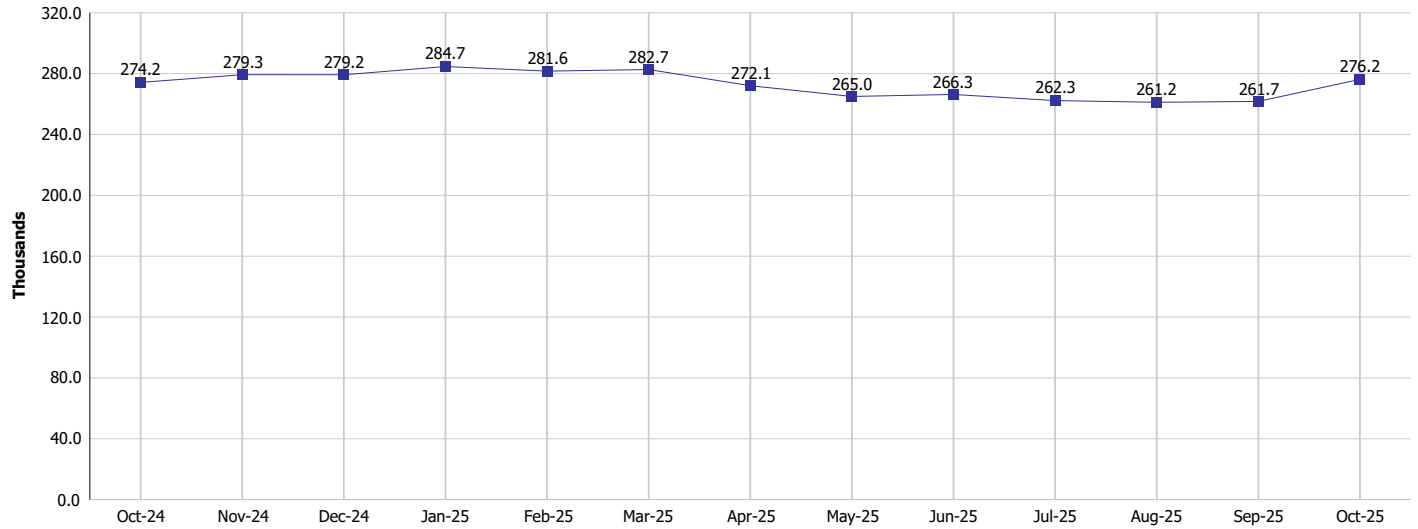
### Monthly Management Report

Reporting Month: October 2025

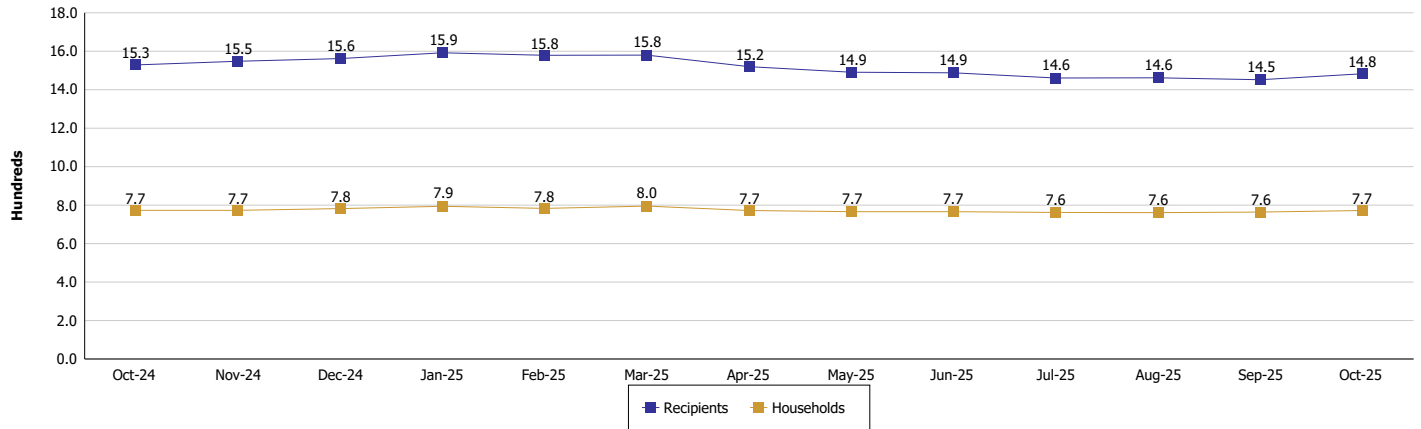
Location: Jay County

#### SUPPLEMENTAL NUTRITION ASSISTANCE PROGRAM (SNAP)

##### SNAP Issuance



##### SNAP Households and Recipients





## DIVISION OF FAMILY RESOURCES

### Monthly Management Report

Reporting Month: October 2025

Location: Jay County

#### HIP 2.0 and SNAP

	October 2025	September 2025	October 2024	Annual Change
Total HIP 2.0 Members	1,806	1,813	2,105	-14.20%
HIP Members also SNAP Recipients	464	467	461	0.65%
Percentage HIP Members SNAP Recipients	25.7%	25.8%	21.9%	3.79
HIP Members SNAP ABAWDs	11	19	21	-47.62%
Percentage HIP Members SNAP ABAWDs	0.6%	1.0%	1.0%	-0.4



## DIVISION OF FAMILY RESOURCES

### Monthly Management Report

Reporting Month: October 2025

Location: Jay County

#### INDIANA MANPOWER PLACEMENT AND COMPREHENSIVE TRAINING (IMPACT)

	October 2025	September 2025	October 2024	Annual Change
Number of IMPACT cases	0	0	0	
Number of TANF IMPACT adults	0	0	0	
Number of SNAP IMPACT Cases	0	0	0	
Total number of adults employed	3	5	2	50.00%
Number of TANF IMPACT adults newly employed (within past 30 days)	0	0	0	
Number of SNAP IMPACT adults employed	3	5	2	50.00%
Total number of adults ineligible due to employment	1	6	5	-80.00%
Number of TANF adults ineligible due to employment	0	0	0	
Number of SNAP adults ineligible due to employment	1	6	5	-80.00%

**IMPACT Caseloads**  
(SNAP, TANF, Total Caseload)

