



DIVISION OF FAMILY RESOURCES

Howard County Monthly Management Report July 2021

State of Indiana

Eric Holcomb
Governor

Family and Social Services Administration

Jennifer Sullivan, M.D.
Secretary

Division of Family Resources

Adrienne Shields
Director

For questions regarding data on this report contact:
office.Communications@fssa.IN.gov



State of Indiana

Published August 2021



DIVISION OF FAMILY RESOURCES

Monthly Management Report

Reporting Month: July 2021

Location: Howard County

TEMPORARY ASSISTANCE FOR NEEDY FAMILIES (TANF)

Child-Only and One-Parent Families	Jul 31, 2021	June 2021	July 2020	Annual Change
Number of families receiving TANF Grants	125	125	130	-3.85%
Total number of grant recipients	284	289	277	2.53%
Number of adult grant recipients	56	58	45	24.44%
Number of child grant recipients	228	231	232	-1.72%
Total payments	\$27,532	\$27,259	\$26,121	5.40%
Average payment per case	\$220.26	\$218.07	\$200.93	9.62%
Average payment per recipient	\$96.94	\$94.32	\$94.30	2.80%
Number of cases with benefits reduced to zero	6	8	2	200.00%
Number of recipients with benefits reduced to zero	14	16	5	180.00%
Number of adult recipients with benefit reduced to zero	4	4	1	300.00%
Number of child recipients with benefit reduced to zero	10	12	4	150.00%

Two-Parent Families	Jul 31, 2021	June 2021	July 2020	Annual Change
Number of families receiving TANF Grants	21	20	8	162.50%
Total number of grant recipients	57	51	24	137.50%
Number of adult grant recipients	12	9	10	20.00%
Number of child grant recipients	45	42	14	221.43%
Total payments	\$4,477	\$4,381	\$2,132	109.99%
Average payment per case	\$213.19	\$219.05	\$266.50	-20.00%
Average payment per recipient	\$78.54	\$85.90	\$88.83	-11.58%
Number of cases with benefits reduced to zero	1	0	0	0%
Number of recipients with benefits reduced to zero	2	0	0	0%
Number of adult recipients with benefit reduced to zero	1	0	0	0%
Number of child recipients with benefit reduced to zero	1	0	0	0%

Note:

All data July 2014 and following will be broken out according to the new DFR region structure effective July 1 2014.

Source:



DIVISION OF FAMILY RESOURCES

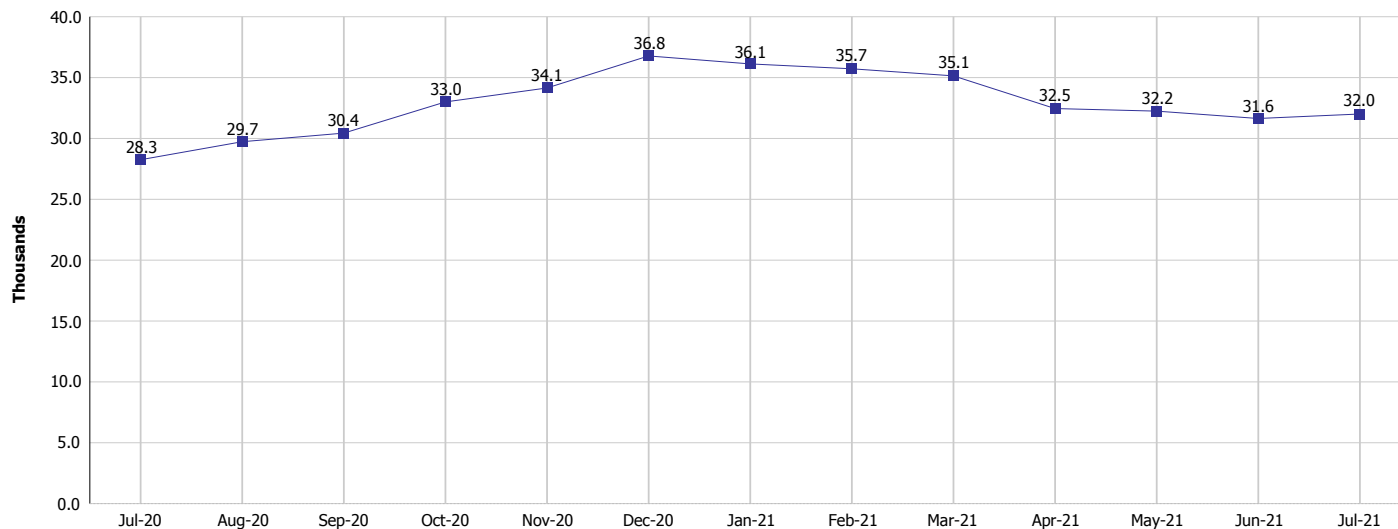
Monthly Management Report

Reporting Month: July 2021

Location: Howard County

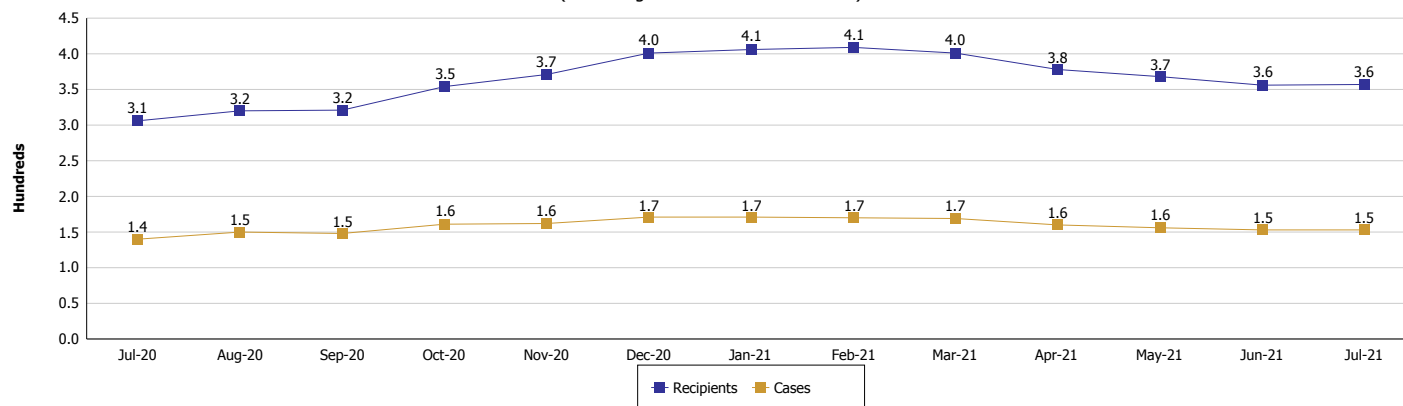
TEMPORARY ASSISTANCE FOR NEEDY FAMILIES (TANF)

TANF Regular And TANF Two-Parent Cash Assistance



TANF Cases and Recipients

(TANF Regular and TANF Two-Parent)



Note:

All data July 2014 and following will be broken out according to the new DFR region structure effective July 1 2014.



DIVISION OF FAMILY RESOURCES

Monthly Management Report

Reporting Month: July 2021

Location: Howard County

SUPPLEMENTAL NUTRITION ASSISTANCE PROGRAM (SNAP)

	July 2021	June 2021	July 2020	Annual Change
Total issuance	\$2,407,833	\$2,419,233	\$1,813,548	32.77%
Number of households receiving SNAP benefits	4,972	5,013	4,886	1.76%
Number of recipients	10,404	10,498	10,350	0.52%
Average issuance per household	\$484.28	\$482.59	\$371.17	30.47%
Average issuance per recipient	\$231.43	\$230.45	\$175.22	32.08%

Note:

All data July 2014 and following will be broken out according to the new DFR region structure effective July 1 2014.



DIVISION OF FAMILY RESOURCES

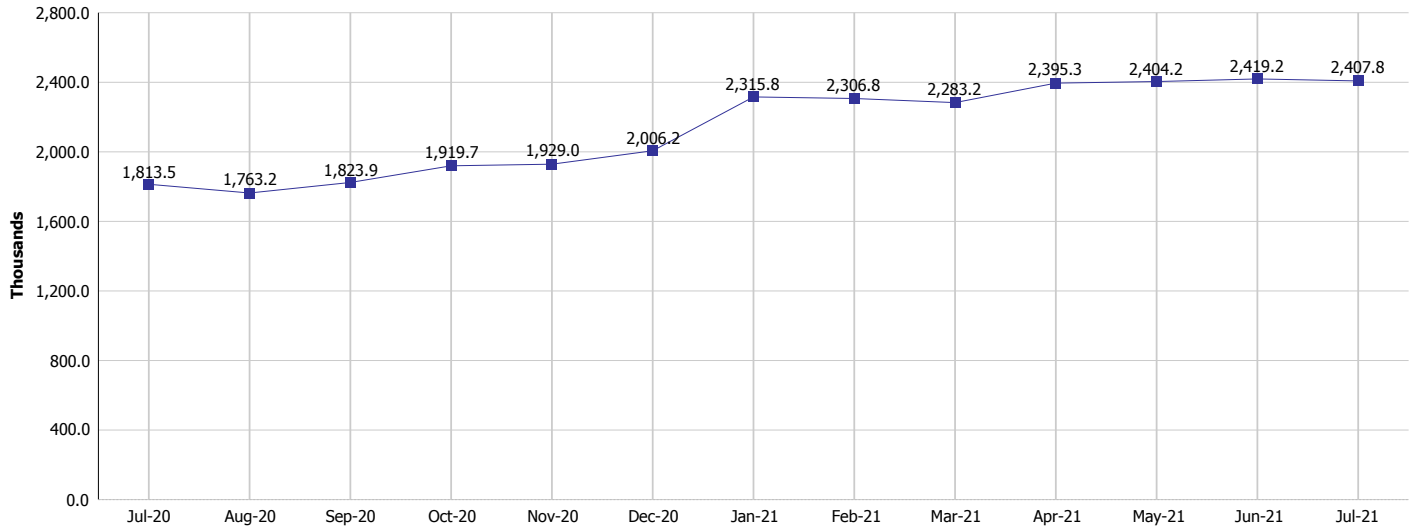
Monthly Management Report

Reporting Month: July 2021

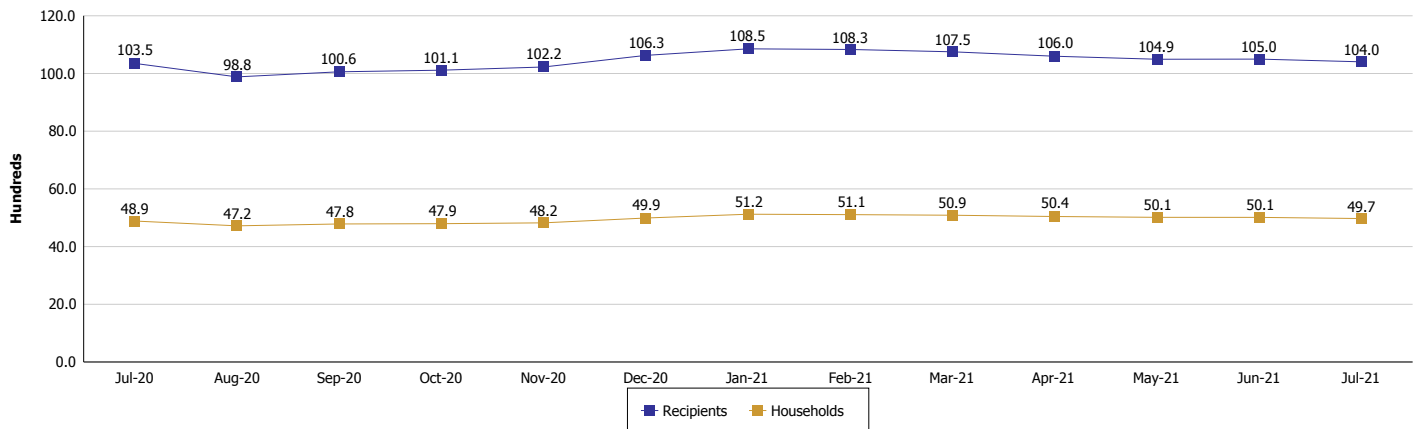
Location: Howard County

SUPPLEMENTAL NUTRITION ASSISTANCE PROGRAM (SNAP)

SNAP Issuance



SNAP Households and Recipients



Note:

All data July 2014 and following will be broken out according to the new DFR region structure effective July 1 2021.



DIVISION OF FAMILY RESOURCES

Monthly Management Report

Reporting Month: July 2021

Location: Howard County

HIP 2.0 and SNAP

	July 2021	June 2021	July 2020	Annual Change
Total HIP 2.0 Members	9,598	9,489	7,235	32.66%
HIP Members also SNAP Recipients	3,164	3,181	2,820	12.20%
Percentage HIP Members SNAP Recipients	33.0%	33.5%	39.0%	-6.01
HIP Members SNAP ABAWDs	0	0	10	-100.00%
Percentage HIP Members SNAP ABAWDs	0	0	0.1%	-0.1

Note:

All data July 2014 and following will be broken out according to the new DFR region structure effective July 1 2014.



DIVISION OF FAMILY RESOURCES

Monthly Management Report

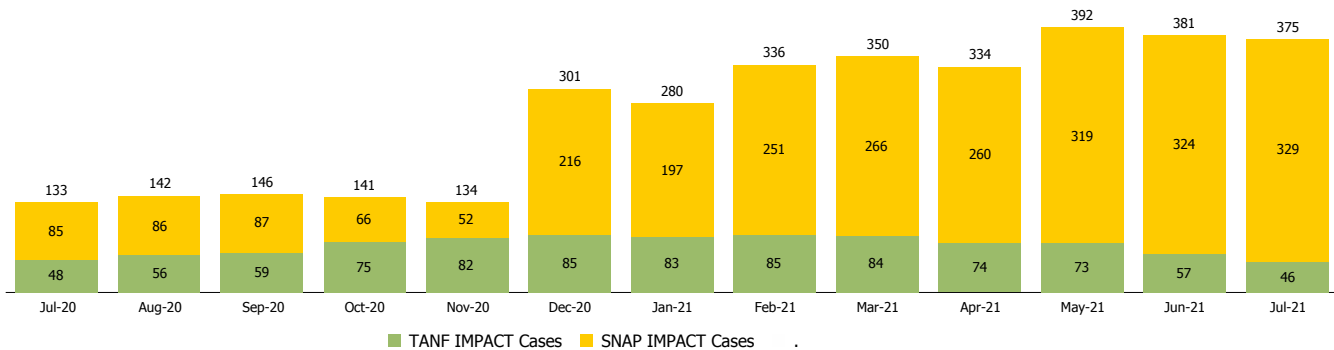
Reporting Month: July 2021

Location: Howard County

INDIANA MANPOWER PLACEMENT AND COMPREHENSIVE TRAINING (IMPACT)

	July 2021	June 2021	July 2020	Annual Change
Number of IMPACT cases	375	381	133	181.95%
Number of TANF IMPACT adults	46	57	48	-4.17%
Number of SNAP IMPACT Cases	329	324	85	287.06%
Total number of adults employed	46	30	12	283.33%
Number of TANF IMPACT adults newly employed (within past 30 days)	4	1	2	100.00%
Number of SNAP IMPACT adults employed	42	29	10	320.00%
Total number of adults ineligible due to employment	32	23	171	-81.29%
Number of TANF adults ineligible due to employment	0	1	3	-100.00%
Number of SNAP adults ineligible due to employment	32	22	168	-80.95%

IMPACT Caseloads
(SNAP, TANF, Total Caseload)



Note:

All data July 2014 and following will be broken out according to the new DFR region structure effective July 1 2014.