



DIVISION OF FAMILY RESOURCES

Hamilton County Monthly Management Report December 2023

State of Indiana

Eric Holcomb
Governor

Family and Social Services Administration

Dan Rusyniak, MD
Secretary

Division of Family Resources

Adrienne Shields
Director

For questions regarding data on this report contact:
office.Communications@fssa.IN.gov



State of Indiana

Published January 2024



DIVISION OF FAMILY RESOURCES

Monthly Management Report

Reporting Month: December 2023

Location: Hamilton County

TEMPORARY ASSISTANCE FOR NEEDY FAMILIES (TANF)

Child-Only and One-Parent Families	December 2023	November 2023	December 2022	Annual Change
Number of families receiving TANF Grants	43	45	32	34.38%
Total number of grant recipients	79	83	59	33.90%
Number of adult grant recipients	20	21	9	122.22%
Number of child grant recipients	59	62	50	18.00%
Total payments	\$9,294	\$9,687	\$6,284	47.90%
Average payment per case	\$216.14	\$215.27	\$196.38	10.06%
Average payment per recipient	\$117.65	\$116.71	\$106.51	10.46%
Number of cases with benefits reduced to zero	0	0	1	-100.00%
Number of recipients with benefits reduced to zero	0	0	1	-100.00%
Number of adult recipients with benefit reduced to zero	0	0	0	0%
Number of child recipients with benefit reduced to zero	0	0	1	-100.00%

Two-Parent Families	December 2023	November 2023	December 2022	Annual Change
Number of families receiving TANF Grants	8	8	8	0.00%
Total number of grant recipients	32	32	34	-5.88%
Number of adult grant recipients	15	15	15	0.00%
Number of child grant recipients	17	17	19	-10.53%
Total payments	\$2,683	\$2,308	\$2,888	-7.10%
Average payment per case	\$335.38	\$288.50	\$361.00	-7.10%
Average payment per recipient	\$83.84	\$72.12	\$84.94	-1.29%
Number of cases with benefits reduced to zero	0	0	0	0%
Number of recipients with benefits reduced to zero	0	0	0	0%
Number of adult recipients with benefit reduced to zero	0	0	0	0%
Number of child recipients with benefit reduced to zero	0	0	0	0%

Note:

For August 2021, a one time payment of \$400 per recipient was included in the Total payments and Average payments. TANF section rules changed to reflect Federal reporting logic effective September 2021. For August 2022, a one-time payment of \$269 per recipient was included in the Total payments and Average payments.

Source:



DIVISION OF FAMILY RESOURCES

Monthly Management Report

Reporting Month: December 2023

Location: Hamilton County

TANF - APPLICATIONS

	December 2023	November 2023	December 2022	Annual Change
Number of Applications	125	127	140	-10.71%

TANF - RECIPIENTS BY ZIP CODE

ZIP Code	Households	Recipients
46032	5	13
46033	1	3
46034	1	1
46037	4	11
46038	9	17
46060	15	33
46062	3	6
46074	12	26
46077	1	1
Total	51	111



DIVISION OF FAMILY RESOURCES

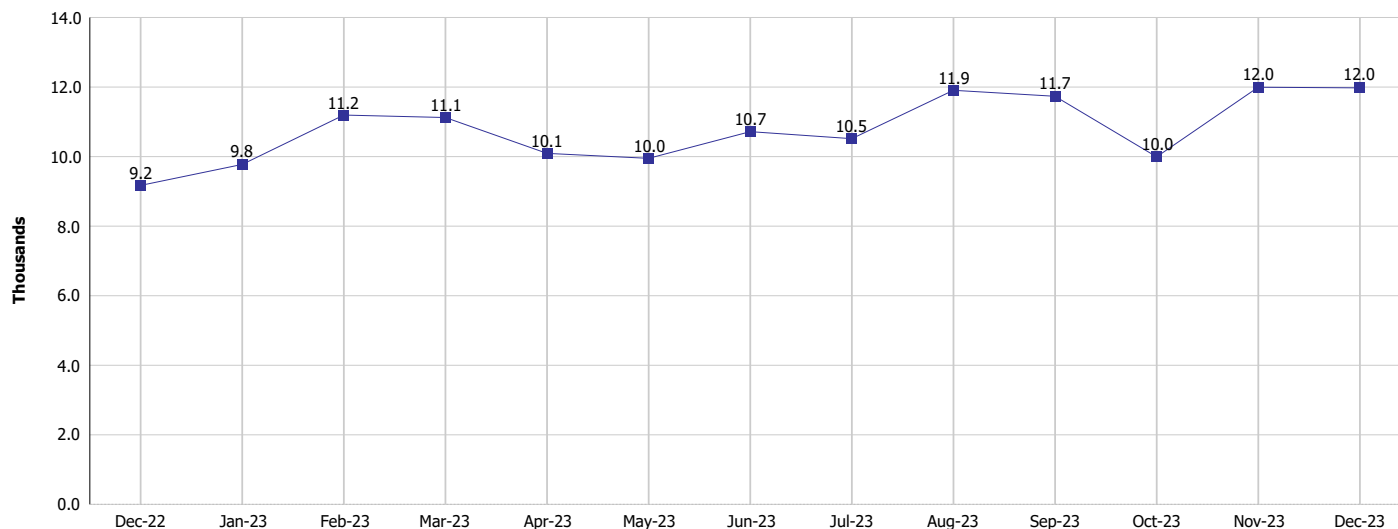
Monthly Management Report

Reporting Month: December 2023

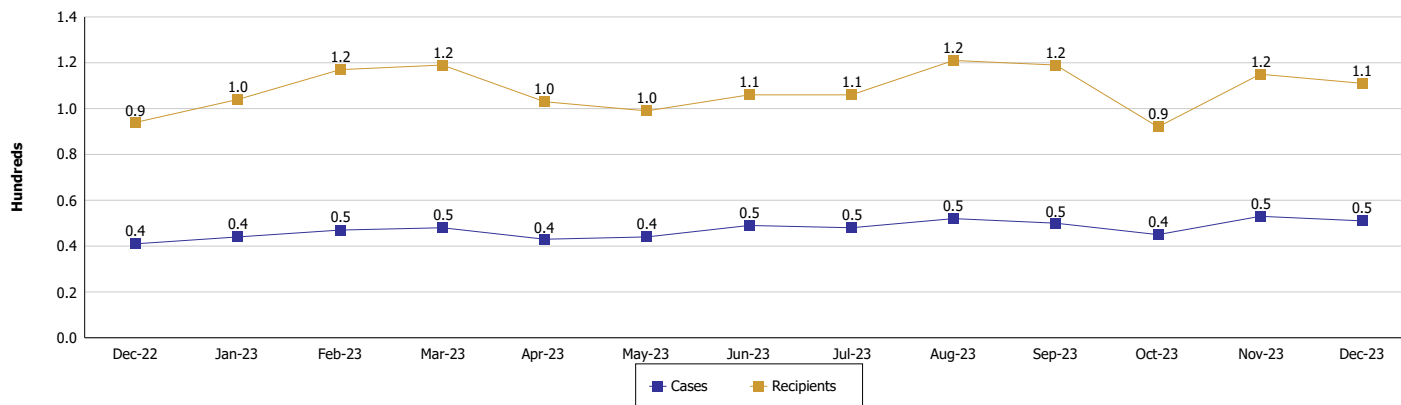
Location: Hamilton County

TEMPORARY ASSISTANCE FOR NEEDY FAMILIES (TANF)

TANF Regular And TANF Two-Parent Cash Assistance



TANF Cases and Recipients (TANF Regular and TANF Two-Parent)



Note:

For August 2021, a one time payment of \$400 per recipient was included in the Total payments and Average payments. TANF section rules changed to reflect Federal reporting logic effective September 2021. For August 2022, a one-time payment of \$269 per recipient was included in the Total payments and Average payments.



DIVISION OF FAMILY RESOURCES

Monthly Management Report

Reporting Month: December 2023

Location: Hamilton County

SUPPLEMENTAL NUTRITION ASSISTANCE PROGRAM (SNAP)

	December 2023	November 2023	December 2022	Annual Change
Total issuance	\$1,622,669	\$1,629,596	\$1,521,067	6.68%
Number of households receiving SNAP benefits	3,592	3,565	3,461	3.79%
Number of recipients	7,978	7,937	7,809	2.16%
Average issuance per household	\$451.75	\$457.11	\$439.49	2.79%
Average issuance per recipient	\$203.39	\$205.32	\$194.78	4.42%
Number of Applications	486	570	491	-1.02%



DIVISION OF FAMILY RESOURCES

Monthly Management Report

Reporting Month: December 2023

Location: Hamilton County

SNAP - RECIPIENTS BY ZIP CODE

ZIP Code	Households	Recipients	ZIP Code	Households	Recipients
46011	2	3	Totals	3,592	7,978
46030	70	163			
46031	43	82			
46032	296	567			
46033	148	337			
46034	97	178			
46036	2	4			
46037	364	813			
46038	394	969			
46040	45	107			
46052	1	4			
46055	31	56			
46060	1,031	2,236			
46061	2	3			
46062	359	767			
46069	138	319			
46074	415	1,025			
46077	8	14			
46082	6	7			
46143	1	2			
46168	2	4			
46202	1	1			
46203	1	2			
46205	2	2			
46208	1	3			
46214	1	5			
46220	1	1			
46222	2	9			
46227	1	1			
46228	1	2			
46237	1	1			
46240	2	4			
46241	1	2			
46250	4	6			
46254	1	1			
46256	7	18			
46260	1	1			
46268	2	10			
46280	95	219			
46290	3	5			
46562	1	3			
46582	1	1			
46902	2	8			
47424	1	1			
47842	1	1			
None	3	11			



DIVISION OF FAMILY RESOURCES

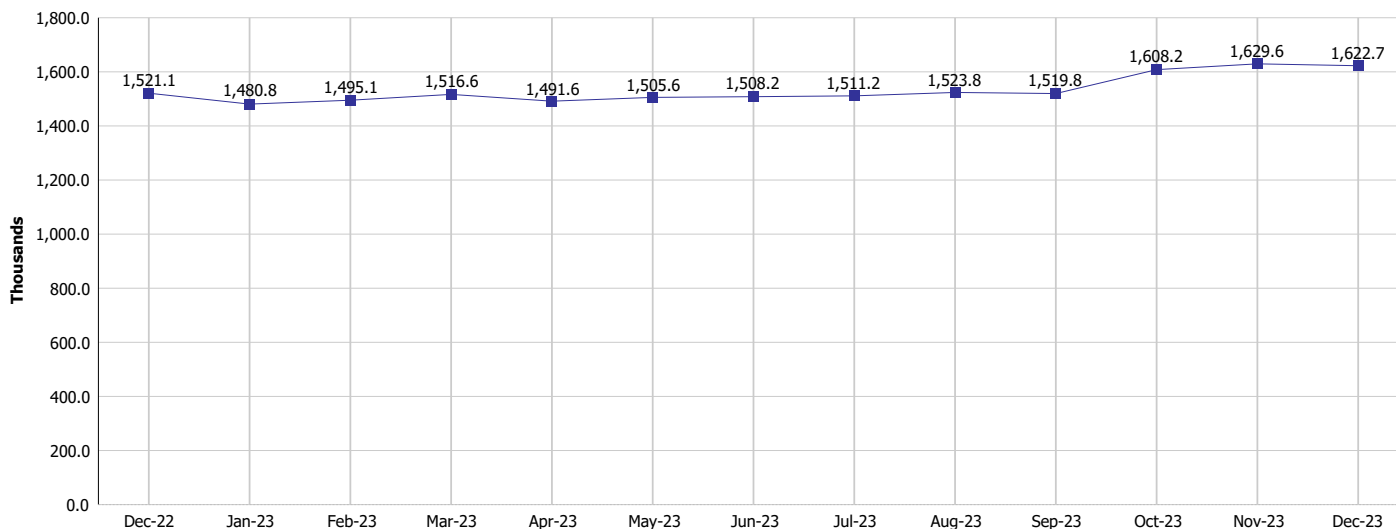
Monthly Management Report

Reporting Month: December 2023

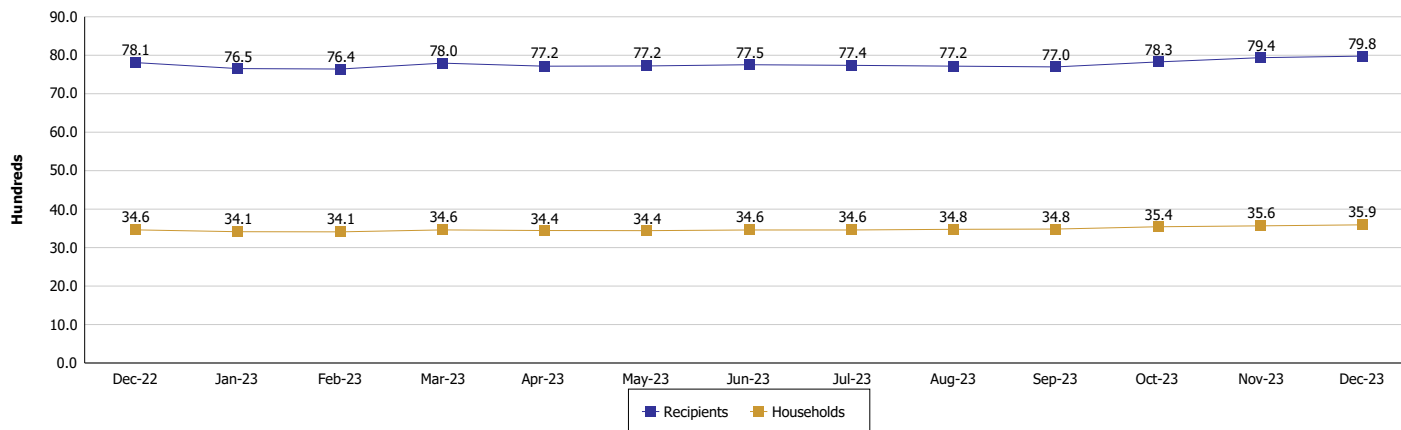
Location: Hamilton County

SUPPLEMENTAL NUTRITION ASSISTANCE PROGRAM (SNAP)

SNAP Issuance



SNAP Households and Recipients



Note:

Run Date: Jan 12, 2024



DIVISION OF FAMILY RESOURCES

Monthly Management Report

Reporting Month: December 2023

Location: Hamilton County

HIP 2.0 and SNAP

	December 2023	November 2023	December 2022	Annual Change
Total HIP 2.0 Members	18,778	18,870	19,159	-1.99%
HIP Members also SNAP Recipients	2,340	2,326	2,299	1.78%
Percentage HIP Members SNAP Recipients	12.5%	12.3%	12.0%	0.46
HIP Members SNAP ABAWDs	94	91	104	-9.62%
Percentage HIP Members SNAP ABAWDs	0.5%	0.5%	0.5%	0.0



DIVISION OF FAMILY RESOURCES

Monthly Management Report

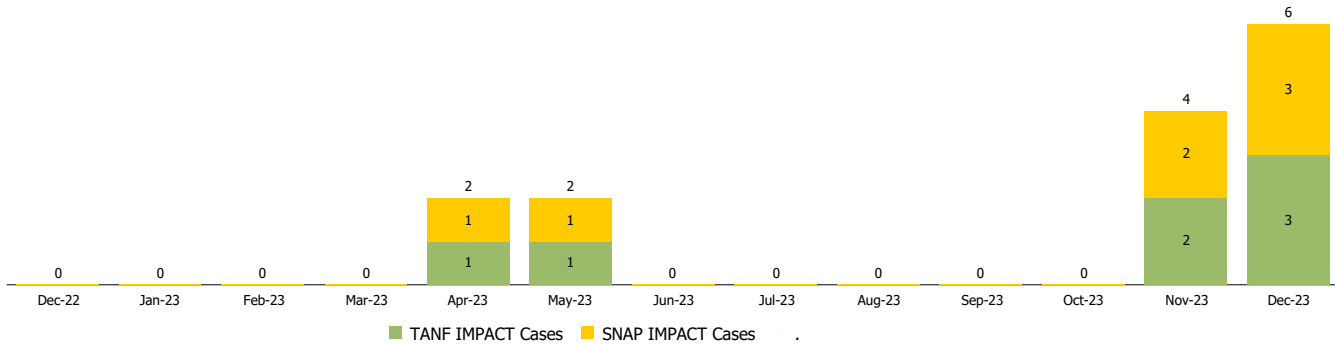
Reporting Month: December 2023

Location: Hamilton County

INDIANA MANPOWER PLACEMENT AND COMPREHENSIVE TRAINING (IMPACT)

	December 2023	November 2023	December 2022	Annual Change
Number of IMPACT cases	6	4	0	
Number of TANF IMPACT adults	3	2	0	
Number of SNAP IMPACT Cases	3	2	0	
Total number of adults employed	20	13	21	-4.76%
Number of TANF IMPACT adults newly employed (within past 30 days)	0	1	1	-100.00%
Number of SNAP IMPACT adults employed	20	12	20	0.00%
Total number of adults ineligible due to employment	20	18	18	11.11%
Number of TANF adults ineligible due to employment	1	0	0	
Number of SNAP adults ineligible due to employment	19	18	18	5.56%

IMPACT Caseloads
(SNAP, TANF, Total Caseload)



Note:

Effective January 2022, these numbers have been adjusted to reflect only those actually participating in IMPACT.