



DIVISION OF FAMILY RESOURCES

Greene County Monthly Management Report December 2023

State of Indiana

Eric Holcomb
Governor

Family and Social Services Administration

Dan Rusyniak, MD
Secretary

Division of Family Resources

Adrienne Shields
Director

For questions regarding data on this report contact:
office.Communications@fssa.IN.gov



State of Indiana

Published January 2024



DIVISION OF FAMILY RESOURCES

Monthly Management Report

Reporting Month: December 2023

Location: Greene County

TEMPORARY ASSISTANCE FOR NEEDY FAMILIES (TANF)

Child-Only and One-Parent Families	December 2023	November 2023	December 2022	Annual Change
Number of families receiving TANF Grants	14	15	14	0.00%
Total number of grant recipients	28	29	27	3.70%
Number of adult grant recipients	5	5	6	-16.67%
Number of child grant recipients	23	24	21	9.52%
Total payments	\$2,929	\$3,026	\$2,749	6.55%
Average payment per case	\$209.21	\$201.73	\$196.36	6.55%
Average payment per recipient	\$104.61	\$104.34	\$101.81	2.74%
Number of cases with benefits reduced to zero	0	0	0	0%
Number of recipients with benefits reduced to zero	0	0	0	0%
Number of adult recipients with benefit reduced to zero	0	0	0	0%
Number of child recipients with benefit reduced to zero	0	0	0	0%

Two-Parent Families	December 2023	November 2023	December 2022	Annual Change
Number of families receiving TANF Grants	0	0	0	0%
Total number of grant recipients	0	0	0	0%
Number of adult grant recipients	0	0	0	0%
Number of child grant recipients	0	0	0	0%
Total payments	\$0	\$0	\$0	0%
Average payment per case	\$0.00	\$0.00	\$0.00	0.00%
Average payment per recipient	\$0.00	\$0.00	\$0.00	0.00%
Number of cases with benefits reduced to zero	0	0	0	0%
Number of recipients with benefits reduced to zero	0	0	0	0%
Number of adult recipients with benefit reduced to zero	0	0	0	0%
Number of child recipients with benefit reduced to zero	0	0	0	0%

Note:

For August 2021, a one time payment of \$400 per recipient was included in the Total payments and Average payments. TANF section rules changed to reflect Federal reporting logic effective September 2021. For August 2022, a one-time payment of \$269 per recipient was included in the Total payments and Average payments.

Source:



DIVISION OF FAMILY RESOURCES

Monthly Management Report

Reporting Month: December 2023

Location: Greene County

TANF - APPLICATIONS

	December 2023	November 2023	December 2022	Annual Change
Number of Applications	18	22	17	5.88%

TANF - RECIPIENTS BY ZIP CODE

ZIP Code	Households	Recipients
47424	6	12
47438	3	7
47441	2	2
47443	1	3
47459	1	1
47471	1	3
Total	14	28



DIVISION OF FAMILY RESOURCES

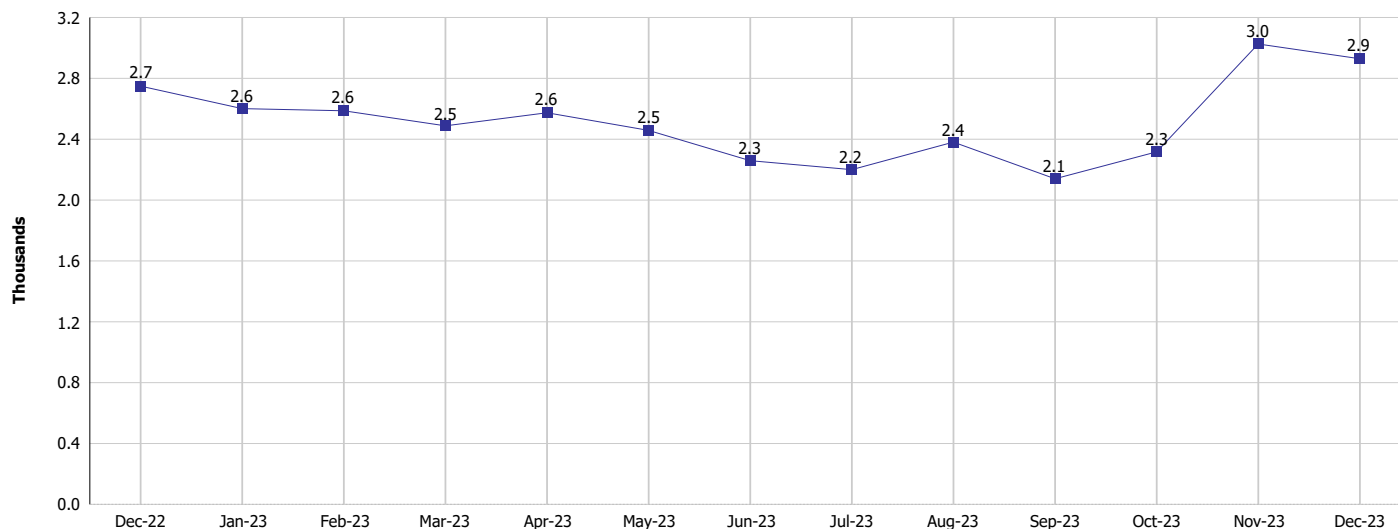
Monthly Management Report

Reporting Month: December 2023

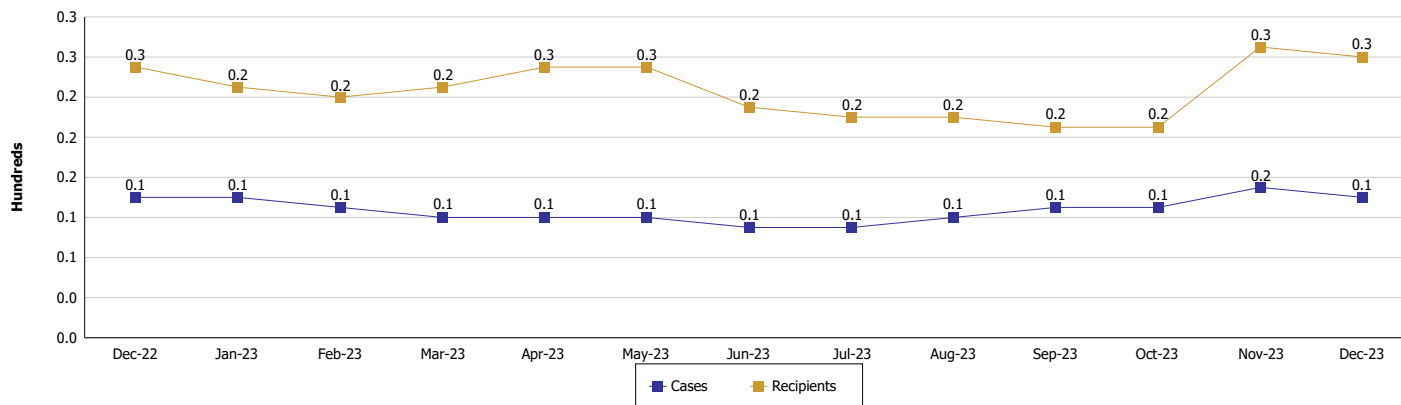
Location: Greene County

TEMPORARY ASSISTANCE FOR NEEDY FAMILIES (TANF)

TANF Regular And TANF Two-Parent Cash Assistance



TANF Cases and Recipients (TANF Regular and TANF Two-Parent)



Note:

For August 2021, a one time payment of \$400 per recipient was included in the Total payments and Average payments. TANF section rules changed to reflect Federal reporting logic effective September 2021. For August 2022, a one-time payment of \$269 per recipient was included in the Total payments and Average payments.



DIVISION OF FAMILY RESOURCES

Monthly Management Report

Reporting Month: December 2023

Location: Greene County

SUPPLEMENTAL NUTRITION ASSISTANCE PROGRAM (SNAP)

	December 2023	November 2023	December 2022	Annual Change
Total issuance	\$493,692	\$509,279	\$544,429	-9.32%
Number of households receiving SNAP benefits	1,328	1,343	1,466	-9.41%
Number of recipients	2,641	2,711	3,014	-12.38%
Average issuance per household	\$371.76	\$379.21	\$371.37	0.11%
Average issuance per recipient	\$186.93	\$187.86	\$180.63	3.49%
Number of Applications	154	182	162	-4.94%



DIVISION OF FAMILY RESOURCES

Monthly Management Report

Reporting Month: December 2023

Location: Greene County

SNAP - RECIPIENTS BY ZIP CODE

ZIP Code	Households	Recipients
46065	1	7
46135	1	1
47401	1	1
47403	10	20
47424	311	638
47438	196	399
47441	428	835
47443	64	141
47445	4	6
47449	17	40
47453	11	19
47457	3	3
47459	93	180
47460	3	5
47462	28	48
47465	34	71
47471	115	217
47529	2	2
47546	1	1
47578	2	3
47802	1	1
47848	1	2
None	1	1
Totals	1,328	2,641



DIVISION OF FAMILY RESOURCES

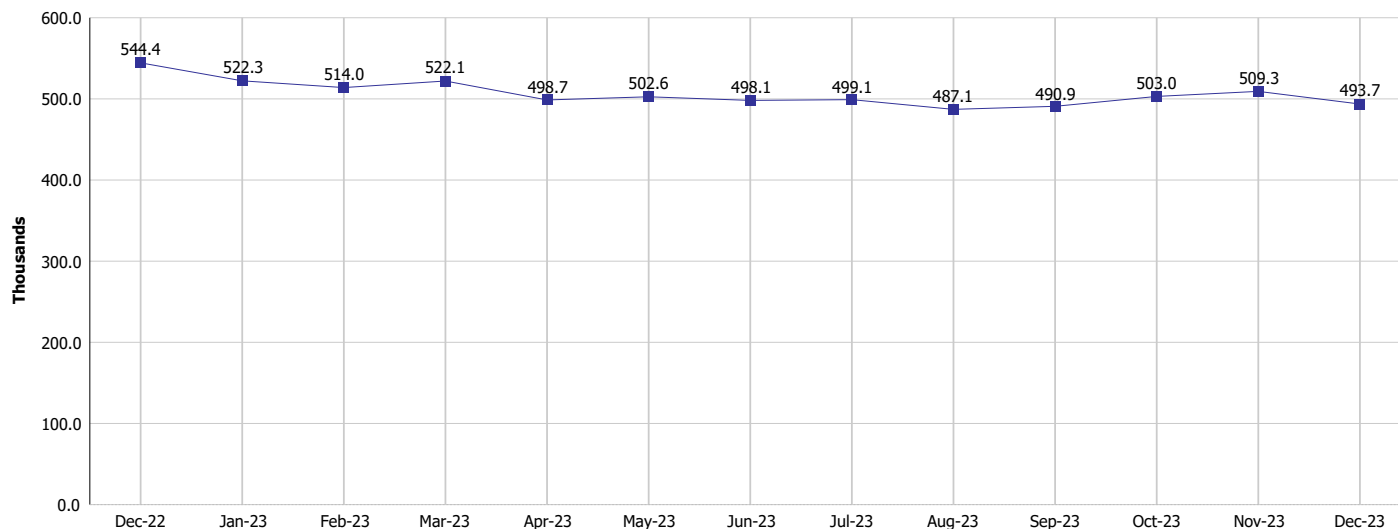
Monthly Management Report

Reporting Month: December 2023

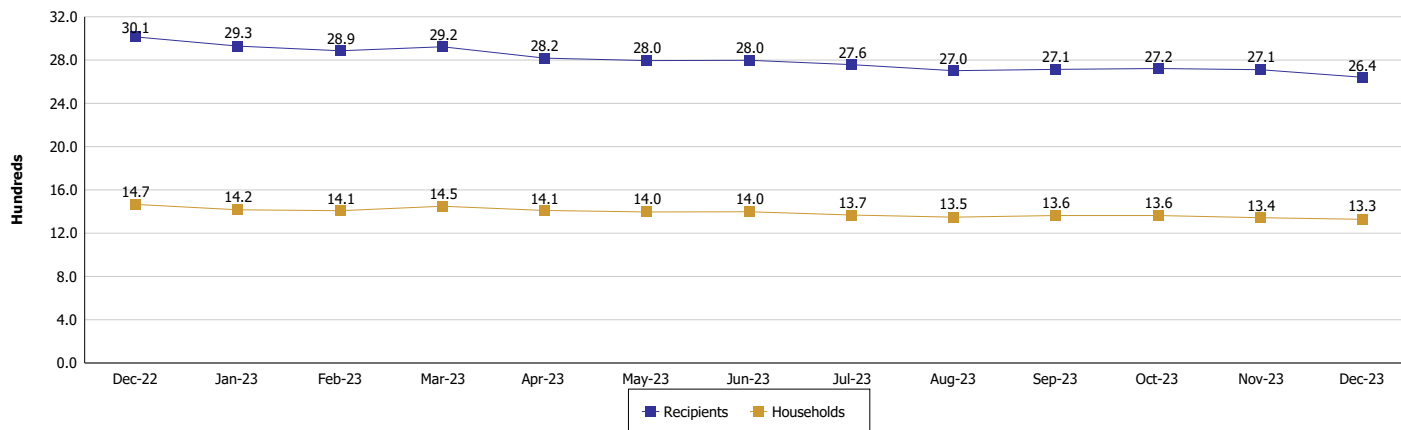
Location: Greene County

SUPPLEMENTAL NUTRITION ASSISTANCE PROGRAM (SNAP)

SNAP Issuance



SNAP Households and Recipients



Note:

Run Date: Jan 12, 2024



DIVISION OF FAMILY RESOURCES

Monthly Management Report

Reporting Month: December 2023

Location: Greene County

HIP 2.0 and SNAP

	December 2023	November 2023	December 2022	Annual Change
Total HIP 2.0 Members	3,538	3,583	4,161	-14.97%
HIP Members also SNAP Recipients	869	892	960	-9.48%
Percentage HIP Members SNAP Recipients	24.6%	24.9%	23.1%	1.49
HIP Members SNAP ABAWDs	60	59	66	-9.09%
Percentage HIP Members SNAP ABAWDs	1.7%	1.6%	1.6%	0.1

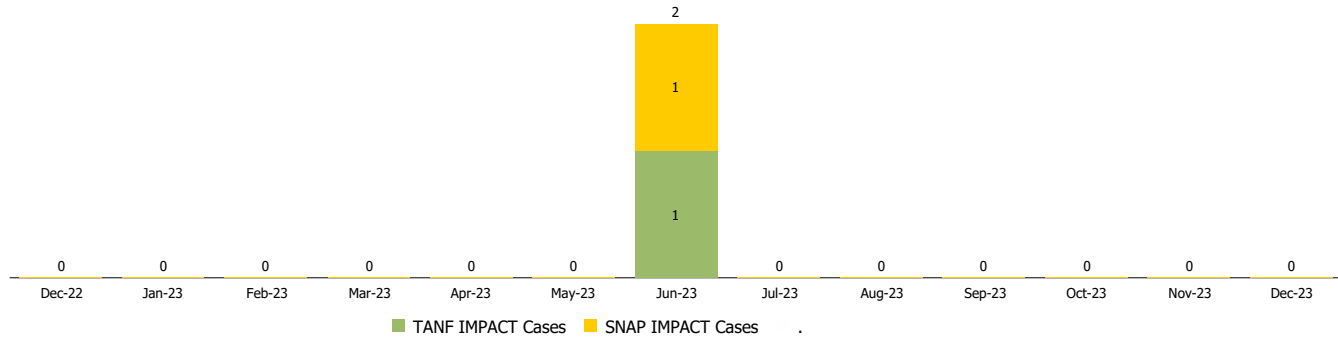
Monthly Management Report

Reporting Month: December 2023 Location: Greene County

INDIANA MANPOWER PLACEMENT AND COMPREHENSIVE TRAINING (IMPACT)

	December 2023	November 2023	December 2022	Annual Change
Number of IMPACT cases	0	0	0	
Number of TANF IMPACT adults	0	0	0	
Number of SNAP IMPACT Cases	0	0	0	
Total number of adults employed	2	4	15	-86.67%
Number of TANF IMPACT adults newly employed (within past 30 days)	0	0	0	
Number of SNAP IMPACT adults employed	2	4	15	-86.67%
Total number of adults ineligible due to employment	11	11	5	120.00%
Number of TANF adults ineligible due to employment	1	0	0	
Number of SNAP adults ineligible due to employment	10	11	5	100.00%

IMPACT Caseloads
(SNAP, TANF, Total Caseload)



Note: Effective January 2022, these numbers have been adjusted to reflect only those actually participating in IMPACT.