



DIVISION OF FAMILY RESOURCES

Grant County Monthly Management Report December 2023

State of Indiana

Eric Holcomb
Governor

Family and Social Services Administration

Dan Rusyniak, MD
Secretary

Division of Family Resources

Adrienne Shields
Director

For questions regarding data on this report contact:
office.Communications@fssa.IN.gov



State of Indiana

Published January 2024



DIVISION OF FAMILY RESOURCES

Monthly Management Report

Reporting Month: December 2023

Location: Grant County

TEMPORARY ASSISTANCE FOR NEEDY FAMILIES (TANF)

Child-Only and One-Parent Families	December 2023	November 2023	December 2022	Annual Change
Number of families receiving TANF Grants	67	67	63	6.35%
Total number of grant recipients	124	127	122	1.64%
Number of adult grant recipients	8	6	7	14.29%
Number of child grant recipients	116	121	115	0.87%
Total payments	\$13,439	\$13,856	\$12,221	9.97%
Average payment per case	\$200.58	\$206.81	\$193.98	3.40%
Average payment per recipient	\$108.38	\$109.10	\$100.17	8.19%
Number of cases with benefits reduced to zero	2	1	1	100.00%
Number of recipients with benefits reduced to zero	5	1	1	400.00%
Number of adult recipients with benefit reduced to zero	0	0	0	0%
Number of child recipients with benefit reduced to zero	5	1	1	400.00%

Two-Parent Families	December 2023	November 2023	December 2022	Annual Change
Number of families receiving TANF Grants	0	2	2	-100.00%
Total number of grant recipients	0	7	8	-100.00%
Number of adult grant recipients	0	4	1	-100.00%
Number of child grant recipients	0	3	7	-100.00%
Total payments	\$0	\$634	\$661	-100.00%
Average payment per case	\$0.00	\$317.00	\$330.50	-100.00%
Average payment per recipient	\$0.00	\$90.57	\$82.62	-100.00%
Number of cases with benefits reduced to zero	0	0	0	0%
Number of recipients with benefits reduced to zero	0	0	0	0%
Number of adult recipients with benefit reduced to zero	0	0	0	0%
Number of child recipients with benefit reduced to zero	0	0	0	0%

Note:

For August 2021, a one time payment of \$400 per recipient was included in the Total payments and Average payments. TANF section rules changed to reflect Federal reporting logic effective September 2021. For August 2022, a one-time payment of \$269 per recipient was included in the Total payments and Average payments.

Source:



DIVISION OF FAMILY RESOURCES

Monthly Management Report

Reporting Month: December 2023

Location: Grant County

TANF - APPLICATIONS

	December 2023	November 2023	December 2022	Annual Change
Number of Applications	54	43	67	-19.40%

TANF - RECIPIENTS BY ZIP CODE

ZIP Code	Households	Recipients
46919	2	3
46928	1	3
46930	3	7
46933	1	1
46938	3	3
46952	18	39
46953	36	64
46986	1	1
46987	1	2
47348	1	1
Total	67	124



DIVISION OF FAMILY RESOURCES

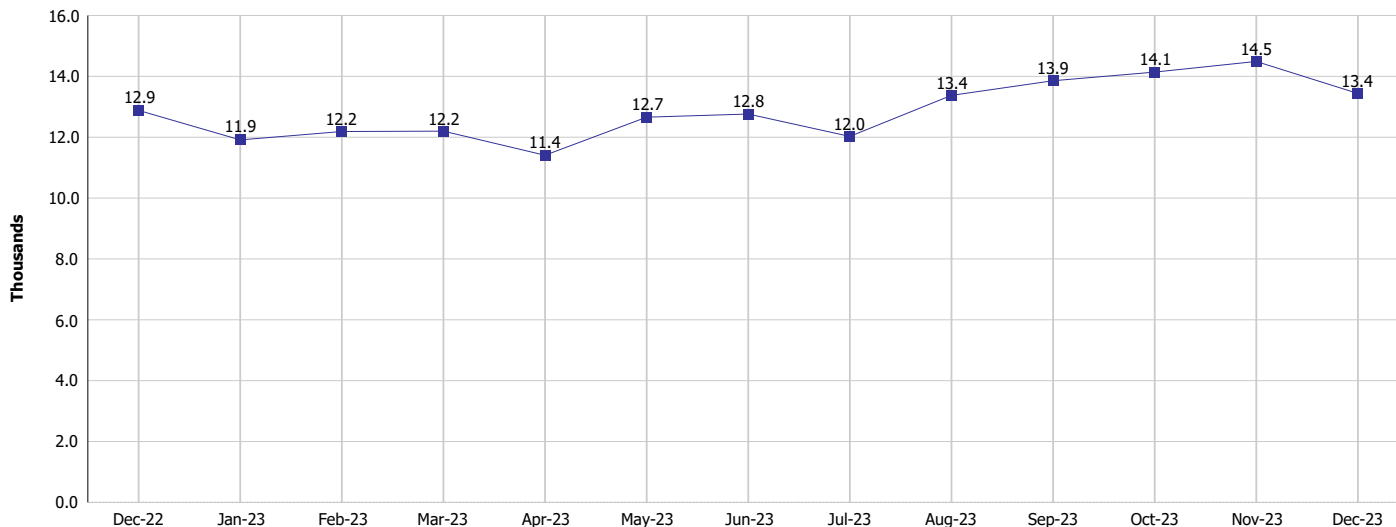
Monthly Management Report

Reporting Month: December 2023

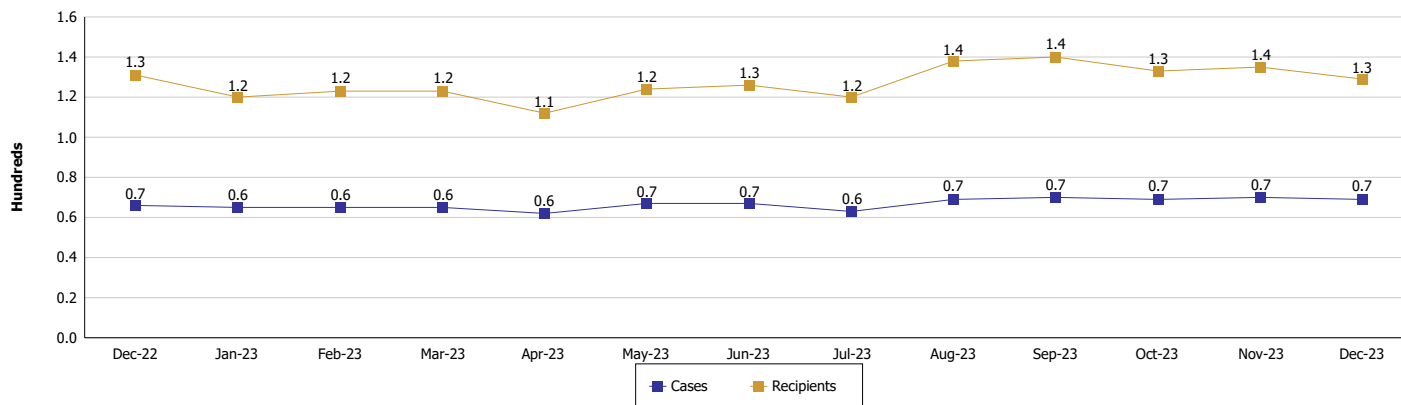
Location: Grant County

TEMPORARY ASSISTANCE FOR NEEDY FAMILIES (TANF)

TANF Regular And TANF Two-Parent Cash Assistance



TANF Cases and Recipients (TANF Regular and TANF Two-Parent)



Note:

For August 2021, a one time payment of \$400 per recipient was included in the Total payments and Average payments. TANF section rules changed to reflect Federal reporting logic effective September 2021. For August 2022, a one-time payment of \$269 per recipient was included in the Total payments and Average payments.



DIVISION OF FAMILY RESOURCES

Monthly Management Report

Reporting Month: December 2023

Location: Grant County

SUPPLEMENTAL NUTRITION ASSISTANCE PROGRAM (SNAP)

	December 2023	November 2023	December 2022	Annual Change
Total issuance	\$1,948,266	\$1,927,246	\$1,766,865	10.27%
Number of households receiving SNAP benefits	4,826	4,780	4,632	4.19%
Number of recipients	9,899	9,798	9,451	4.74%
Average issuance per household	\$403.7	\$403.19	\$381.45	5.83%
Average issuance per recipient	\$196.81	\$196.7	\$186.95	5.27%
Number of Applications	482	500	527	-8.54%



DIVISION OF FAMILY RESOURCES

Monthly Management Report

Reporting Month: December 2023

Location: Grant County

SNAP - RECIPIENTS BY ZIP CODE

ZIP Code	Households	Recipients
46036	5	7
46070	1	2
46123	1	3
46143	1	2
46229	1	1
46816	1	2
46902	1	1
46919	64	148
46928	205	425
46930	20	47
46933	360	777
46935	1	1
46938	143	313
46952	1,534	2,969
46953	2,244	4,632
46957	19	41
46986	47	109
46987	22	46
46989	80	181
46991	66	166
46992	1	1
47302	2	5
47348	2	3
47446	1	3
None	4	14
Totals	4,826	9,899



DIVISION OF FAMILY RESOURCES

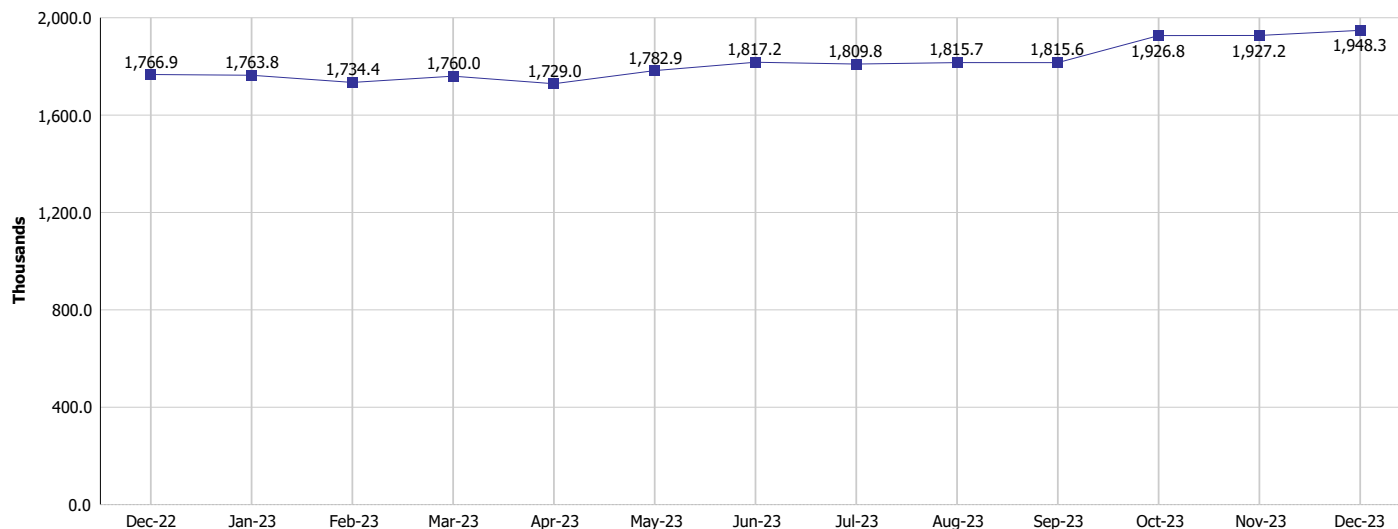
Monthly Management Report

Reporting Month: December 2023

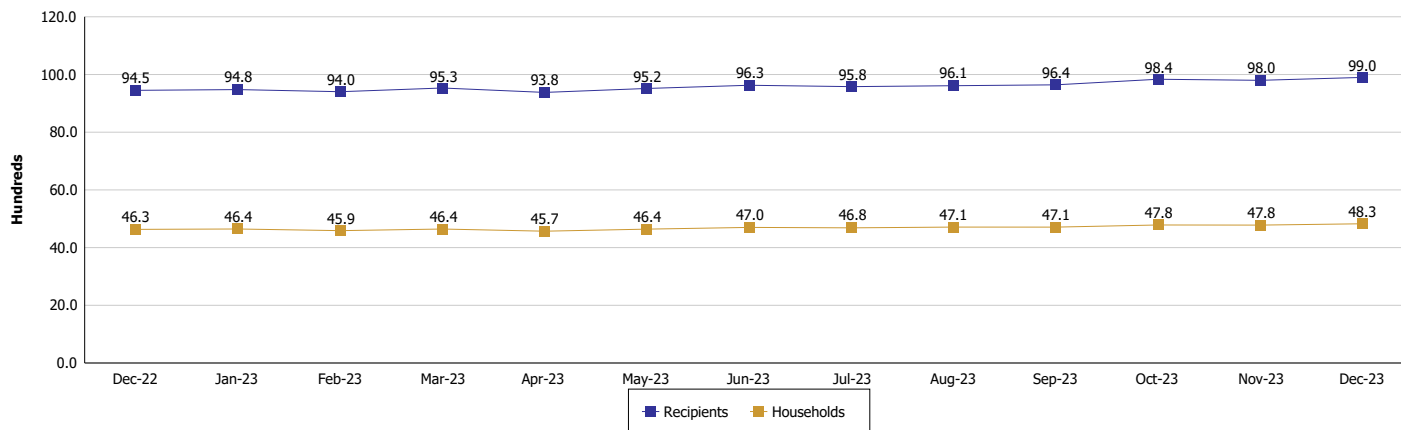
Location: Grant County

SUPPLEMENTAL NUTRITION ASSISTANCE PROGRAM (SNAP)

SNAP Issuance



SNAP Households and Recipients



Note:

Run Date: Jan 12, 2024



DIVISION OF FAMILY RESOURCES

Monthly Management Report

Reporting Month: December 2023

Location: Grant County

HIP 2.0 and SNAP

	December 2023	November 2023	December 2022	Annual Change
Total HIP 2.0 Members	9,523	9,635	9,970	-4.48%
HIP Members also SNAP Recipients	3,212	3,201	3,030	6.01%
Percentage HIP Members SNAP Recipients	33.7%	33.2%	30.4%	3.34
HIP Members SNAP ABAWDs	223	225	229	-2.62%
Percentage HIP Members SNAP ABAWDs	2.3%	2.3%	2.3%	0.0



DIVISION OF FAMILY RESOURCES

Monthly Management Report

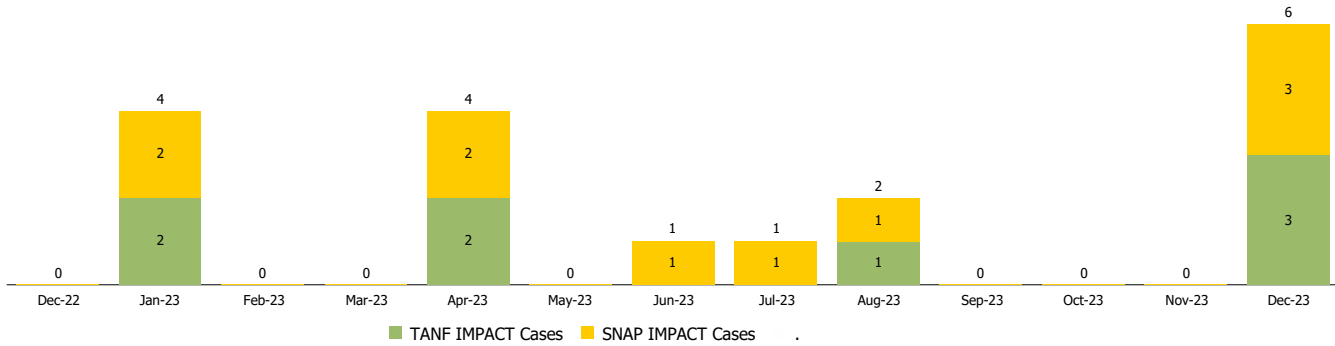
Reporting Month: December 2023

Location: Grant County

INDIANA MANPOWER PLACEMENT AND COMPREHENSIVE TRAINING (IMPACT)

	December 2023	November 2023	December 2022	Annual Change
Number of IMPACT cases	6	0	0	
Number of TANF IMPACT adults	3	0	0	
Number of SNAP IMPACT Cases	3	0	0	
Total number of adults employed	18	19	37	-51.35%
Number of TANF IMPACT adults newly employed (within past 30 days)	0	0	0	
Number of SNAP IMPACT adults employed	18	19	37	-51.35%
Total number of adults ineligible due to employment	16	21	17	-5.88%
Number of TANF adults ineligible due to employment	2	1	1	100.00%
Number of SNAP adults ineligible due to employment	14	20	16	-12.50%

IMPACT Caseloads
(SNAP, TANF, Total Caseload)



Note:

Effective January 2022, these numbers have been adjusted to reflect only those actually participating in IMPACT.