



## DIVISION OF FAMILY RESOURCES

# Floyd County Monthly Management Report December 2023

### State of Indiana

Eric Holcomb  
Governor

### Family and Social Services Administration

Dan Rusyniak, MD  
Secretary

### Division of Family Resources

Adrienne Shields  
Director

For questions regarding data on this report contact:  
[office.Communications@fssa.IN.gov](mailto:office.Communications@fssa.IN.gov)



## State of Indiana

Published January 2024



## DIVISION OF FAMILY RESOURCES

### Monthly Management Report

Reporting Month: December 2023

Location: Floyd County

#### TEMPORARY ASSISTANCE FOR NEEDY FAMILIES (TANF)

Child-Only and One-Parent Families	December 2023	November 2023	December 2022	Annual Change
Number of families receiving TANF Grants	87	87	65	33.85%
Total number of grant recipients	186	183	111	67.57%
Number of adult grant recipients	34	35	15	126.67%
Number of child grant recipients	152	148	96	58.33%
Total payments	\$19,424	\$19,210	\$11,829	64.21%
Average payment per case	\$223.26	\$220.80	\$181.98	22.68%
Average payment per recipient	\$104.43	\$104.97	\$106.57	-2.01%
Number of cases with benefits reduced to zero	2	2	0	0%
Number of recipients with benefits reduced to zero	5	5	0	0%
Number of adult recipients with benefit reduced to zero	1	1	0	0%
Number of child recipients with benefit reduced to zero	4	4	0	0%

Two-Parent Families	December 2023	November 2023	December 2022	Annual Change
Number of families receiving TANF Grants	0	0	7	-100.00%
Total number of grant recipients	0	0	16	-100.00%
Number of adult grant recipients	0	0	5	-100.00%
Number of child grant recipients	0	0	11	-100.00%
Total payments	\$0	\$0	\$1,650	-100.00%
Average payment per case	\$0.00	\$0.00	\$235.71	-100.00%
Average payment per recipient	\$0.00	\$0.00	\$103.12	-100.00%
Number of cases with benefits reduced to zero	0	0	0	0%
Number of recipients with benefits reduced to zero	0	0	0	0%
Number of adult recipients with benefit reduced to zero	0	0	0	0%
Number of child recipients with benefit reduced to zero	0	0	0	0%

**Note:**

For August 2021, a one time payment of \$400 per recipient was included in the Total payments and Average payments. TANF section rules changed to reflect Federal reporting logic effective September 2021. For August 2022, a one-time payment of \$269 per recipient was included in the Total payments and Average payments.

Source:



## DIVISION OF FAMILY RESOURCES

### Monthly Management Report

Reporting Month: December 2023

Location: Floyd County

#### TANF - APPLICATIONS

	December 2023	November 2023	December 2022	Annual Change
<b>Number of Applications</b>	85	70	69	23.19%

#### TANF - RECIPIENTS BY ZIP CODE

ZIP Code	Households	Recipients
47119	1	2
47122	1	4
47136	1	2
47150	83	176
47172	1	2
<b>Total</b>	<b>87</b>	<b>186</b>



# DIVISION OF FAMILY RESOURCES

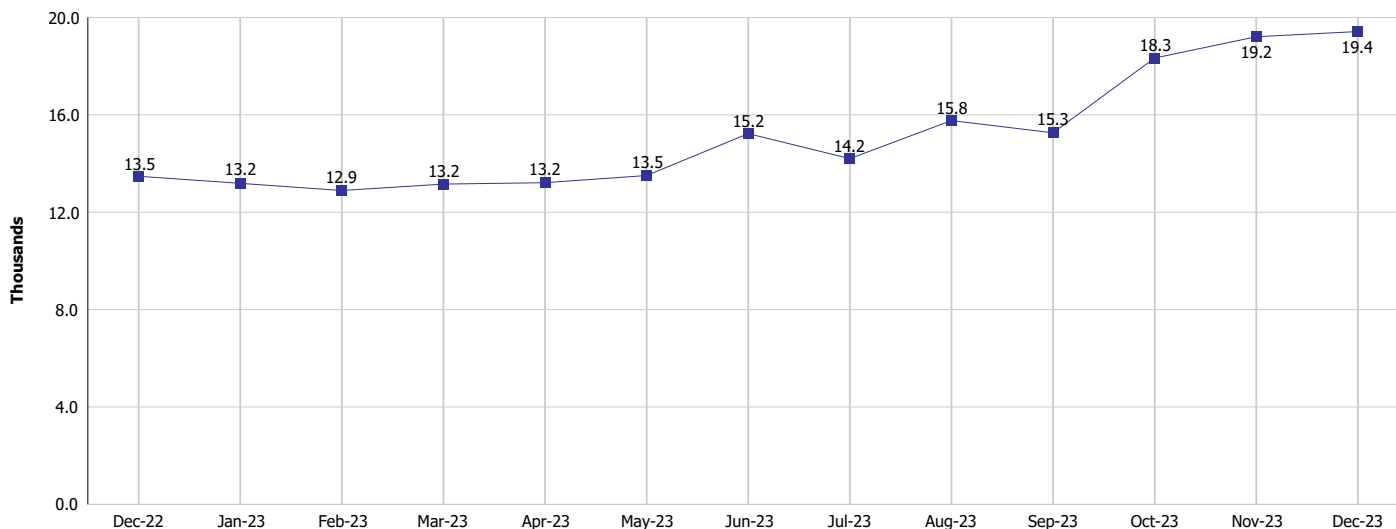
## Monthly Management Report

Reporting Month: December 2023

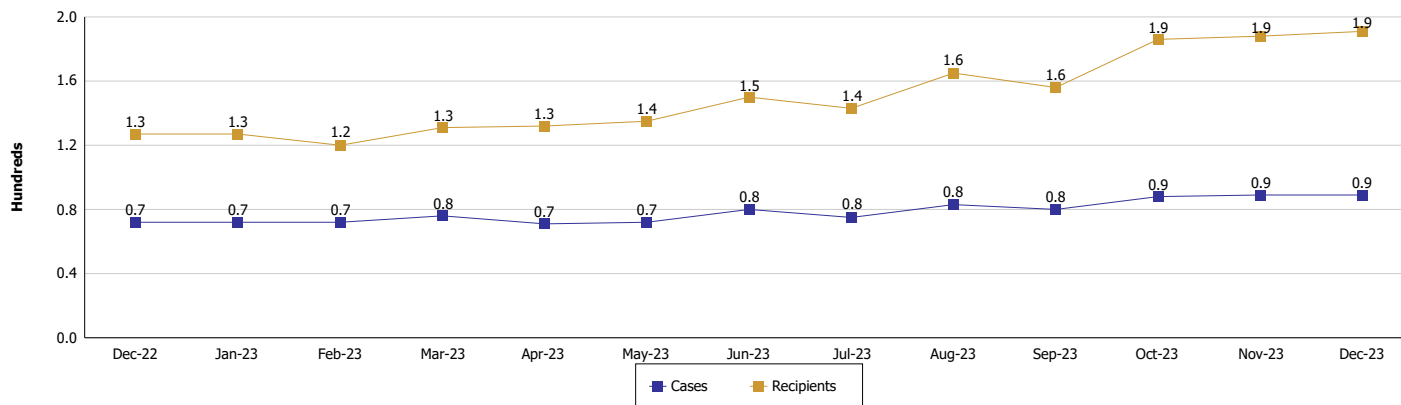
Location: Floyd County

### TEMPORARY ASSISTANCE FOR NEEDY FAMILIES (TANF)

#### TANF Regular And TANF Two-Parent Cash Assistance



#### TANF Cases and Recipients (TANF Regular and TANF Two-Parent)



#### Note:

For August 2021, a one time payment of \$400 per recipient was included in the Total payments and Average payments. TANF section rules changed to reflect Federal reporting logic effective September 2021. For August 2022, a one-time payment of \$269 per recipient was included in the Total payments and Average payments.

**Monthly Management Report**

Reporting Month: December 2023 Location: Floyd County

**SUPPLEMENTAL NUTRITION ASSISTANCE PROGRAM (SNAP)**

	December 2023	November 2023	December 2022	Annual Change
Total issuance	\$1,227,491	\$1,218,546	\$1,130,594	8.57%
Number of households receiving SNAP benefits	2,929	2,918	2,802	4.53%
Number of recipients	6,133	6,094	5,770	6.29%
Average issuance per household	\$419.08	\$417.6	\$403.5	3.86%
Average issuance per recipient	\$200.15	\$199.96	\$195.94	2.15%
Number of Applications	351	354	362	-3.04%



## DIVISION OF FAMILY RESOURCES

### Monthly Management Report

Reporting Month: December 2023

Location: Floyd County

#### SNAP - RECIPIENTS BY ZIP CODE

ZIP Code	Households	Recipients
46201	2	2
46226	1	1
46254	1	4
46544	1	1
46545	1	1
46628	1	2
47106	1	5
47112	2	4
47117	3	8
47119	72	139
47122	104	235
47124	57	118
47129	1	1
47130	6	9
47136	33	66
47143	1	3
47150	2,606	5,455
47151	8	8
47165	4	7
47172	17	45
47374	1	7
47670	1	4
None	5	8
<b>Totals</b>	<b>2,929</b>	<b>6,133</b>



# DIVISION OF FAMILY RESOURCES

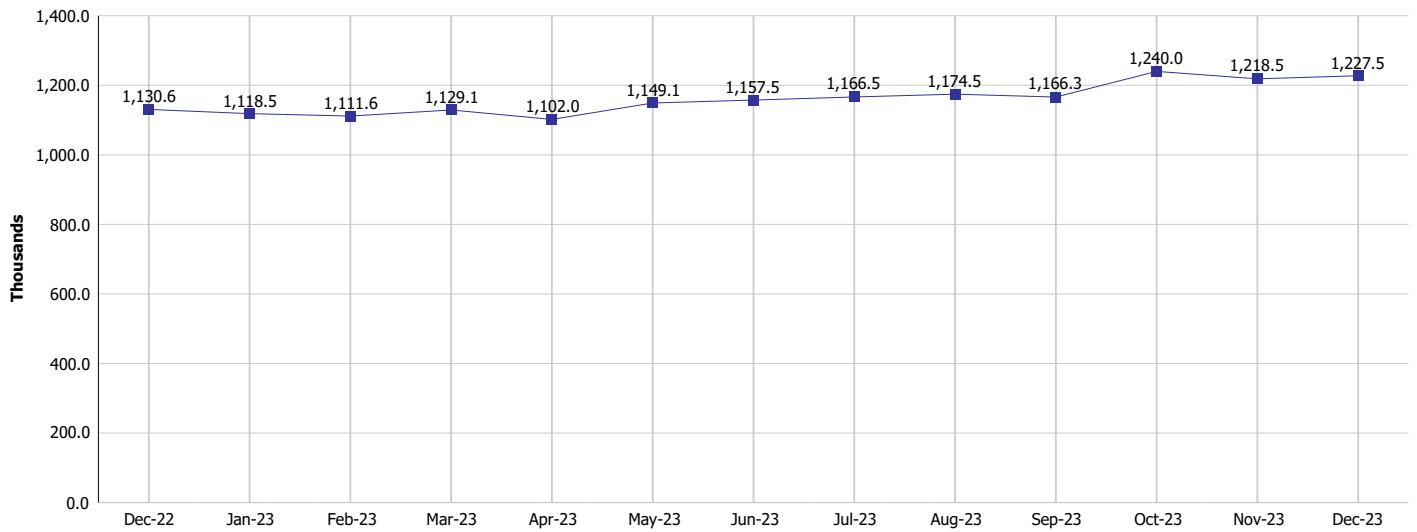
## Monthly Management Report

Reporting Month: December 2023

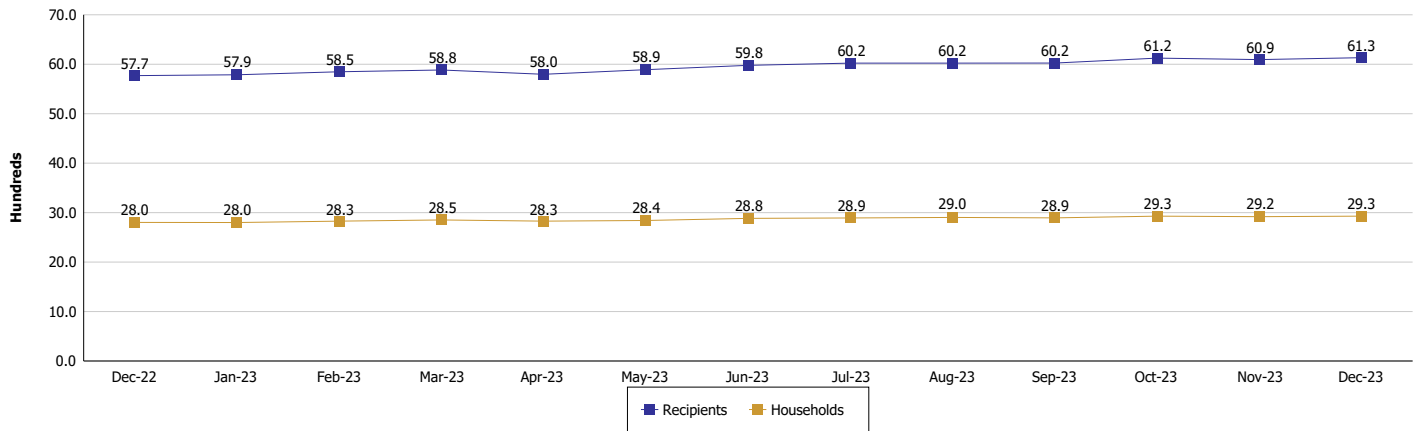
Location: Floyd County

### SUPPLEMENTAL NUTRITION ASSISTANCE PROGRAM (SNAP)

#### SNAP Issuance



#### SNAP Households and Recipients



**Note:**

Run Date: Jan 12, 2024



## DIVISION OF FAMILY RESOURCES

### Monthly Management Report

Reporting Month: December 2023

Location: Floyd County

#### HIP 2.0 and SNAP

	December 2023	November 2023	December 2022	Annual Change
Total HIP 2.0 Members	6,825	7,034	7,852	-13.08%
HIP Members also SNAP Recipients	1,766	1,773	1,697	4.07%
Percentage HIP Members SNAP Recipients	25.9%	25.2%	21.6%	4.26
HIP Members SNAP ABAWDs	93	95	88	5.68%
Percentage HIP Members SNAP ABAWDs	1.4%	1.4%	1.1%	0.2





## DIVISION OF FAMILY RESOURCES

### Monthly Management Report

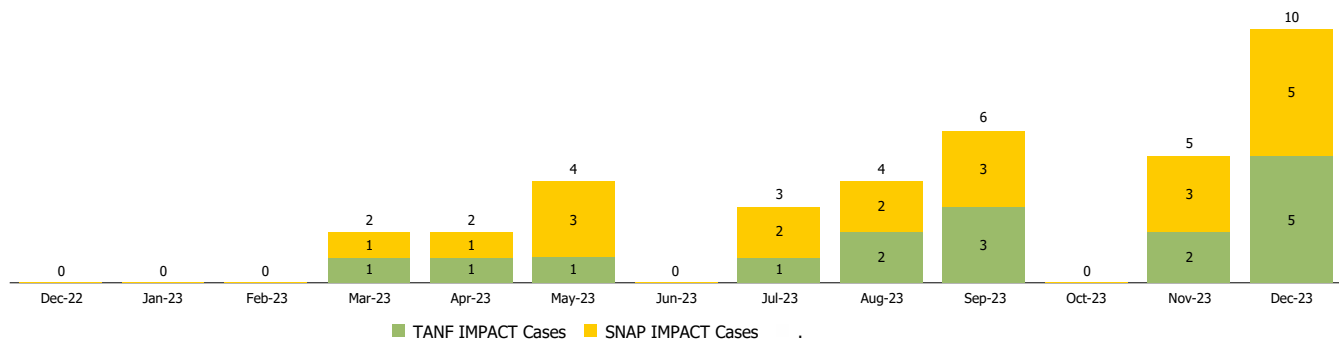
Reporting Month: December 2023

Location: Floyd County

#### INDIANA MANPOWER PLACEMENT AND COMPREHENSIVE TRAINING (IMPACT)

	December 2023	November 2023	December 2022	Annual Change
Number of IMPACT cases	10	5	0	
Number of TANF IMPACT adults	5	2	0	
Number of SNAP IMPACT Cases	5	3	0	
Total number of adults employed	8	18	25	-68.00%
Number of TANF IMPACT adults newly employed (within past 30 days)	0	1	1	-100.00%
Number of SNAP IMPACT adults employed	8	17	24	-66.67%
Total number of adults ineligible due to employment	17	20	16	6.25%
Number of TANF adults ineligible due to employment	0	2	0	
Number of SNAP adults ineligible due to employment	17	18	16	6.25%

**IMPACT Caseloads**  
(SNAP, TANF, Total Caseload)



**Note:**

Effective January 2022, these numbers have been adjusted to reflect only those actually participating in IMPACT.