



DIVISION OF FAMILY RESOURCES

Elkhart County Monthly Management Report July 2021

State of Indiana

Eric Holcomb
Governor

Family and Social Services Administration

Jennifer Sullivan, M.D.
Secretary

Division of Family Resources

Adrienne Shields
Director

For questions regarding data on this report contact:
office.Communications@fssa.IN.gov



State of Indiana

Published August 2021



DIVISION OF FAMILY RESOURCES

Monthly Management Report

Reporting Month: July 2021

Location: Elkhart County

TEMPORARY ASSISTANCE FOR NEEDY FAMILIES (TANF)

Child-Only and One-Parent Families	Jul 31, 2021	June 2021	July 2020	Annual Change
Number of families receiving TANF Grants	133	128	148	-10.14%
Total number of grant recipients	313	291	347	-9.80%
Number of adult grant recipients	63	59	62	1.61%
Number of child grant recipients	250	232	285	-12.28%
Total payments	\$29,303	\$27,507	\$30,841	-4.99%
Average payment per case	\$220.32	\$214.90	\$208.39	5.73%
Average payment per recipient	\$93.62	\$94.53	\$88.88	5.33%
Number of cases with benefits reduced to zero	9	7	3	200.00%
Number of recipients with benefits reduced to zero	19	18	9	111.11%
Number of adult recipients with benefit reduced to zero	6	5	3	100.00%
Number of child recipients with benefit reduced to zero	13	13	6	116.67%

Two-Parent Families	Jul 31, 2021	June 2021	July 2020	Annual Change
Number of families receiving TANF Grants	26	24	8	225.00%
Total number of grant recipients	75	71	34	120.59%
Number of adult grant recipients	19	20	11	72.73%
Number of child grant recipients	56	51	23	143.48%
Total payments	\$5,289	\$5,053	\$2,441	116.67%
Average payment per case	\$203.42	\$210.54	\$305.12	-33.33%
Average payment per recipient	\$70.52	\$71.17	\$71.79	-1.77%
Number of cases with benefits reduced to zero	2	2	1	100.00%
Number of recipients with benefits reduced to zero	11	11	3	266.67%
Number of adult recipients with benefit reduced to zero	0	0	2	-100.00%
Number of child recipients with benefit reduced to zero	11	11	1	1,000.00%

Note:

All data July 2014 and following will be broken out according to the new DFR region structure effective July 1 2014.

Source:



DIVISION OF FAMILY RESOURCES

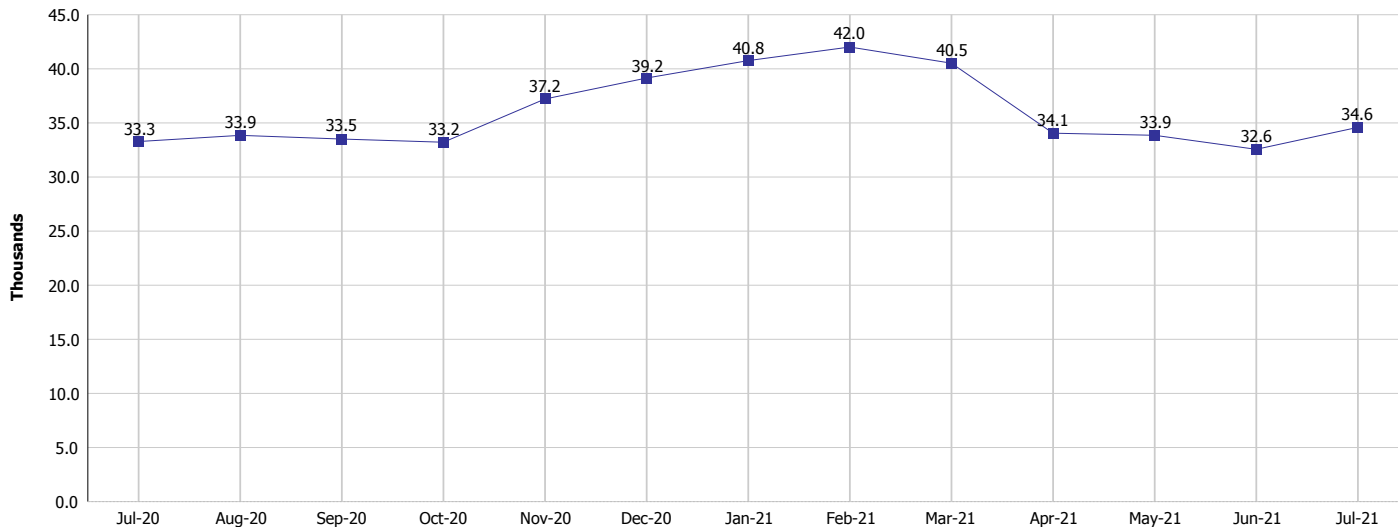
Monthly Management Report

Reporting Month: July 2021

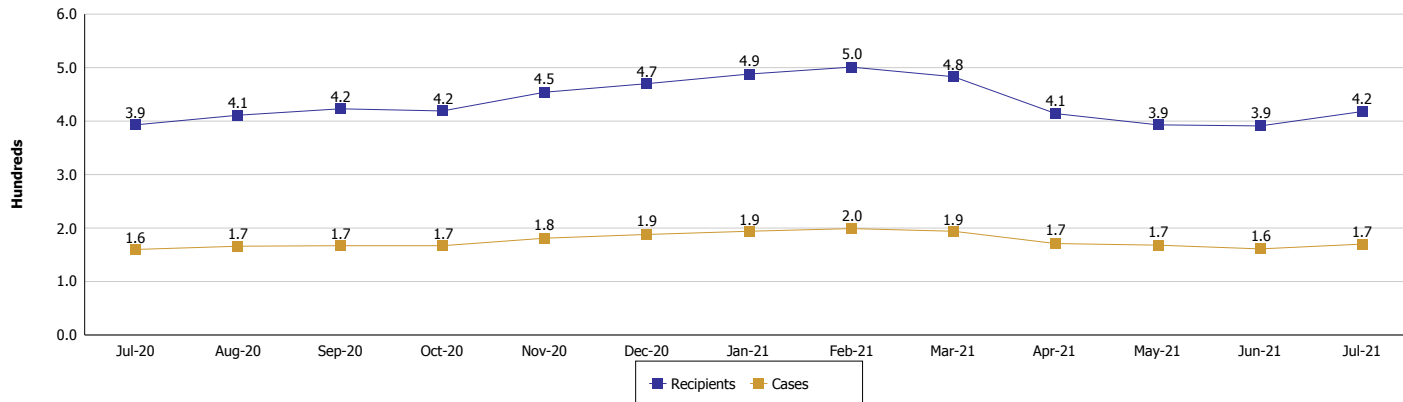
Location: Elkhart County

TEMPORARY ASSISTANCE FOR NEEDY FAMILIES (TANF)

TANF Regular And TANF Two-Parent Cash Assistance



TANF Cases and Recipients (TANF Regular and TANF Two-Parent)



Note:

All data July 2014 and following will be broken out according to the new DFR region structure effective July 1 2014.



DIVISION OF FAMILY RESOURCES

Monthly Management Report

Reporting Month: July 2021

Location: Elkhart County

SUPPLEMENTAL NUTRITION ASSISTANCE PROGRAM (SNAP)

	July 2021	June 2021	July 2020	Annual Change
Total issuance	\$3,209,912	\$3,384,310	\$2,881,790	11.39%
Number of households receiving SNAP benefits	6,233	6,498	6,981	-10.71%
Number of recipients	14,067	14,816	16,489	-14.69%
Average issuance per household	\$514.99	\$520.82	\$412.8	24.76%
Average issuance per recipient	\$228.19	\$228.42	\$174.77	30.57%

Note:

All data July 2014 and following will be broken out according to the new DFR region structure effective July 1 2014.



DIVISION OF FAMILY RESOURCES

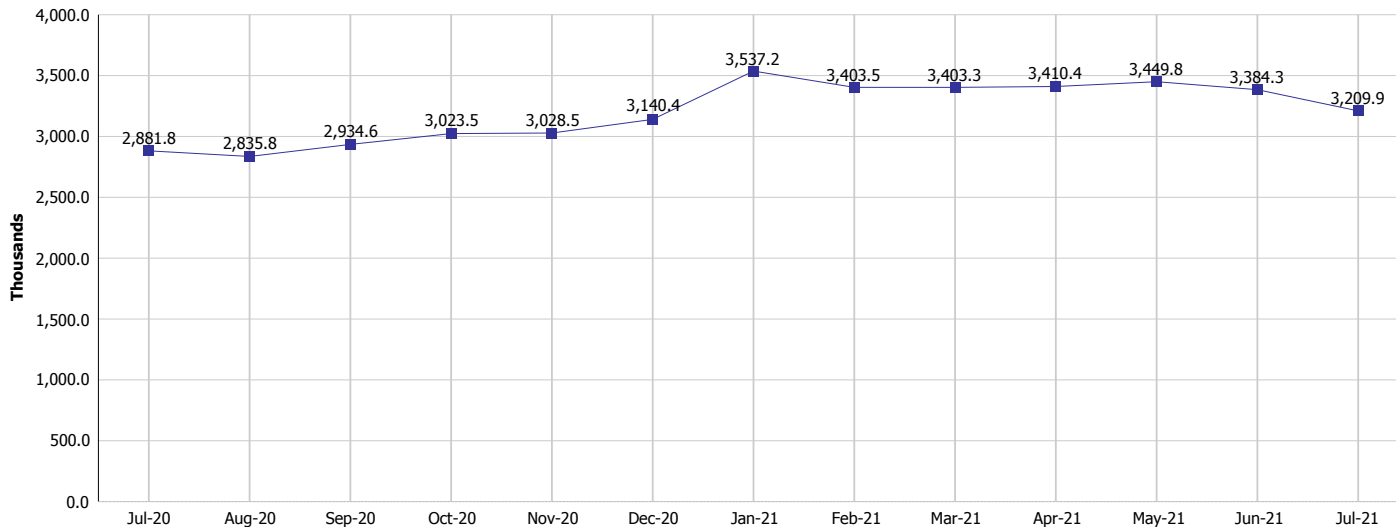
Monthly Management Report

Reporting Month: July 2021

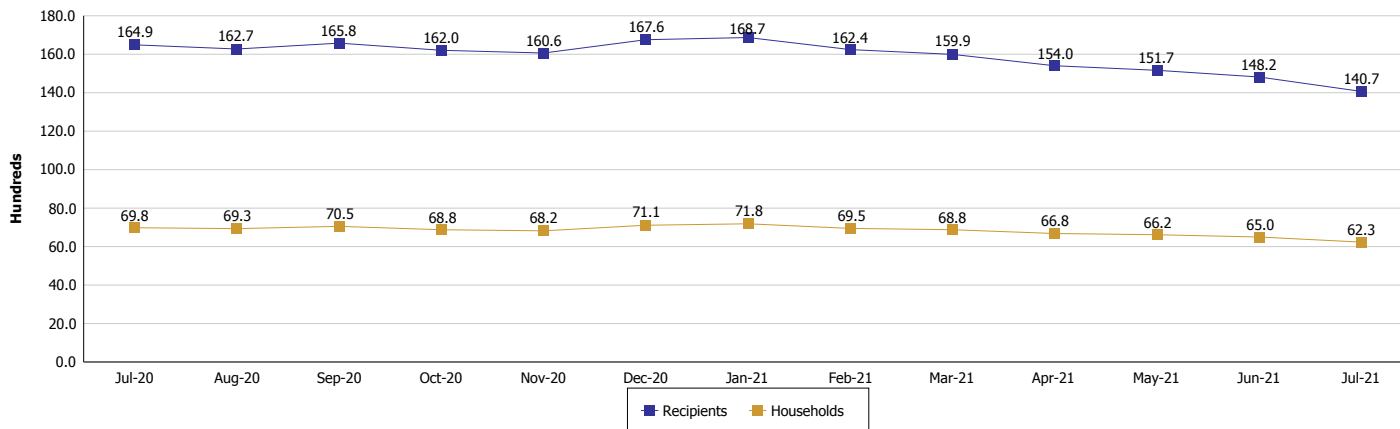
Location: Elkhart County

SUPPLEMENTAL NUTRITION ASSISTANCE PROGRAM (SNAP)

SNAP Issuance



SNAP Households and Recipients



Note:

All data July 2014 and following will be broken out according to the new DFR region structure effective July 1 2021.



DIVISION OF FAMILY RESOURCES

Monthly Management Report

Reporting Month: July 2021

Location: Elkhart County

HIP 2.0 and SNAP

	July 2021	June 2021	July 2020	Annual Change
Total HIP 2.0 Members	17,205	17,042	13,073	31.61%
HIP Members also SNAP Recipients	3,751	4,007	3,955	-5.16%
Percentage HIP Members SNAP Recipients	21.8%	23.5%	30.3%	-8.45
HIP Members SNAP ABAWDs	0	0	27	-100.00%
Percentage HIP Members SNAP ABAWDs	0	0	0.2%	-0.2

Note:

All data July 2014 and following will be broken out according to the new DFR region structure effective July 1 2014.



DIVISION OF FAMILY RESOURCES

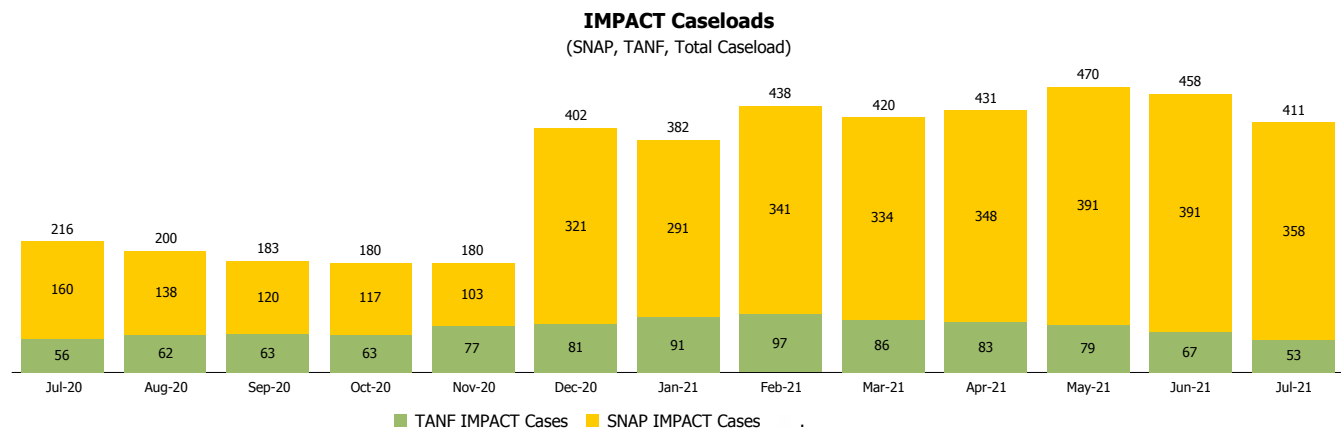
Monthly Management Report

Reporting Month: July 2021

Location: Elkhart County

INDIANA MANPOWER PLACEMENT AND COMPREHENSIVE TRAINING (IMPACT)

	July 2021	June 2021	July 2020	Annual Change
Number of IMPACT cases	411	458	216	90.28%
Number of TANF IMPACT adults	53	67	56	-5.36%
Number of SNAP IMPACT Cases	358	391	160	123.75%
Total number of adults employed	63	69	22	186.36%
Number of TANF IMPACT adults newly employed (within past 30 days)	5	1	4	25.00%
Number of SNAP IMPACT adults employed	58	68	18	222.22%
Total number of adults ineligible due to employment	80	73	146	-45.21%
Number of TANF adults ineligible due to employment	0	2	1	-100.00%
Number of SNAP adults ineligible due to employment	80	71	145	-44.83%



Note:

All data July 2014 and following will be broken out according to the new DFR region structure effective July 1 2014.