



DIVISION OF FAMILY RESOURCES

Delaware County Monthly Management Report December 2023

State of Indiana

Eric Holcomb
Governor

Family and Social Services Administration

Dan Rusyniak, MD
Secretary

Division of Family Resources

Adrienne Shields
Director

For questions regarding data on this report contact:
office.Communications@fssa.IN.gov



State of Indiana

Published January 2024



DIVISION OF FAMILY RESOURCES

Monthly Management Report

Reporting Month: December 2023

Location: Delaware County

TEMPORARY ASSISTANCE FOR NEEDY FAMILIES (TANF)

Child-Only and One-Parent Families	December 2023	November 2023	December 2022	Annual Change
Number of families receiving TANF Grants	81	83	74	9.46%
Total number of grant recipients	157	160	125	25.60%
Number of adult grant recipients	16	15	8	100.00%
Number of child grant recipients	141	145	117	20.51%
Total payments	\$17,573	\$17,927	\$12,614	39.31%
Average payment per case	\$216.95	\$215.99	\$170.46	27.27%
Average payment per recipient	\$111.93	\$112.04	\$100.91	10.92%
Number of cases with benefits reduced to zero	0	0	0	0%
Number of recipients with benefits reduced to zero	0	0	0	0%
Number of adult recipients with benefit reduced to zero	0	0	0	0%
Number of child recipients with benefit reduced to zero	0	0	0	0%

Two-Parent Families	December 2023	November 2023	December 2022	Annual Change
Number of families receiving TANF Grants	1	1	3	-66.67%
Total number of grant recipients	4	4	12	-66.67%
Number of adult grant recipients	2	2	1	100.00%
Number of child grant recipients	2	2	11	-81.82%
Total payments	\$346	\$346	\$288	20.14%
Average payment per case	\$346.00	\$346.00	\$96.00	260.42%
Average payment per recipient	\$86.50	\$86.50	\$24.00	260.42%
Number of cases with benefits reduced to zero	0	0	0	0%
Number of recipients with benefits reduced to zero	0	0	0	0%
Number of adult recipients with benefit reduced to zero	0	0	0	0%
Number of child recipients with benefit reduced to zero	0	0	0	0%

Note:

For August 2021, a one time payment of \$400 per recipient was included in the Total payments and Average payments. TANF section rules changed to reflect Federal reporting logic effective September 2021. For August 2022, a one-time payment of \$269 per recipient was included in the Total payments and Average payments.

Source:



DIVISION OF FAMILY RESOURCES

Monthly Management Report

Reporting Month: December 2023

Location: Delaware County

TANF - APPLICATIONS

	December 2023	November 2023	December 2022	Annual Change
Number of Applications	82	99	107	-23.36%

TANF - RECIPIENTS BY ZIP CODE

ZIP Code	Households	Recipients
47302	43	82
47303	13	33
47304	10	19
47305	9	19
47334	1	2
47336	1	1
47342	2	2
47396	3	3
Total	82	161



DIVISION OF FAMILY RESOURCES

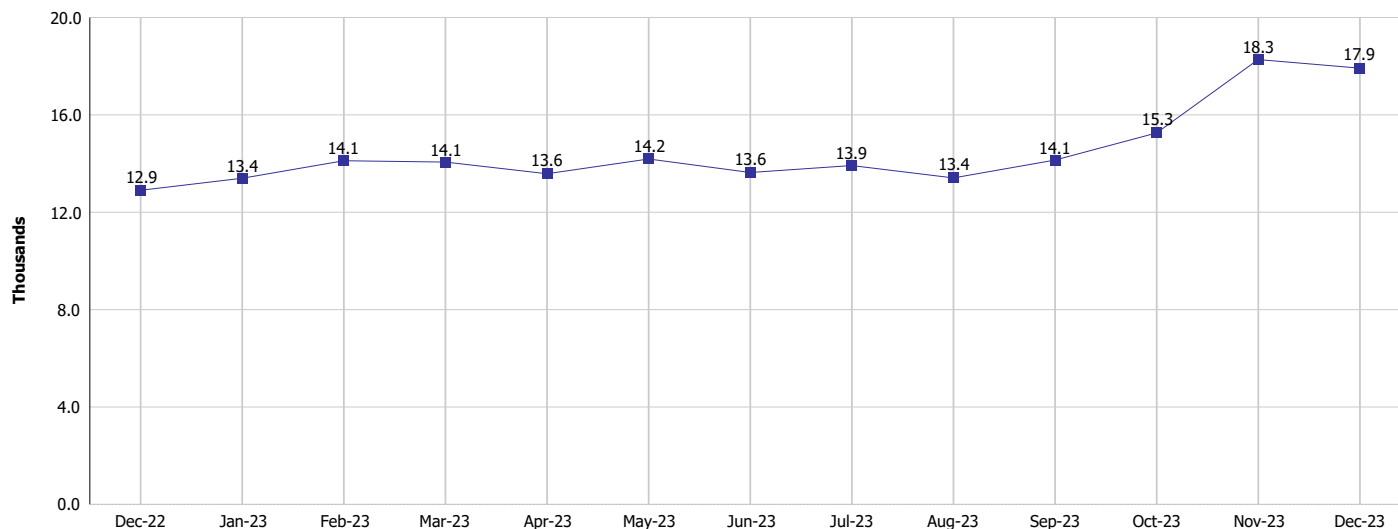
Monthly Management Report

Reporting Month: December 2023

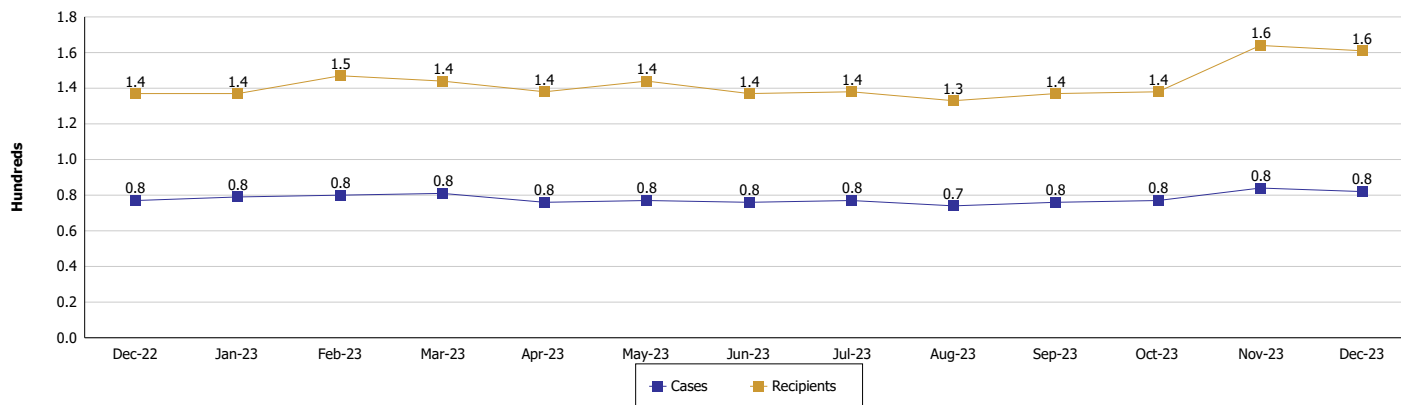
Location: Delaware County

TEMPORARY ASSISTANCE FOR NEEDY FAMILIES (TANF)

TANF Regular And TANF Two-Parent Cash Assistance



TANF Cases and Recipients (TANF Regular and TANF Two-Parent)



Note:

For August 2021, a one time payment of \$400 per recipient was included in the Total payments and Average payments. TANF section rules changed to reflect Federal reporting logic effective September 2021.

For August 2022, a one-time payment of \$269 per recipient was included in the Total payments and Average payments.



DIVISION OF FAMILY RESOURCES

Monthly Management Report

Reporting Month: December 2023

Location: Delaware County

SUPPLEMENTAL NUTRITION ASSISTANCE PROGRAM (SNAP)

	December 2023	November 2023	December 2022	Annual Change
Total issuance	\$2,803,320	\$2,827,159	\$2,703,026	3.71%
Number of households receiving SNAP benefits	7,004	7,021	6,976	0.4%
Number of recipients	13,790	13,927	13,790	0.00%
Average issuance per household	\$400.25	\$402.67	\$387.48	3.3%
Average issuance per recipient	\$203.29	\$203	\$196.01	3.71%
Number of Applications	773	844	787	-1.78%



DIVISION OF FAMILY RESOURCES

Monthly Management Report

Reporting Month: December 2023

Location: Delaware County

SNAP - RECIPIENTS BY ZIP CODE

ZIP Code	Households	Recipients
46001	3	7
46012	6	12
46013	2	2
46016	2	5
46017	11	28
46040	1	2
46044	1	1
46060	1	1
46140	1	2
46143	1	7
46205	1	1
46236	1	1
46250	1	1
46802	1	1
46902	1	3
46952	2	2
46970	1	3
46986	1	1
47032	1	1
47240	1	1
47302	2,997	5,908
47303	1,648	3,323
47304	902	1,847
47305	606	1,000
47306	3	6
47307	3	5
47308	9	13
47320	128	265
47334	122	230
47336	10	23
47338	133	278
47340	1	1
47342	88	194
47348	2	2
47354	2	12
47356	2	5
47367	5	9
47368	17	40
47373	1	4
47374	2	2
47383	84	169
47396	196	369
47933	1	1
None	2	2
Totals	7,004	13,790



DIVISION OF FAMILY RESOURCES

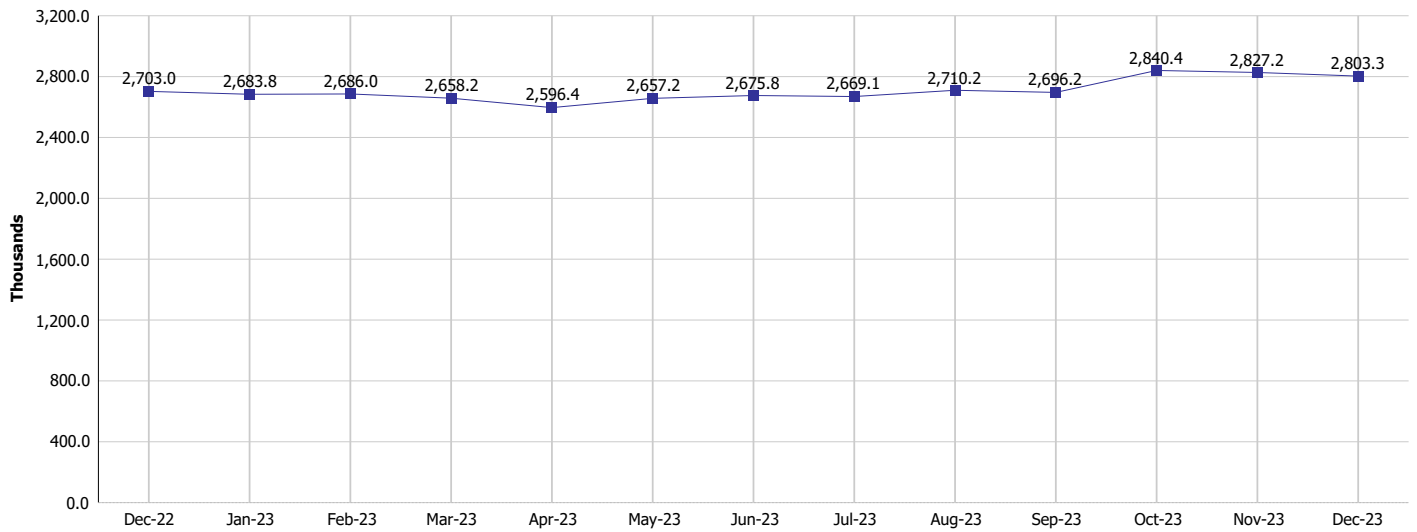
Monthly Management Report

Reporting Month: December 2023

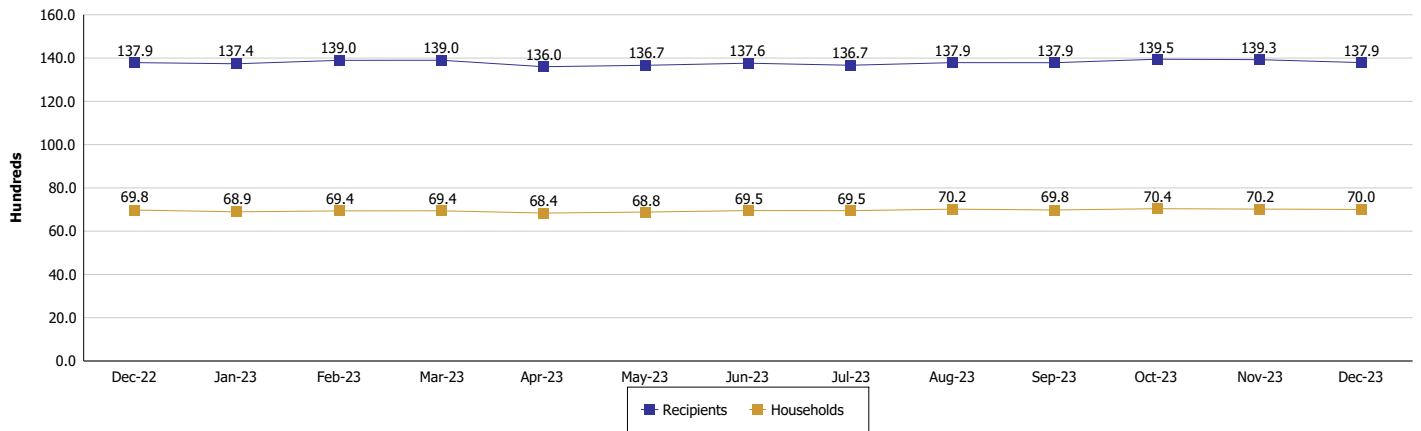
Location: Delaware County

SUPPLEMENTAL NUTRITION ASSISTANCE PROGRAM (SNAP)

SNAP Issuance



SNAP Households and Recipients



Note:

Run Date: Jan 12, 2024



DIVISION OF FAMILY RESOURCES

Monthly Management Report

Reporting Month: December 2023

Location: Delaware County

HIP 2.0 and SNAP

	December 2023	November 2023	December 2022	Annual Change
Total HIP 2.0 Members	14,577	14,712	15,525	-6.11%
HIP Members also SNAP Recipients	4,627	4,637	4,527	2.21%
Percentage HIP Members SNAP Recipients	31.7%	31.5%	29.2%	2.58
HIP Members SNAP ABAWDs	320	333	325	-1.54%
Percentage HIP Members SNAP ABAWDs	2.2%	2.3%	2.1%	0.1



DIVISION OF FAMILY RESOURCES

Monthly Management Report

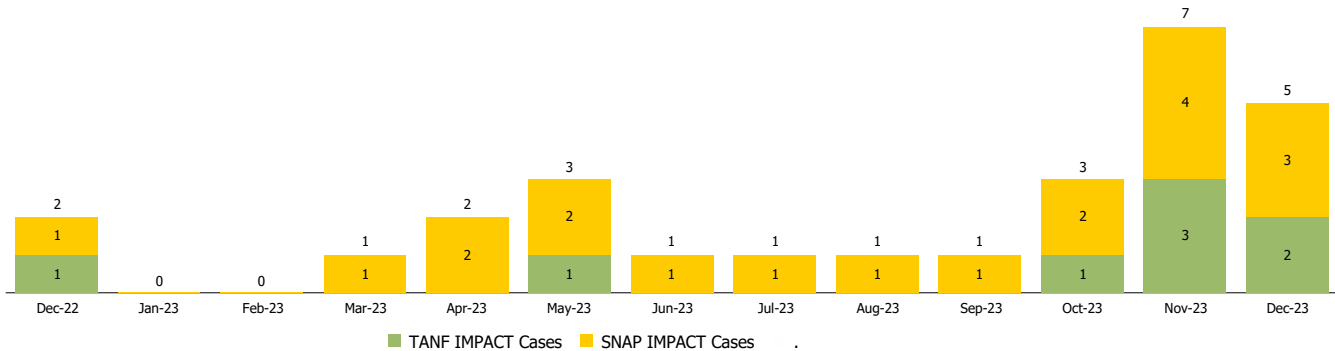
Reporting Month: December 2023

Location: Delaware County

INDIANA MANPOWER PLACEMENT AND COMPREHENSIVE TRAINING (IMPACT)

	December 2023	November 2023	December 2022	Annual Change
Number of IMPACT cases	5	7	2	150.00%
Number of TANF IMPACT adults	2	3	1	100.00%
Number of SNAP IMPACT Cases	3	4	1	200.00%
Total number of adults employed	30	28	71	-57.75%
Number of TANF IMPACT adults newly employed (within past 30 days)	0	1	2	-100.00%
Number of SNAP IMPACT adults employed	30	27	69	-56.52%
Total number of adults ineligible due to employment	27	36	24	12.50%
Number of TANF adults ineligible due to employment	1	1	0	
Number of SNAP adults ineligible due to employment	26	35	24	8.33%

IMPACT Caseloads
(SNAP, TANF, Total Caseload)



Note:

Effective January 2022, these numbers have been adjusted to reflect only those actually participating in IMPACT.