



DIVISION OF FAMILY RESOURCES

Crawford County Monthly Management Report October 2025

State of Indiana

Mike Braun
Governor

Family and Social Services Administration

Mitch Roob
Secretary

Division of Family Resources

Sunshine Beam
Director

For questions regarding data on this report contact:
office.Communications@fssa.IN.gov



State of Indiana

Published November 2025



DIVISION OF FAMILY RESOURCES

Monthly Management Report

Reporting Month: October 2025

Location: Crawford County

TEMPORARY ASSISTANCE FOR NEEDY FAMILIES (TANF)

Child-Only and One-Parent Families	October 2025	September 2025	October 2024	Annual Change
Number of families receiving TANF Grants	10	10	7	42.86%
Total number of grant recipients	26	25	15	73.33%
Number of adult grant recipients	2	2	2	0.00%
Number of child grant recipients	24	23	13	84.62%
Total payments	\$4,620	\$4,496	\$2,853	61.93%
Average payment per case	\$462.00	\$449.60	\$407.57	13.35%
Average payment per recipient	\$177.69	\$179.84	\$190.20	-6.58%
Number of cases with benefits reduced to zero	0	0	0	0%
Number of recipients with benefits reduced to zero	0	0	0	0%
Number of adult recipients with benefit reduced to zero	0	0	0	0%
Number of child recipients with benefit reduced to zero	0	0	0	0%

Pregnancy TANF Families	October 2025	September 2025	October 2024	Annual Change
Number of families receiving TANF Grants	0	0	1	-100.00%
Total number of grant recipients	0	0	1	-100.00%
Total payments	\$0.00	\$0.00	\$248.00	-100.00%
Average payment per case	\$0.00	\$0.00	\$248.00	-100.00%
Average payment per recipient	\$0.00	\$0.00	\$248.00	-100.00%
Number of cases with benefits reduced to zero	0	0	0	0%
Number of recipients with benefits reduced to zero	0	0	0	0%



DIVISION OF FAMILY RESOURCES

Monthly Management Report

Two-Parent Families	October 2025	September 2025	October 2024	Annual Change
Number of families receiving TANF Grants	0	0	1	-100.00%
Total number of grant recipients	0	0	6	-100.00%
Number of adult grant recipients	0	0	2	-100.00%
Number of child grant recipients	0	0	4	-100.00%
Total payments	\$0	\$0	\$825	-100.00%
Average payment per case	\$0.00	\$0.00	\$825.00	-100.00%
Average payment per recipient	\$0.00	\$0.00	\$137.50	-100.00%
Number of cases with benefits reduced to zero	0	0	0	0%
Number of recipients with benefits reduced to zero	0	0	0	0%
Number of adult recipients with benefit reduced to zero	0	0	0	0%
Number of child recipients with benefit reduced to zero	0	0	0	0%

Note: The two-parent case count includes cases in which a parent living in the home is excluded from receiving TANF benefits but whose income is used in the TANF eligibility determination.



DIVISION OF FAMILY RESOURCES

Monthly Management Report

Reporting Month: October 2025	Location: Crawford County
-------------------------------	---------------------------

TANF - APPLICATIONS

	October 2025	September 2025	October 2024	Annual Change
Number of Applications	3	5	10	-70.00%

TANF - RECIPIENTS BY ZIP CODE

ZIP Code	Households	Recipients
47118	3	6
47140	1	3
47145	4	12
47175	2	5
Total	10	26



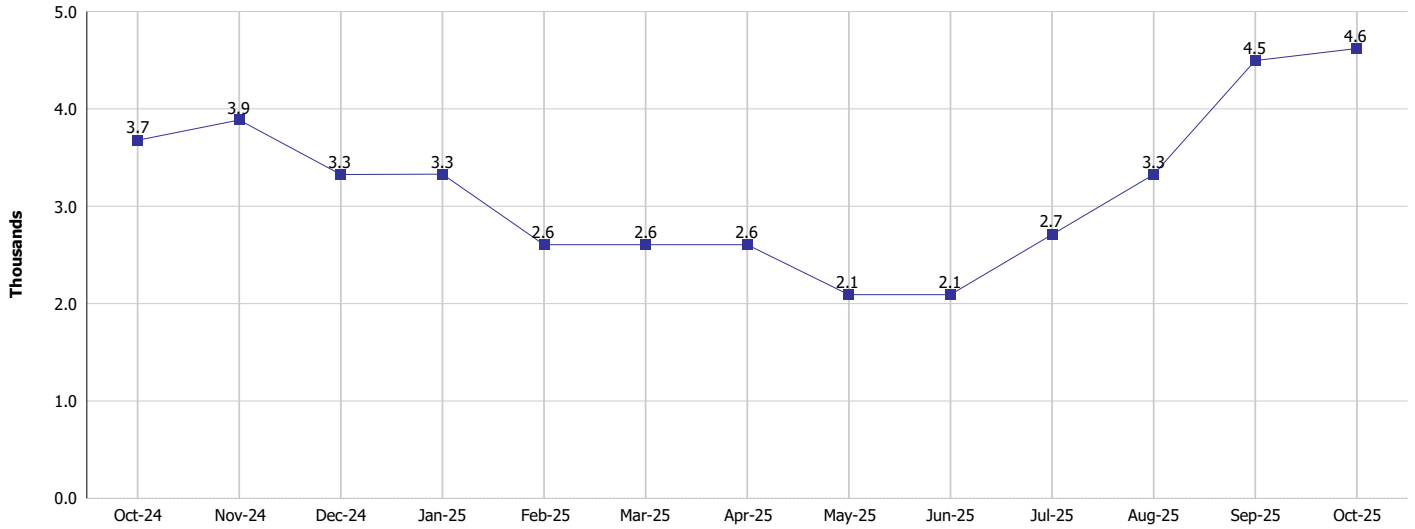
DIVISION OF FAMILY RESOURCES

Monthly Management Report

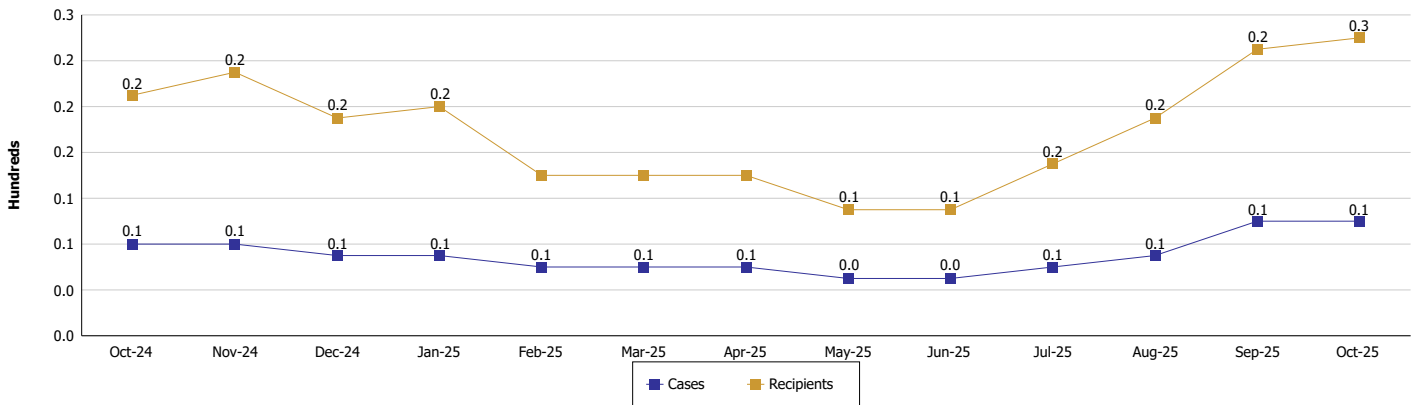
Reporting Month: October 2025 Location: Crawford County

TEMPORARY ASSISTANCE FOR NEEDY FAMILIES (TANF)

TANF Regular And TANF Two-Parent Cash Assistance



TANF Cases and Recipients
(TANF Regular and TANF Two-Parent)





DIVISION OF FAMILY RESOURCES

Monthly Management Report

Reporting Month: October 2025

Location: Crawford County

SUPPLEMENTAL NUTRITION ASSISTANCE PROGRAM (SNAP)

	October 2025	September 2025	October 2024	Annual Change
Total issuance	\$171,279	\$162,401	\$172,526	-0.72%
Number of households receiving SNAP benefits	434	433	440	-1.36%
Number of recipients	931	924	944	-1.38%
Average issuance per household	\$394.65	\$375.06	\$392.1	0.65%
Average issuance per recipient	\$183.97	\$175.76	\$182.76	0.66%
Number of Applications	32	48	60	-46.67%



DIVISION OF FAMILY RESOURCES

Monthly Management Report

Reporting Month: October 2025 Location: Crawford County

SNAP - RECIPIENTS BY ZIP CODE

ZIP Code	Households	Recipients
47112	1	1
47116	18	49
47118	140	292
47123	5	13
47137	38	65
47140	115	223
47145	63	159
47174	4	15
47175	32	62
47250	1	4
47454	1	1
47513	9	17
47529	1	2
47542	1	1
47546	1	6
47802	1	1
None	3	20
Totals	434	931



DIVISION OF FAMILY RESOURCES

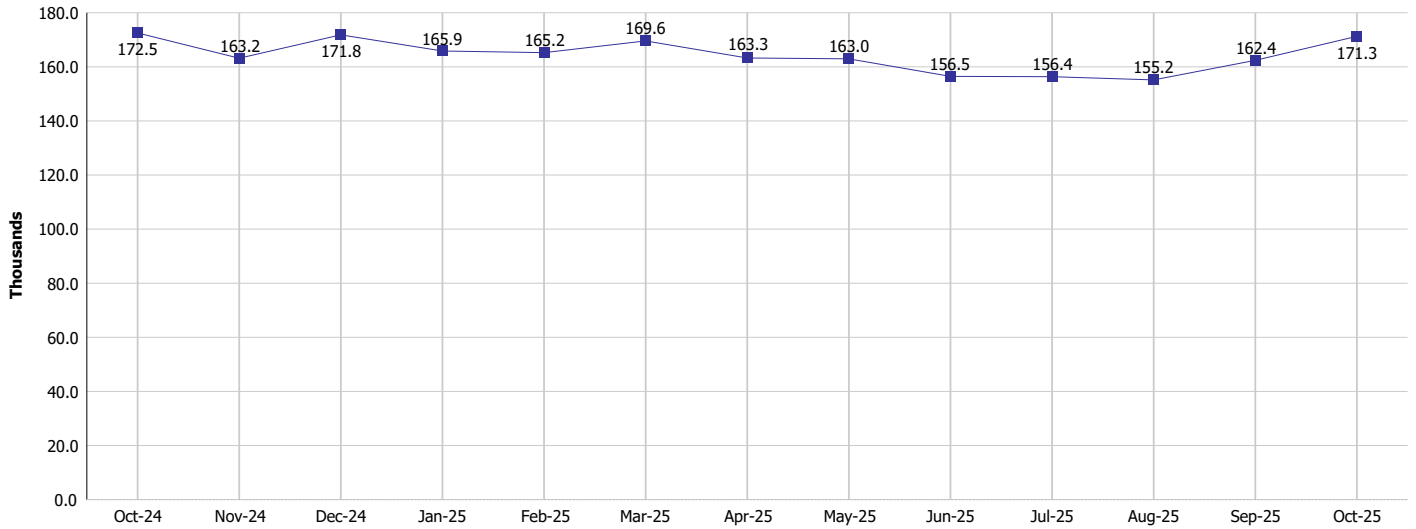
Monthly Management Report

Reporting Month: October 2025

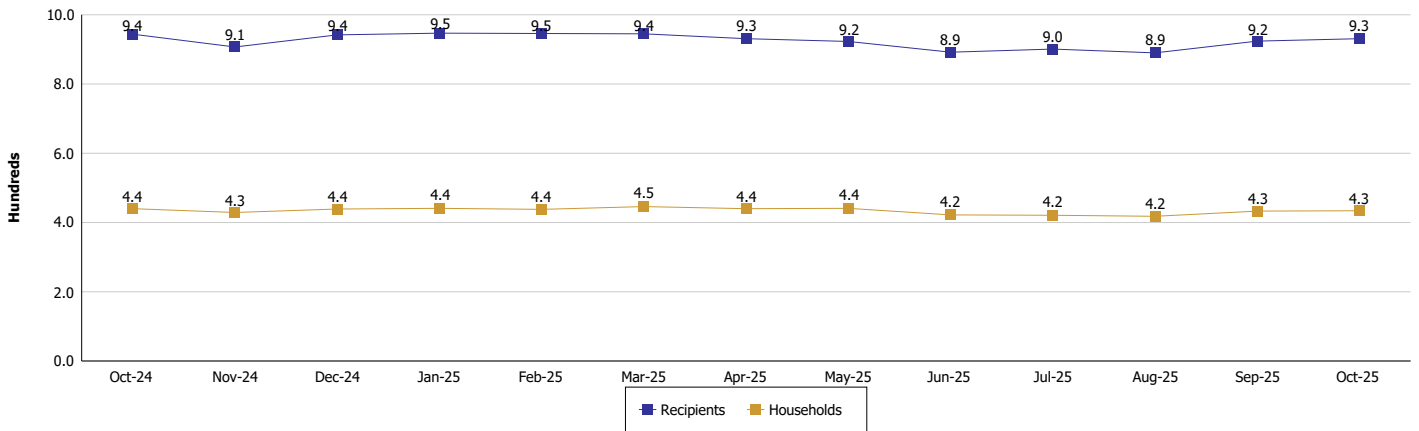
Location: Crawford County

SUPPLEMENTAL NUTRITION ASSISTANCE PROGRAM (SNAP)

SNAP Issuance



SNAP Households and Recipients





DIVISION OF FAMILY RESOURCES

Monthly Management Report

Reporting Month: October 2025

Location: Crawford County

HIP 2.0 and SNAP

	October 2025	September 2025	October 2024	Annual Change
Total HIP 2.0 Members	1,021	1,023	1,100	-7.18%
HIP Members also SNAP Recipients	280	279	287	-2.44%
Percentage HIP Members SNAP Recipients	27.4%	27.3%	26.1%	1.33
HIP Members SNAP ABAWDs	9	7	18	-50.00%
Percentage HIP Members SNAP ABAWDs	0.9%	0.7%	1.6%	-0.8



DIVISION OF FAMILY RESOURCES

Monthly Management Report

Reporting Month: October 2025

Location: Crawford County

INDIANA MANPOWER PLACEMENT AND COMPREHENSIVE TRAINING (IMPACT)

	October 2025	September 2025	October 2024	Annual Change
Number of IMPACT cases	0	1	0	
Number of TANF IMPACT adults	0	0	0	
Number of SNAP IMPACT Cases	0	1	0	
Total number of adults employed	0	2	7	-100.00%
Number of TANF IMPACT adults newly employed (within past 30 days)	0	0	1	-100.00%
Number of SNAP IMPACT adults employed	0	2	6	-100.00%
Total number of adults ineligible due to employment	1	1	1	0.00%
Number of TANF adults ineligible due to employment	0	0	0	
Number of SNAP adults ineligible due to employment	1	1	1	0.00%

IMPACT Caseloads
(SNAP, TANF, Total Caseload)

