



DIVISION OF FAMILY RESOURCES

Clay County Monthly Management Report December 2023

State of Indiana

Eric Holcomb
Governor

Family and Social Services Administration

Dan Rusyniak, MD
Secretary

Division of Family Resources

Adrienne Shields
Director

For questions regarding data on this report contact:
office.Communications@fssa.IN.gov



State of Indiana

Published January 2024



DIVISION OF FAMILY RESOURCES

Monthly Management Report

Reporting Month: December 2023

Location: Clay County

TEMPORARY ASSISTANCE FOR NEEDY FAMILIES (TANF)

Child-Only and One-Parent Families	December 2023	November 2023	December 2022	Annual Change
Number of families receiving TANF Grants	21	20	16	31.25%
Total number of grant recipients	36	33	25	44.00%
Number of adult grant recipients	4	3	1	300.00%
Number of child grant recipients	32	30	24	33.33%
Total payments	\$4,306	\$3,941	\$2,775	55.17%
Average payment per case	\$205.05	\$197.05	\$173.44	18.23%
Average payment per recipient	\$119.61	\$119.42	\$111.00	7.76%
Number of cases with benefits reduced to zero	0	0	0	0%
Number of recipients with benefits reduced to zero	0	0	0	0%
Number of adult recipients with benefit reduced to zero	0	0	0	0%
Number of child recipients with benefit reduced to zero	0	0	0	0%

Two-Parent Families	December 2023	November 2023	December 2022	Annual Change
Number of families receiving TANF Grants	0	1	1	-100.00%
Total number of grant recipients	0	3	3	-100.00%
Number of adult grant recipients	0	2	2	-100.00%
Number of child grant recipients	0	1	1	-100.00%
Total payments	\$0	\$320	\$288	-100.00%
Average payment per case	\$0.00	\$320.00	\$288.00	-100.00%
Average payment per recipient	\$0.00	\$106.67	\$96.00	-100.00%
Number of cases with benefits reduced to zero	0	0	0	0%
Number of recipients with benefits reduced to zero	0	0	0	0%
Number of adult recipients with benefit reduced to zero	0	0	0	0%
Number of child recipients with benefit reduced to zero	0	0	0	0%

Note:

For August 2021, a one time payment of \$400 per recipient was included in the Total payments and Average payments. TANF section rules changed to reflect Federal reporting logic effective September 2021. For August 2022, a one-time payment of \$269 per recipient was included in the Total payments and Average payments.

Source:



DIVISION OF FAMILY RESOURCES

Monthly Management Report

Reporting Month: December 2023

Location: Clay County

TANF - APPLICATIONS

	December 2023	November 2023	December 2022	Annual Change
Number of Applications	18	21	9	100.00%

TANF - RECIPIENTS BY ZIP CODE

ZIP Code	Households	Recipients
47834	16	28
47837	2	2
47841	1	1
47846	1	3
47857	1	2
Total	21	36



DIVISION OF FAMILY RESOURCES

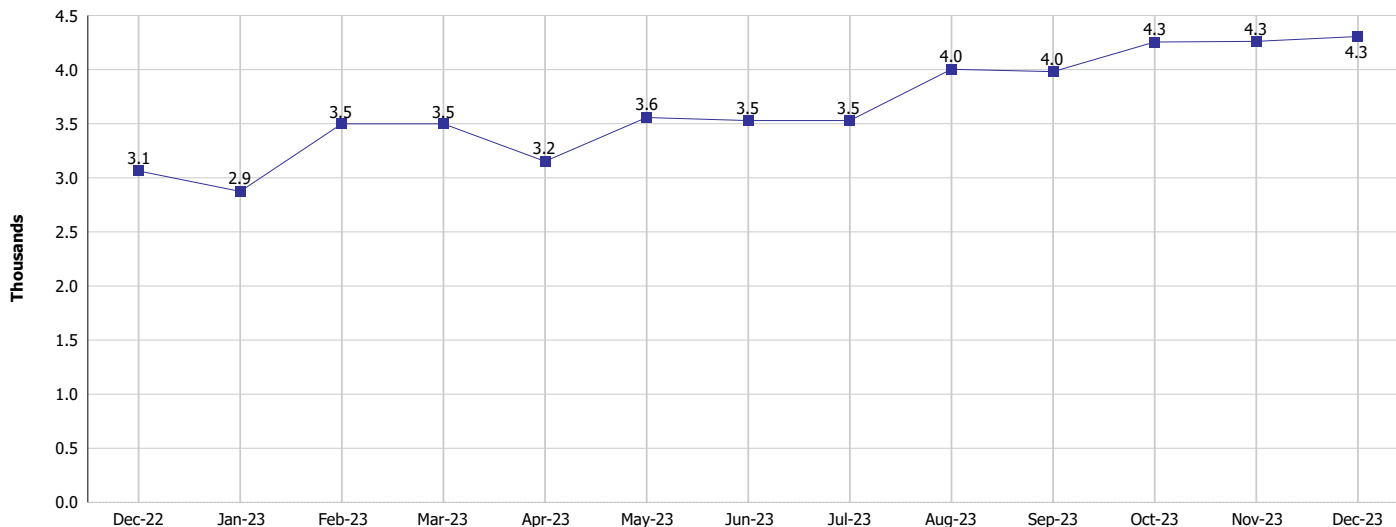
Monthly Management Report

Reporting Month: December 2023

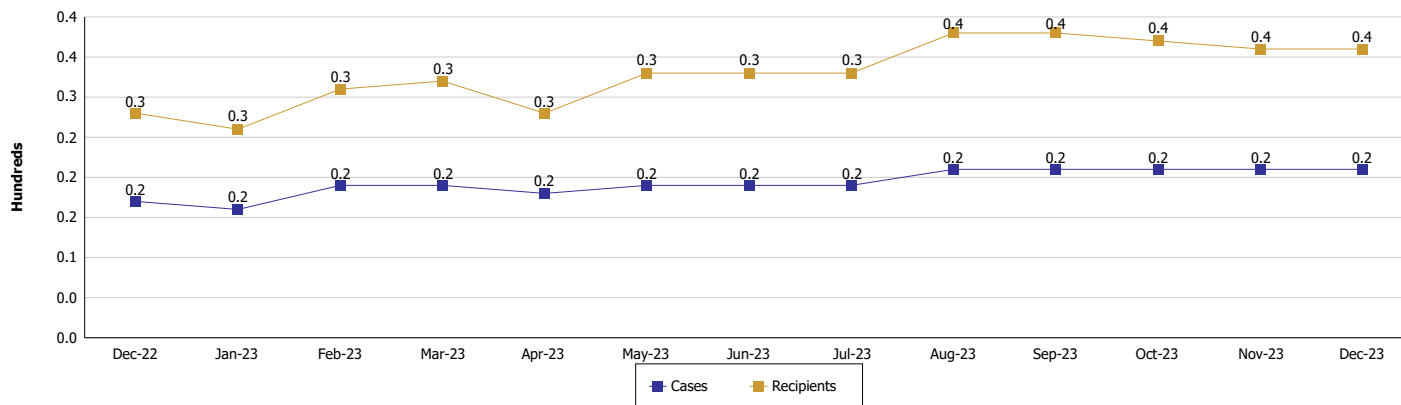
Location: Clay County

TEMPORARY ASSISTANCE FOR NEEDY FAMILIES (TANF)

TANF Regular And TANF Two-Parent Cash Assistance



TANF Cases and Recipients (TANF Regular and TANF Two-Parent)



Note:

For August 2021, a one time payment of \$400 per recipient was included in the Total payments and Average payments. TANF section rules changed to reflect Federal reporting logic effective September 2021. For August 2022, a one-time payment of \$269 per recipient was included in the Total payments and Average payments.



DIVISION OF FAMILY RESOURCES

Monthly Management Report

Reporting Month: December 2023

Location: Clay County

SUPPLEMENTAL NUTRITION ASSISTANCE PROGRAM (SNAP)

	December 2023	November 2023	December 2022	Annual Change
Total issuance	\$468,280	\$481,234	\$445,030	5.22%
Number of households receiving SNAP benefits	1,155	1,179	1,156	-0.09%
Number of recipients	2,463	2,527	2,454	0.37%
Average issuance per household	\$405.44	\$408.17	\$384.97	5.32%
Average issuance per recipient	\$190.13	\$190.44	\$181.35	4.84%
Number of Applications	132	143	138	-4.35%



DIVISION OF FAMILY RESOURCES

Monthly Management Report

Reporting Month: December 2023

Location: Clay County

SNAP - RECIPIENTS BY ZIP CODE

ZIP Code	Households	Recipients
46151	1	1
46201	1	1
47129	1	1
47427	1	2
47438	25	65
47802	3	8
47805	2	12
47807	1	1
47833	18	35
47834	871	1,846
47837	28	56
47840	42	77
47841	80	170
47845	8	22
47846	2	2
47853	15	26
47857	12	32
47858	5	12
47868	15	39
47874	8	20
47879	1	1
47881	14	33
None	1	1
Totals	1,155	2,463



DIVISION OF FAMILY RESOURCES

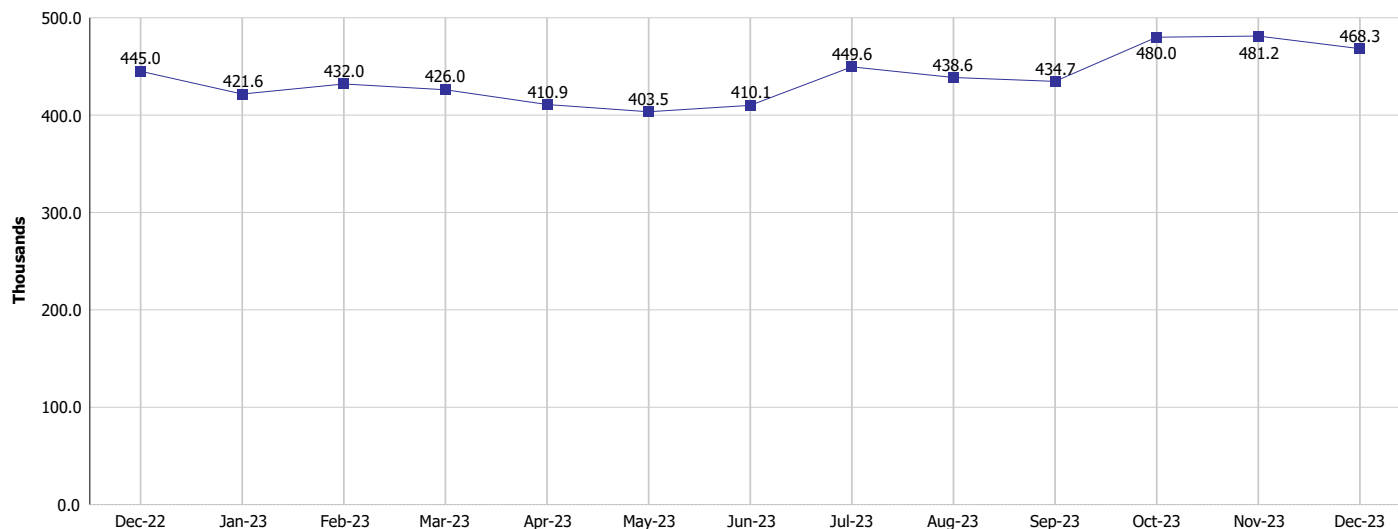
Monthly Management Report

Reporting Month: December 2023

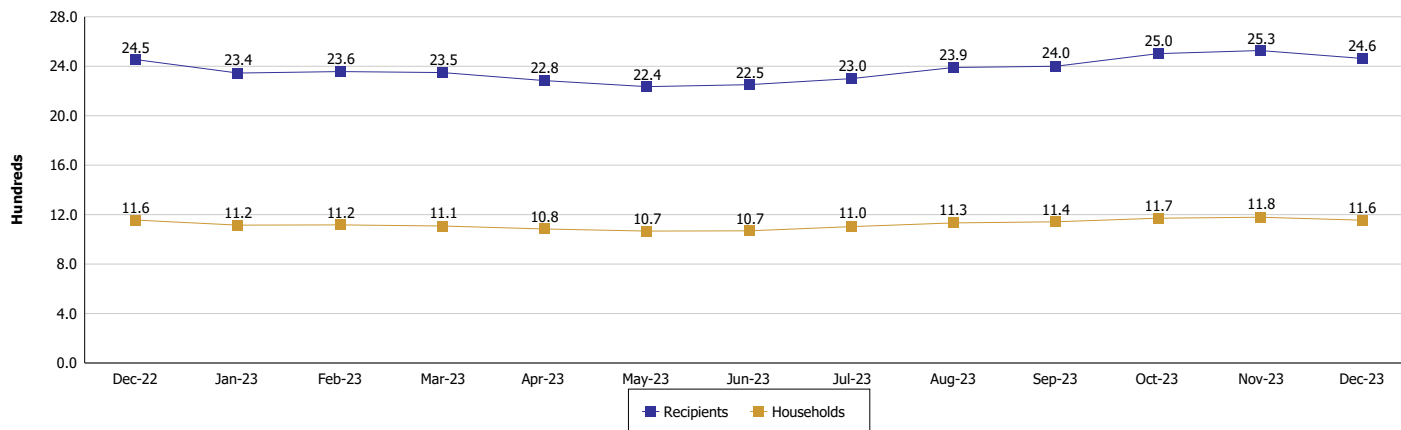
Location: Clay County

SUPPLEMENTAL NUTRITION ASSISTANCE PROGRAM (SNAP)

SNAP Issuance



SNAP Households and Recipients



Note:

Run Date: Jan 12, 2024



DIVISION OF FAMILY RESOURCES

Monthly Management Report

Reporting Month: December 2023

Location: Clay County

HIP 2.0 and SNAP

	December 2023	November 2023	December 2022	Annual Change
Total HIP 2.0 Members	3,249	3,312	3,508	-7.38%
HIP Members also SNAP Recipients	799	820	796	0.38%
Percentage HIP Members SNAP Recipients	24.6%	24.8%	22.7%	1.90
HIP Members SNAP ABAWDs	34	37	43	-20.93%
Percentage HIP Members SNAP ABAWDs	1.0%	1.1%	1.2%	-0.2

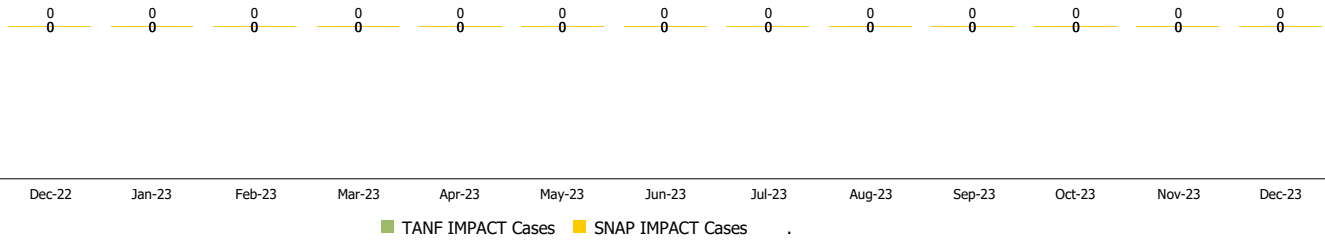
Monthly Management Report

Reporting Month: December 2023 Location: Clay County

INDIANA MANPOWER PLACEMENT AND COMPREHENSIVE TRAINING (IMPACT)

	December 2023	November 2023	December 2022	Annual Change
Number of IMPACT cases	0	0	0	
Number of TANF IMPACT adults	0	0	0	
Number of SNAP IMPACT Cases	0	0	0	
Total number of adults employed	8	8	4	100.00%
Number of TANF IMPACT adults newly employed (within past 30 days)	0	0	0	
Number of SNAP IMPACT adults employed	8	8	4	100.00%
Total number of adults ineligible due to employment	10	6	2	400.00%
Number of TANF adults ineligible due to employment	0	0	0	
Number of SNAP adults ineligible due to employment	10	6	2	400.00%

IMPACT Caseloads
(SNAP, TANF, Total Caseload)



Note: Effective January 2022, these numbers have been adjusted to reflect only those actually participating in IMPACT.