



DIVISION OF FAMILY RESOURCES

Clark County Monthly Management Report July 2021

State of Indiana

Eric Holcomb
Governor

Family and Social Services Administration

Jennifer Sullivan, M.D.
Secretary

Division of Family Resources

Adrienne Shields
Director

For questions regarding data on this report contact:
office.Communications@fssa.IN.gov



State of Indiana

Published August 2021



DIVISION OF FAMILY RESOURCES

Monthly Management Report

Reporting Month: July 2021

Location: Clark County

TEMPORARY ASSISTANCE FOR NEEDY FAMILIES (TANF)

Child-Only and One-Parent Families	Jul 31, 2021	June 2021	July 2020	Annual Change
Number of families receiving TANF Grants	116	119	134	-13.43%
Total number of grant recipients	227	237	264	-14.02%
Number of adult grant recipients	36	39	31	16.13%
Number of child grant recipients	191	198	233	-18.03%
Total payments	\$22,303	\$22,067	\$26,029	-14.31%
Average payment per case	\$192.27	\$185.44	\$194.25	-1.02%
Average payment per recipient	\$98.25	\$93.11	\$98.59	-0.35%
Number of cases with benefits reduced to zero	6	4	3	100.00%
Number of recipients with benefits reduced to zero	15	11	12	25.00%
Number of adult recipients with benefit reduced to zero	5	2	3	66.67%
Number of child recipients with benefit reduced to zero	10	9	9	11.11%

Two-Parent Families	Jul 31, 2021	June 2021	July 2020	Annual Change
Number of families receiving TANF Grants	16	21	10	60.00%
Total number of grant recipients	34	47	31	9.68%
Number of adult grant recipients	9	12	11	-18.18%
Number of child grant recipients	25	35	20	25.00%
Total payments	\$3,089	\$4,059	\$2,724	13.40%
Average payment per case	\$193.06	\$193.29	\$272.40	-29.13%
Average payment per recipient	\$90.85	\$86.36	\$87.87	3.39%
Number of cases with benefits reduced to zero	1	2	0	0%
Number of recipients with benefits reduced to zero	3	6	0	0%
Number of adult recipients with benefit reduced to zero	1	3	0	0%
Number of child recipients with benefit reduced to zero	2	3	0	0%

Note:

All data July 2014 and following will be broken out according to the new DFR region structure effective July 1 2014.

Source:



DIVISION OF FAMILY RESOURCES

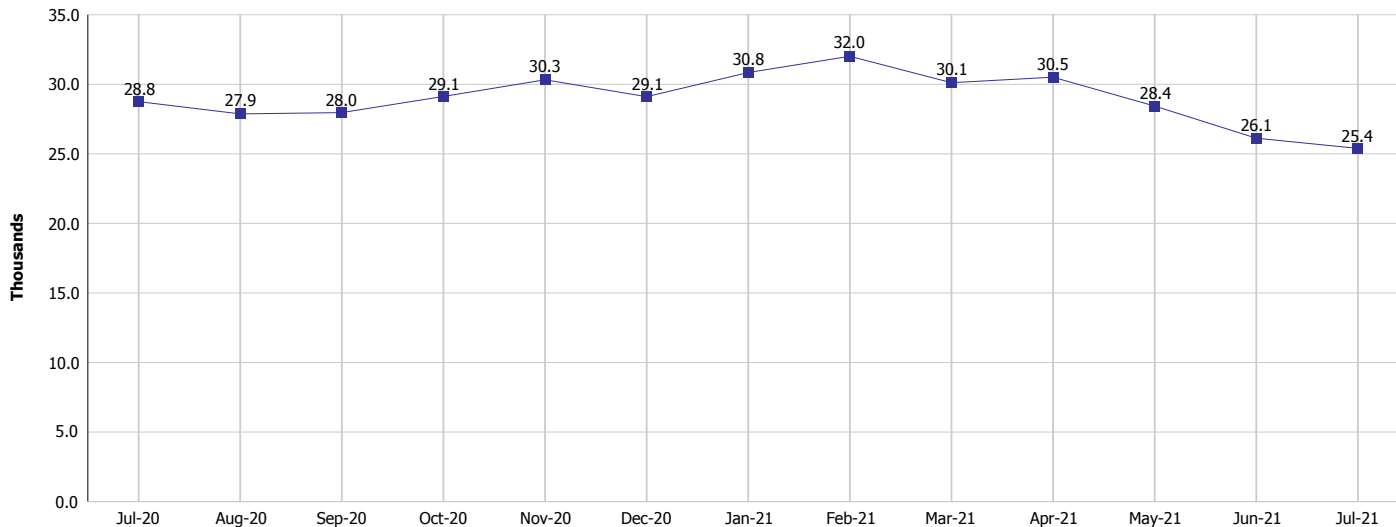
Monthly Management Report

Reporting Month: July 2021

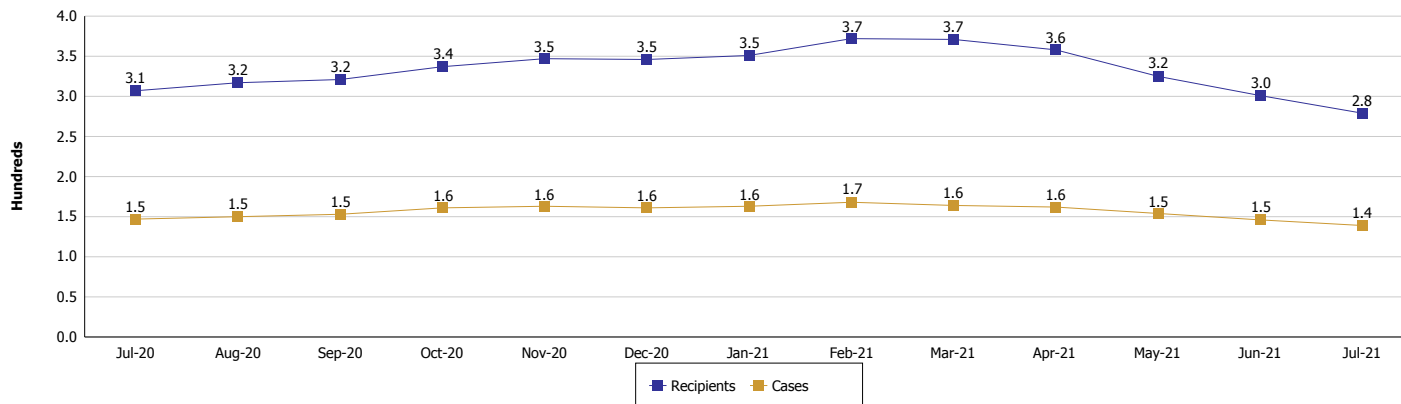
Location: Clark County

TEMPORARY ASSISTANCE FOR NEEDY FAMILIES (TANF)

TANF Regular And TANF Two-Parent Cash Assistance



TANF Cases and Recipients (TANF Regular and TANF Two-Parent)



Note:

All data July 2014 and following will be broken out according to the new DFR region structure effective July 1 2014.



DIVISION OF FAMILY RESOURCES

Monthly Management Report

Reporting Month: July 2021

Location: Clark County

SUPPLEMENTAL NUTRITION ASSISTANCE PROGRAM (SNAP)

	July 2021	June 2021	July 2020	Annual Change
Total issuance	\$1,926,523	\$1,981,655	\$1,611,427	19.55%
Number of households receiving SNAP benefits	4,137	4,248	4,360	-5.11%
Number of recipients	8,292	8,579	8,946	-7.31%
Average issuance per household	\$465.68	\$466.49	\$369.59	26.00%
Average issuance per recipient	\$232.34	\$230.99	\$180.13	28.98%

Note:

All data July 2014 and following will be broken out according to the new DFR region structure effective July 1 2014.



DIVISION OF FAMILY RESOURCES

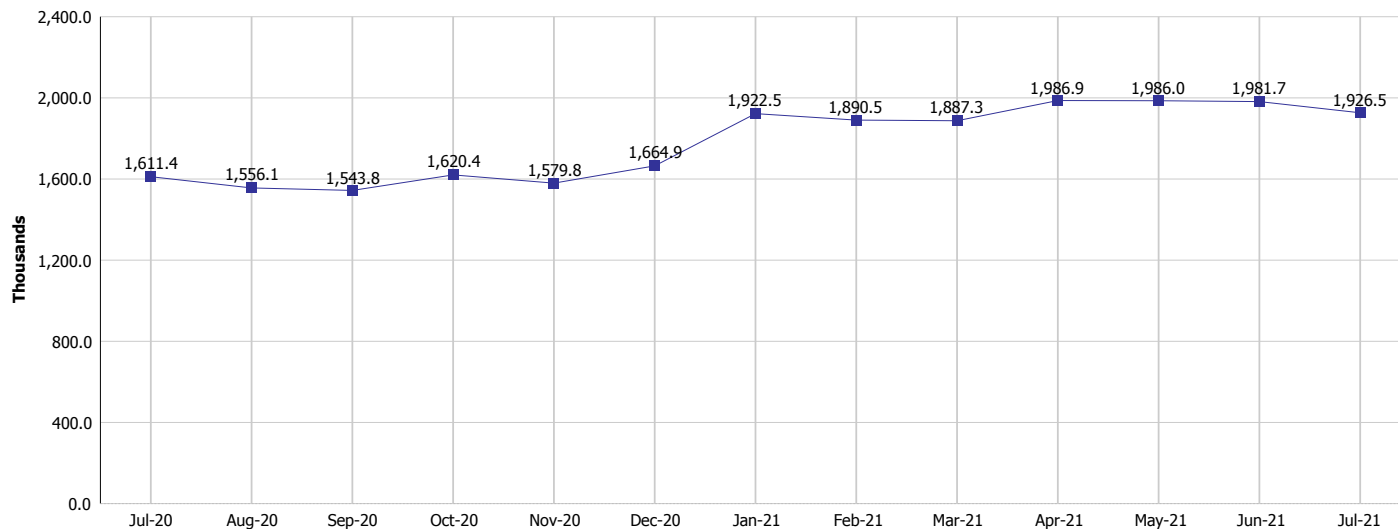
Monthly Management Report

Reporting Month: July 2021

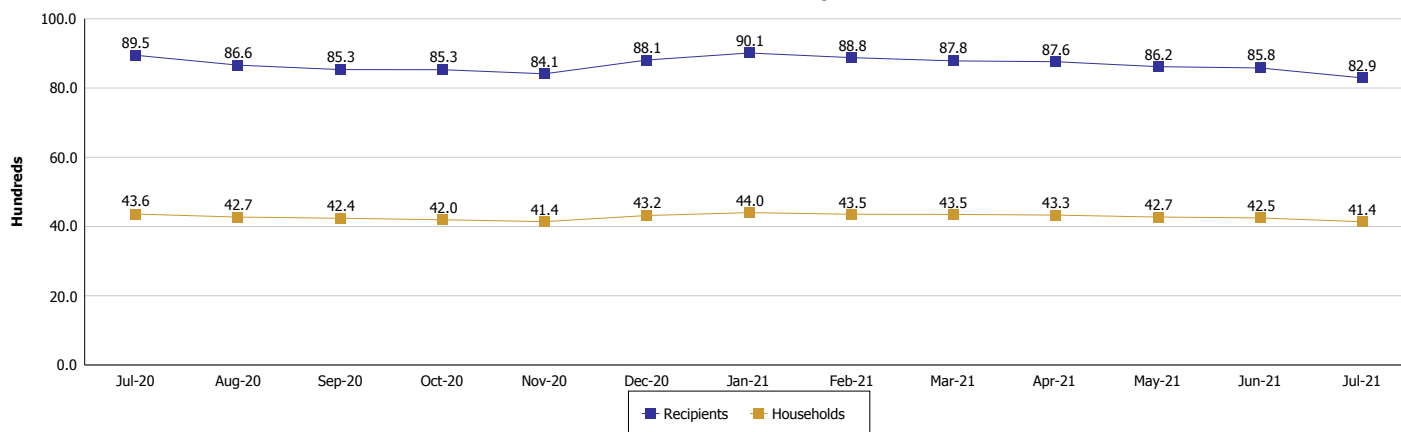
Location: Clark County

SUPPLEMENTAL NUTRITION ASSISTANCE PROGRAM (SNAP)

SNAP Issuance



SNAP Households and Recipients



Note:

All data July 2014 and following will be broken out according to the new DFR region structure effective July 1 2014.



DIVISION OF FAMILY RESOURCES

Monthly Management Report

Reporting Month: July 2021

Location: Clark County

HIP 2.0 and SNAP

	July 2021	June 2021	July 2020	Annual Change
Total HIP 2.0 Members	11,686	11,489	8,595	35.96%
HIP Members also SNAP Recipients	2,329	2,411	2,339	-0.43%
Percentage HIP Members SNAP Recipients	19.9%	21.0%	27.2%	-7.28
HIP Members SNAP ABAWDs	0	0	2	-100.00%
Percentage HIP Members SNAP ABAWDs	0	0	0.0%	0.0

Note:

All data July 2014 and following will be broken out according to the new DFR region structure effective July 1 2014.



DIVISION OF FAMILY RESOURCES

Monthly Management Report

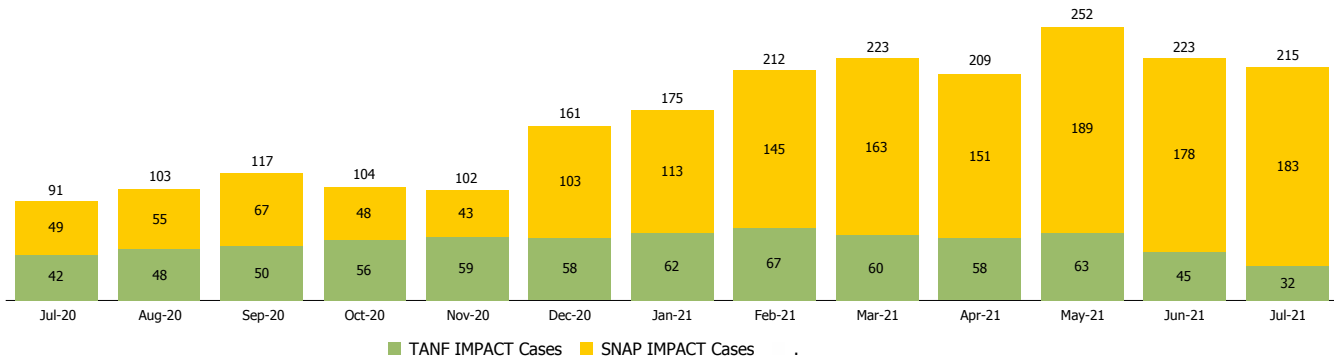
Reporting Month: July 2021

Location: Clark County

INDIANA MANPOWER PLACEMENT AND COMPREHENSIVE TRAINING (IMPACT)

	July 2021	June 2021	July 2020	Annual Change
Number of IMPACT cases	215	223	91	136.26%
Number of TANF IMPACT adults	32	45	42	-23.81%
Number of SNAP IMPACT Cases	183	178	49	273.47%
Total number of adults employed	34	32	11	209.09%
Number of TANF IMPACT adults newly employed (within past 30 days)	5	4	4	25.00%
Number of SNAP IMPACT adults employed	29	28	7	314.29%
Total number of adults ineligible due to employment	56	43	101	-44.55%
Number of TANF adults ineligible due to employment	0	1	2	-100.00%
Number of SNAP adults ineligible due to employment	56	42	99	-43.43%

IMPACT Caseloads
(SNAP, TANF, Total Caseload)



Note:

All data July 2014 and following will be broken out according to the new DFR region structure effective July 1 2014.