



## DIVISION OF FAMILY RESOURCES

# **Blackford County Monthly Management Report October 2025**

### **State of Indiana**

Mike Braun  
Governor

### **Family and Social Services Administration**

Mitch Roob  
Secretary

### **Division of Family Resources**

Sunshine Beam  
Director

For questions regarding data on this report contact:  
[office.Communications@fssa.IN.gov](mailto:office.Communications@fssa.IN.gov)



## **State of Indiana**

Published November 2025



## DIVISION OF FAMILY RESOURCES

### Monthly Management Report

Reporting Month: October 2025

Location: Blackford County

#### TEMPORARY ASSISTANCE FOR NEEDY FAMILIES (TANF)

Child-Only and One-Parent Families	October 2025	September 2025	October 2024	Annual Change
Number of families receiving TANF Grants	12	10	4	200.00%
Total number of grant recipients	22	17	5	340.00%
Number of adult grant recipients	4	2	1	300.00%
Number of child grant recipients	18	15	4	350.00%
Total payments	\$4,170	\$3,384	\$890	368.54%
Average payment per case	\$347.50	\$338.40	\$222.50	56.18%
Average payment per recipient	\$189.55	\$199.06	\$178.00	6.49%
Number of cases with benefits reduced to zero	0	0	0	0%
Number of recipients with benefits reduced to zero	0	0	0	0%
Number of adult recipients with benefit reduced to zero	0	0	0	0%
Number of child recipients with benefit reduced to zero	0	0	0	0%

Pregnancy TANF Families	October 2025	September 2025	October 2024	Annual Change
Number of families receiving TANF Grants	0	0	0	0%
Total number of grant recipients	0	0	0	0%
Total payments	\$0.00	\$0.00	\$0.00	0%
Average payment per case	\$0.00	\$0.00	\$0.00	0.00%
Average payment per recipient	\$0.00	\$0.00	\$0.00	0.00%
Number of cases with benefits reduced to zero	0	0	0	0%
Number of recipients with benefits reduced to zero	0	0	0	0%



## DIVISION OF FAMILY RESOURCES

### Monthly Management Report

Two-Parent Families	October 2025	September 2025	October 2024	Annual Change
Number of families receiving TANF Grants	0	0	1	-100.00%
Total number of grant recipients	0	0	5	-100.00%
Number of adult grant recipients	0	0	2	-100.00%
Number of child grant recipients	0	0	3	-100.00%
Total payments	\$0	\$0	\$721	-100.00%
Average payment per case	\$0.00	\$0.00	\$721.00	-100.00%
Average payment per recipient	\$0.00	\$0.00	\$144.20	-100.00%
Number of cases with benefits reduced to zero	0	0	0	0%
Number of recipients with benefits reduced to zero	0	0	0	0%
Number of adult recipients with benefit reduced to zero	0	0	0	0%
Number of child recipients with benefit reduced to zero	0	0	0	0%

Note: The two-parent case count includes cases in which a parent living in the home is excluded from receiving TANF benefits but whose income is used in the TANF eligibility determination.



## DIVISION OF FAMILY RESOURCES

### Monthly Management Report

Reporting Month: October 2025

Location: Blackford County

#### TANF - APPLICATIONS

	October 2025	September 2025	October 2024	Annual Change
Number of Applications	3	10	9	-66.67%

#### TANF - RECIPIENTS BY ZIP CODE

ZIP Code	Households	Recipients
47348	10	20
47359	2	2
Total	12	22



## DIVISION OF FAMILY RESOURCES

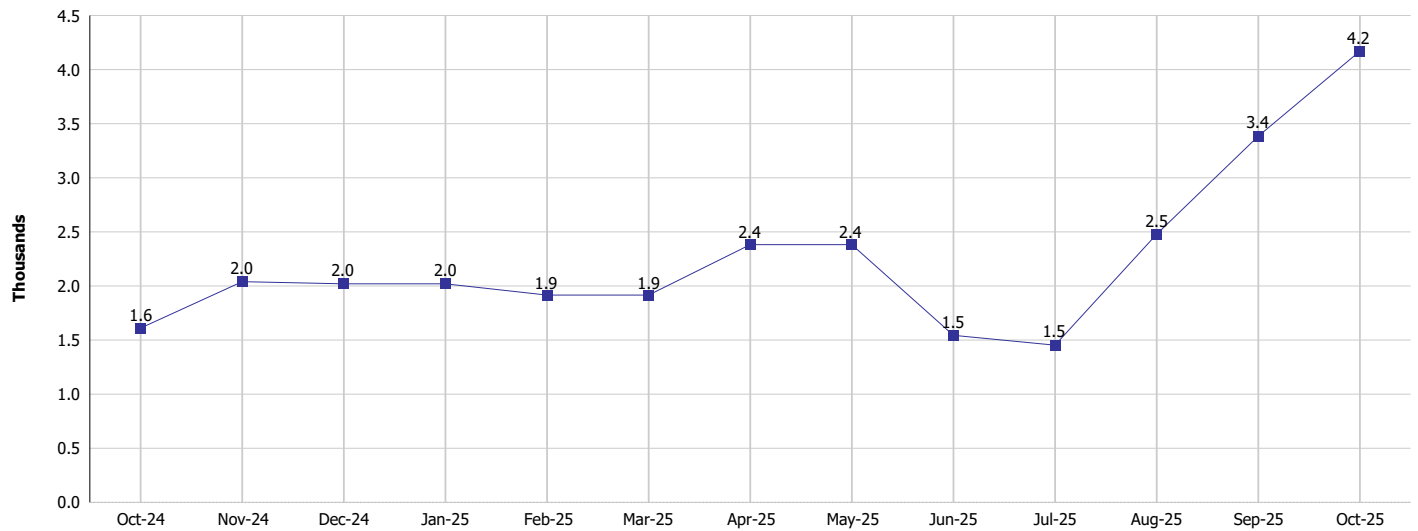
### Monthly Management Report

Reporting Month: October 2025

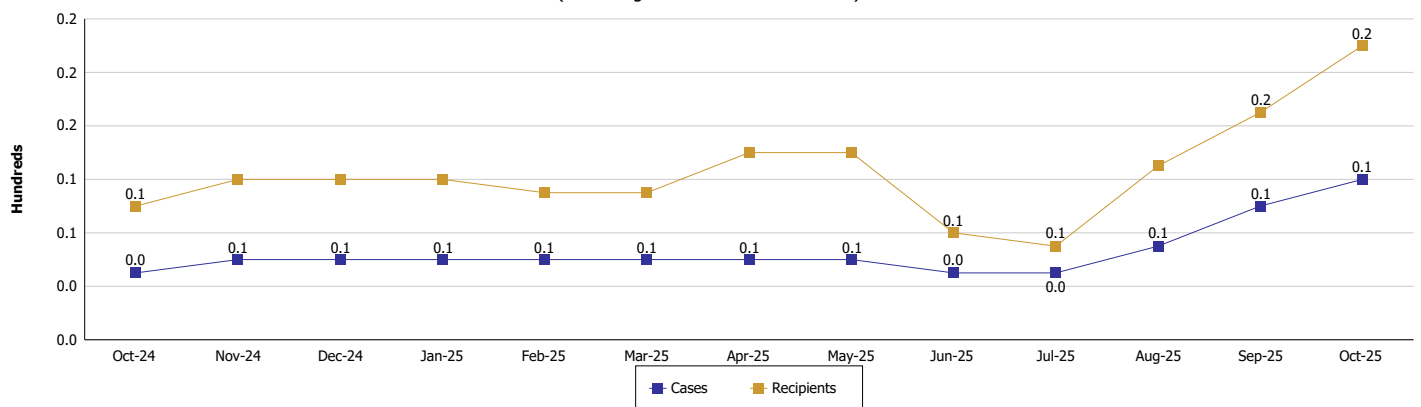
Location: Blackford County

#### TEMPORARY ASSISTANCE FOR NEEDY FAMILIES (TANF)

TANF Regular And TANF Two-Parent Cash Assistance



TANF Cases and Recipients  
(TANF Regular and TANF Two-Parent)





**DIVISION OF FAMILY RESOURCES**

**Monthly Management Report**

Reporting Month: October 2025

Location: Blackford County

**SUPPLEMENTAL NUTRITION ASSISTANCE PROGRAM (SNAP)**

	October 2025	September 2025	October 2024	Annual Change
Total issuance	\$263,143	\$246,791	\$259,984	1.22%
Number of households receiving SNAP benefits	674	668	675	-0.15%
Number of recipients	1,375	1,348	1,363	0.88%
Average issuance per household	\$390.42	\$369.45	\$385.16	1.37%
Average issuance per recipient	\$191.38	\$183.08	\$190.74	0.34%
Number of Applications	49	68	79	-37.97%



## DIVISION OF FAMILY RESOURCES

### Monthly Management Report

Reporting Month: October 2025

Location: Blackford County

#### SNAP - RECIPIENTS BY ZIP CODE

ZIP Code	Households	Recipients
46237	1	5
46241	1	1
46989	1	1
47303	1	2
47336	10	23
47348	532	1,083
47359	128	260
<b>Totals</b>	<b>674</b>	<b>1,375</b>



## DIVISION OF FAMILY RESOURCES

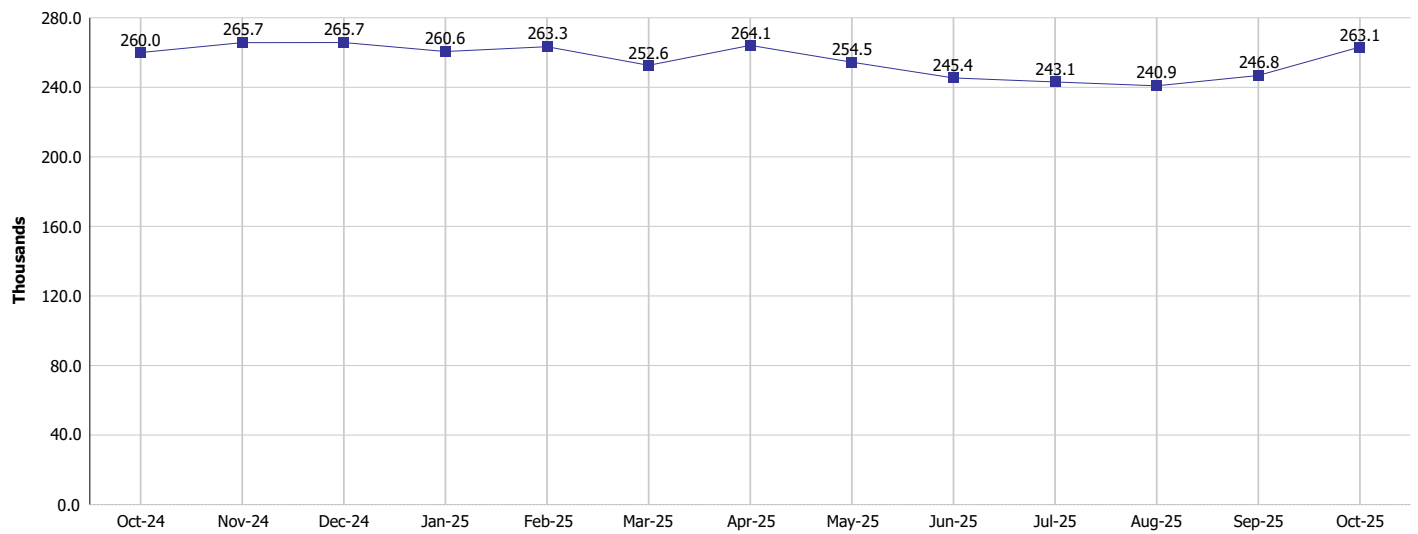
### Monthly Management Report

Reporting Month: October 2025

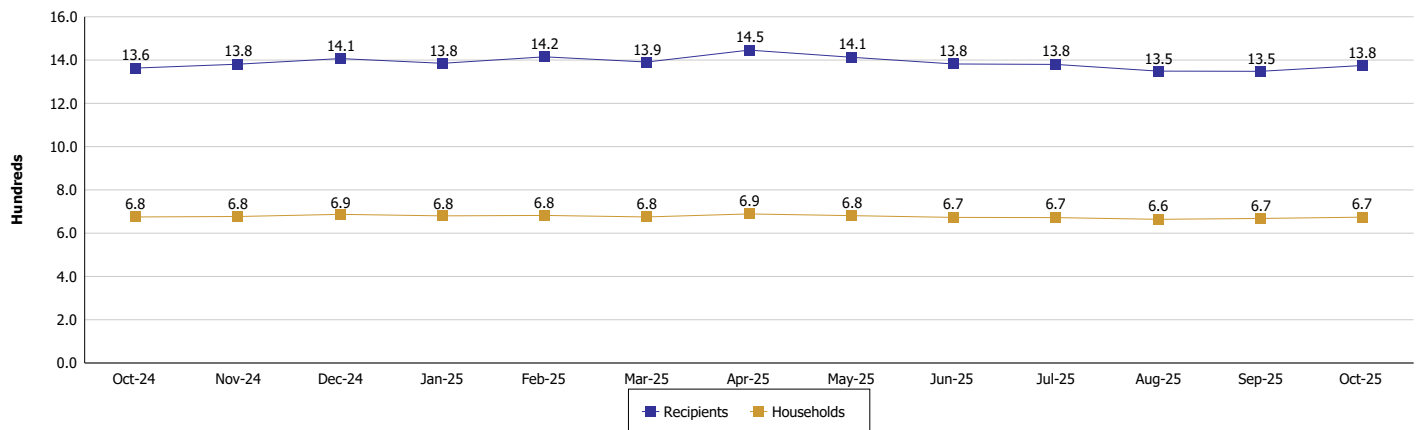
Location: Blackford County

#### SUPPLEMENTAL NUTRITION ASSISTANCE PROGRAM (SNAP)

SNAP Issuance



SNAP Households and Recipients







## DIVISION OF FAMILY RESOURCES

### Monthly Management Report

Reporting Month: October 2025

Location: Blackford County

#### HIP 2.0 and SNAP

	October 2025	September 2025	October 2024	Annual Change
Total HIP 2.0 Members	1,232	1,213	1,460	-15.62%
HIP Members also SNAP Recipients	416	399	434	-4.15%
Percentage HIP Members SNAP Recipients	33.8%	32.9%	29.7%	4.04
HIP Members SNAP ABAWDs	7	7	24	-70.83%
Percentage HIP Members SNAP ABAWDs	0.6%	0.6%	1.6%	-1.1



## DIVISION OF FAMILY RESOURCES

### Monthly Management Report

Reporting Month: October 2025

Location: Blackford County

#### INDIANA MANPOWER PLACEMENT AND COMPREHENSIVE TRAINING (IMPACT)

	October 2025	September 2025	October 2024	Annual Change
Number of IMPACT cases	0	2	0	
Number of TANF IMPACT adults	0	1	0	
Number of SNAP IMPACT Cases	0	1	0	
Total number of adults employed	0	7	4	-100.00%
Number of TANF IMPACT adults newly employed (within past 30 days)	0	0	0	
Number of SNAP IMPACT adults employed	0	7	4	-100.00%
Total number of adults ineligible due to employment	4	6	3	33.33%
Number of TANF adults ineligible due to employment	0	0	0	
Number of SNAP adults ineligible due to employment	4	6	3	33.33%

**IMPACT Caseloads**  
(SNAP, TANF, Total Caseload)

