



## DIVISION OF FAMILY RESOURCES

# **Bartholomew County Monthly Management Report October 2025**

### **State of Indiana**

Mike Braun  
Governor

### **Family and Social Services Administration**

Mitch Roob  
Secretary

### **Division of Family Resources**

Sunshine Beam  
Director

For questions regarding data on this report contact:  
[office.Communications@fssa.IN.gov](mailto:office.Communications@fssa.IN.gov)



## **State of Indiana**

Published November 2025



## DIVISION OF FAMILY RESOURCES

### Monthly Management Report

Reporting Month: October 2025

Location: Bartholomew County

#### TEMPORARY ASSISTANCE FOR NEEDY FAMILIES (TANF)

Child-Only and One-Parent Families	October 2025	September 2025	October 2024	Annual Change
Number of families receiving TANF Grants	47	43	46	2.17%
Total number of grant recipients	106	95	92	15.22%
Number of adult grant recipients	19	16	13	46.15%
Number of child grant recipients	87	79	79	10.13%
Total payments	\$18,628	\$16,764	\$16,687	11.63%
Average payment per case	\$396.34	\$389.86	\$362.76	9.26%
Average payment per recipient	\$175.74	\$176.46	\$181.38	-3.11%
Number of cases with benefits reduced to zero	1	1	1	0.00%
Number of recipients with benefits reduced to zero	1	1	1	0.00%
Number of adult recipients with benefit reduced to zero	0	0	0	0%
Number of child recipients with benefit reduced to zero	1	1	1	0.00%

Pregnancy TANF Families	October 2025	September 2025	October 2024	Annual Change
Number of families receiving TANF Grants	1	0	0	0%
Total number of grant recipients	1	0	0	0%
Total payments	\$248.00	\$0.00	\$0.00	0%
Average payment per case	\$248.00	\$0.00	\$0.00	0.00%
Average payment per recipient	\$248.00	\$0.00	\$0.00	0.00%
Number of cases with benefits reduced to zero	0	0	0	0%
Number of recipients with benefits reduced to zero	0	0	0	0%



## DIVISION OF FAMILY RESOURCES

### Monthly Management Report

Two-Parent Families	October 2025	September 2025	October 2024	Annual Change
Number of families receiving TANF Grants	0	0	4	-100.00%
Total number of grant recipients	0	0	14	-100.00%
Number of adult grant recipients	0	0	7	-100.00%
Number of child grant recipients	0	0	7	-100.00%
Total payments	\$0	\$0	\$2,280	-100.00%
Average payment per case	\$0.00	\$0.00	\$570.00	-100.00%
Average payment per recipient	\$0.00	\$0.00	\$162.86	-100.00%
Number of cases with benefits reduced to zero	0	0	0	0%
Number of recipients with benefits reduced to zero	0	0	0	0%
Number of adult recipients with benefit reduced to zero	0	0	0	0%
Number of child recipients with benefit reduced to zero	0	0	0	0%

Note: The two-parent case count includes cases in which a parent living in the home is excluded from receiving TANF benefits but whose income is used in the TANF eligibility determination.



## DIVISION OF FAMILY RESOURCES

### Monthly Management Report

Reporting Month: October 2025

Location: Bartholomew County

#### TANF - APPLICATIONS

	October 2025	September 2025	October 2024	Annual Change
Number of Applications	50	53	73	-31.51%

#### TANF - RECIPIENTS BY ZIP CODE

ZIP Code	Households	Recipients
46124	1	3
47201	24	52
47203	14	28
47232	2	6
47236	1	3
47244	1	2
47246	3	8
None	0	4
<b>Total</b>	<b>46</b>	<b>106</b>



## DIVISION OF FAMILY RESOURCES

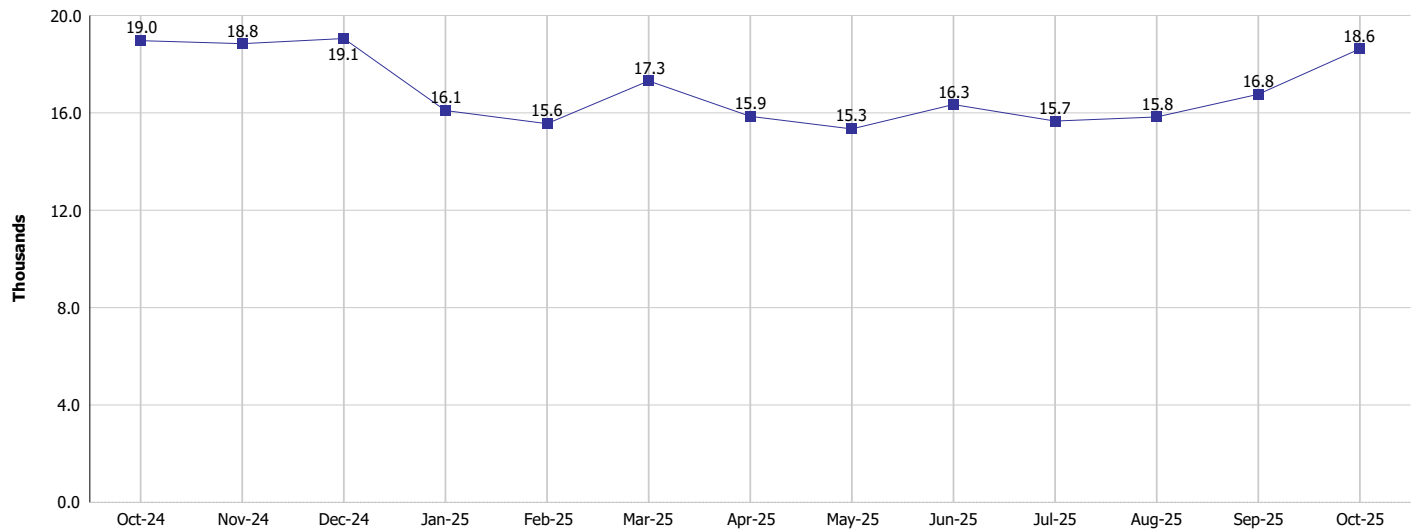
### Monthly Management Report

Reporting Month: October 2025

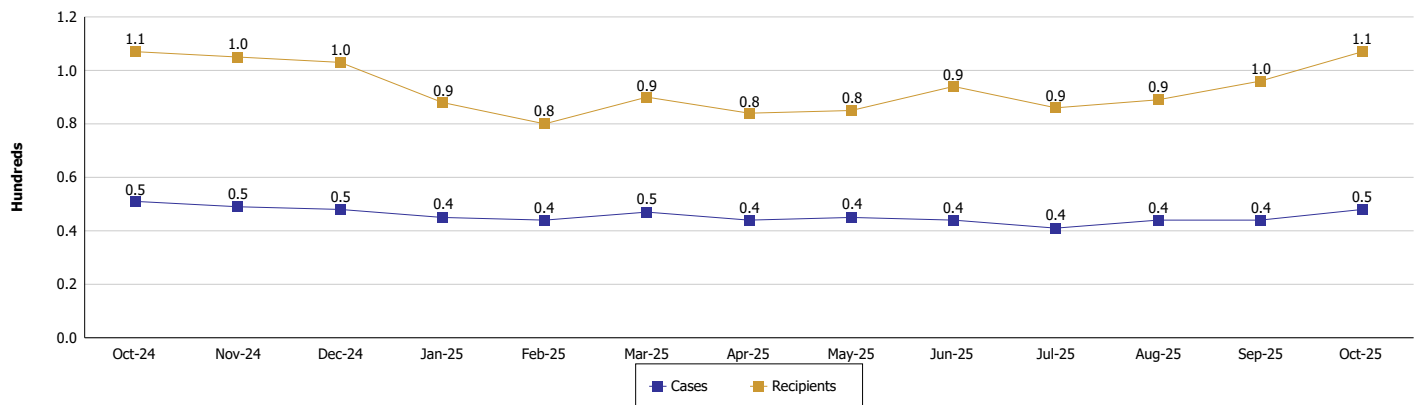
Location: Bartholomew County

#### TEMPORARY ASSISTANCE FOR NEEDY FAMILIES (TANF)

TANF Regular And TANF Two-Parent Cash Assistance



TANF Cases and Recipients  
(TANF Regular and TANF Two-Parent)





**DIVISION OF FAMILY RESOURCES**

**Monthly Management Report**

Reporting Month: October 2025

Location: Bartholomew County

**SUPPLEMENTAL NUTRITION ASSISTANCE PROGRAM (SNAP)**

	October 2025	September 2025	October 2024	Annual Change
Total issuance	\$1,016,423	\$1,010,842	\$1,133,532	-10.33%
Number of households receiving SNAP benefits	2,730	2,735	2,904	-5.99%
Number of recipients	5,328	5,382	5,781	-7.84%
Average issuance per household	\$372.32	\$369.59	\$390.33	-4.61%
Average issuance per recipient	\$190.77	\$187.82	\$196.08	-2.71%
Number of Applications	315	345	405	-22.22%



## DIVISION OF FAMILY RESOURCES

### Monthly Management Report

Reporting Month: October 2025

Location: Bartholomew County

#### SNAP - RECIPIENTS BY ZIP CODE

ZIP Code	Households	Recipients
46038	1	1
46124	63	156
46131	1	2
46176	4	9
46201	1	1
46214	1	1
46225	1	1
46241	1	1
47129	1	1
47201	1,644	3,155
47202	12	15
47203	741	1,413
47220	1	1
47223	1	5
47226	14	45
47232	49	115
47236	5	11
47240	2	2
47244	14	37
47246	114	245
47247	15	25
47250	2	2
47265	2	2
47274	3	7
47280	35	71
47448	1	3
None	1	1
<b>Totals</b>	<b>2,730</b>	<b>5,328</b>



## DIVISION OF FAMILY RESOURCES

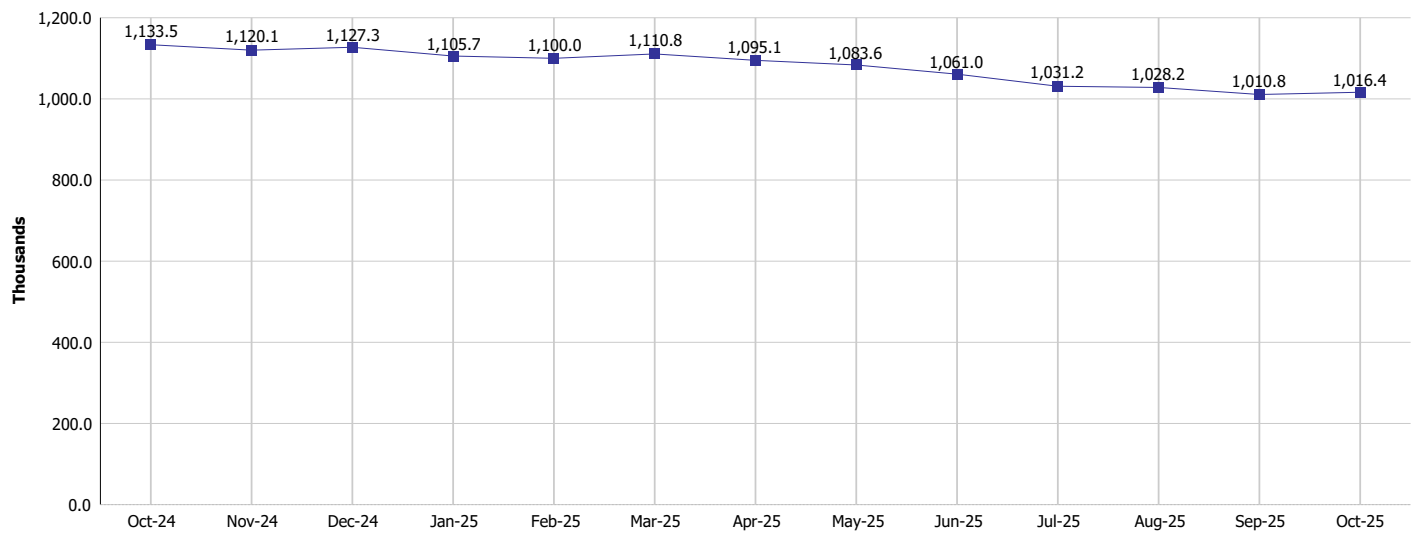
### Monthly Management Report

Reporting Month: October 2025

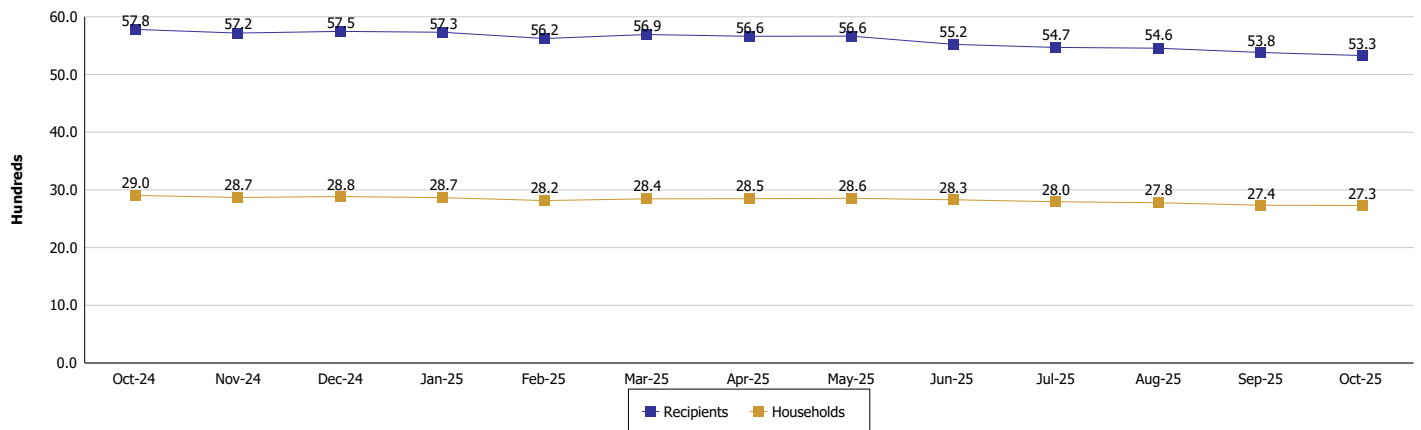
Location: Bartholomew County

#### SUPPLEMENTAL NUTRITION ASSISTANCE PROGRAM (SNAP)

SNAP Issuance



SNAP Households and Recipients







## DIVISION OF FAMILY RESOURCES

### Monthly Management Report

Reporting Month: October 2025

Location: Bartholomew County

#### HIP 2.0 and SNAP

	October 2025	September 2025	October 2024	Annual Change
Total HIP 2.0 Members	6,486	6,551	7,413	-12.51%
HIP Members also SNAP Recipients	1,688	1,700	1,785	-5.43%
Percentage HIP Members SNAP Recipients	26.0%	26.0%	24.1%	1.95
HIP Members SNAP ABAWDs	33	29	51	-35.29%
Percentage HIP Members SNAP ABAWDs	0.5%	0.4%	0.7%	-0.2



## DIVISION OF FAMILY RESOURCES

### Monthly Management Report

Reporting Month: October 2025

Location: Bartholomew County

#### INDIANA MANPOWER PLACEMENT AND COMPREHENSIVE TRAINING (IMPACT)

	October 2025	September 2025	October 2024	Annual Change
Number of IMPACT cases	4	2	10	-60.00%
Number of TANF IMPACT adults	2	1	4	-50.00%
Number of SNAP IMPACT Cases	2	1	6	-66.67%
Total number of adults employed	14	15	10	40.00%
Number of TANF IMPACT adults newly employed (within past 30 days)	0	1	1	-100.00%
Number of SNAP IMPACT adults employed	14	14	9	55.56%
Total number of adults ineligible due to employment	33	35	16	106.25%
Number of TANF adults ineligible due to employment	0	1	3	-100.00%
Number of SNAP adults ineligible due to employment	33	34	13	153.85%

**IMPACT Caseloads**  
(SNAP, TANF, Total Caseload)

