



Division of Family Resources

Statewide Monthly Management Report January 2026

State of Indiana

Mike Braun
Governor

Family and Social Services Administration

Mitch Roob
Secretary

Division of Family Resources

Sunshine Beam
Director

For questions regarding data on this report contact:
office.Communications@fssa.IN.gov



State of Indiana

Published March 2026



Division of Family Resources

Monthly Management Report

Reporting Month: January 2026

Location: Statewide

TEMPORARY ASSISTANCE FOR NEEDY FAMILIES (TANF)

Child-Only and One-Parent Families	January 2026	December 2025	January 2025	Annual Change
Number of families receiving TANF Grants	4,620	4,745	5,036	-8.26%
Total number of grant recipients	10,985	11,357	11,595	-5.26%
Number of adult grant recipients	2,056	2,158	2,207	-6.84%
Number of child grant recipients	8,929	9,199	9,388	-4.89%
Total payments	\$1,871,592.00	\$1,929,970.00	\$2,012,373.00	-7.00%
Average payment per case	\$405.11	\$406.74	\$399.60	1.38%
Average payment per recipient	\$170.38	\$169.94	\$173.56	-1.83%
Number of cases with benefits reduced to zero	110	114	115	-4.35%
Number of recipients with benefits reduced to zero	221	239	200	10.50%
Number of adult recipients with benefit reduced to zero	26	31	28	-7.14%
Number of child recipients with benefit reduced to zero	195	208	172	13.37%

Pregnancy TANF Families	January 2026	December 2025	January 2025	Annual Change
Number of families receiving TANF Grants	100	117	117	-14.53%
Total number of grant recipients	100	117	117	-14.53%
Total payments	\$24,383.00	\$26,930.00	\$29,333.00	-16.88%
Average payment per case	\$243.83	\$230.17	\$250.71	-2.74%
Average payment per recipient	\$243.83	\$230.17	\$250.71	-2.74%
Number of cases with benefits reduced to zero	0	0	5	-100.00%
Number of recipients with benefits reduced to zero	0	0	5	-100.00%



Division of Family Resources

Monthly Management Report

Two-Parent Families	January 2026	December 2025	January 2025	Annual Change
Number of families receiving TANF Grants	74	91	479	-84.55%
Total number of grant recipients	296	373	1,862	-84.10%
Number of adult grant recipients	136	170	948	-85.65%
Number of child grant recipients	160	203	914	-82.49%
Total payments	\$42,509.00	\$50,781.00	\$269,492.00	-84.23%
Average payment per case	\$574.45	\$558.03	\$562.61	2.10%
Average payment per recipient	\$143.61	\$136.14	\$144.73	-0.77%
Number of cases with benefits reduced to zero	2	4	2	0.00%
Number of recipients with benefits reduced to zero	10	17	7	42.86%
Number of adult recipients with benefit reduced to zero	4	8	4	0.00%
Number of child recipients with benefit reduced to zero	6	9	3	100.00%

Note: The two-parent case count includes cases in which a parent living in the home is excluded from receiving TANF benefits but whose income is used in the TANF eligibility determination.



Division of Family Resources

Monthly Management Report

Reporting Month: January 2026

Location: Statewide

TANF - APPLICATIONS

	January 2026	December 2025	January 2025	Annual Change
Number of Applications	5,480	5,503	7,260	-24.52%



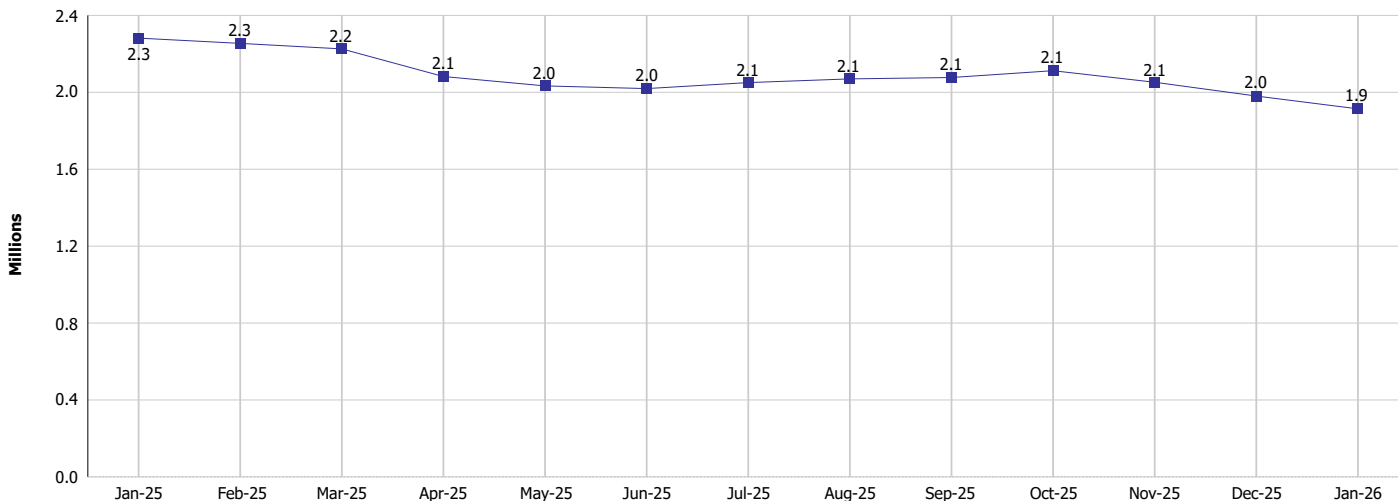
Monthly Management Report

Reporting Month: January 2026

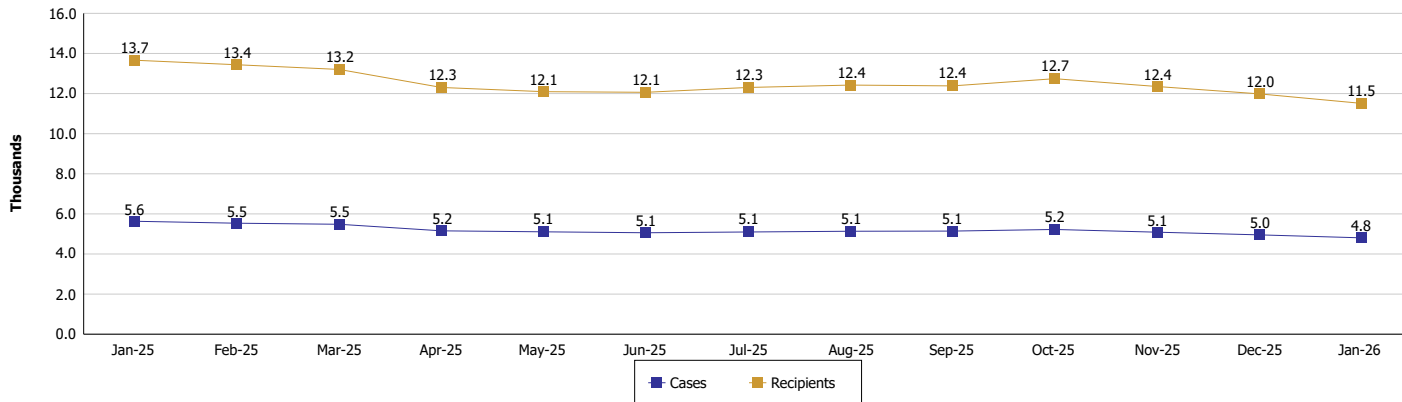
Location: Statewide

TEMPORARY ASSISTANCE FOR NEEDY FAMILIES (TANF)

TANF Cash Assistance (TANF Regular and TANF Two-Parent)



TANF Cases and Recipients (TANF Regular and TANF Two-Parent)





Division of Family Resources

Monthly Management Report

Reporting Month: January 2026

Location: Statewide

SUPPLEMENTAL NUTRITION ASSISTANCE PROGRAM (SNAP)

	January 2026	December 2025	January 2025	Annual Change
Total issuance	\$104,735,795	\$108,129,150	\$118,389,284	-11.53%
Number of households receiving SNAP benefits	258,858	264,392	286,243	-9.57%
Number of recipients	530,828	544,870	600,442	-11.59%
Average issuance per household	\$404.61	\$408.97	\$413.60	-2.17%
Average issuance per recipient	\$197.31	\$198.45	\$197.17	0.07%
Number of Applications	35,155	32,916	43,651	-19.46%

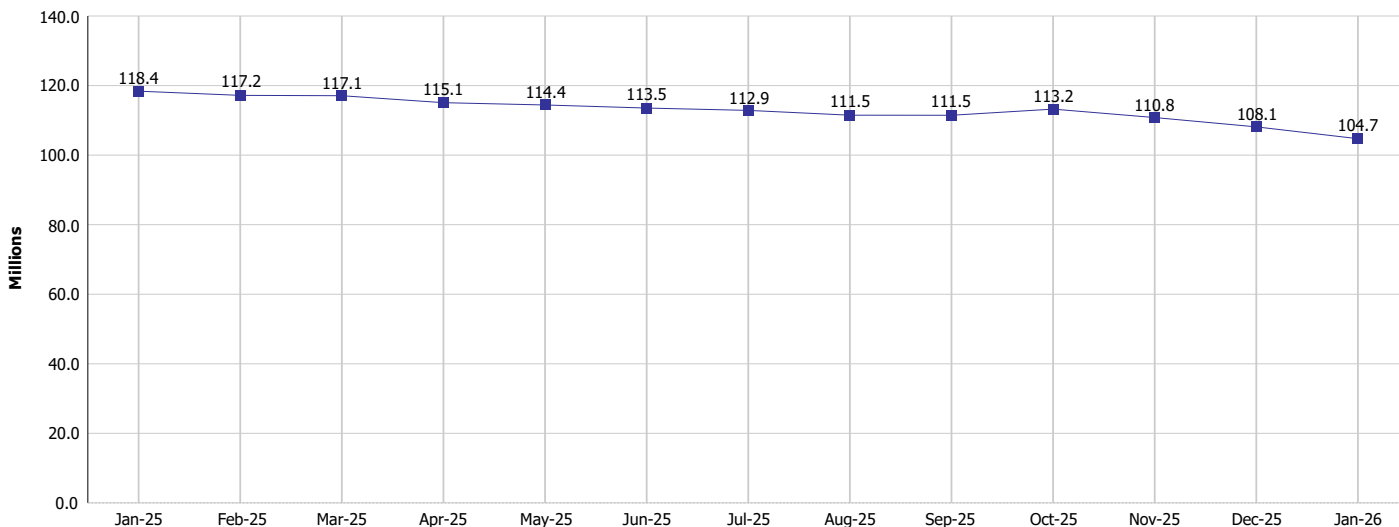


Monthly Management Report

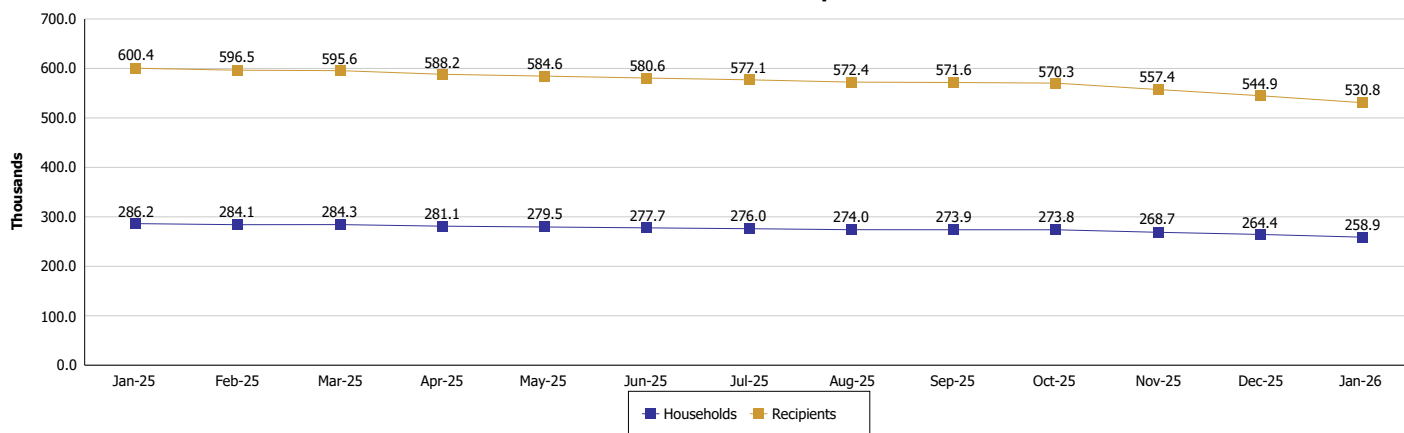
Reporting Month: January 2026 Location: Statewide

SUPPLEMENTAL NUTRITION ASSISTANCE PROGRAM (SNAP)

SNAP Issuance



SNAP Households and Recipients





Division of Family Resources

Monthly Management Report

Reporting Month: January 2026

Location: Statewide

HIP 2.0 and SNAP

	January 2026	December 2025	January 2025	Annual Change
Total HIP 2.0 Members	585,407	603,737	754,140	-22.37%
HIP Members also SNAP Recipients	151,983	157,229	179,555	-15.36%
Percentage HIP Members SNAP Recipients	26.0%	26.0%	23.8%	2.15
HIP Members SNAP ABAWDs	5,176	3,947	6,444	-19.68%
Percentage HIP Members SNAP ABAWDs	0.9%	0.7%	0.9%	0.0



Division of Family Resources

Monthly Management Report

Reporting Month: January 2026	Location: Statewide
-------------------------------	---------------------

INDIANA MANPOWER PLACEMENT AND COMPREHENSIVE TRAINING (IMPACT)

	January 2026	December 2025	January 2025	Annual Change
Number of IMPACT cases	388	537	487	-20.33%
Number of TANF IMPACT adults	126	202	174	-27.59%
Number of SNAP IMPACT Cases	262	335	313	-16.29%
Total number of adults employed	992	1,130	1,243	-20.19%
Number of TANF IMPACT adults newly employed (within past 30 days)	49	67	74	-33.78%
Number of SNAP IMPACT adults employed	943	1,063	1,169	-19.33%
Total number of adults ineligible due to employment	2,251	1,995	2,454	-8.27%
Number of TANF adults ineligible due to employment	51	37	113	-54.87%
Number of SNAP adults ineligible due to employment	2,200	1,958	2,341	-6.02%

IMPACT Caseloads
(SNAP, TANF, Total Caseload)

