



Division of Family Resources

Statewide Monthly Management Report December 2025

State of Indiana

Mike Braun
Governor

Family and Social Services Administration

Mitch Roob
Secretary

Division of Family Resources

Sunshine Beam
Director

For questions regarding data on this report contact:
office.Communications@fssa.IN.gov



State of Indiana

Published May 2026



Division of Family Resources

Monthly Management Report

Reporting Month: December 2025

Location: Statewide

TEMPORARY ASSISTANCE FOR NEEDY FAMILIES (TANF)

Child-Only and One-Parent Families	December 2025	November 2025	December 2024	Annual Change
Number of families receiving TANF Grants	4,745	4,851	5,217	-9.05%
Total number of grant recipients	11,357	11,590	11,990	-5.28%
Number of adult grant recipients	2,158	2,214	2,338	-7.70%
Number of child grant recipients	9,199	9,376	9,652	-4.69%
Total payments	\$1,929,970	\$1,986,216	\$2,078,637	-7.15%
Average payment per case	\$406.74	\$409.44	\$398.44	2.08%
Average payment per recipient	\$169.94	\$171.37	\$173.36	-1.98%
Number of cases with benefits reduced to zero	114	114	112	1.79%
Number of recipients with benefits reduced to zero	239	235	195	22.56%
Number of adult recipients with benefit reduced to zero	31	33	28	10.71%
Number of child recipients with benefit reduced to zero	208	202	167	24.55%

Pregnancy TANF Families	December 2025	November 2025	December 2024	Annual Change
Number of families receiving TANF Grants	117	128	126	-7.14%
Total number of grant recipients	117	128	126	-7.14%
Total payments	\$26,930.00	\$31,088.00	\$31,407.00	-14.25%
Average payment per case	\$230.17	\$242.88	\$249.26	-7.66%
Average payment per recipient	\$230.17	\$242.88	\$249.26	-7.66%
Number of cases with benefits reduced to zero	0	0	3	-100.00%
Number of recipients with benefits reduced to zero	0	0	3	-100.00%



Division of Family Resources

Monthly Management Report

Two-Parent Families	December 2025	November 2025	December 2024	Annual Change
Number of families receiving TANF Grants	91	119	526	-82.70%
Total number of grant recipients	373	510	2,056	-81.86%
Number of adult grant recipients	170	227	1,042	-83.69%
Number of child grant recipients	203	283	1,014	-79.98%
Total payments	\$50,781	\$66,132	\$294,428	-82.75%
Average payment per case	\$558.03	\$555.73	\$559.75	-0.31%
Average payment per recipient	\$136.14	\$129.67	\$143.20	-4.93%
Number of cases with benefits reduced to zero	4	4	1	300.00%
Number of recipients with benefits reduced to zero	17	18	3	466.67%
Number of adult recipients with benefit reduced to zero	8	8	2	300.00%
Number of child recipients with benefit reduced to zero	9	10	1	800.00%

Note: The two-parent case count includes cases in which a parent living in the home is excluded from receiving TANF benefits but whose income is used in the TANF eligibility determination.



Division of Family Resources

Monthly Management Report

Reporting Month: December 2025

Location: Statewide

TANF - APPLICATIONS

	December 2025	November 2025	December 2024	Annual Change
Number of Applications	5,503	4,073	6,774	-18.76%



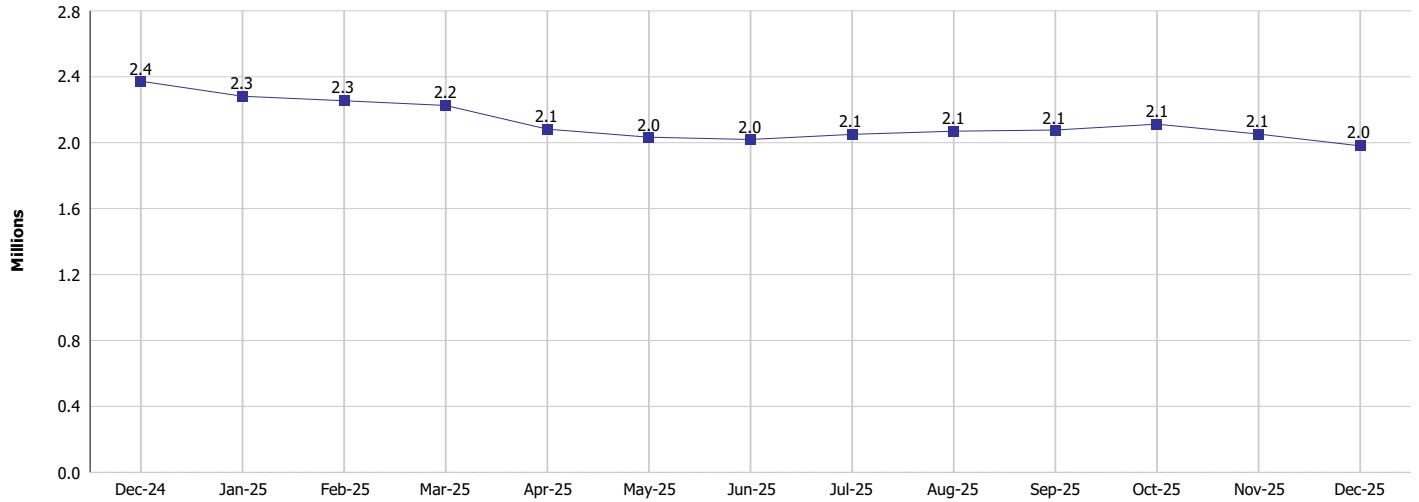
Monthly Management Report

Reporting Month: December 2025

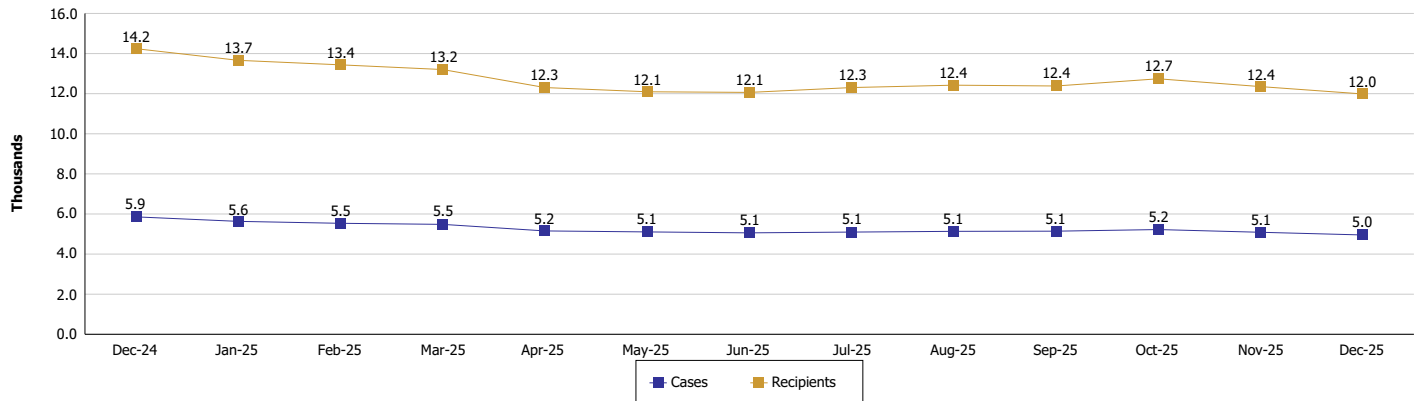
Location: Statewide

TEMPORARY ASSISTANCE FOR NEEDY FAMILIES (TANF)

TANF Cash Assistance (TANF Regular and TANF Two-Parent)



TANF Cases and Recipients (TANF Regular and TANF Two-Parent)





Division of Family Resources

Monthly Management Report

Reporting Month: December 2025

Location: Statewide

SUPPLEMENTAL NUTRITION ASSISTANCE PROGRAM (SNAP)

	December 2025	November 2025	December 2024	Annual Change
Total issuance	\$108,129,150	\$110,807,915	\$122,167,313	-11.49%
Number of households receiving SNAP benefits	264,392	268,746	290,304	-8.93%
Number of recipients	544,870	557,432	610,057	-10.69%
Average issuance per household	\$408.97	\$412.31	\$420.83	-2.82%
Average issuance per recipient	\$198.45	\$198.78	\$200.26	-0.90%
Number of Applications	32,916	23,711	37,118	-11.32%

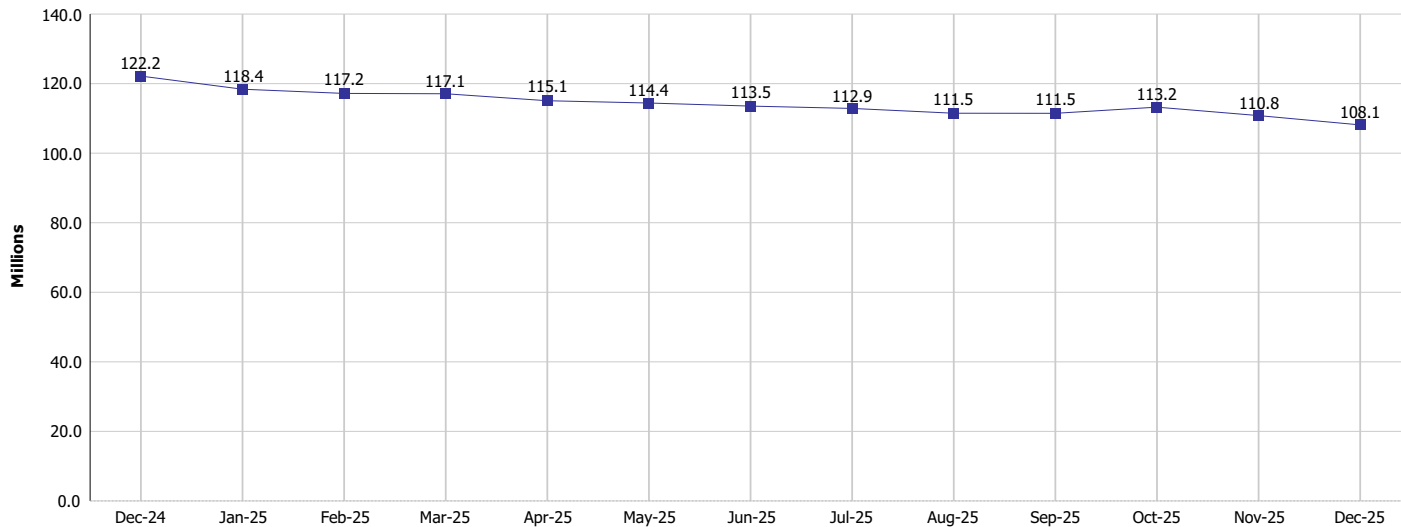


Monthly Management Report

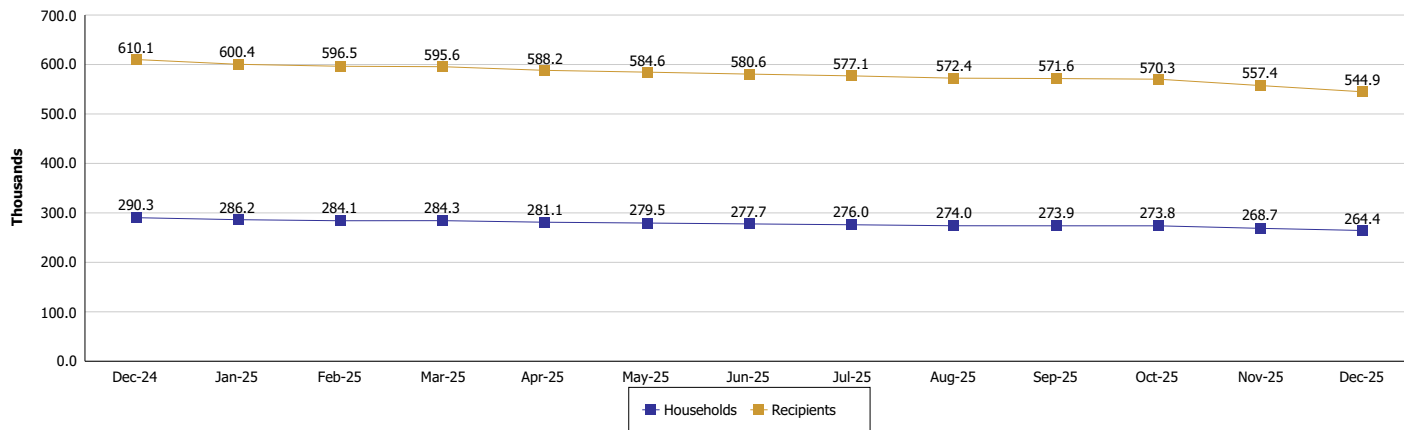
Reporting Month: December 2025 Location: Statewide

SUPPLEMENTAL NUTRITION ASSISTANCE PROGRAM (SNAP)

SNAP Issuance



SNAP Households and Recipients





Division of Family Resources

Monthly Management Report

Reporting Month: December 2025

Location: Statewide

HIP 2.0 and SNAP

	December 2025	November 2025	December 2024	Annual Change
Total HIP 2.0 Members	603,737	616,432	757,231	-20.27%
HIP Members also SNAP Recipients	157,229	160,686	182,528	-13.86%
Percentage HIP Members SNAP Recipients	26.0%	26.1%	24.1%	1.94
HIP Members SNAP ABAWDs	3,947	3,574	7,558	-47.78%
Percentage HIP Members SNAP ABAWDs	0.7%	0.6%	1.0%	-0.3



Monthly Management Report

Reporting Month: December 2025

Location: Statewide

INDIANA MANPOWER PLACEMENT AND COMPREHENSIVE TRAINING (IMPACT)

	December 2025	November 2025	December 2024	Annual Change
Number of IMPACT cases	537	594	389	38.05%
Number of TANF IMPACT adults	202	238	148	36.49%
Number of SNAP IMPACT Cases	335	356	241	39.00%
Total number of adults employed	1,130	1,207	1,463	-22.76%
Number of TANF IMPACT adults newly employed (within past 30 days)	67	67	71	-5.63%
Number of SNAP IMPACT adults employed	1,063	1,140	1,392	-23.64%
Total number of adults ineligible due to employment	1,995	1,772	1,478	34.98%
Number of TANF adults ineligible due to employment	37	38	102	-63.73%
Number of SNAP adults ineligible due to employment	1,958	1,734	1,376	42.30%

IMPACT Caseloads
(SNAP, TANF, Total Caseload)

