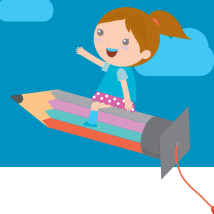


# Keep kids on healthy paths!



## DON'T SUSPEND & EXPEL FROM CHILD CARE



Kids can't control many things that make them more likely to be expelled.

### Who Gets Expelled?



Boys 3.5 times more than girls



4-year-olds twice more than 3-year-olds



African-Americans twice more than European-Americans and 5 times more than Asian-Americans

### Who Expels More?

Expulsion rates are HIGHER when programs

- keep more kids per teacher
- have teachers who feel stressed
- serve children for longer hours



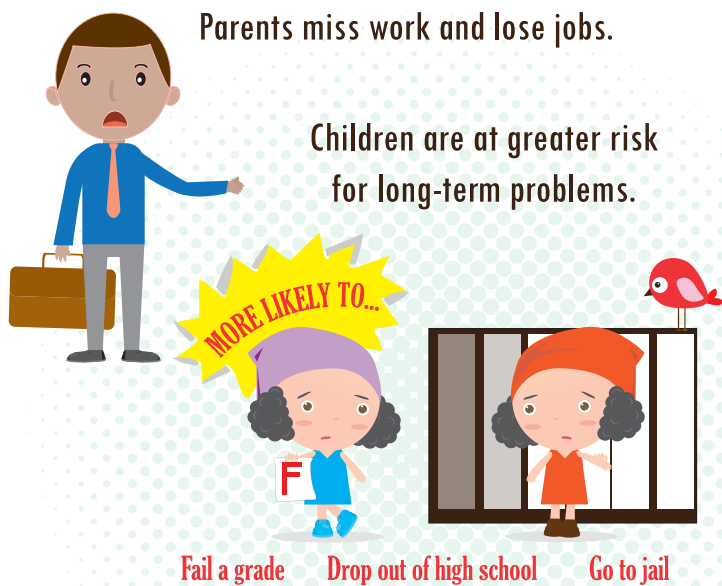
Expulsion can create more trouble for everyone.

### Prevention



There are RESEARCH-PROVEN ways to prevent suspension and expulsion:

- Train teachers to support social-emotional development and create developmentally appropriate learning environments
- Access early childhood mental health consultation
- Develop strong relationships with families



Office of Early  
Childhood and Out  
of School Learning

Adapted from resources created by the Arkansas Division  
of Child Care and Early Childhood Education