

December 22, 2008

Dear Members of the Distress Unit Appeal Board,

Thank you for this chance to review the impact of the Circuit Breaker on the Operations of the Beech Grove Public Library. Our library is located at 1102 Main Street, in the heart of the residential area of our community. Families have been visiting our location for over fifty years. Many are able to walk to our facility. We are located next to Central Elementary whose classes visit us once a week for a storytime and book circulation.

Our large, 17,000 square foot facility was remodeled and an addition added in 2002. We have a debt service fund to pay those leasing fees of approximately \$350,000 annually. We offer 53 hours of service per week with extended hours for groups using our meeting rooms. We have off-street parking, study areas, public computers, public copier, and book and media collections. We have reduced our hours from 60 to prepare to reduce our budget.

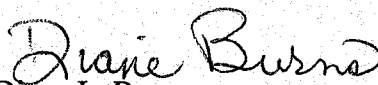
We have a reciprocal borrowing agreement with IMCPL which allows patrons to move freely between the two service areas to use facilities and collections. We have three professional librarians on staff: Director, Children's Librarian, and Reference Librarian.

We circulated over 142,000 items in 2007. This does not count all the service given to those who use the library for reading and study, programming or computer classes or usage. Our levy in 2007 for Operating was \$748,487, so a reduction of \$99,000 is a cut of 13%. This will be devastating to our institution causing us to not be able to serve in the manner needed.

I have been honored to have been awarded "Citizen of the Year" twice in my capacity of Library Director. Beech Grove is a unique, small town library. We offer a link to the world of learning and we hope to be able to continue to serve effectively.

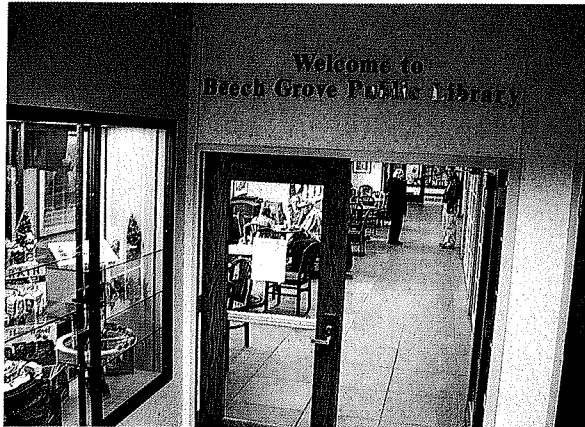
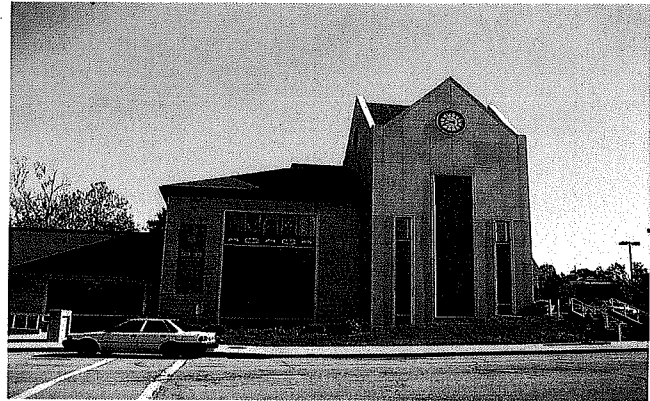
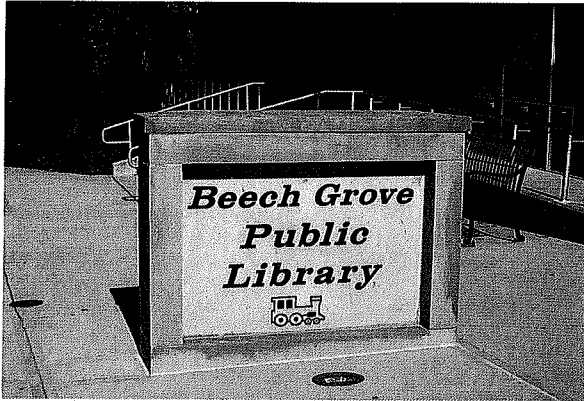
Thank you.

Sincerely,


Diane L. Burns
Library Director

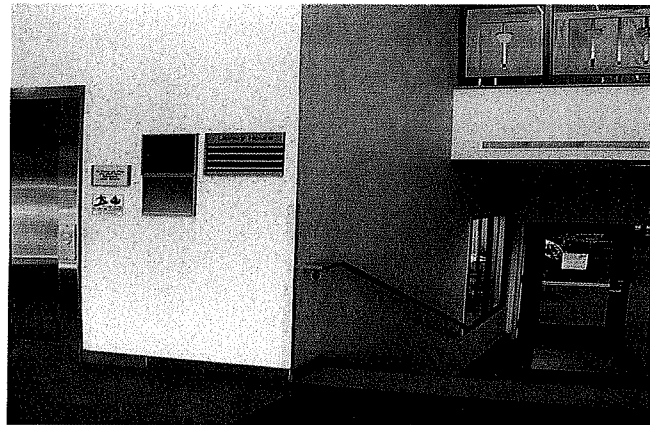
1102 MAIN ST
BEECH GROVE
INDIANA 46107
(317) 788-4203

Introducing the Beech Grove Public Library



"Welcome to Beech Grove Public Library" is the friendly message that greets every visitor who enters through our east parking lot doors.

The entryway opens up to spacious seating for our Dining Car Café, open Monday through Thursday 11am to 6:30pm, and Friday & Saturday 11am to 3pm.



There is also easy access to our east elevator for our handicapped patrons use.



Seating offers an unobstructed view of Beech Grove's bustling Main Street as well as wireless internet service.

During special events such as a guest author speaking or one of our famous "teas", the beautiful German doors (seen right) can be opened up for additional seating in the reference area.



Our Dining Car Café is small but mighty! Stop in for a light snack or freshly baked dessert, a hot cup of coffee, or a complete hot meal.

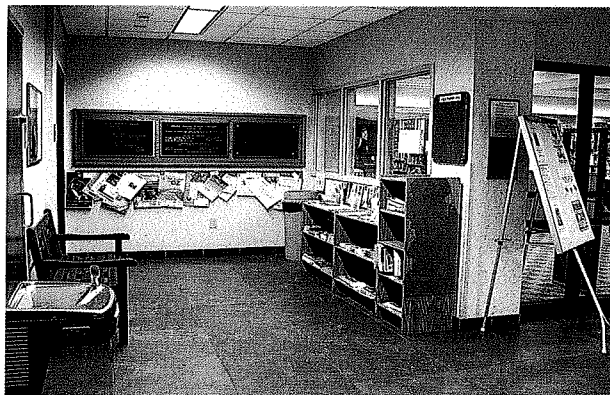
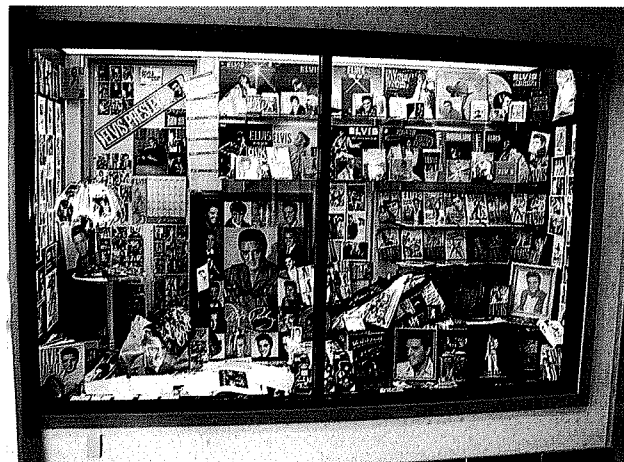
Take out is available, as well as catering for your next event.



Browse through our quaint little gift shop for a unique gift for that special someone. The Crossing Gift Shop features new and gently used gift items, as well as office supplies, books & movies, and our best seller...candy!

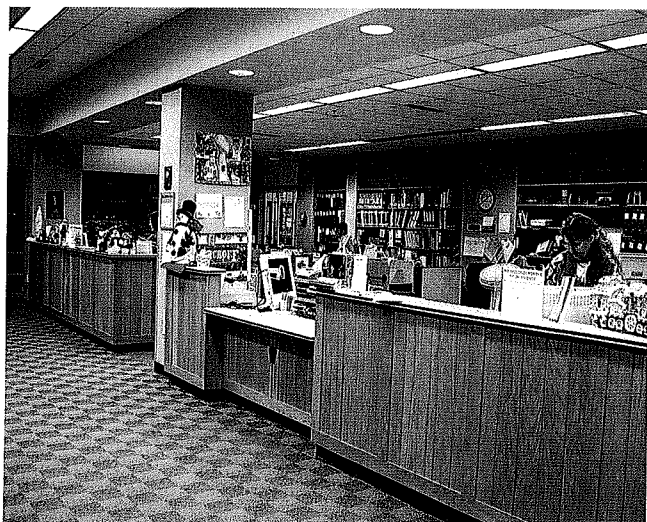
As you pass the Crossing, you enter our main lobby area and our south Main Street entrance.

This is the home of our ever popular Display Case. Here our patrons, businesses, and community groups can display their information or collections for the public to view.



The library has a public information center where visitors can utilize our message boards or post a notice themselves. Check here for info on upcoming activities and events here at the Beech Grove Public Library, too.

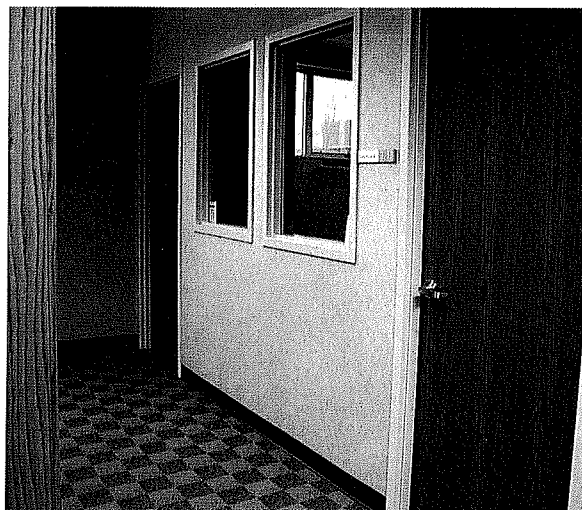
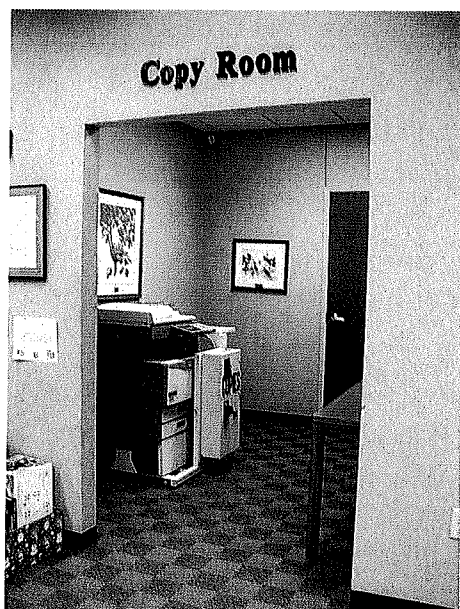
This is also where you will find one of our two sets of public restrooms with handicapped access as well as our second public elevator and stairs to the lower level.



As you leave the lobby you will find the circulation desk to your right and our friendly and knowledgeable staff ready to assist you.

We have OPAC stations set up throughout the building for our patrons use and clear signage in each department.

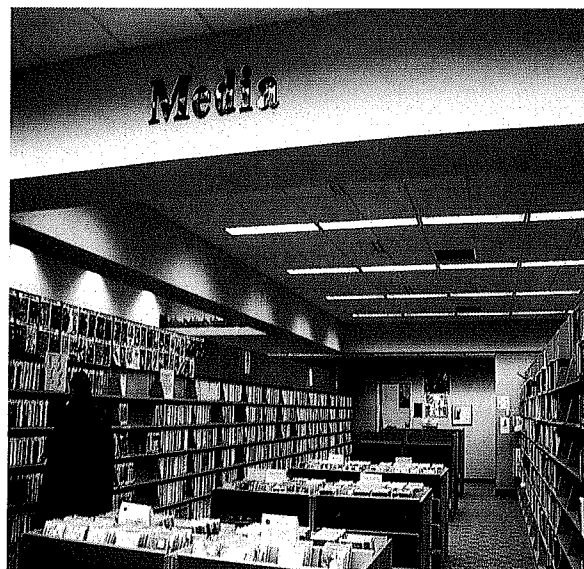
The library offers a public copy machine with table space for folding, cutting, or stapling.



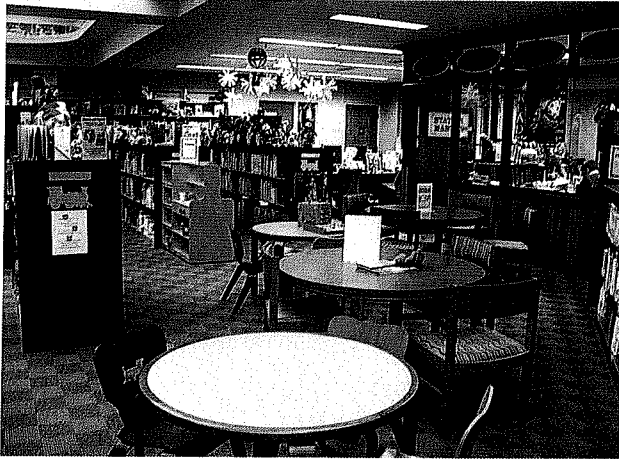
We offer two private study rooms.

Beech Grove Library's Media department boasts newer movies in DVD format as well as older titles in VHS. There is a large collection of audio books on both tape and CD, music CD's, and even a newer collection of Playaways are now available!

These items are all processed in our Media office which is equipped with a projector and speakers for public movie viewing and a resurfacing machine for repairing problem CD's and DVD's.



The Children's Department



Play at the kitchen set, with building blocks, or work puzzles and read books at the children's size tables

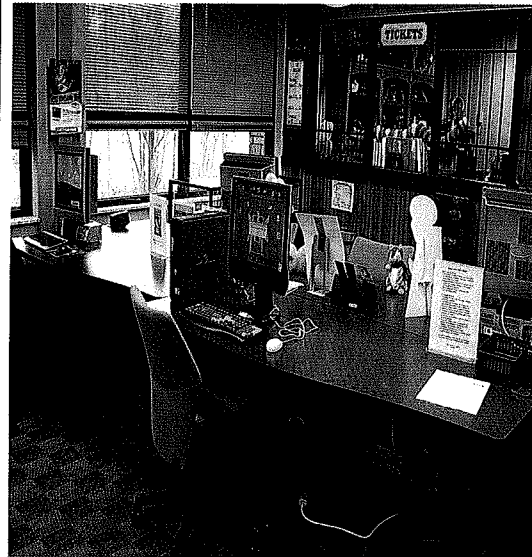


A peek into the craft room!



There are two trains that travel around the top of the entire Children's Department! Choo Choo!

The Beech Grove Library offers four public access children's internet stations. (right)



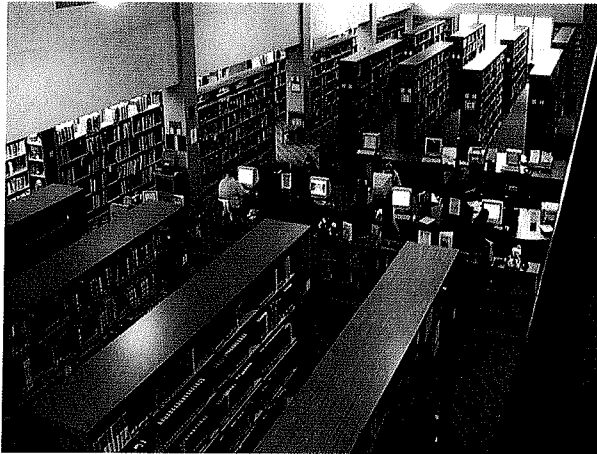
The big red caboose is one of our most popular spots inside the library!

Take a seat inside and read your favorite story or listen to a story read to you over our train phone.

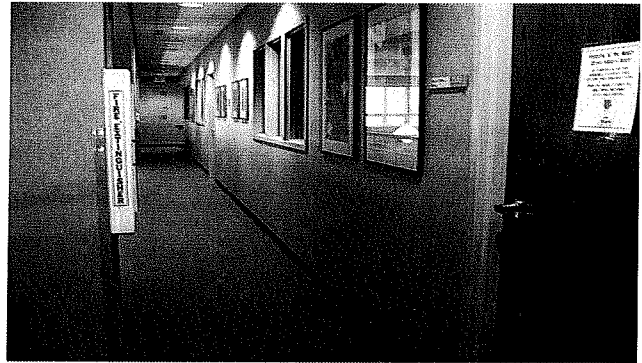
The caboose is a great photo opportunity!



Upstairs on the Mezzanine

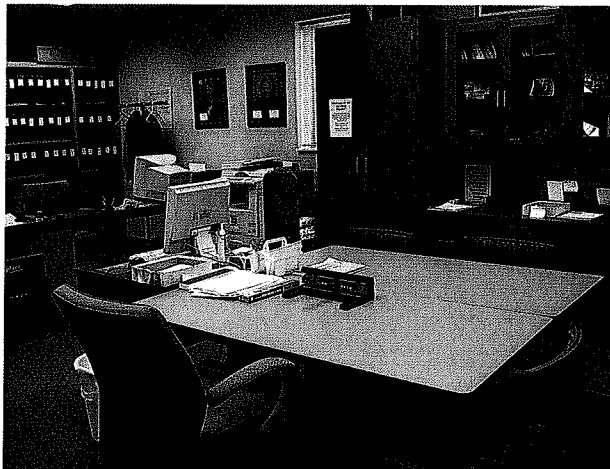
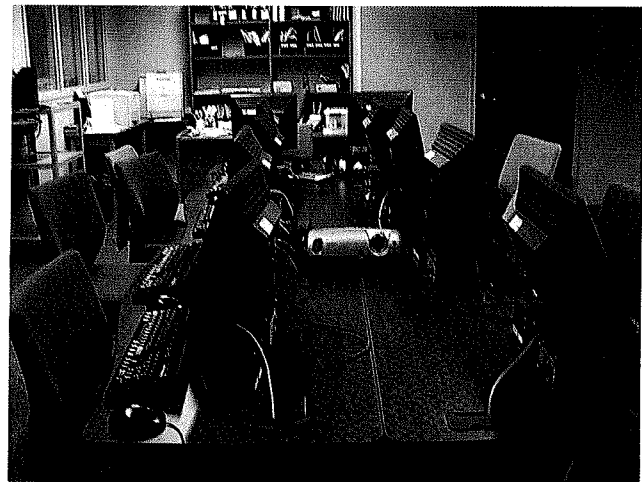


A view of the stacks and public access internet stations from the mezzanine. (left)



The long hall of the upper mezzanine houses our Beech Grove History Room, the technology room, board room, café kitchen, and an employee restroom. (upper right)

Our technology room is equipped with eight computers with internet access. We offer monthly computer classes in many different areas as well as genealogy research, Runescape club, and others. (right)



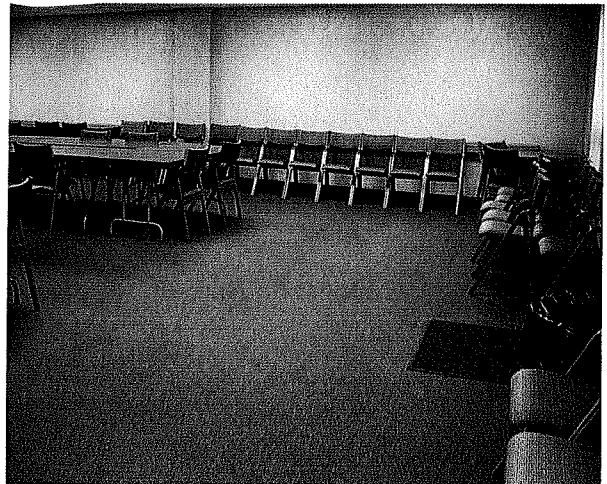
Beech Grove History Room



Board Meeting Room

Downstairs

Our lower level Community Room has a seating capacity of over 100. A movie can be viewed on the big screen or hold a large business meeting over lunch.



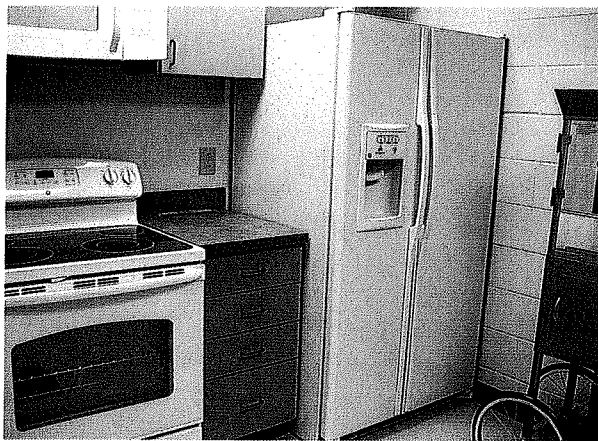
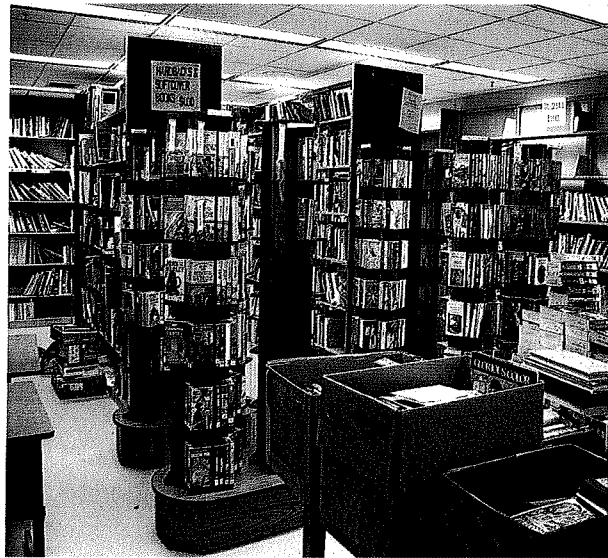
Our Wiseman Room is perfect for a smaller, more intimate meeting. We have a knitting group as well as a Bible study group who meet there on a regular basis. (left)



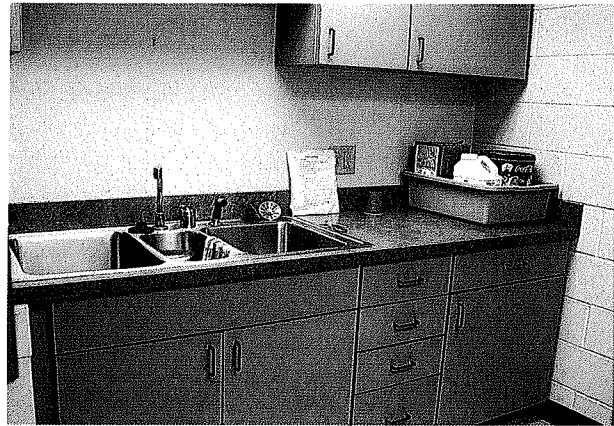
The lower level parking lot offers additional parking plus a separate entrance to the meeting rooms downstairs for the convenience of our visitors.



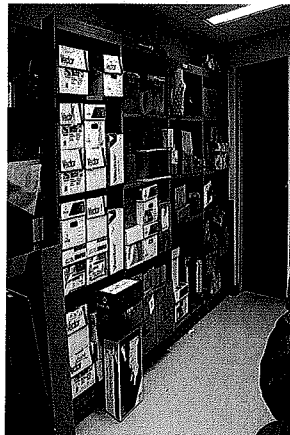
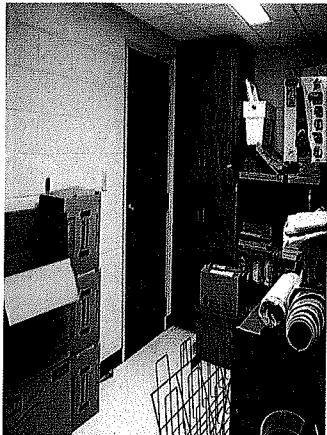
Also downstairs is our Book Sale Room.



One of the library's three kitchens is downstairs for ease in preparing food or drinks for events taking place in the Community room or the Wiseman room.
(left & below)



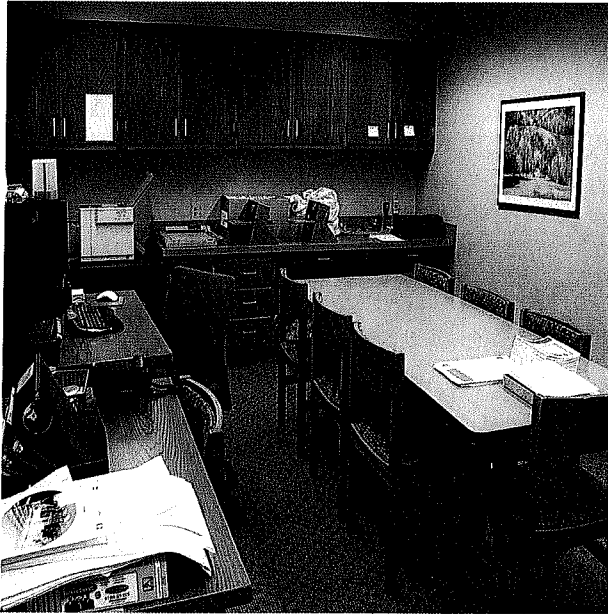
There are also rooms for use as a clinic and a dark room.



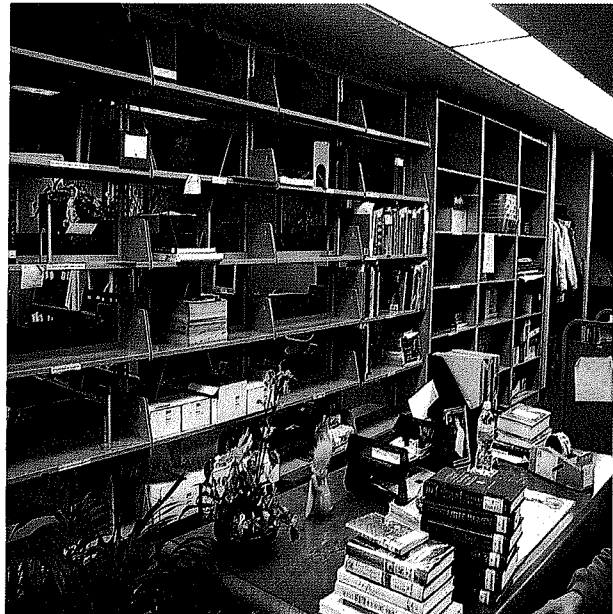
You will also find a second set of public restrooms, a laundry facility, the utility rooms, maintenance closets, and several storage areas.

Behind the Scenes

Out of the public eye, but an integral part of our daily operations.



Graphics Room with color copier, computer, laminators, binders, paper cutter, etc.

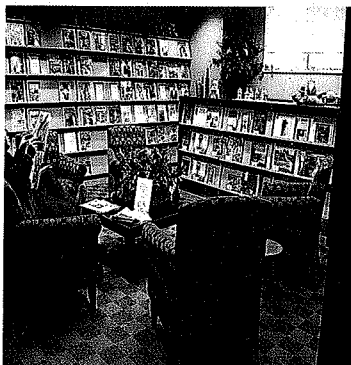


Office staff, employee computers, staff kitchen and break room, Director & Bookkeeper's offices, and the Receiving office are just some of the things you'll find behind our "employee only" doors.



Other places:

Teen Room (below)



Relax with a magazine or newspaper (left)



Reference Area (left)

Welcome to *the City of Beech Grove*

CELEBRATING THE PROGRESS AND THE PEOPLE OF OUR CITY

[City News](#) | [Events](#) | [City Court](#) | [Organizations](#) | [Business Directory](#)

(Area Code 317)
(Zip Code 46107)
Main Phone Number
788-4977

[Welcome](#)

[City News](#)

[Events and Meetings](#)

[Clubs and Organizations](#)

[Churches](#)
[Schools](#)

[Business Directory](#)

[Contact Us](#)

[The Better, Brighter,
Beech Grove Projects](#)

[On-Line Video Magazine](#)

[City Administration](#)
Mayors Office, ext. 5000
Clerks Office, ext. 5100

[Police Department](#)
Police Chief, ext. 6201
Police Station, ext. 6200

[Fire Department](#)
Fire Chief ext. 5004
Station 101, ext. 4300
Station 102, ext. 4400

[Communications Center](#)
Dispatch, ext. 6100

[Parks Department](#)
[Community Center](#)
ext. 5200

[Wellness Center](#)
ext. 5204

[Greenscape Commission](#)
ext. 5806

[BGTV Department](#)
Office, ext. 5300

[Public Works](#)
Street Dept. ext. 2000
Sanitation Dept. ext. 2100

[Senior Center](#)
Center, ext. 5400

[City Employment](#)
[Opportunities](#)

[Beech Grove Library](#)
Ph: 788-4203

[Employee email](#)

Beech Grove sends 49 boxes of items to troops overseas

Thanks to the outpouring of generosity from Beech Grove residents and corporate citizens, the community shipped the 2nd shipment of supplies to our Adopted Platoon on Friday, November 21.

The first shipment was 57 boxes of snacks, toiletries, books and clothing, to its adopted platoon of 52 courageous soldiers serving in Iraq this last spring.



[Info on Supporting Our Adopted Platoon](#) (pdf)



TREE CITY USA.
City of Beech Grove

[Christmas on Main Street](#)

BEECH GROVE LAUNCHES HORNETS' NET Beech Grove Goes Wireless

BEECH GROVE WINS COMMUNITY ACHIEVEMENT AWARD

All City Meetings have now been moved to the Community Center!

The City of Beech Grove is located in the southeast portion of Marion County and is part of the Greater Indianapolis Metropolitan area.

Beech Grove was incorporated in 1906, and is a city with nearly 15,000 residents who enjoy the benefits of a small town and the amenities of a large city.

The city celebrated its 100th birthday this last year.

A mayor, clerk-treasurer and seven city council people are elected every four years to govern the city. All municipal services such as police and fire protection, streets, parks, senior and community centers and other appropriate agencies are provided by the city administration.

Probably the best-known early resident was Sarah T. Bolton, famed poet and author of "Paddle Your Own Canoe." She came to Beech Grove some 100 years ago and wrote many of her poems in her home on South Seventeenth Avenue, which was known as Beech Bank. The city purchased the Bolton Farm and developed a city park there and named it after her which is now enjoyed by many area residents.

Beech Grove is mainly a residential community, although many large businesses are located here. Our local schools and the library are among the finest in the state.

We trust that the information contained on this website will be beneficial to you and we look forward to possibly hearing from you.

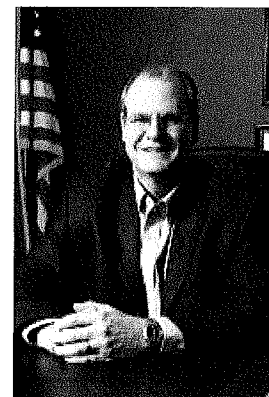
[For more history of our City](#)



[Watch the BG100 Video](#)

[City Demographics](#)

[City-data.com](#)



Mayor, Donald "Joe" Wright



City Projects

BETTER. BRIGHTER. BEECH GROVE.

www.BetterBrighterBeechGrove.com

Our local organizations to assist you in time of need.

St. Francis Hospital
Switchboard: 787-3311



Severe Weather
Garden Calendar
For Your Lawn
For Your Garden

Beech Grove, IN
Get the 10 day forecast

24°F
Cloudy

Feels Like: 17°F
Humidity: 76%
Wind: W at 6 mph
Enter city/zip

Will it Snow on Christmas ?

NOTICE TO TAXPAYERS OF BUDGET ESTIMATES AND TAX LEVIES

In the matter of determining the tax rates for certain purposes by the Library Board of BEECH GROVE Library, MARION County, Indiana. Notice is hereby given to taxpayers of BEECH GROVE Library, that the proper officers of said Library will conduct a public hearing at BEECH GROVE PUBLIC LIBRARY on the 2009 budget at 5:00 p.m./p.m. on AUGUST 28, 2008. Following this meeting, any ten or more taxpayers may object to a budget, tax rate or tax levy by filing an objecting petition with the proper officers of the political subdivision, within seven days after the hearing. The objecting petition must identify the provisions of the budget, tax rate or tax levy that taxpayers object to. If a petition is filed, the political subdivision shall adopt with its budget a finding concerning the objections filed and testimony presented. Following this aforementioned hearing, the Library Board will meet at Beech Grove Public Library on September 11 2008, at 7:00 pm a.m./p.m. to adopt the following budget:

Net Assessed Valuation 451,904,300

BUDGET ESTIMATE AND TAX LEVIES

1 Fund Name	2 Budget Estimate	3 Maximum Estimated Funds to be raised (Including appeals and levies exempt from maximum levy limitations)	4 Excessive Levy Appeals (Included in Column 3)	5 Current Tax Levy
Library Operating Fund	904,504	822,752	0	776,200
Library Improve. Reserve Fund	90,250	0	XXXXXXXXXX	0
Bond & Interest Redem. Fund	351,000	372,349	XXXXXXXXXX	321,397
Capital Projects Fund			XXXXXXXXXX	
Lease Rental			XXXXXXXXXX	
_____ Fund			XXXXXXXXXX	
_____ Fund			XXXXXXXXXX	
_____ Fund			XXXXXXXXXX	
Totals	1345754.00	1195101.00		1097597.00

The 2009 estimated maximum levy limitation for this unit is 822,752
 The Property Tax Replacement Credit used to reduce the rate for this unit is 0

Taxpayers appearing at the hearing shall have an opportunity to be heard. Pursuant to IC 6-1.1-17-13, after the tax levies have been determined, fixed by the appropriate governing body, and the tax rates published by the County Auditor, then ten (10) or more taxpayers or one (1) taxpayer that owns property that represents at least ten percent (10%) of the taxable assessed valuation in the political subdivision may initiate an appeal from the county board of tax adjustment's action on a political subdivision's budget by filing a statement of their objections with the County Auditor. The statement must be filed not later than ten (10) days after the publication of the notice. The statement shall specifically identify the provisions of the budget and tax levy to which the taxpayers object. The County Auditor shall forward the statement, with the budget, to the Department of Local Government Finance.

[Signature]
 President, Library Board
R. Carl Fred
 Secretary of Library Board
[Signature]

Dated August 7, 2008

LIBRARY BUDGET ESTIMATE
 For The Calendar Year Ending December 31, 20⁰⁹
 Beech Grove Public Library
 Marion County

Prepare a separate estimate for each fund.

Fund OPERATING

1. Personal Services

Salary and Wages

- Salary of Librarian
- Salary of Reference/Tech.Serv. Librarian
- Salary of Children's Librarian
- Salary of Office Manager/Bookkeeper
- Salary of Circulation Supervisor
- Wages of Hourly Employees #1
- Salary of Marketing Manager

Wages of Janitors

Employee Benefits

- Employer's Share-F.I.C.A.
- Unemployment Compensation
- Employer's Contribution - P.E.R.F.
- Employer's Contribution - Group Insurance
- Sick Pay
- Other Employee Benefits

Other Personal Services

- Blank
- Blank

Total Personal Services

2. Supplies

Office Supplies

- Official Records
- Stationery and Printing
- Other Office Supplies

Operating Supplies

- Cleaning and Sanitation Supplies
- Fuel, Oil and Lubricants
- Other Operating Supplies

Repair and Maintenance Supplies

- Building Materials and Supplies
- Paint and Painting Supplies
- Repair Parts

Other Repair and Maintenance Supplies

Other Supplies

- Blank
- Blank

Total Supplies

3. Other Services and Charges

Professional Services

- Consulting Services
- Engineering and Architectural Services
- Legal Services
- Other Professional Services

Communication and Transportation

- Telephone and Telegraph
- Postage
- Traveling Expenses
- Professional Meetings
- Freight and Express
- T Line

- Blank
- Blank

Printing and Advertising

- Advertising and Publication of Notices
- Printing, Other Than Office Supplies

Insurance

- Official Bonds
- Other Insurance

Items	Fund Estimate	Approved
60523.	60523.	
42521.		
33744.		
34742.		
0.		
157187.		
21077.	289271.	
39500.	39500.	
32000.		
1500.		
14000.		
82000.		
16400.	145900.	
	535194.	
1000.		
5000.		
8000.	14000.	
4000.		
9500.	13500.	
1300.		
2800.	4100.	
	31600.	
4000.		
2500.		
3000.	9500.	
5000.		
4000.		
1500.		
3000.		
9000.		
	22500.	
1000.		
	1000.	
300.		
30500.	30800.	

3. Other Services and Charges (continued)

Items	Fund Estimate	Approved
Utility Services		
Gas	17000.	
Electricity	28000.	
Water	1000.	
Waste Disposal Services	1000.	
Repairs and Maintenance	47000.	
Building and Structures		
Equipment	1000.	
Rentals	27000.	
Real Estate		
Equipment	100.	
Debt Services		
Payment of Bonds		
Interest on Bonds		
Other		
Dues	1000.	
Interest on Temporary Loans		
Taxes and Assessments	15000.	
Transfer to Library Improvement Reserve Funds	1000.	
Blank	10000.	
Blank		
Blank		
Total of Services and Charges	27000.	
	165900.	
4. Capital Outlays		
Land		
Buildings		
Improvements Other Than Building		
Furniture and Equipment	2000.	
Other Capital Outlays	35000.	
Books	110810.	
Periodicals and Newspapers	7000.	
Nonprinted Materials (Microforms and Audio-visuals)	17000.	
Total Capital Outlays	171810.	
Fund Total	904504.	

We hereby certify that the foregoing is true and fair estimate of the necessary expense of the Beech Grove Public Library for the calendar year 2009 for the purpose herein specified.

Date September 14, 2008

R. Carl Fred
William Ferguson
Imothy Shovelton
Joseph W. Pich
Maryanne

Members of Library Board

Frank B. Dentist
Bradford

Members of Library Board

ID YEAR CO TYPE KEY

BUDGET ESTIMATE - FINANCIAL STATEMENT - PROPOSED TAX RATE

TAXING UNIT Beech Grove Public Library

COUNTY Marion

FUND General

NET ASSESSED VALUATION 451,904,300

(This form is to be prepared for each fund that requires either a tax rate or an appropriation)
 (NOT TO BE PUBLISHED)

FUNDS REQUIRED FOR EXPENSES TO DECEMBER 31st OF INCOMING YEAR	AMOUNT USED TO COMPUTE PUBLISHED BUDGET	APPROPRIATING BODY	TAX ADJUSTMENT BOARD	CONTROL BOARD AND DLGF FINAL ACTION
1. Total budget estimate for incoming year	904,504			
2. Necessary expenditures, July 1 to December 31 of present year, to be made from appropriation unexpended	520,327			
3. Additional appropriation necessary to be made July 1 to December 31 of present year	0			
4. Outstanding temporary loans				
a. To be paid not included in lines 2 or 3	50,000			
b. Not repaid by December 31 of present year	419,053			
5. TOTAL FUNDS required (add lines 1,2,3,4a and 4b)	1,893,884			
FUNDS ON HAND TO BE RECEIVED FROM SOURCES OTHER THAN PROPOSED TAX LEVY				
6. Actual cash balance, June 30 of present year (including cash investments)	140,709			
7. Taxes to be collected, present year (December settlement)	667,667			
8. Miscellaneous revenue to be received July 1 of present year to December 31 of incoming year (Schedule on File)				
a. Total Column A Budget Form 2	247,866			
b. Total Column B Budget Form 2	60,097			
9. TOTAL FUNDS (Add lines 6,7,8a and 8b)	1,116,239			
10. Net amount to be raised for expenses to December 31 of incoming year (deduct line 9 from 5)	777,645			
11. Operating balance (not in excess of expense January 1 to June 30, less miscellaneous revenue for same period)	45,107			
12. Amount to be raised by tax levy	822,752			
13. Property Tax Replacement Credit from Local Option Tax	0			
14. NET AMOUNT TO BE RAISED BY TAX LEVY (deduct line 13 from line 12)	822,752			
15. Levy Excess Fund applied to current budget	XXXXXXXXXX			
16. Net amount to be raised	822,752			
17. Net Tax Rate on each one hundred dollars of taxable property	0.1821			

LIBRARY BUDGET ESTIMATE
 For The Calendar Year Ending December 31, 20 09
 Beech Grove Public Library
 Marion County

Prepare a separate estimate for each fund.

Fund	Debt Service	Items	Fund Estimate	Approved
1. Personal Services				
Salary and Wages				
Salary of Librarian				
Salary of Reference/Tech.Serv. Librarian				
Salary of Children's Librarian				
Salary of Office Manager/Bookkeeper				
Salary of Circulation Supervisor				
Wages of Hourly Employees				
Wages of Janitors				
Employee Benefits				
Employer's Share-F.I.C.A.				
Unemployment Compensation				
Employer's Contribution - P.E.R.F.				
Employer's Contribution - Group Insurance				
Sick Pay				
Other Employee Benefits				
Other Personal Services				
Blank				
Blank				
	Total Personal Services			
2. Supplies				
Office Supplies				
Official Records				
Stationery and Printing				
Other Office Supplies				
Operating Supplies				
Cleaning and Sanitation Supplies				
Fuel, Oil and Lubricants				
Other Operating Supplies				
Repair and Maintenance Supplies				
Building Materials and Supplies				
Paint and Painting Supplies				
Repair Parts				
Other Repair and Maintenance Supplies				
Other Supplies				
Blank				
Blank				
	Total Supplies			
3. Other Services and Charges				
Professional Services				
Consulting Services				
Engineering and Architectural Services				
Legal Services				
Other Professional Services				
Communication and Transportation				
Telephone and Telegraph				
Postage				
Traveling Expenses				
Professional Meetings				
Freight and Express				
T Line				
Blank				
Blank				
Printing and Advertising				
Advertising and Publication of Notices				
Printing, Other Than Office Supplies				
Insurance				
Official Bonds				
Other Insurance				

ID YEAR CO TYPE KEY

Beech Grove LIBRARY Marlon COUNTY, INDIANA

ESTIMATE OF MISCELLANEOUS REVENUES
 FROM SOURCES OTHER THAN GENERAL PROPERTY TAXES
 FOR USE IN PREPARATION OF ESTIMATE OF FUNDS TO BE RAISED, YEAR 2009

Debt Service FUND SOURCE OF RECEIPTS	ESTIMATED AMOUNTS TO BE RECEIVED			
	-A- June 30, 2008 to December 31, 2008	-X- Department of Local Government Finance	-B- January 1, 2009 to December 31, 2009	-X- Department of Local Government Finance
SPECIAL TAXES:				
0201 Financial Institutions Tax	3,800		3,800	
0202 License Excise Tax	17,000		17,000	
0203 CAGIT Certified Shares				
0204 CAGIT Property Tax Replacement Credit			XXXXXXXXXXXX	
0212 County Option Income Tax (COIT)				
0217 CVET Commercial Vehicle Excise Tax	1,350		1,350	
OTHER REVENUE:				
1515 State Distribution				
4100 Fines and Fees				
2700 Photocopy Fees				
6000 Income From Trusts				
6100 Interest on Investments				
2716 County Contractual Library				
1418 Library Service Authority				
2705 Township Contracts (Lists)				
6400 Gifts and Bequests				
1419 Operating Grants (Specify Source)				
1420 Capital Grants (Specify Source)				
5206 Transfer of Funds				
5207 Transfer From Operating Fund (For LIRF Only)				
6200 Rental of Property				
5101 Sale of Property				
9999 Total Columns A and B	22,150		22,150	
	Line 8A		Line 8B	

NOTE: Column A is for the period from July 1 to December 31 of the present year
 Column B is for the period from January 1 to December 31 of the incoming year
 Columns X are reserved for the Department of Local Government Finance

ID YEAR CO TYPE KEY

TAXING UNIT _____ COUNTY Marion
 FUND Debt Service NET ASSESSED VALUATION 451,904,300
 Beech Grove Public Library

BUDGET ESTIMATE - FINANCIAL STATEMENT - PROPOSED TAX RATE

(This form is to be prepared for each fund that requires either a tax rate or an appropriation)
 (NOT TO BE PUBLISHED)

FUNDS REQUIRED FOR EXPENSES TO DECEMBER 31st OF INCOMING YEAR	AMOUNT USED TO COMPUTE PUBLISHED BUDGET	APPROPRIATING BODY	TAX ADJUSTMENT BOARD	CONTROL BOARD AND DLGF FINAL ACTION
1. Total budget estimate for incoming year	351,000			
2. Necessary expenditures, July 1 to December 31 of present year, to be made from appropriation unexpended	173,000			
3. Additional appropriation necessary to be made July 1 to December 31 of present year	0			
4. Outstanding temporary loans				
a. To be paid not included in lines 2 or 3				
b. Not repaid by December 31 of present year	41,046			
5. TOTAL FUNDS required (add lines 1,2,3,4a and 4b)	565,046			
FUNDS ON HAND TO BE RECEIVED FROM SOURCES OTHER THAN PROPOSED TAX LEVY				
6. Actual cash balance, June 30 of present year (Including cash investments)	1,500			
7. Taxes to be collected, present year (December settlement)	321,397			
8. Miscellaneous revenue to be received July 1 of present year to December 31 of incoming year (Schedule on File)				
a. Total Column A Budget Form 2	22,150			
b. Total Column B Budget Form 2	22,150			
9. TOTAL FUNDS (Add lines 6,7,8a and 8b)	367,197			
10. Net amount to be raised for expenses to December 31 of incoming year (deduct line 9 from 5)	197,849			
11. Operating balance (not in excess of expense January 1 to June 30, less miscellaneous revenue for same period)	174,500			
12. Amount to be raised by tax levy	372,349			
13. Property Tax Replacement Credit from Local Option Tax	0			
14. NET AMOUNT TO BE RAISED BY TAX LEVY (deduct line 13 from line 12)	372,349			
15. Levy Excess Fund applied to current budget	XXXXXXXXXX			
16. Net amount to be raised	372,349			
17. Net Tax Rate on each one hundred dollars of taxable property	0.0824			

LIBRARY BUDGET ESTIMATE

For The Calendar Year Ending December 31, 2009

Beech Grove Public Library

Marion County

Prepare a separate estimate for each fund.		Items	Total Estimate	Approved
LIRF	FUND			
1	Personal Services			
	Salaries and Wages			
	Salary of Librarian			
	Salary of Assistants			
			
			
	Salary of Treasurer			
	Wages of Janitors			
	Employee Benefits			
	Employer's Share - F.I.C.A.			
	Unemployment Compensation			
	Employer's Contribution - P.E.R.F.			
	Employer's Contribution - Group Insurance			
	Sick Pay			
	Other Employee Benefits			
	Other Personal Services			
			
			
	Total Personal Services			
2.	Supplies			
	Office Supplies			
	Official Records			
	Stationery and Printing			
	Other Office Supplies			
	Operating Supplies			
	Cleaning and Sanitation Supplies			
	Fuel, Oil and Lubricants			
	Other Operating Supplies			
	Repair and Maintenance Supplies			
	Building Materials and Supplies			
	Paint and Painting Supplies			
	Repair Parts			
	Other Repair and Maintenance Supplies			
	Other Supplies			
			
			
	Total Supplies			
3.	Other Services and Charges			
	Professional Services			
	Consulting Services			
	Engineering and Architectural Services			
	Legal Services			
	Other Professional Services			
	Communication and Transportation			
	Telephone and Telegraph			
	Postage			
	Traveling Expense			
	Professional Meetings			
	Freight and Express			
			
			
	Printing and Advertising			
	Advertising and Publication of Notices			
	Printing, Other Than Office Supplies			
	Insurance			
	Official Bonds			
	Other Insurance			

ID YEAR CO TYPE KEY

Beech Grove LIBRARY Marion COUNTY, INDIANA

ESTIMATE OF MISCELLANEOUS REVENUES
 FROM SOURCES OTHER THAN GENERAL PROPERTY TAXES
 FOR USE IN PREPARATION OF ESTIMATE OF FUNDS TO BE RAISED, YEAR 2009

LIRF SOURCE OF RECEIPTS	FUND	ESTIMATED AMOUNTS TO BE RECEIVED			
		-A- June 30, 2008 to December 31, 2008	-X- Department of Local Government Finance	-B- January 1, 2009 to December 31, 2009	-C- Department of Local Government Finance
SPECIAL TAXES:					
0201	Financial Institutions Tax				
0202	License Excise Tax				
0203	CAGIT Certified Shares				
0204	CAGIT Property Tax Replacement Credit				
0212	County Option Income Tax (COIT)			XXXXXXXXXXXX	
0217	CVET Commercial Vehicle Excise Tax				
OTHER REVENUE:					
1515	State Distribution				
4100	Fines and Fees				
27	Photocopy Fees				
61	Income From Trusts				
6	Interest on Investments				
2	County Contractual Library				
1418	Library Service Authority				
2705	Township Contracts (Lists)				
6400	Gifts and Bequests				
1419	Operating Grants (Specify Source)				
1420	Capital Grants (Specify Source)				
5207	Transfer From Operating Fund (For LIRF Only)				
6	Rental of Property	10,000		10,000	
51	Sale of Property				
6500	Non-Identified Revenue	50,000			
9999	Total Columns A and B	60,000		10,000	
		Line 8A		Line 8B	

NOTE: Column A is for the period from July 1 to December 31 of the present year
 Column B is for the period from January 1 to December 31 of the incoming year
 Columns X are reserved for the Department of Local Government Finance

BUDGET SUBMISSION LETTER AND CERTIFICATE

TO AUDITOR OF Marion COUNTY, INDIANA:

The undersigned herewith submits two copies of the budget adopted by the Library Board of Beech Grove Public Library, Beech Grove, Marion County, Indiana, for the year ending December 31, 2009 for filing and presentation to the County Board of Tax Adjustment.

Also submitted are copies of the Proof of Publication of published notice to taxpayers (two copies from each newspaper.)

M. Murphy
President of Library Board

R. Carol Fred
Secretary of Library Board

Thaddeus Dumbis/Bredwell
Treasurer of Library Board

CERTIFICATE AND RESOLUTION OF TAX RATES

The undersigned hereby certifies that the following resolution levying taxes and fixing the rate of taxation for the purpose of raising revenue to meet the necessary expense for the calendar year ending December 31, 2009, has been adopted.

Be it resolved by the Library Board of Marion Beech Grove Public Library, Marion County, Indiana, that:

There shall be levied upon each one hundred dollars of assessed valuation of taxable property in said library taxing district for the fiscal year 2008 to be collected in the year 2009 the following:

- For the LIBRARY General FUND, the rate of 0.1821 dollars per one hundred dollars of taxable property.
- For the LIBRARY Debt Service FUND, the rate of 0.0824 dollars per one hundred dollars of taxable property.
- For the LIBRARY LIRF FUND, the rate of 0.0000 dollars per one hundred dollars of taxable property.
- For the LIBRARY _____ FUND, the rate of _____ dollars per one hundred dollars of taxable property.
- For the LIBRARY _____ FUND, the rate of _____ dollars per one hundred dollars of taxable property.
- For the LIBRARY _____ FUND, the rate of _____ dollars per one hundred dollars of taxable property.
- For the LIBRARY _____ FUND, the rate of _____ dollars per one hundred dollars of taxable property.

Adopted, certified and respectfully submitted, this September 11, 2008

A YE

NAY

R. Carol Fred

William Lawrence

Isaiah J. Swartz

M. Murphy

Thaddeus Dumbis/Bredwell

Members of Library Board

Members of Library Board

County Fiscal body nonbinding recommendation, 6-1.1-17-3.5 for the 2009 budget year. This has not been received.

Multiple copies of our 2009 advertised and adopted budget were delivered to the Beech Grove Clerk Treasurer for the Beech Grove City Council members for review. We have not been notified of the outcome or recommendations (if any) from that review. It was our understanding that they were waiting for more financial information possibly in December.

All of our service area is inside the boundaries of the city of Beech Grove. Some more recently annexed areas that are in Beech Grove are not in the Beech Grove school or library district. We have asked IMCPL to allow that area to be served by our library but they declined as they wished to keep the library and school districts the same. The school districts have also not changed.

Reciprocal Borrowing: Within the boundaries of Marion County we have always been a participant in any and all agreement to better serve the citizens of Beech Grove and Marion County. This agreement allows Marion County residents who live outside of Beech Grove be able to apply for and receive a free card to use any materials at the Beech Grove Public Library. The reverse is true for Beech Grove residents. This is a great benefit to allow residents to be served by a library as they move around the county from home to work to the homes of family members, etc.

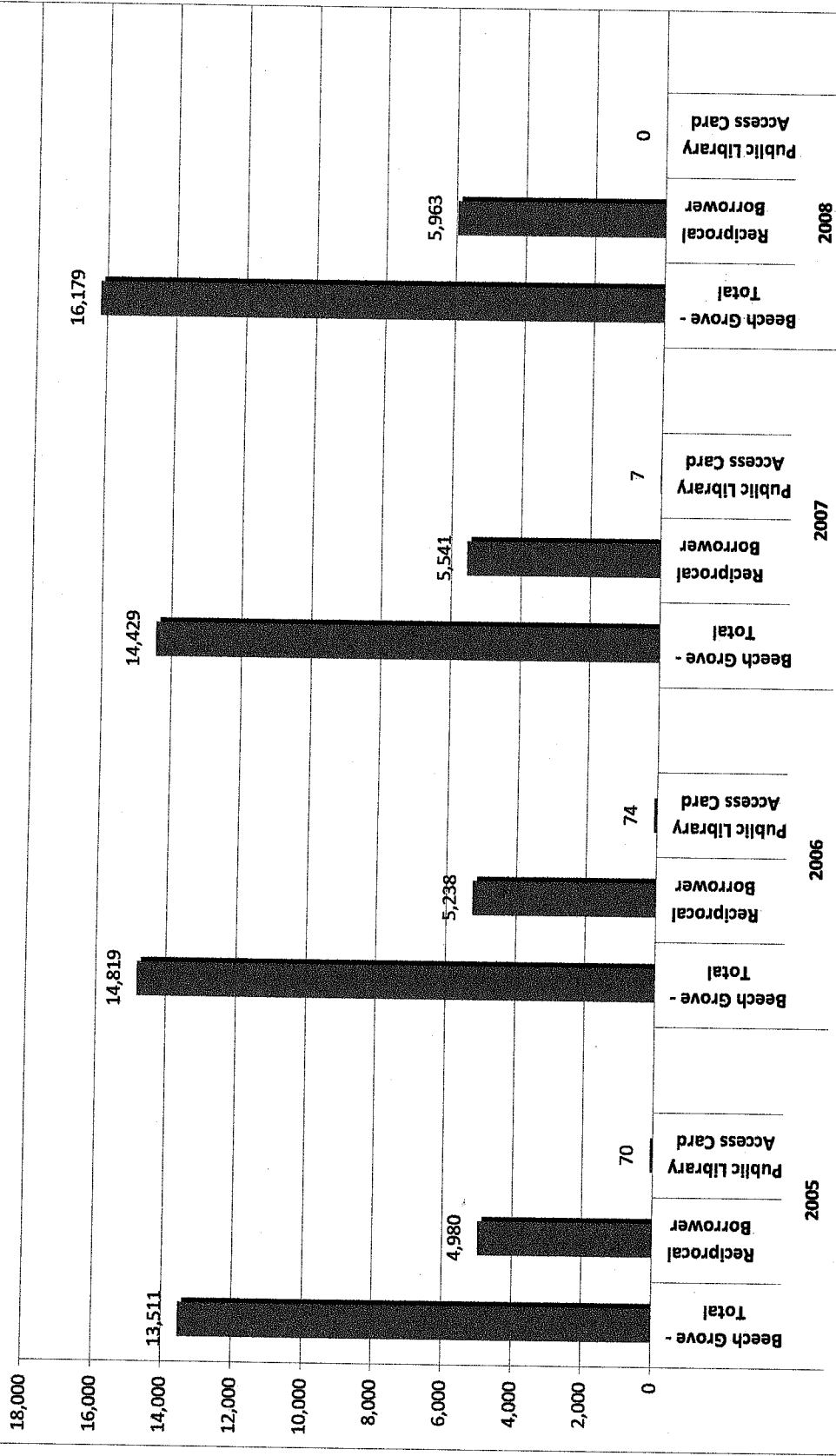
Summer reading: For the past four years we have participated in the excellent IMCPL summer reading program. This is a benefit to the residents as they read at home, school or with babysitters in Marion County including but limited to Beech Grove. Donors of gifts and prizes benefit as children in Beech Grove are included. We have had around 1,000 children in Beech Grove participate making us one of the most used sites in the county.

**Beech Grove Public Library
Patron Analysis
2005 to 2008**

Year	Patron Type	Patron Total
2005	Beech Grove - Total	13,511
	Reciprocal Borrower	4,980
	Public Library Access Card	70
2006	Beech Grove - Total	14,819
	Reciprocal Borrower	5,238
	Public Library Access Card	74
2007	Beech Grove - Total	14,429
	Reciprocal Borrower	5,541
	Public Library Access Card	7
2008	Beech Grove - Total	16,179
	Reciprocal Borrower	5,963
	Public Library Access Card	N/A

Beech Grove Public Library
 Patron Analysis
 2005 to 2008

BGPL Patron Analysis 2005 - 2008

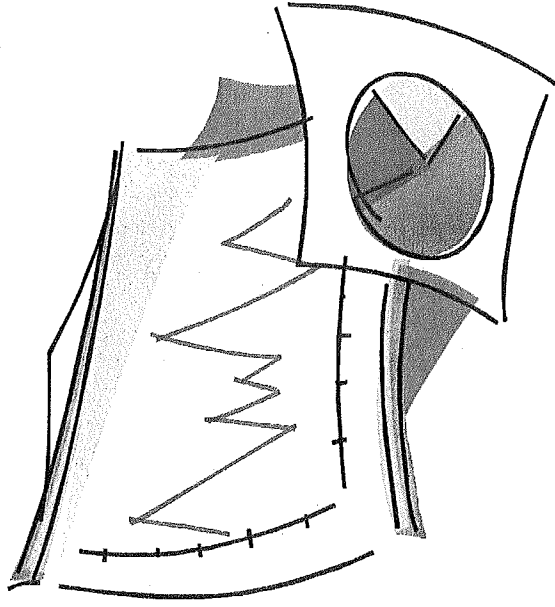


Population of Beech Grove

The 2000 census listed the population at slightly less than 15,000. A very large percentage of residents do have library cards and use the library. We have had no special census so we assume the number is fairly stable as we are a land-locked area surrounded by Indianapolis. I spoke with the city Clerk Treasurer and she had no additional information on population count or projections.

Beech Grove Public Library

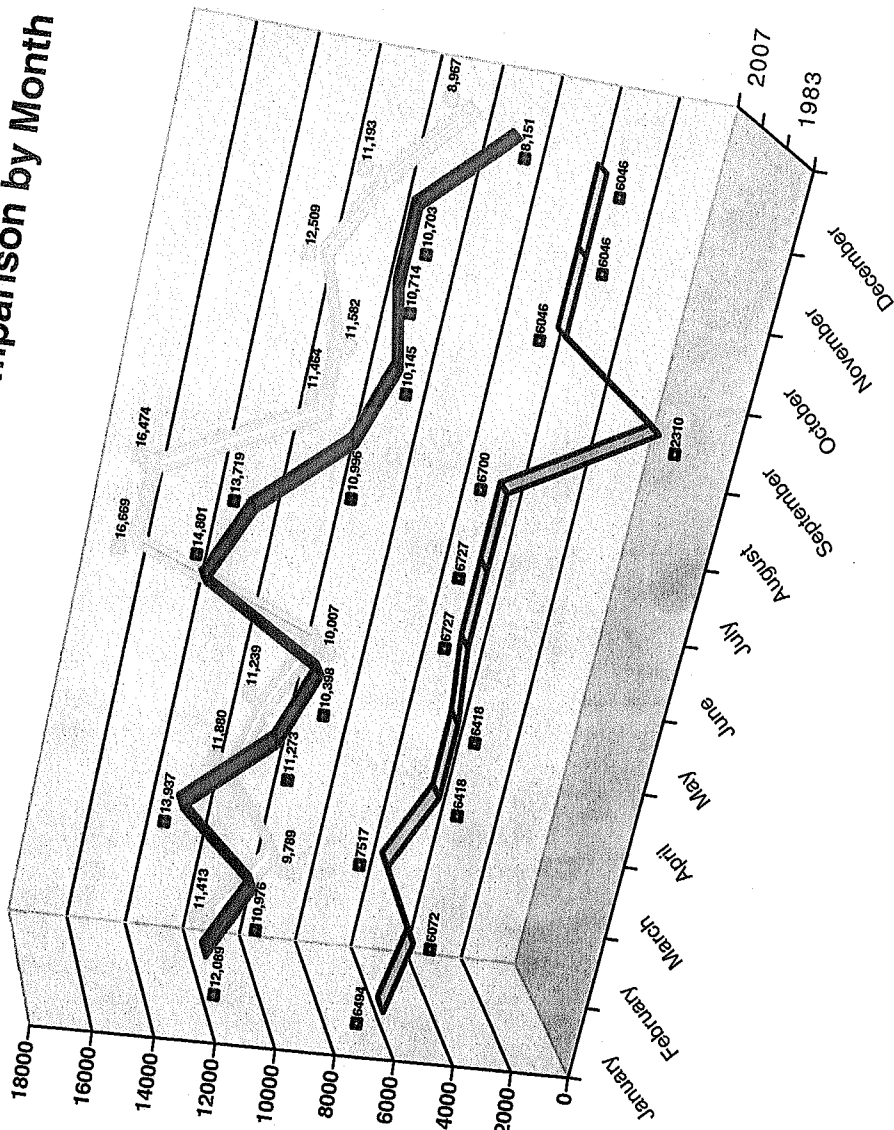
2007 Circulation Report



- ☐ Circulation Totals Comparison by Month
- ☐ Circulation Totals Comparison by Category
- ☐ Monthly Circulation Totals by Category
- ☐ Circulation Totals by Category
- ☐ Adult Circulation by Category
- ☐ Children's Circulation by Category
- ☐ Media Circulation by Category
- ☐ Audio Material Circulation by Type
- ☐ Other Circulation by Category
- ☐ Total Circulation by Year

Prepared by Amber Kent Finkelstein, Circulation Desk Supervisor

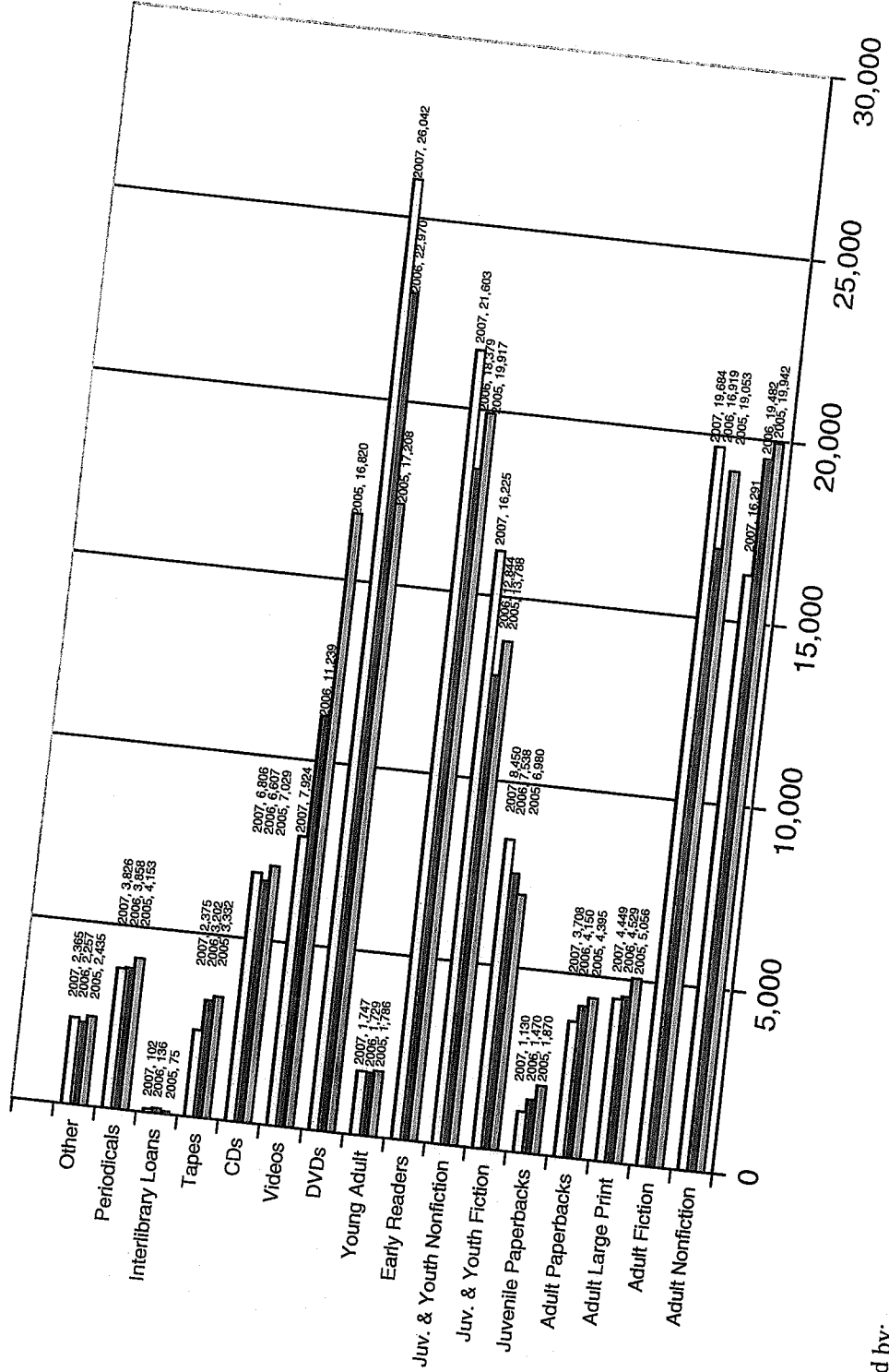
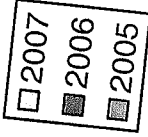
2007 Circulation Totals Comparison by Month



1983 2006 2007

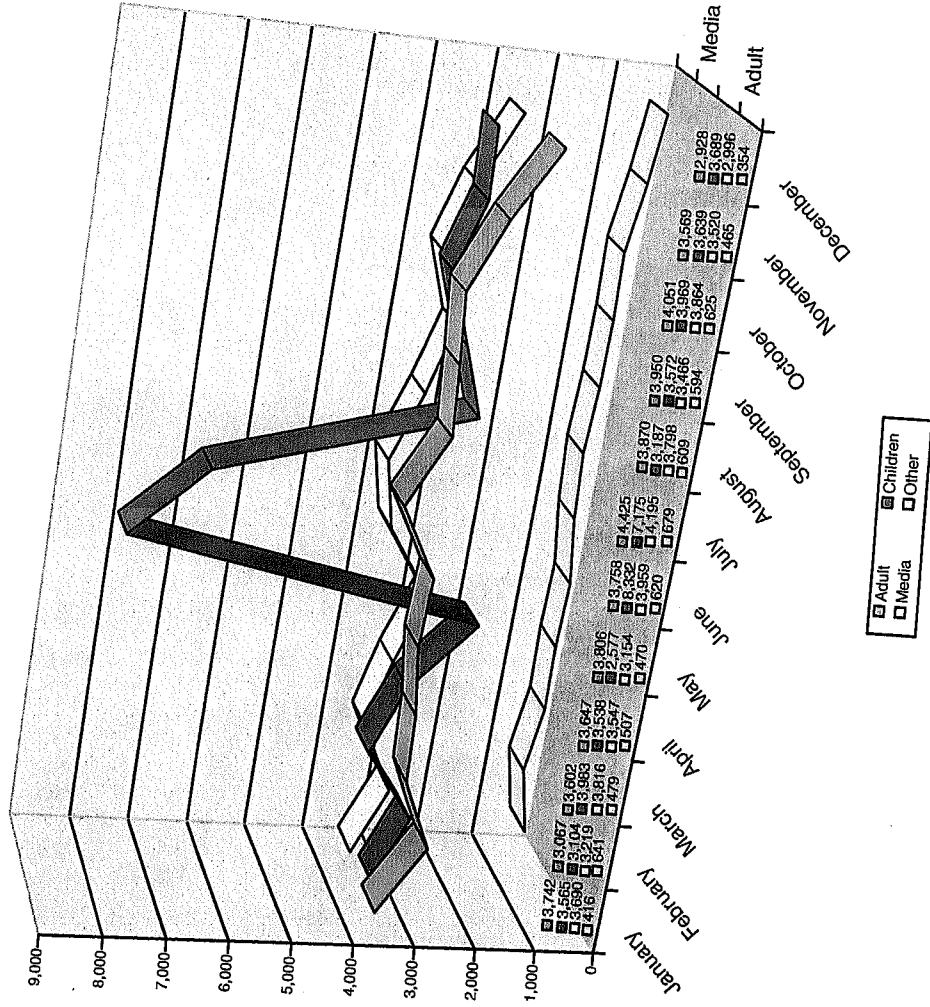
Prepared by:
Amber Kent Finkelstein,
Circulation Desk Supervisor

2007 Circulation Totals Comparison by Category



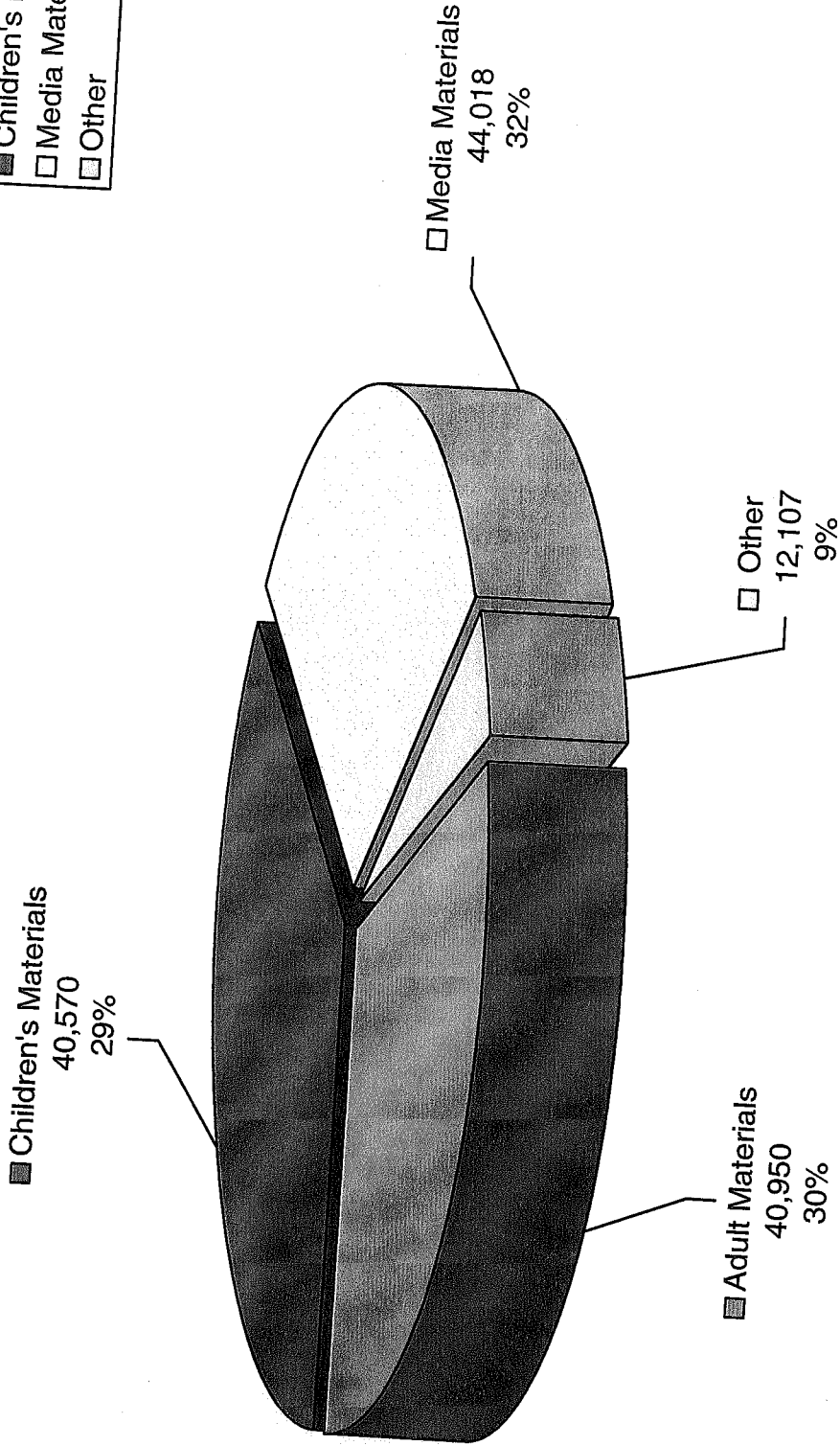
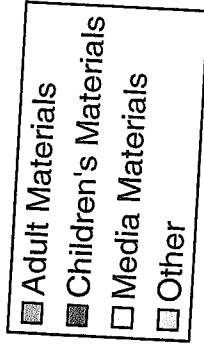
Prepared by:
 Amber Kent Finkelstein,
 Circulation Desk Supervisor

2007 Monthly Circulation Totals by Category



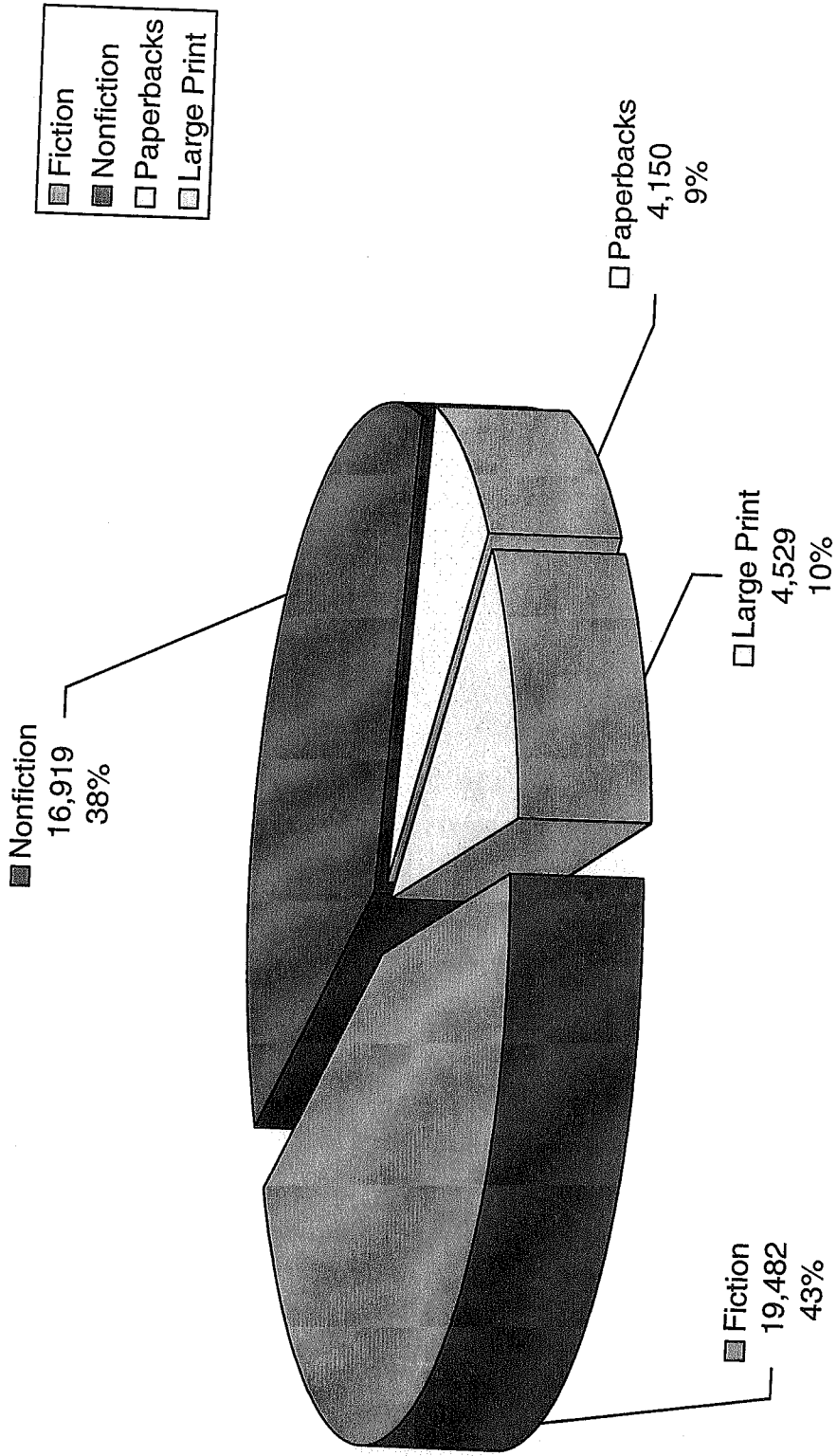
Prepared by:
 Amber Kent Finkelstein,
 Circulation Desk Supervisor

2007 Circulation Totals by Category



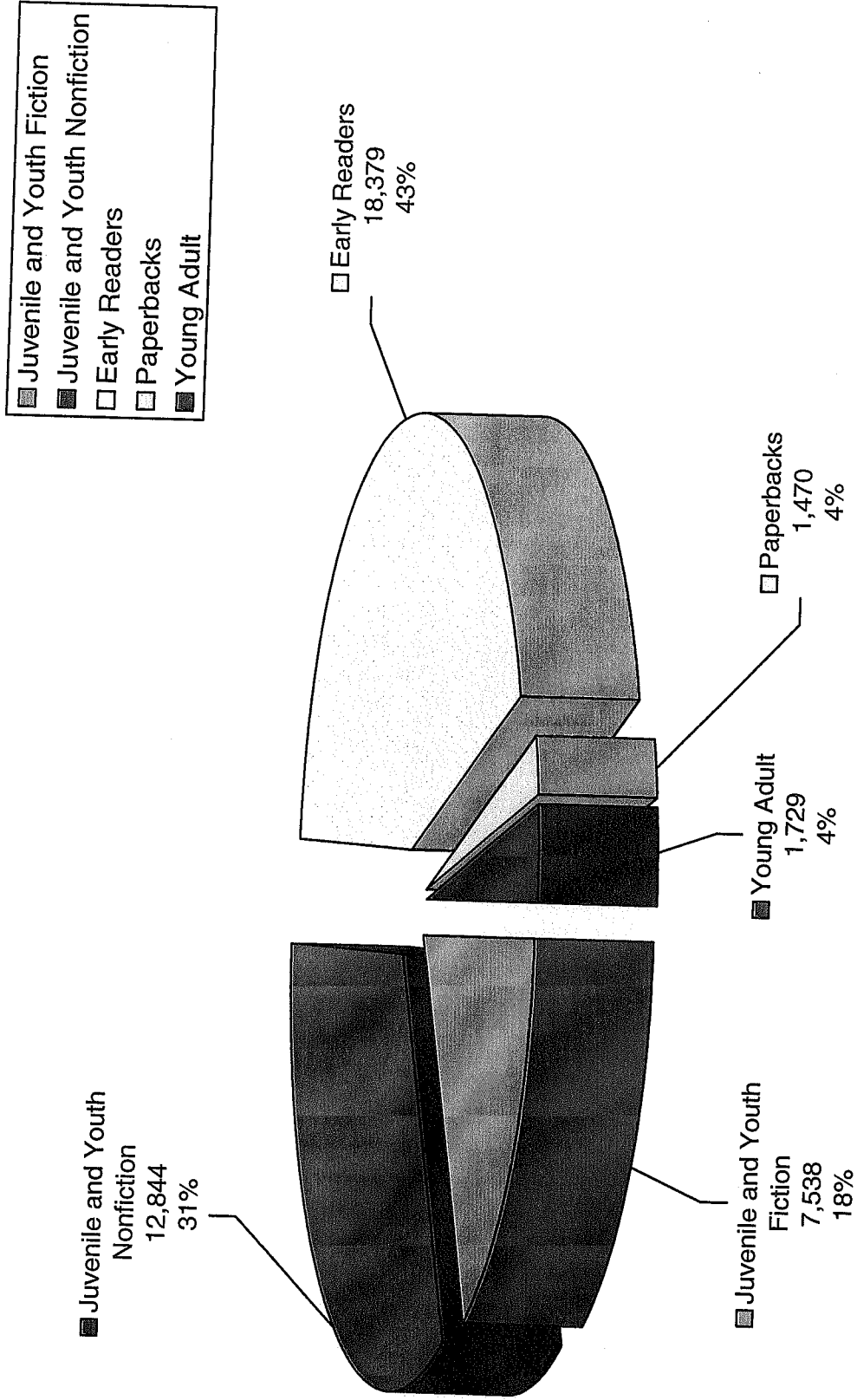
Prepared by:
Amber Kent Finkelstein,
Circulation Desk Supervisor

2007 Adult Circulation by Category



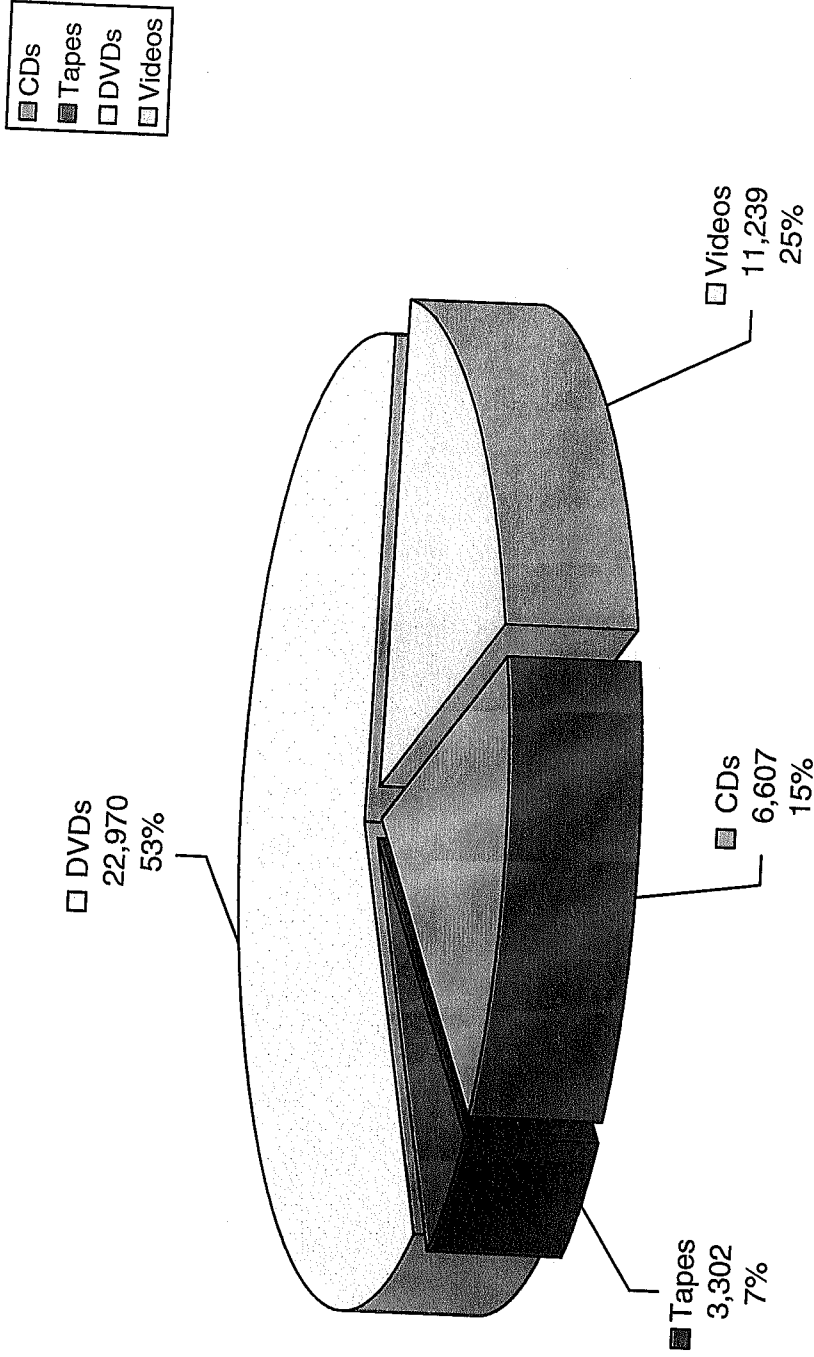
Prepared by:
Amber Kent Finkelstein,
Circulation Desk Supervisor

2007 Children's Circulation by Category

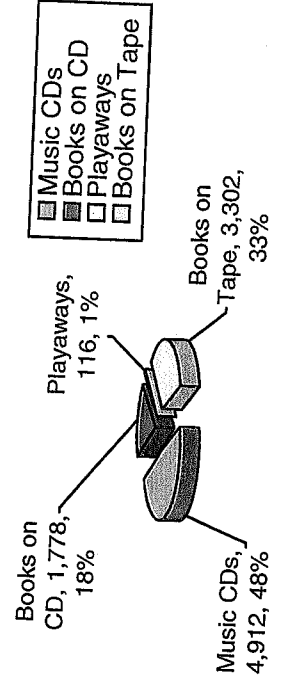


Prepared by:
Amber Kent Finkelstein,
Circulation Desk Supervisor

2007 Media Circulation by Category

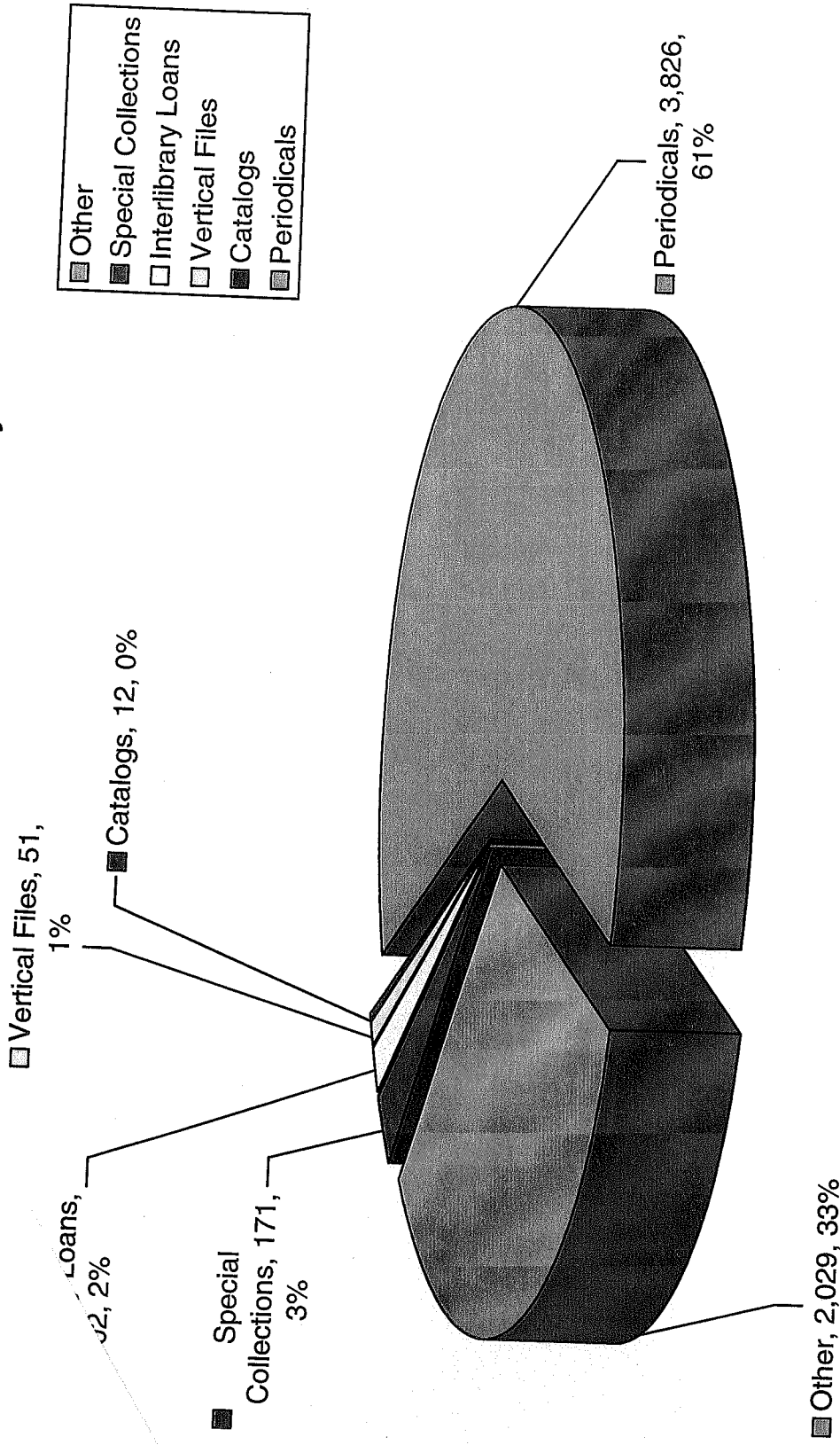


Audio Material Circulation by Category



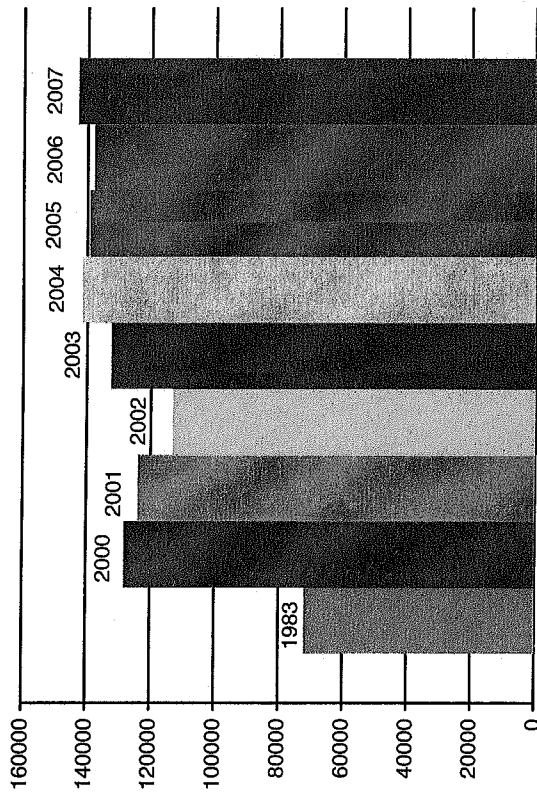
Prepared by:
Amber Kent Finkelstein,
Circulation Desk Supervisor

2007 Other Circulation by Category



Prepared by:
 Amber Kent Finkelstein,
 Circulation Desk Supervisor

Total Circulation by Year



Year	Circulation Total
1983	71,873
2000	128,124
2001	123,974
2002	113,321
2003	132,559
2004	141,587
2005	139,410
2006	137,902
2007	142,927

Fund Report Pay 2007

FR 25

4950142 BEECH GROVE PUBLIC LIBRARY
WORK DRAFT

05/05/2007 10:58AM

FUND: 0101

FUND: 0180

FUND: 2011

	AV:	\$451,904,310	AV:	\$451,904,310	AV:	\$451,904,310
1. Budget Estimate		823,017		346,000		77,769
2. Expenditures J1-D		369,780		173,000		0
3. Add App J1 - Dec		0		0		0
4A. Temporary Loans		338,004		0		0
4B. Loans Not Pd 12/31		0		0		0
5. TOTAL EST EXP		1,530,801		519,000		77,769
6. Cash Balance 6/30		354,436		148,294		32,245
7. Dec Tax Collector		367,935		177,640		0
8A. Misc Rev Jan - Dec		36,037		12,856		85,000
8B. Misc Rev Total		70,136		22,416		10,000
9. TOTAL FUNDS		828,544		361,206		127,245
10. NET AMT REQ		702,257		157,794		(49,476)
11. Operating Balance		46,548		173,000		49,476
12. TOTAL (10+11)		748,805		330,794		0
13. PTRC		0		0		0
14. NET AMNT TO R		748,805		330,794		0
15. Levy Excess		0		0		0
16. TAX LEVY		748,805		330,794		0
TAX RATE		0.1657		0.0732		0.0000

FUND	GENERAL	ASSESSED VALUE	RATE	LEVY	CNTRL
0101	GENERAL	451,904,310	0.1657	748,805	UT
0180	DEBT SERVICE	451,904,310	0.0732	330,794	0
2011	LIRF	451,904,310	0.0000	0	UT
		TOTAL	0.2389	1,079,599	

UNIT

Normal Max Levy:	748,487
Minus Levy Excess:	0
Plus Fin Inst Tax:	864
Plus Misc Changes:	0
Working Max Levy:	749,351

CTL UT Working MAX 749,351 Under Max by 546

SCHEDULE OF DEBT SERVICE REQUIREMENTS AND LEASE PAYMENTS

	<u>Principal</u>	<u>Interest⁽¹⁾</u>	<u>Total Debt Service</u>	<u>Total Annual Debt Service</u> ↓	<u>Lease Rental Payment⁽²⁾</u>
7/15/01 7/15/01		\$ 109,236.56	\$ 109,236.56		
1/15/02 1/15/02		87,779.38	87,779.38		\$ 163,000.00
7/15/02 7/15/02	85,000.00	87,779.38	172,779.38	\$ 197,015.93	163,000.00
1/15/03 1/15/03	85,000.00	85,739.38	170,739.38		173,500.00
7/15/03 7/15/03	90,000.00	83,699.38	173,699.38	343,518.75	173,500.00
1/15/04 1/15/04	90,000.00	81,539.38	171,539.38		174,500.00
7/15/04 7/15/04	95,000.00	79,379.38	174,379.38	345,238.75	174,500.00
1/15/05 1/15/05	95,000.00	77,099.38	172,099.38		175,000.00
7/15/05 7/15/05	95,000.00	74,819.38	169,819.38	346,478.75	175,000.00
1/15/06 1/15/06	100,000.00	72,539.38	172,539.38		173,000.00
7/15/06 7/15/06	100,000.00	70,139.38	170,139.38	342,358.75	173,000.00
1/15/07 1/15/07	105,000.00	67,739.38	172,739.38		173,000.00
7/15/07 7/15/07	105,000.00	65,219.38	170,219.38	342,878.75	173,000.00
1/15/08 1/15/08	110,000.00	62,699.38	172,699.38		173,000.00
7/15/08 7/15/08	115,000.00	60,059.38	175,059.38	342,918.75	173,000.00
1/15/09 1/15/09	115,000.00	57,299.38	172,299.38		175,500.00
7/15/09 7/15/09	120,000.00	54,424.38	174,424.38	347,358.75	175,500.00
1/15/10 1/15/10	120,000.00	51,424.38	171,424.38		174,500.00
7/15/10 7/15/10	125,000.00	48,424.38	173,424.38	345,848.75	174,500.00
1/15/11 1/15/11	130,000.00	45,299.38	175,299.38		176,000.00
7/15/11 7/15/11	130,000.00	42,049.38	172,049.38	348,723.75	176,000.00
1/15/12 1/15/12	135,000.00	38,799.38	173,799.38		174,500.00
7/15/12 7/15/12	140,000.00	35,424.38	175,424.38	345,848.75	174,500.00
1/15/13 1/15/13	140,000.00	31,924.38	171,924.38		175,500.00
7/15/13 7/15/13	145,000.00	28,424.38	173,424.38	347,348.75	175,500.00
1/15/14 1/15/14	150,000.00	24,799.38	174,799.38		176,000.00
7/15/14 7/15/14	155,000.00	20,955.63	175,955.63	348,223.75	176,000.00
1/15/15 1/15/15	155,000.00	16,983.75	171,983.75		175,500.00
7/15/15 7/15/15	160,000.00	12,953.75	172,953.75	347,939.38	175,500.00
1/15/16 1/15/16	165,000.00	8,793.75	173,793.75		175,000.00
7/15/16 7/15/16	170,000.00	4,462.50	174,462.50	346,747.50	175,000.00
				174,462.50	178,000.00
	<u>\$ 3,525,000.00</u>	<u>\$ 1,687,910.31</u>	<u>\$ 5,212,910.31</u>	<u>\$ 5,212,910.31</u>	<u>\$ 5,393,000.00</u>

through January 15, 2002, is to be paid from capitalized interest funded with Bond proceeds. Lease Rental payments due June 30, 2001 and December 31, 3001, will be deposited in the Construction Account. Lease Rental payments are due June 30 and December 31 of each year.

Assessed Value

As per Richard in the Marion County Auditor's Office on Dec. 17, 2008 in a telephone interview:

AV is \$521,035,285 which is for 06, pay 07

He has no idea of current or projected growth of Beech Grove

I also spoke with the elected Beech Grove Clerk-Treasurer, Sarah Kincaid, and she had no projections of city growth. We are landlocked but there are some changes that could help in this area. St. Francis is moving from Beech Grove which in much way is negative but if the right tenants could be found, the facility could be used by taxpaying institutions. Also, Amtrak has a large facility in Beech Grove and that also could be closed and changed to include redevelopment as a taxpaying entity. There two parcels along with a few other parcels of land could offer some growth potential.