



Gary Community School Corporation

Strong. Resilient. Built for Education.

MANAGER REPORT

DISTRESSED UNIT APPEALS BOARD (DUAB)

May 13, 2021

Prepared by



Distressed Unit Appeals Board

Manager Report

Prepared by Gary Schools Recovery, LLC

May 13, 2021

TABLE OF CONTENTS

1.0 MANAGER UPDATE	2
MANAGER'S SUMMARY APRIL 2021	2
CURRICULUM REPORT	4
FREQUENTLY ASKED QUESTIONS (FAQ) FOR APRIL 2021	6
2.0 ELEMENTARY AND SECONDARY SCHOOLS EMERGENCY RELIEF (ESSER) PLAN FOR GCSC.....	7
OVERVIEW	7
INTEGRATED STRATEGY	8
RESOURCES USED TO SHAPE THE ESSER STRATEGY AND SPENDING PLAN.....	9
EVIDENCE BASED DECISIONS	9
OUTREACH AND FEEDBACK	9
GUIDING GOALS: ACADEMICS AND SUSTAINABILITY	9
SPENDING PLAN CATEGORIES AND TARGET PERCENTAGES	10
CHALLENGES ASSOCIATED WITH ESSER	10
ONGOING PROCESS	11
3.0 CONTRACT APPROVAL.....	12
CHROMEBOOK PURCHASING	12
FIELDTURF USA CONTRACT	22
CURRICULUM ADOPTION	30
MCGRAW HILL.....	32
HOUGHTON MIFFLIN HARCOURT	51
SAVVAS.....	66

I.0 MANAGER UPDATE

MANAGER'S SUMMARY APRIL 2021

- ◆ Our district has partnered with the NAACP to host a training at our Career Center for a new apprenticeship program for solar panels. The NAACP has approximately 15 slots for this new program and has committed to giving 2 to 3 of those slots to our students who want to go through this program. This is a free program for those students and community members who get selected and will be a wonderful opportunity for them to have a great career opportunity upon completion.
- ◆ We have applied for a new grant opportunity offered through the IDOE to be on a strategic planning consortium related to the Covid-19 relief funds. We are always looking for ways to collaborate with other districts and to continue to expand opportunities about how to best utilize our funds for district growth. We anticipate finding out if we were selected by the end of the month.
- ◆ In an effort to continue to wrap services around some of our seniors who are in credit jeopardy, we have partnered with a local community agency (Gateway) who are working with us on helping provide additional tutoring and transition services. We have been able to enroll a group of students in this program who were in jeopardy of dropping out. In addition, several of these students' parent(s) did not have a high school diploma and we have decided to assist them in obtaining a diploma as well. We have parents working next to their own student side-by-side getting their high school education and it is a very powerful thing to see. We have invited these parents to walk next to their student at high school graduation to celebrate this wonderful achievement. We hope to continue to expand this program so that we can offer opportunities to multi—generations of family members.
- ◆ We will be hosting graduation for our students in person this year. We will be doing graduation outside on the football field to allow for social distancing. The graduation ceremony will be by June 6th at 2:00. We are excited that Dr. Vernon Smith and Eddie Melton have agreed to be guest speakers at this event.
- ◆ We are actively transitioning into our new Student Management System (Skyward). Dozens of training sessions have already taken place for staff and we have many more scheduled for staff, students and parents.
- ◆ Our coaching staff has done a phenomenal job of ensuring our basketball players were both academically eligible as well as athletically eligible for college. Currently, 5 out of our 7 seniors have already received full scholarships to college for next year. We anticipate the other two will have scholarship offers shortly. The addition of the study tables this

year as well as the tutoring was a key component to their success. We look forward to watching their continued success in college!

- ♦ The district continues to push its enrollment campaign. We are actively enrolling new students to the district and feel that we will continue to see an enrollment increase for the beginning of next school year.
- ♦ West Side Leadership Academy was the host of a mobile vaccination clinic for both our students and the community. We worked closely with Dr. Box and her team to mobilize a space within 3 short days. Multiple school districts bused their students to our school district so that the students could get their shots. Gary School District provided buses to shuttle parents and community members to and from our school during that week as well. We continue to push the education of why getting vaccinated is so critical and what it affords them.

CURRICULUM REPORT

Accelerated Learning Grant:

The accelerated learning grant is a competitive grant offered by Indiana to address learning loss due to the pandemic. GCSC is applying via a partnership with area charter and LEAs as a lead applicant to expand career options through our Career and Technical Education programs while expanding the alternative Gateway program to support children who have fallen behind. The ask is \$1.5 million dollars in start-up and programming costs.

State Testing Update:

The testing season is upon us. Students in grades 3 – 8 and 9th graders will take iLearn this month. In collaboration with teachers, building and district administrators, we have devised a testing schedule that will accommodate students in each class whether they are virtual or in-person to be tested in a safe conducive environment at our schools.

During the four weeks of iLearn testing, tested elementary and middle school students and their teachers will come into the buildings on Wednesdays to complete testing. We have arranged with our cleaning company to have our buildings fogged during evening hours to accommodate this need. We would like to thank the teachers for being flexible and working as a team.

- ♦ IREAD 3 Testing begins March 8, 2021 to March 26, 2021- Students will come in person to take tests. We have made accommodations for safety and transportation where necessary.
- ♦ iLearn Testing Grades 3-8 are April 19 – May 14, 2021 - Students will come in person to take tests. We have made accommodations for safety and transportation where necessary.
- ♦ iLearn Biology Testing will be April 19 – May 21, 2021- Students will come in person to take tests. We have made accommodations for safety and transportation where necessary.

Summer School

Summer school this year will be offered to PreK to 12th grade students. Our district teachers and instructional coaches are creating our summer school curriculum. We will offer both traditional remediation along with STEM this summer to our students. We will have two sessions with extended days for four days a week.

Session 1: Grades Pre K to 12: June 7th – July 1st Mondays through Thursdays from 9:00- 2:00

Session 2: Grades 9th – 12th July 5th – July 29th Mondays through Thursdays from 9:00 – 2:00

Instructional Coaching

We will be providing instructional coaches to each building in the district. This additional support for our teaching staff will allow us to streamline district efforts and support teaching and learning in a way that has not been done before in the district.

Graduation

Our 2020-2021 graduation ceremony is set for June 6, 2021 at 2:00. We have planned for graduation to be held on the football field. Social distancing will be followed and a rain option has been planned.

FREQUENTLY ASKED QUESTIONS (FAQ) FOR APRIL 2021

- **When will freshman and sophomores be able to return to the building?**
The next round of in-person entry will most likely take place with the new school year. However, it depends on the guidelines set forth by our local health department and the CDC.
- **When is spring break??**
April 5-12
- **I would like to know after spring break would Students be returning back to West Side Leadership Academy?**
West Side will contact you directly for in-person attendance.
- **How do I obtain my infinite campus login?**
Please contact your home school for log-in access.
- **What has been the outcome of Gary Roosevelt property/historic place designation RFI bids?**
Several proposals were submitted for acquisition of Roosevelt. The guidelines specifically indicated that proposals should include a viable plan that would ensure the building is used in such a way that it benefits the community and upholds the legacy of Gary Roosevelt. Additionally, there must be proof of the financial ability to support said plan. The proposals received in the first two rounds did not meet all of the requirements. Another request for proposals will go out later this year. Information about the process is located on our website at Garyschools.org. Thanks so much for your inquiry.
- **Where can I find the bus schedule? I was informed that it's on the Gary Community School Corporation website. But can't find it.**
Due to varying schedules and drop-off/pick-up sites, your individual school will share the bus schedule with families that have opted for in-school instruction.

2.0 ELEMENTARY AND SECONDARY SCHOOLS EMERGENCY RELIEF (ESSER) PLAN FOR GCSC

OVERVIEW

The Gary Community School Corporation (GCSC) will receive approximately \$71 million of one-time revenue from the federal government to support recovery from the COVID-19 pandemic. This revenue is now referred to as Elementary and Secondary Schools Emergency Relief (ESSER). ESSER funds cover all three rounds of federal stimulus funding.

Each of the three rounds of stimulus funding comes with unique guidelines, requirements, and timelines. ESSER 1 revenue of approximately \$4.6 million has been spent or allocated for spending on returning to in-person learning. The remaining approximately \$67 million for ESSER 2 and 3 revenue must be fully spent by the end of 2023 for ESSER 2 and by the end of 2024 for ESSER 3.

The strategy and spending plan for ESSER revenue is the responsibility of GCSC and the Manager, MGT Consulting LLC (MGT) through Gary Schools Recovery LLC (GSR). Officials from GCSC and MGT, with advice and input from multiple individuals and organizations, have created the framework for a comprehensive ESSER strategy and spending plan. Both the overall strategy and spending plan are living documents that will evolve over the lifespan of ESSER funds.

While ESSER funds were appropriated by the federal government, guidance, program and initiative approval, and audit compliance is provided by Indiana state agencies including the Indiana Department of Education (IDOE), the State Board of Accounts (SBOA) and because of GCSC's unique situation, the Distress Unit Appeals Board (DUAB). The ESSER 2 funds have a May 15 expenditure approval deadline through IDOE and the ESSER 3 funds have a June 15 expenditure approval deadline also through IDOE. However, the spending plan in total and individual components of the plan can be amended and adjusted without limit.

ESSER funding approval is organized similar to Title funding approval which runs through the IDOE. Due to GCSC's unique situation, ESSER strategy approval runs through the DUAB. Approval for the GCSC ESSER overall strategy and spending plan will follow a three-phase approach. The first phase is this document providing an overview of the overall strategy and spending plan. The second phase is a more detail spending plan with representative programs and initiatives, timelines for expenditures, metrics to measure the success of representative programs or initiatives, the desired outcomes of representative program or initiatives, and the anticipated lifespan of representative programs and initiatives. This phase will be presented at the June DUAB meeting. The third phase is the ongoing monitoring and evolution of the spending plan. As situations change both related to GCSC operations but also the pandemic, there is no doubt the initial spending plan will require constant monitoring and frequent adjustments.

INTEGRATED STRATEGY

GCSC receives funding from multiple sources and in multiple categories. GCSC funding includes, but is not limited to, the following sources.

- ♦ State tuition support
- ♦ Operations support
- ♦ Federal Title programs
- ♦ IDEA for Special Education
- ♦ Food and Nutrition
- ♦ School Improvement Grants
- ♦ Grants and awards
- ♦ School Improvement Fund
- ♦ Operating Referendum
- ♦ ESSER

In crafting the overall strategy and spending plan, these funds must be considered as a whole rather than as individual components. The spending plan must leverage the flexibility in ESSER funds to appropriately maximize all funds and sources to impellent the overall strategy. For example, the School Improvement Fund includes several projects that are appropriate and allowable to be paid for with ESSER funds. Therefore, moving projects out of the School Improvement Fund plan into the ESSER spending plan will allow for projects not initially included in the School Improvement Fund to be undertaken while maximizing and stretching ESSER dollars.

The overall ESSER strategy and spending plan is grounded in the needs of GCSC. Rather than starting with the goal of spending the ESSER funds, the starting point in developing the overall strategy and spending plan is the immediate, intermediate, and long-term needs of the District. Needs were identified and clarified through the following two guiding goals.

1. Continue improving academics
2. Continue building a sustainable district

Based on these two guiding goals, priorities were developed. Based on these priorities the following categories for the spending plan were developed.

1. Instruction
2. Technology
3. Facilities
4. Equipment
5. Personnel

Priorities were ranked based on the two guiding goals to establish the programs and initiatives within each of the five categories in the spending plan. These five categories were then assigned target spending percentages to ensure the spending plan is aligned with the overall strategy.

RESOURCES USED TO SHAPE THE ESSER STRATEGY AND SPENDING PLAN

GCSC specifically chose programs and initiatives that are aligned with the allowable activities under the ESSER statute and with IDOE's accelerated learning guide. Additionally, program and initiatives are driven by GCSC's Path Forward plan which relies upon current data to determine the appropriate steps.

GCSC has submitted an application to participate in the innovative leaders' consortia that IDOE is offering to pair like-minded districts to improve student performance through the ESSER funds. Similarly, GCSC participates in the Region 1 Superintendent and Curricula councils.

EVIDENCE BASED DECISIONS

GCSC will utilize evidence-based research that supports learning activities and details the conditions that must be present for programs and initiatives to have an impact. Evidence based research is pulled from guidance from IDOE's Accelerated Learning Guide but also from the What Works Clearinghouse, Johns Hopkins, Pew Research Center, and other similar sources.

OUTREACH AND FEEDBACK

A community survey has been released on GCSC's website to collect feedback regarding GCSC's Return to Learn Plan, including initiatives that can be funded with the ESSER dollars. Other groups, like the ministerial alliance and the referendum ambassadors, have been involved, or will be involved, in the discussions regarding the overall strategy and spending plan.

The Gary Teacher's Union is also a partner in the development and implementation of the spending plan. GCSC has engaged in discussions and negotiations with the union as appropriate. Teacher leadership committees, such as the curriculum adoption committee, will provide input and guidance.

GUIDING GOALS: ACADEMICS AND SUSTAINABILITY

The overall ESSER strategy and spending plan are based on the two guiding goals of continuing to improve academic performance and continue to build a sustainable district. Many programs and initiatives will provide a direct tie to improving student achievement. Programs and initiatives are based on IDOE's accelerated learning guide and evidence-based research provided by the U.S. Department of Education's What Works Clearinghouse that demonstrate statistically significant

effects in raising student achievement. For example, a longer school day with more qualified teachers provides additional learning time for students and the opportunity to address learning loss. Another example is new programs for college and career pathways will increase student options for postsecondary and improve student engagement at the high school level. One other example is a virtual academy will allow GCSC to offer flexible learning options for students who need individualized schedules due to life circumstances (homebound, teen parent) rather than dropping out of school.

Many programs and initiatives will provide an indirect tie to improving student achievement. However, indirect activities are fully supported by the ESSER related legislation. For example, GCSC plans to utilize ESSER funding to fix roofs across the district. Repaired roofs will not only reduce mold and mildew in the buildings but also open currently unavailable or unusable spaces. Quality learning facilities are considered a condition for learning to occur, and in this case, directly achieve an outcome of the ESSER funds which is to make learning environments healthier and safer. Ultimately improving building suitability will enhance the learning environment that leads to learning gains and achievement.

SPENDING PLAN CATEGORIES AND TARGET PERCENTAGES

GCSC received approximately \$4.6 million for ESSER 1. All this revenue has been spent, or allocated, to the return to in-person learning.

GCSC anticipates receiving approximately \$67 million in ESSER 2 and 3 funding in 2021. ESSER 2 and 3 funds will be spent in the following categories.

- ♦ Instruction
- ♦ Technology
- ♦ Facilities
- ♦ Equipment
- ♦ Temporary personnel

Target percentages for total expenditures by category will be included In Phase 2 of the overall strategy and spending plan.

CHALLENGES ASSOCIATED WITH ESSER

The inflow of one-time ESSER funds creates an opportunity to positively impact current, and future, GCSC students, families, and the community. While the ESSER funds address immediate needs, intermediate needs, and long-term needs, the funds do come with challenges.

One of the most significant challenges from the ESSER funds is the number of programs and initiatives that could be undertaken. Too many initiatives, in too short of a time frame, administered or overseen by too few administrators, could minimize the many advantages of the ESSER funds. To help mitigate this challenge many of the programs and initiatives will be administered by different officials in the District so that programs and initiatives are spread evenly across the District. Additionally, new, or enhanced, programs and initiatives will likely represent change for teachers, administrators, staff, students, and families. Care must be granted on phasing in initiatives and paring initiatives with substantial and effective training and ongoing support.

Another significant challenge from the ESSER funds is the possibility of minimizing the effectiveness of the overall strategy by diluting or spreading the funds across too many programs and initiatives rendering all programs and initiatives less effective. All programs and initiatives must be carefully selected within the integrated framework of the overall strategy.

ONGOING PROCESS

The ESSER strategy and spending plan is an ongoing process that will require adjustments as initiatives and programs are implemented and conditions within the District change over the next three years. Flexibility and agility are the two key attributes for creating and maintaining the strategy and spending plan.

For the June 2021 DUAB meeting, GCSC will present details about programs and initiatives within the spending plan. These details will include estimated dollar amounts of key programs and initiatives by major category and how these programs and initiatives are connected to the overall District plans and strategy.

Following the June 2021 DUAB meeting, GCSC will maintain frequent communication with the DUAB Executive Director as the spending plan evolves and the overall strategy crystallizes. Additionally, GCSC and the DUAB Executive Director will recommend a cadence of spending plan updates and reports to the DUAB.

3.0 CONTRACT APPROVAL

CHROMEBOOK PURCHASING



@ Trafera.com
 2550 University Ave W Ste 315-S
 Saint Paul, MN 55114
 (651) 888-7922

February 16, 2021

Gary Community School Corporation
 Attn: Darrell Riddell
 900 Gerry Street
 Gary, IN 46404

Chromebook Purchasing

To Mr. Riddell and Whom It May Concern,

Introduction

Please accept our enclosed proposal for your *Chromebook Purchasing* invitation to bid. Trafera is one of the top national providers of innovative computing solutions. In January 2021, FireFly Computers and Trinity3 Technology united so that they can better serve the technology market and created Trafera. With 17 years of combined experience, we have become experts in offering customer-focused solutions that make rollouts and transitions a breeze. Trafera focuses on providing knowledgeable, end-to-end customer support and innovative service options to save you time, effort, and money.

We currently do business with over 3,400 school districts and organizations across all 50 US states. Trafera is a Google for Education Premier Partner and one of the top 3 vendors of Google Chrome products worldwide. We are also an HP Platinum Partner, Lenovo Platinum Partner, HP Authorized Services Provider, and Lenovo *Premier* Authorized Services Provider.

At Trafera, we pride ourselves on providing the very best customer service in the technology industry. You will have direct access to your own dedicated, US-based, Trafera Account Manager who can help with everything from pre-sales questions to warranty support. This means you'll always get reliable service from someone who knows your account and can provide you with the timely assistance you deserve.

Proposal Overview

We are proposing two options for the District to consider. Our quotes were created by using the District's requested template as follows:

Option 1:

Quote A-1	HP Chromebook x360 11 G3 EE (with & without 1 Year ADP Warranty)
Quote B	Google Chrome Education Upgrade

contracts@trafera.com | Toll Free 1.855.862.5120 | Fax 651.888.7916



Quote C-1	HP Protective Cases: MAXCases Extreme Shell-S
Quote E-1	3-Year HP Care Pack Pick-Up and Return Service
Quote F	Aver Charge E36c+ 36 Device Economy Charging Cart

Option 2:

Quote A-2	Lenovo 300e Chromebook 2 nd Gen (with & without 1 Year ADP Warranty)
Quote B	Google Chrome Education Upgrade
Quote C-2	Lenovo Protective Cases: MAXCases Extreme Shell-S
Quote E-2	Lenovo 3 ½ Year Accidental Damage Protection Warranty
Quote F	Aver Charge E36c+ 36 Device Economy Charging Cart

As requested, we have also included a quote outlining optional services that can be purchased with either device including, White Glove Setup, Asset Tagging, MAC Addresses, Case Installation, and Trafera Green Pack. All products are brand new, and free FOB destination shipping is included. As requested, our proposal will be valid for forty-five (45) days from the bid due date. Our legacy companies are registered with SAM.gov, and we are currently in the process of updating the accounts to our new Trafera name. We anticipate this will be updated before the items are delivered. The RFP has conflicting information and states both Net 30 and Net 45 terms as desired payment terms; we have included Net 30 terms with this bid. If the District requires Net 45 terms, please contact your Trafera Account Manager for details on updating those preferences.

Last fall, Google Extended the Auto Update Expiration (AUE) on many Chromebooks currently for sale, as well as new Chromebooks launching in the future. In addition to the extended AUE, the Google Chrome Education Upgrade (formerly Chrome Education License) will have over 200 policies for administrators to use while Google adds even more new features based on educator feedback. In line with these enhancements to the Chrome Education Upgrade, Google is increasing its MSRP from \$30 to \$38. Because of this, our price we offer the Google Chrome Education Upgrade at will change, effective March 5th, 2021.

Device Specifications

The HP Chromebook x360 11 G3 EE is equipped with an Intel Celeron N4020 Dual-Core Processor, 4GB RAM, 32GB storage, 802.11 ac wireless, and a Google Auto Update Expiration (AUE) of June 2026. Its 11.6" HD touchscreen has a resolution of 1366x768 and a 720p webcam. Ideal for the classroom, the Chromebook has metal-reinforced corners, a pick-resistant, spill-resistant keyboard, and the ability to survive a drop of 122cm. HP Chromebooks come with a 1-year depot warranty.

The Lenovo 300e Chromebook 2nd Gen has an Intel Celeron N4020 Dual-Core Processor with 4GB RAM, 32GB storage, 802.11 ac wireless, and a Google AUE of June 2026. The 11.6" IPS

Page 2 of 7

contracts@trafera.com | Toll Free 1.855.862.5120 | Fax 651.888.7916



touchscreen has a resolution of 1366x768 and a webcam that shoots video in 720p. Built for education, the Chromebook has a spill-resistant keyboard with anti-pry key caps, military-grade rubber bumpers, reinforced ports, and a versatile 360-degree hinge. Lenovo Chromebooks come with a 1-year depot warranty.

The MAXCases Extreme Shell-S case is designed specifically to fit the HP Chromebook x360 11 G3 EE and the Lenovo 300e Chromebook 2nd Gen models. It features a full-coverage wrap-around design with protective bumpers and corners. Even with 360-degree coverage, the case has open access to all USB and charging ports. The MAXCases Extreme Shell-S case is also charging-station compatible.

The AVerCharge E36c+ 36 Device Economy Charging Cart can store and charge up to 36 devices with up to 15" screens at once. The cart has easy cable management channels to keep cords organized and features intelligent charging. It also has 5" swivel casters for easy movement and a 3-point locking mechanism to secure the devices.

Delivery

The ongoing COVID-19 outbreak has caused disruptions in availability due to manufacturing shortages and supply-chain issues. At this time, we can't in good faith guarantee delivery by a specific date. We estimate that we can deliver the devices approximately 6 months after a purchase order is received for either model. We are currently fulfilling orders on a first-in-first-out basis, so the sooner we receive a purchase order, the more accurate our delivery estimate is. Carts are currently available 3-6 weeks after receiving the purchase order if you want to have the carts before the devices; otherwise, we can arrange to have the carts delivered with the devices. For the most up-to-date delivery estimates at any given time, please contact your Trafera Account Manager.

Due to the high volume of products we sell, Trafera maintains an extremely favorable relationship with our manufacturers, and we will be one of the first in line to receive products throughout this disruption. Additionally, we are one of the only vendors with our own private warehouses where we store tens of thousands of devices. This allows us to shorten delivery times and prevent any product shortages wherever possible.

The severity of these shortages has not been fully realized by all the technology partners in North America. We continue to see commitments being made to unrealistic timeframes with unavailable products. We recommend that you communicate with both partner, distribution, and OEM contacts alike to ensure your required timeframes can be met. Trafera will continue to under-promise and over-deliver as well as communicate updates on product availability and delivery timelines as we receive them.

Page 3 of 7

contracts@trafera.com | Toll Free 1.855.862.5120 | Fax 651.888.7916



FREE Technical Assistance from Trafera Engineers for Chromebooks

At Trafera, we have unparalleled experts in deploying 1-to-1 Chromebooks in education. If awarded, our support team will be available to you by phone or email at no additional charge to answer unlimited questions about how to configure your Google Chrome Education Upgrade or tackle any troublesome issues that arise.

Warranty for Chromebooks

Trafera is an HP Authorized Services Provider and Lenovo Premier Authorized Services Provider, which allows us to be a one-stop-shop for any warranty or repair services needed throughout the life of your devices. We make submitting warranty claims easy, just contact Trafera by toll-free phone (855-862-5120), email (support@trafera.com), or web (<https://www.trafera.com/get-support/>).

We further simplify and streamline your warranty process through our free Trafera RMA program. With the delivery of your order, we'll include several RMA boxes, and whenever a device needs repair, just record the serial number, insert it into the protective packaging provided, and when you have anywhere from 5-12 devices ready to go, simply contact us for a pre-paid UPS shipping label. Additional RMA boxes will be replenished as needed throughout the length of the warranty term. This program is solely for your convenience and does not interfere with your rights to send individual devices for repair under the standard warranty terms.

Optional Premium Customizable White Glove Setup with Asset Tagging and MAC Addresses
Our Google® Certified support team has set up and configured Chrome Management settings for hundreds of thousands of Chromebooks, from large deployments of 10,000+ all the way down to small deployments of just a few dozen devices. We will work with you to go beyond the basic white glove enrollment most vendors offer, and we'll pre-configure your Chromebooks exactly the way you want them. We can pre-assign Chromebooks to specific OUs (organizational units), apply customized desktop backgrounds, and even sort your shipments into separate groups according to OU, grade level, or school destination. Sometimes this means sorting devices onto separate pallets, but it can also be as simple as us putting a colored sticker on the outside of each box or bulk-shipped device bag that identifies its OU, building, or room designation. No other vendor goes as far as we do to provide the customization and expertise perfect for your unique District's needs. Our typical "White Glove" setup includes:

- Pre-enrolling devices in the District's G Suite (Google Apps) Domain
- Preconfiguring Wi-Fi settings for all devices, if purchased
- Updating Chrome OS to the latest stable public release
- Applying District-specific settings and customizations to each device, if desired
- Assigning subsets of devices to specific Organizational Units (OUs), if desired

Page 4 of 7

contracts@trafera.com | Toll Free 1.855.862.5120 | Fax 651.888.7916



- Attaching asset tags to District specifications
- Capturing of MAC addresses
- Testing devices to replace defective and DOA units before shipping
- Charging the device fully and powering it down after enrollment

Optional FREE Trafera Green Pack

As a "green" waste-reducing option, we are including our Green Pack bulk packaging services. Devices will be shipped to the District in large "Gaylord" style boxes with slotted foam or cardboard dividers that hold approximately 240 devices each. This method reduces our packaging materials by an average of 73.5%. Our Green Pack is fast and easy, and reduces the time and staff required to unpack orders. Trafera compresses and bundles our leftover boxes into re-usable cardboard bales that are picked up by a local cardboard recycler.

FREE Trafera TRAILS

TRAILS (Technology, Resources, Activities, and Investigative Lessons for Schools) is a powerful library of lessons and professional learning experiences that empower teachers to transform their instruction by broadening their technology fluency. TRAILS comes in two variations: TRAIL Guides and TRAIL Mix. TRAIL Guides are thorough, rigorous courses that follow the research-based 5E Model of Instruction. They are organized into five thematic lesson units that cover multiple weeks of instruction. These lessons are tightly aligned to Next Generation Science and ISTE Standards. TRAIL Guides follow Universal Design For Learning guidelines to ensure these lessons accommodate every learner. Looking for something a little smaller? Check out TRAIL Mix! This variation offers power-packed activities, is perfect for virtual delivery, and is designed to be taught in under 45 minutes. Every TRAIL Mix activity has fun interdisciplinary components too. When you purchase devices with Trafera, you'll have access to TRAILS, all at no charge. To create an account, visit www.teachwithtrails.com.

Optional Off-Warranty Parts and Repairs

Many of our customers have chosen to self-maintain their Chromebooks that are no longer under warranty. In support of this effort, Trafera offers an easy-to-use website for locating and purchasing Chromebook repair parts at <http://fireflyrepairzone.com>. For repairs that are beyond your expertise, or if you're just too busy, our certified technicians can also perform "break-fix" repairs after the warranty period using the same convenient RMA portal and free two-way shipping on devices bulk-packed in our provided Smart RMA boxes. Have a mixture of warrantied and off-warranty devices? No problem. Just submit them all together and we'll sort out which repairs are outside the warranty, send you a quote for the cost of repairs, and wait for your answer on whether to repair each device or just send some of them back unrepai red at no cost.

Page 5 of 7

contracts@trafera.com | Toll Free 1.855.862.5120 | Fax 651.888.7916



Trafera also offers a "Do-It-Yourself Chromebook Repair Kit." The kit includes the same tools, parts, and supplies our own Trafera technicians use in a unique 5-drawer mobile storage cart. It's enough for two or more simultaneous technicians to perform almost every Chromebook repair. The kit optionally includes access to Trafera's professional online video library of step-by-step Chromebook repair videos and live on-demand consultation with our Trafera Solutions Engineers by phone or email. It's a great way to launch a student repair program and a cost-effective way to extend the life of district technology.

References

At Trafera, we're proud of our reputation for having the best customer support in the technology industry. We invite you to reach out to our other customers in your area for references and examples of the technology solutions that have been implemented by our organization.

River Forest Community School Corporation

Michele Worles
mworles@rfcsc.k12.in.us
 219-962-7551 x3070

MSD New Durham

Mary Pointon
mpointon@westville.k12.in.us
 219-785-2239

New Albany-Floyd County Consolidated Schools

Austin Hunter
ahunter@nafcs.k12.in.us
 812-542-4700

Merillville Community Schools

Steven Kerr
skerr@mvsc.k12.in.us
 219-650-5355

Michigan City Area Schools

Kevin McGulre
kmcgulre@mcas.k12.in.us
 219-873-2005

Page 6 of 7

contracts@trafera.com | Toll Free 1.855.862.5120 | Fax 651.888.7916

**Conclusion**

We hope we've helped show you that our proposal provides the very best solution for your upcoming technology purchase. Please let us know if we can send any additional information or answer any questions. Thank you.

Sincerely,

A handwritten signature in cursive script, appearing to read "Nikki Levin".

Nikki Levin
Sr. VP of Operations, Trafera LLC

Primary Sales Contact:

Abby Erickson
612-808-9382 (direct)
1-855-862-5120 x 2135 (toll-free)
651-888-7916 (fax)
abby.erickson@trafera.com

Page 7 of 7

contracts@trafera.com | Toll Free 1.855.862.5120 | Fax 651.888.7916



Trafera Headquarters
 2550 University Avenue W
 Suite 315-S
 Saint Paul, MN 55114
 www.trafera.com

Quote #: E000041601

Bill To: Darrell Riddell
 Gary Community School Corporation
 Administration Central Office/Business Services
 900 Gerry Street
 Gary IN 46406
 USA

Ship To: Darrell Riddell
 Gary Community School Corporation
 Administration Central Office/Business Services
 900 Gerry Street
 Gary IN 46406
 USA

Gary Community School Corporation	Customer Number	Quote Date	Expiration Date	Terms
Darrell Riddell	77704	3/1/2021	3/31/2021	Net 30
dridell@garycsc.k12.in.us				

Abby Erickson
 Direct: 612-808-9382
 Fax: 651-888-7916
 Email: Abby.Erickson@trafera.com

Contract Details:

Quantity	Item	Unit Price	Extended Price
1,000	Trafera White Glove 300 Units and Above	5.00	5,000.00
	<ul style="list-style-type: none"> - Trafera White Glove 300 Units and Above - Pre-enrolled in Google Apps® domain - Custom themes and settings applied - Hardware functionality check - Google Console OU management 		
1,000	Trafera Asset Tags with White Glove	1.00	1,000.00
1,000	MAC Addresses with White Glove	1.00	1,000.00
1,000	Case Installation with White Glove	1.50	1,500.00
1,000	Trafera Green Packing	0.00	0.00
1,000	HP X360 11 G3 EE Chromebook	315.00	315,000.00
	<ul style="list-style-type: none"> - Rugged Construction - 11.6" HD Touchscreen Display (1366 x 768) - Intel Celeron N4020 Dual-Core - 4GB LPDDR4 RAM - 32GB Flash Memory - Intel UHD Graphics 600 - 2 x USB 3.1 Type-A, 2 x USB 3.2 Type-C - Chrome OS - Wifi + BT 		
30	AVer Charge E36C+ Charging Cart	747.50	22,425.00
	<ul style="list-style-type: none"> - 36 Device Economy Charging Cart - Laptop/Chromebook/Tablets up to 15" - 5" Swivel Casters - Intelligent Charging 		
30	Cart Wiring	99.00	2,970.00
1,000	MaxCase Extreme Shell-S for HP x360 EE Gen 3 Chromebook 11.6" (Black)	24.99	24,990.00

Trafera, LLC

Page 1 of 2



Trafera Headquarters
 2550 University Avenue W
 Suite 315-S
 Saint Paul, MN 55114
 www.trafera.com

Quote #: E000041601

Bill To: Darrell Riddell
 Gary Community School Corporation
 Administration Central Office/Business Services
 900 Gerry Street
 Gary IN 46406
 USA

Ship To: Darrell Riddell
 Gary Community School Corporation
 Administration Central Office/Business Services
 900 Gerry Street
 Gary IN 46406
 USA

Gary Community School Corporation	Customer Number	Quote Date	Expiration Date	Terms
Darrell Riddell	77704	3/1/2021	3/31/2021	Net 30
dridell@garycsc.k12.in.us				

Abby Erickson
 Direct: 612-808-9382
 Fax: 651-888-7916
 Email: Abby.Erickson@trafera.com

Contract Details:

Quantity	Item	Unit Price	Extended Price
1,000	Electronic HP Care Pack Pick-Up and Return Service with Accidental Damage Protection Warranty - Extended service agreement - Parts and Labor - 3 Years - Pick-up and return	79.00	79,000.00
1,000	Chrome Education Upgrade Google Chrome OS Management License *Google will raise the cost of this March 9th. Any PO's received after March 5th will be invoiced at \$34 per license	25.00	25,000.00

Please send the customer the MAC addresses BEFORE the devices ship as they would like to get them pre-whitelisted in their network. Thanks

Sale Amount: 477,885.00
 Freight: 0.00
 Sales Tax: 0.00
 Total Amount: 477,885.00

Terms And Conditions:

Prices reflect a 3% discount for cash/check payment. Credit card payment is accepted without discount. This quote is confidential and is to be viewed solely by individuals within the organization to whom it is addressed. Unauthorized distribution or disclosure of the contents of this quote is prohibited. If you are not from the organization addressed, please notify us immediately so we can prepare a quote specific to you. Prices and availability may change without notice prior to the quote expiration date.

Ordering:

Please email purchase orders to orders@trafera.com or fax orders to 651-888-7916

Questions:

If you have any questions regarding this quote, please feel free to contact your Trafera Account Manager listed above at your convenience. We pride ourselves on providing you a quick response.

Trafera, LLC

Page 2 of 2

Company Name	Chromabooks Price	Warranty	White Glove	Google License	Cases	Accidental Damage Insurance	Charging Charts	Total
Trafers	\$ 315,000.00	Included	\$ 8,500.00	\$ 25,000.00	\$ 24,990.00	\$ 75,000.00	\$ 25,395.00	\$ 477,885.00 Turn-key
OmionPro	\$ 312,000.00	Included	\$ 9,000.00	\$ 28,000.00	\$ 79,000.00	Included		\$ 428,000.00 No carts
	\$ 312,000.00	Included	\$ 9,000.00	\$ 28,000.00	\$ 85,000.00	Included		\$ 434,000.00 No carts
	\$ 312,000.00	Included	\$ 9,000.00	\$ 28,000.00	\$ 79,000.00	Included		\$ 428,000.00 No carts
Electric Strategies Inc (ESI)	\$ 276,500.00	\$ 32,400.00		\$ 25,000.00	\$ 25,770.00	\$ 36,050.00	\$ 27,375.50	\$ 417,495.60 No white glove, bad chromabook
	\$ 197,950.00	\$ 35,210.00				\$ 39,180.00		\$ 272,340.00 No licenses, No cases, No carts, No white glove
Compute-Tech-Learn (CTL)	\$ 317,000.00	\$ 69,000.00		\$ 25,000.00				\$ 411,000.00 No ADC, No cases, No carts, No white glove
Matrix Integration	\$ 312,000.00	\$ 79,000.00		\$ 24,000.00	\$ 22,110.00	Included		\$ 437,110.00 No ADC, No carts, No white glove
Trox Inc	\$ 290,000.00	\$ 66,500.00						\$ 356,500.00 No licenses, No cases, No carts, No white glove
	\$ 279,000.00	\$ 66,500.00						\$ 344,500.00 No licenses, No cases, No carts, No white glove
	\$ 294,000.00	\$ 66,500.00						\$ 360,500.00 No licenses, No cases, No carts, No white glove

FIELDTURF USA CONTRACT

COOP PRICING PROPOSAL**WESTSIDE LEADERSHIP ACADEMY**

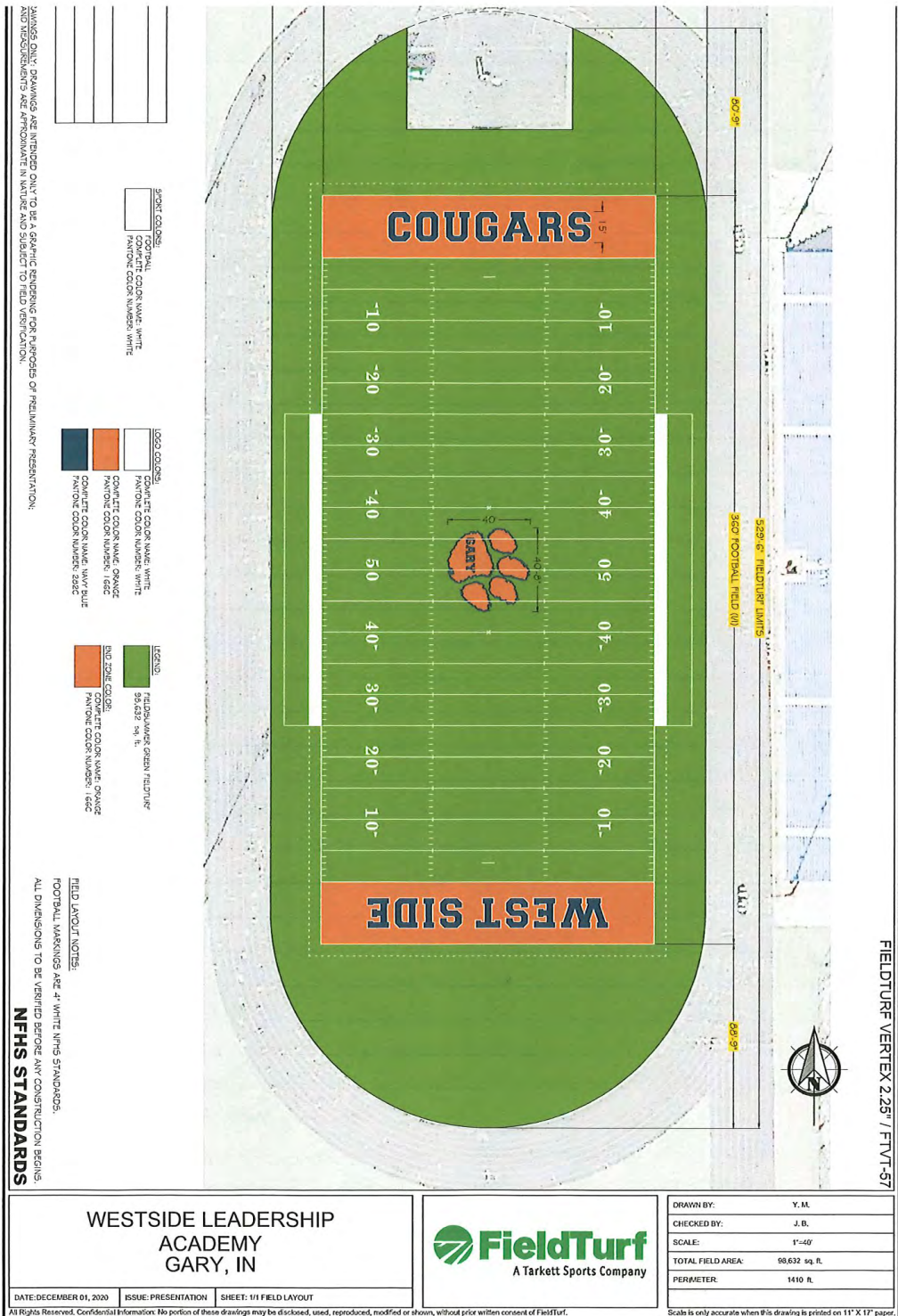
2/18/2021

FieldTurf USA, Inc. is pleased to present the following proposal. FieldTurf pricing is based on the Sourcewell contract (formerly NJPA). Sourcewell provides predetermined preferential pricing through approved vendors. Since the products have already been bid at the national level, individual municipalities do not have to duplicate the bidding process per Sourcewell Contract # 060518-FTU.



Click on the following Sourcewell hyperlink for contract due diligence documentation:

[Sourcewell](#)



PRESENTATION FIELDTURF - DRAFTER CHECKLIST

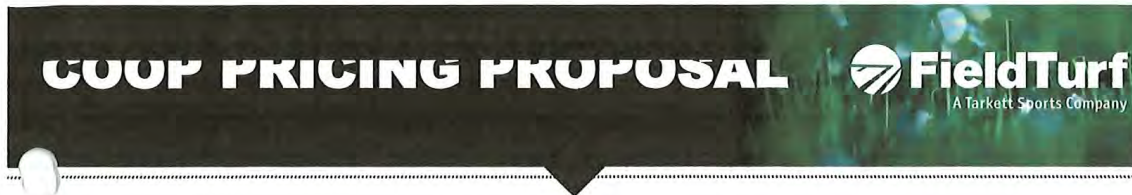
PROJECT NAME	WESTSIDE LEADERSHIP ACADEMY		
COMPANY	FIELDTURF		
STATE	IN		
TYPE OF FIELD	HIGH SCHOOL		
TEMPLATE	NFHS		
PRODUCT 1	FIELDTURF VERTEX 2.25" / FTVT-57		
PRODUCT 2	NONE		
PRODUCT 3	NONE		
SPORT	COLOR	STANDARD	COMMENTS
FOOTBALL	WHITE	NFHS	
LOGO COLORS			
WHITE			
ORANGE			
NAVY BLUE			
ADDITIONAL INFO			
DECEMBER 01, 2020			

COOP PRICING PROPOSAL



	Westside Leadership Academy (Gary HS) Varsity Football Field	Quantity	Units	Unit Price	Total
	Site Work				
1	Civil Scope (See Description Below)	98,632	SF	\$3.902968	\$384,957.56
	Subtotal Site Work				\$384,957.56
	Synthetic Turf				
2	FieldTurf FTVT-57 (2.25")	98,632	SF	\$3.94	\$388,610.08
3	Inlaid Football Numbers & Arrows	1	EA	\$7,070.00	DONATED
4	Inlaid Football Markings	1	EA	\$7,070.00	DONATED
5	Center Logo, 1-2 Colors, 40' x 41'	1	EA	\$14,000.00	\$14,000.00
6	GroomRight & FieldSweep	1	EA	\$8,000.00	\$8,000.00
7	End Zone Letters, 15' tall, 2 colors "COUGARS" "WESTSIDE"	15	EA	\$1,700.00	\$25,500.00
8	Gmax Testing, (1) Test at install	1	EA	\$1,500.00	\$1,500.00
	Subtotal Synthetic Turf				\$437,610.08
	Subtotal Project				\$822,567.64
9	Performance & Payment Bonds	1	LS	\$9,253.89	\$9,253.89
	Total Project Westside Leadership Academy (Gary HS)				\$831,821.53
	Voluntary Alternates				
A1	Vertex Prime FTVTP-57 (2.25") in lieu of Vertex FTVT-57 (2.25")	98,632	LS	\$0.35	\$34,521.20
	Performance & Payment Bonds				\$388.36
	Total Alternate #1				\$34,909.56
A2	Option 2 Layout for Center Logo (Approx. 60' x 64', 4-colors)	1	EA	\$16,720.00	\$16,720.00
	Performance & Payment Bonds				\$188.10
	Total Alternate #2				\$16,908.10
A3	Add "GARY" to Option 2 Layout for Center Logo (A2)	1	EA	\$5,900.00	\$5,900.00
	Performance & Payment Bonds				\$66.38
	Total Alternate #3				\$5,966.38
A4	On-field Naming Logo between the 20-30 yard lines	1	EA	\$9,600.00	\$9,600.00
	Performance & Payment Bonds <i>Coach Johnson</i>				\$108.00
	Total Alternate #4				\$9,708.00
A5	Provide Engineering/Design Services	1	EA	\$36,662.63	\$36,662.63
	Performance & Payment Bonds				\$412.45
	Total Alternate #5				\$37,075.08

1.800.724.2969 | info@fieldturf.com | fieldturf.com



PRODUCT DETAILS

FieldTurf, the worldwide leader in artificial turf, is pleased to offer the FieldTurf Vertex Prestige 2.25" (FTVT-57) system, with the following product characteristics:

- **Pile Height:** 2.25 Inches
- **Infill Weight:** 3lbs sand & 3lbs ambient rubber per sq.ft.
- **Pile Weight:** 43 oz/yd²
- **Total System Weight:** 930 oz/yd²

FieldTurf has taken the necessary steps to ensure that your project will run smoothly and that the quality promised will be the quality delivered.

PRICE INCLUDES:

- a) Mobilization
- b) Survey and Layout of our work
- c) Track Bridging
- d) Cut & Cap existing irrigation
- e) Erosion control measures
- f) Perform excavation required to achieve a maximum cross slope of .75% for the finished FieldTurf system
- g) Haul spoils off site
- h) Laser grade and compact subgrade
- i) Furnish and install 6" x 12" concrete curbing at perimeter of field
- j) Furnish and install pressure-treated 2x4 nailer boards at perimeter concrete curb
- k) Furnish and install 12" perforated perimeter collector drain and tie into existing storm system within 30 LF of the field
- l) Furnish and install geotextile fabric full coverage on the turf limits of the field
- m) Furnish and install 12" wide flat panel drains on 20' centers in a herringbone pattern that will gravity feed into the collection drain
- n) Furnish and install (4) Nyloplast basins
- o) Furnish and install 4" of base stone
- p) Furnish and install 2" of finish stone
- q) Laser Grade finish stone
- r) Furnish and install (1) set of regulation goal posts including foundations
- s) One year warranty on all civil work
- t) Union Wages

COOP PRICING PROPOSAL



- u) Installation of the artificial in-filled grass surface upon a suitable base;
- v) Set of inlaid Football Markings
- w) Set of maintenance equipment: GroomRight Groomer + Allied Sweeper
- x) Center logo, as shown on rendering : 2 colors
- y) (15) EZ letters, "WEST SIDE" & "COUGARS", 2 colors
- z) Gmax Testing
- aa) An (8) year 3rd party pre-paid insured warranty on the FieldTurf artificial grass surface;

This proposal and offered pricing are based upon FieldTurf's typical dynamic base drainage system and storm water calculations. However, the scope of work/services and associated pricing are subject to change in the event of: (i) design and/or construction requirements of the local permitting authorities which dictate a change in design and/or construction and/or (ii) existing site conditions which are concealed, unknown and/or differ from readily available published data for the region.

PRICE DOES NOT INCLUDE:

- a) Design Services
- b) Any costs associated with necessary charges relating to the delineation of the field
- c) The supply of manholes or clean-outs or grates, or supply of the manhole covers
- d) Any alteration or deviation from specifications involving extra costs, which alteration or deviation will be provided only upon executed change orders, and will become an extra charge over and above the offered price
- e) Soil stabilization or remediation of any type
- f) Rock excavation
- g) Any track work, field event construction, track surfacing
- h) Patching of existing asphalt at inside of track
- i) Site security
- j) Boring for utilities
- k) Any electrical work
- l) Any fencing work
- m) Any athletic equipment not listed above
- n) Small vehicle to tow maintenance equipment
- o) Once subgrade has been established, a proof roll will be performed to ensure structural stability of the soils; in the event that unsuitable soils are encountered, a price to remedy these areas can be negotiated based on recommended methods per project Engineer.
- p) Installation of manholes, junction boxes, gabions, concrete rip rap, storm drainage not related to the field construction, grate inlets and RCP.



- q) Relocation, removal and repair of existing utilities not limited to electrical conduits, power poles, water, sewer, gas, cable, telephone, owner placed conduits or communication feeds within the field of play

The price is valid for a period of 90 days. The price is subject to increase if affected by an increase in raw materials, freight, or other manufacturing costs, a tax increase, new taxes, levies or any new legally binding imposition affecting the transaction.

Please feel free to reach out to any member of our project team with questions about our offer:

Marit Adjei
Project Manager
(971) 806-0195

Marit.Adjei@FieldTurf.com

Blake Centers
Regional Sales Manager
(773) 569-6814

Blake.Centers@FieldTurf.com

Thank you again for your interest in FieldTurf, we look forward to working with you.

Per:

Marie-Christine Raymond, Director of Operations
FieldTurf USA, Inc. / Tarkett Sports Canada, Inc.

FieldTurf USA, Inc. holds the Cooperative Purchase contract, any PO for Contract must be made out to FieldTurf USA, Inc. 175 N Industrial Blvd NE, Calhoun, GA 30701

If you have questions regarding the FieldTurf and Beynon SmartBuy Cooperative Purchasing Program, please contact Eric Fisher at: Eric.Fisher@smartbuycooperative.com.



COOP PRICING PROPOSAL



CONDITIONS

Notwithstanding any other document or agreement entered into by FieldTurf in connection with the supply and installation only of its product pursuant to the present bid proposal, the following shall apply:

- a) This bid proposal and its acceptance is subject to strikes, accidents, delays beyond our control and *force majeure*.
- b) FieldTurf's preferred payment terms are as follows: (i) 50% of the Price upon Customer's execution of contract; (ii) 40% of the Price upon shipment of materials from FieldTurf's manufacturing facility; and (iii) Remaining balance of ten percent (10%) upon substantial completion of the field, which shall be achieved when Customer is able to use the field for its intended purpose, even if punchlist items remain and the Certificate of Completion has not been executed by Customer.
- c) Accounts overdue beyond 30 days of invoice date will be charged at an interest rate of 10% per annum.
- d) FieldTurf requires a minimum of 21 days after receiving a fully executed contract or purchase order and final approvals on shop drawings to manufacture, coordinate delivery and schedule arrival of installation crew. Under typical field size and scenario, FieldTurf further requires a minimum of 28 days per field to install the Product subject to weather and *force majeure*.
- e) FieldTurf requires a suitable staging area. Staging area must be square footage of field x 0.12, have a minimum access of 15 feet wide by 15 feet high, and, no more than 100 ft from the site. A 25 foot wide by 25 foot long hard or paved clean surface area located within 50 feet of the playing surface shall be provided for purposes of proper mixing of infill material. Access

THE TARKETT SPORTS FAMILY - LEADERS IN SPORTS SURFACING



CURRICULUM ADOPTION

**Gary Community School
Corporation**

Memo

To: Dr. Paige McNulty
From: Kimberley Bradley
cc:
Date: April 13, 2021
Re: ELA Curriculum Adoption

The curriculum team, consisting of instructional coaches, teachers and administrators has reviewed the companies who participated in our book caravan for ELA and we would like to choose McGraw Hill as our next ELA curriculum. McGraw Hill checked 98% of the boxes and was chosen by five out of our eight schools. I have attached the quotes for all three companies. You will find that McGraw Hill comes in slightly under the cost of the other two companies. It has the online component that is easy to use for our students and teachers, it has a wealth of enjoyable and relatable real texts and it embeds SEL into every lesson. It was important to the team that we focused on adopting a book company that had embedded best practices and McGraw Hill fits that requirement. Please see the accompanying documentation. I have included in the attachment, the rubrics that were used to make our choices, the school's choices after reviewing all of the books and data and the quote from McGraw Hill and our other top two choices. Thank you for your consideration.

Kimberley Bradley

Chief Academic Officer

School	Book Company
Banneker	McGraw Hill
Beveridge	McGraw Hill
Glen Park Academy	McGraw Hill
McCullough	Houghton Mifflin Harcourt
Williams	McGraw Hill
Bailly	Pearson
Gary Middle School	McGraw Hill
West Side Leadership Academy	Houghton Mifflin Harcourt

MCGRAW HILL



Because learning changes everything.®

QUOTE PREPARED FOR:

Gary Community School Corp
900 GERRY ST
Gary, IN 46406-2099
ACCOUNT NUMBER: 253573

SUBSCRIPTION/DIGITAL CONTACT:

Kim Bradley
kbradley@garycsc.k12.in.us

CONTACT:

Kim Bradley
kbradley@garycsc.k12.in.us

SALES REP INFORMATION:

Neal McCutcheon
neal.mccutcheon@mheducation.com

Section Summary	Value of All Materials	Free Materials	Product Subtotal
READING WONDERS - GRADE K PREMIUM W/ BIG UNIVERSE (22 STUDENT MATERIALS INCL	\$239,232.84	(\$142,740.84)	\$96,492.00
READING WONDERS - GRADE 1 PREMIUM W/ BIG UNIVERSE	\$294,279.36	(\$165,744.36)	\$128,535.00
READING WONDERS - GRADE 2 PREMIUM W/ BIG UNIVERSE	\$202,520.25	(\$134,729.25)	\$67,791.00
READING WONDERS - GRADE 3 PREMIUM W/ BIG UNIVERSE	\$179,965.44	(\$110,917.44)	\$69,048.00
READING WONDERS - GRADE 4 PREMIUM W/ BIG UNIVERSE	\$150,560.76	(\$97,052.76)	\$53,508.00
READING WONDERS - GRADE 5 PREMIUM W/ BIG UNIVERSE	\$162,879.30	(\$103,443.30)	\$59,436.00
PRODUCT TOTAL*	\$1,229,437.95	(\$754,627.95)	\$474,810.00
ESTIMATED S&H**			\$37,984.80
ESTIMATED TAX**			\$0.00
GRAND TOTAL*			\$512,794.80

* Price firm for 45 days from quote date. Price quote must be attached to school purchase order to receive the quoted price and free materials.

**Shipping and handling charges are not included in the quote total. Actual shipping and handling charges will be applied at time of order. Taxes shown are only estimates. If applicable, actual tax charges will be applied at time of order.

Comments:

PLEASE INCLUDE THIS PROPOSAL WITH YOUR PURCHASE ORDER

SEND ORDER TO:

McGraw Hill LLC | PO Box 182605 | Columbus, OH 43218-2605
Email: orders_mhe@mheducation.com | Phone: 1-800-338-3987 | Fax: 1-800-953-8691

QUOTE DATE: 03/22/2021

ACCOUNT NAME: Gary Community School Corp

EXPIRATION DATE: 05/06/2021

QUOTE NUMBER: ETYNAN-03222021-006

ACCOUNT #: 253573

PAGE #: 1



Because learning changes everything.®

Product Description	ISBN	Qty	Unit Price	Free Materials	Line Subtotal
READING WONDERS - GRADE K PREMIUM W/ BIG UNIVERSE (22 STUDENT MATERIALS INCLUDED PER CLASSROOM)					
READING WONDERS INDIANA PREMIUM PLUS CLASSROOM 6 YR SUBSCRIPTION BUNDLE GRADE K	978-0-07-703677-5	17	\$5,676.00	\$0.00	\$96,492.00
<u>STUDENT MATERIALS INCLUDED IN PACKAGE</u>					
READING WONDERS READING/Writing COMPANION PACKAGE GRADE K	978-0-07-689997-5				
READING WONDERS STUDENT WORKSPACE 6 YEAR SUBSCRIPTION GRADE K	978-0-07-902082-6				
READING WONDERS BIG UNIVERSE STUDENT 6 YEAR SUBSCRIPTION GRADE K-6	978-0-07-700213-8				
READING WONDERS LITERATURE BIG BOOK PACKAGE GRADE K	978-0-07-689794-0				
STUDENT MATERIALS INCLUDED IN PACKAGE Subtotal:				\$0.00	\$0.00
<u>CLASSROOM BOOKS</u>					
READING WONDERS CLASSROOM TRADE BOOK LIBRARY GRADE K	978-0-07-690587-4	17	\$303.33	\$5,156.61	*Free Materials
CLASSROOM BOOKS Subtotal:				\$5,156.61	\$0.00
<u>FREE WITH ORDER OFFER - 1 SET OF THE BELOW MATERIALS FOR EVERY CLASSROOM SET ORDERED</u>					
<u>TEACHER MATERIALS</u>					
READING WONDERS TEACHER EDITION PACKAGE GRADE K	978-0-07-690003-9	17	\$616.59	\$10,482.03	*Free Materials
READING WONDERS TEACHER WORKSPACE 6 YEAR SUBSCRIPTION GRADE K	978-0-07-901646-1	17	\$642.30	\$10,919.10	*Free Materials
READING WONDERS INDIANA SNAP IN TABS GRADE K	978-0-07-700979-3	17	\$150.00	\$2,550.00	*Free Materials
<u>READERS</u>					
READING WONDERS APPROACHING LEVELED READER PACKAGE 6 OF 30 GRADE K	978-0-07-689726-1	17	\$1,015.50	\$17,263.50	*Free Materials
READING WONDERS ON LEVEL LEVELED READER PACKAGE 6 OF 30 GRADE K	978-0-07-689772-8	17	\$1,015.50	\$17,263.50	*Free Materials
READING WONDERS BEYOND LEVELED READER PACKAGE 6 OF 30 GRADE K	978-0-07-689728-5	17	\$1,015.50	\$17,263.50	*Free Materials
READING WONDERS ELL LEVELED READER PACKAGE 6 OF 30 GRADE K	978-0-07-689749-0	17	\$1,015.50	\$17,263.50	*Free Materials
READING WONDERS DECODABLE READERS PACKAGE 6 EACH OF 10 GRADE K	978-0-07-697730-7	17	\$659.13	\$11,205.21	*Free Materials
<u>CLASSROOM MANIPULATIVES</u>					
READING WONDERS WORKSTATION ACTIVITY CARDS PACKAGE GRADE K	978-0-02-119293-9	17	\$205.11	\$3,486.87	*Free Materials
READING WONDERS INSTRUCTIONAL ROUTINE HANDBOOK GRADE K-6	978-0-07-697907-3	17	\$61.20	\$1,040.40	*Free Materials

PLEASE INCLUDE THIS PROPOSAL WITH YOUR PURCHASE ORDER

SEND ORDER TO:

McGraw Hill LLC | PO Box 182605 | Columbus, OH 43218-2605
Email: orders_mhe@mheeducation.com | Phone: 1-800-338-3987 | Fax: 1-800-953-8691

QUOTE DATE: 03/22/2021

ACCOUNT NAME: Gary Community School Corp

EXPIRATION DATE: 05/06/2021

QUOTE NUMBER: ETYNAN-03222021-006

ACCOUNT #: 253573

PAGE #: 2



Because learning changes everything.®

Product Description	ISBN	Qty	Unit Price	Free Materials	Line Subtotal
READING WONDERS NATIONAL PRACTICE BOOK BLM GRADE K	978-0-07-901691-1	17	\$63.36	\$1,077.12	*Free Materials
READING WONDERS VISUAL VOCABULARY CARDS GRADE K	978-0-02-119368-4	17	\$75.93	\$1,290.81	*Free Materials
READING WONDERS GENRE READ ALOUD GRADE K	978-0-07-898219-4	17	\$21.63	\$367.71	*Free Materials
READING WONDERS LEVELED READER LESSON CARDS GRADE K	978-0-07-695364-6	17	\$78.03	\$1,328.51	*Free Materials
READING WONDERS INTERACTIVE READ ALOUD CARDS GRADE K	978-0-07-683971-1	17	\$158.46	\$2,693.82	*Free Materials
READING WONDERS RETELLING CARDS GRADE K	978-0-02-119361-5	17	\$313.23	\$5,324.91	*Free Materials
READING WONDERS HIGH FREQUENCY WORD CARDS GRADE K	978-0-02-119290-8	17	\$66.54	\$1,131.18	*Free Materials
READING WONDERS SOUND SPELLING SMALL CARDS GRADE K-6	978-0-02-119556-5	17	\$67.47	\$1,146.99	*Free Materials
READING WONDERS SOUND SPELLING LARGE CARDS GRADES K-6	978-0-07-676809-7	17	\$166.02	\$2,822.34	*Free Materials
READING WONDERS PHOTO CARDS GRADE K-2	978-0-02-119559-6	17	\$191.85	\$3,261.45	*Free Materials
READING WONDERS ENGLISH LEARNERS NEWCOMER TEACHER GUIDE GRADE K-2	978-0-02-131495-9	17	\$111.45	\$1,894.65	*Free Materials
READING WONDERS ENGLISH LEARNERS NEWCOMER CARDS GRADES K-2	978-0-07-660148-0	17	\$106.92	\$1,817.64	*Free Materials
ASSESSMENTS					
READING WONDERS UNIT ASSESSMENT GRADE K	978-0-07-901753-6	17	\$117.81	\$2,002.77	*Free Materials
READING WONDERS BENCHMARK ASSESSMENT GRADE K	978-0-07-906841-1	17	\$71.16	\$1,209.72	*Free Materials
READING WONDERS PLACEMENT AND DIAGNOSTIC ASSESSMENT GRADE K-5	978-0-07-901764-2	17	\$87.00	\$1,479.00	*Free Materials
FREE WITH ORDER OFFER - 1 SET OF THE BELOW MATERIALS FOR EVERY CLASSROOM SET ORDERED				Subtotal:	\$0.00
*PREMIUM W/ BIG UNIVERSE (22 STUDENT MATERIALS INCLUDED PER CLASSROOM PACKAGE ORDERED)				Subtotal:	\$142,740.84
					\$96,492.00

PLEASE INCLUDE THIS PROPOSAL WITH YOUR PURCHASE ORDER

SEND ORDER TO:

McGraw Hill LLC | PO Box 182605 | Columbus, OH 43218-2605
Email: orders_mhe@mheducation.com | Phone: 1-800-338-3987 | Fax: 1-800-953-8691

QUOTE DATE: 03/22/2021

ACCOUNT NAME: Gary Community School Corp

EXPIRATION DATE: 05/06/2021

QUOTE NUMBER: ETYNAN-03222021-006

ACCOUNT #: 253573

PAGE #: 3



Because learning changes everything.®

Product Description	ISBN	Qty	Unit Price	Free Materials	Line Subtotal
READING WONDERS - GRADE 1 PREMIUM W/ BIG UNIVERSE					
READING WONDERS INDIANA PREMIUM PLUS CLASSROOM 6 YR SUBSCRIPTION BUNDLE GRADE 1	978-0-07-703678-2	451	\$285.00	\$0.00	\$128,535.00
STUDENT MATERIALS INCLUDED IN PACKAGE					
READING WONDERS READING/Writing COMPANION PACKAGE GRADE 1	978-0-07-689998-2				
READING WONDERS LITERATURE ANTHOLOGY PACKAGE GRADE 1	978-0-07-689792-6				
READING WONDERS STUDENT WORKSPACE 6 YEAR SUBSCRIPTION GRADE 1	978-0-07-901628-7				
READING WONDERS BIG UNIVERSE STUDENT 6 YEAR SUBSCRIPTION GRADE K-6	978-0-07-700213-8				
STUDENT MATERIALS INCLUDED IN PACKAGE Subtotal:				\$0.00	\$0.00
CLASSROOM BOOKS					
READING WONDERS LITERATURE BIG BOOKS PACKAGE GRADE 1	978-0-02-119524-4	18	\$915.87	\$16,485.66	*Free Materials
READING WONDERS CLASSROOM TRADE BOOK LIBRARY GRADE 1	978-0-07-690588-1	18	\$303.33	\$5,459.94	*Free Materials
CLASSROOM BOOKS Subtotal:				\$21,945.60	\$0.00
FREE WITH ORDER OFFER - 1 SET OF THE BELOW MATERIALS FOR EVERY CLASSROOM SET ORDERED					
TEACHER MATERIALS					
READING WONDERS TEACHER EDITION PACKAGE GRADE 1	978-0-07-690004-6	18	\$616.59	\$11,098.62	*Free Materials
READING WONDERS TEACHER WORKSPACE 6 YEAR SUBSCRIPTION GRADE 1	978-0-07-901647-8	18	\$642.30	\$11,561.40	*Free Materials
READING WONDERS INDIANA SNAP IN TABS GRADE 1	978-0-07-700958-8	18	\$150.00	\$2,700.00	*Free Materials
READERS					
READING WONDERS APPROACHING LEVEL READER PACKAGE 6 OF 30 GRADE 1	978-0-07-689791-9	18	\$1,015.50	\$18,279.00	*Free Materials
READING WONDERS ON LEVEL LEVELED READER PACKAGE 6 OF 30 GRADE 1	978-0-07-689774-2	18	\$1,015.50	\$18,279.00	*Free Materials
READING WONDERS BEYOND LEVELED READER PACKAGE 6 OF 30 GRADE 1	978-0-07-689732-2	18	\$1,015.50	\$18,279.00	*Free Materials
READING WONDERS ELL LEVELED READER PACKAGE 6 OF 30 GRADE 1	978-0-07-689751-3	18	\$1,015.50	\$18,279.00	*Free Materials
READING WONDERS DECODABLE READERS PACKAGE 6 EACH OF 6 GRADE 1	978-0-07-697732-1	18	\$421.35	\$7,584.30	*Free Materials

PLEASE INCLUDE THIS PROPOSAL WITH YOUR PURCHASE ORDER

SEND ORDER TO:

McGraw Hill LLC | PO Box 182605 | Columbus, OH 43218-2605
Email: orders_mhe@mheducation.com | Phone: 1-800-338-3987 | Fax: 1-800-953-8691

QUOTE DATE: 03/22/2021

ACCOUNT NAME: Gary Community School Corp

EXPIRATION DATE: 05/06/2021

QUOTE NUMBER: ETYNAN-03222021-006

ACCOUNT #: 253573

PAGE #: 4



Because learning changes everything.®

Product Description	ISBN	Qty	Unit Price	Free Materials	Line Subtotal
CLASSROOM MANIPULATIVES					
READING WONDERS WORKSTATION ACTIVITY CARDS PACKAGE GRADE 1	978-0-02-119521-3	18	\$205.11	\$3,691.98	*Free Materials
READING WONDERS INSTRUCTIONAL ROUTINE HANDBOOK GRADE K-6	978-0-07-697907-3	18	\$61.20	\$1,101.60	*Free Materials
READING WONDERS NATIONAL PRACTICE BOOK BLM GRADE 1	978-0-07-901694-2	18	\$63.36	\$1,140.48	*Free Materials
READING WONDERS VISUAL VOCABULARY CARDS GRADE 1	978-0-02-119537-4	18	\$75.93	\$1,366.74	*Free Materials
READING WONDERS GENRE READ ALOUD GRADE 1	978-0-07-698220-0	18	\$52.53	\$945.54	*Free Materials
READING WONDERS LEVELED READER LESSON CARDS GRADE 1	978-0-07-695365-3	18	\$78.03	\$1,404.54	*Free Materials
READING WONDERS INTERACTIVE READ ALOUD CARDS GRADE 1	978-0-07-663974-2	18	\$136.41	\$2,455.38	*Free Materials
READING WONDERS RETELLING CARDS GRADE 1	978-0-07-901782-6	18	\$310.20	\$5,583.60	*Free Materials
READING WONDERS HIGH FREQUENCY WORD CARDS GRADE 1	978-0-02-119558-9	18	\$134.25	\$2,416.50	*Free Materials
READING WONDERS SOUND SPELLING SMALL CARDS GRADE K-6	978-0-02-119556-5	18	\$67.47	\$1,214.46	*Free Materials
READING WONDERS SOUND SPELLING LARGE CARDS GRADES K-6	978-0-07-676809-7	18	\$166.02	\$2,988.36	*Free Materials
READING WONDERS PHOTO CARDS GRADE K-2	978-0-02-119559-6	18	\$191.85	\$3,453.30	*Free Materials
READING WONDERS ENGLISH LEARNERS NEWCOMER TEACHER GUIDE GRADE K-2	978-0-02-131495-9	18	\$111.45	\$2,006.10	*Free Materials
READING WONDERS ENGLISH LEARNERS NEWCOMER CARDS GRADES K-2	978-0-07-680148-0	18	\$106.92	\$1,924.56	*Free Materials
ASSESSMENTS					
READING WONDERS UNIT ASSESSMENT GRADE 1	978-0-07-901756-7	18	\$117.81	\$2,120.58	*Free Materials
READING WONDERS PROGRESS MONITORING ASSESSMENT GRADE 1	978-0-07-901701-7	18	\$59.86	\$1,077.84	*Free Materials
READING WONDERS BENCHMARK ASSESSMENT GRADE 1	978-0-07-906642-8	18	\$71.16	\$1,280.88	*Free Materials
READING WONDERS PLACEMENT AND DIAGNOSTIC ASSESSMENT GRADE K-5	978-0-07-901764-2	18	\$67.00	\$1,566.00	*Free Materials
FREE WITH ORDER OFFER - 1 SET OF THE BELOW MATERIALS FOR EVERY CLASSROOM SET ORDERED Subtotal:				\$143,798.76	\$0.00
READING WONDERS - GRADE 1 PREMIUM W/ BIG UNIVERSE Subtotal:				\$165,744.36	\$126,635.00

PLEASE INCLUDE THIS PROPOSAL WITH YOUR PURCHASE ORDER

SEND ORDER TO:

McGraw Hill LLC | PO Box 182605 | Columbus, OH 43218-2605
Email: orders_mhe@mheducation.com | Phone: 1-800-338-3987 | Fax: 1-800-953-8691

QUOTE DATE: 03/22/2021
QUOTE NUMBER: ETYNAN-03222021-006

ACCOUNT NAME: Gary Community School Corp
ACCOUNT #: 253573

EXPIRATION DATE: 05/06/2021
PAGE #: 5



Because learning changes everything.®

Product Description	ISBN	Qty	Unit Price	Free Materials	Line Subtotal
READING WONDERS - GRADE 2 PREMIUM W/ BIG UNIVERSE					
READING WONDERS INDIANA PREMIUM PLUS CLASSROOM 6 YR SUBSCRIPTION BUNDLE GRADE 2	978-0-07-703679-9	383	\$177.00	\$0.00	\$67,791.00
STUDENT MATERIALS INCLUDED IN PACKAGE					
READING WONDERS READING/Writing COMPANION PACKAGE GRADE 2	978-0-07-689999-9				
READING WONDERS LITERATURE ANTHOLOGY GRADE 2	978-0-07-901815-1				
READING WONDERS STUDENT WORKSPACE 6 YEAR SUBSCRIPTION GRADE 2	978-0-07-901629-4				
READING WONDERS BIG UNIVERSE STUDENT 6 YEAR SUBSCRIPTION GRADE K-6	978-0-07-700213-8				
STUDENT MATERIALS INCLUDED IN PACKAGE Subtotal:				\$0.00	\$0.00
CLASSROOM BOOKS					
READING WONDERS CLASSROOM TRADE BOOK LIBRARY GRADE 2	978-0-07-690589-8	17	\$303.33	\$5,156.61	*Free Materials
CLASSROOM BOOKS Subtotal:				\$5,156.61	\$0.00
FREE WITH ORDER OFFER - 1 SET OF THE BELOW MATERIALS FOR EVERY CLASSROOM SET ORDERED					
TEACHER MATERIALS					
READING WONDERS TEACHER EDITION PACKAGE GRADE 2	978-0-07-690005-3	17	\$616.59	\$10,482.03	*Free Materials
READING WONDERS TEACHER WORKSPACE 6 YEAR SUBSCRIPTION GRADE 2	978-0-07-901649-2	17	\$642.30	\$10,919.10	*Free Materials
READING WONDERS INDIANA SNAP IN TABS GRADE 2	978-0-07-700982-5	17	\$150.00	\$2,550.00	*Free Materials
READERS					
READING WONDERS APPROACHING LEVELED READER PACKAGE 6 OF 30 GRADE 2	978-0-07-689758-2	17	\$1,015.50	\$17,263.50	*Free Materials
READING WONDERS ON LEVEL LEVELED READER PACKAGE 6 OF 30 GRADE 2	978-0-07-689777-3	17	\$1,015.50	\$17,263.50	*Free Materials
READING WONDERS BEYOND LEVELED READER PACKAGE 6 OF 30 GRADE 2	978-0-07-689736-0	17	\$1,015.50	\$17,263.50	*Free Materials
READING WONDERS ELL LEVELED READER PACKAGE 6 OF 30 GRADE 2	978-0-07-689755-1	17	\$1,015.50	\$17,263.50	*Free Materials
READING WONDERS DECODABLE READER PACKAGE 6 OF 6 GRADE 2	978-0-07-666171-8	17	\$430.35	\$7,315.95	*Free Materials
CLASSROOM MANIPULATIVES					
READING WONDERS WORKSTATION ACTIVITY CARDS PACKAGE GRADE 2	978-0-02-118699-0	17	\$205.11	\$3,486.87	*Free Materials
READING WONDERS INSTRUCTIONAL ROUTINE HANDBOOK GRADE K-6	978-0-07-697907-3	17	\$61.20	\$1,040.40	*Free Materials

PLEASE INCLUDE THIS PROPOSAL WITH YOUR PURCHASE ORDER

SEND ORDER TO:

McGraw Hill LLC | PO Box 182605 | Columbus, OH 43218-2605
Email: orders_mhe@mheducation.com | Phone: 1-800-338-3987 | Fax: 1-800-953-8691

QUOTE DATE: 03/22/2021

ACCOUNT NAME: Gary Community School Corp

EXPIRATION DATE: 05/06/2021

QUOTE NUMBER: ETYNAN-03222021-006

ACCOUNT #: 253573

PAGE #: 6



Because learning changes everything.®

Product Description	ISBN	Qty	Unit Price	Free Materials	Line Subtotal
READING WONDERS NATIONAL PRACTICE BOOK BLM GRADE 2	978-0-07-901695-9	17	\$63.36	\$1,077.12	*Free Materials
READING WONDERS VISUAL VOCABULARY CARDS GRADE 2	978-0-07-683976-6	17	\$75.18	\$1,278.06	*Free Materials
READING WONDERS - LEVELED READER LESSON CARDS GRADE 2	978-0-02-129206-6	17	\$78.84	\$1,340.28	*Free Materials
READING WONDERS INTERACTIVE READ ALOUD CARDS GRADE 2	978-0-07-683975-9	17	\$136.41	\$2,318.97	*Free Materials
READING WONDERS HIGH FREQUENCY WORD CARDS GRADE 2	978-0-02-119022-5	17	\$134.25	\$2,282.25	*Free Materials
READING WONDERS SOUND SPELLING LARGE CARDS GRADES K-6	978-0-07-676809-7	17	\$166.02	\$2,822.34	*Free Materials
READING WONDERS SOUND SPELLING SMALL CARDS GRADE K-6	978-0-02-119556-5	17	\$67.47	\$1,146.99	*Free Materials
READING WONDERS PHOTO CARDS GRADE K-2	978-0-02-119559-6	17	\$191.65	\$3,261.45	*Free Materials
READING WONDERS ENGLISH LEARNERS NEWCOMER TEACHER GUIDE GRADE 3-6	978-0-02-132644-0	17	\$111.45	\$1,894.65	*Free Materials
READING WONDERS ENGLISH LEARNERS NEWCOMER CARDS GRADES 3-6	978-0-07-680149-7	17	\$108.92	\$1,817.64	*Free Materials
ASSESSMENT					
READING WONDERS UNIT ASSESSMENT GRADE 2	978-0-07-901757-4	17	\$96.18	\$1,635.06	*Free Materials
READING WONDERS PROGRESS MONITORING ASSESSMENT GRADE 2	978-0-07-901747-5	17	\$59.88	\$1,017.96	*Free Materials
READING WONDERS PLACEMENT AND DIAGNOSTIC ASSESSMENT GRADE K-5	978-0-07-901764-2	17	\$87.00	\$1,479.00	*Free Materials
READING WONDERS BENCHMARK ASSESSMENT GRADE 2	978-0-07-906643-5	17	\$79.56	\$1,352.52	*Free Materials
FREE WITH ORDER OFFER - 1 SET OF THE BELOW MATERIALS FOR EVERY CLASSROOM SET ORDERED				Subtotal:	\$0.00
READING WONDERS - GRADE 2 PREMIUM W/ BIG UNIVERSE				Subtotal:	\$67,791.00

PLEASE INCLUDE THIS PROPOSAL WITH YOUR PURCHASE ORDER

SEND ORDER TO:

McGraw Hill LLC | PO Box 182605 | Columbus, OH 43218-2605
Email: orders_mh@mheducation.com | Phone: 1-800-338-3987 | Fax: 1-800-953-8691

QUOTE DATE: 03/22/2021

ACCOUNT NAME: Gary Community School Corp

EXPIRATION DATE: 05/06/2021

QUOTE NUMBER: ETYNAN-03222021-006

ACCOUNT #: 253573

PAGE #: 7





Because learning changes everything.®

Product Description	ISBN	Qty	Unit Price	Free Materials	Line Subtotal
READING WONDERS - GRADE 3 PREMIUM W/ BIG UNIVERSE					
READING WONDERS INDIANA PREMIUM PLUS CLASSROOM 6 YR SUBSCRIPTION BUNDLE GRADE 3	978-0-07-703682-9	411	\$168.00	\$0.00	\$69,048.00
STUDENT MATERIALS INCLUDED IN PACKAGE					
READING WONDERS READING/Writing COMPANION PACKAGE GRADE 3	978-0-07-690000-8				
READING WONDERS LITERATURE ANTHOLOGY GRADE 3	978-0-07-901819-9				
READING WONDERS STUDENT WORKSPACE 6 YEAR SUBSCRIPTION GRADE 3	978-0-07-901631-7				
READING WONDERS BIG UNIVERSE STUDENT 6 YEAR SUBSCRIPTION GRADE K-6	978-0-07-700213-8				
STUDENT MATERIALS INCLUDED IN PACKAGE Subtotal:				\$0.00	\$0.00
CLASSROOM BOOKS					
READING WONDERS CLASSROOM TRADE BOOK LIBRARY GRADE 3	978-0-07-690592-8	16	\$303.33	\$4,853.28	*Free Materials
CLASSROOM BOOKS Subtotal:				\$4,853.28	\$0.00
FREE WITH ORDER OFFER - 1 SET OF THE BELOW MATERIALS FOR EVERY CLASSROOM SET ORDERED					
TEACHER MATERIALS					
READING WONDERS TEACHER EDITION PACKAGE GRADE 3	978-0-07-690006-0	16	\$616.59	\$9,865.44	*Free Materials
READING WONDERS TEACHER WORKSPACE 6 YEAR SUBSCRIPTION GRADE 3	978-0-07-901650-8	16	\$642.30	\$10,276.80	*Free Materials
READING WONDERS INDIANA SNAP IN TABS GRADE 3	978-0-07-700966-3	16	\$150.00	\$2,400.00	*Free Materials
READERS					
READING WONDERS APPROACHING LEVELED READER PACKAGE 6 OF 30 GRADE 3	978-0-07-689762-9	16	\$1,015.50	\$16,248.00	*Free Materials
READING WONDERS ON LEVEL LEVELED READER PACKAGE 6 OF 30 GRADE 3	978-0-07-689781-0	16	\$1,015.50	\$16,248.00	*Free Materials
READING WONDERS BEYOND LEVELED READER PACKAGE 6 OF 30 GRADE 3	978-0-07-689738-4	16	\$1,015.50	\$16,248.00	*Free Materials
READING WONDERS ELL LEVELED READER PACKAGE 6 OF 30 GRADE 3	978-0-07-689715-5	16	\$1,015.50	\$16,248.00	*Free Materials
CLASSROOM MANIPULATIVES					
READING WONDERS WORKSTATION ACTIVITY CARDS PACKAGE GRADE 3	978-0-02-119164-2	16	\$205.11	\$3,281.76	*Free Materials
READING WONDERS INSTRUCTIONAL ROUTINE HANDBOOK GRADE K-6	978-0-07-697907-3	16	\$61.20	\$979.20	*Free Materials
READING WONDERS NATIONAL PRACTICE BOOK BLM GRADE 3	978-0-07-901696-6	16	\$63.36	\$1,013.76	*Free Materials
READING WONDERS VISUAL VOCABULARY CARDS GRADE 3	978-0-07-683979-7	16	\$75.18	\$1,202.88	*Free Materials

PLEASE INCLUDE THIS PROPOSAL WITH YOUR PURCHASE ORDER

SEND ORDER TO:

McGraw Hill LLC | PO Box 182605 | Columbus, OH 43218-2605
Email: orders_mhe@mheducation.com | Phone: 1-800-338-3987 | Fax: 1-800-953-8691

QUOTE DATE: 03/22/2021

ACCOUNT NAME: Gary Community School Corp

EXPIRATION DATE: 05/06/2021

QUOTE NUMBER: ETYNAN-03222021-006

ACCOUNT #: 253573

PAGE #: 8



Because learning changes everything.®

Product Description	ISBN	Qty	Unit Price	Free Materials	Line Subtotal
READING WONDERS LEVELED READER LESSON CARDS GRADE 3	978-0-07-695368-4	16	\$76.03	\$1,248.48	*Free Materials
READING WONDERS HIGH FREQUENCY WORD CARDS GRADE 3-6	978-0-02-118820-8	16	\$134.25	\$2,148.00	*Free Materials
READING WONDERS ENGLISH LEARNERS NEWCOMER TEACHER GUIDE GRADE 3-6	978-0-02-132644-0	16	\$111.45	\$1,783.20	*Free Materials
READING WONDERS ENGLISH LEARNERS NEWCOMER CARDS GRADES 3-6	978-0-07-680149-7	16	\$106.92	\$1,710.72	*Free Materials
ASSESSMENT					
READING WONDERS UNIT ASSESSMENT GRADE 3	978-0-07-901758-1	16	\$96.18	\$1,538.88	*Free Materials
READING WONDERS PROGRESS MONITORING ASSESSMENT GRADE 3	978-0-07-901748-2	16	\$59.88	\$958.08	*Free Materials
READING WONDERS BENCHMARK ASSESSMENT GRADE 3	978-0-07-906644-2	16	\$79.56	\$1,272.96	*Free Materials
READING WONDERS PLACEMENT AND DIAGNOSTIC ASSESSMENT GRADE K-5	978-0-07-901764-2	16	\$87.00	\$1,392.00	*Free Materials
FREE WITH ORDER OFFER - 1 SET OF THE BELOW MATERIALS FOR EVERY CLASSROOM SET ORDERED				Subtotal:	\$106,064.16
					\$0.00
READING WONDERS - GRADE 3 PREMIUM W/ BIG UNIVERSE				Subtotal:	\$110,917.44
					\$69,048.00

PLEASE INCLUDE THIS PROPOSAL WITH YOUR PURCHASE ORDER

SEND ORDER TO:

McGraw Hill LLC | PO Box 182605 | Columbus, OH 43218-2605
Email: orders_mhe@mheducation.com | Phone: 1-800-338-3987 | Fax: 1-800-953-8691

QUOTE DATE: 03/22/2021
QUOTE NUMBER: ETYNAN-03222021-006

ACCOUNT NAME: Gary Community School Corp
ACCOUNT #: 253573

EXPIRATION DATE: 05/06/2021
PAGE #: 9





Because learning changes everything.®

Product Description	ISBN	Qty	Unit Price	Free Materials	Line Subtotal
READING WONDERS - GRADE 4 PREMIUM W/ BIG UNIVERSE					
READING WONDERS INDIANA PREMIUM PLUS CLASSROOM 6 YR SUBSCRIPTION BUNDLE GRADE 4	978-0-07-703683-6	343	\$156.00	\$0.00	\$53,508.00
STUDENT MATERIALS INCLUDED IN PACKAGE					
READING WONDERS READING/Writing COMPANION PACKAGE GRADE 4	978-0-07-690001-5				
READING WONDERS LITERATURE ANTHOLOGY GRADE 4	978-0-07-901823-6				
READING WONDERS STUDENT WORKSPACE 6 YEAR SUBSCRIPTION GRADE 4	978-0-07-901788-8				
READING WONDERS BIG UNIVERSE STUDENT 6 YEAR SUBSCRIPTION GRADE K-6	978-0-07-700213-8				
STUDENT MATERIALS INCLUDED IN PACKAGE Subtotal:				\$0.00	\$0.00
CLASSROOM BOOKS					
READING WONDERS CLASSROOM TRADE BOOK LIBRARY GRADE 4	978-0-07-690593-5	14	\$303.33	\$4,246.62	*Free Materials
CLASSROOM BOOKS Subtotal:				\$4,246.62	\$0.00
FREE WITH ORDER OFFER - 1 SET OF THE BELOW MATERIALS FOR EVERY CLASSROOM SET ORDERED					
TEACHER MATERIALS					
READING WONDERS TEACHER EDITION PACKAGE GRADE 4	978-0-07-690007-7	14	\$616.59	\$8,632.26	*Free Materials
READING WONDERS TEACHER WORKSPACE 6 YEAR SUBSCRIPTION GRADE 4	978-0-07-901653-9	14	\$642.30	\$8,992.20	*Free Materials
READING WONDERS INDIANA SNAP IN TABS GRADE 4	978-0-07-700970-0	14	\$150.00	\$2,100.00	*Free Materials
READERS					
READING WONDERS APPROACHING LEVELED READER PACKAGE 6 OF 30 GRADE 4	978-0-07-689764-3	14	\$1,015.50	\$14,217.00	*Free Materials
READING WONDERS ON LEVEL LEVELED READER PACKAGE 6 OF 30 GRADE 4	978-0-07-689785-8	14	\$1,015.50	\$14,217.00	*Free Materials
READING WONDERS BEYOND LEVELED READER PACKAGE 6 OF 30 GRADE 4	978-0-07-689741-4	14	\$1,015.50	\$14,217.00	*Free Materials
READING WONDERS ELL LEVELED READER PACKAGE 6 OF 30 GRADE 4	978-0-07-689719-3	14	\$1,015.50	\$14,217.00	*Free Materials
CLASSROOM MANIPULATIVES					
READING WONDERS WORKSTATION ACTIVITY CARDS PACKAGE GRADE 4	978-0-02-118695-2	14	\$205.11	\$2,871.54	*Free Materials
READING WONDERS INSTRUCTIONAL ROUTINE HANDBOOK GRADE K-6	978-0-07-697907-3	14	\$61.20	\$856.80	*Free Materials
READING WONDERS NATIONAL PRACTICE BOOK BLM GRADE 4	978-0-07-901699-7	14	\$63.36	\$887.04	*Free Materials
READING WONDERS VISUAL VOCABULARY CARDS GRADE 4	978-0-07-683980-3	14	\$75.16	\$1,052.52	*Free Materials

PLEASE INCLUDE THIS PROPOSAL WITH YOUR PURCHASE ORDER

SEND ORDER TO:

McGraw Hill LLC | PO Box 182605 | Columbus, OH 43218-2605
Email: orders_mhe@mheducation.com | Phone: 1-800-338-3987 | Fax: 1-800-953-8691

QUOTE DATE: 03/22/2021

ACCOUNT NAME: Gary Community School Corp

EXPIRATION DATE: 05/08/2021

QUOTE NUMBER: ETYNAN-03222021-006

ACCOUNT #: 253573

PAGE #: 10



Because learning changes everything.®

Product Description	ISBN	Qty	Unit Price	Free Materials	Line Subtotal
READING WONDERS LEVELED READER LESSON CARDS GRADE 4	978-0-07-695369-1	14	\$78.03	\$1,092.42	*Free Materials
READING WONDERS HIGH FREQUENCY WORD CARDS GRADE 3-6	978-0-02-118820-8	14	\$134.25	\$1,879.50	*Free Materials
READING WONDERS ENGLISH LEARNERS NEWCOMER TEACHER GUIDE GRADE 3-6	978-0-02-132644-0	14	\$111.45	\$1,560.30	*Free Materials
READING WONDERS ENGLISH LEARNERS NEWCOMER CARDS GRADES 3-6	978-0-07-680149-7	14	\$106.92	\$1,496.88	*Free Materials
ASSESSMENT					
READING WONDERS UNIT ASSESSMENT GRADE 4	978-0-07-901760-4	14	\$96.18	\$1,346.52	*Free Materials
READING WONDERS PROGRESS MONITORING ASSESSMENT GRADE 4	978-0-07-901751-2	14	\$59.88	\$838.32	*Free Materials
READING WONDERS BENCHMARK ASSESSMENT GRADE 4	978-0-07-906645-9	14	\$79.56	\$1,113.84	*Free Materials
READING WONDERS PLACEMENT AND DIAGNOSTIC ASSESSMENT GRADE K-5	978-0-07-901764-2	14	\$87.00	\$1,218.00	*Free Materials
FREE WITH ORDER OFFER - 1 SET OF THE BELOW MATERIALS FOR EVERY CLASSROOM SET ORDERED				Subtotal:	\$0.00
READING WONDERS - GRADE 4 PREMIUM W/ BIG UNIVERSE				Subtotal:	\$53,508.00

PLEASE INCLUDE THIS PROPOSAL WITH YOUR PURCHASE ORDER

SEND ORDER TO:

McGraw Hill LLC | PO Box 182605 | Columbus, OH 43218-2605
Email: orders_mhe@mheducation.com | Phone: 1-800-338-3987 | Fax: 1-800-953-8691

QUOTE DATE: 03/22/2021

ACCOUNT NAME: Gary Community School Corp

EXPIRATION DATE: 05/06/2021

QUOTE NUMBER: ETYNAN-03222021-006

ACCOUNT #: 253573

PAGE #: 11





Because learning changes everything.®

Product Description	ISBN	Qty	Unit Price	Free Materials	Line Subtotal
READING WONDERS - GRADE 5 PREMIUM W/ BIG UNIVERSE					
READING WONDERS INDIANA PREMIUM PLUS CLASSROOM 6 YR SUBSCRIPTION BUNDLE GRADE 5	978-0-07-703884-3	381	\$156.00	\$0.00	\$59,436.00
STUDENT MATERIALS INCLUDED IN PACKAGE					
READING WONDERS READING/Writing COMPANION PACKAGE GRADE 5	978-0-07-690002-2				
READING WONDERS LITERATURE ANTHOLOGY GRADE 5	978-0-07-901828-1				
READING WONDERS STUDENT WORKSPACE 6 YEAR SUBSCRIPTION GRADE 5	978-0-07-901789-5				
READING WONDERS BIG UNIVERSE STUDENT 6 YEAR SUBSCRIPTION GRADE K-6	978-0-07-700213-8				
STUDENT MATERIALS INCLUDED IN PACKAGE Subtotal:				\$0.00	\$0.00
CLASSROOM BOOKS					
READING WONDERS CLASSROOM TRADE BOOK LIBRARY GRADE 5	978-0-07-690594-2	15	\$303.33	\$4,549.95	*Free Materials
CLASSROOM BOOKS Subtotal:				\$4,549.95	\$0.00
FREE WITH ORDER OFFER - 1 SET OF THE BELOW MATERIALS FOR EVERY CLASSROOM SET ORDERED					
TEACHER MATERIALS					
READING WONDERS TEACHER EDITION PACKAGE GRADE 5	978-0-07-690008-4	15	\$618.59	\$9,248.85	*Free Materials
READING WONDERS TEACHER WORKSPACE 6 YEAR SUBSCRIPTION GRADE 5	978-0-07-901654-6	15	\$642.30	\$9,634.50	*Free Materials
READING WONDERS INDIANA SNAP IN TABS GRADE 5	978-0-07-700975-5	15	\$150.00	\$2,250.00	*Free Materials
READERS					
READING WONDERS APPROACHING LEVELED READER PACKAGE 6 OF 30 GRADE 5	978-0-07-689768-1	15	\$1,015.50	\$15,232.50	*Free Materials
READING WONDERS ON LEVEL LEVELED READER PACKAGE 6 OF 30 GRADE 5	978-0-07-689787-2	15	\$1,015.50	\$15,232.50	*Free Materials
READING WONDERS BEYOND LEVELED READER PACKAGE 6 OF 30 GRADE 5	978-0-07-689745-2	15	\$1,015.50	\$15,232.50	*Free Materials
READING WONDERS ELL LEVELED READER PACKAGE 6 OF 30 GRADE 5	978-0-07-689722-3	15	\$1,015.50	\$15,232.50	*Free Materials
CLASSROOM MANIPULATIVES					
READING WONDERS WORKSTATION ACTIVITY CARDS PACKAGE GRADE 5	978-0-02-119325-7	15	\$205.11	\$3,076.65	*Free Materials
READING WONDERS INSTRUCTIONAL ROUTINE HANDBOOK GRADE K-6	978-0-07-697907-3	15	\$61.20	\$918.00	*Free Materials
READING WONDERS NATIONAL PRACTICE BOOK BLM GRADE 5	978-0-07-901700-0	15	\$63.36	\$950.40	*Free Materials
READING WONDERS VISUAL VOCABULARY CARDS GRADE 5	978-0-07-683981-0	15	\$74.67	\$1,120.05	*Free Materials

PLEASE INCLUDE THIS PROPOSAL WITH YOUR PURCHASE ORDER

SEND ORDER TO:

McGraw Hill LLC | PO Box 182605 | Columbus, OH 43218-2605
Email: orders_mhe@mheducation.com | Phone: 1-800-338-3987 | Fax: 1-800-953-8691

QUOTE DATE: 03/22/2021

ACCOUNT NAME: Gary Community School Corp

EXPIRATION DATE: 05/06/2021

QUOTE NUMBER: ETYNAN-03222021-006

ACCOUNT #: 253573

PAGE #: 12



Because learning changes everything.®

Product Description	ISBN	Qty	Unit Price	Free Materials	Line Subtotal
READING WONDERS LEVELED READER LESSON CARDS GRADE 5	978-0-07-695372-1	15	\$78.03	\$1,170.45	*Free Materials
READING WONDERS HIGH FREQUENCY WORD CARDS GRADE 3-6	978-0-02-118820-8	15	\$134.25	\$2,013.75	*Free Materials
READING WONDERS ENGLISH LEARNERS NEWCOMER TEACHER GUIDE GRADE 3-6	978-0-02-132644-0	15	\$111.45	\$1,671.75	*Free Materials
READING WONDERS ENGLISH LEARNERS NEWCOMER CARDS GRADES 3-6	978-0-07-680149-7	15	\$106.92	\$1,603.80	*Free Materials
ASSESSMENTS					
READING WONDERS UNIT ASSESSMENT GRADE 5	978-0-07-901761-1	15	\$60.57	\$908.55	*Free Materials
READING WONDERS PROGRESS MONITORING ASSESSMENT GRADE 5	978-0-07-901752-9	15	\$59.88	\$898.20	*Free Materials
READING WONDERS BENCHMARK ASSESSMENT GRADE 5	978-0-07-906648-6	15	\$79.56	\$1,193.40	*Free Materials
READING WONDERS PLACEMENT AND DIAGNOSTIC ASSESSMENT GRADE K-5	978-0-07-901764-2	15	\$87.00	\$1,305.00	*Free Materials
FREE WITH ORDER OFFER - 1 SET OF THE BELOW MATERIALS FOR EVERY CLASSROOM SET ORDERED Subtotal:				\$98,893.35	\$0.00
READING WONDERS - GRADE 5 PREMIUM W/ BIG UNIVERSE Subtotal:				\$103,443.30	\$59,436.00

PLEASE INCLUDE THIS PROPOSAL WITH YOUR PURCHASE ORDER

SEND ORDER TO:

McGraw Hill LLC | PO Box 182605 | Columbus, OH 43218-2605
Email: orders_mha@mheducation.com | Phone: 1-800-338-3987 | Fax: 1-800-953-8691

QUOTE DATE: 03/22/2021
QUOTE NUMBER: ETYNAN-03222021-006

ACCOUNT NAME: Gary Community School Corp
ACCOUNT #: 253573

EXPIRATION DATE: 05/06/2021
PAGE #: 13





Because learning changes everything.®

QUOTE PREPARED FOR:

Gary Community School Corp
900 GERRY ST
Gary, IN 46406-2099
ACCOUNT NUMBER: 253573

CONTACT:

Kim Bradley
kbradley@garycsc.k12.in.us

VALUE OF ALL MATERIALS	\$1,229,437.95
FREE MATERIALS	(\$754,627.95)
PRODUCT TOTAL*	\$474,810.00
ESTIMATED SHIPPING & HANDLING**	\$37,984.80
ESTIMATED TAX**	\$0.00
GRAND TOTAL	\$512,794.80

SUBSCRIPTION/DIGITAL CONTACT:

Kim Bradley
kbradley@garycsc.k12.in.us

Comments:

* Price firm for 45 days from quote date. Price quote must be attached to school purchase order to receive the quoted price and free materials.

**Shipping and handling charges are not included in the quote total. Actual shipping and handling charges will be applied at time of order. Taxes shown are only estimates. If applicable, actual tax charges will be applied at time of order.

Terms of Service:

By placing an order for digital products (the 'Subscribed Materials'), the entity that this price quote has been prepared for ('Subscriber') agrees to be bound by the Terms of Service and any specific provisions required by Subscriber's state law, each located in the applicable links below. Subject to Subscriber's payment of the fees set out above, McGraw Hill LLC hereby grants to Subscriber a non-exclusive, non-transferable license to allow only the number of Authorized Users that corresponds to the quantity of Subscribed Materials set forth above to access and use the Subscribed Materials under the terms described in the Terms of Service and any specific provisions required by Subscriber's state law, each located in the applicable links below. The subscription term for the Subscribed Materials shall be as set forth in the Product Description above. If no subscription term is specified, the initial term shall be one (1) year from the date of this price quote (the 'Initial Subscription Term'), and thereafter the Subscriber shall renew for additional one (1) year terms (each a 'Subscription Renewal Term'), provided MHE has chosen to renew the subscription and has sent an invoice for such Subscription Renewal Term to Subscriber.

[Terms Of Service](#)

[Provisions required by Subscriber State law](#)

ATTENTION: In our effort to protect our customer's data, we will no longer store credit card data in any manner within our system. Therefore, as of April 30, 2016 we will no longer accept credit card orders via email, fax, or mail/package delivery. Credit card orders may be placed over the phone by calling the number listed above or via our websites by visiting www.mheducation.com (or www.mhcoast2coast.com).

School Purchase Order Number: _____

Name of School Official (Please Print)

Signature of School Official

PLEASE INCLUDE THIS PROPOSAL WITH YOUR PURCHASE ORDER

SEND ORDER TO:

McGraw Hill LLC | PO Box 182605 | Columbus, OH 43218-2605
Email: orders_mhe@mheducation.com | Phone: 1-800-338-3987 | Fax: 1-800-953-8691

QUOTE DATE: 03/22/2021

ACCOUNT NAME: Gary Community School Corp

EXPIRATION DATE: 05/06/2021

QUOTE NUMBER: ETYNAN-03222021-008

ACCOUNT #: 253573

PAGE #: 16



Because learning changes everything.®

QUOTE PREPARED FOR:

Gary Community School Corp
900 GERRY ST
Gary, IN 46406-2099
ACCOUNT NUMBER: 253573

SUBSCRIPTION/DIGITAL CONTACT:

Kim Bradley
kbradley@garycsc.k12.in.us

CONTACT:

Kim Bradley
kbradley@garycsc.k12.in.us

SALES REP INFORMATION:

Neal McCutcheon
neal.mccutcheon@mheducation.com

Section Summary	Value of All Materials	Free Materials	Product Subtotal
STUDYSYNC 2021			
GRADE 6	\$56,204.90	(\$1,589.90)	\$54,615.00
GRADE 7	\$55,709.90	(\$1,589.90)	\$54,120.00
GRADE 8	\$55,214.90	(\$1,589.90)	\$53,625.00
GRADE 9	\$56,699.90	(\$1,589.90)	\$55,110.00
GRADE 10	\$49,439.90	(\$1,589.90)	\$47,850.00
GRADE 11	\$49,274.90	(\$1,589.90)	\$47,685.00
GRADE 12	\$41,354.90	(\$1,589.90)	\$39,765.00
PRODUCT TOTAL*	\$363,899.30	(\$11,129.30)	\$352,770.00
ESTIMATED S&H**			\$28,221.60
ESTIMATED TAX**			\$0.00
GRAND TOTAL*			\$380,991.60

* Price firm for 45 days from quote date. Price quote must be attached to school purchase order to receive the quoted price and free materials.

**Shipping and handling charges are not included in the quote total. Actual shipping and handling charges will be applied at time of order. Taxes shown are only estimates. If applicable, actual tax charges will be applied at time of order.

Comments:

PLEASE INCLUDE THIS PROPOSAL WITH YOUR PURCHASE ORDER

SEND ORDER TO:

McGraw Hill LLC | PO Box 182605 | Columbus, OH 43218-2605
Email: orders_mhe@mheducation.com | Phone: 1-800-338-3987 | Fax: 1-800-953-8691

QUOTE DATE: 03/22/2021

ACCOUNT NAME: Gary Community School Corp

EXPIRATION DATE: 05/06/2021

QUOTE NUMBER: ETYNAN-03222021-007

ACCOUNT #: 253573

PAGE #: 1



Because learning changes everything.®

Product Description	ISBN	Qty	Unit Price	Free Materials	Line Subtotal
STUDYSYNC 2021					
GRADE 6					
<u>SINGLE BIND</u>					
STUDYSYNC CORE ELA GR 6 STD (PRT AND DIG PLUS 2 NOVELS) STDNT SGL BIND 6 YR BDL	978-0-07-703668-3	331	\$165.00	\$0.00	\$54,615.00
SINGLE BIND Subtotal:				\$0.00	\$54,615.00
<u>TEACHER MATERIAL</u>					
STUDYSYNC CORE ELA GRADE 6 TEACHER EDITION PACKAGE VOLUMES 1 AND 2	978-0-07-703691-1	5	\$168.99	\$844.95	*Free Materials
STUDYSYNC GRADE 6 TEACHER ONLINE 6 YEAR SUBSCRIPTION	978-0-07-686775-2	5	\$148.99	\$744.95	*Free Materials
TEACHER MATERIAL Subtotal:				\$1,589.90	\$0.00
GRADE 6 Subtotal:				\$1,589.90	\$54,615.00
GRADE 7					
<u>SINGLE BIND</u>					
STUDYSYNC CORE ELA GR 7 STD (PRT AND DIG PLUS 2 NOVELS) STDNT SGL BIND 6 YR BDL	978-0-07-703672-0	328	\$165.00	\$0.00	\$54,120.00
SINGLE BIND Subtotal:				\$0.00	\$54,120.00
<u>TEACHER MATERIAL</u>					
STUDYSYNC CORE ELA GRADE 7 TEACHER EDITION PACKAGE VOLUMES 1 AND 2	978-0-07-703692-8	5	\$168.99	\$844.95	*Free Materials
STUDYSYNC GRADE 7 TEACHER ONLINE 6 YEAR SUBSCRIPTION	978-0-07-700848-2	5	\$148.99	\$744.95	*Free Materials
TEACHER MATERIAL Subtotal:				\$1,589.90	\$0.00
GRADE 7 Subtotal:				\$1,589.90	\$54,120.00
GRADE 8					
<u>SINGLE BIND</u>					
STUDYSYNC CORE ELA GR 8 STD (PRT AND DIG PLUS 2 NOVELS) STDNT SGL BIND 6 YR BDL	978-0-07-703675-1	325	\$165.00	\$0.00	\$53,625.00
SINGLE BIND Subtotal:				\$0.00	\$53,625.00
<u>TEACHER MATERIAL</u>					
STUDYSYNC CORE ELA GRADE 8 TEACHER EDITION PACKAGE VOLUMES 1 AND 2	978-0-07-703693-5	5	\$168.99	\$844.95	*Free Materials
STUDYSYNC GRADE 8 TEACHER ONLINE 6 YEAR SUBSCRIPTION	978-0-07-700851-2	5	\$148.99	\$744.95	*Free Materials
TEACHER MATERIAL Subtotal:				\$1,589.90	\$0.00
GRADE 8 Subtotal:				\$1,589.90	\$53,625.00

PLEASE INCLUDE THIS PROPOSAL WITH YOUR PURCHASE ORDER

SEND ORDER TO:

McGraw Hill LLC | PO Box 182605 | Columbus, OH 43218-2605
Email: orders_mhe@mheducation.com | Phone: 1-800-338-3987 | Fax: 1-800-953-8691

QUOTE DATE: 03/22/2021
QUOTE NUMBER: ETYNAN-03222021-007

ACCOUNT NAME: Gary Community School Corp
ACCOUNT #: 253573

EXPIRATION DATE: 05/06/2021
PAGE #: 2



Because learning changes everything.®

GRADE 9					
SINGLE BIND					
Product Description	ISBN	Qty	Unit Price	Free Materials	Line Subtotal
STDYSYNC CORE ELA GR 9 STD (PRINT & DIGITAL + 2 NOVELS)	978-0-07-703747-5	334	\$165.00	\$0.00	\$55,110.00
STDNT SGL BIND 6 YR BDL					
SINGLE BIND Subtotal:				\$0.00	\$55,110.00
TEACHER MATERIAL					
STDYSYNC CORE ELA GRADE 9 TEACHER EDITION PACKAGE VOLUMES 1 AND 2	978-0-07-703787-1	5	\$168.99	\$844.95	*Free Materials
STDYSYNC GRADE 9 TEACHER ONLINE 6 YEAR SUBSCRIPTION	978-0-07-685296-3	5	\$148.99	\$744.95	*Free Materials
TEACHER MATERIAL Subtotal:				\$1,589.90	\$0.00
GRADE 9 Subtotal:				\$1,589.90	\$55,110.00
GRADE 10					
SINGLE BIND					
STDYSYNC CORE ELA GR 10 STD (PRINT & DIGITAL + 2 NOVELS)	978-0-07-703750-5	290	\$165.00	\$0.00	\$47,850.00
STDNT SGL BIND 6 YR BDL					
SINGLE BIND Subtotal:				\$0.00	\$47,850.00
TEACHER MATERIAL					
STDYSYNC CORE ELA GRADE 10 TEACHER EDITION PACKAGE VOLUMES 1 AND 2	978-0-07-703791-8	5	\$168.99	\$844.95	*Free Materials
STDYSYNC GRADE 10 TEACHER ONLINE 6 YEAR SUBSCRIPTION	978-0-07-700788-1	5	\$148.99	\$744.95	*Free Materials
TEACHER MATERIAL Subtotal:				\$1,589.90	\$0.00
GRADE 10 Subtotal:				\$1,589.90	\$47,850.00
GRADE 11					
SINGLE BIND					
STDYSYNC CORE ELA GR 11 STD (PRINT & DIGITAL + 2 NOVELS)	978-0-07-703765-9	289	\$165.00	\$0.00	\$47,685.00
STDNT SGL BIND 6 YR BDL					
SINGLE BIND Subtotal:				\$0.00	\$47,685.00
TEACHER MATERIAL					
STDYSYNC CORE ELA GRADE 11 TEACHER EDITION PACKAGE VOLUMES 1 AND 2	978-0-07-703792-5	5	\$168.99	\$844.95	*Free Materials
STDYSYNC GRADE 11 TEACHER ONLINE 6 YEAR SUBSCRIPTION	978-0-07-700794-2	5	\$148.99	\$744.95	*Free Materials
TEACHER MATERIAL Subtotal:				\$1,589.90	\$0.00
GRADE 11 Subtotal:				\$1,589.90	\$47,685.00
GRADE 12					
SINGLE BIND					
STDYSYNC CORE ELA GR 12 STD (PRINT & DIGITAL + 2 NOVELS)	978-0-07-703768-0	241	\$165.00	\$0.00	\$39,765.00
STDNT SGL BIND 6 YR BDL					
SINGLE BIND Subtotal:				\$0.00	\$39,765.00

PLEASE INCLUDE THIS PROPOSAL WITH YOUR PURCHASE ORDER

SEND ORDER TO:

McGraw Hill LLC | PO Box 182605 | Columbus, OH 43218-2605
Email: orders_mhe@mheducation.com | Phone: 1-800-338-3987 | Fax: 1-800-953-8691

QUOTE DATE: 03/22/2021

ACCOUNT NAME: Gary Community School Corp

EXPIRATION DATE: 05/06/2021

QUOTE NUMBER: ETYNAN-03222021-007

ACCOUNT #: 253573

PAGE #: 3



Because learning changes everything.®

Product Description	ISBN	Qty	Unit Price	Free Materials	Line Subtotal
TEACHER MATERIAL					
STUDYSYNC CORE ELA GRADE 12 TEACHER EDITION PACKAGE VOLUMES 1 AND 2	978-0-07-703796-3	5	\$168.99	\$844.95	*Free Materials
STUDYSYNC GRADE 12 TEACHER ONLINE 6 YEAR SUBSCRIPTION	978-0-07-700837-6	5	\$148.99	\$744.95	*Free Materials
TEACHER MATERIAL Subtotal:				\$1,589.90	\$0.00
GRADE 12 Subtotal:				\$1,589.90	\$39,765.00

PLEASE INCLUDE THIS PROPOSAL WITH YOUR PURCHASE ORDER

SEND ORDER TO:

McGraw Hill LLC | PO Box 182605 | Columbus, OH 43218-2605
 Email: orders_mhe@mheducation.com | Phone: 1-800-338-3987 | Fax: 1-800-953-8691

QUOTE DATE: 03/22/2021

ACCOUNT NAME: Gary Community School Corp

EXPIRATION DATE: 05/06/2021

QUOTE NUMBER: ETYNAN-03222021-007

ACCOUNT #: 253573

PAGE #: 4



Because learning changes everything.®

QUOTE PREPARED FOR:

Gary Community School Corp
900 GERRY ST
Gary, IN 46406-2099
ACCOUNT NUMBER: 253573

CONTACT:

Kim Bradley
kbradley@garycsc.k12.in.us

VALUE OF ALL MATERIALS	\$363,899.30
FREE MATERIALS	(\$11,129.30)
PRODUCT TOTAL*	\$352,770.00
ESTIMATED SHIPPING & HANDLING**	\$28,221.60
ESTIMATED TAX**	\$0.00
GRAND TOTAL	\$380,991.60

SUBSCRIPTION/DIGITAL CONTACT:

Kim Bradley
kbradley@garycsc.k12.in.us

Comments:

* Price firm for 45 days from quote date. Price quote must be attached to school purchase order to receive the quoted price and free materials.

**Shipping and handling charges are not included in the quote total. Actual shipping and handling charges will be applied at time of order. Taxes shown are only estimates. If applicable, actual tax charges will be applied at time of order.

Terms of Service:

By placing an order for digital products (the 'Subscribed Materials'), the entity that this price quote has been prepared for ('Subscriber') agrees to be bound by the Terms of Service and any specific provisions required by Subscriber's state law, each located in the applicable links below. Subject to Subscriber's payment of the fees set out above, McGraw Hill LLC hereby grants to Subscriber a non-exclusive, non-transferable license to allow only the number of Authorized Users that corresponds to the quantity of Subscribed Materials set forth above to access and use the Subscribed Materials under the terms described in the Terms of Service and any specific provisions required by Subscriber's state law, each located in the applicable links below. The subscription term for the Subscribed Materials shall be as set forth in the Product Description above. If no subscription term is specified, the initial term shall be one (1) year from the date of this price quote (the 'Initial Subscription Term'), and thereafter the Subscriber shall renew for additional one (1) year terms (each a 'Subscription Renewal Term'), provided MHE has chosen to renew the subscription and has sent an invoice for such Subscription Renewal Term to Subscriber.

[Terms Of Service](#)

[Provisions required by Subscriber State law](#)

ATTENTION: In our effort to protect our customer's data, we will no longer store credit card data in any manner within in our system. Therefore, as of April 30, 2016 we will no longer accept credit card orders via email, fax, or mail/package delivery. Credit card orders may be placed over the phone by calling the number listed above or via our websites by visiting www.mheducation.com (or www.mhcoast2coast.com).

School Purchase Order Number: _____

Name of School Official (Please Print)

Signature of School Official

PLEASE INCLUDE THIS PROPOSAL WITH YOUR PURCHASE ORDER

SEND ORDER TO:

McGraw Hill LLC | PO Box 182605 | Columbus, OH 43218-2605
Email: orders_mhe@mheducation.com | Phone: 1-800-338-3987 | Fax: 1-800-953-8691

QUOTE DATE: 03/22/2021

ACCOUNT NAME: Gary Community School Corp

EXPIRATION DATE: 05/06/2021

QUOTE NUMBER: ETYNAN-03222021-007

ACCOUNT #: 253573

PAGE #: 5

HOUGHTON MIFFLIN HARCOURT

Date of Proposal: 3/22/2021

Proposal Expiration Date: 5/6/2021

**Houghton Mifflin Harcourt****Proposal**

Prepared For

Gary Cmty School Corporation

9th Ave

Gary IN 46406

Attention:

Kimberley Bradley

kbradley1@garycsc.k12.in.us

For the Purchase of:

Comprehensive ELA Package 6 Years

Prepared By

Caryl Anderson

caryl.anderson@hnhco.com

Please submit this proposal with your purchase order.

Purchase orders or duly executed service agreements for **Professional Services** purchased, must be submitted at least 30 days before the service event date.

Attention:
Kimberley Bradley
kbradley1@garycsc.k12.in.us

Customer Experience
9400 South Park Center Loop
Orlando, FL 32819
FAX: 800-269-5232
k12orders@hnhco.com

HMH Confidential and Proprietary

007963858

Sold:0000100048 Ship:0000100048

Page 1 of 15

Please submit this form with your purchase order

Date of Proposal: 3/22/2021

Proposal for
Gary Cmty School Corporation

Expiration Date: 5/6/2021

ISBN	Title	Price	Quantity	Value of All Material	Free Materials Quantity
Grade K					
Student Resource Package					
9780358148029	2020 Indiana Into Reading Comprehensive Student Resource Package 6 Year Print/6 Year Digital Grade K Package Includes: Into Reading Student myBook Softcover 6 Year Print Grade K Into Reading Student myBook plus Resources Online 6 Year Grade K Rigby Leveled Library Online 6 Year Grade K Receive 1 Teacher Resource Package at No Charge with the purchase of 25 Student Resource Packages	\$190.00	407	\$77,330.00	
Total for Student Resource Package		\$77,330.00			
Teacher Resource Package					
9780358147480	2020 Indiana Into Reading Comprehensive Teacher Resource Package with 6 Year Digital Grade K Package Includes: Into Reading Big Book Set Grade K Into Reading Little Big Book Set of 6 Grade K Into Reading Read Aloud Set Grade K Rigby Leveled Library with Take and Teach Lessons Grade K Indiana Into Reading Planning Guide Grade K Into Reading Teacher Digital Management Center 6 Year Grade K Into Reading Teacher's Guide Set Grade K Into Reading Bookstix Grade K Into Reading Guiding Principles and Strategies Grade K Into Reading Poster Set Grade K Into Reading Tabletop Minilessons: English Language Development Grade K Into Reading Tabletop Minilessons: Reading Grade K Into Reading Teacher Resource Book Grade K Rigby Leveled Library Teacher Digital Management Center 6 Year Grade K Into Reading Instructional Card Kit Grade K Into Reading Start Right Reader Set of 6 Grade K Into Reading Benchmark Guided Reading Assessment Kit Primary Grade K-2	\$3,475.00			16
Total for Teacher Resource Package		\$0.00			
A la Carte Items Available for Purchase					
9780358093619	2020 Into Reading iRead Student Online 1 Year Grades K-2	\$16.00	407	\$6,512.00	
9780358090021	2020 Into Reading iRead Teacher Online 1 Year Grades K-2	\$150.00			16
9780358522119	2019 Amira Suite Student License Digital 6 Year Grades K-3 Includes: Amira Dyslexia Screener Digital Student Resources 6 Year Amira Oral Reading Fluency Assessment Digital Student Resources 6 Year Amira Practice Digital Student Resources 6 Year Implementation Success	\$112.00	407	\$45,584.00	
9780358556732	2019 Amira Suite Teacher License Digital 6 Year Grades K-3 Includes: Amira Dyslexia Screener Digital Teacher Resources 6 Year Amira Oral Reading Fluency Assessment Digital Teacher Resources 6 Year Amira Practice Digital Teacher Resources 6 Year Teacher's Corner Elementary License 6 Year	\$284.00			16
Total for A la Carte Items Available for Purchase		\$52,096.00			
Total for Grade K		\$129,426.00			

Grade 1
Student Resource Package

Attention:
Kimberley Bradley
kbradley1@garycsc.k12.in.us

Customer Experience
9400 South Park Center Loop
Orlando, FL 32819
FAX: 800-269-5232
k12orders@hnhco.com

HMH Confidential and Proprietary

007963858

Sold:0000100048 Ship:0000100048

Page 2 of 15

Please submit this form with your purchase order

Date of Proposal: 3/22/2021

**Proposal for
Gary Cmty School Corporation**

Expiration Date: 5/6/2021

ISBN	Title	Price	Quantity	Value of All Material	Free Materials Quantity
9780358148036	2020 Indiana Into Reading Comprehensive Student Resource Package 6 Year Print/6 Year Digital Grade 1 Package Includes: Into Reading Student myBook Softcover Set 6 Year Print Grade 1 Into Reading Student myBook plus Resources Online 6 Year Grade 1 Rigby Leveled Library Online 6 Year Grade 1 Receive 1 Teacher Resource Package at No Charge with the purchase of 25 Student Resource Packages	\$190.00	443	\$84,170.00	
Total for Student Resource Package		\$84,170.00			
Teacher Resource Package					
9780358147497	2020 Indiana Into Reading Comprehensive Teacher Resource Package with 6 Year Digital Grade 1 Package Includes: Into Reading Big Book Set Grade 1 Into Reading Read Aloud Set Grade 1 Rigby Leveled Library with Take and Teach Lessons Grade 1 Indiana Into Reading Planning Guide Grade 1 Into Reading Writing Workshop Teacher's Guide Grade 1 Into Reading Teacher Digital Management Center 6 Year Grade 1 Into Reading Teacher's Guide Set Grade 1 Into Reading Teaching Pal Set Grade 1 Into Reading Bookstix Grade 1 Into Reading Guiding Principles and Strategies Grade 1-2 Into Reading Tabletop Minilessons: English Language Development Grade 1 Into Reading Tabletop Minilessons: Reading Grade 1 Into Reading Teacher Resource Book Grade 1 Rigby Leveled Library Teacher Digital Management Center 6 Year Grade 1 Into Reading Instructional Card Kit Grade 1 Into Reading Start Right Reader Set of 6 Grade 1 Trade Classroom Library 6 pack with Take and Teach Lessons Grade 1 Into Reading Benchmark Guided Reading Assessment Kit Primary Grade K-2	\$3,475.00			17
Total for Teacher Resource Package		\$0.00			
A la Carte Items Available for Purchase					
9780358093619	2020 Into Reading iRead Student Online 1 Year Grades K-2	\$16.00	443	\$7,088.00	
9780358090021	2020 Into Reading iRead Teacher Online 1 Year Grades K-2	\$150.00			17
9780358522119	2019 Amira Suite Student License Digital 6 Year Grades K-3 Includes: Amira Dyslexia Screener Digital Student Resources 6 Year Amira Oral Reading Fluency Assessment Digital Student Resources 6 Year Amira Practice Digital Student Resources 6 Year Implementation Success	\$112.00	443	\$49,616.00	
9780358556732	2019 Amira Suite Teacher License Digital 6 Year Grades K-3 Includes: Amira Dyslexia Screener Digital Teacher Resources 6 Year Amira Oral Reading Fluency Assessment Digital Teacher Resources 6 Year Amira Practice Digital Teacher Resources 6 Year Teacher's Corner Elementary License 6 Year	\$284.00			17
Total for A la Carte Items Available for Purchase		\$56,704.00			
Total for Grade 1		\$140,874.00			
Grade 2					
Student Resource Package					
9780358148043	2020 Indiana Into Reading Comprehensive Student Resource Package 6 Year Print/6 Year Digital Grade 2	\$190.00	400	\$76,000.00	
		<p align="center">Attention: Kimberley Bradley kbradley1@garycsc.k12.in.us</p> <p align="center">Customer Experience 9400 South Park Center Loop Orlando, FL 32819 FAX: 800-269-5232 k12orders@hnhco.com</p>			
		HMH Confidential and Proprietary			
007963858	Sold:0000100048 Ship:0000100048	Page 3 of 15	Please submit this form with your purchase order		

Date of Proposal: 3/22/2021

**Proposal for
Gary Cmty School Corporation**

Expiration Date: 5/6/2021

ISBN	Title	Price	Quantity	Value of All Material	Free Materials Quantity
Package Includes: Into Reading Student myBook Softcover Set 6 Year Print Grade 2 Into Reading Student myBook plus Resources Online 6 Year Grade 2 Rigby Leveled Library Online 6 Year Grade 2 Receive 1 Teacher Resource Package at No Charge with the purchase of 25 Student Resource Packages					
Total for Student Resource Package		\$76,000.00			
Teacher Resource Package					
9780358147503	2020 Indiana Into Reading Comprehensive Teacher Resource Package with 6 Year Digital Grade 2	\$3,475.00			16
Package Includes: Into Reading Read Aloud Set Grade 2 Rigby Leveled Library with Take and Teach Lessons Grade 2 Indiana Into Reading Planning Guide Grade 2 Into Reading Writing Workshop Teacher's Guide Grade 2 Into Reading Teacher Digital Management Center 6 Year Grade 2 Into Reading Teacher's Guide Set Grade 2 Into Reading Teaching Pal Set Grade 2 Into Reading Bookstix Grade 2 Into Reading Guiding Principles and Strategies Grade 1-2 Into Reading Tabletop Minilessons: English Language Development Grade 2 Into Reading Tabletop Minilessons: Reading Grade 2 Into Reading Teacher Resource Book Grade 2 Rigby Leveled Library Teacher Digital Management Center 6 Year Grade 2 Into Reading Instructional Card Kit Grade 2 Into Reading Start Right Reader Set of 6 Grade 2 Trade Classroom Library 6 pack with Take and Teach Lessons Grade 2 Into Reading Benchmark Guided Reading Assessment Kit Primary Grade K-2					
Total for Teacher Resource Package		\$0.00			
A la Carte Items Available for Purchase					
9780358093619	2020 Into Reading iRead Student Online 1 Year Grades K-2	\$16.00	400	\$6,400.00	
9780358090021	2020 Into Reading iRead Teacher Online 1 Year Grades K-2	\$150.00			16
9780358522119	2019 Amira Suite Student License Digital 6 Year Grades K-3 Includes: Amira Dyslexia Screener Digital Student Resources 6 Year Amira Oral Reading Fluency Assessment Digital Student Resources 6 Year Amira Practice Digital Student Resources 6 Year Implementation Success	\$112.00	400	\$44,800.00	
9780358556732	2019 Amira Suite Teacher License Digital 6 Year Grades K-3 Includes: Amira Dyslexia Screener Digital Teacher Resources 6 Year Amira Oral Reading Fluency Assessment Digital Teacher Resources 6 Year Amira Practice Digital Teacher Resources 6 Year Teacher's Corner Elementary License 6 Year	\$284.00			16
Total for A la Carte Items Available for Purchase		\$51,200.00			
Total for Grade 2		\$127,200.00			
Grade 3					
Student Resource Package					
9780358148050	2020 Indiana Into Reading Comprehensive Student Resource Package 6 Year Print/6 Year Digital Grade 3	\$170.00	425	\$72,250.00	
Package Includes: Into Reading Student myBook Softcover Set 6 Year Print Grade 3 Into Reading Student myBook plus Resources Online 6 Year Grade 3 Rigby Leveled Library Online 6 Year Grade 3					
		Attention: Kimberley Bradley kbradley1@garycsc.k12.in.us			
		Customer Experience 9400 South Park Center Loop Orlando, FL 32819 FAX: 800-269-5232 k12orders@hnhco.com			
HMH Confidential and Proprietary					
007963858	Sold:0000100048 Ship:0000100048	Page 4 of 15	Please submit this form with your purchase order		

Date of Proposal: 3/22/2021

**Proposal for
Gary Cmty School Corporation**

Expiration Date: 5/6/2021

ISBN	Title	Price	Quantity	Value of All Material	Free Materials Quantity
Receive 1 Teacher Resource Package at No Charge with the purchase of 25 Student Resource Packages					
Total for Student Resource Package		\$72,250.00			
Teacher Resource Package					
9780358147510	2020 Indiana Into Reading Comprehensive Teacher Resource Package with 6 Year Digital Grade 3	\$2,825.00			17
Package Includes: Rigby Leveled Library with Take and Teach Lessons Grade 3 Indiana Into Reading Planning Guide Grade 3 Into Reading Writing Workshop Teacher's Guide Grade 3 Into Reading Teacher Digital Management Center 6 Year Grade 3 Into Reading Teacher's Guide Set Grade 3 Into Reading Teaching Pal Set Grade 3 Into Reading Guiding Principles and Strategies Grade 3-5 Into Reading Tabletop Minilessons: English Language Development Grade 3 Into Reading Tabletop Minilessons: Reading Grade 3 Into Reading Teacher Resource Book Grade 3 Into Reading Vocabulary Cards Grade 3 Rigby Leveled Library Teacher Digital Management Center 6 Year Grade 3 Trade Classroom Library 6 pack with Take and Teach Lessons Grade 3 Into Reading Benchmark Guided Reading Assessment Kit Intermediate Grade 3-5					
Total for Teacher Resource Package		\$0.00			
A la Carte Items Available for Purchase					
9780358508816	Waggle ELA Student License Digital Non CCSS 6 Year Grades 2-8 Includes: Waggle ELA Digital Student Resources Non CCSS 6 Year Implementation Success	\$77.00	425	\$32,725.00	
9780358556930	2021 Waggle ELA Teacher License Digital Non CCSS 6 Year Grades 2-8 Includes: Waggle ELA Digital Teacher Resources Non CCSS 6 Year Access to Teacher's Corner	\$551.00			17
Total for A la Carte Items Available for Purchase		\$32,725.00			
Total for Grade 3		\$104,975.00			
Grade 4					
Student Resource Package					
9780358148067	2020 Indiana Into Reading Comprehensive Student Resource Package 6 Year Print/6 Year Digital Grade 4	\$170.00	425	\$72,250.00	
Package Includes: Into Reading Student myBook Softcover Set 6 Year Print Grade 4 Into Reading Student myBook plus Resources Online 6 Year Grade 4 Rigby Leveled Library Online 6 Year Grade 4					
Receive 1 Teacher Resource Package at No Charge with the purchase of 25 Student Resource Packages					
Total for Student Resource Package		\$72,250.00			
Teacher Resource Package					
9780358147527	2020 Indiana Into Reading Comprehensive Teacher Resource Package with 6 Year Digital Grade 4	\$2,825.00			17
Package Includes: Rigby Leveled Library with Take and Teach Lessons Grade 4 Indiana Into Reading Planning Guide Grade 4					
Total for Grade 4		\$72,250.00			
Grade 5					
Student Resource Package					
9780358148067	2020 Indiana Into Reading Comprehensive Student Resource Package 6 Year Print/6 Year Digital Grade 4	\$170.00	425	\$72,250.00	
Package Includes: Into Reading Student myBook Softcover Set 6 Year Print Grade 4 Into Reading Student myBook plus Resources Online 6 Year Grade 4 Rigby Leveled Library Online 6 Year Grade 4					
Receive 1 Teacher Resource Package at No Charge with the purchase of 25 Student Resource Packages					
Total for Student Resource Package		\$72,250.00			
Teacher Resource Package					
9780358147527	2020 Indiana Into Reading Comprehensive Teacher Resource Package with 6 Year Digital Grade 4	\$2,825.00			17
Package Includes: Rigby Leveled Library with Take and Teach Lessons Grade 4 Indiana Into Reading Planning Guide Grade 4					
Total for Grade 5		\$72,250.00			
Grade 6					
Student Resource Package					
9780358148067	2020 Indiana Into Reading Comprehensive Student Resource Package 6 Year Print/6 Year Digital Grade 4	\$170.00	425	\$72,250.00	
Package Includes: Into Reading Student myBook Softcover Set 6 Year Print Grade 4 Into Reading Student myBook plus Resources Online 6 Year Grade 4 Rigby Leveled Library Online 6 Year Grade 4					
Receive 1 Teacher Resource Package at No Charge with the purchase of 25 Student Resource Packages					
Total for Student Resource Package		\$72,250.00			
Teacher Resource Package					
9780358147527	2020 Indiana Into Reading Comprehensive Teacher Resource Package with 6 Year Digital Grade 4	\$2,825.00			17
Package Includes: Rigby Leveled Library with Take and Teach Lessons Grade 4 Indiana Into Reading Planning Guide Grade 4					
Total for Grade 6		\$72,250.00			
Grade 7					
Student Resource Package					
9780358148067	2020 Indiana Into Reading Comprehensive Student Resource Package 6 Year Print/6 Year Digital Grade 4	\$170.00	425	\$72,250.00	
Package Includes: Into Reading Student myBook Softcover Set 6 Year Print Grade 4 Into Reading Student myBook plus Resources Online 6 Year Grade 4 Rigby Leveled Library Online 6 Year Grade 4					
Receive 1 Teacher Resource Package at No Charge with the purchase of 25 Student Resource Packages					
Total for Student Resource Package		\$72,250.00			
Teacher Resource Package					
9780358147527	2020 Indiana Into Reading Comprehensive Teacher Resource Package with 6 Year Digital Grade 4	\$2,825.00			17
Package Includes: Rigby Leveled Library with Take and Teach Lessons Grade 4 Indiana Into Reading Planning Guide Grade 4					
Total for Grade 7		\$72,250.00			
Grade 8					
Student Resource Package					
9780358148067	2020 Indiana Into Reading Comprehensive Student Resource Package 6 Year Print/6 Year Digital Grade 4	\$170.00	425	\$72,250.00	
Package Includes: Into Reading Student myBook Softcover Set 6 Year Print Grade 4 Into Reading Student myBook plus Resources Online 6 Year Grade 4 Rigby Leveled Library Online 6 Year Grade 4					
Receive 1 Teacher Resource Package at No Charge with the purchase of 25 Student Resource Packages					
Total for Student Resource Package		\$72,250.00			
Teacher Resource Package					
9780358147527	2020 Indiana Into Reading Comprehensive Teacher Resource Package with 6 Year Digital Grade 4	\$2,825.00			17
Package Includes: Rigby Leveled Library with Take and Teach Lessons Grade 4 Indiana Into Reading Planning Guide Grade 4					
Total for Grade 8		\$72,250.00			
Grade 9					
Student Resource Package					
9780358148067	2020 Indiana Into Reading Comprehensive Student Resource Package 6 Year Print/6 Year Digital Grade 4	\$170.00	425	\$72,250.00	
Package Includes: Into Reading Student myBook Softcover Set 6 Year Print Grade 4 Into Reading Student myBook plus Resources Online 6 Year Grade 4 Rigby Leveled Library Online 6 Year Grade 4					
Receive 1 Teacher Resource Package at No Charge with the purchase of 25 Student Resource Packages					
Total for Student Resource Package		\$72,250.00			
Teacher Resource Package					
9780358147527	2020 Indiana Into Reading Comprehensive Teacher Resource Package with 6 Year Digital Grade 4	\$2,825.00			17
Package Includes: Rigby Leveled Library with Take and Teach Lessons Grade 4 Indiana Into Reading Planning Guide Grade 4					
Total for Grade 9		\$72,250.00			
Grade 10					
Student Resource Package					
9780358148067	2020 Indiana Into Reading Comprehensive Student Resource Package 6 Year Print/6 Year Digital Grade 4	\$170.00	425	\$72,250.00	
Package Includes: Into Reading Student myBook Softcover Set 6 Year Print Grade 4 Into Reading Student myBook plus Resources Online 6 Year Grade 4 Rigby Leveled Library Online 6 Year Grade 4					
Receive 1 Teacher Resource Package at No Charge with the purchase of 25 Student Resource Packages					
Total for Student Resource Package		\$72,250.00			
Teacher Resource Package					
9780358147527	2020 Indiana Into Reading Comprehensive Teacher Resource Package with 6 Year Digital Grade 4	\$2,825.00			17
Package Includes: Rigby Leveled Library with Take and Teach Lessons Grade 4 Indiana Into Reading Planning Guide Grade 4					
Total for Grade 10		\$72,250.00			
Grade 11					
Student Resource Package					
9780358148067	2020 Indiana Into Reading Comprehensive Student Resource Package 6 Year Print/6 Year Digital Grade 4	\$170.00	425	\$72,250.00	
Package Includes: Into Reading Student myBook Softcover Set 6 Year Print Grade 4 Into Reading Student myBook plus Resources Online 6 Year Grade 4 Rigby Leveled Library Online 6 Year Grade 4					
Receive 1 Teacher Resource Package at No Charge with the purchase of 25 Student Resource Packages					
Total for Student Resource Package		\$72,250.00			
Teacher Resource Package					
9780358147527	2020 Indiana Into Reading Comprehensive Teacher Resource Package with 6 Year Digital Grade 4	\$2,825.00			17
Package Includes: Rigby Leveled Library with Take and Teach Lessons Grade 4 Indiana Into Reading Planning Guide Grade 4					
Total for Grade 11		\$72,250.00			
Grade 12					
Student Resource Package					
9780358148067	2020 Indiana Into Reading Comprehensive Student Resource Package 6 Year Print/6 Year Digital Grade 4	\$170.00	425	\$72,250.00	
Package Includes: Into Reading Student myBook Softcover Set 6 Year Print Grade 4 Into Reading Student myBook plus Resources Online 6 Year Grade 4 Rigby Leveled Library Online 6 Year Grade 4					
Receive 1 Teacher Resource Package at No Charge with the purchase of 25 Student Resource Packages					
Total for Student Resource Package		\$72,250.00			
Teacher Resource Package					
9780358147527	2020 Indiana Into Reading Comprehensive Teacher Resource Package with 6 Year Digital Grade 4	\$2,825.00			17
Package Includes: Rigby Leveled Library with Take and Teach Lessons Grade 4 Indiana Into Reading Planning Guide Grade 4					
Total for Grade 12		\$72,250.00			
Total for All Grades		\$1,049,750.00			

Attention:
Kimberley Bradley
kbradley1@garycsc.k12.in.us

Customer Experience
9400 South Park Center Loop
Orlando, FL 32819
FAX: 800-269-5232
k12orders@hnhco.com

HMH Confidential and Proprietary

007963858 Sold:0000100048 Ship:0000100048

Page 5 of 15

Please submit this form with your purchase order

Date of Proposal: 3/22/2021

**Proposal for
Gary Cmty School Corporation**

Expiration Date: 5/6/2021

ISBN	Title	Price	Quantity	Value of All Material	Free Materials Quantity
	Into Reading Writing Workshop Teacher's Guide Grade 4 Into Reading Teacher Digital Management Center 6 Year Grade 4 Into Reading Teacher's Guide Set Grade 4 Into Reading Teaching Pal Set Grade 4 Into Reading Guiding Principles and Strategies Grade 3-5 Into Reading Tabletop Minilessons: English Language Development Grade 4 Into Reading Tabletop Minilessons: Reading Grade 4 Into Reading Teacher Resource Book Grade 4 Into Reading Vocabulary Cards Grade 4 Rigby Leveled Library Teacher Digital Management Center 6 Year Grade 4 Trade Classroom Library 6 pack with Take and Teach Lessons Grade 4 Into Reading Benchmark Guided Reading Assessment Kit Intermediate Grade 3-5				
Total for Teacher Resource Package		\$0.00			
A la Carte Items Available for Purchase					
9780358508816	Waggle ELA Student License Digital Non CCSS 6 Year Grades 2-8 Includes: Waggle ELA Digital Student Resources Non CCSS 6 Year Implementation Success	\$77.00	425	\$32,725.00	
9780358556930	2021 Waggle ELA Teacher License Digital Non CCSS 6 Year Grades 2-8 Includes: Waggle ELA Digital Teacher Resources Non CCSS 6 Year Access to Teacher's Corner	\$551.00			17
Total for A la Carte Items Available for Purchase		\$32,725.00			
Total for Grade 4		\$104,975.00			
Grade 5					
Student Resource Package					
9780358148074	2020 Indiana Into Reading Comprehensive Student Resource Package 6 Year Print/6 Year Digital Grade 5 Package Includes: Into Reading Student myBook Softcover Set 6 Year Print Grade 5 Into Reading Student myBook plus Resources Online 6 Year Grade 5 Rigby Leveled Library Online 6 Year Grade 5 Receive 1 Teacher Resource Package at No Charge with the purchase of 25 Student Resource Packages	\$170.00	410	\$69,700.00	
Total for Student Resource Package		\$69,700.00			
Teacher Resource Package					
9780358147534	2020 Indiana Into Reading Comprehensive Teacher Resource Package with 6 Year Digital Grade 5 Package Includes: Rigby Leveled Library with Take and Teach Lessons Grade 5 Indiana Into Reading Planning Guide Grade 5 Into Reading Writing Workshop Teacher's Guide Grade 5 Into Reading Teacher Digital Management Center 6 Year Grade 5 Into Reading Teacher's Guide Set Grade 5 Into Reading Teaching Pal Set Grade 5 Into Reading Guiding Principles and Strategies Grade 3-5 Into Reading Tabletop Minilessons: English Language Development Grade 5 Into Reading Tabletop Minilessons: Reading Grade 5 Into Reading Teacher Resource Book Grade 5 Into Reading Vocabulary Cards Grade 5 Rigby Leveled Library Teacher Digital Management Center 6 Year Grade 5 Trade Classroom Library 6 pack with Take and Teach Lessons Grade 5 Into Reading Benchmark Guided Reading Assessment Kit Intermediate Grade 3-5	\$2,825.00			16
Total for Teacher Resource Package		\$2,825.00			
Total for Grade 5		\$72,525.00			
Total for Grades 4 & 5		\$177,500.00			

Attention:
Kimberley Bradley
kbradley1@garycsc.k12.in.us

Customer Experience
9400 South Park Center Loop
Orlando, FL 32819
FAX: 800-269-5232
k12orders@hnhco.com

007963858 Sold:0000100048 Ship:0000100048 Page 6 of 15

HMH Confidential and Proprietary Please submit this form with your purchase order

Attention:
Kimberley Bradley
kbradley1@garycsc.k12.in.us

Customer Experience
9400 South Park Center Loop
Orlando, FL 32819
FAX: 800-269-5232
k12orders@hnhco.com

HMH Confidential and Proprietary

007963858

Sold:0000100048 Ship:0000100048

Page 6 of 15

Please submit this form with your purchase order

Date of Proposal: 3/22/2021

**Proposal for
Gary Cmty School Corporation**

Expiration Date: 5/6/2021

ISBN	Title	Price	Quantity	Value of All Material	Free Materials Quantity
Total for Teacher Resource Package		\$0.00			
A la Carte Items Available for Purchase					
9780358508816	Waggle ELA Student License Digital Non CCSS 6 Year Grades 2-8 Includes: Waggle ELA Digital Student Resources Non CCSS 6 Year Implementation Success	\$77.00	410	\$31,570.00	
9780358556830	2021 Waggle ELA Teacher License Digital Non CCSS 6 Year Grades 2-8 Includes: Waggle ELA Digital Teacher Resources Non CCSS 6 Year Access to Teacher's Corner	\$551.00			16
Total for A la Carte Items Available for Purchase		\$31,570.00			
Total for Grade 5		\$101,270.00			
Grade 6					
Student Resource Package					
9780358446392	2020 Indiana Into Literature Comprehensive Student Resource Package with Write In Student Edition Plus 6 Year Print/6 Year Digital Grade 6 Package Includes: Student Edition Softcover 6 Year Print Grade 6 Digital Student Edition + Resources Online 6 Year Grade 6 Into Literature Plus Writable Online 6 Year Digital Grade 6 Implementation Success Also includes 3 purchase points per student edition which can be used toward choice of novels from HMH novel list. Receive 1 Teacher Resource Package at No Charge with the purchase of 50 Student Resource Packages	\$154.05	365	\$56,228.25	
Total for Student Resource Package		\$56,228.25			
Teacher Resource Package					
9780358178910	2020 Indiana Into Literature Comprehensive Teacher Resource Package with 6 Year Digital Grade 6 Package Includes: Indiana Teacher's Edition and Planning and Pacing Guide Set Grade 6 Online Teacher Digital Management Center 6 Year Digital Grade 6	\$295.00			7
Total for Teacher Resource Package		\$0.00			
Total for Grade 6		\$56,228.25			
Grade 7					
Student Resource Package					
9780358446590	2020 Indiana Into Literature Comprehensive Student Resource Package with Write In Student Edition Plus 6 Year Print/6 Year Digital Grade 7 Package Includes: Student Edition Softcover 6 Year Print Grade 7 Digital Student Edition + Resources Online 6 Year Grade 7 Into Literature Plus Writable Online 6 Year Digital Grade 7 Implementation Success Also includes 3 purchase points per student edition which can be used toward choice of novels from HMH novel list. Receive 1 Teacher Resource Package at No Charge with the purchase of 50 Student Resource Packages	\$154.05	337	\$51,914.85	
Total for Grade 7		\$51,914.85			
Total for Grade 7		\$51,914.85			

Attention:
Kimberley Bradley
kbradley1@garycsc.k12.in.us

Customer Experience
9400 South Park Center Loop
Orlando, FL 32819
FAX: 800-269-5232
k12orders@hnhco.com

HMH Confidential and Proprietary

007963858 Sold:0000100048 Ship:0000100048

Page 7 of 15

Please submit this form with your purchase order

Date of Proposal: 3/22/2021

**Proposal for
Gary Cmty School Corporation**

Expiration Date: 5/6/2021

ISBN	Title	Price	Quantity	Value of All Material	Free Materials Quantity
Total for Student Resource Package		\$51,914.85			
Teacher Resource Package					
9780358178927	2020 Indiana Into Literature Comprehensive Teacher Resource Package with 6 Year Digital Grade 7	\$295.00			6
Package Includes: Indiana Teacher's Edition and Planning and Pacing Guide Set Grade 7 Online Teacher Digital Management Center 6 Year Digital Grade 7					
Total for Teacher Resource Package		\$0.00			
Total for Grade 7		\$51,914.85			
Grade 8					
Student Resource Package					
9780358446606	2020 Indiana Into Literature Comprehensive Student Resource Package with Write In Student Edition Plus 6 Year Print/6 Year Digital Grade 8	\$154.05	300	\$46,215.00	
Package Includes: Student Edition Softcover 6 Year Print Grade 8 Digital Student Edition + Resources Online 6 Year Grade 8 Into Literature Plus Writable Online 6 Year Digital Grade 8 Implementation Success					
Also includes 3 purchase points per student edition which can be used toward choice of novels from HMH novel list. Receive 1 Teacher Resource Package at No Charge with the purchase of 50 Student Resource Packages					
Total for Student Resource Package		\$46,215.00			
Teacher Resource Package					
9780358178934	2020 Indiana Into Literature Comprehensive Teacher Resource Package with 6 Year Digital Grade 8	\$295.00			6
Package Includes: Indiana Teacher's Edition and Planning and Pacing Guide Set Grade 8 Online Teacher Digital Management Center 6 Year Digital Grade 8					
Total for Teacher Resource Package		\$0.00			
Total for Grade 8		\$46,215.00			
Grade 9					
Student Resource Package					
9780358446613	2020 Indiana Into Literature Comprehensive Student Resource Package w/Write In Student Edition Plus 6 Year Print/6 Year Digital Grade 9	\$157.05	363	\$57,009.15	
Package Includes: Student Edition Softcover 6 Year Print Grade 9 Digital Student Edition + Resources Online 6 Year Grade 9 Into Literature Plus Writable Online 6 Year Digital Grade 9 Implementation Success					
Also includes 3 purchase points per student edition which can be used toward choice of novels from HMH novel list. Receive 1 Teacher Resource Package at No Charge with the purchase of 50 Student Resource Packages					
Total for Student Resource Package		\$57,009.15			
<div> <div>Attention: Kimberley Bradley kbradley1@garycsc.k12.in.us</div> <div>Customer Experience 9400 South Park Center Loop Orlando, FL 32819 FAX: 800-269-5232 k12orders@hnhco.com</div> </div>					
007963858	Sold:0000100048 Ship:0000100048	Page 8 of 15	Please submit this form with your purchase order		

Date of Proposal: 3/22/2021

**Proposal for
Gary Cmty School Corporation**

Expiration Date: 5/6/2021

ISBN	Title	Price	Quantity	Value of All Material	Free Materials Quantity
9780358178985	2020 Indiana Into Literature Comprehensive Teacher Resource Package with 6 Year Digital Grade 11 Package Includes: Indiana Teacher's Edition and Planning and Pacing Guide Set Grade 11 Online Teacher Digital Management Center 6 Year Digital Grade 11	\$300.00			7
Total for Teacher Resource Package		\$0.00			
Total for Grade 11		\$54,967.50			
Grade 12					
Student Resource Package					
9780358446712	2020 Indiana Into Literature Comprehensive Student Resource Package w/Write In Student Edition Plus 6 Year Print/6 Year Digital Grade 12 Package Includes: Student Edition Softcover Set 6 Year Print Grade 12 Digital Student Edition + Resources Online 6 Year Grade 12 Into Literature Plus Writable Online 6 Year Digital Grade 12 Implementation Success Also includes 3 purchase points per student edition which can be used toward choice of novels from HMH novel list. Receive 1 Teacher Resource Package at No Charge with the purchase of 75 Student Resource Packages	\$157.05	365	\$57,323.25	
Total for Student Resource Package		\$57,323.25			
Teacher Resource Package					
9780358178972	2020 Indiana Into Literature Comprehensive Teacher Resource Package with 6 Year Digital Grade 12 Package Includes: Indiana Teacher's Edition and Planning and Pacing Guide Set Grade 12 Online Teacher Digital Management Center 6 Year Digital Grade 12	\$300.00			7
Total for Teacher Resource Package		\$0.00			
Total for Grade 12		\$57,323.25			
Professional Services					
Getting Started					
9781328593993	2020 Into Reading Getting Started Live Online Version 1 2 Hour Grades K-6 In this course, teachers have meaningful hands-on or virtual experiences to learn about their program's organization, design, and support resources essential to implementing the program and its related technology. LEARNING OUTCOMES: Enrich daily instruction by applying knowledge of the program organization and pedagogy Support differentiation, assessment, and effective whole and small group instruction using HMH program resources and instructional tools Enhance instructional delivery and student learning using HMH® technology	\$800.00	1	\$800.00	
9781328594143	2020 Into Literature Getting Started Live Online Version 1 2 Hour Grades 6-12 Participants engage in a variety of hands-on experiences to learn about the organization, design, and resources of Into Literature. Through direct instruction, guided practice, and cooperative exploration, participants will experience the program's resources both from a student and teacher perspective. The goal is to build deeper understanding and confidence to begin implementing Into Literature in their respective learning environments.	\$800.00	1	\$800.00	
		<p align="center">Attention: Kimberley Bradley kbradley1@garycsc.k12.in.us</p> <p align="center">Customer Experience 9400 South Park Center Loop Orlando, FL 32819 FAX: 800-269-5232 k12orders@hnhco.com</p>			
007963858	Sold:0000100048 Ship:0000100048	Page 10 of 15	Please submit this form with your purchase order		

Date of Proposal: 3/22/2021

**Proposal for
Gary Cmty School Corporation**

Expiration Date: 5/6/2021

ISBN	Title	Price	Quantity	Value of All Material	Free Materials Quantity
9780358242451	Waggle ELA Getting Started 2-Hour Live Online Grade 2-8 Getting Started live online provides the hows and whys of Waggle through exploration and collaborative experiences. Teachers will spend time digging into the program to gain a real-world application of Waggle and how best to use it in their classroom. The goal is to build deeper understanding and confidence to begin implementing Waggle.	\$800.00	1	\$800.00	
9780358338758	Amira Assessment Getting Started 2 Hour Live Online Getting Started live online provides the hows and whys of Amira through exploration and collaborative experiences. Teachers will spend time digging into the program to gain a real-world application of Amira and how best to use it in their classroom. The goal is to build deeper understanding and confidence to begin implementing Amira.	\$800.00	1	\$800.00	
9780358052852	Writable Getting Started Live Online 2 Hour Grades 3-12 During the Getting Started live online teachers dig into Writable's online suite of tools that students use to engage in purposeful writing and feedback. They will explore the robust supports built into Writable such as editable rubrics, streamlined grading, revision tools and intuitive reports allowing them to help their students flourish as writers.	\$800.00	1	\$800.00	
Total for Getting Started		\$4,000.00			
Continued Support Year 1					
9780358524274	Into Reading Online Coaching Membership Version 1 Grades K-6 Online Coaching Membership (32, 30-min sessions - up to 20 participants and Coaching Studio licenses)	\$14,500.00	1	\$14,500.00	
9780358524267	Into Literature Online Coaching Membership Version 1 Grades 6-8 Online Coaching Membership (32, 30-min sessions - up to 20 participants and Coaching Studio licenses)	\$14,500.00	1	\$14,500.00	
9780358141068	Into Literature Blended Coaching Bundle Grades 9-12	\$19,500.00	1	\$19,500.00	
Total for Continued Support Year 1		\$48,500.00			
Continued Support Year 2					
9781328593993	2020 Into Reading Getting Started Live Online Version 1 2 Hour Grades K-6 In this course, teachers have meaningful hands-on or virtual experiences to learn about their program's organization, design, and support resources essential to implementing the program and its related technology. LEARNING OUTCOMES: Enrich daily instruction by applying knowledge of the program organization and pedagogy Support differentiation, assessment, and effective whole and small group instruction using HMH program resources and instructional tools Enhance instructional delivery and student learning using HMH® technology	\$800.00	1	\$800.00	
9781328594143	2020 Into Literature Getting Started Live Online Version 1 2 Hour Grades 6-12 Participants engage in a variety of hands-on experiences to learn about the organization, design, and resources of Into Literature. Through direct instruction, guided practice, and cooperative exploration, participants will experience the program's resources both from a student and teacher perspective. The goal is to build deeper understanding and confidence to begin implementing Into Literature in their respective learning environments.	\$800.00	1	\$800.00	
9780358524274	Into Reading Online Coaching Membership Version 1 Grades K-6 Online Coaching Membership (32, 30-min sessions - up to 20 participants and Coaching Studio licenses)	\$14,500.00	1	\$14,500.00	
9780358524267	Into Literature Online Coaching Membership Version 1 Grades 6-8 Online Coaching Membership (32, 30-min sessions - up to 20 participants and Coaching Studio licenses)	\$14,500.00	1	\$14,500.00	
9780358141068	Into Literature Blended Coaching Bundle Grades 9-12 Online Coaching Membership	\$19,500.00	1	\$19,500.00	

Attention:
Kimberley Bradley
kbradley1@garycsc.k12.in.us

Customer Experience
9400 South Park Center Loop
Orlando, FL 32819
FAX: 800-269-5232
k12orders@hnhco.com

HMH Confidential and Proprietary

007963858 Sold:0000100048 Ship:0000100048

Page 11 of 15

Please submit this form with your purchase order

Date of Proposal: 3/22/2021

Proposal for Gary Cmty School Corporation

Expiration Date: 5/6/2021

ISBN	Title	Price	Quantity	Value of All Material	Free Materials Quantity
(32 online sessions for up to 20 participants)					
Total for Continued Support Year 2		\$50,100.00			
Continued Support Year 3					
9781328593993	2020 Into Reading Getting Started Live Online Version 1 2 Hour Grades K-6 In this course, teachers have meaningful hands-on or virtual experiences to learn about their program's organization, design, and support resources essential to implementing the program and its related technology. LEARNING OUTCOMES: Enrich daily instruction by applying knowledge of the program organization and pedagogy Support differentiation, assessment, and effective whole and small group instruction using HMH program resources and instructional tools Enhance instructional delivery and student learning using HMH® technology	\$800.00	1	\$800.00	
9781328594143	2020 Into Literature Getting Started Live Online Version 1 2 Hour Grades 6-12 Participants engage in a variety of hands-on experiences to learn about the organization, design, and resources of Into Literature. Through direct instruction, guided practice, and cooperative exploration, participants will experience the program's resources both from a student and teacher perspective. The goal is to build deeper understanding and confidence to begin implementing Into Literature in their respective learning environments.	\$800.00	1	\$800.00	
9780358524274	Into Reading Online Coaching Membership Version 1 Grades K-6 Online Coaching Membership (32, 30-min sessions - up to 20 participants and Coaching Studio licenses)	\$14,500.00	1	\$14,500.00	
9780358524267	Into Literature Online Coaching Membership Version 1 Grades 6-8 Online Coaching Membership (32, 30-min sessions - up to 20 participants and Coaching Studio licenses)	\$14,500.00	1	\$14,500.00	
9780358141068	Into Literature Blended Coaching Bundle Grades 9-12 Online Coaching Membership (32 online sessions for up to 20 participants)	\$19,500.00	1	\$19,500.00	
Total for Continued Support Year 3		\$50,100.00			
Continued Support Year 4					
9781328593993	2020 Into Reading Getting Started Live Online Version 1 2 Hour Grades K-6 In this course, teachers have meaningful hands-on or virtual experiences to learn about their program's organization, design, and support resources essential to implementing the program and its related technology. LEARNING OUTCOMES: Enrich daily instruction by applying knowledge of the program organization and pedagogy Support differentiation, assessment, and effective whole and small group instruction using HMH program resources and instructional tools Enhance instructional delivery and student learning using HMH® technology	\$800.00	1	\$800.00	
9781328594143	2020 Into Literature Getting Started Live Online Version 1 2 Hour Grades 6-12 Participants engage in a variety of hands-on experiences to learn about the organization, design, and resources of Into Literature. Through direct instruction, guided practice, and cooperative exploration, participants will experience the program's resources both from a student and teacher perspective. The goal is to build deeper understanding and confidence to begin implementing Into Literature in their respective learning environments.	\$800.00	1	\$800.00	
9780358524274	Into Reading Online Coaching Membership Version 1 Grades K-6 Online Coaching Membership (32, 30-min sessions - up to 20 participants and Coaching Studio licenses)	\$14,500.00	1	\$14,500.00	
9780358524267	Into Literature Online Coaching Membership Version 1 Grades 6-8 Online Coaching Membership (32, 30-min sessions - up to 20 participants and Coaching Studio licenses)	\$14,500.00	1	\$14,500.00	
Attention: Kimberley Bradley kbradley1@garycsc.k12.in.us		Customer Experience 9400 South Park Center Loop Orlando, FL 32819 FAX: 800-269-5232 k12orders@hnhco.com			
HMH Confidential and Proprietary					
007963858	Sold:0000100048 Ship:0000100048	Page 12 of 15		Please submit this form with your purchase order	

Date of Proposal: 3/22/2021

Proposal for Gary Cmty School Corporation

Expiration Date: 5/6/2021

ISBN	Title	Price	Quantity	Value of All Material	Free Materials Quantity
9780358141068	Into Literature Blended Coaching Bundle Grades 9-12 Online Coaching Membership (32 online sessions for up to 20 participants)	\$19,500.00	1	\$19,500.00	
Total for Continued Support Year 4		\$50,100.00			
Continued Support Year 5					
9781328593993	2020 Into Reading Getting Started Live Online Version 1 2 Hour Grades K-6 In this course, teachers have meaningful hands-on or virtual experiences to learn about their program's organization, design, and support resources essential to implementing the program and its related technology. LEARNING OUTCOMES: Enrich daily instruction by applying knowledge of the program organization and pedagogy Support differentiation, assessment, and effective whole and small group instruction using HMH program resources and instructional tools Enhance instructional delivery and student learning using HMH® technology	\$800.00	1	\$800.00	
9781328594143	2020 Into Literature Getting Started Live Online Version 1 2 Hour Grades 6-12 Participants engage in a variety of hands-on experiences to learn about the organization, design, and resources of Into Literature. Through direct instruction, guided practice, and cooperative exploration, participants will experience the program's resources both from a student and teacher perspective. The goal is to build deeper understanding and confidence to begin implementing Into Literature in their respective learning environments.	\$800.00	1	\$800.00	
9780358524274	Into Reading Online Coaching Membership Version 1 Grades K-6 Online Coaching Membership (32, 30-min sessions - up to 20 participants and Coaching Studio licenses)	\$14,500.00	1	\$14,500.00	
9780358524287	Into Literature Online Coaching Membership Version 1 Grades 6-8 Online Coaching Membership (32, 30-min sessions - up to 20 participants and Coaching Studio licenses)	\$14,500.00	1	\$14,500.00	
9780358141068	Into Literature Blended Coaching Bundle Grades 9-12 Online Coaching Membership (32 online sessions for up to 20 participants)	\$19,500.00	1	\$19,500.00	
Total for Continued Support Year 5		\$50,100.00			
Continued Support Year 6					
9781328593993	2020 Into Reading Getting Started Live Online Version 1 2 Hour Grades K-6 In this course, teachers have meaningful hands-on or virtual experiences to learn about their program's organization, design, and support resources essential to implementing the program and its related technology. LEARNING OUTCOMES: Enrich daily instruction by applying knowledge of the program organization and pedagogy Support differentiation, assessment, and effective whole and small group instruction using HMH program resources and instructional tools Enhance instructional delivery and student learning using HMH® technology	\$800.00	1	\$800.00	
9781328594143	2020 Into Literature Getting Started Live Online Version 1 2 Hour Grades 6-12 Participants engage in a variety of hands-on experiences to learn about the organization, design, and resources of Into Literature. Through direct instruction, guided practice, and cooperative exploration, participants will experience the program's resources both from a student and teacher perspective. The goal is to build deeper understanding and confidence to begin implementing Into Literature in their respective learning environments.	\$800.00	1	\$800.00	
9780358524274	Into Reading Online Coaching Membership Version 1 Grades K-6 Online Coaching Membership (32, 30-min sessions - up to 20 participants and Coaching Studio licenses)	\$14,500.00	1	\$14,500.00	

Attention:
Kimberley Bradley
kbradley1@garycsc.k12.in.us

Customer Experience
9400 South Park Center Loop
Orlando, FL 32819
FAX: 800-269-5232
k12orders@hnhco.com

HMH Confidential and Proprietary

007963858 Sold:0000100048 Ship:0000100048

Page 13 of 15

Please submit this form with your purchase order

Date of Proposal: 3/22/2021

Proposal for
Gary Cmty School Corporation

Expiration Date: 5/6/2021

ISBN	Title	Price	Quantity	Value of All Material	Free Materials Quantity
9780358524267	Into Literature Online Coaching Membership Version 1 Grades 6-8 Online Coaching Membership (32, 30-min sessions - up to 20 participants and Coaching Studio licenses)	\$14,500.00	1	\$14,500.00	
9780358141068	Into Literature Blended Coaching Bundle Grades 9-12 Online Coaching Membership (32 online sessions for up to 20 participants)	\$19,500.00	1	\$19,500.00	
Total for Continued Support Year 6		\$50,100.00			
Total for Professional Services		\$303,000.00			

<i>Total Savings:</i>	\$374,046.00
<i>Subtotal Purchase Amount:</i>	\$1,389,560.25
<i>Shipping & Handling:</i>	\$49,772.42
<i>Sales Tax:</i>	\$0.00
Total Cost of Proposal (PO Amount):	\$1,439,332.67

Attention:
 Kimberley Bradley
 kbradley1@garycsc.k12.in.us

Customer Experience
 9400 South Park Center Loop
 Orlando, FL 32819
 FAX: 800-269-5232
 k12orders@hnhco.com

HMH Confidential and Proprietary

007963858

Sold:0000100048 Ship:0000100048

Page 14 of 15

Please submit this form with your purchase order

Date of Proposal: 3/22/2021

**Proposal for
Gary Cmty School Corporation**

Expiration Date: 5/6/2021

Total Cost of Proposal (PO Amount): \$1,439,332.67

Thank you for considering HMH as your partner. We are committed to providing an excellent experience and delivering ongoing, high-quality service to our customers. To meet these goals, we want to ensure you are aware of the below Terms of Purchase. These terms help us process your order quickly, efficiently, and accurately, ensuring successful delivery and implementation of our solutions.

- Please return this cost proposal with your signed purchase order that matches product, prices and shipping charges.
- Provide the exact address for *delivery* of print materials. The shipping address may be your district warehouse or individual school sites, but it is essential that this is accurate.
- Please supply the name of each important district point of contact for all aspects of the solution including their direct contact information (email/phone):
 - o Point of Contact for Print materials
 - o Point of Contact for Digital materials
 - o Point of Contact for Scheduling Professional Development
- Please confirm that we have the correct 'Ship to' and 'Sold to' information on the cost proposal.

Ship to:	Sold to:
Gary Community School Corporation	Gary Community School Corporation
- Please provide funding start and end dates
- Please note that all products and services will be billed upon the processing of your purchase order.
- Our payment terms are 30 days from the invoice date.
- Print subscription material quantities may be adjusted across grades for like products, to accommodate enrollment fluctuations, quantities cannot be adjusted between different programs or copyrights.
- Our shipping terms are FOB shipping point. The shipping term for your proposal is Shipping Point.
- Should any of these Terms of Sale conflict with any preprinted terms on your purchase order, the HMH terms of service shall apply.

Thank you in advance for supplying us with the necessary information at time of purchase. Our goal is to ensure your success throughout the duration of this agreement, which starts with a highly successful delivery of our solution.

For greater detail, the complete Terms of Purchase may be reviewed here: <http://www.hmhco.com/common/terms-conditions>

Date of Proposal: 3/22/2021

Proposal Expiration Date: 5/6/2021



Houghton Mifflin Harcourt

Attention:
Kimberley Bradley
kbradley1@garycsc.k12.in.us

Customer Experience
9400 South Park Center Loop
Orlando, FL 32819
FAX: 800-269-5232
k12orders@hnhco.com

HMH Confidential and Proprietary

007963858

Sold:0000100048

Ship:0000100048

Page 15 of 15

Please submit this form with your purchase order

SAVVAS

Gary Community School Corporation



Ms. Kim Bradley
Chief Academic Officer
Gary Community School Corporation
9th Ave & Gerry St
Gary, IN 46406
United States

Quote Number: 144095-2
Quote Creation Date: 03-23-2021
Quote Expiration Date: 09-30-2021
Quote Release: 2

Gary CSC ELA_myView K-5 + PD

Price Quote Summary

Solution	Base Amount	Free Amount	Total
myView Literacy	\$ 526,986.40	\$ 396,836.73	\$ 526,986.40
Solution Subtotal	\$ 526,986.40	\$ 396,836.73	\$ 526,986.40
Shipping & Handling			\$ 44,262.53
Total			\$ 571,248.93

Price Quote Detail

ISBN	Description	Price	Free Qty	Charged Qty	Free Amount	Total Charged
myView Literacy						
myView Literacy ©2020 - Grade K						
9780134963471	MYVIEW LITERACY 2020 SILVER CONSUMABLE STUDENT PACKAGE WITH DIGITAL COURSEWARE 6-YEAR LICENSE GRADE K	\$138.47	0	390	\$0.00	\$54,003.30
9780328993901	MYVIEW LITERACY 2020 MYFOCUS INTERVENTION TEACHING GUIDE LEVEL A	\$299.47	17	0	\$5,090.99	\$0.00
9780134904740	MYVIEW LITERACY 2020 SMALL GROUP GUIDE GRADE K	\$105.47	17	0	\$1,792.99	\$0.00
9780328991396	MYVIEW LITERACY 2020 SONGS & POEMS BIG BOOK GRADE K	\$75.47	17	0	\$1,282.99	\$0.00
9780134941677	MYVIEW LITERACY 2020 BIG BOOK PACKAGE GRADE K	\$929.47	17	0	\$15,800.99	\$0.00

Gary Community School Corporation

ISBN	Description	Price	Free Qty	Charged Qty	Free Amount	Total Charged
9780328983508	MYVIEW LITERACY 2020 FOUNDATIONAL SKILLS KIT GRADE K	\$1,213.47	17	0	\$20,628.99	\$0.00
9780134921181	MYVIEW LITERACY 2020 LEVELED READER BOOKSHELF COLLECTION GRADE K	\$2,270.47	5	12	\$11,352.35	\$27,245.64
9780134963877	MYVIEW LITERACY 2020 TEACHER ASSESSMENT PACKAGE GRADE K	\$249.47	17	0	\$4,240.99	\$0.00
myView Literacy @2020 - Grade K Subtotal					\$ 60,190.29	\$ 81,248.94

myView Literacy @2020 - Grade 1

9780134963488	MYVIEW LITERACY 2020 SILVER CONSUMABLE STUDENT PACKAGE WITH DIGITAL COURSEWARE 6-YEAR LICENSE GRADE 1	\$138.47	0	470	\$0.00	\$65,080.90
9780134904764	MYVIEW LITERACY 2020 SMALL GROUP GUIDE GRADE 1	\$105.47	18	0	\$1,898.46	\$0.00
9780328991402	MYVIEW LITERACY 2020 SONGS & POEMS BIG BOOK GRADE 1	\$75.47	18	0	\$1,358.46	\$0.00
9780328983513	MYVIEW LITERACY 2020 FOUNDATIONAL SKILLS KIT GRADE 1	\$1,102.47	18	0	\$19,844.46	\$0.00
9780134921198	MYVIEW LITERACY 2020 LEVELED READER BOOKSHELF COLLECTION GRADE 1	\$2,499.47	5	13	\$12,497.35	\$32,493.11
9780134934358	MYVIEW LITERACY 2020 MYFOCUS INTERVENTION PACKAGE LEVEL B	\$419.47	18	0	\$7,550.46	\$0.00
9780134963884	MYVIEW LITERACY 2020 TEACHER ASSESSMENT PACKAGE GRADE 1	\$325.47	18	0	\$5,858.46	\$0.00
myView Literacy @2020 - Grade 1 Subtotal					\$ 49,007.65	\$ 97,574.01

myView Literacy @2020 - Grade 2

9780134968278	MYVIEW LITERACY 2020 GOLD CONSUMABLE STUDENT PACKAGE WITH DIGITAL COURSEWARE 6-YEAR LICENSE GRADE 2	\$157.47	0	400	\$0.00	\$62,988.00
---------------	---	----------	---	-----	--------	-------------

Gary Community School Corporation

ISBN	Description	Price	Free Qty	Charged Qty	Free Amount	Total Charged
9780134904771	MYVIEW LITERACY 2020 SMALL GROUP GUIDE GRADE 2	\$105.47	17	0	\$1,792.99	\$0.00
9780328983520	MYVIEW LITERACY 2020 FOUNDATIONAL SKILLS KIT GRADE 2	\$727.47	17	0	\$12,366.99	\$0.00
9780134921204	MYVIEW LITERACY 2020 LEVELED READER BOOKSHELF COLLECTION GRADE 2	\$2,199.47	5	12	\$10,997.35	\$26,393.64
9780134934365	MYVIEW LITERACY 2020 MYFOCUS INTERVENTION PACKAGE LEVEL C	\$419.47	17	0	\$7,130.99	\$0.00
9780134963891	MYVIEW LITERACY 2020 TEACHER ASSESSMENT PACKAGE GRADE 2	\$399.47	17	0	\$6,790.99	\$0.00
myView Literacy ©2020 - Grade 2 Subtotal					\$ 39,079.31	\$ 89,381.64
myView Literacy ©2020 - Grade 3						
9780134968292	MYVIEW LITERACY 2020 GOLD CONSUMABLE STUDENT PACKAGE WITH DIGITAL COURSEWARE 6-YEAR LICENSE GRADE 3	\$157.47	0	425	\$0.00	\$66,924.75
9780134904788	MYVIEW LITERACY 2020 SMALL GROUP GUIDE GRADE 3	\$105.47	18	0	\$1,898.46	\$0.00
9780134921211	MYVIEW LITERACY 2020 LEVELED READER BOOKSHELF COLLECTION GRADE 3	\$1,899.47	5	13	\$9,497.35	\$24,693.11
9780134934372	MYVIEW LITERACY 2020 MYFOCUS INTERVENTION PACKAGE LEVEL D	\$419.47	18	0	\$7,550.46	\$0.00
9780134963907	MYVIEW LITERACY 2020 TEACHER ASSESSMENT PACKAGE GRADE 3	\$399.47	18	0	\$7,190.46	\$0.00
myView Literacy ©2020 - Grade 3 Subtotal					\$ 26,136.73	\$ 91,617.86
myView Literacy ©2020 - Grade 4						
9780134968308	MYVIEW LITERACY 2020 GOLD CONSUMABLE STUDENT PACKAGE WITH DIGITAL COURSEWARE 6-YEAR LICENSE GRADE 4	\$157.47	0	360	\$0.00	\$56,689.20

Gary Community School Corporation

ISBN	Description	Price	Free Qty	Charged Qty	Free Amount	Total Charged
9780134904795	MYVIEW LITERACY 2020 SMALL GROUP GUIDE GRADE 4	\$105.47	16	0	\$1,687.52	\$0.00
9780134921228	MYVIEW LITERACY 2020 LEVELED READER BOOKSHELF COLLECTION GRADE 4	\$1,899.47	5	11	\$9,487.35	\$20,894.17
9780134934396	MYVIEW LITERACY 2020 MYFOCUS INTERVENTION PACKAGE LEVEL E	\$419.47	16	0	\$6,711.52	\$0.00
9780134963914	MYVIEW LITERACY 2020 TEACHER ASSESSMENT PACKAGE GRADE 4	\$399.47	16	0	\$6,391.52	\$0.00
myView Literacy ©2020 - Grade 4 Subtotal					\$ 24,287.91	\$ 77,583.37
myView Literacy ©2020 - Grade 5						
9780134968315	MYVIEW LITERACY 2020 GOLD CONSUMABLE STUDENT PACKAGE WITH DIGITAL COURSEWARE 6-YEAR LICENSE GRADE 5	\$157.47	0	400	\$0.00	\$62,988.00
9780134904801	MYVIEW LITERACY 2020 SMALL GROUP GUIDE GRADE 5	\$105.47	19	0	\$2,003.93	\$0.00
9780134921235	MYVIEW LITERACY 2020 LEVELED READER BOOKSHELF COLLECTION GRADE 5	\$1,899.47	5	14	\$9,487.35	\$26,592.58
9780134934402	MYVIEW LITERACY 2020 MYFOCUS INTERVENTION PACKAGE LEVEL F	\$419.47	19	0	\$7,969.93	\$0.00
9780134963921	MYVIEW LITERACY 2020 TEACHER ASSESSMENT PACKAGE GRADE 5	\$399.47	19	0	\$7,589.93	\$0.00
myView Literacy ©2020 - Grade 5 Subtotal					\$ 27,061.14	\$ 89,580.58
Additional myView Resources - Grade K						
9781428453623	MYVIEW LITERACY 2020 READING ROUTINES COMPANION GRADE K	\$199.47	17	0	\$3,390.99	\$0.00
Additional myView Resources - Grade K Subtotal					\$ 3,390.99	\$ 0.00

Gary Community School Corporation

ISBN	Description	Price	Free Qty	Charged Qty	Free Amount	Total Charged
Additional myView Resources - Grade 1						
9781428453630	MYVIEW LITERACY 2020 READING ROUTINES COMPANION GRADE 1	\$199.47	18	0	\$3,590.46	\$0.00
Additional myView Resources - Grade 1 Subtotal					\$ 3,590.46	\$ 0.00
Additional myView Resources - Grade 2						
9781428453647	MYVIEW LITERACY 2020 READING ROUTINES COMPANION GRADE 2	\$99.47	17	0	\$1,690.99	\$0.00
Additional myView Resources - Grade 2 Subtotal					\$ 1,690.99	\$ 0.00
Additional myView Resources - Grade 3						
9781428453654	MYVIEW LITERACY 2020 READING ROUTINES COMPANION GRADE 3	\$99.47	18	0	\$1,790.46	\$0.00
Additional myView Resources - Grade 3 Subtotal					\$ 1,790.46	\$ 0.00
Additional myView Resources - Grade 4						
9781428453661	MYVIEW LITERACY 2020 READING ROUTINES COMPANION GRADE 4	\$99.47	16	0	\$1,591.52	\$0.00
Additional myView Resources - Grade 4 Subtotal					\$ 1,591.52	\$ 0.00
Additional myView Resources - Grade 5						
9781428453678	MYVIEW LITERACY 2020 READING ROUTINES COMPANION GRADE 5	\$99.47	19	0	\$1,889.93	\$0.00
Additional myView Resources - Grade 5 Subtotal					\$ 1,889.93	\$ 0.00
myView Literacy ©2020 - Other Teacher Edition Packages (IN)						
9780134977911	MYVIEW LITERACY 2020 INDIANA TEACHERS EDITION PACKAGE GRADE K	\$1,496.47	17	0	\$25,439.99	\$0.00

Gary Community School Corporation

ISBN	Description	Price	Free Qty	Charged Qty	Free Amount	Total Charged
9780134977928	MYVIEW LITERACY 2020 INDIANA TEACHERS EDITION PACKAGE GRADE 1	\$1,496.47	18	0	\$26,936.46	\$0.00
9780134977942	MYVIEW LITERACY 2020 INDIANA TEACHERS EDITION PACKAGE GRADE 2	\$1,496.47	17	0	\$25,439.99	\$0.00
9780134977959	MYVIEW LITERACY 2020 INDIANA TEACHERS EDITION PACKAGE GRADE 3	\$1,496.47	18	0	\$26,936.46	\$0.00
9780134977966	MYVIEW LITERACY 2020 INDIANA TEACHERS EDITION PACKAGE GRADE 4	\$1,496.47	16	0	\$23,943.52	\$0.00
9780134977973	MYVIEW LITERACY 2020 INDIANA TEACHERS EDITION PACKAGE GRADE 5	\$1,496.47	19	0	\$28,432.93	\$0.00
myView Literacy @2020 - Other Teacher Edition Packages (IN) Subtotal					\$ 157,129.35	\$ 0.00
myView Literacy Subtotal					\$ 396,836.73	\$ 526,986.40
Solution Subtotal					\$ 396,836.73	\$ 526,986.40
Shipping and Handling						\$ 44,262.53
Total						\$ 571,248.93

Optional Section

ISBN	Solution	UOM	Term	List Price	Quantity	Base Amount	Total
1							
0000000116482	LITERACY: PD EXPRESS 50-DAY	EA		\$141,750.00	1	\$141,750.00	\$141,750.00
2							
0000000123890	MYVIEW PARTNERSHIP PLUS	EA		\$180,249.97	1	\$180,249.97	\$180,249.97

Gary Community School Corporation

Savvas Learning Company LLC Terms and Conditions

To place your order please submit a copy of this price quote with your Purchase Order, include the Quote Number on your Purchase Order, and include any other required documentation. You may send the order documents using an electronic form or by mail. Please submit your PO and price via one of the following methods:

e-Form: <http://support.savvas.com/support/s/contactsupport>

Mail: PO Box 6820, Chandler, AZ 85246

Savvas does not accept Credit Card information via postal mail, facsimile, or email. Credit Card information will only be accepted via phone, eCommerce, or OASIS.

For questions regarding your order please call Customer Service: 1-800-848-9500.

Price quote: This is a price quote for the customer's convenience only, and not an offer to contract. All quotes are subject to review and final acceptance by an authorized representative of Savvas at its offices. Savvas reserves the right to correct typographical, computational or other errors. Savvas' standard terms are net 30 days unless otherwise specified. All pricing is in US Dollars unless otherwise specified. Pricing calculations use multiple decimal places to determine the most accurate extended pricing but are represented in standard currency format. The breakdown of the fees set forth in this quotation is considered Savvas proprietary information and not subject to disclosure by the customer.

Shipping & handling charges (where applicable) are shown on the quote. S&H rates quoted are for standard ground transportation and may not reflect account contracted rates. If expedited shipping is requested, actual charges may be higher. For orders picked up at the Savvas warehouse by the customer or a third party carrier contracted by the customer, a 2% handling charge will be applied to shippable items. The 2% charge will show up on the customer proposal and invoice as a S&H charge.

Taxes: All pricing in this quote is exclusive of any applicable sales, use or other similar taxes or duties. The customer is responsible for any such taxes or duties that may apply; if the customer is tax exempt, evidence of such tax exemption must be provided. Estimated tax may be provided solely for customer convenience. The amount indicated is only an estimate and is intended to be helpful for budgeting purposes. The actual amount of sales tax assessed at the time of invoicing may be more or less.

Platforms: Savvas, and any third party for which Savvas serves as the sales agent or distributor, reserve the right to change and/or update technology platforms, including possible edition updates to customers during the term of access. Customers will be notified of any change prior to the beginning of the new school year.

Return Policy: If you are not entirely satisfied with any of our products, then you may, within six months from the date of purchase, return all materials still in new, unused, salable condition for a full refund, credit, or replacement. All returned materials must be shipped back to Savvas within 30 days of receiving the Return Materials Authorization. All materials sold in a set or a package must be returned complete as originally sold. Materials that were provided gratis must be returned proportionate to the purchased items being returned for refund or credit.

Consumable Worktexts: Subsequent year consumable worktexts will ship each year on the order date of the original order for the duration of their license. Worktexts will ship to the location listed on the original order. Quantities for each grade level and title will remain consistent each year. Changes to quantities of titles previously ordered, shipping location changes, or any other changes to consumable worktext shipments must be made 4 weeks prior to the original order date. Changes should be made using the e-form: <https://k12.savvas.com/worktext-subscription>.

Annual subscriptions for iLit and Successmaker: Products automatically renew on the anniversary date of the original purchase and will be invoiced accordingly unless otherwise specified. If you wish to cancel, please let us know in writing prior to the date of renewal by completing the customer service request form which you can access here: <https://support.savvas.com/support/s/customer-service-support-form>.

Technical support services are included with purchase of Savvas digital products eform: <https://support.savvas.com/support/s/k12-curriculum-support-form> phone: 1-800-848-9500

MySavvas Training which provides online access to on-demand tutorials and interactive webinar sessions is included with purchase of products. <https://mysavvastraining.com>

Gary Community School Corporation

SAVVAS

Ms. Kim Bradley
Chief Academic Officer
Gary Community School Corporation
9th Ave & Gerry St
Gary, IN 46406
United States

Quote Number: 144166-1

Quote Creation Date: 03-23-2021

Quote Expiration Date: 09-30-2021

Quote Release: 1

Gary CSC myPerspectives 6th

Price Quote Summary

Solution	Base Amount	Total
myPerspectives English Language	\$ 65,987.76	\$ 65,987.76
Solution Subtotal	\$ 65,987.76	\$ 65,987.76
	Shipping & Handling	\$ 4,834.90
	Total	\$ 70,822.66

Price Quote Detail

ISBN	Description	Price	Charged Qty	Total Charged
myPerspectives English Language Arts				
2022 myPerspectives ELA - Grade 6				
9781418371029	MYPERSPECTIVES 2022 TEACHERS EDITION GRADE 6	\$149.97	8	\$1,199.76
2022 myPerspectives ELA - Grade 6 Subtotal				\$ 1,199.76
myPerspectives ELA Indiana ©2017 - Grade 6				
9781418334291	MYPERSPECTIVES ENGLISH LANGUAGE ARTS 2017 INDIANA STUDENT EDITION (CONSUMABLE) + 4 NOVELS + 6-YEAR SUBSCRIPTION+ 6-YEAR DIGITAL COURSEWARE GRADE 6	\$131.97	400	\$52,788.00
myPerspectives ELA Indiana ©2017 - Grade 6 Subtotal				\$ 52,788.00
2022 myPerspectives ELA - Revision Assistant Stand Alone ISBNs				

Gary Community School Corporation

ISBN	Description	Price	Charged Qty	Total Charged
9781418385059	MY PERSPECTIVE ENGLISH LANGUAGE ARTS 2017 REVISION ASSISTANT 6-YEAR LICENSE GRADES 6/12	\$30.00	400	\$12,000.00
2022 myPerspectives ELA - Revision Assistant Stand Alone ISBNs Subtotal				\$ 12,000.00
myPerspectives English Language Arts Subtotal				\$ 65,987.76
Solution Subtotal				\$ 65,987.76
Shipping and Handling				\$ 4,834.90
Total				\$ 70,822.66

Gary Community School Corporation

Savvas Learning Company LLC Terms and Conditions

To place your order please submit a copy of this price quote with your Purchase Order, include the Quote Number on your Purchase Order, and include any other required documentation. You may send the order documents using an electronic form or by mail. Please submit your PO and price via one of the following methods:

e-Form: <http://support.savvas.com/support/s/contactsupport>

Mail: PO Box 6820, Chandler, AZ 85246

Savvas does not accept Credit Card information via postal mail, facsimile, or email. Credit Card information will only be accepted via phone, eCommerce, or OASIS.

For questions regarding your order please call Customer Service: 1-800-848-9500.

Price quote: This is a price quote for the customer's convenience only, and not an offer to contract. All quotes are subject to review and final acceptance by an authorized representative of Savvas at its offices. Savvas reserves the right to correct typographical, computational or other errors. Savvas' standard terms are net 30 days unless otherwise specified. All pricing is in US Dollars unless otherwise specified. Pricing calculations use multiple decimal places to determine the most accurate extended pricing but are represented in standard currency format. The breakdown of the fees set forth in this quotation is considered Savvas proprietary information and not subject to disclosure by the customer.

Shipping & handling charges (where applicable) are shown on the quote. S&H rates quoted are for standard ground transportation and may not reflect account contracted rates. If expedited shipping is requested, actual charges may be higher. For orders picked up at the Savvas warehouse by the customer or a third party carrier contracted by the customer, a 2% handling charge will be applied to shippable items. The 2% charge will show up on the customer proposal and invoice as a S&H charge.

Taxes: All pricing in this quote is exclusive of any applicable sales, use or other similar taxes or duties. The customer is responsible for any such taxes or duties that may apply; if the customer is tax exempt, evidence of such tax exemption must be provided. Estimated tax may be provided solely for customer convenience. The amount indicated is only an estimate and is intended to be helpful for budgeting purposes. The actual amount of sales tax assessed at the time of invoicing may be more or less.

Platforms: Savvas, and any third party for which Savvas serves as the sales agent or distributor, reserve the right to change and/or update technology platforms, including possible edition updates to customers during the term of access. Customers will be notified of any change prior to the beginning of the new school year.

Return Policy: If you are not entirely satisfied with any of our products, then you may, within six months from the date of purchase, return all materials still in new, unused, salable condition for a full refund, credit, or replacement. All returned materials must be shipped back to Savvas within 30 days of receiving the Return Materials Authorization. All materials sold in a set or a package must be returned complete as originally sold. Materials that were provided gratis must be returned proportionate to the purchased items being returned for refund or credit.

Consumable Worktexts: Subsequent year consumable worktexts will ship each year on the order date of the original order for the duration of their license. Worktexts will ship to the location listed on the original order. Quantities for each grade level and title will remain consistent each year. Changes to quantities of titles previously ordered, shipping location changes, or any other changes to consumable worktext shipments must be made 4 weeks prior to the original order date. Changes should be made using the e-form: <https://k12.savvas.com/worktext-subscription>.

Annual subscriptions for iLit and Successmaker: Products automatically renew on the anniversary date of the original purchase and will be invoiced accordingly unless otherwise specified. If you wish to cancel, please let us know in writing prior to the date of renewal by completing the customer service request form which you can access here: <https://support.savvas.com/support/s/customer-service-support-form>.

Technical support services are included with purchase of Savvas digital products eform: <https://support.savvas.com/support/s/k12-curriculum-support-form> phone: 1-800-848-9500

MySavvas Training which provides online access to on-demand tutorials and interactive webinar sessions is included with purchase of products. <https://mysavvastraining.com>

Gary Community School Corporation

SAVVAS

Ms. Kim Bradley
 Chief Academic Officer
 Gary Community School Corporation
 9th Ave & Gerry St
 Gary, IN 46406
 United States

Quote Number: 144185-2

Quote Creation Date: 03-29-2021

Quote Expiration Date: 09-30-2021

Quote Release: 2

Price Quote Summary

Solution	Base Amount	Free Amount	Total
Additional Literacy Professional	\$ 141,750.00		\$ 141,750.00
myPerspectives English Language	\$ 64,500.00	\$ 4,499.10	\$ 64,500.00
Solution Subtotal	\$ 206,250.00	\$ 4,499.10	\$ 206,250.00
Shipping & Handling			\$ 0.00
Total			\$ 206,250.00

Price Quote Detail

ISBN	Description	Price	Free Qty	Charged Qty	Free Amount	Total Charged
Additional Literacy Professional Development						
Additional Literacy Professional Development - ELA PD Express						
0000000116482	LITERACY: PD EXPRESS 50-DAY	\$141,750.00	0	1	\$0.00	\$141,750.00
Additional Literacy Professional Development - ELA PD Express Subtotal						\$ 141,750.00
Additional Literacy Professional Development Subtotal						\$ 141,750.00
myPerspectives English Language Arts						
2022 myPerspectives ELA - Grade 7						
9781418371036	MYPERSPECTIVES 2022 TEACHERS EDITION GRADE 7	\$149.97	5	0	\$749.85	\$0.00
2022 myPerspectives ELA - Grade 7 Subtotal					\$ 749.85	\$ 0.00

Gary Community School Corporation

ISBN	Description	Price	Free Qty	Charged Qty	Free Amount	Total Charged
2022 myPerspectives ELA - Grade 8						
9781418371043	MYPERSPECTIVES 2022 TEACHERS EDITION GRADE 8	\$149.97	5	0	\$749.85	\$0.00
2022 myPerspectives ELA - Grade 8 Subtotal					\$ 749.85	\$ 0.00
2022 myPerspectives ELA - Grade 9						
9781418371050	MYPERSPECTIVES 2022 TEACHERS EDITION GRADE 9	\$149.97	5	0	\$749.85	\$0.00
2022 myPerspectives ELA - Grade 9 Subtotal					\$ 749.85	\$ 0.00
2022 myPerspectives ELA - Grade 10						
9781418371067	MYPERSPECTIVES 2022 TEACHERS EDITION GRADE 10	\$149.97	5	0	\$749.85	\$0.00
2022 myPerspectives ELA - Grade 10 Subtotal					\$ 749.85	\$ 0.00
2022 myPerspectives ELA - Grade 11						
9781418371074	MYPERSPECTIVES 2022 TEACHERS EDITION GRADE 11	\$149.97	5	0	\$749.85	\$0.00
2022 myPerspectives ELA - Grade 11 Subtotal					\$ 749.85	\$ 0.00
2022 myPerspectives ELA - Grade 12						
9781418371081	MYPERSPECTIVES 2022 TEACHERS EDITION GRADE 12	\$149.97	5	0	\$749.85	\$0.00
2022 myPerspectives ELA - Grade 12 Subtotal					\$ 749.85	\$ 0.00
2022 myPerspectives ELA - Revision Assistant Stand Alone ISBNs						
9781418365059	MYPERSPECTIVE ENGLISH LANGUAGE ARTS 2017 REVISION ASSISTANT 6-YEAR LICENSE GRADES 6/12	\$30.00	0	2,150	\$0.00	\$64,500.00
2022 myPerspectives ELA - Revision Assistant Stand Alone ISBNs Subtotal					\$ 0.00	\$ 64,500.00

Gary Community School Corporation

ISBN	Description	Price	Free Qty	Charged Qty	Free Amount	Total Charged
myPerspectives English Language Arts Subtotal					\$ 4,499.10	\$ 64,500.00
Solution Subtotal					\$ 4,499.10	\$ 206,250.00
Shipping and Handling						\$ 0.00
Total						\$ 206,250.00

Optional Section

ISBN	Solution	UOM	Term	List Price	Quantity	Base Amount	Total
1							
0000000116492	LITERACY: PD EXPRESS 25-DAY	EA	1	\$74,750.00	1	\$74,750.00	\$74,750.00
2							
9781524700515	I AM NOT YOUR PERFECT MEXICAN DAUGHTER (PAPERBACK) 2019	EA	1	\$11.99	100	\$1,199.00	\$1,199.00
3							
9780147515827	BROWN GIRL DREAMING (PAPERBACK) COPYRIGHT 2016	EA	1	\$10.99	100	\$1,099.00	\$1,099.00
4							
9780316327916	I AM MALALA (YOUNG READER'S EDITION)	EA	1	\$10.99	100	\$1,099.00	\$1,099.00
5							
9780062662811	POET X (PAPERBACK) COPYRIGHT 2020	EA	1	\$12.99	100	\$1,299.00	\$1,299.00
6							
9780328963249	ILIT20 STUDENT LICENSE 6-YEAR	EA	1	\$192.00	200	\$38,400.00	\$38,400.00
7							
0000000125114	VIRTUAL ILIT PROGRAM ACTIVATION 2-HOURS	EA	1	\$500.00	1	\$500.00	\$500.00
8							
0000000125095	VIRTUAL ILIT PROFESSIONAL DEVELOPMENT TRAINING 1-HOUR	EA	1	\$550.00	2	\$1,100.00	\$1,100.00

Gary Community School Corporation

Savvas Learning Company LLC Terms and Conditions

To place your order please submit a copy of this price quote with your Purchase Order, include the Quote Number on your Purchase Order, and include any other required documentation. You may send the order documents using an electronic form or by mail. Please submit your PO and price via one of the following methods:

e-Form: <http://support.savvas.com/support/s/contactsupport>

Mail: PO Box 6820, Chandler, AZ 85246

Savvas does not accept Credit Card information via postal mail, facsimile, or email. Credit Card information will only be accepted via phone, eCommerce, or OASIS.

For questions regarding your order please call Customer Service: 1-800-848-9500

Price quote: This is a price quote for the customer's convenience only, and not an offer to contract. All quotes are subject to review and final acceptance by an authorized representative of Savvas at its offices. Savvas reserves the right to correct typographical, computational or other errors. Savvas' standard terms are net 30 days unless otherwise specified. All pricing is in US Dollars unless otherwise specified. Pricing calculations use multiple decimal places to determine the most accurate extended pricing but are represented in standard currency format. The breakdown of the fees set forth in this quotation is considered Savvas proprietary information and not subject to disclosure by the customer.

Shipping & handling charges (where applicable) are shown on the quote. S&H rates quoted are for standard ground transportation and may not reflect account contracted rates. If expedited shipping is requested, actual charges may be higher. For orders picked up at the Savvas warehouse by the customer or a third party carrier contracted by the customer, a 2% handling charge will be applied to shippable items. The 2% charge will show up on the customer proposal and invoice as a S&H charge.

Taxes: All pricing in this quote is exclusive of any applicable sales, use or other similar taxes or duties. The customer is responsible for any such taxes or duties that may apply; if the customer is tax exempt, evidence of such tax exemption must be provided. Estimated tax may be provided solely for customer convenience. The amount indicated is only an estimate and is intended to be helpful for budgeting purposes. The actual amount of sales tax assessed at the time of invoicing may be more or less.

Platforms: Savvas, and any third party for which Savvas serves as the sales agent or distributor, reserve the right to change and/or update technology platforms, including possible edition updates to customers during the term of access. Customers will be notified of any change prior to the beginning of the new school year.

Return Policy: If you are not entirely satisfied with any of our products, then you may, within six months from the date of purchase, return all materials still in new, unused, salable condition for a full refund, credit, or replacement. All returned materials must be shipped back to Savvas within 30 days of receiving the Return Materials Authorization. All materials sold in a set or a package must be returned complete as originally sold. Materials that were provided gratis must be returned proportionate to the purchased items being returned for refund or credit.

Consumable Worktexts: Subsequent year consumable worktexts will ship each year on the order date of the original order for the duration of their license. Worktexts will ship to the location listed on the original order. Quantities for each grade level and title will remain consistent each year. Changes to quantities of titles previously ordered, shipping location changes, or any other changes to consumable worktext shipments must be made 4 weeks prior to the original order date. Changes should be made using the e-form: <https://k12.savvas.com/worktext-subscription>.

Annual subscriptions for iLit and Successmaker: Products automatically renew on the anniversary date of the original purchase and will be invoiced accordingly unless otherwise specified. If you wish to cancel, please let us know in writing prior to the date of renewal by completing the customer service request form which you can access here: <https://support.savvas.com/support/s/customer-service-support-form>.

Technical support services are included with purchase of Savvas digital products eform: <https://support.savvas.com/support/s/k12-curriculum-support-form> phone: 1-800-848-9500

MySavvas Training which provides online access to on-demand tutorials and interactive webinar sessions is included with purchase of products. <https://mysavvastraining.com>