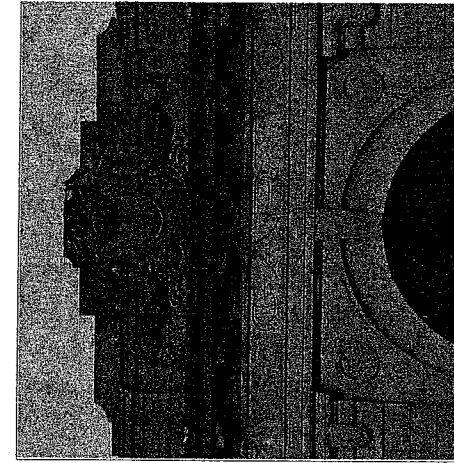
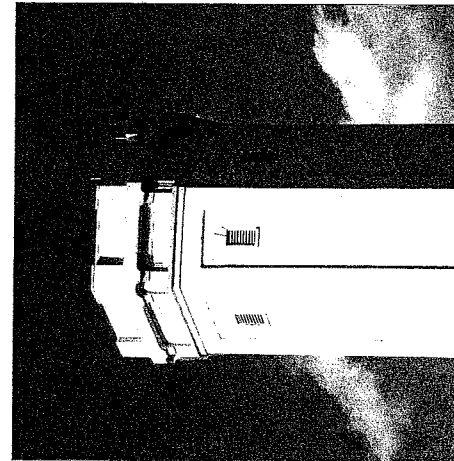
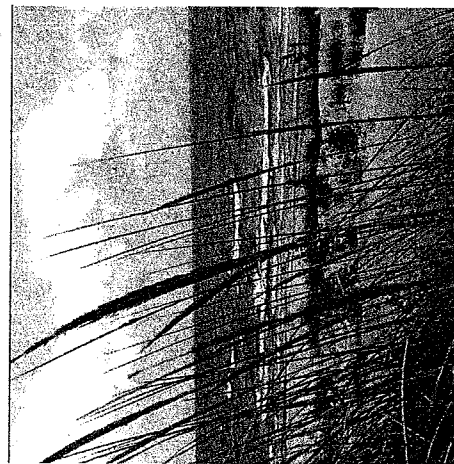
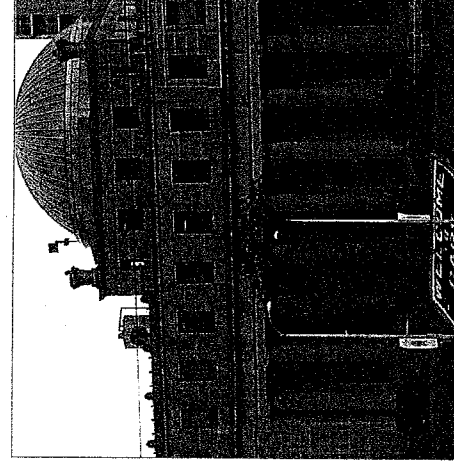
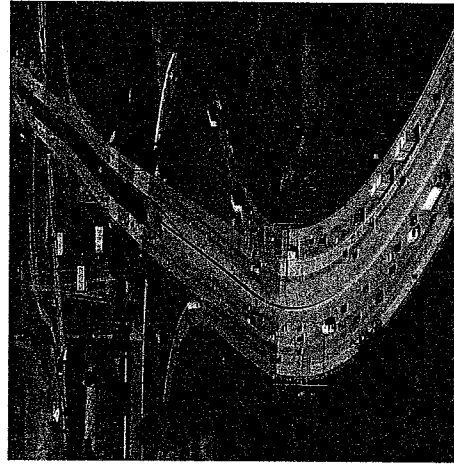
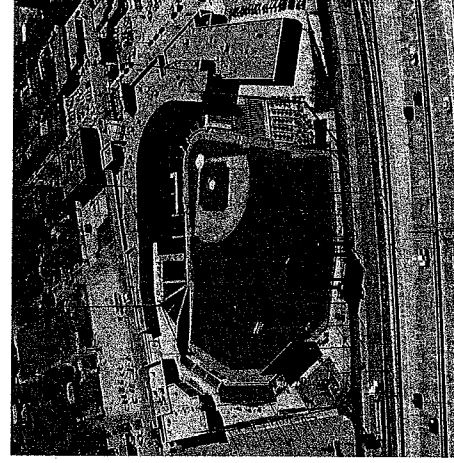
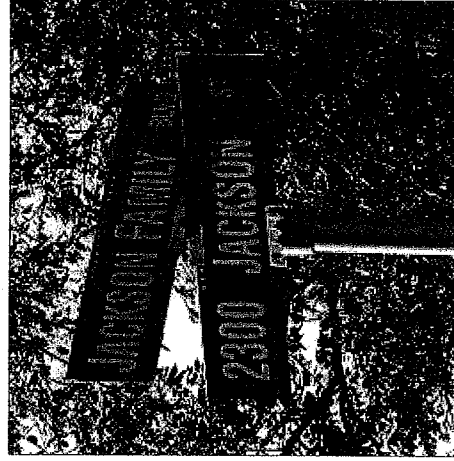
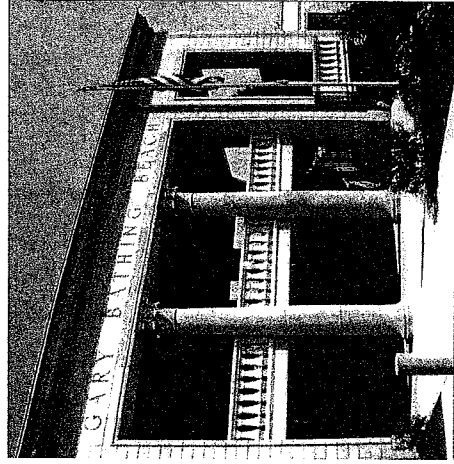




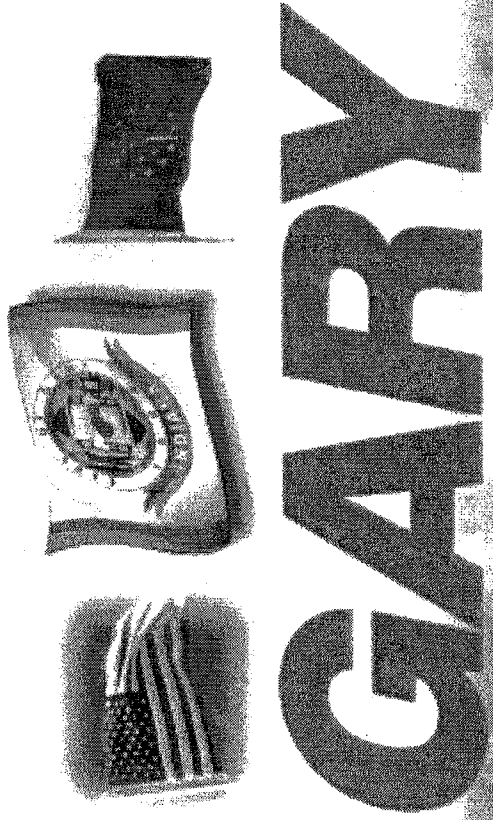
# CITY OF GARY

Lake County, Indiana

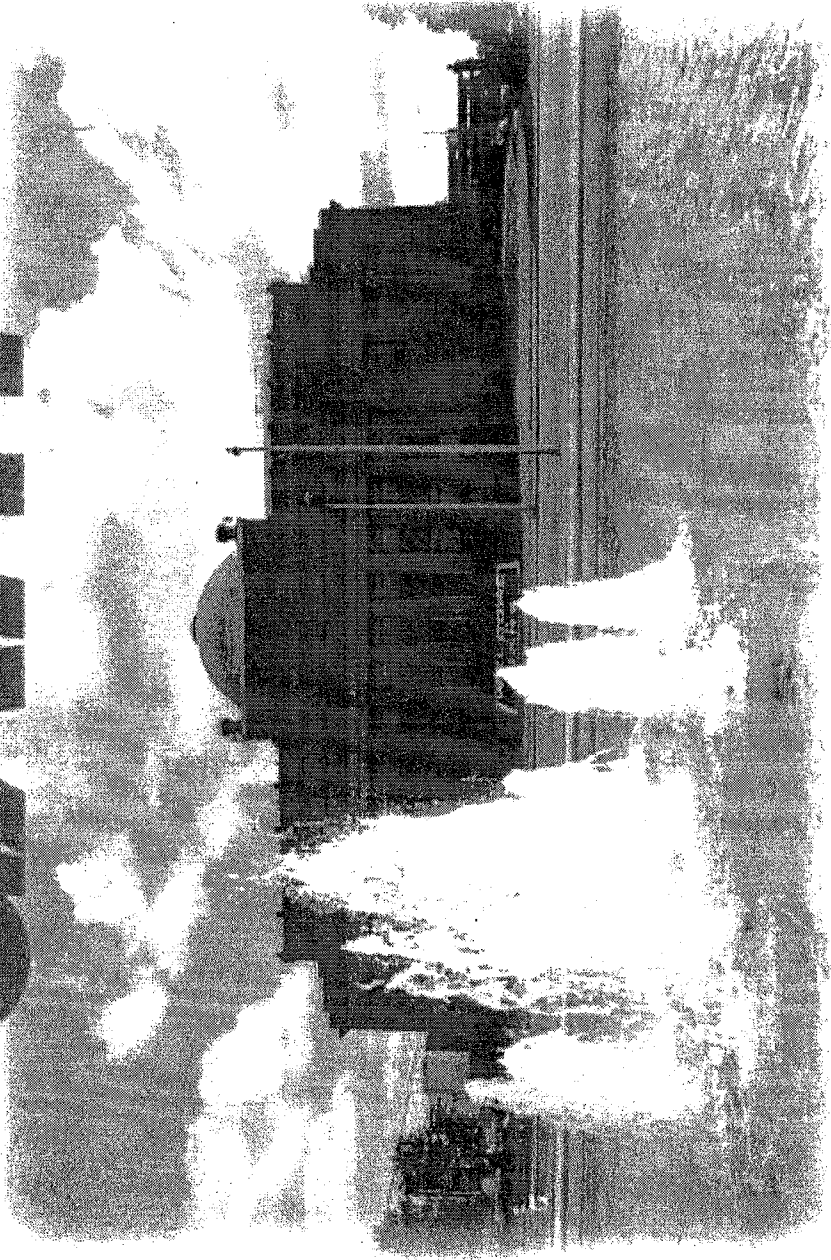
## 2010 SALARY BUDGET



**MAYOR RUDOLPH CLAY**  
**DEPUTY MAYOR GERALDINE TOUSANT**  
**M. CELITA GREEN, CITY CONTROLLER**



**JOE GARY**



**ELECTED OFFICIALS**

COUNCIL  
PENDING ORDINANCE 2009-68  
ORDINANCE NO. 8316  
AS AMENDED BY SUBSTITUTION 10/06/09  
CERTIFICATION DATE \_\_\_\_\_  
CERTIFIED BY \_\_\_\_\_  
FAVORABLY \_\_\_\_\_  
UNFAVORABLY \_\_\_\_\_

AN ORDINANCE APPROVING SALARIES FOR EMPLOYEES OF THE CITY OF  
GARY FOR THE CALENDAR YEAR 2010

WHEREAS, Section 36-4-7-3 AND 36-8-3-3 of the Indiana Code, direct that the "Salaries of each and every appointive officer, employee, deputy assistant and institutional head, shall be fixed by the Mayor subject to approval of the Common Council, and

WHEREAS, The Salaries of the officers and employees of the City of Gary schedule of which is attached hereto, and made a part hereof, and marked for purposes of identification as "Salary Schedule for the City of Gary for Calendar Year 2010", and


WHEREAS, Sections 36-4-7-3 and 36-8-3-3 further require that all such salaries be fixed on or before the twenty-second day of September for the next succeeding, fiscal year,

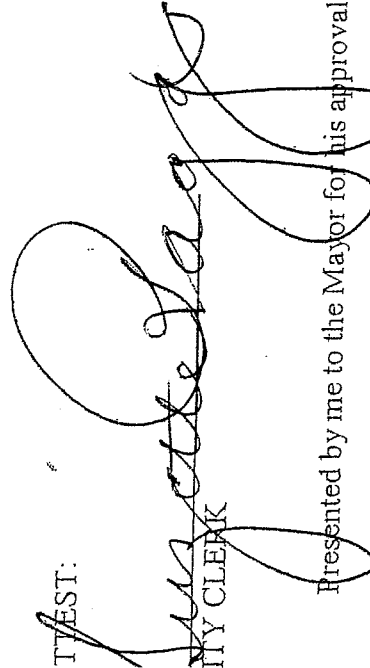
NOW THEREFORE, BE IT ORDAINED by the Common Council of the City of Gary, Indiana as follows:

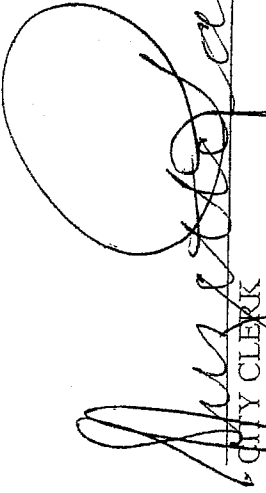
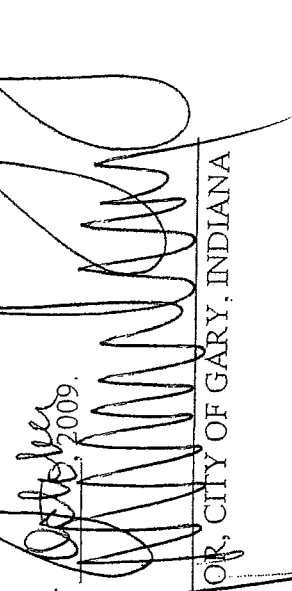
SECTION 1. That the Salary Schedule which is attached hereto and made a part hereof, which is marked for purposes of identification as "Salary for the City of Gary for the Calendar Year 2010" is approved by the Common Council of the City of Gary.

SECTION 2. The ordinance shall be in full force and effect beginning January 1, 2010.

PASSED and ADOPTED, by the Common Council of the City of Gary, Indiana, this 20<sup>th</sup> day of Oct., 2009.

  
\_\_\_\_\_  
PRESIDENT OFFICER

TEST:  
  
CITY CLERK  
Presented by me to the Mayor for his approval and signature this 1st day of Oct., 2009.

  
CITY CLERK  
  
MAYOR, CITY OF GARY, INDIANA

APPROVED and SIGNED by me this 21<sup>st</sup> day of October, 2009.

PREPARED BY: Law Department

SPONSORED BY: Rudolph Clay, Mayor  
Celita Green, Controller

COMMITTEE ASSIGNMENT FINANCE Reported-out/Date 9-15-09  
1st Reading/Date 9-15-09 Committee Hearing/Date 9-22-09 2nd Reading/Date 9-15-09  
Public Hearing/Date 10-20-09 3rd Reading/Date 10-20-09 Final Reading/Date 10-20-09  
Passed/Date \_\_\_\_\_ Defered/Date \_\_\_\_\_  
Tabled/Date \_\_\_\_\_ Override/Date 10-20-09 Adopted/Date 10-20-09  
Publication/Date \_\_\_\_\_ Community Hearing/Date \_\_\_\_\_ Veto \_\_\_\_\_ Pocket \_\_\_\_\_  
Veto \_\_\_\_\_ Adopted \_\_\_\_\_



**FILED**  
**OCT 20 2009**  
 CLERK'S OFFICE  
 Suzette Raggs  
 Gary City Clerk

**CITY OF GARY 2010 SALARY BUDGET**

General City Council		COUNCIL APPROVED REVISED 2009 SALARY BUDGET		PROPOSED 2010 SALARY BUDGET	
JOB DESCRIPTION	EMPL TYPE #	UNIT SALARIES	TOTAL SALARIES	UNIT SALARIES	TOTAL SALARIES
3ER	O,S 1	28,727	28,727	28,727	28,727
3ER	O,S 1	28,727	28,727	28,727	28,727
3ER	O,S 1	28,727	28,727	28,727	28,727
3ER	O,S 1	28,727	28,727	28,727	28,727
3ER	O,S 1	28,727	28,727	28,727	28,727
3ER	O,S 1	28,727	28,727	28,727	28,727
3ER	O,S 1	28,727	28,727	28,727	28,727
3ER	O,S 1	28,727	28,727	28,727	28,727
3ER	O,S 1	28,727	28,727	28,727	28,727
3ER	F,S 1	40,000	40,000	40,000	40,000
ESOURCE COORDINATOR	F,S 1	35,407	35,407	35,407	35,407
SSISTANT I	F,S 1	31,940	31,940	31,940	31,940
SSISTANT II	F,S 1	30,851	30,851	30,851	30,851
SSISTANT II	F,S 1	30,851	30,851	30,851	30,851
SSISTANT III	F,S 1	28,950	28,950	28,950	28,950
MAN	F,S 1	41,328	41,328	41,328	41,328
TOTAL	F,S 7	239,327	239,327	239,327	239,327
TOTAL	P,S 9	258,543	258,543	258,543	258,543
	16	497,870	497,870	497,870	497,870

**FILED**  
**OCT 20 2009**  
**CLERK'S OFFICE**  
 Suzette Flagg  
 Gary City Clerk

CITY OF GARY 2010 SALARY BUDGET

FUND: 101-GENERAL FUND  
 DEPT: 30- CITY COURT

JOB DESCRIPTION	EMPL TYPE	COUNCIL APPROVED BUDGET		COUNCIL PROPOSED BUDGET	
		UNIT SALARY	TOTAL SALARY	UNIT SALARY	TOTAL SALARY
JUDGE	O,S 1	67,000	67,000	67,000	67,000
COURT ADMINISTRATOR	F,S 1	46,000	46,000	45,000	45,000
PROBATION OFFICER	F,S 1	43,000	43,000	43,000	43,000
REFEREE	F,S 1	33,500	33,500	32,500	32,500
PROBATION SECRETARY	F,S 1	31,700	31,700	31,700	31,700
PRETRIAL SUPERVISOR	F,S 1	31,700	31,700	31,700	31,700
CHIEF BAILIFF	F,S 1	31,700	31,700	31,700	31,700
REFEREE	F,S 1	31,500	31,500	31,500	31,500
CIVIL MAGISTRATE(REFEREE)	F,S 1	29,500	29,500	25,000	25,000
DRUG CRT CASEMANAGER	F,S 1	30,000	30,000	30,000	30,000
PROBATION OFFICER	F,S 1	30,000	30,000	30,000	30,000
PROBATION OFFICER	F,S 1	30,000	30,000	28,000	28,000
DRUG CRT CASEMANAGER	F,S 1	25,800	25,800	17,000	17,000
NIGHT COURT SUPERVISOR	F,S 1	29,750	29,750	28,500	28,500
PRETRIAL INVESTIGATOR	F,S 1	30,000	30,000	30,000	30,000
PRETRIAL INVESTIGATOR	F,S 1	28,500	28,500	28,500	28,500
PROBATION OFFICER	F,S 1	28,500	28,500	2000	2000
ASST. CHIEF BAILIFF	F,S 1	28,500	28,500	27,500	27,500
SR. DRUG CT. CASEMANAGER	F,S 1	27,200	27,200	27,200	27,200
DC CASEMANAGER	F,S 1	27,200	27,200	27,200	27,200
LAB TECHNICIAN	F,S 1	27,500	27,500	27,500	27,500
PROGRAM ADMINISTRATOR	F,S 1	35,000	35,000	30,000	30,000
ADMINISTRATIVE ASSIST.	F,S 1	26,000	26,000	26,000	26,000
CIVIL SUPERVISOR	F,S 1	26,000	26,000	25,500	25,500
PROBATION OFFICER	F,S 1	40,500	40,500	40,500	40,500
BAILIFF	F,S 1	25,800	25,800	25,800	25,800
BAILIFF	F,S 1	25,800	25,800	25,800	25,800
PRETRIAL INVESTIGATOR	F,S 1	25,000	25,000	25,000	25,000
DRUG COURT EVALUATOR	F,S 1	25,500	25,500	25,500	25,500
SECRETARY	F,S 1	24,300	24,300	24,300	24,300
SECRETARY	F,S 1	24,200	24,200	24,200	24,200
SECRETARY	F,S 1	24,200	24,200	24,200	24,200
COMMUNITY SERVICE COOR.	F,S 1	23,700	23,700	23,700	23,700
<b>SUB-TOTALS</b>	<b>33</b>	<b>1,014,550</b>	<b>1,014,550</b>	<b>963,000</b>	<b>963,000</b>

**F**ILLED **U**N  
**F** OCT 20 2009  
 CLEANING OFFICE  
 Suzette Raggs  
 Gary City Clerk

FUND: 101-GENERAL FUND  
 DEPT: 30- CITY COURT

JOB DESCRIPTION	EMPL TYPE	COUNCIL APPROVED 2009 SALARY BUDGET		COUNCIL PROPOSED 2010 SALARY BUDGET		
		UNIT SALARY	TOTAL SALARIES	UNIT SALARY	TOTAL SALARIES	
JUDGE	O,S 1	67,000	67,000	1	67,000	67,000
COURT ADMINISTRATOR	F,S 1	46,000	46,000	1	45,000	45,000
REFEREE	F,S 1	20,000	20,000	1	19,000	19,000
REFEREE	F,S 1	20,000	20,000	1	15,000	15,000
PUBLIC DEFENDER	F,S 1	19,500	19,500	1	19,000	19,000
PUBLIC DEFENDER	F,S 1	19,500	19,500	1	19,000	19,000
PUBLIC DEFENDER	F,S 1	16,000	16,000	1	16,000	16,000
PUBLIC DEFENDER	F,S 1	16,000	16,000	1	16,000	16,000
ASST. NIGHT CT. SUPERVISOR	F,S 1	14,500	14,500	1	7,000	7,000
BAILIFF	P,S 1	15,000	15,000	0	0	0
BAILIFF	P,S 1	15,000	15,000	1	14,250	14,250
NIGHT COURT BAILIFF	P,S 1	13,500	13,500	0	0	0
CIVIL RECLAMATIONS OFF.	P,S 1	13,000	13,000	0	0	0
COURT REPORTER	P,S 1	15,000	15,000	1	14,250	14,250
SECRETARY	P,S 1	13,500	13,500	0	0	0
CIVIL BAILIFF	P,S 1	12,000	12,000	0	0	0
CIVIL BAILIFF	P,S 1	12,000	12,000	0	0	0
CIVIL BAILIFF	P,S 1	12,000	12,000	0	0	0
NIGHT COURT BAILIFF	P,S 1	9,000	9,000	0	0	0
NIGHT COURT BAILIFF	P,S 1	10,250	10,250	1	9,500	9,500
NIGHT COURT BAILIFF	P,S 1	10,250	10,250	1	9,500	9,500
FULLTIME		40	1,140,250	40	1,074,000	1,074,000
PART-TIME		12	150,500	4	47,500	47,500
TOTALS		52	1,290,750	44	1,121,500	1,121,500



**FILED**  
**OCT 20 2009**  
**CLERK'S OFFICE**  
 Suzette Raggs  
 Gary City Clerk

**CITY OF GARY 2010 SALARY BUDGET**

FUND: 101-GENERAL  
 DEPT: 040-CITY CLERK

JOB DESCRIPTION	TYPE	APPROVED AMENDED 2009 SALARY BUDGET			PROPOSED 2010 SALARY BUDGET		
		UNIT SALARY	TOTAL SALARIES		UNIT SALARY	TOTAL SALARIES	
CITY CLERK	O,S	1	65,381	65,381	1	64,073	64,073
CHIEF DEPUTY	F,S	1	55,752	55,752	1	54,637	54,637
FISCAL MANAGER	F,S	1	43,827	43,827	1	42,950	42,950
SR. TECH SUVP.	F,S	1	37,995	37,995	1	37,235	37,235
SUPERVISOR	F,S	1	35,195	35,195	1	34,491	34,491
SUPERVISOR (eliminate)	F,S	1	35,195	35,195	0	0	0
ADM ASST.	F,S	1	30,282	30,282	1	29,676	29,676
STAFF ACCOUNTANT	F,S	1	32,445	32,445	1	31,796	31,796
DEPUTY CLERK V	F,S	1	29,374	29,374	1	28,787	28,787
DEPUTY CLERK V	F,S	1	29,374	29,374	1	28,787	28,787
DEPUTY CLERK V	F,S	1	29,374	29,374	1	28,787	28,787
SR DATA CLERK	F,S	1	29,255	29,255	1	28,670	28,670
MICROFILM TECHNICIAN	F,S	1	28,834	28,834	1	28,257	28,257
BOOKKEEPER II	F,S	1	27,633	27,633	1	27,080	27,080
BOOKKEEPER II	F,S	1	27,633	27,633	1	27,080	27,080
DEPUTY CLERK IV	F,S	1	26,719	26,719	1	26,185	26,185
DEPUTY CLERK IV	F,S	1	26,719	26,719	1	26,185	26,185
DEPUTY CLERK IV	F,S	1	26,719	26,719	1	26,185	26,185
DEPUTY CLERK IV	F,S	1	26,719	26,719	1	26,185	26,185
DEPUTY CLERK III	F,S	1	26,064	26,064	1	25,543	25,543
DEPUTY CLERK III	F,S	1	26,064	26,064	1	25,543	25,543
DEPUTY CLERK III	F,S	1	26,064	26,064	1	25,543	25,543
DEPUTY CLERK III	F,S	1	26,064	26,064	1	25,543	25,543
DEPUTY CLERK III	F,S	1	26,064	26,064	1	25,543	25,543
DEPUTY CLERK III	F,S	1	26,064	26,064	1	25,543	25,543
DEPUTY CLERK III	F,S	1	26,064	26,064	1	25,543	25,543
DEPUTY CLERK II	F,S	1	25,066	25,066	1	24,565	24,565
DEPUTY CLERK II	FS	1	25,066	25,066	1	24,565	24,565
DEPUTY CLERK II	F,S	1	25,066	25,066	1	24,565	24,565
DEPUTY CLERK II(eliminate)	F,S	1	25,066	25,066	0	0	0
DEPUTY CLERK I	P,S	1	11,356	11,356	1	11,129	11,129
DEPUTY CLERK I(eliminate)	P,S	1	11,356	11,356	0	0	0
SUBTOTALS			949,849	949,849		860,671	860,671
PART-TIME		2	22,712	22,712	1	11,129	11,129
FULL-TIME		30	927,137	927,137	28	849,542	849,542
TOTAL		32	949,849	949,849	29	860,671	860,671



## CITY DEPARTMENTS

**FILED IN**  
 OCT 20 2009  
 CLERK'S OFFICE  
 Suzette Raggs  
 Gary City Clerk

**CITY OF GARY 2010 SALARY BUDGET**

FUND: 101-GENERAL

DEPT: 050-LAW

JOB DESCRIPTION	EMPL TYPE #	APPROVED AMENDED 2009 SALARY BUDGET		PROPOSED 2010 SALARY BUDGET		
		UNIT SALARY	TOTAL SALARIES	UNIT SALARY	UNIT SALARY	TOTAL SALARIES
CORPORATION COUNSEL	F.S 1	60,520	60,520	60,520	60,520	60,520
CITY ATTORNEY	F.S 1	57,384	57,384	57,384	57,384	57,384
OFFICE ADMINISTRATOR	F.S 1	33,514	33,514	33,514	33,514	33,514
	0		0			0
	3	151,418	151,418	3	151,418	151,418
<b>TOTAL</b>	3	151,418	151,418	3	151,418	151,418





**FILED IN**  
**OCT 20 2009**  
**CLERK'S OFFICE**  
 Suzette Raggs  
 Gary City Clerk

**CITY OF GARY 2010 SALARY BUDGET**

FUND: 101-GENERAL FUND

DEPT: 90-DIVISION OF PUBLIC WORKS

		APPROVED AMENDED				PROPOSED			
		2009 SALARY BUDGET				2010 SALARY BUDGET			
JOB DESCRIPTION	EMPL TYPE #	UNIT SALARY	TOTAL SALARIES	#	UNIT SALARY	TOTAL SALARIES	#	UNIT SALARY	TOTAL SALARIES
DIRECTOR	F,S 1	60,520	60,520	1	60,520	60,520	1	60,520	60,520
DEPUTY DIRECTOR	F,S 1	44,332	44,332	1	44,332	44,332	1	44,332	44,332
CIVIL ENGINEER II	F,S 1	39,187	39,187	1	39,187	39,187	1	21,700	21,700
ADMINISTRATIVE ASST.	F,S 1	33,094	33,094	1	33,094	33,094	1	33,094	33,094
BUILDING COMMISSIONER	F,S 1	41,200	41,200	1	41,200	41,200	1	41,200	41,200
ERMIT CLERK/SECRETARY	F,S 1	20,600	20,600	1	20,600	20,600	1	20,600	20,600
OFFICE MANAGER	F,S 1	26,780	26,780	1	26,780	26,780	1	26,780	26,780
INSPECTOR COORDINATOR	F,S 1	33,094	33,094	1	33,094	33,094	1	33,094	33,094
CHIEF PLBG./HVAC INSPECTOR	F,S 1	33,094	33,094	1	33,094	33,094	1	33,094	33,094
CHIEF ELECTRICAL INSPECTOR	F,S 1	33,094	33,094	1	33,094	33,094	1	33,094	33,094
SPECTOR SPECIALIST	F,S 1	30,000	30,000	1	30,000	30,000	1	30,000	30,000
ELECTRICAL INSPECTOR	F,S 1	28,026	28,026	1	28,026	28,026	1	28,026	28,026
BG/HVAC INSPECTOR	F,S 1	28,026	28,026	1	28,026	28,026	1	28,026	28,026
ELECTRICAL INSPECTOR (TRSF FROM 120)	F,S 1	28,026	28,026	1	28,026	28,026	1	28,026	28,026
BUILDING INSPECTOR (TRSF FROM 120)	F,S 1	28,026	28,026	1	28,026	28,026	1	28,026	28,026
BUILDING INSPECTOR (TRSF FROM 120)	F,S 1	28,026	28,026	1	28,026	28,026	1	28,026	28,026
DUG COMMISSIONERS (TRSF FROM 120)	P,S 6	618	3,708	6	618	3,708	6	600	3,600
DIRECTOR OF PLANNING (TRSF FROM DEPT 130)	F,S 1	55,367	55,367	1	55,367	55,367	1	55,367	55,367
PLANNING MANAGER (TRSF FROM DEPT 130)	F,S 1	41,200	41,200	1	41,200	41,200	1	41,200	41,200
PLANNING SECRETARY (TRSF FROM DEPT 130)	F,S 1	27,810	27,810	1	27,810	27,810	1	27,810	27,810
PLANNING COMMISSIONERS (TRSF FROM DEPT 130)	P,S 14	618	8,652	9	618	8,652	9	600	5,400
PLANNING COMMISSIONERS (TRSF FROM DEPT 130)	P,S 0	0	0	0	0	0	5	600	3,000
RT-TIME		1,236	12,360	20	1,800	12,000			
PL-TIME		659,502	659,502	19	642,015	642,015			
TOTAL		660,738	671,862	39	643,815	654,015			

UNCONSOLIDATED PUBLIC WORKS, PLANNING, AND BUILDING













**FILED**  
**OCT 20 2009**  
**CLEER'S OFFICE**  
 Suzette Flagg  
 Gary City Clerk

**CITY OF GARY 2010 SALARY BUDGET**

FUND: 101-GENERAL  
 DEPT: 220-GENERAL SERVICES

JOB DESCRIPTION	EMPL TYPE	#	APPROVED AMENDED		PROPOS		PROPOSED	
			UNIT SALARY	TOTAL SALARIES	UNIT SALARY	TOTAL SALARIES	UNIT SALARY	TOTAL SALARIES
DIRECTOR	F,S	1	49,800	49,800	49,800	1	49,800	49,800
ASST. DIRECTOR	F,S	1	46,500	46,500	46,500	1	46,500	46,500
SUPERINTENDENT(CUSTODIAN)	F,S	1	44,017	44,017	44,017	1	44,017	44,017
SUPERINTENDENT	F,S	1	44,017	44,017	44,017	1	44,017	44,017
EXPEDITOR	F,S	1	26,151	26,151	26,151	1	26,151	26,151
PAYROLL SPECIALIST	F,S	1	23,931	23,931	23,931	1	23,931	23,931
ADMINISTRATIVE ASST. II	F,S	1	27,313	27,313	27,313	1	27,313	27,313
HEAVY EQUIP. OPER. - CLASS A	F,H	1	30,950	30,950	30,950	1	30,950	30,950
HEAVY EQUIP. OPER. - CLASS A	F,H	1	30,950	30,950	30,950	1	30,950	30,950
HEAVY EQUIP. OPER. - CLASS B	F,H	1	29,577	29,577	29,577	1	29,577	29,577
HEAVY EQUIP. OPER. - CLASS B	F,H	1	29,577	29,577	29,577	1	29,577	29,577
HEAVY EQUIP. OPER. - CLASS B	F,H	1	29,577	29,577	29,577	1	29,577	29,577
HEAVY EQUIPMT OPERATOR	F,H	1	29,577	29,577	29,577	1	29,577	29,577
HEAVY EQUIPMT OPERATOR	F,H	1	29,577	29,577	29,577	1	29,577	29,577
HEAVY EQUIPMT OPERATOR	F,H	1	29,577	29,577	29,577	1	29,577	29,577
SIX-WHEEL DRIVER (street dept)	F,H	1	28,364	28,364	28,364	1	28,364	28,364
RADIO DISPATCHER(eliminate)	F,H	1	26,667	26,667	26,667	0	0	0
PLUMBER	F,S	1	29,582	29,582	29,582	1	29,582	29,582
MAINTENANCE II(Parks)	F,H	1	26,667	26,667	26,667	1	26,667	26,667
MAINTENANCE II(Marquette Park)	F,H	1	26,667	26,667	26,667	1	26,667	26,667
MAINTENANCE II(Marquette Park)	F,H	1	26,667	26,667	26,667	1	26,667	26,667
MAINTENANCE II(grasscut, snow)	F,H	1	26,667	26,667	26,667	1	26,667	26,667
MAINTENANCE II(trees, patch, snow)	F,H	1	26,667	26,667	26,667	1	26,667	26,667
MAINTENANCE II(trees, patch, snow)	F,H	1	26,667	26,667	26,667	1	26,667	26,667
MAINTENANCE I	F,H	1	23,503	23,503	23,503	1	23,503	23,503
PARK MAINTENANCE	F,H	1	26,667	26,667	26,667	1	26,667	26,667
CUSTODIAN	F,H	1	23,067	23,067	23,067	1	23,067	23,067
CUSTODIAN	F,H	1	23,067	23,067	23,067	1	23,067	23,067
CUSTODIAN	F,H	1	23,067	23,067	23,067	1	23,067	23,067
CUSTODIAN	F,H	1	23,067	23,067	23,067	1	23,067	23,067
CUSTODIAN-MARQUETTE	F,H	1	20,592	20,592	20,592	1	20,592	20,592
CUSTODIAN(MARQUETTE)	F,H	1	20,592	20,592	20,592	1	20,592	20,592
CUSTODIAN(TOLLESTON)	F,H	1	20,592	20,592	20,592	1	20,592	20,592
CUSTODIAN(AMBRIDGE MANN)	F,H	1	20,592	20,592	20,592	1	20,592	20,592
CUSTODIAN(FLOATER)	F,H	1	20,592	20,592	20,592	1	20,592	20,592
CUSTODIAN(FLOATER)	F,H	1	20,592	20,592	20,592	1	20,592	20,592
CUSTODIAN(FLOATER)	F,H	1	20,592	20,592	20,592	1	20,592	20,592
CUSTODIAN(FLOATER)	F,H	1	20,592	20,592	20,592	1	20,592	20,592
ADMINISTRATIVE ASSISTANT	F,H	1	36,000	36,000	36,000	1	36,000	36,000
<b>TOTAL</b>		<b>40</b>	<b>1,115,547</b>	<b>1,115,547</b>	<b>1,115,547</b>	<b>39</b>	<b>1,088,880</b>	<b>1,088,880</b>

CONSOLIDATE GENERAL SERVICES AND DEMOLITION

















**FILED IN**  
**OCT 20 2009**  
 CLERK'S OFFICE  
 Suzette Raggs  
 Gary City Clerk

**CITY OF GARY 2010 SALARY BUDGET**

GENERAL FIRE COMMISSION	APPROVED AMENDED 2009 SALARY BUDGET				REVISED 2009 SALARY BUDGET			
	EMPL TYPE	#	UNIT SALARY	TOTAL SALARIES	EMPL TYPE	#	UNIT SALARY	TOTAL SALARIES
GENERAL	P,S	6	1,275	7,651	P,S	6	1,275	7,651
TIVE ASST.	P,S	1	36,247	36,247	P,S	1	36,247	36,247
		6	1,275	7,651		6	1,275	7,651
		1	36,247	36,247		1	36,247	36,247
		7	37,522	43,898		7	37,522	43,898

**FILED**  
**OCT 20 2009**  
 CLERK'S OFFICE  
 Suzette Raggs  
 Gary City Clerk

**CITY OF GARY 2010 SALARY BUDGET**

FUND: 101-GENERAL  
 DEPT: 290 FIRE DEPARTMENT

JOB DESCRIPTION	EMPLOYEE TYPE	APPROVED AMENDED 2009 SALARY BUDGET		PROPOSED 2010 SALARY BUDGET			
		UNIT SALARIES	UNIT SALARIES	UNIT SALARIES	UNIT SALARIES		
FIRE CHIEF	F,S	1	104,738	104,738	1	104,738	104,738
DEPUTY CHIEF	F,S	1	60,845	60,845	1	60,845	60,845
DIVISION CHIEF OF OPERATION	F,S	1	53,927	53,927	1	53,927	53,927
DIVISION CHIEF	F,S	1	53,927	53,927	1	53,927	53,927
DIVISION CHIEF	F,S	1	53,927	53,927	1	53,927	53,927
DIVISION CHIEF	F,S	1	53,927	53,927	1	53,927	53,927
DIVISION CHIEF	F,S	1	53,927	53,927	1	53,927	53,927
CHIEF BUILDING AND GROUNDS	F,S	1	53,927	53,927	1	53,927	53,927
CHIEF INSPECTOR	F,S	1	53,927	53,927	1	53,927	53,927
CHIEF MECHANIC	F,S	1	53,927	53,927	1	53,927	53,927
CHIEF OF COMMUNICATIONS	F,S	1	53,927	53,927	1	53,927	53,927
CHIEF TRAINING OFFICER	F,S	1	53,927	53,927	1	53,927	53,927
CHIEF HEALTH & SAFETY	F,S	1	53,927	53,927	1	53,927	53,927
BATTALION CHIEF	F,S	1	47,776	47,776	1	47,776	47,776
BATTALION CHIEF	F,S	1	47,776	47,776	1	47,776	47,776
BATTALION CHIEF	F,S	1	47,776	47,776	1	47,776	47,776
BATTALION CHIEF	F,S	1	47,776	47,776	1	47,776	47,776
BATTALION CHIEF	F,S	1	47,776	47,776	1	47,776	47,776
BATTALION CHIEF	F,S	1	47,776	47,776	1	47,776	47,776
BATTALION CHIEF	F,S	1	47,776	47,776	1	47,776	47,776
BATTALION CHIEF	F,S	1	47,776	47,776	1	47,776	47,776
BATTALION CHIEF	F,S	1	47,776	47,776	1	47,776	47,776
BATTALION CHIEF	F,S	1	47,776	47,776	1	47,776	47,776
BATTALION CHIEF	F,S	1	47,776	47,776	1	47,776	47,776
BATTALION CHIEF	F,S	1	47,776	47,776	1	47,776	47,776
BATTALION CHIEF	F,S	1	47,776	47,776	1	47,776	47,776
MIS OFFICER	F,S	1	47,776	47,776	1	47,776	47,776
DRILL MASTER	F,S	1	47,776	47,776	1	47,776	47,776
<b>SUBTOTALS</b>		<b>27</b>	<b>1,427,644</b>	<b>1,427,644</b>	<b>27</b>	<b>1,427,644</b>	<b>1,427,644</b>

FUND: 101-GENERAL  
 DEPT: 290 FIRE DEPARTMENT

JOB DESCRIPTION	COUNCIL APPROVED/REVISED 2009 SALARY BUDGET		PROPOSED 2010 SALARY BUDGET	
	EMPL TYPE #	UNIT SALARY	UNIT SALARY	UNIT SALARY
FISCAL OFFICER	F,S 1	45,501	45,501	1 45,501
SENIOR INSPECTOR	F,S 1	47,776	47,776	1 47,776
MASTER MECHANIC	F,S 1	47,776	47,776	1 47,776
CAPTAIN	F,S 1	45,501	45,501	1 45,501
CAPTAIN	F,S 1	45,501	45,501	1 45,501
CAPTAIN	F,S 1	45,501	45,501	1 45,501
CAPTAIN	F,S 1	45,501	45,501	1 45,501
CAPTAIN	F,S 1	45,501	45,501	1 45,501
CAPTAIN	F,S 1	45,501	45,501	1 45,501
CAPTAIN	F,S 1	45,501	45,501	1 45,501
CAPTAIN	F,S 1	45,501	45,501	1 45,501
CAPTAIN	F,S 1	45,501	45,501	1 45,501
CAPTAIN	F,S 1	45,501	45,501	1 45,501
CAPTAIN	F,S 1	45,501	45,501	1 45,501
CAPTAIN	F,S 1	45,501	45,501	1 45,501
CAPTAIN	F,S 1	45,501	45,501	1 45,501
CAPTAIN*	F,S 1	45,501	45,501	1 45,501
CAPTAIN	F,S 1	45,501	45,501	1 45,501
CAPTAIN	F,S 1	45,501	45,501	1 45,501
CAPTAIN	F,S 1	45,501	45,501	1 45,501
CAPTAIN	F,S 1	45,501	45,501	1 45,501
CAPTAIN	F,S 1	45,501	45,501	1 45,501
CAPTAIN	F,S 1	45,501	45,501	1 45,501
CAPTAIN	F,S 1	45,501	45,501	1 45,501
CAPTAIN	F,S 1	45,501	45,501	1 45,501
CAPTAIN	F,S 1	45,501	45,501	1 45,501
CAPTAIN	F,S 1	45,501	45,501	1 45,501
CAPTAIN	F,S 1	45,501	45,501	1 45,501
CAPTAIN	F,S 1	45,501	45,501	1 45,501
CAPTAIN	F,S 1	45,501	45,501	1 45,501
CAPTAIN	F,S 1	45,501	45,501	1 45,501
CAPTAIN	F,S 1	45,501	45,501	1 45,501
CAPTAIN	F,S 1	45,501	45,501	1 45,501
SUBTOTALS	39	1,779,089	1,779,089	39 1,779,089

**FILED**  
**OCT 20 2009**  
 CLERK'S OFFICE  
 Suzette Raggs  
 Gary City Clerk

FUND: 101-GENERAL  
 DEPT: 290 FIRE DEPARTMENT

JOB DESCRIPTION	COUNCIL APPROVED/REVISED 2009 SALARY BUDGET		PROPOSED 2010 SALARY BUDGET	
	EMP. TYPE	UNIT SALARY	UNIT SALARY	UNIT SALARY
CAPTAIN	F,S	1	45,501	45,501
CAPTAIN	F,S	1	45,501	45,501
CAPTAIN	F,S	1	45,501	45,501
CAPT SAFETY OFFICER	F,S	1	45,501	45,501
CAPT SAFETY OFFICER	F,S	1	45,501	45,501
CAPT SAFETY OFFICER	F,S	1	45,501	45,501
INSPECTOR	F,S	1	45,501	45,501
INSPECTOR	F,S	1	45,501	45,501
INSPECTOR	F,S	1	45,501	45,501
ARSON INVESTIGATOR	F,S	1	45,501	45,501
ARSON INVESTIGATOR	F,S	1	45,501	45,501
ARSON INVESTIGATOR	F,S	1	45,501	45,501
CARPENTER	F,S	1	45,501	45,501
RADIO TECHNICIAN	F,S	1	45,501	45,501
MECHANIC	F,S	1	45,501	45,501
MECHANIC	F,S	1	45,501	45,501
MECHANIC	F,S	1	45,501	45,501
DIVE MASTER	F,S	1	45,501	45,501
EQUIPMENT OFFICER	F,S	1	45,501	45,501
TRAINING OFFICER	F,S	1	45,501	45,501
LIEUTENANT	F,S	1	43,334	43,334
LIEUTENANT	F,S	1	43,334	43,334
LIEUTENANT	F,S	1	43,334	43,334
<b>SUBTOTALS</b>		<b>23</b>	<b>1,040,022</b>	<b>1,040,022</b>











**FILED IN**  
OCT 20 2009  
CLERK'S OFFICE  
Suzette Raggs  
Gary City Clerk

FUND: 101-GENERAL  
DEPT: 290 FIRE DEPARTMENT

JOB DESCRIPTION	COUNCIL APPROVED/REVISSED 2008 SALARY BUDGET		PROPOSED 2009 SALARY BUDGET	
	EMPL TYPE	UNIT SALARY	UNIT SALARY	UNIT SALARY
FIREFIGHTER	F,S	1 39,304	39,304 1	39,304 39,304
FIREFIGHTER	F,S	1 39,304	39,304 1	39,304 39,304
FIREFIGHTER	F,S	1 39,304	39,304 1	39,304 39,304
FIREFIGHTER	F,S	1 39,304	39,304 1	39,304 39,304
FIREFIGHTER	F,S	1 39,304	39,304 1	39,304 39,304
FIREFIGHTER	F,S	1 39,304	39,304 1	39,304 39,304
FIREFIGHTER	F,S	1 39,304	39,304 1	39,304 39,304
FIREFIGHTER	F,S	1 39,304	39,304 1	39,304 39,304
FIREFIGHTER	F,S	1 39,304	39,304 1	39,304 39,304
FIREFIGHTER	F,S	1 39,304	39,304 1	39,304 39,304
FIREFIGHTER	F,S	1 39,304	39,304 1	39,304 39,304
FIREFIGHTER	F,S	1 39,304	39,304 1	39,304 39,304
FIREFIGHTER	F,S	1 39,304	39,304 1	39,304 39,304
FIREFIGHTER	F,S	1 39,304	39,304 1	39,304 39,304
FIREFIGHTER	F,S	1 39,304	39,304 1	39,304 39,304
FIREFIGHTER	F,S	1 39,304	39,304 1	39,304 39,304
FIREFIGHTER	F,S	1 39,304	39,304 1	39,304 39,304
		13 510,952	510,952 13	510,952 510,952
<b>GRAND TOTAL</b>		241 10,417,424	10,417,424 241	10,417,424 10,417,424

**FILED**  
**OCT 20 2009**  
**CLERK'S OFFICE**  
 Suzette Raggs  
 Gary City Clerk

**CITY OF GARY 2010 SALARY BUDGET**

T: 300-EMERGENCY MEDICAL SERVIC

D:101-GENERAL

JOB DESCRIPTION		APPROVED/AMENDED 2009 SALARY BUDGET		PROPOSED 2010 SALARY BUDGET		
EMPL TYPE	UNIT	TOTALS SALARIES	UNIT	TOTALS SALARIES	UNIT	TOTALS SALARIES
CTOR	F,S 1	53,927	53,927	1	53,927	53,927
ISTANT CHIEF	F,S 1	43,041	43,041	1	43,041	43,041
ISTANT CHIEF	F,S 1	43,041	43,041	1	43,041	43,041
ISTANT CHIEF	F,S 1	43,041	43,041	1	43,041	43,041
INING OFFICER	F,S 1	42,739	42,739	1	42,739	42,739
AMEDIC SUPERVISOR	F,S 1	41,766	41,766	1	41,766	41,766
AMEDIC SUPERVISOR	F,S 1	41,766	41,766	1	41,766	41,766
AMEDIC SUPERVISOR	F,S 1	41,766	41,766	1	41,766	41,766
AMEDIC	F,S 1	41,215	41,215	1	41,215	41,215
AMEDIC	F,S 1	41,215	41,215	1	41,215	41,215
AMEDIC	F,S 1	41,215	41,215	1	41,215	41,215
AMEDIC	F,S 1	41,215	41,215	1	41,215	41,215
AMEDIC	F,S 1	41,215	41,215	1	41,215	41,215
AMEDIC	F,S 1	41,215	41,215	1	41,215	41,215
AMEDIC	F,S 1	41,215	41,215	1	41,215	41,215
AMEDIC	F,S 1	41,215	41,215	1	41,215	41,215
AMEDIC	F,S 1	41,215	41,215	1	41,215	41,215
AMEDIC	F,S 1	41,215	41,215	1	41,215	41,215
AMEDIC	F,S 1	41,215	41,215	1	41,215	41,215
AMEDIC	F,S 1	41,215	41,215	1	41,215	41,215
AMEDIC	F,S 1	41,215	41,215	1	41,215	41,215
AMEDIC	F,S 1	41,215	41,215	1	41,215	41,215
-1	F,S 1	39,492	39,492	1	39,492	39,492
A	F,S 1	37,492	37,492	1	37,492	37,492
TOTAL		922,645	922,645	22	922,645	922,645





**F** FILED IN  
**NOV 10 2009**  
 CLERK'S OFFICE  
 Suzette Flaggs  
 Gary City Clerk

**CITY OF GARY 2010 SALARY BUDGET**

		APPROVED/AMENDED				PROPOSED			
		2009 SALARY BUDGET				2010 SALARY BUDGET			
JOB DESCRIPTION	EMPL TYPE #	UNIT SALARY	TOTAL SALARIES	#	UNIT SALARY	TOTAL SALARIES	#	UNIT SALARY	TOTAL SALARIES
INTENDANT	F,S	44,017	44,017	1	44,017	44,017	1	44,017	44,017
STRATIVE ASSISTANT	F,S	27,313	27,313	1	27,313	27,313	1	27,313	27,313
NIC I	F,S	34,257	34,257	1	34,257	34,257	1	34,257	34,257
NIC I	F,S	34,257	34,257	1	34,257	34,257	1	34,257	34,257
NIC I	F,S	34,257	34,257	1	34,257	34,257	1	34,257	34,257
NIC I	F,S	34,257	34,257	1	34,257	34,257	1	34,257	34,257
NIC I	F,S	34,257	34,257	1	34,257	34,257	1	34,257	34,257
NIC I	F,S	34,257	34,257	1	34,257	34,257	1	34,257	34,257
NIC I	F,S	34,257	34,257	1	34,257	34,257	1	34,257	34,257
NIC I	F,S	34,257	34,257	1	34,257	34,257	1	34,257	34,257
NIC I	F,S	34,257	34,257	1	34,257	34,257	1	34,257	34,257
NIC II	F,S	31,824	31,824	1	31,824	31,824	1	31,824	31,824
NIC II	F,S	31,824	31,824	1	31,824	31,824	1	31,824	31,824
RUCK DRIVER Chg to TIREMAN	F,H	31,824	31,824	1	31,824	31,824	1	31,824	31,824
RUCK DRIVER Chg to TIREMAN	F,H	31,824	31,824	1	31,824	31,824	1	31,824	31,824
BUYER	F,S	31,824	31,824	1	31,824	31,824	1	31,824	31,824
0			0	0					0
14		470,249	470,249	14	470,249	470,249	14	470,249	470,249
14		470,249	470,249	14	470,249	470,249	14	470,249	470,249





**FILED IN**  
**OCT 20 2009**  
 CLERK'S OFFICE  
 Suzette Raggs  
 Gary City Clerk

CITY OF GARY 2010 SALARY BUDGET

FUND: 232-M.V.H.F.  
 DEPT: 222-GENERAL SERVICES

JOB DESCRIPTION	EMP. TYPE	APPROVED/AMENDED 2009 SALARY BUDGET		PROPOSED 2010 SALARY BUDGET	
		UNIT SALARY	TOTAL SALARIES	UNIT SALARY	TOTAL SALARIES
STREET FOREMAN	F,S	35,798	35,798	35,798	35,798
HEAVY EQUIPMENT OPER B	F,H	29,583	29,583	29,583	29,583
HEAVY EQUIPMENT OPER B	F,H	29,583	29,583	29,583	29,583
HEAVY EQUIPMENT OPER B	F,H	29,583	29,583	29,583	29,583
HEAVY EQUIPMENT OPER B	F,H	29,583	29,583	29,583	29,583
HEAVY EQUIPMENT OPER A	F,H	30,943	30,943	30,943	30,943
HEAVY EQUIPMENT OPER A	F,H	30,943	30,943	30,943	30,943
HEAVY EQUIPMENT OPER B	F,H	29,583	29,583	29,583	29,583
HEAVY EQUIPMENT OPER B	F,H	29,583	29,583	29,583	29,583
HEAVY EQUIPMENT OPER B	F,H	29,583	29,583	29,583	29,583
HEAVY EQUIPMENT OPER B	F,H	29,583	29,583	29,583	29,583
IX-WHEEL DRIVER	F,H	28,364	28,364	28,364	28,364
IX-WHEEL DRIVER	F,H	28,364	28,364	28,364	28,364
RIVER II	F,H	26,667	26,667	26,667	26,667
RIVER II	F,H	26,667	26,667	26,667	26,667
RIVER II	F,H	26,667	26,667	26,667	26,667
RIVER II	F,H	26,667	26,667	26,667	26,667
RIVER II	F,H	26,667	26,667	26,667	26,667
AINTEENANCE II	F,H	26,667	26,667	26,667	26,667
RIVER II	F,H	26,667	26,667	26,667	26,667
RIVER II	F,H	26,667	26,667	26,667	26,667
RIVER II	F,H	26,667	26,667	26,667	26,667
RIVER II	F,H	26,667	26,667	26,667	26,667
RIVER II	F,H	26,667	26,667	26,667	26,667
BORER	F,H	21,070	21,070	21,070	21,070
USTODIAN	F,H	21,070	21,070	21,070	21,070
TOTAL	26	726,553	726,553	726,553	726,553



**FILED IN**  
**OCT 7 0 2009**  
**CLERK'S OFFICE**  
 Suzette Raggs  
 Gary City Clerk

**CITY OF GARY 2010 SALARY BUDGET**

0-PARKS  
 13 PARK DEPARTMENT

POSITION	EMPL TYPE	EMPL #	APPROVED 2009 SALARY BUDGET		PROPOSED 2010 SALARY BUDGET		
			UNIT SALARY	TOTAL SALARIES	UNIT SALARY	TOTAL SALARIES	
INTENDENT	F,S	1	62,064	62,064	1	62,064	62,064
PARK COMMISSIONERS	O,S	4	1,236	4,944	4	1,236	4,944
E MANAGER	F,S	1	46,331	46,331	1	40,000	40,000
DEPUTY SUPERVISOR	F,H	1	46,331	46,331	1	40,000	40,000
INTENDENT/H.C.MANAGER	F,H	1	46,331	46,331	1	46,331	46,331
ACTIVITY MANAGER	F,S	1	46,000	46,000	1	46,000	46,000
REPORTER	F,S	1	39,000	39,000	1	39,000	39,000
ST.	F,S	1	34,882	34,882	1	34,882	34,882
CLERK	F,S	1	34,197	34,197	1	34,197	34,197
CRIST	F,S	1	30,271	30,271	1	30,271	30,271
DIRECTOR	F,S	1	34,906	34,906	1	34,906	34,906
ADDITIONAL DIRECTOR	F,S	1	35,200	35,200	1	35,200	35,200
ST.	F,S	1	30,680	30,680	1	30,680	30,680
DEPUTY BELL MAINTENANCE SUPV.	F,S	1	25,000	25,000	1	25,000	25,000
SECRETARY	F,H	1	20,600	20,600	1	20,600	20,600
ATTENDANT	F,S	1	20,600	20,600	1	20,600	20,600
AIDE/WASHINGTON	P,H	1	10,306	10,306	1	10,306	10,306
AIDE/AMBRIDGE	P,H	1	10,306	10,306	0	0	0
AIDE/BRUNSWICK	P,H	1	10,306	10,306	1	10,306	10,306
IC	P,H	1	20,600	20,600	1	14,560	14,560
AIDE/BRUNSWICK	P,H	1	9,214	9,214	0	0	0
ART-TIME		9	61,968	65,676	7	36,408	40,116
		15	552,393	552,393	15	539,731	539,731
		24	614,361	618,069	22	576,139	579,847

**FILED IN**  
**OCT 20 2009**  
 CLERK'S OFFICE  
 Suzette Raggs  
 Gary City Clerk

PARKS		APPROVED AMENDED 2009 SALARY BUDGET		PROPOSED 2010 SALARY BUDGET	
POSITION	EMPL. TYPE	UNIT SALARY	TOTAL SALARIES	UNIT SALARY	TOTAL SALARIES
NCE-HC	P,H	1	14,560	1	14,560
I-HC	P,H	1	14,560	1	14,560
OLF	P,H	2	9,780	1	9,000
REW-GOLF COURSE	P,H	4	12,195	4	7,695
GOLF	P,H	1	12,559	2	8,852
OLF	P,H	1	13,363	0	0
URITY	P,H	5	6,000	5	6,000
H GUARD	P,H	1	5,043	1	5,043
GUARD	P,H	1	3,263	1	3,263
RD 3RD YR	P,H	5	4,833	5	4,833
D 3RD YR.	P,H	8	3,257	8	3,257
RD 2ND YR	P,H	5	4,728	5	4,728
D 2ND YR.	P,H	3	3,152	3	3,152
RD 1ST YR.	P,H	2	4,883	2	4,883
D 1ST YR.	P,H	5	2,354	5	2,354
T ATTENDANT	P,H	5	4,728	5	4,728
		50	119,258	49	96,908
	P,S	59	181,226	56	133,316
	F,S	15	552,393	15	539,731
		74	733,619	71	673,047
					833,250

**FILED IN**  
**OCT 20 2009**  
**CLEK'S OFFICE**  
 Suzette Raggs  
 Gary City Clerk

**CITY OF GARY 2010 SALARY BUDGET**

: 268-GENESIS CENTER  
 : 381-CIVIC CENTER

JOB DESCRIPTION	EMPL TYPE	APPROVED/AMENDED 2009 BUDGET		2010 PROPOSED SALARY BUDGET	
		UNIT SALARY	TOTAL SALARIES	UNIT SALARY	TOTAL SALARIES
STATOR OF OPERATIONS	F,S 1	40,347	40,347	40,347	40,347
CHEF	F,S 1	37,838	37,838	37,838	37,838
LDG & GRDS	F,S 1	38,142	38,142	38,142	38,142
IASST	F,S 1	25,956	25,956	25,956	25,956
COORDINATOR	F,S 1	24,225	24,225	24,225	24,225
COORDINATOR	F,S 1	24,225	24,225	24,225	24,225
NG SUPERVISOR	F,S 1	27,999	27,999	27,999	27,999
TANT CHEF	F,S 1	23,791	23,791	23,791	23,791
ENANCE CREW SUPERVISOR	F,S 1	31,404	31,404	31,404	31,404
EEPER	F,S 1	20,600	20,600	20,600	20,600
AGE COORDINATOR	F,S 1	20,600	20,600	20,600	20,600
OF DIRECTORS	P,H 5	1,236	6,180	1,236	6,180
TOTAL	F,S 11	315,127	315,127	315,127	315,127
TOTAL	P,H 5	1,236	6,180	1,236	6,180
TOTAL		316,363	321,307	316,363	321,307



# GARY



**POLICE AND FIRE**

PENDING ORDINANCE 2009-69  
ORDINANCE NO. 8317  
AS AMENDED \_\_\_\_\_  
CERTIFICATION DATE \_\_\_\_\_  
CERTIFIED BY \_\_\_\_\_  
FAVORABLY \_\_\_\_\_  
UNFAVORABLY \_\_\_\_\_

**AN ORDINANCE OF THE COMMON COUNCIL APPROVING SALARIES FOR THE  
POLICE AND FIRE DEPARTMENTS OF THE CITY OF GARY FOR THE CALENDAR  
YEAR 2010**

WHEREAS, Section 36-4-7-3 and 36-8-3-3 of the Indiana Code direct that the Salaries of the employees of the Police and Fire Departments shall be fixed by the Common Council; and

WHEREAS, The salaries for the employees of the Police and Fire Departments of the City of Gary are scheduled as attached hereto, and made a part hereof and marked for the purposes of identification as "Salary Schedule for the Police and Fire Departments of the City of Gary for the Calendar year 2000"; and

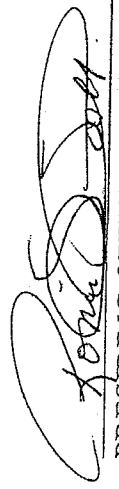
WHEREAS, Section 36-4-7-3 and 36-8-3-3 further require that all such salaries be fixed on or before the twentieth day of August of each year for the next succeeding fiscal year,

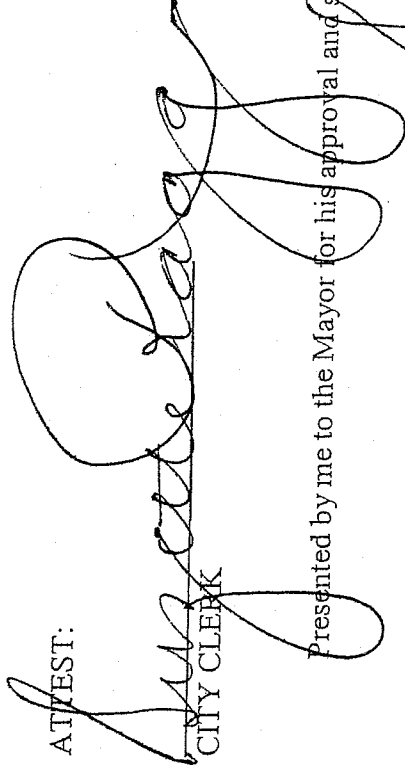
NOW THEREFORE, BE IT ORDAINED by the Common Council of the City of Gary, Indiana as follows:

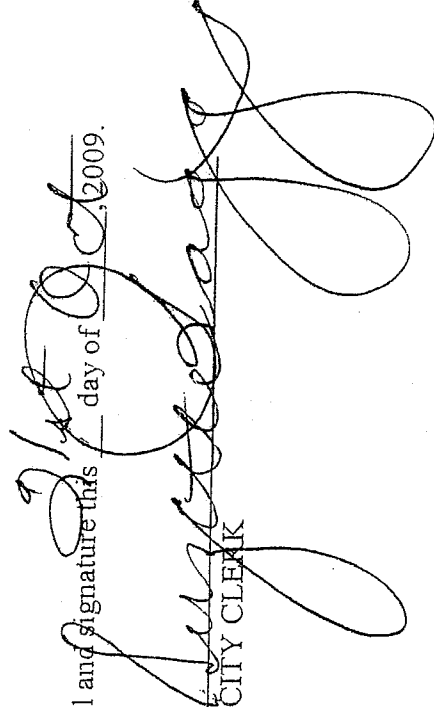
**SECTION 1.** That the Salary Schedule which is attached hereto and made a part hereof, which is marked for purposes of identification as "Salary Schedule for the Police and Fire Departments of the City of Gary for the Calendar Year 2010" is approved by the Common Council of the City of Gary.

**SECTION 2.** This ordinance shall be in full and effect beginning January 1, 2010.

**PASSED and ADOPTED**, by the Common Council of the City of Gary, Indiana, this 20<sup>th</sup> day of Oct, 2009.

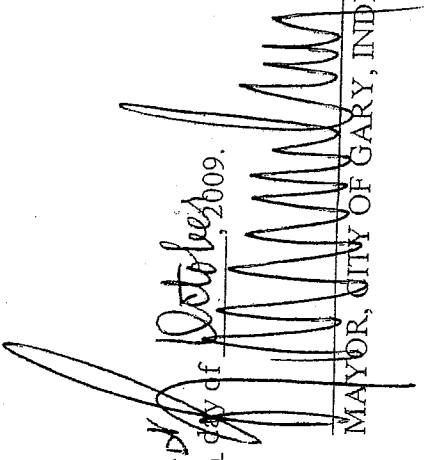
  
PRESIDING OFFICER

ATTEST:  
  
CITY CLERK

Presented by me to the Mayor for his approval and signature this 21<sup>st</sup> day of Oct, 2009.  
  
CITY CLERK



APPROVED and SIGNED by me this 21 day of October, 2009.

  
MAYOR, CITY OF GARY, INDIANA

PREPARED BY: Law Department

SPONSORED BY: Rudolph Clay, Mayor  
Celita Green, Controller

COMMITTEE ASSIGNMENT FINANCE Reported-out/Date 9-15-09  
1st Reading/Date 9-15-09 Committee Hearing/Date 9-22-09 2nd Reading/Date 9-15-09  
Public Hearing/Date 10-16-09 3rd Reading/Date 10-20-09 Final Reading/Date 10-20-09  
Passed/Date \_\_\_\_\_ Defeated/Date \_\_\_\_\_ Deferred/Date \_\_\_\_\_  
Tabled/Date \_\_\_\_\_ Override/Date \_\_\_\_\_ Adopted/Date 10-20-09  
Publication/Date \_\_\_\_\_ Community Hearing/Date \_\_\_\_\_ Veto \_\_\_\_\_ Pocket \_\_\_\_\_  
Veto \_\_\_\_\_ Adopted \_\_\_\_\_











**FILED IN**  
**OCT 20 2009**  
**CLERK'S OFFICE**  
 Suzette Raggs  
 Gary City Clerk

**CITY OF GARY 2010 SALARY BUDGET**

FUND: 101-GENERAL  
 DEPT: 290 FIRE DEPARTMENT

JOB DESCRIPTION	APPROVED 2009 SALARY BUDGET		PROPOSED 2010 SALARY BUDGET	
	EMP. TYPE	UNIT SALARIES	UNIT SALARIES	UNIT SALARIES
FIRE CHIEF	F,S	1	104,738	104,738
DEPUTY CHIEF	F,S	1	60,845	60,845
DIVISION CHIEF OF OPERATION	F,S	1	53,927	53,927
DIVISION CHIEF	F,S	1	53,927	53,927
DIVISION CHIEF	F,S	1	53,927	53,927
DIVISION CHIEF	F,S	1	53,927	53,927
DIVISION CHIEF	F,S	1	53,927	53,927
CHIEF BUILDING AND GROUNDS	F,S	1	53,927	53,927
CHIEF INSPECTOR	F,S	1	53,927	53,927
CHIEF MECHANIC	F,S	1	53,927	53,927
CHIEF OF COMMUNICATIONS	F,S	1	53,927	53,927
CHIEF TRAINING OFFICER	F,S	1	53,927	53,927
CHIEF HEALTH & SAFETY	F,S	1	53,927	53,927
BATTALION CHIEF	F,S	1	47,776	47,776
BATTALION CHIEF	F,S	1	47,776	47,776
BATTALION CHIEF	F,S	1	47,776	47,776
BATTALION CHIEF	F,S	1	47,776	47,776
BATTALION CHIEF	F,S	1	47,776	47,776
BATTALION CHIEF	F,S	1	47,776	47,776
BATTALION CHIEF	F,S	1	47,776	47,776
BATTALION CHIEF	F,S	1	47,776	47,776
BATTALION CHIEF	F,S	1	47,776	47,776
BATTALION CHIEF	F,S	1	47,776	47,776
BATTALION CHIEF	F,S	1	47,776	47,776
MIS OFFICER	F,S	1	47,776	47,776
DRILL MASTER	F,S	1	47,776	47,776
<b>SUBTOTALS</b>		<b>27</b>	<b>1,379,868</b>	<b>1,427,644</b>

FUND: 101-GENERAL  
 DEPT: 290 FIRE DEPARTMENT

		COUNCIL APPROVED/REMOVED 2009 SALARY/BUDGET		PROPOSED 2010 SALARY BUDGET	
EMP TYPE	JOB DESCRIPTION	UNIT SALARY	UNIT SALARY	UNIT SALARY	UNIT SALARY
F,S	FISCAL OFFICER	45,501	45,501	1	45,501
F,S	SENIOR INSPECTOR	47,776	47,776	1	47,776
F,S	MASTER MECHANIC	47,776	47,776	1	47,776
F,S	CAPTAIN	45,501	45,501	1	45,501
F,S	CAPTAIN	45,501	45,501	1	45,501
F,S	CAPTAIN	45,501	45,501	1	45,501
F,S	CAPTAIN	45,501	45,501	1	45,501
F,S	CAPTAIN	45,501	45,501	1	45,501
F,S	CAPTAIN	45,501	45,501	1	45,501
F,S	CAPTAIN	45,501	45,501	1	45,501
F,S	CAPTAIN	45,501	45,501	1	45,501
F,S	CAPTAIN	45,501	45,501	1	45,501
F,S	CAPTAIN	45,501	45,501	1	45,501
F,S	CAPTAIN	45,501	45,501	1	45,501
F,S	CAPTAIN	45,501	45,501	1	45,501
F,S	CAPTAIN	45,501	45,501	1	45,501
F,S	CAPTAIN*	45,501	45,501	1	45,501
F,S	CAPTAIN	45,501	45,501	1	45,501
F,S	CAPTAIN	45,501	45,501	1	45,501
F,S	CAPTAIN	45,501	45,501	1	45,501
F,S	CAPTAIN	45,501	45,501	1	45,501
F,S	CAPTAIN	45,501	45,501	1	45,501
F,S	CAPTAIN	45,501	45,501	1	45,501
F,S	CAPTAIN	45,501	45,501	1	45,501
F,S	CAPTAIN	45,501	45,501	1	45,501
F,S	CAPTAIN	45,501	45,501	1	45,501
F,S	CAPTAIN	45,501	45,501	1	45,501
F,S	CAPTAIN	45,501	45,501	1	45,501
F,S	CAPTAIN	45,501	45,501	1	45,501
F,S	CAPTAIN	45,501	45,501	1	45,501
F,S	CAPTAIN	45,501	45,501	1	45,501
F,S	CAPTAIN	45,501	45,501	1	45,501
F,S	CAPTAIN	45,501	45,501	1	45,501
F,S	CAPTAIN	45,501	45,501	1	45,501
F,S	CAPTAIN	45,501	45,501	1	45,501
F,S	CAPTAIN	45,501	45,501	1	45,501
F,S	CAPTAIN	45,501	45,501	1	45,501
	<b>SUBTOTALS</b>	<b>39</b>	<b>1,779,089</b>	<b>39</b>	<b>1,779,089</b>



**FILED IN**  
**OCT 20 2009**  
**CLERK'S OFFICE**  
 Suzette Raggs  
 Gary City Clerk

FUND: 101-GENERAL  
 DEPT: 290 FIRE DEPARTMENT

JOB DESCRIPTION	COUNCIL APPROVED/REVISED 2009 SALARY BUDGET		PROPOSED 2010 SALARY BUDGET		
	EMP TYPE	UNIT SALARY	UNIT SALARY	UNIT SALARY	
CAPTAIN	F,S	1 45,501	45,501	1 45,501	45,501
CAPTAIN	F,S	1 45,501	45,501	1 45,501	45,501
CAPTAIN	F,S	1 45,501	45,501	1 45,501	45,501
CAPT SAFETY OFFICER	F,S	1 45,501	45,501	1 45,501	45,501
CAPT SAFETY OFFICER	F,S	1 45,501	45,501	1 45,501	45,501
CAPT SAFETY OFFICER	F,S	1 45,501	45,501	1 45,501	45,501
INSPECTOR	F,S	1 45,501	45,501	1 45,501	45,501
INSPECTOR	F,S	1 45,501	45,501	1 45,501	45,501
INSPECTOR	F,S	1 45,501	45,501	1 45,501	45,501
ARSON INVESTIGATOR	F,S	1 45,501	45,501	1 45,501	45,501
ARSON INVESTIGATOR	F,S	1 45,501	45,501	1 45,501	45,501
ARSON INVESTIGATOR	F,S	1 45,501	45,501	1 45,501	45,501
CARPENTER	F,S	1 45,501	45,501	1 45,501	45,501
RADIO TECHNICIAN	F,S	1 45,501	45,501	1 45,501	45,501
MECHANIC	F,S	1 45,501	45,501	1 45,501	45,501
MECHANIC	F,S	1 45,501	45,501	1 45,501	45,501
MECHANIC	F,S	1 45,501	45,501	1 45,501	45,501
DIVE MASTER	F,S	1 45,501	45,501	1 45,501	45,501
EQUIPMENT OFFICER	F,S	1 45,501	45,501	1 45,501	45,501
TRAINING OFFICER	F,S	1 45,501	45,501	1 45,501	45,501
LIEUTENANT	F,S	1 43,334	43,334	1 43,334	43,334
LIEUTENANT	F,S	1 43,334	43,334	1 43,334	43,334
LIEUTENANT	F,S	1 43,334	43,334	1 43,334	43,334
<b>SUBTOTALS</b>		<b>23 1,040,022</b>	<b>1,040,022</b>	<b>23 1,040,022</b>	<b>1,040,022</b>









FUND: 101-GENERAL  
 DEPT: 290 FIRE DEPARTMENT

JOB DESCRIPTION	COUNCIL APPROVED/REVISED 2009 SALARY/BUDGET		PROPOSED 2010 SALARY/BUDGET	
	EMPL #	UNIT SALARY	EMPL #	UNIT SALARY
FIREFIGHTER	F,S 1	39,304	39,304	39,304
FIREFIGHTER	F,S 1	39,304	39,304	39,304
FIREFIGHTER	F,S 1	39,304	39,304	39,304
FIREFIGHTER	F,S 1	39,304	39,304	39,304
FIREFIGHTER	F,S 1	39,304	39,304	39,304
FIREFIGHTER	F,S 1	39,304	39,304	39,304
FIREFIGHTER	F,S 1	39,304	39,304	39,304
FIREFIGHTER	F,S 1	39,304	39,304	39,304
FIREFIGHTER	F,S 1	39,304	39,304	39,304
FIREFIGHTER	F,S 1	39,304	39,304	39,304
FIREFIGHTER	F,S 1	39,304	39,304	39,304
FIREFIGHTER	F,S 1	39,304	39,304	39,304
FIREFIGHTER	F,S 1	39,304	39,304	39,304
FIREFIGHTER	F,S 1	39,304	39,304	39,304
FIREFIGHTER	F,S 1	39,304	39,304	39,304
GRAND TOTAL	13	510,952	510,952	510,952
	241	10,359,648	10,417,424	10,417,424