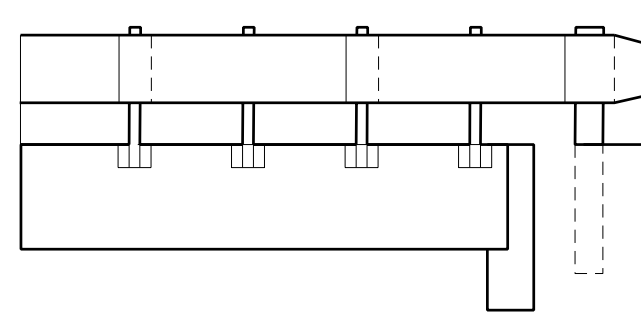


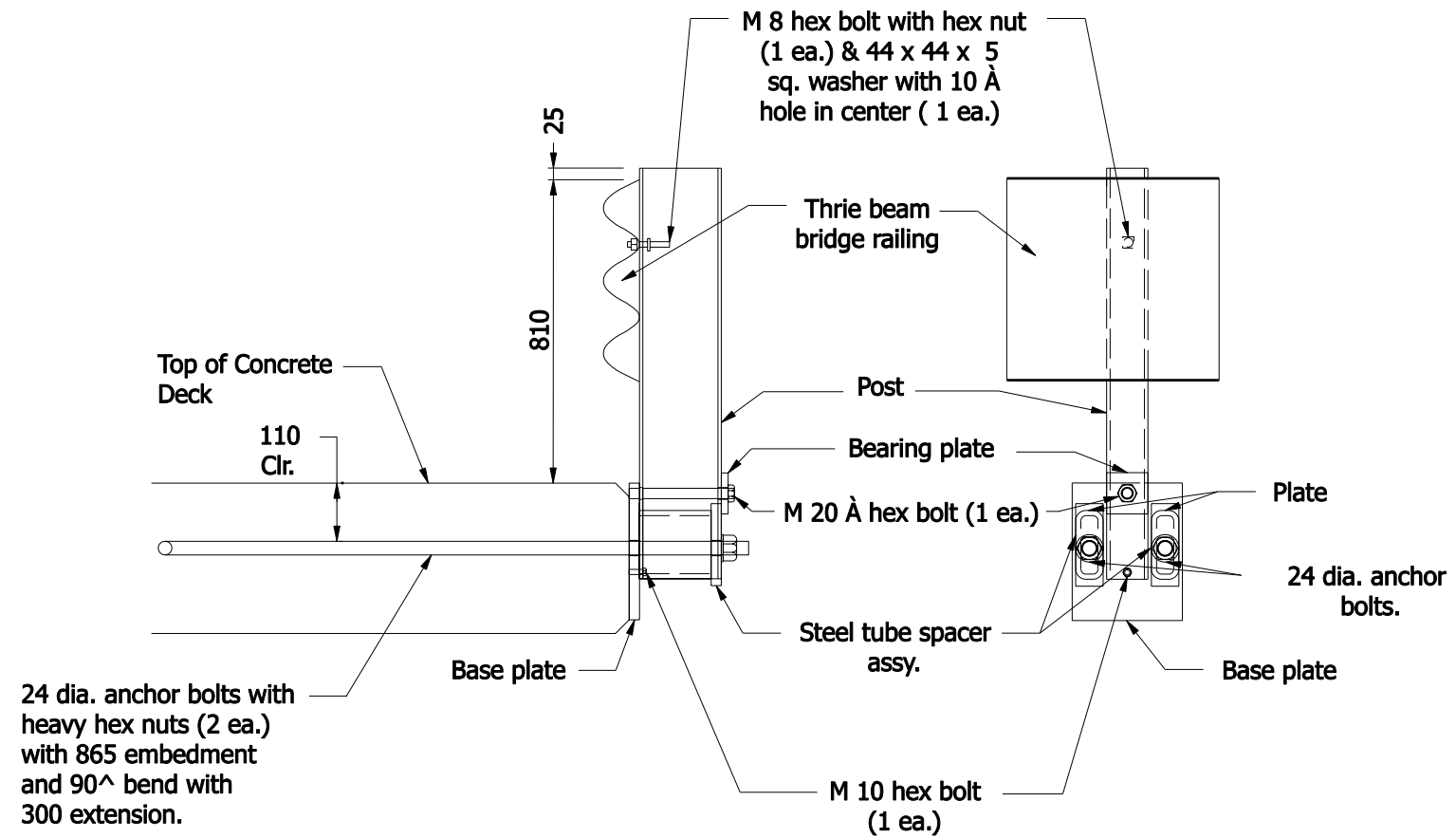
PLAN VIEW



ELEVATION VIEW

NOTES:

- 1 See Standard Drawings 601-TBGC-01 and -02 for thrie beam rail section.



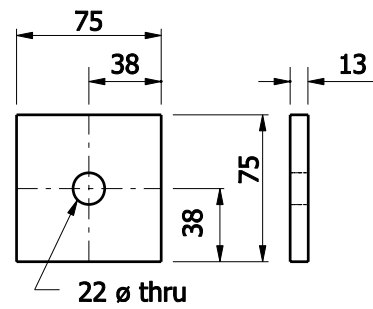
THRIE-BEAM BRIDGE RAILING ASSEMBLY DETAILS

24 dia. anchor bolts with heavy hex nuts (2 ea.) with 865 embedment and 90° bend with 300 extension.

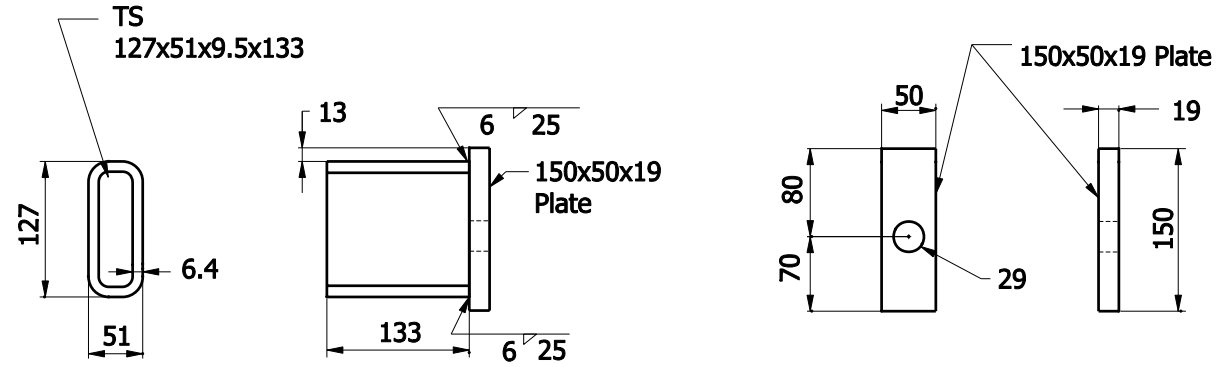
All Dimensions are in mm unless otherwise specified.

INDIANA DEPARTMENT OF TRANSPORTATION

RAILING, TS-1



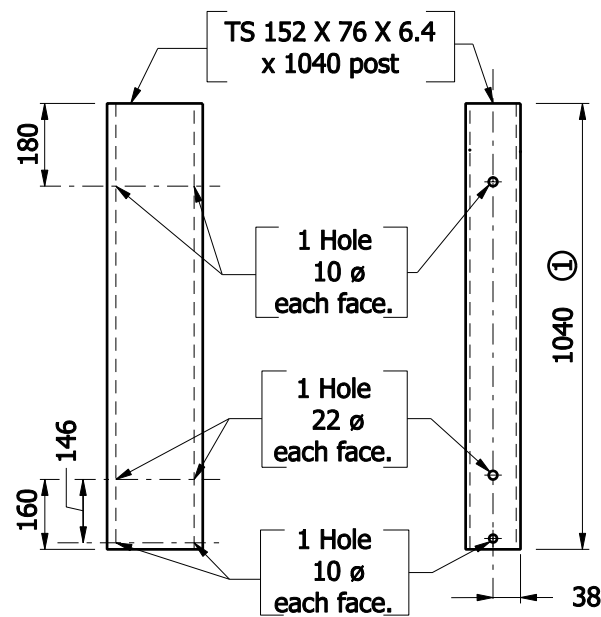
BEARING PLATE



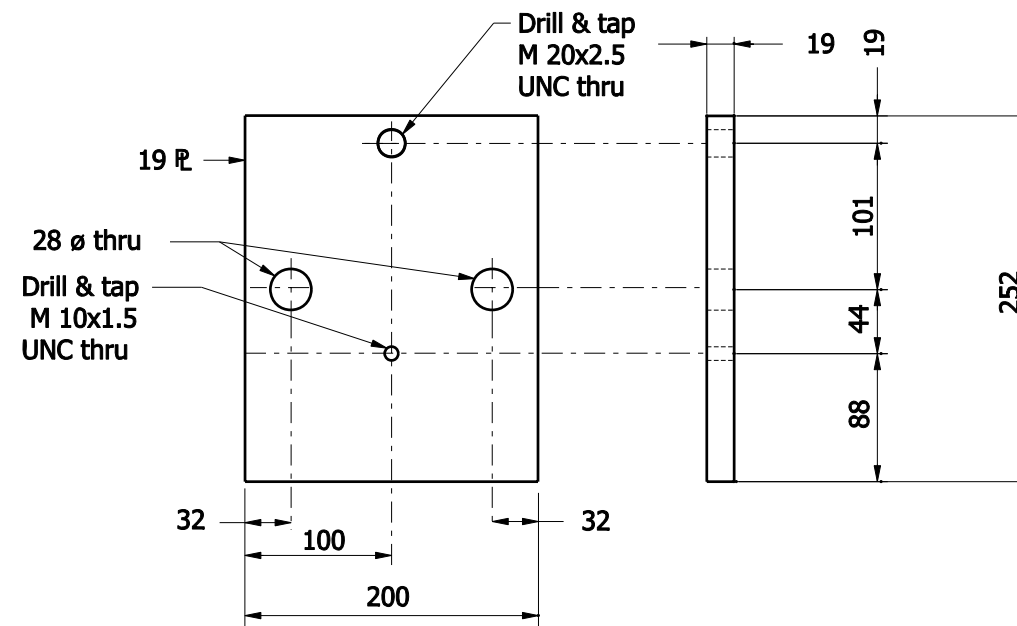
STEEL TUBE SPACER ASSEMBLY

NOTES:

- ① Post length may vary. If the 24  $\phi$  anchor bolts in the deck must be lowered to accommodate the deck reinforcing steel, the steel base plate shall be lowered and the post length increased.



SECTION REAR VIEW  
BRIDGE STEEL POST DETAIL

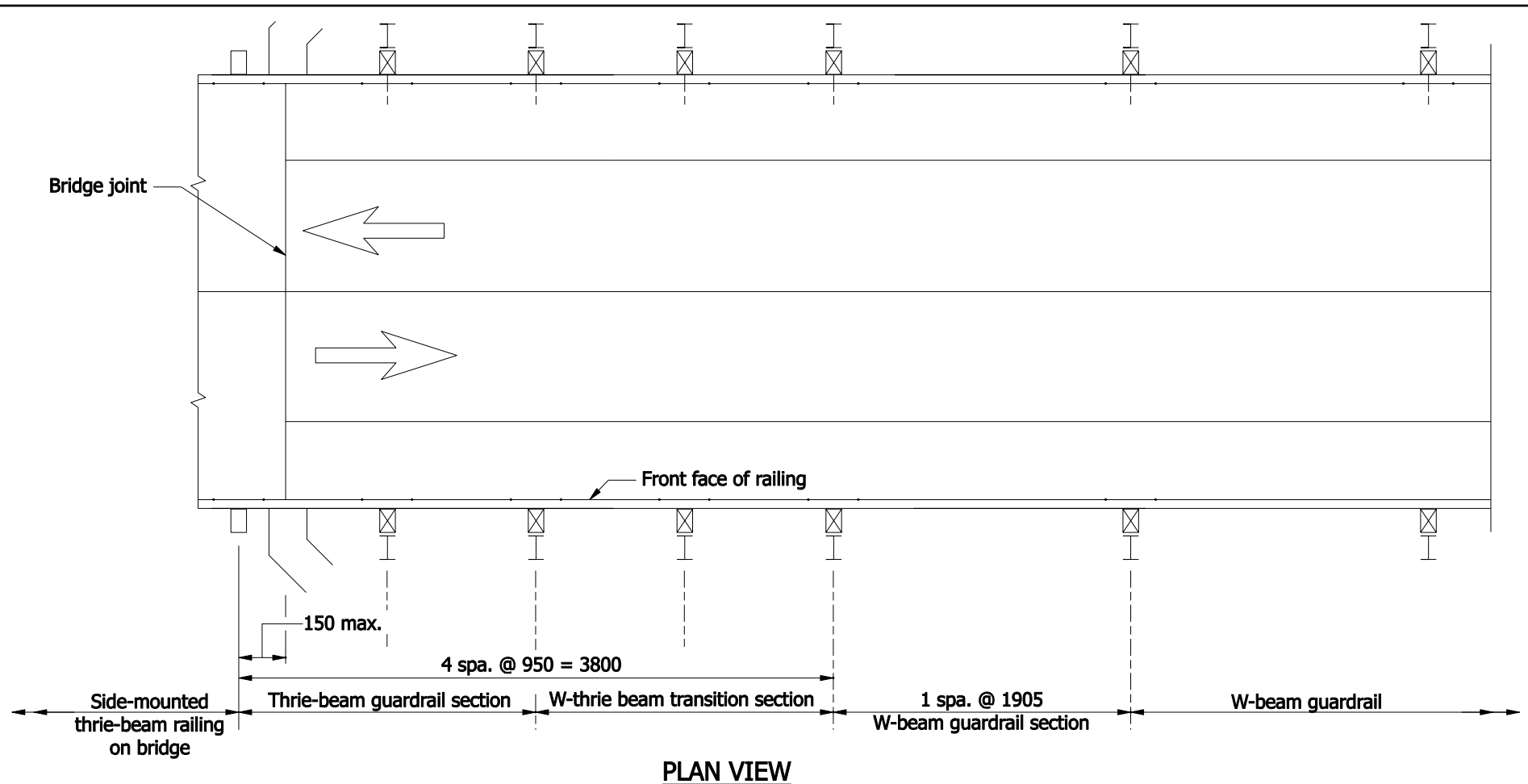


BASE PLATE

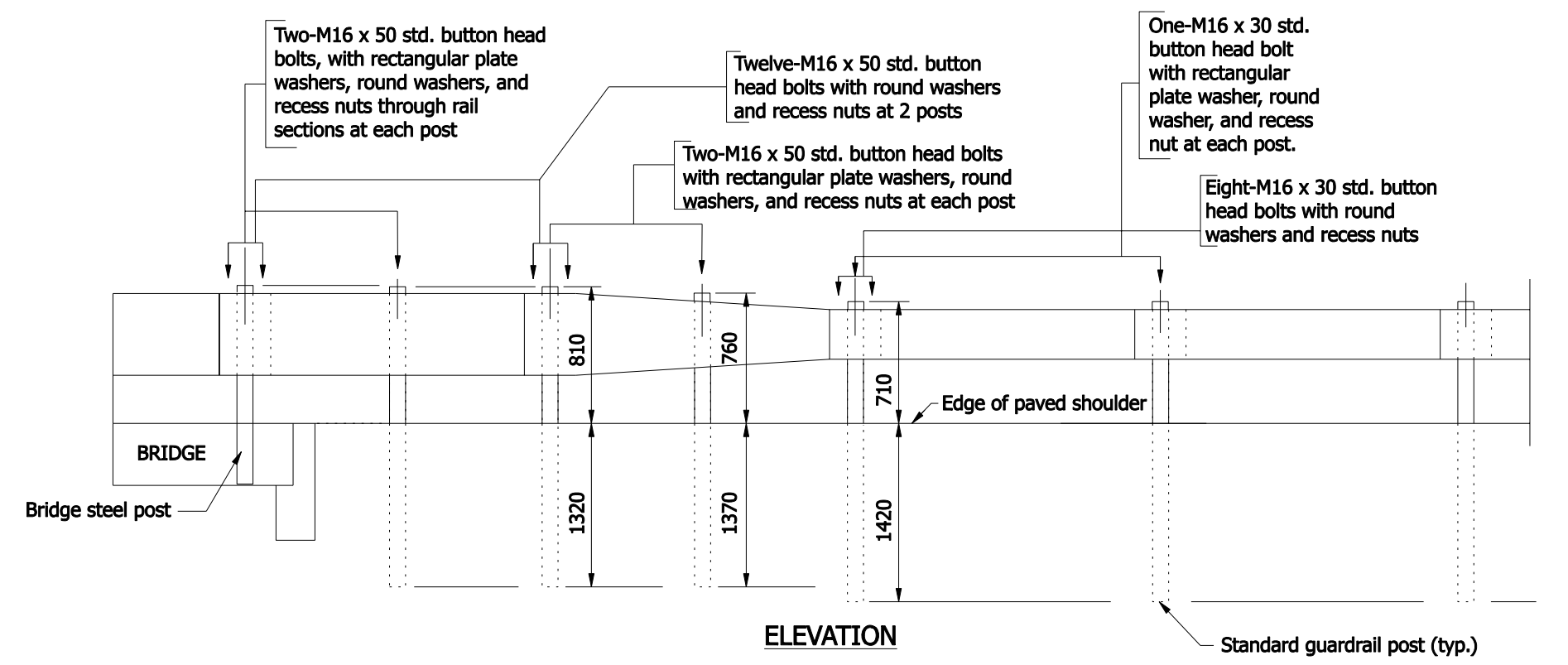
All Dimensions are in mm unless otherwise specified.

INDIANA DEPARTMENT OF TRANSPORTATION

RAILING, TS-1



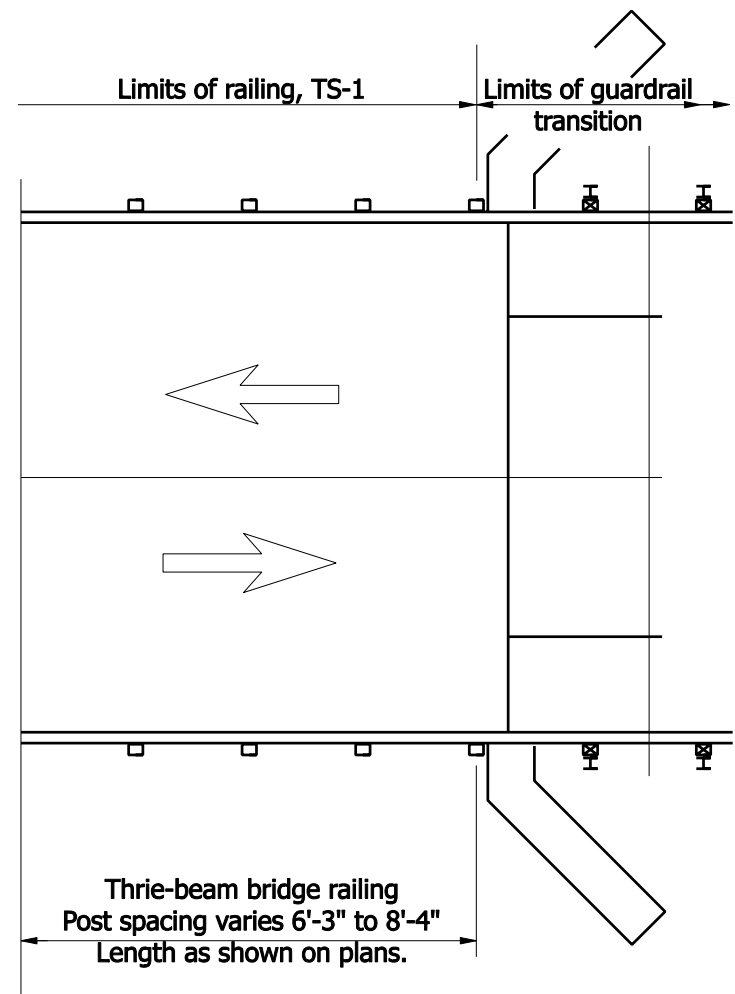
- NOTES:**
1. See Recurring Plan Detail 706-B-140d sheet 1 for bridge Steel Post Detail.
  2. See Standard Drawings 601-TBGC-01 and 601-TBGC-02 for thrie-beam guardrail components.
  3. See Standard Drawings 601-WBGC-01, 601-WBGC-02 and 601-WBGC-03 for W-beam guardrail components.



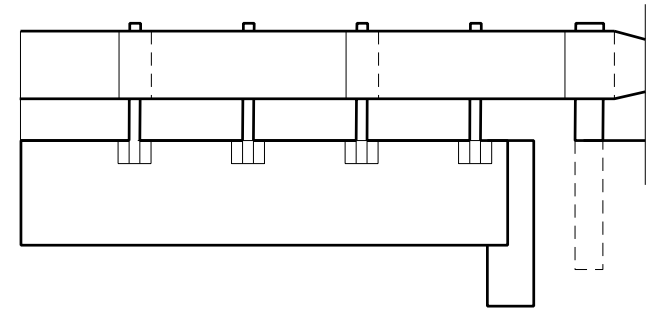
All Dimensions are in mm unless otherwise specified.

**INDIANA DEPARTMENT OF TRANSPORTATION**

**GUARDRAIL TRANSITION, TGS-1**



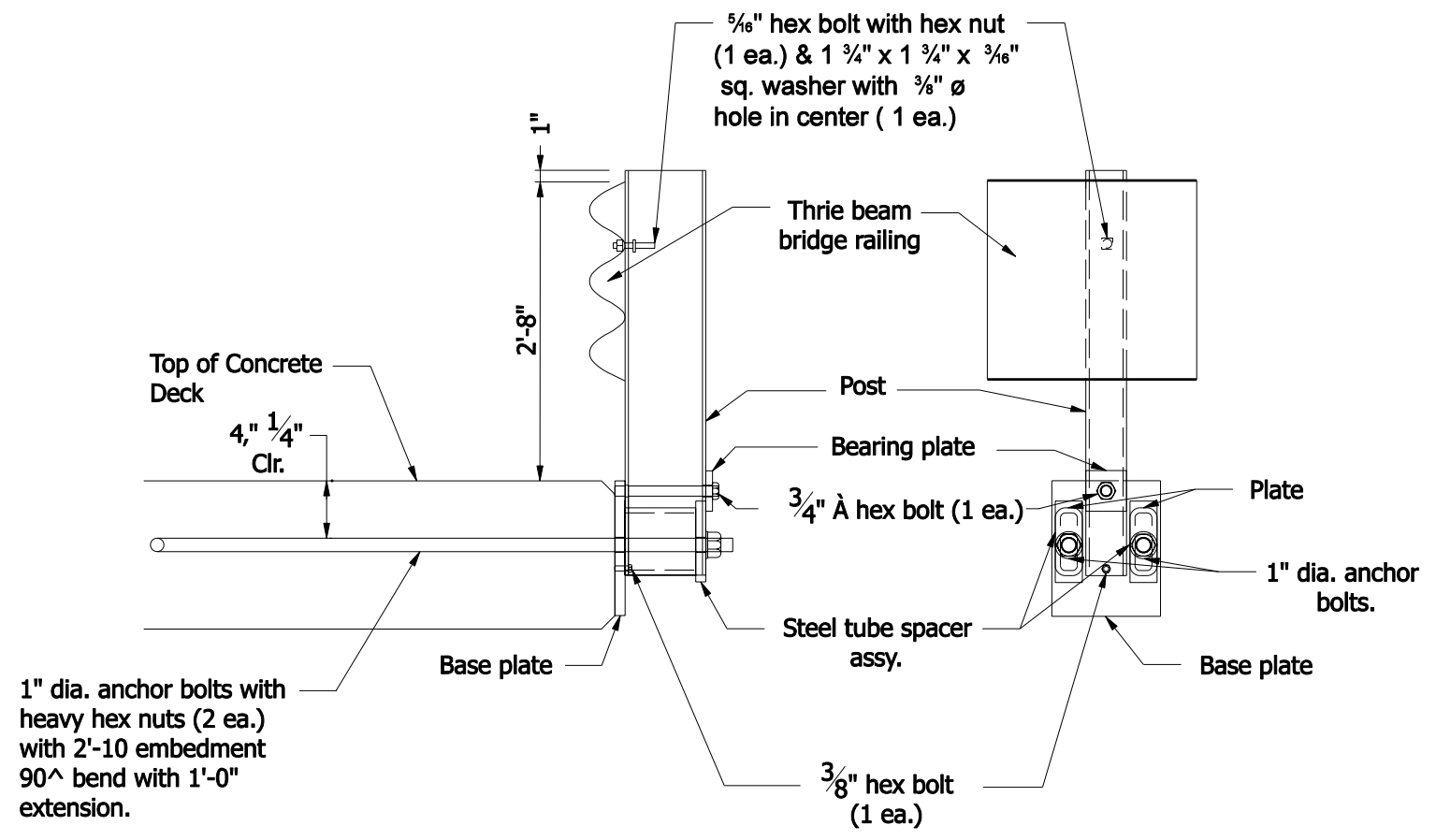
PLAN VIEW



ELEVATION VIEW

NOTES:

1 See Standard Drawings E 601-TBGC-01 and -02 for thrie beam rail section.

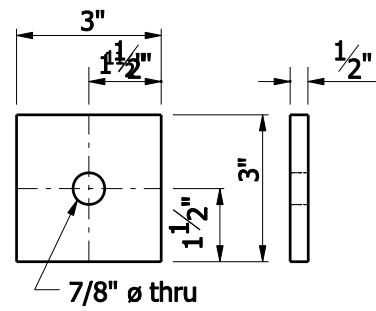


THRIE-BEAM BRIDGE RAILING ASSEMBLY DETAILS

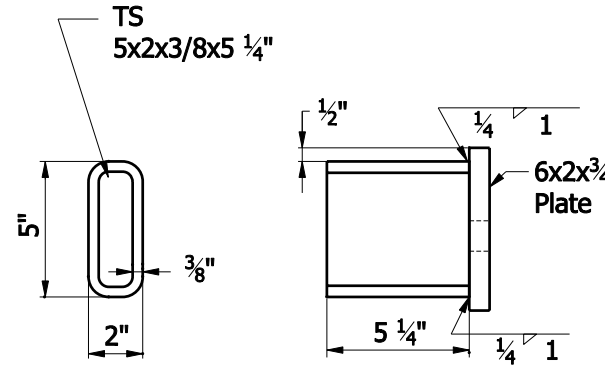
INDIANA DEPARTMENT OF TRANSPORTATION
RAILING, TS-1

**NOTES:**

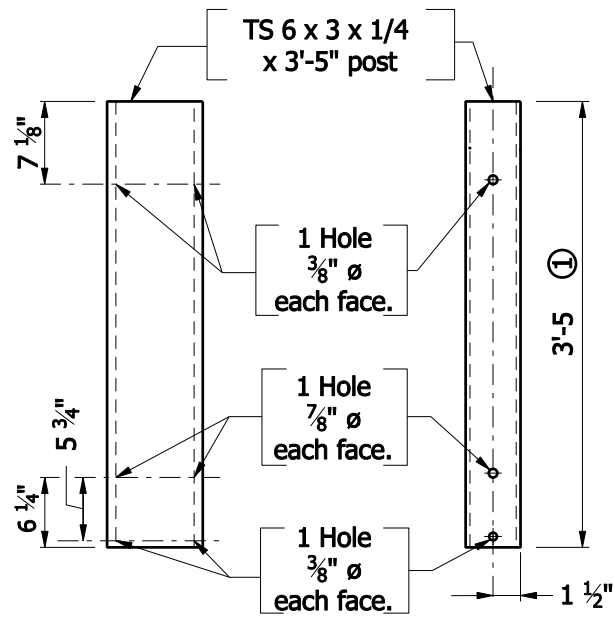
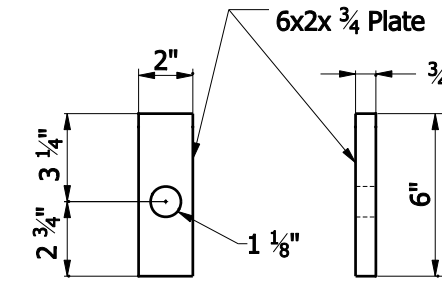
- ① Post length may vary. If the 1"  $\varnothing$  anchor bolts in the deck must be lowered to accommodate the deck reinforcing steel, the steel base plate shall be lowered and the post length increased.



**BEARING PLATE**



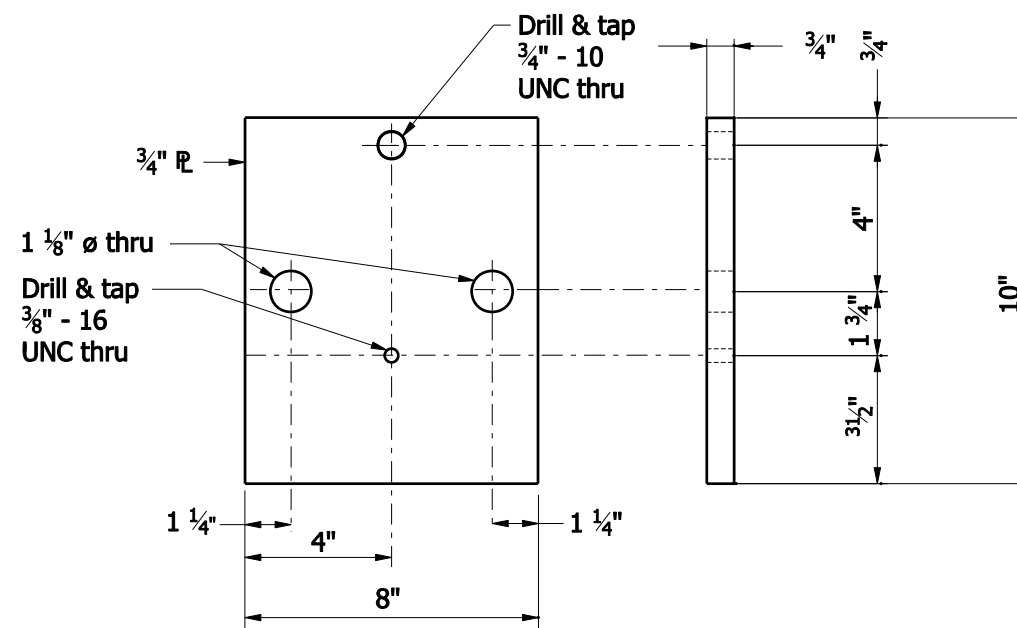
**STEEL TUBE SPACER ASSEMBLY**



**SECTION**

**REAR VIEW**

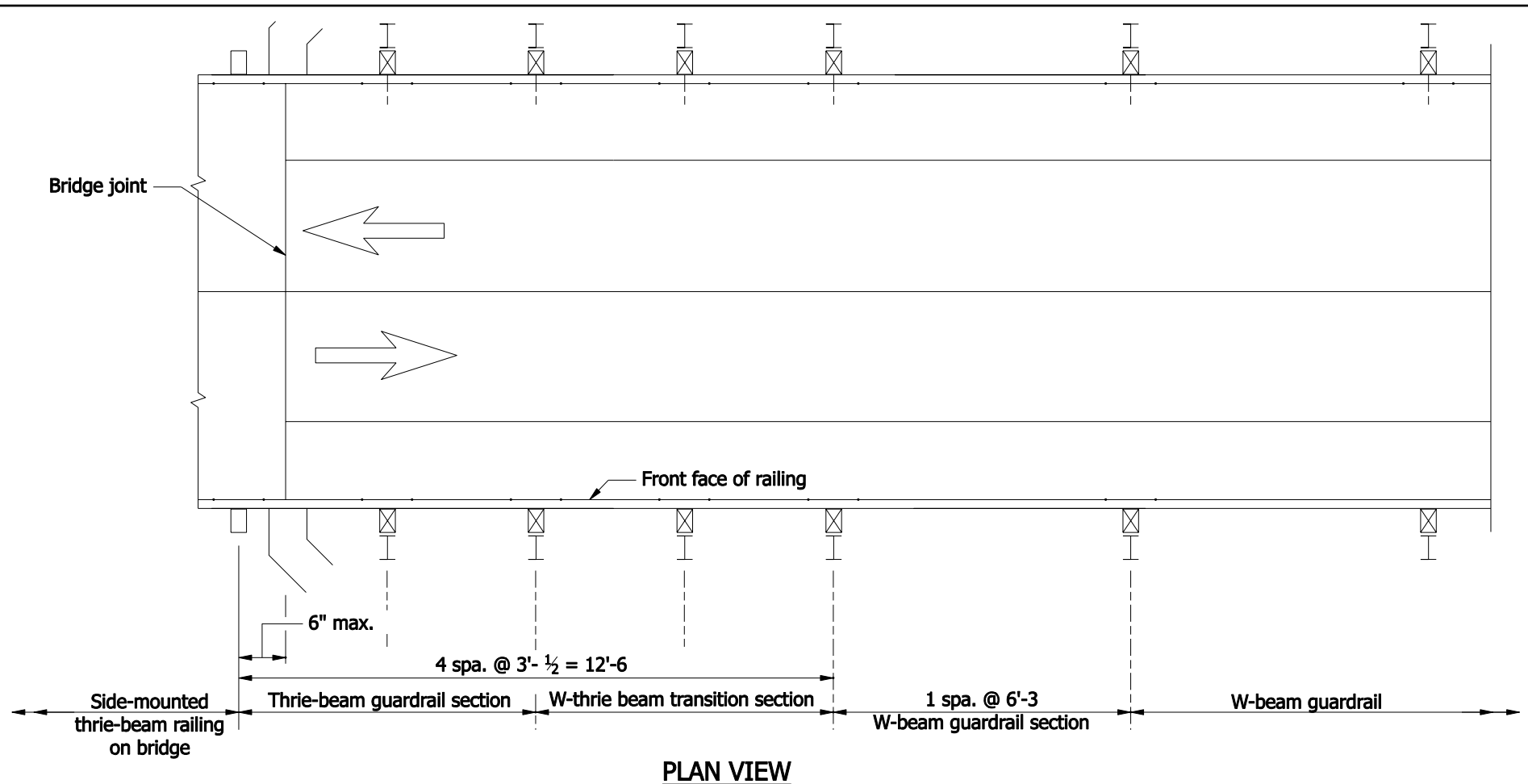
**BRIDGE STEEL POST DETAIL**



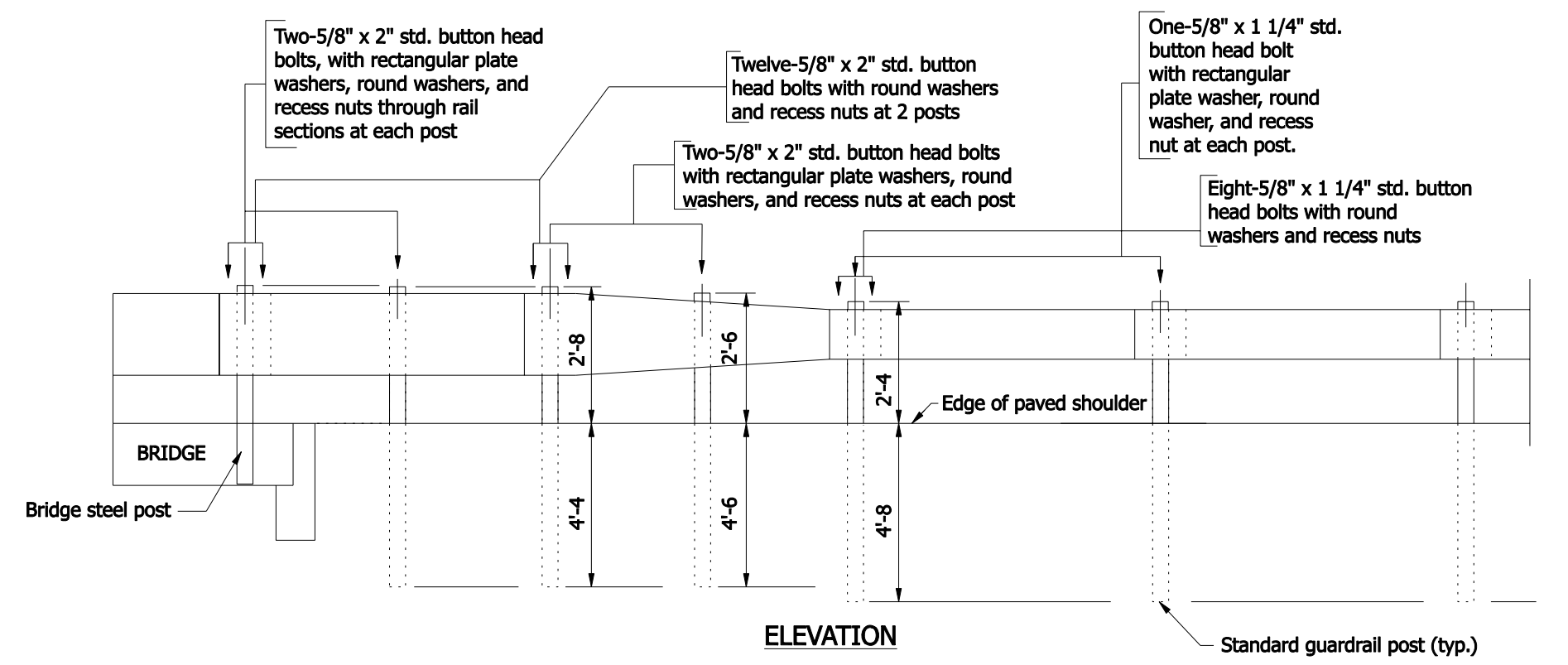
**BASE PLATE**

INDIANA DEPARTMENT OF TRANSPORTATION

RAILING, TS-1



- NOTES:**
1. See Recurring Plan Detail E 706-B-140d sheet 1 for bridge Steel Post Detail.
  2. See Standard Drawings E 601-TBGC-01 and E 601-TBGC-02 for thrie-beam guardrail components.
  3. See Standard Drawings E 601-WBGC-01, E 601-WBGC-02 and E 601-WBGC-03 for W-beam guardrail components.



INDIANA DEPARTMENT OF TRANSPORTATION  
 GUARDRAIL TRANSITION, TGS-1