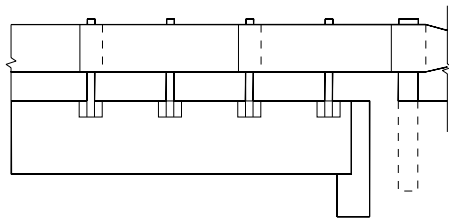
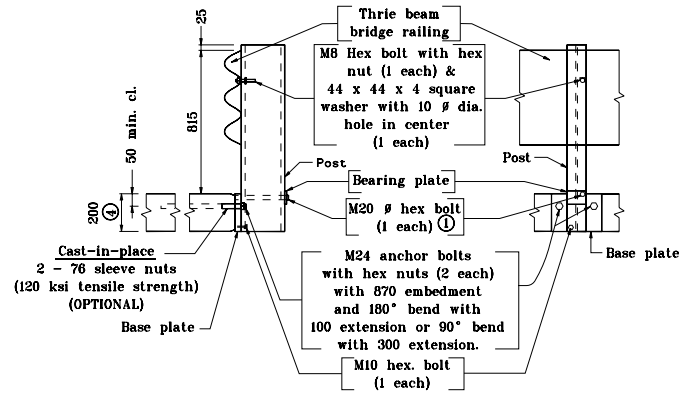


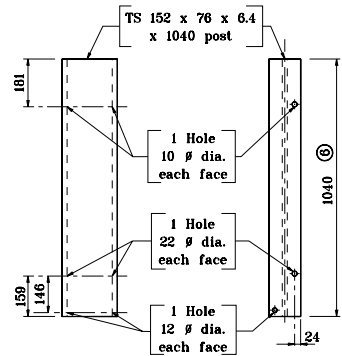
**PLAN VIEW**



**ELEVATION**



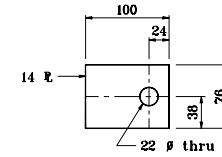
**THRIE-BEAM BRIDGE RAILING  
ASSEMBLY DETAILS**



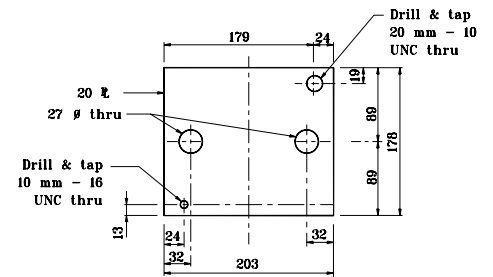
**SECTION REAR VIEW  
BRIDGE STEEL POST DETAIL**

**GENERAL NOTES**

- Optional 20 # x 215 long rod, threaded 40 min. on each end, with a heavy hex nut securing the post.
- See Standard Drawings 601-TBGC-01 and -02 for thrie beam rail section.
- Post length may vary. If the 24 # anchor bolts in the deck must be lowered to accommodate the deck reinforcing steel, the steel base plate shall be lowered and the post length increased.



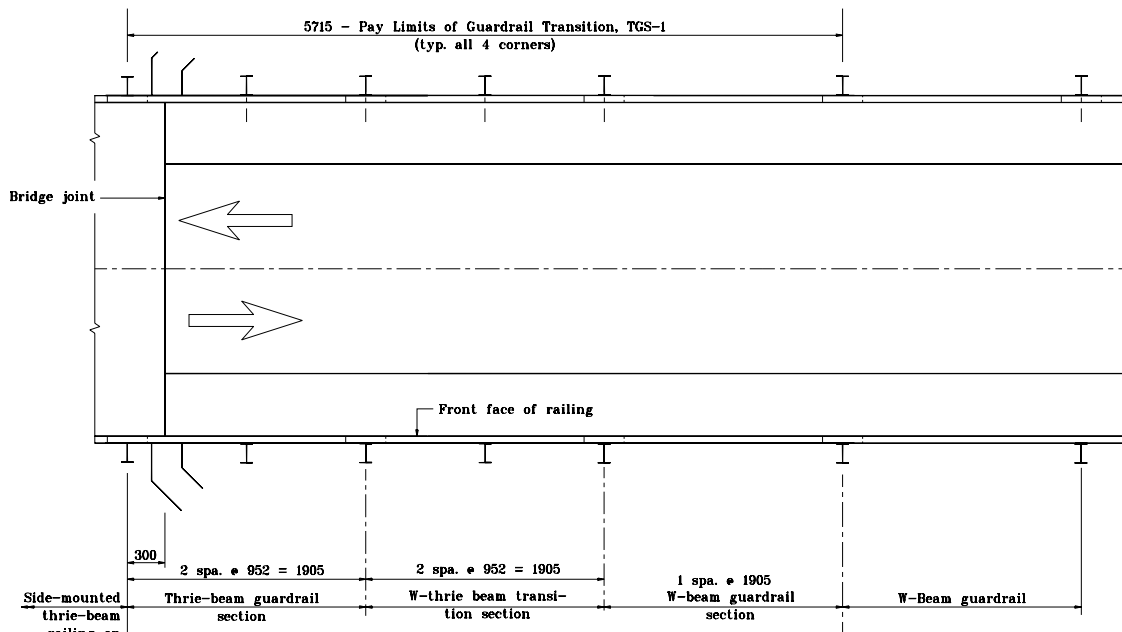
**BEARING PLATE**



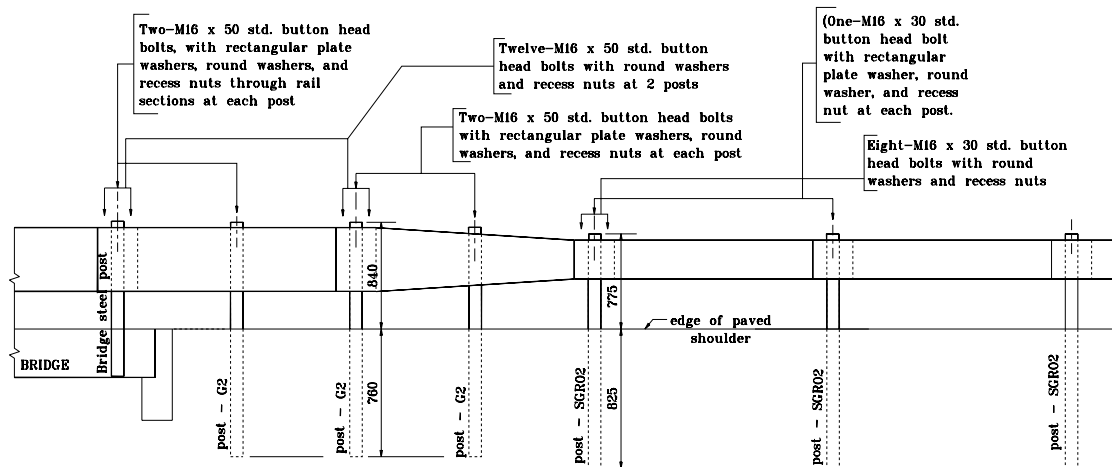
**BASE PLATE**

All dimensions are in mm unless otherwise specified.

RAILING, TS-1  
(Metric)



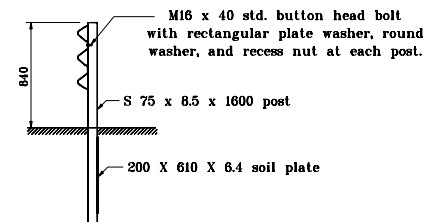
**PLAN VIEW**



**ELEVATION**

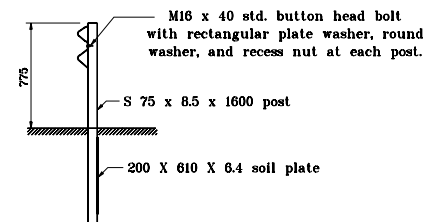
**NOTES:**

1. See Detail Drawing DET 706-BRSM-01 for Bridge Steel Post Detail.
2. Thrie-beam rail that attaches to post-G2 does not have a post block.
3. W-beam rail that attaches to post-SGR02 does not have a post block.
4. See Standard Drawing 601-TBGC-01 and 601-TBGC-02 for thrie-beam guardrail components.
5. See Standard Drawing 601-WBGC-01, 601-WBGC-02 and 601-WBGC-03 for W-beam guardrail components.



**POST - G2**

No Scale



**POST - SGR02**

No Scale

All dimensions are in mm unless otherwise specified.

**GUARDRAIL TRANSITION, TGS-1  
(Metric)**