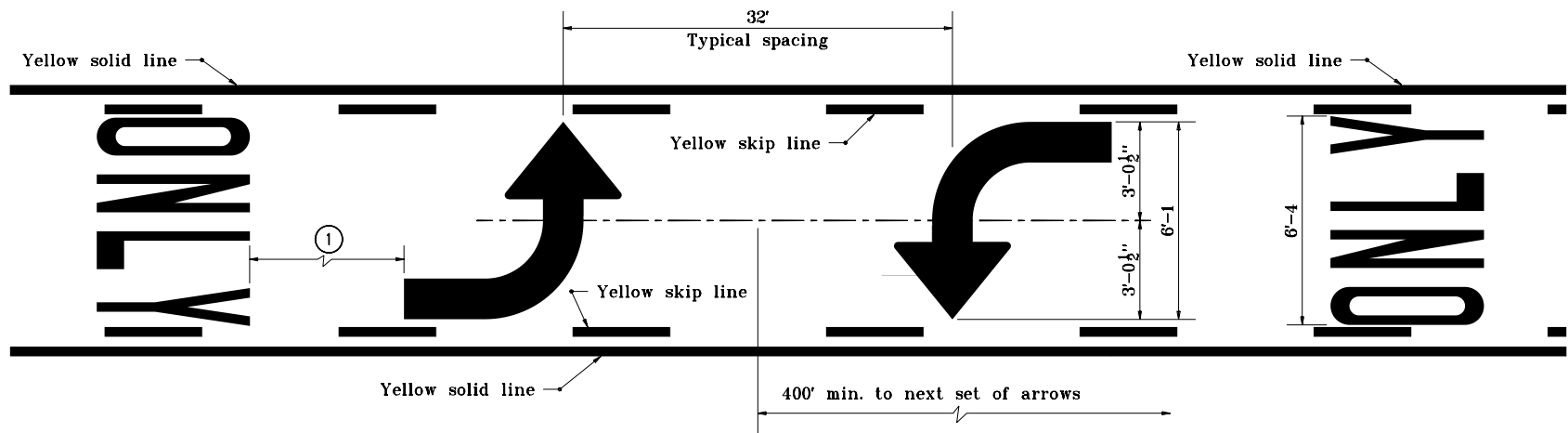


## GENERAL NOTES

- ① This dimension shall be at least 4 times the height of the characters of "ONLY" for the posted speeds  $\leq 45$  mph but not more than 10 times the height of the characters of the "ONLY" for posted speeds  $> 45$  mph.



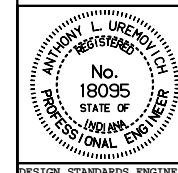
## PAVEMENT MARKING FOR BI-DIRECTIONAL LEFT TURN LANE (WORD AND SYMBOL MARKINGS)

INDIANA DEPARTMENT OF TRANSPORTATION

## PAVEMENT MARKING DETAILS

JANUARY 2000

STANDARD DRAWING NOE 808-MKPM-06



/s/ Anthony L. Uremovich 1-03-00  
DESIGN STANDARDS ENGINEER DATE

/s/ Firooz Zandi 1-03-00  
CHIEF HIGHWAY ENGINEER DATE

DESIGN STANDARDS ENGINEER