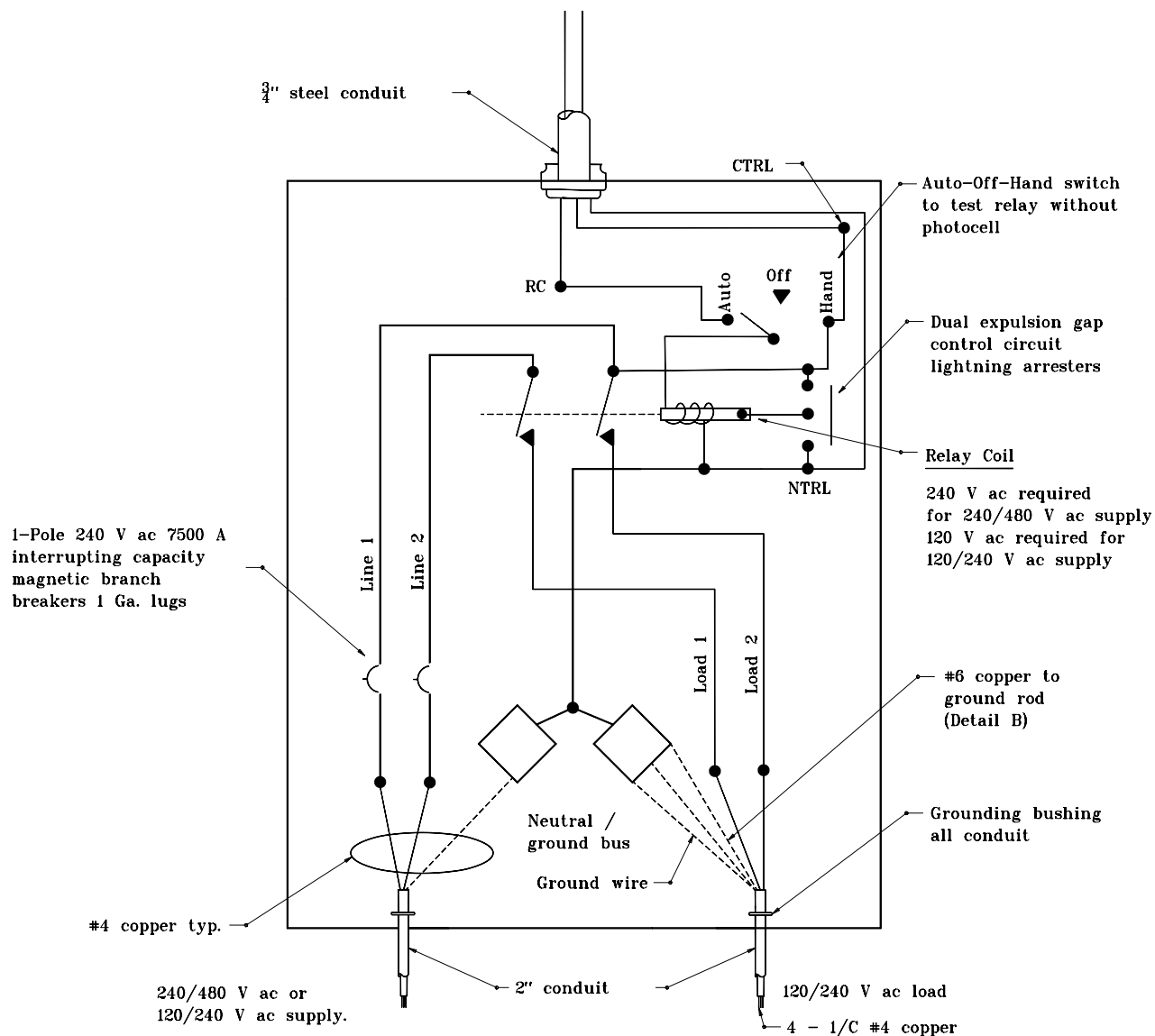


## GENERAL NOTES

To Photo Control:  
240 V ac required for 240/480 V ac supply.  
120 V ac required for 120/240 V ac supply.



**TYPICAL CABINET WIRING,  
TYPE 1**

INDIANA DEPARTMENT OF TRANSPORTATION	
LIGHT SERVICE POINT DETAILS	
JANUARY 2000	
STANDARD DRAWING NO. E 807-LTSP-03	
	/s/ Anthony L. Uremovich 1-03-00 DESIGN STANDARDS ENGINEER DATE
	/s/ Firooz Zandi 1-03-00 CHIEF HIGHWAY ENGINEER DATE
DESIGN STANDARDS ENGINEER	