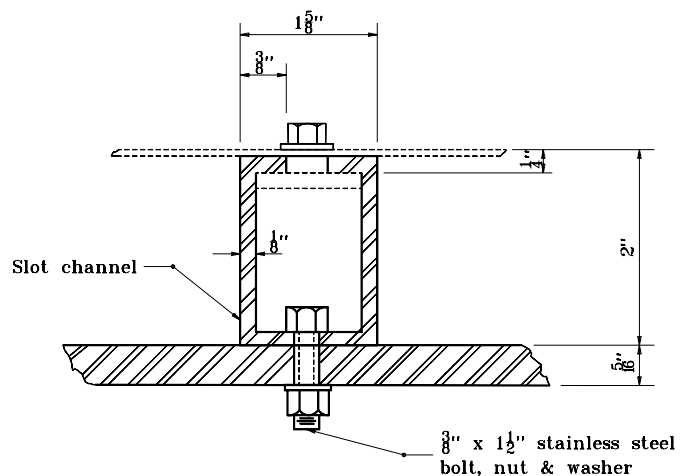


- GENERAL NOTES**
1. For connection details see Sign Wiring Details on the plans.

**CONDUIT / LIGHTING DETAIL**  
(For single arm or beam sign bracket)



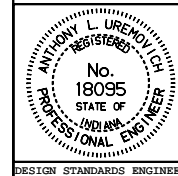
**DETAIL A**

INDIANA DEPARTMENT OF TRANSPORTATION

**CONDUIT / LIGHTING**

MARCH 1995

STANDARD DRAWING NO. **E 803-SNIL-07**



DETAILS PLACED IN THIS FORMAT 7-27-99

/s/ Anthony L. Uremovich 7-27-99  
DESIGN STANDARDS ENGINEER DATE

/s/ Firooz Zandi 7-27-99  
CHIEF HIGHWAY ENGINEER DATE  
ORIGINALLY APPROVED 3-01-95