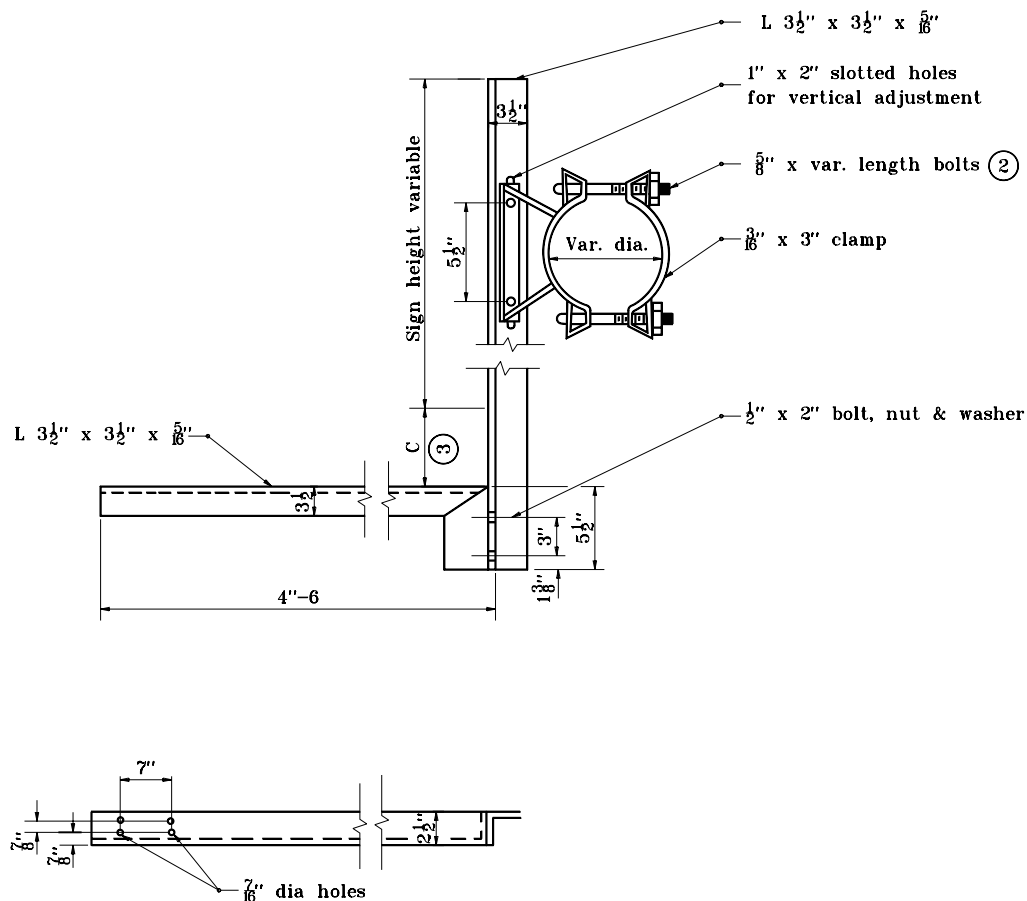


## GENERAL NOTES

1. Alternate right and left hand sign brackets required. (See typical plan)

② See Standard Drawing E 803-SNIL-07 for Conduit-Lighting Detail.

③ Dimension governed by type of lighting fixture used. The contractor shall advise the fabricator of this dimension.



**SIGN BRACKET WITH EXTENSION LIGHTING SUPPORT  
(FOR SINGLE ARM OR BEAM)**

INDIANA DEPARTMENT OF TRANSPORTATION	
<b>SIGN BRACKET WITH EXTENSION LIGHTING SUPPORT</b>	
JANUARY 2000	
STANDARD DRAWING NO. <b>E 803-SNIL-06</b>	
	/s/ Anthony L. Uremovich 3-01-95 DESIGN STANDARDS ENGINEER DATE
	/s/ Donald W. Lucas 3-01-95 CHIEF HIGHWAY ENGINEER DATE