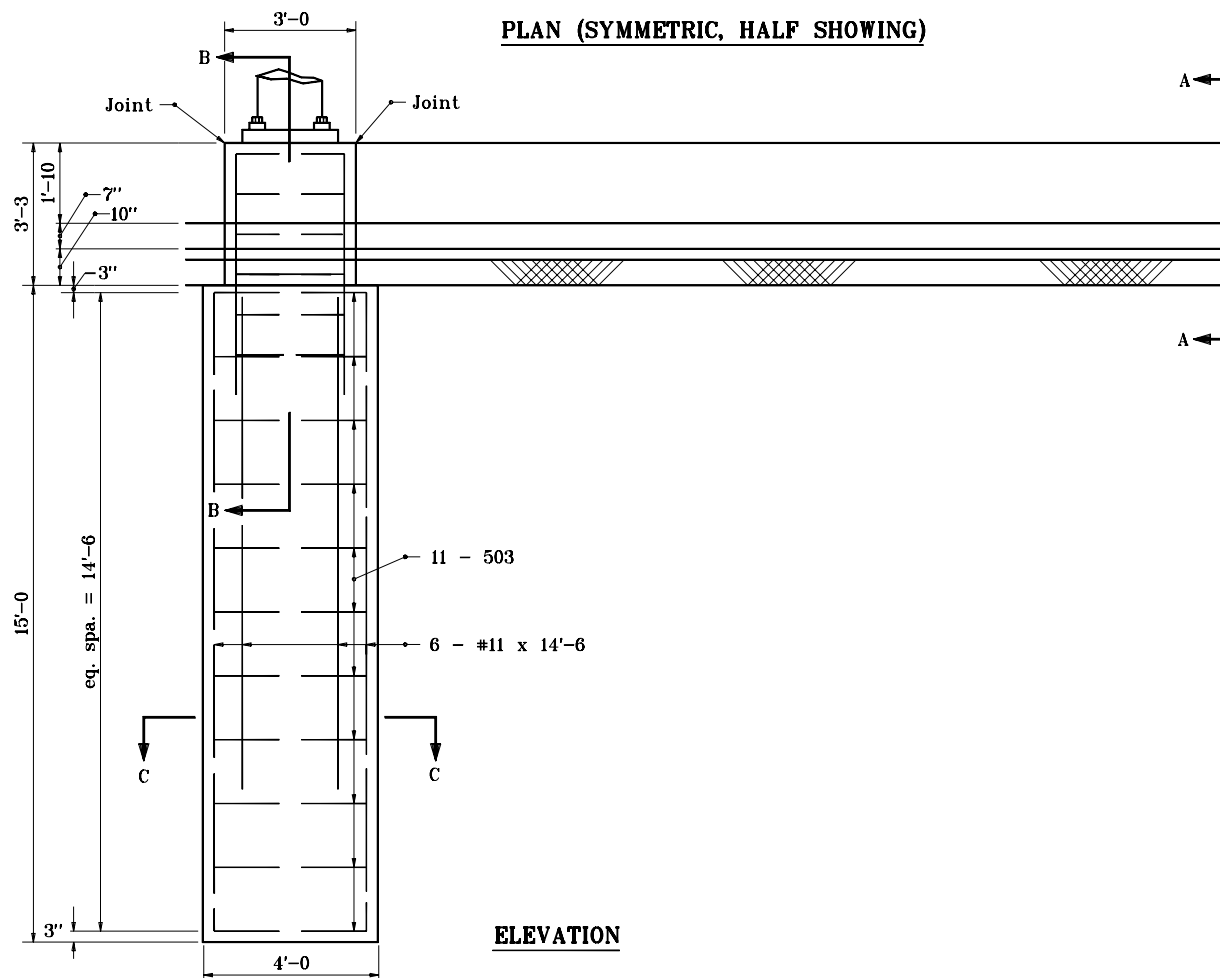


GENERAL NOTES

1. See Standard Drawing E 803-SNFT-01 for bending diagrams.

PLAN (SYMMETRIC, HALF SHOWING)



ELEVATION

INDIANA DEPARTMENT OF TRANSPORTATION	
DOUBLE ARM SIGN STRUCTURE	
SPECIAL MEDIAN FOOTING	
SEPTEMBER 1997	
STANDARD DRAWING NO. E 803-SNFT-02	
DETAILS PLACED IN THIS FORMAT 7-27-99	
	/s/ Anthony L. Uremovich 7-27-99 DESIGN STANDARDS ENGINEER DATE
	/s/ Firooz Zandi 7-27-99 CHIEF HIGHWAY ENGINEER DATE
	ORIGINALLY APPROVED 9-02-97