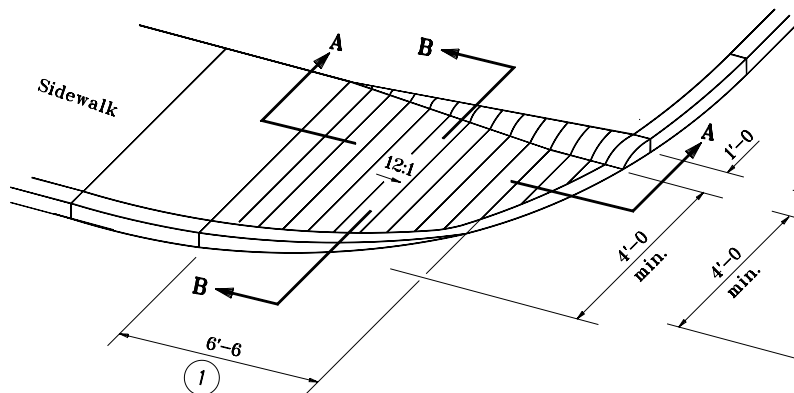
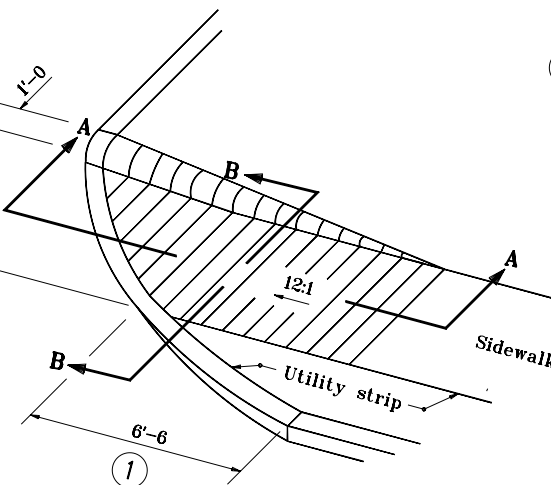


GENERAL NOTES

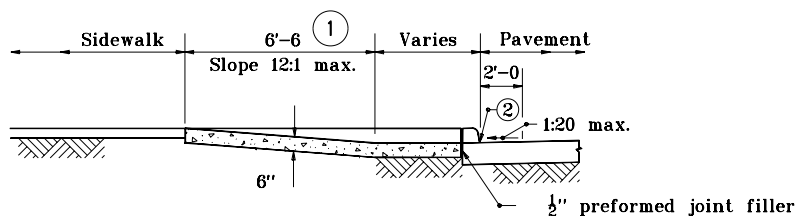
- 1 These dimension are based on a 6" curb height, and shall be proportionally adjusted for other curb heights.
- 2 The bottom edge of the curb ramp shall be flush with the edge of the adjacent pavement and gutter line



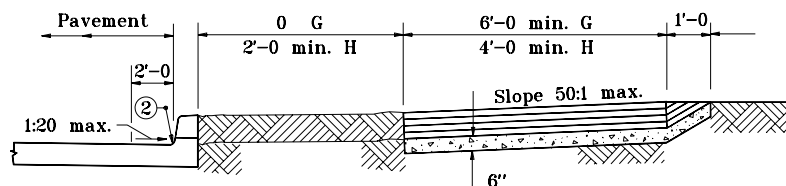
CURB RAMP, TYPE G



CURB RAMP, TYPE H



SECTION A-A (Reversed for Type H)



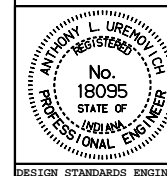
SECTION B-B (Reversed for Type H)

INDIANA DEPARTMENT OF TRANSPORTATION

CURB RAMPS TYPE G AND H

JANUARY 2000

STANDARD DRAWING NO. **E 604-SWCR-09**



/s/ Anthony L. Uremovich 1-03-00
DESIGN STANDARDS ENGINEER DATE

/s/ Donald W. Lucas 1-03-00
CHIEF HIGHWAY ENGINEER DATE

DESIGN STANDARDS ENGINEER